

voice & piano II

voice, piano

eva-maria houben

voice & piano II

eva-maria houben

2002

stimme:

insgesamt leise (p).

i : wie „creek“ (engl.).

endungen: p, t, k, b, d, g.

klavier:

cluster (chromatisch), stumm. bleibt während der gesamten
aufführungszeit fixiert.

• = ein kurzer impuls (mp).

dauer: 40 minuten.

voice:

on the whole soft (p).

i : like “creek”.

suffixes: p, t, k , b, d, g.

piano:

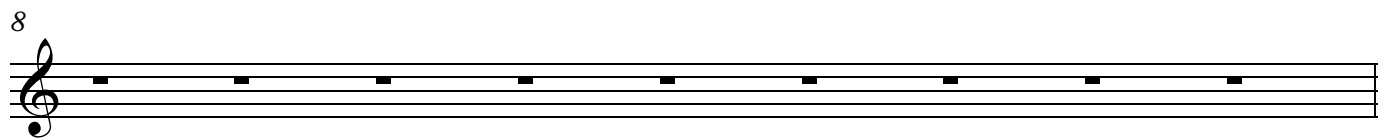
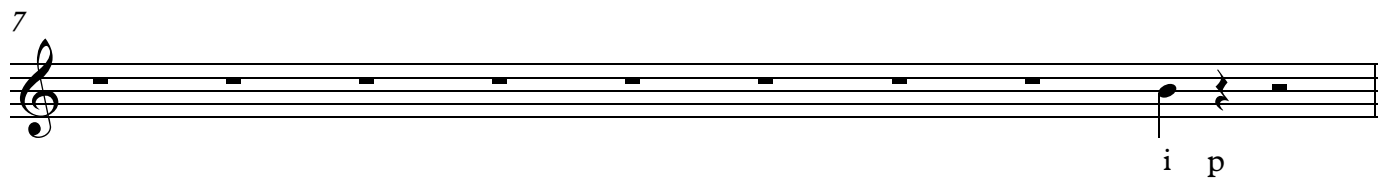
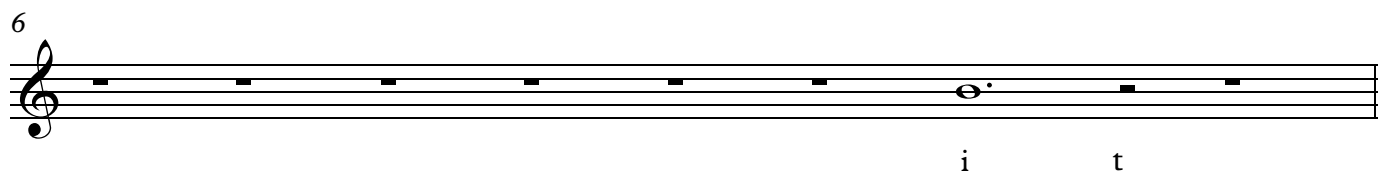
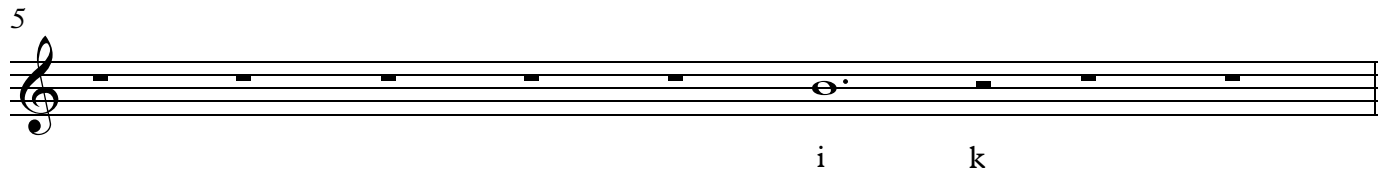
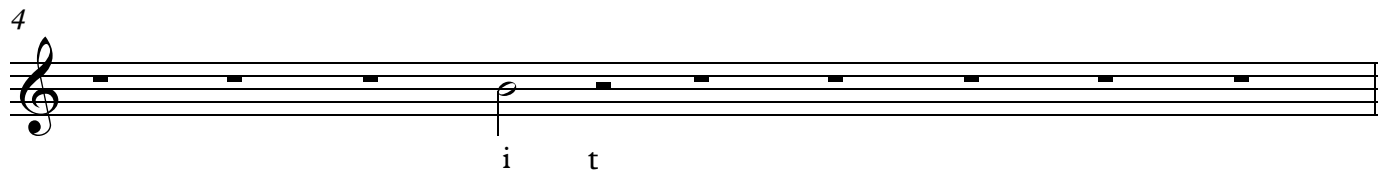
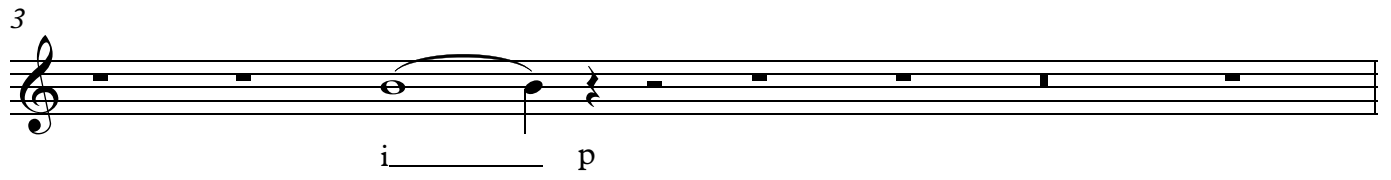
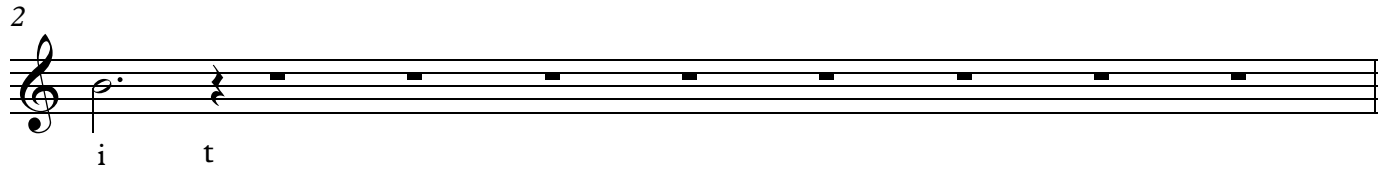
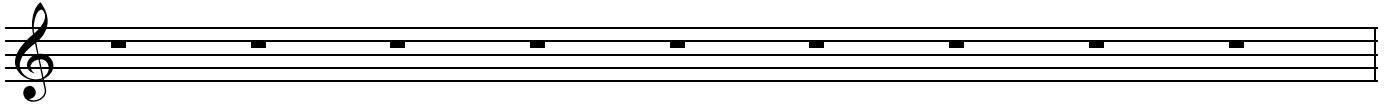
cluster (chromatic), mute – down throughout.

● = a short impulse (mp).

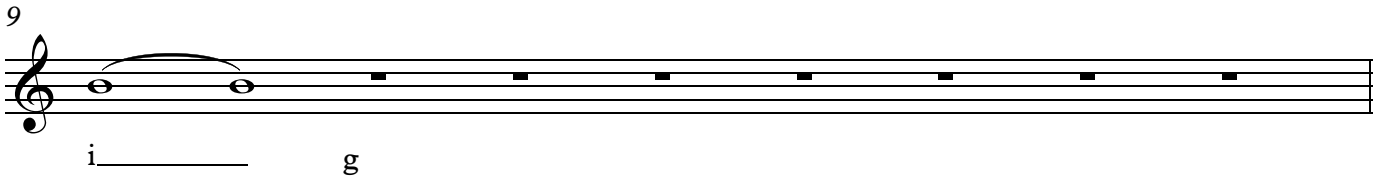
duration: 40 minutes.

1
voice

♩ = MM 42
00:00

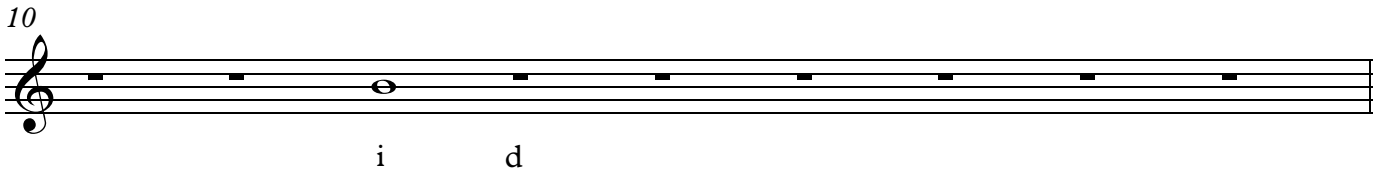


9



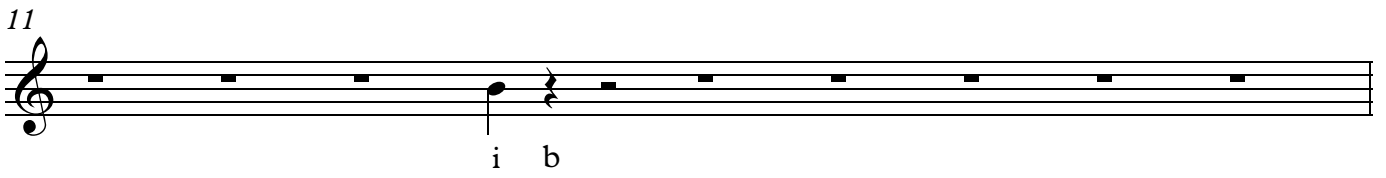
i g

10



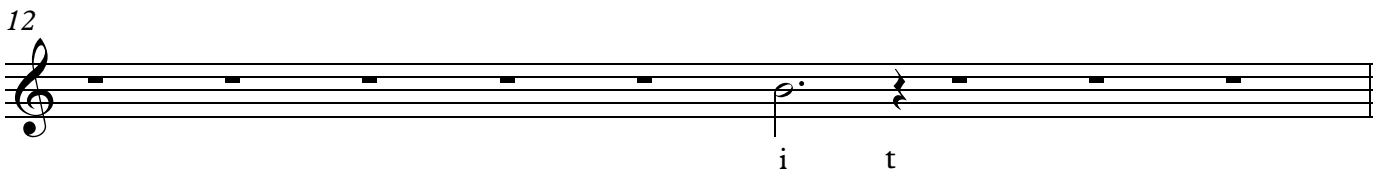
i d

11



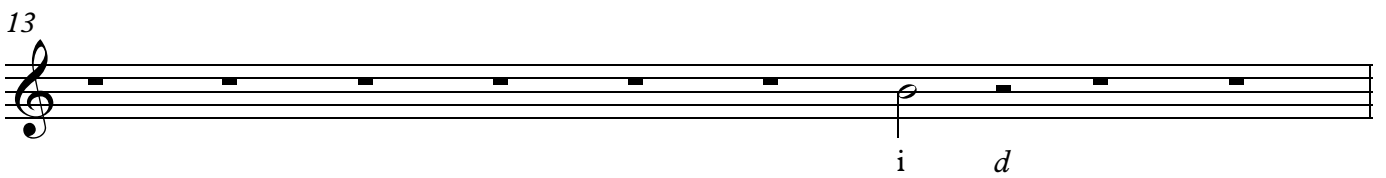
i b

12



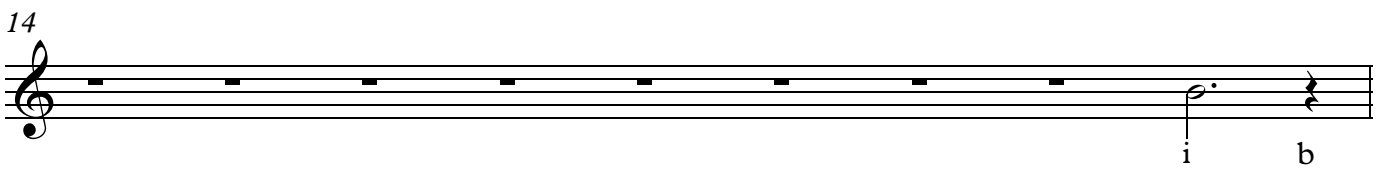
i t

13



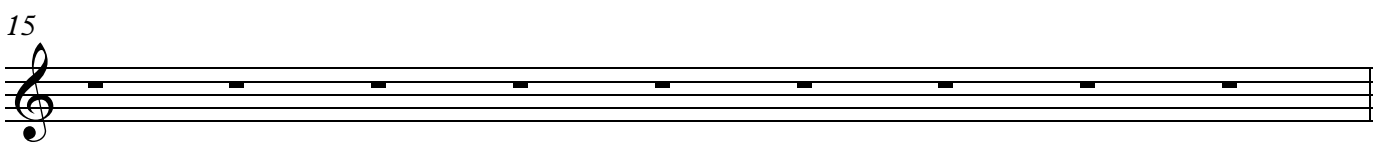
i d

14

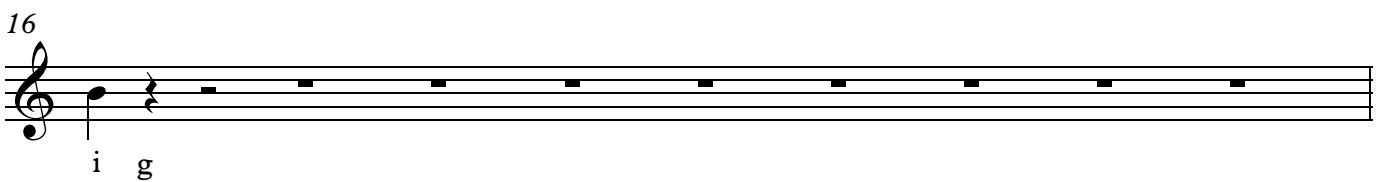


i b

15



16



i g

17

i p

18

i t

19

i b

20

i g

21

i t

22

23

i d

40:00

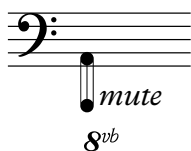
24

i b

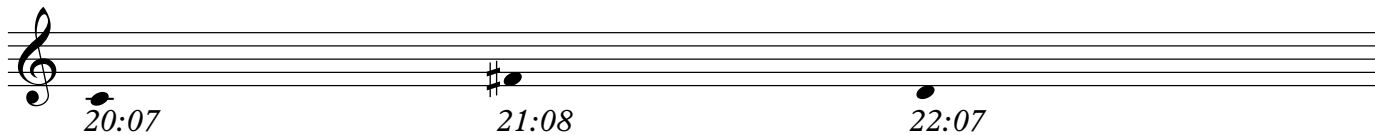
20:00

piano

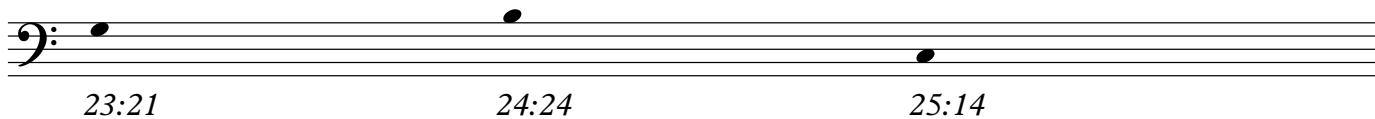
00:00



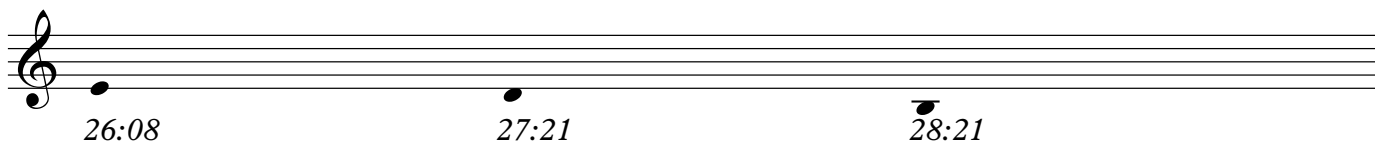
mute
8^{vb}



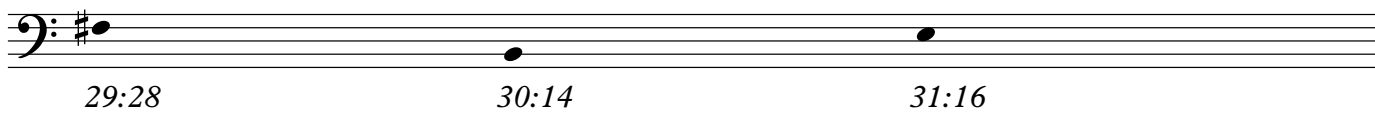
20:07 21:08 22:07



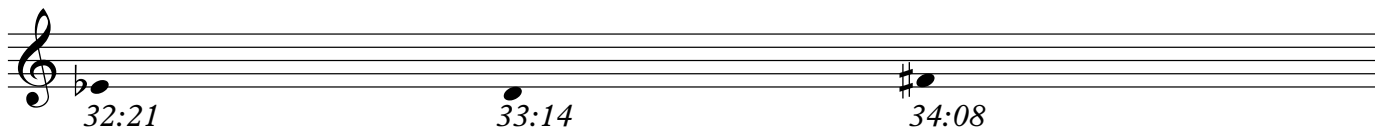
23:21 24:24 25:14



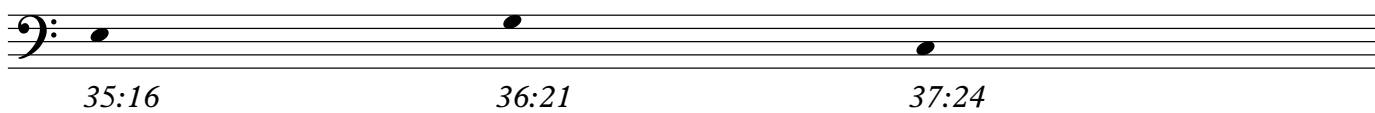
26:08 27:21 28:21



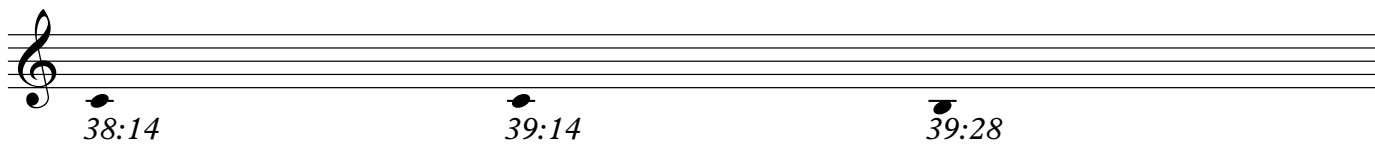
29:28 30:14 31:16



32:21 33:14 34:08



35:16 36:21 37:24



38:14 39:14 39:28