

haiku III

trombone

eva-maria houben

© edition wandelweiser **2003**

catalogue number ew16.030c

die *haikus* sind eine sammlung von solostimmen für unterschiedliche instrumente. die stimmen können einzeln oder in unterschiedlichen kombinationen nacheinander (in beliebiger reihenfolge) oder gleichzeitig aufgeführt werden. werden mehrere *haikus* gleichzeitig aufgeführt, so heißt das stück *haiku zu zweit* (z. B. *I, III*), *haiku zu dritt* (z. B. *I, II, IV*) oder *haiku zu viert* (z. B. *I, II, III, V*). die entsprechenden (römischen) ziffern, die das instrument angeben, sind im titel mit anzuführen.

the *haikus* are a collection of solo pieces for several kind of instruments: the pieces may be played as solo works or in different combination of instruments – following each other in free order – or all simultaneously.

in case several *haikus* are played simultaneously, the performance is called *haiku for two* (for example *I, III*), or *haiku for three* (for example *I, II, IV*) or *haiku for four* (for example *I, II, III, V*). the programme indicates the numbers (VI, I, X etc.) in the title.

haiku III
posaune
trombone

eva-maria houben
2003

x : ein klang, der immer gerade eben nur da war.
er ist sehr kurz, fast unhörbar leise; geräuschanteile.

• : eine ruhige ausatmung. leise.

1 ↓ : $\frac{1}{16}$ -ton tiefer;

2 ↓ : $\frac{2}{16}$ -ton tiefer;

und so fort.

sehr ruhig, ohne tempo.

zeit lassen zwischen den klängen.

das stück dauert 45 minuten.

x : a sound which appears while disappearing.
very short, nearly inaudible; noisy.

• : a quiet breath. soft.

1 ↓ : $\frac{1}{16}$ -tone lower;

2 ↓ : $\frac{2}{16}$ -tone lower;

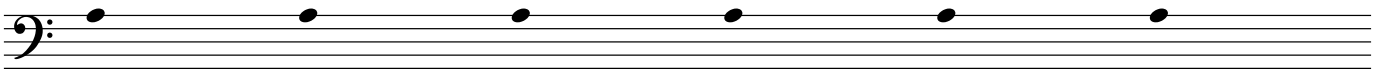
and so on.

very calm, without any tempo („senza tempo“).

take up time from sound to sound.

duration: 45 minutes.

00:00



15:00



15:00

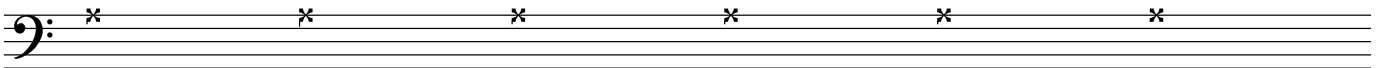
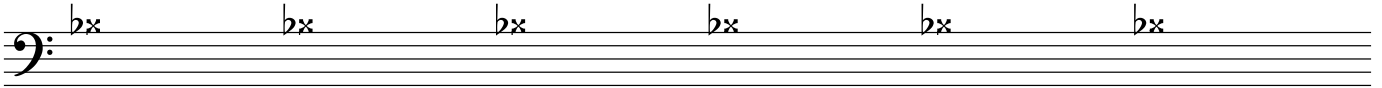
A musical staff with a bass clef and a key signature of two flats (B-flat and E-flat). The staff contains six flats, one on each line. Below the staff are five downward-pointing arrows, each labeled with a number from 1 to 5, indicating fingerings for the notes.

A musical staff with a bass clef and a key signature of two flats (B-flat and E-flat). The staff contains two flats on the first and second lines, followed by four natural notes on the second, third, fourth, and fifth lines. Below the staff are six downward-pointing arrows, labeled 6, 7, 1, 2, and 3, indicating fingerings for the notes.

30:00

A musical staff with a bass clef and a key signature of two flats (B-flat and E-flat). The staff contains four natural notes on the second, third, fourth, and fifth lines, followed by one flat on the first line. Below the staff are five downward-pointing arrows, labeled 4, 5, 6, and 7, indicating fingerings for the notes.

30:00



45:00

