

# eins ums andre

clarinet, marimba, claves, accordion

eva-maria houben

© edition wandelweiser **2003**

catalogue number ew16.032

eins ums andre

klarinette, marimba, claves und akkordeon

clarinet, marimba, claves and accordion

eva-maria houben

2003

klarinette, marimba, claves:

sechs abschnitte von jeweils fünf minuten.

die claves spielen zweimal in jedem abschnitt einen klang irgendwann.

zeit lassen zwischen den klängen von klarinette, marimba und claves.

klarinette:

ein klang: eine ruhige ausatmung, etwa fünf sekunden lang.

sehr leise.

marimba:

sehr leise.

claves:

ein kurzer, leiser klang. nie gleichzeitig mit klarinette oder marimba.

akkordeon:

alle klänge fast unhörbar leise.

balgwechsel sollten nahezu unmerklich geschehen.

den sehr langen (max. 5 minuten dauernden) klang irgendwann innerhalb der 5 minuten spielen.

dauer: 45 minuten.

clarinet, marimba, claves:

six sections, duration in each case five minutes.

claves play twice in each section, at some time or other.

take your time between the sounds of clarinet, marimba and  
claves.

clarinet:

one sound: one quiet breath, about five seconds.

very soft.

marimba:

very soft.

claves:

a short, soft sound.

never simultaneously with clarinet or marimba.

accordion:

all sounds are nearly inaudible.

bellow changes nearly imperceptible.

play the very long (maximum 5 minutes lasting) sound sometime  
during the section of 5 minutes.

duration: 45 minutes.

00:00

A musical staff with a treble clef. It contains three notes: a whole note on the first line (F4), a whole note on the second line (G4) with a sharp sign (#), and a whole note on the second space (A4). Below the staff, the word "mar" is written under each note.

A musical staff with a treble clef. It contains three notes: a whole note on the first space (E4) with a flat sign (b), a whole note on the second space (F4) with a flat sign (b), and a whole note on the second space (F4) with a flat sign (b). Below the staff, the word "klar" is written under the first two notes, and "mar" is written under the third note.

05:00

A musical staff with a treble clef. It contains four notes: a whole note on the second space (F4), a whole note on the second space (F4) with a flat sign (b), a whole note on the second space (F4), and a whole note on the second space (F4). Below the staff, the words "klar", "mar", "mar", and "klar" are written under each note respectively.

05:00

A musical staff in treble clef with three notes. The first note is a half note on the second line (F4) with a fermata, labeled 'mar'. The second note is a half note on the first space (C4) with a fermata, labeled 'klar'. The third note is a half note on the first space (C4) with a flat sign and a fermata, labeled 'klar'.

A musical staff in treble clef with three notes. The first note is a half note on the first space (C4) with a sharp sign and a fermata, labeled 'mar'. The second note is a half note on the second line (F4) with a sharp sign and a fermata, labeled 'mar'. The third note is a half note on the first space (C4) with a fermata, labeled 'klar'.

10:00

A musical staff in treble clef with four notes. The first note is a half note on the second line (F4) with a fermata, labeled 'mar'. The second note is a half note on the first space (C4) with a flat sign and a fermata, labeled 'klar'. The third note is a half note on the second line (F4) with a fermata, labeled 'klar'. The fourth note is a half note on the first space (C4) with a sharp sign and a fermata, labeled 'mar'.

10:00

A musical staff with a treble clef. The first note is a whole note on the second line (F4), with three horizontal lines above it. The second note is a whole note on the first space (C4), with two horizontal lines below it. The third note is a whole note on the second space (D4). The word "klar" is written below each note.

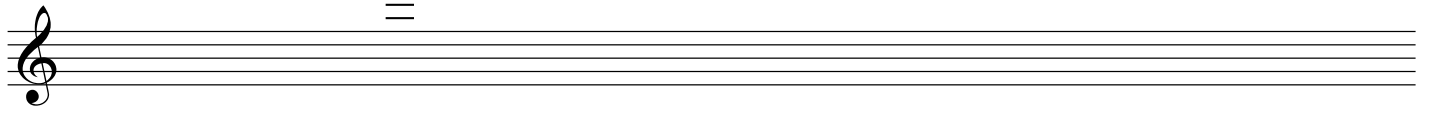
A musical staff with a treble clef. The first note is a whole note on the first space (C4), with a flat symbol (b) to its left. The second note is a whole note on the first space (C4). The third note is a whole note on the second space (D4), with a sharp symbol (#) to its left. The word "klar" is written below the first note, and "mar" is written below the second and third notes.

15:00

A musical staff with a treble clef. The first note is a whole note on the first space (C4). The second note is a whole note on the first space (C4). The third note is a whole note on the first space (C4), with a flat symbol (b) and two horizontal lines below it. The fourth note is a whole note on the second space (D4). The fifth note is a whole note on the first space (C4). The word "mar" is written below the first, third, and fifth notes, and "klar" is written below the second, fourth, and sixth notes.

15:00

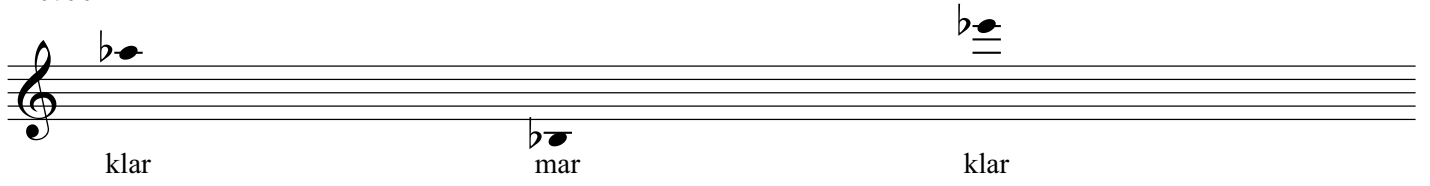
20:00



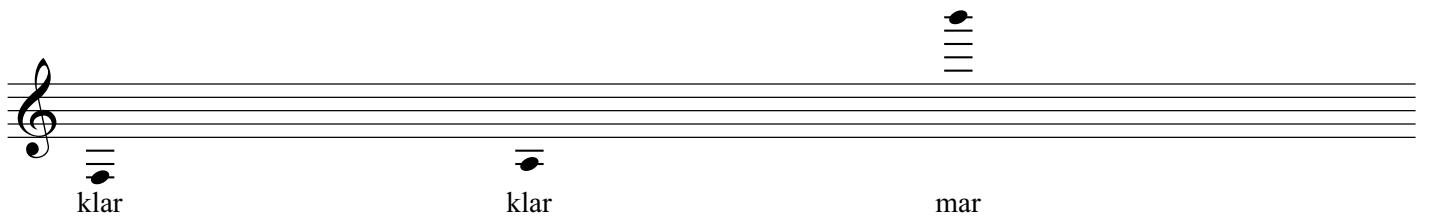
akk



20:00

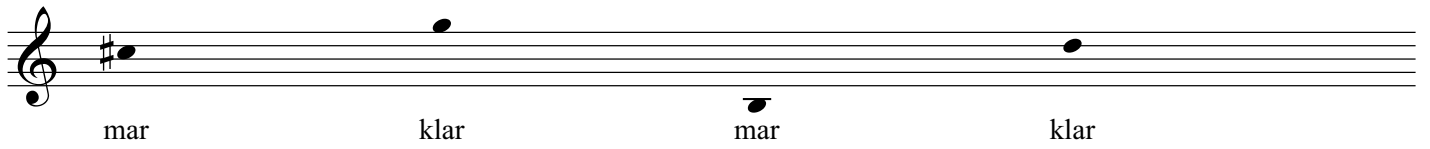


A musical staff in treble clef showing three notes. The first note is a flat B (Bb) on the second line, labeled "klar". The second note is a flat B (Bb) on the first space, labeled "mar". The third note is a flat B (Bb) on the second line, labeled "klar".



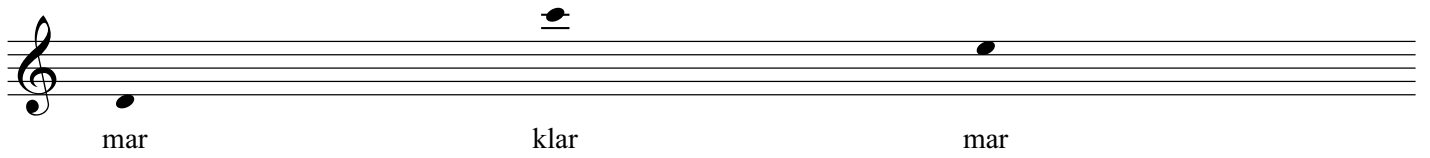
A musical staff in treble clef showing three notes. The first note is a B on the first space, labeled "klar". The second note is a B on the first space, labeled "klar". The third note is a B on the second line, labeled "mar".

25:00

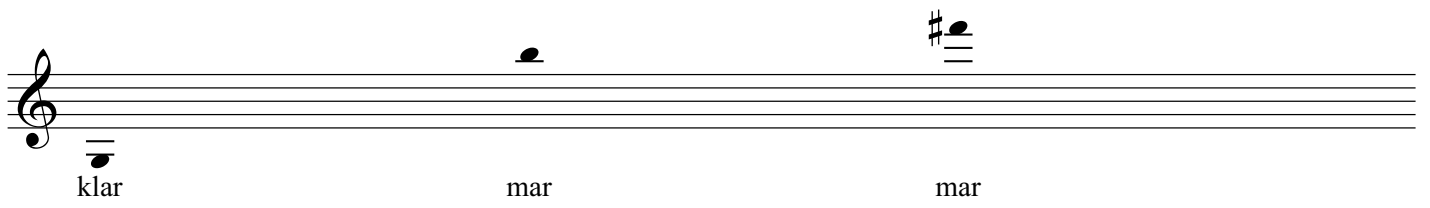


A musical staff in treble clef showing four notes. The first note is a sharp B (B#) on the second line, labeled "mar". The second note is a B on the first space, labeled "klar". The third note is a B on the first space, labeled "mar". The fourth note is a B on the second line, labeled "klar".

25:00

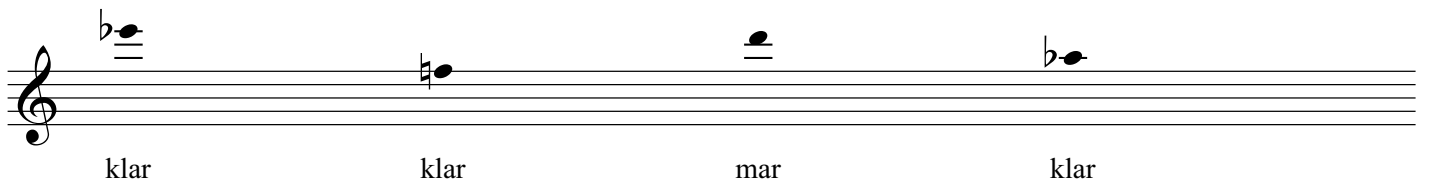


A musical staff in treble clef showing three notes. The first note is on the first line (F4) with the lyric 'mar' below it. The second note is on the second line (G4) with the lyric 'klar' below it. The third note is on the second space (A4) with the lyric 'mar' below it.



A musical staff in treble clef showing three notes. The first note is on the first space (E4) with the lyric 'klar' below it. The second note is on the second line (G4) with the lyric 'mar' below it. The third note is on the second space (A4) with a sharp sign (#) above it and the lyric 'mar' below it.

30:00



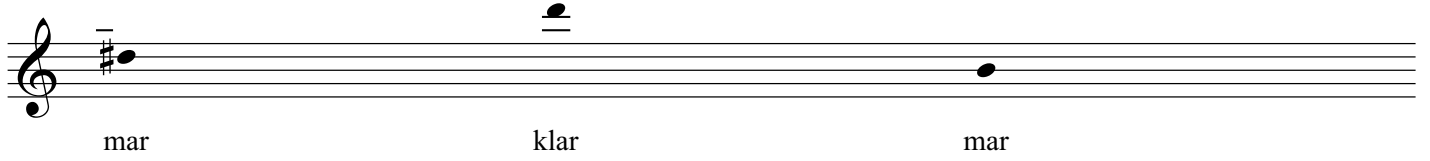
A musical staff in treble clef showing four notes. The first note is on the first space (E4) with a flat sign (b) above it and the lyric 'klar' below it. The second note is on the first line (F4) with a sharp sign (#) above it and the lyric 'klar' below it. The third note is on the second line (G4) with the lyric 'mar' below it. The fourth note is on the second space (A4) with a flat sign (b) above it and the lyric 'klar' below it.

30:00

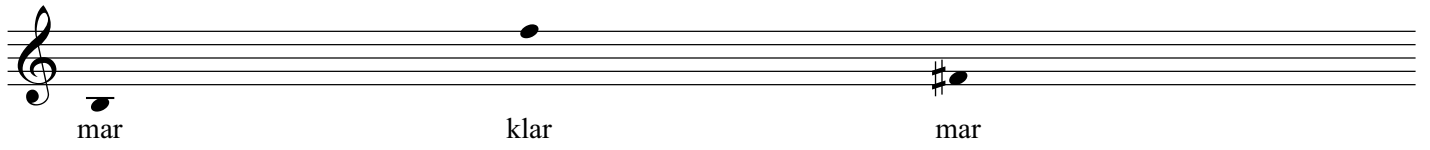
35:00

A musical staff with a treble clef on the left. A sharp sign (#) is placed on the second line of the staff, with a solid black note head on that line. Below the sharp sign and note head, the text "akk" is written.

35:00

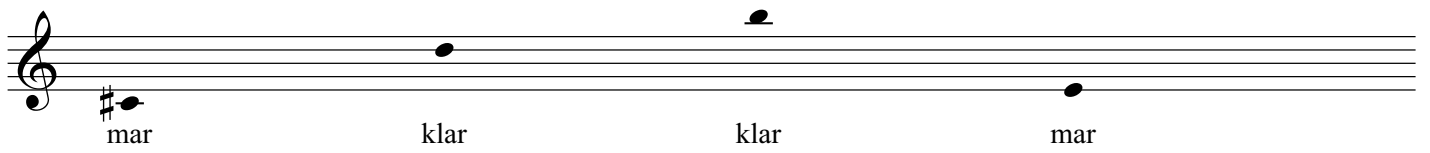


A musical staff in treble clef with a key signature of one sharp (F#). The notes are: F#4 (labeled 'mar'), G#4 (labeled 'klar'), and A4 (labeled 'mar'). The 'klar' note has a double underline.



A musical staff in treble clef with a key signature of one sharp (F#). The notes are: F#4 (labeled 'mar'), G#4 (labeled 'klar'), and A#4 (labeled 'mar').

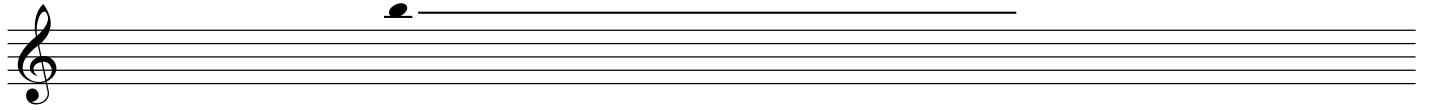
40:00



A musical staff in treble clef with a key signature of one sharp (F#). The notes are: F#4 (labeled 'mar'), G#4 (labeled 'klar'), A#4 (labeled 'klar'), and A4 (labeled 'mar').

40:00

45:00



akk