

bild an bildchen

speaker, percussion, flute, clarinet

eva-maria houben

© **edition wandelweiser 2004**

catalogue number ew16.042

bild an bildchen

sprechstimme, perkussion, flöte und klarinette

speaker, percussion, flute, clarinet

text: eva-maria houben

eva-maria houben

2004

30 seiten – 30 bilder.

einige seiten auswählen und in freier reihenfolge ausführen.

die klänge in der angegebenen reihenfolge spielen, von oben nach unten lesen.

flöte und klarinette treten als ein einziges instrument auf: sie fangen gleichzeitig an und hören gleichzeitig auf.

die perkussionsinstrumente sind frei.

perkussionen mit bestimmter tonhöhe: freie oktavlage von klang zu klang.

viertel: MM 60.

pro seite ein wort aus der liste einmal, zweimal, seltener dreimal sprechen. irgendwann sprechen, leise, ohne bestimmten ausdruck.

30 pages – 30 images.

choose several pages and perform them in free order.

play the sounds in the given order, read from top to bottom.

flute and clarinet perform like one single instrument: they begin simultaneously and stop simultaneously.

the percussion instruments are free.

pitched percussions: any octaves from sound to sound.

quarter note: MM 60.

per page utter one word of the list once, twice, or – seldom – three times. speak anytime, softly, without a special emphasis.

sprecher / speaker

german / english

oft

manchmal

kaum noch

ab und zu

eigentlich

da

vielleicht

auch

doch

fast

eine zeitlang

noch einmal

das ein oder andere mal

nur

auf einmal

hin und wieder

wirklich

denn

einmal

längere zeit

vermutlich

selten

irgendwann

niemals

einst

dann

von daher

ziemlich

fast nichts

einige

often

sometimes

barely

now and then

actually

since

maybe

also

however

nearly

for a while

once again

one time or another

just

at once

occasionally

really

because

once

a longer period of time

presumably

seldom

anytime

never

once upon a time

then

therefore

rather

nearly nothing

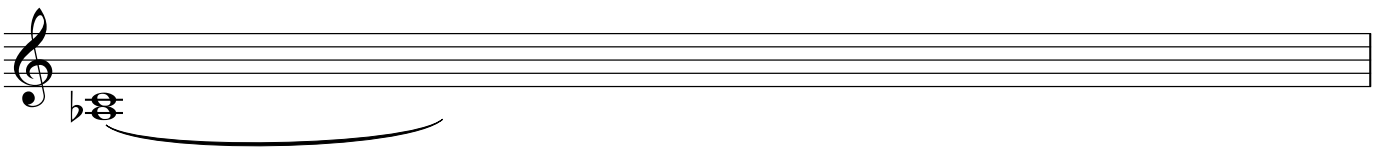
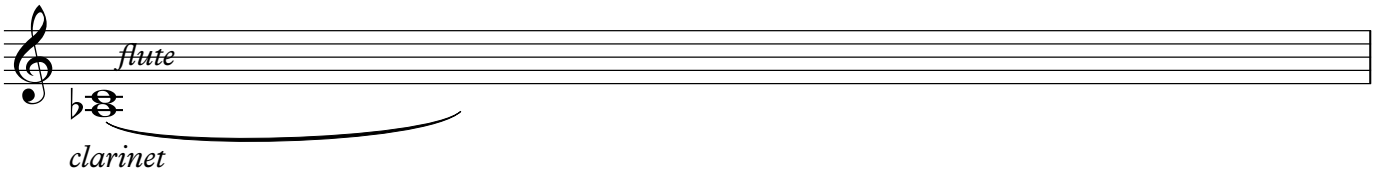
several

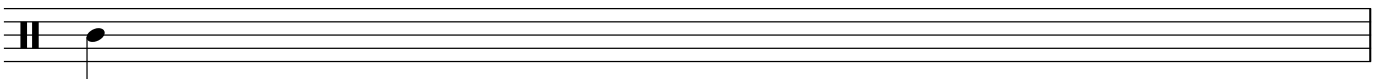
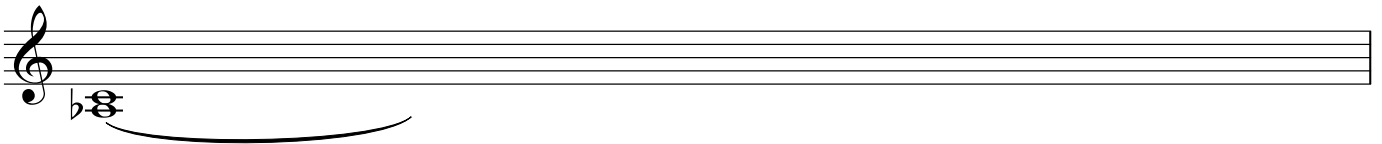
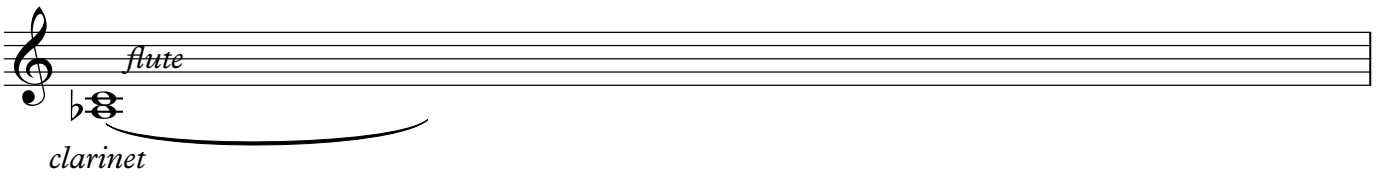
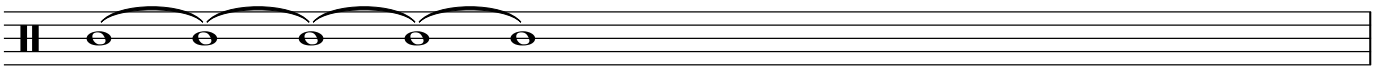
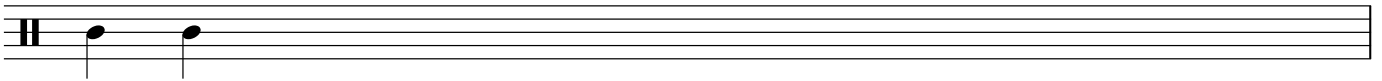
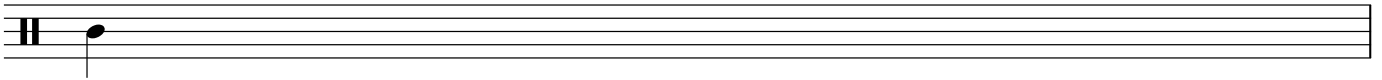


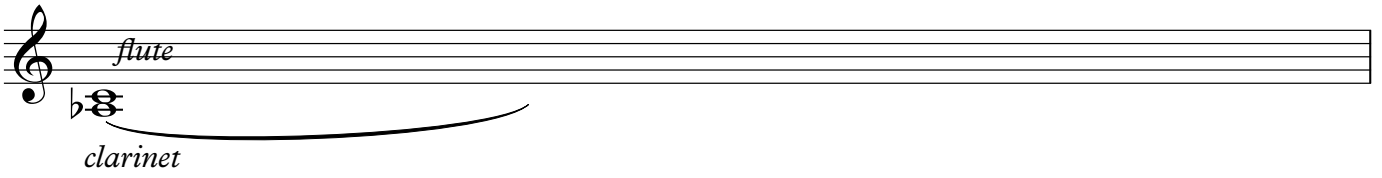
A musical staff with a treble clef. A brace is positioned below the staff, with the word "flute" written above the staff and "clarinet" written below the staff. The brace spans the entire length of the staff.

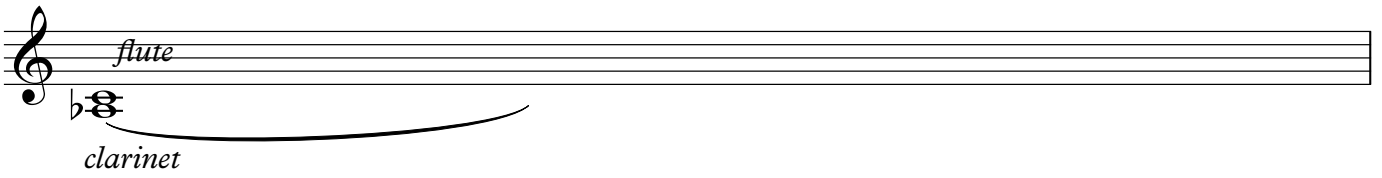


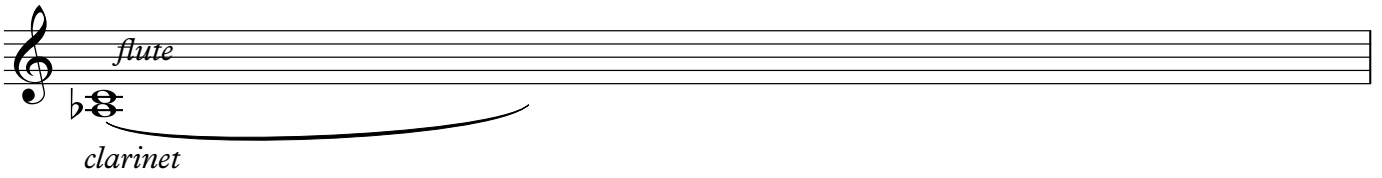
A musical staff with a treble clef. A brace is positioned below the staff, with the word "flute" written above the staff and "clarinet" written below the staff. The brace spans the entire length of the staff.

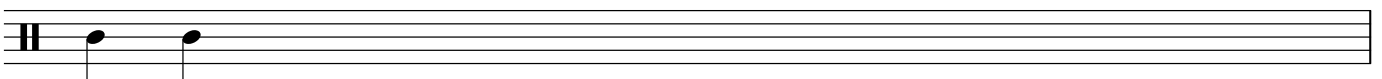
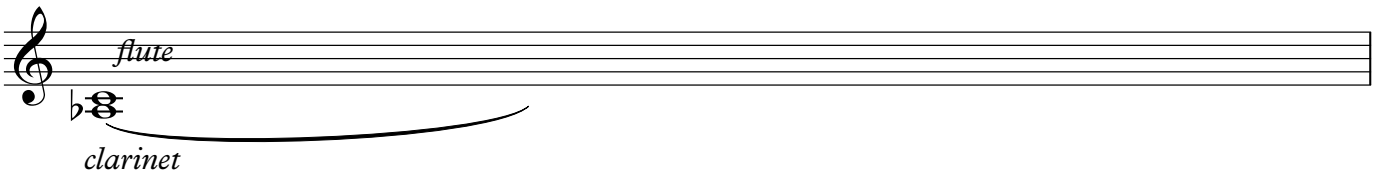
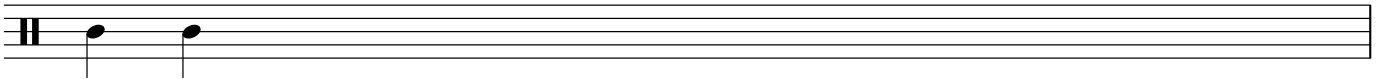


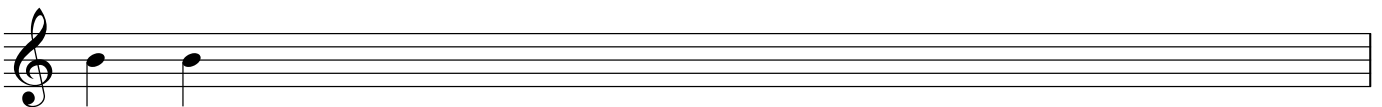
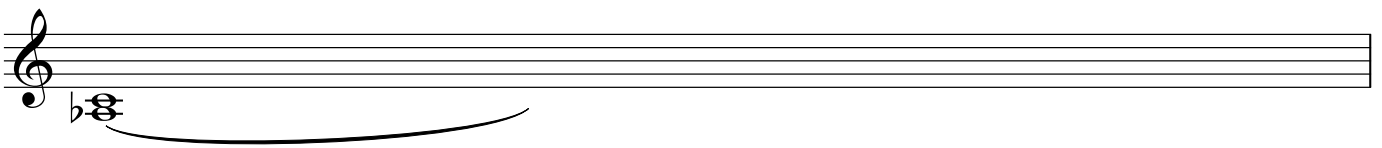
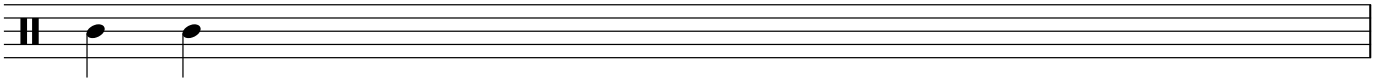
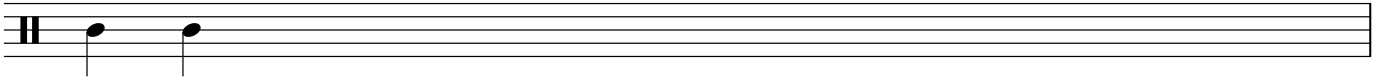
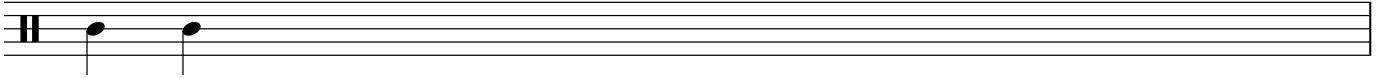
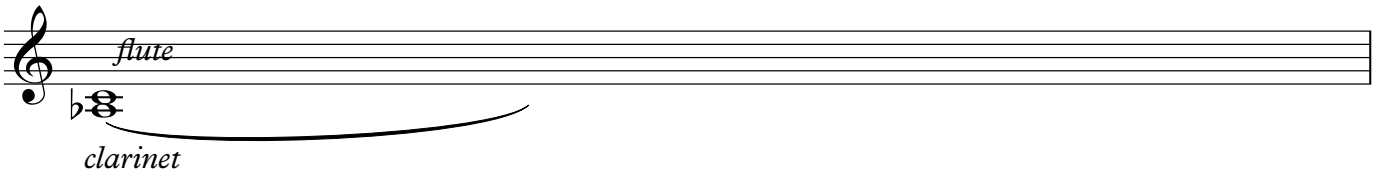
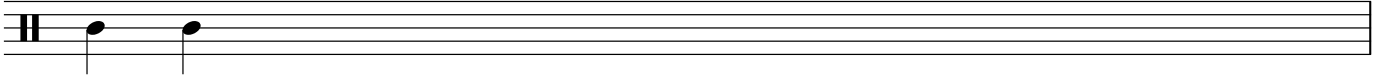
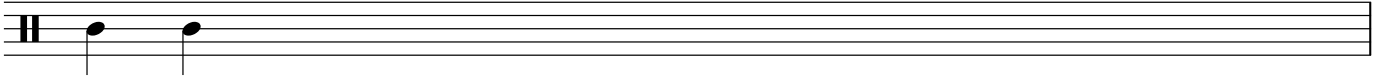


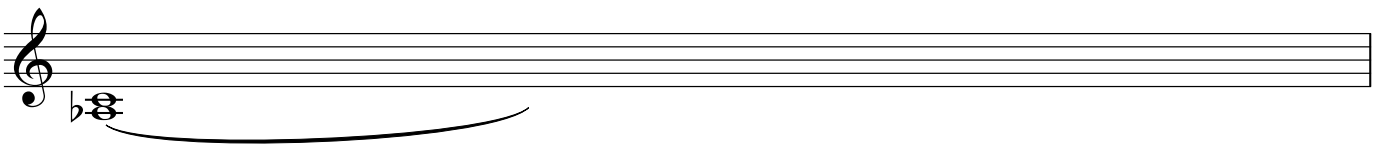
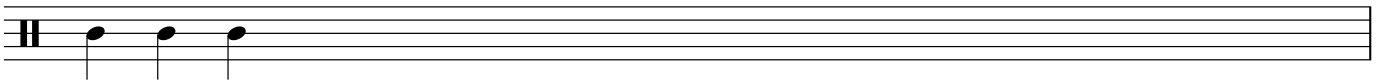
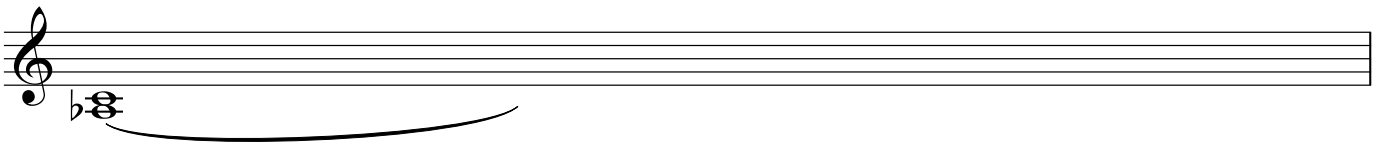
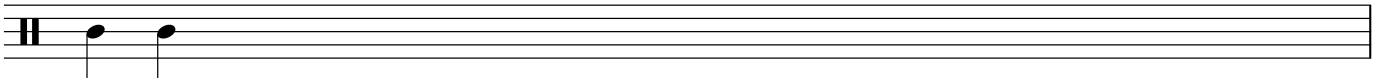
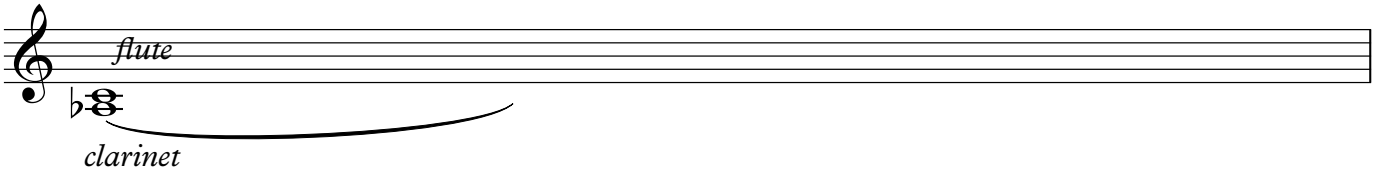
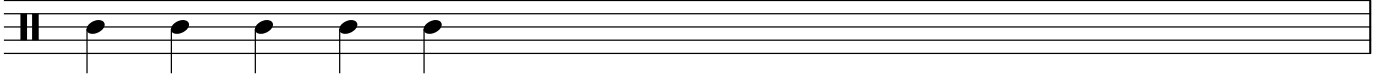










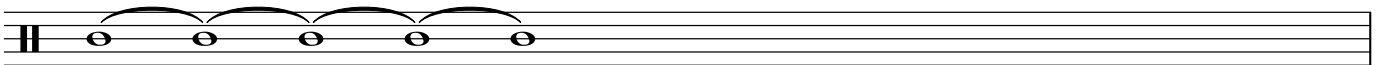




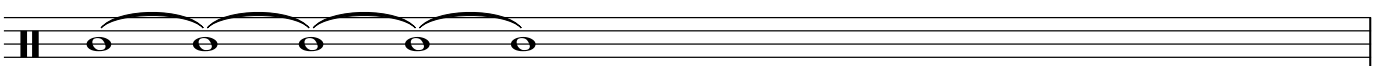
flute

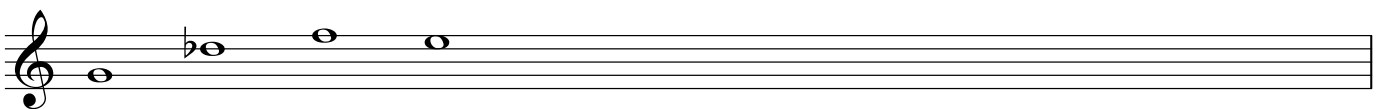
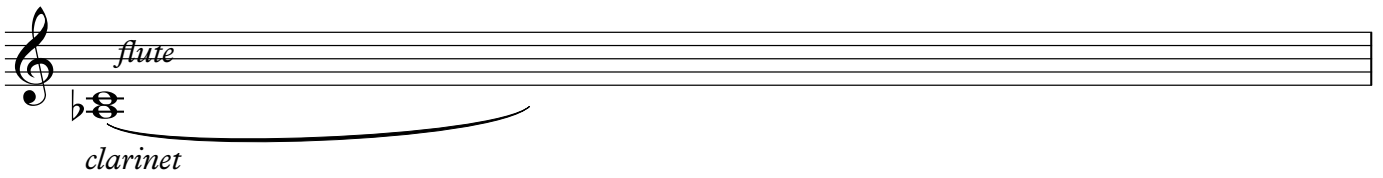
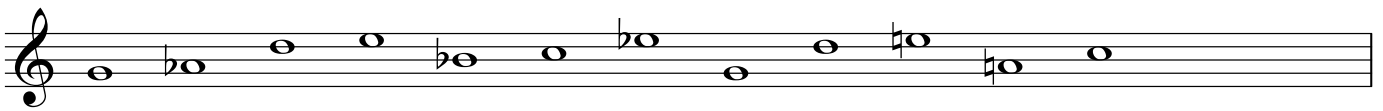
A musical staff with a treble clef and a key signature of one flat. It contains a long slur that spans the entire staff, indicating a sustained note or a long breath for the flute.

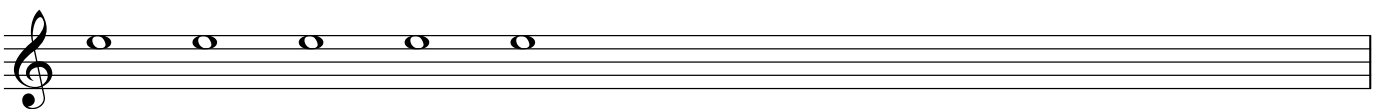
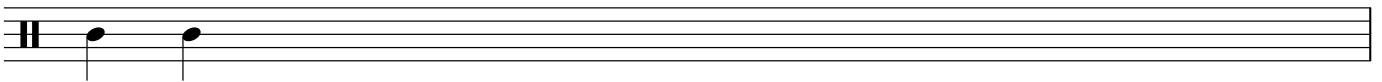
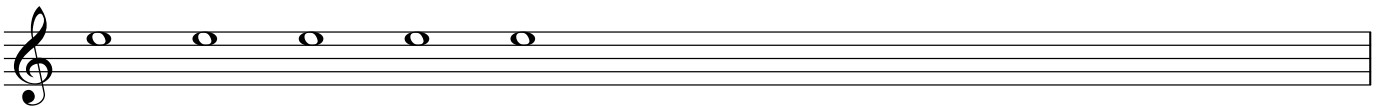
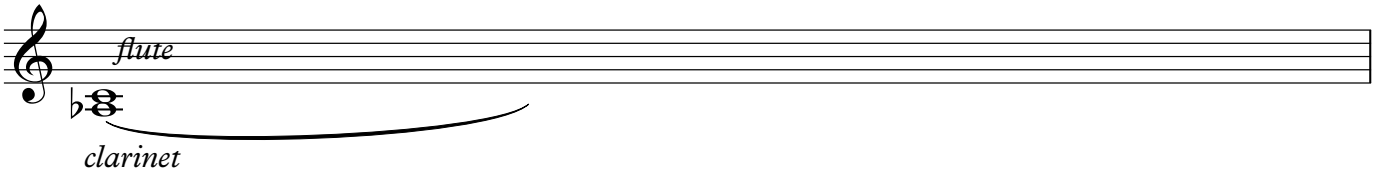
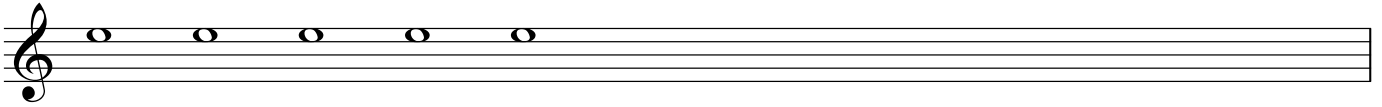
clarinet

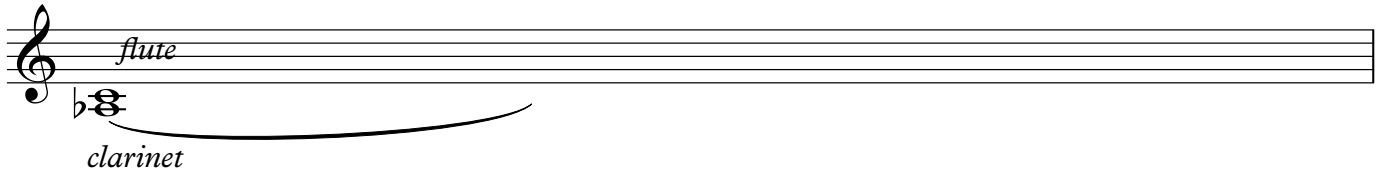


A musical staff with a treble clef and a key signature of one flat. It contains a long slur that spans the entire staff, indicating a sustained note or a long breath for the clarinet.





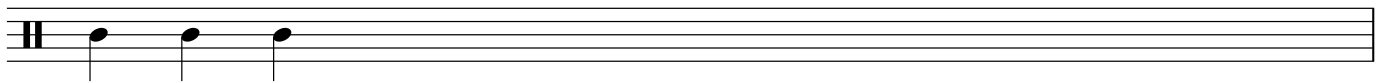




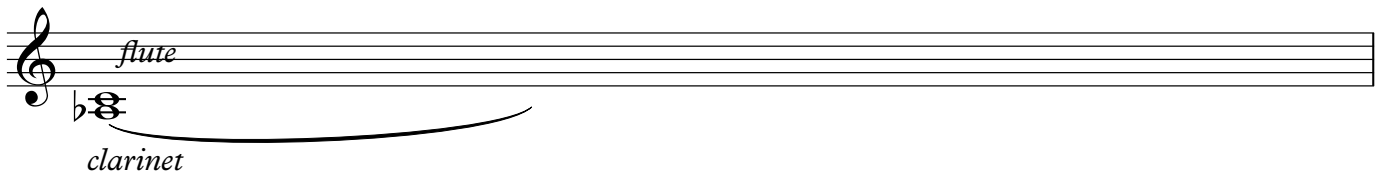
flute

clarinet

A musical staff with a treble clef and a key signature of one flat (B-flat). The word "flute" is written above the staff. Below the staff, a bass clef with a flat is shown, with the word "clarinet" written below it. A long, thin slur is drawn under the staff, starting from the first measure and extending across the entire staff.



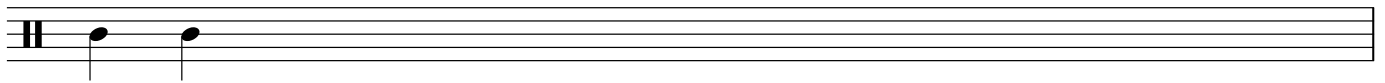
A musical staff with a common time signature (C) and a key signature of one flat (B-flat). It contains three quarter notes on the first three lines of the staff.



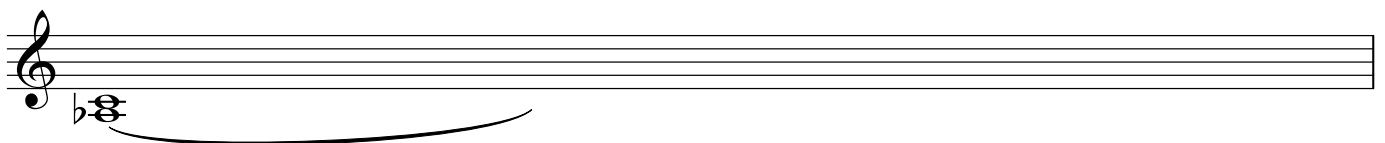
flute

clarinet

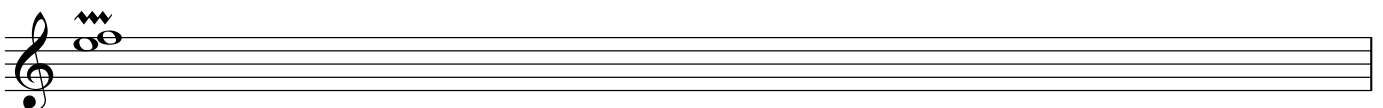
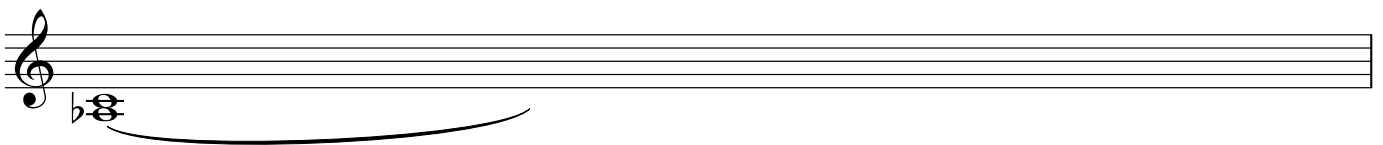
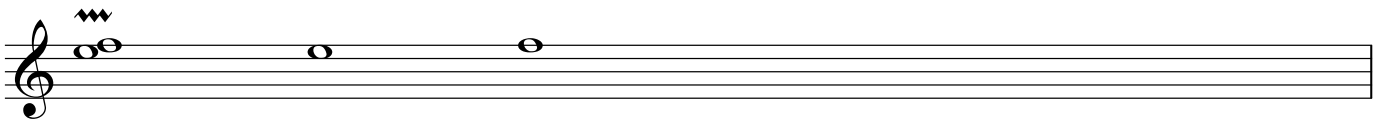
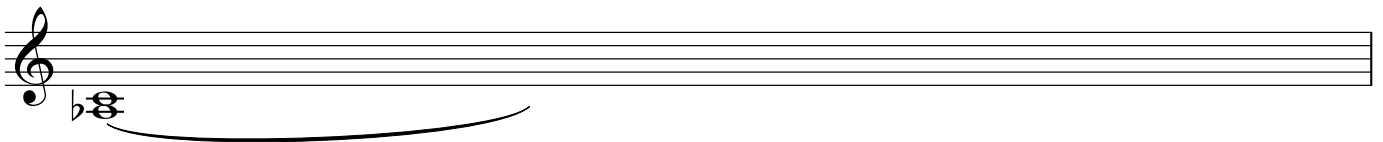
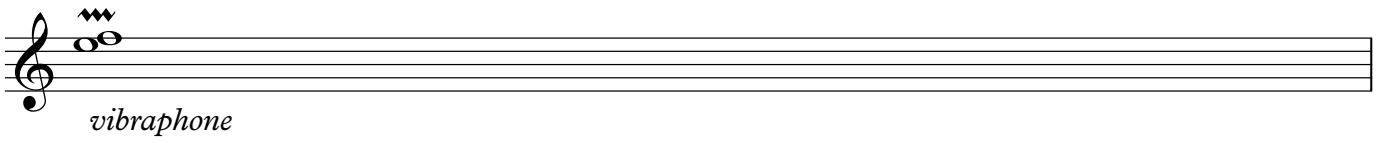
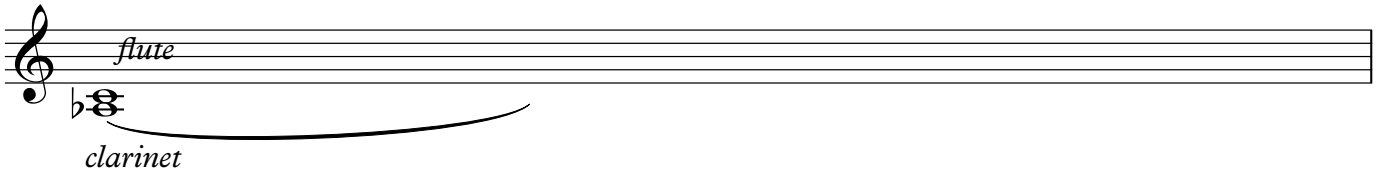
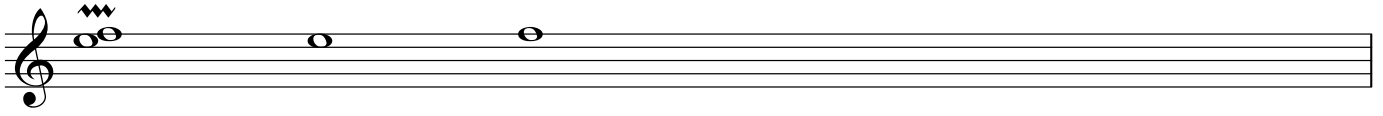
A musical staff with a treble clef and a key signature of one flat (B-flat). The word "flute" is written above the staff. Below the staff, a bass clef with a flat is shown, with the word "clarinet" written below it. A long, thin slur is drawn under the staff, starting from the first measure and extending across the entire staff.



A musical staff with a common time signature (C) and a key signature of one flat (B-flat). It contains two quarter notes on the first and second lines of the staff.



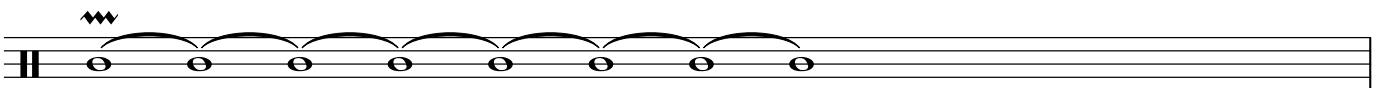
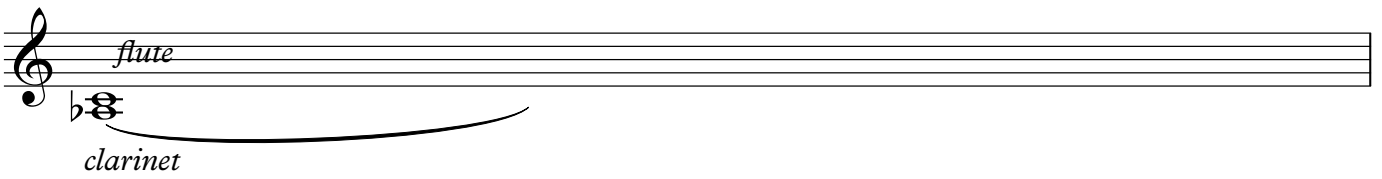
A musical staff with a treble clef and a key signature of one flat (B-flat). Below the staff, a bass clef with a flat is shown. A long, thin slur is drawn under the staff, starting from the first measure and extending across the entire staff.

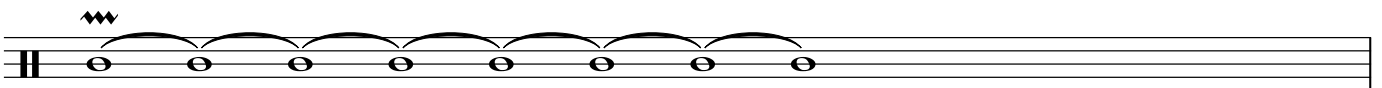
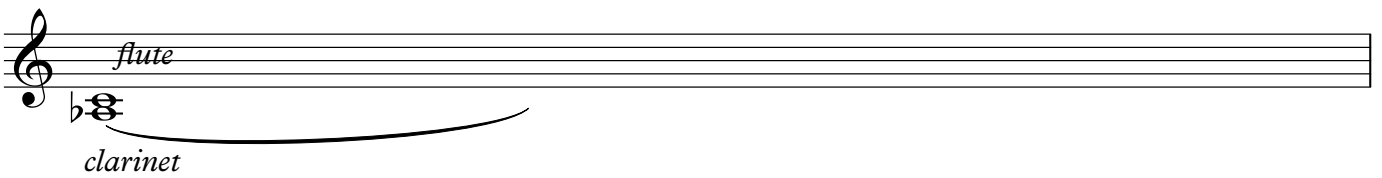
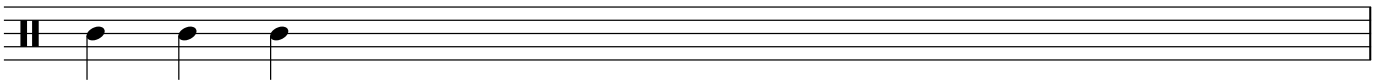
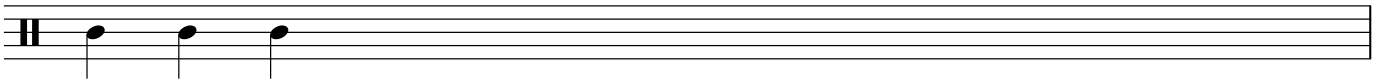


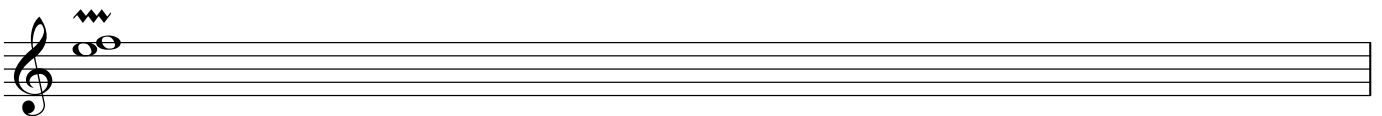
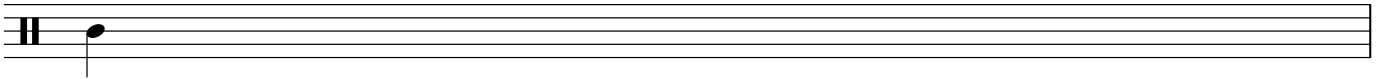
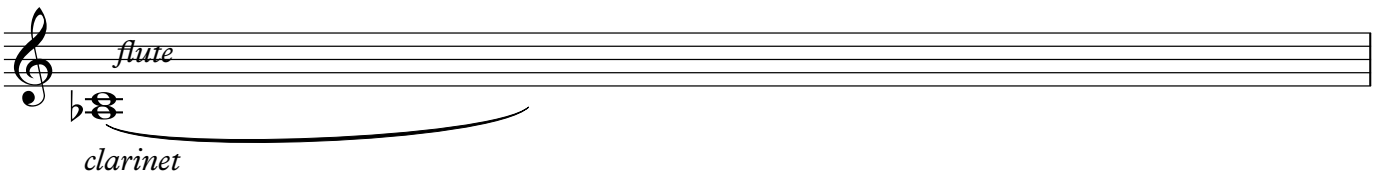
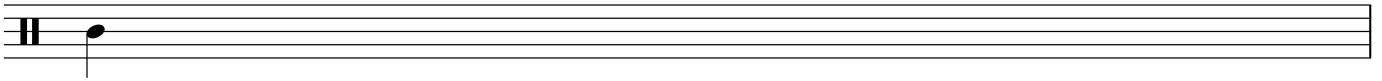
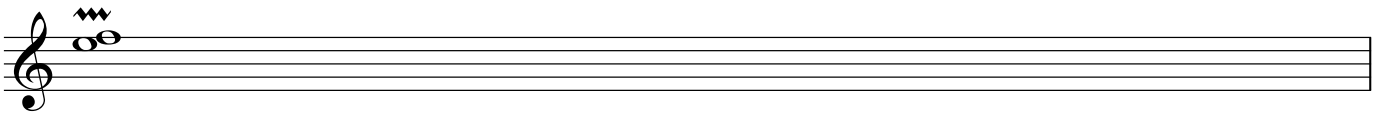
A musical staff with a treble clef. The word "flute" is written above the staff. Below the staff, there is a bass clef with a flat sign and the word "clarinet" written below it. A long, thin slur is drawn under the staff, starting from the beginning and extending to the right.

A musical staff with a treble clef. It contains a sequence of 14 quarter notes on a single pitch, starting from the middle line of the staff and extending to the right.

A musical staff with a treble clef. Below the staff, there is a bass clef with a flat sign. A long, thin slur is drawn under the staff, starting from the beginning and extending to the right.







A musical staff consisting of two five-line staves. The top staff begins with a treble clef and the word *flute* written above it. The bottom staff begins with a bass clef and the word *clarinet* written below it. A long, thin horizontal line spans across both staves, starting from the first line of the top staff and ending at the first line of the bottom staff. A curved line is drawn below the bottom staff, starting from the first line and extending to the right.

A musical staff with a treble clef and a key signature of one flat (B-flat). The staff contains a series of eight quarter notes, each with a slur above it. The notes are positioned on the first line, second space, second space, second space, second space, second space, second space, and second space. A double bar line is located at the beginning of the staff, and a wavy line is positioned above the first note.

A musical staff with a treble clef. The word "flute" is written above the staff. Below the staff, a bass clef is shown with a slur underneath it, and the word "clarinet" is written below the slur.

A musical staff with a double bar line at the beginning, followed by a single eighth note on the first line.

A musical staff with a treble clef. A slur is drawn under the staff, starting from the beginning and extending across the entire staff.

A musical staff with a double bar line at the beginning, followed by a single eighth note on the first line.

A musical staff with a treble clef. The word "flute" is written above the staff. Below the staff, the word "clarinet" is written with a bass clef symbol. A long, thin slur is drawn under the staff, extending across most of its length.

A musical staff with a treble clef. A long, thin slur is drawn under the staff, extending across most of its length.

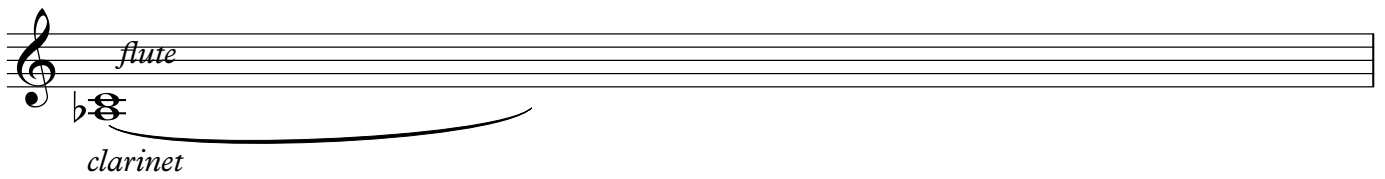
A musical staff with a treble clef. A long, thin slur is drawn under the staff, extending across most of its length.

A musical staff starting with a double bar line. Above the first few notes is a wavy line. The staff contains a series of eight quarter notes, each with a slur above it, connected by a larger slur.

A musical staff with a treble clef. The word "flute" is written above the staff. Below the staff, a bass clef is shown with the word "clarinet" written below it. A long, thin slur is drawn under the staff, starting from the beginning and extending across most of the staff.

A musical staff with a treble clef. Below the staff, a bass clef is shown. A long, thin slur is drawn under the staff, starting from the beginning and extending across most of the staff.

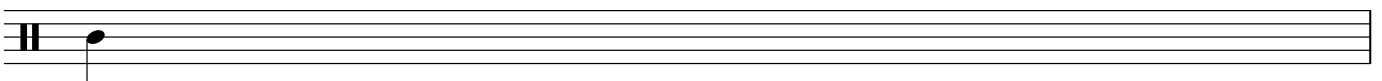
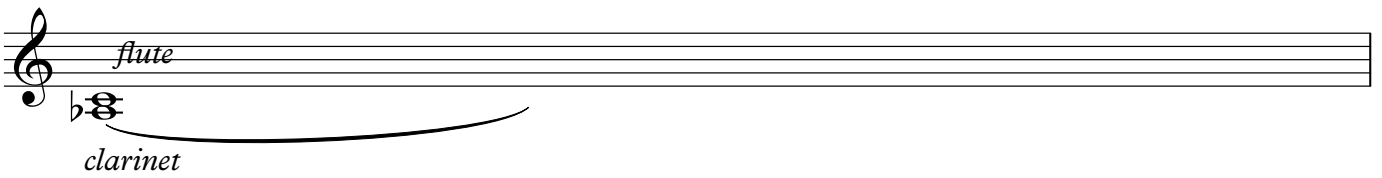
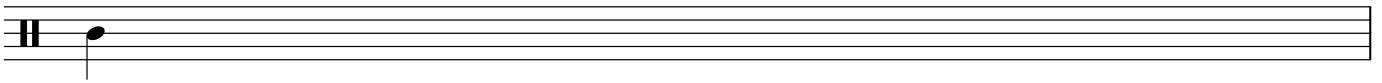
A musical staff starting with a double bar line. The staff contains a series of notes, each with a stem pointing downwards, representing a sequence of notes.

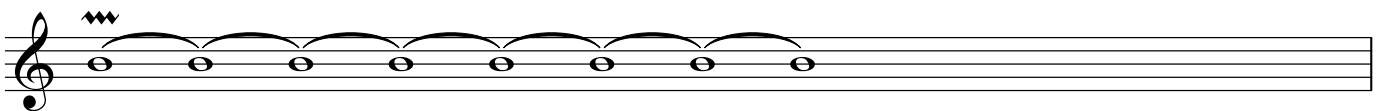
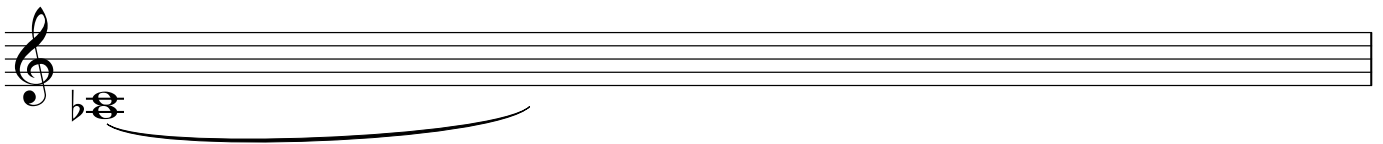
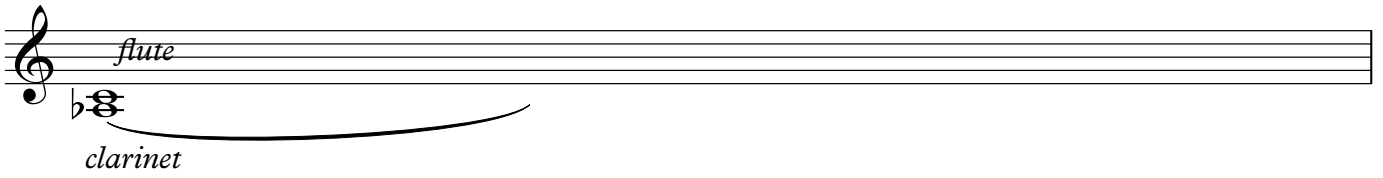


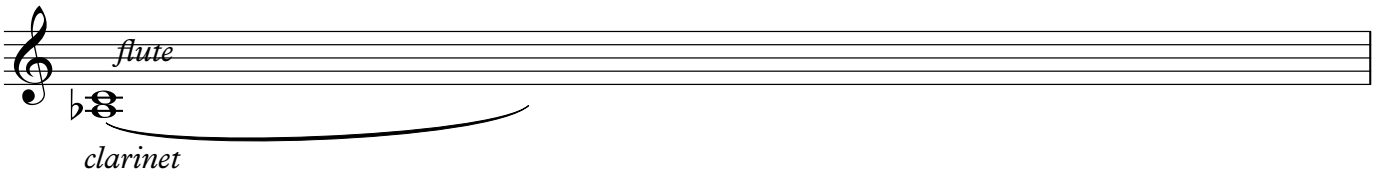
A musical staff with a treble clef. The word "flute" is written above the staff. Below the staff, a bracket spans across the staff, with the word "clarinet" written below the bracket. The staff is otherwise empty.

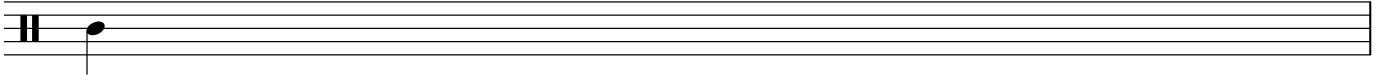
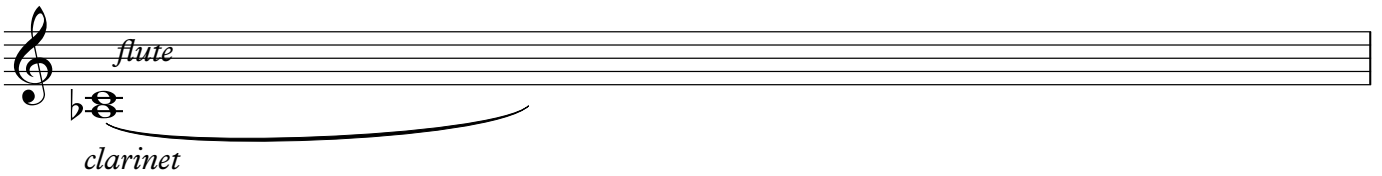
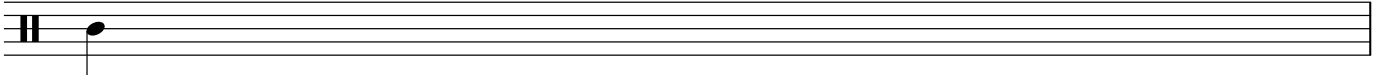
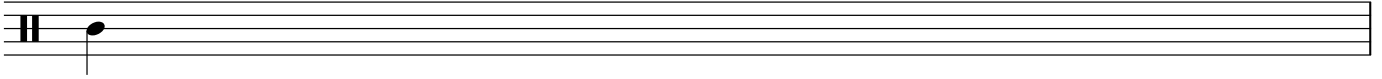
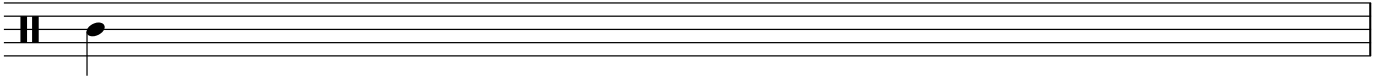
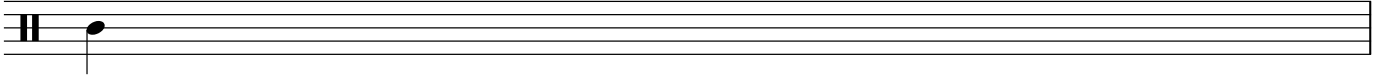
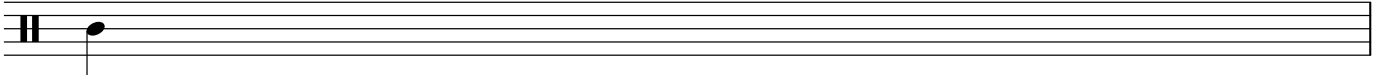


A musical staff starting with a double bar line. It contains eight quarter notes, each with a stem pointing downwards, arranged in a sequence across the staff.

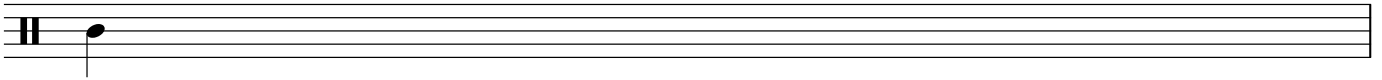




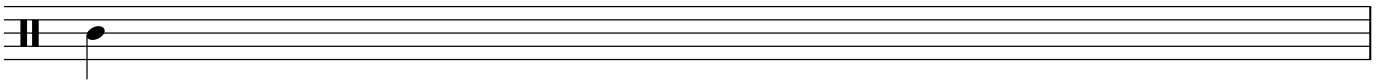




115



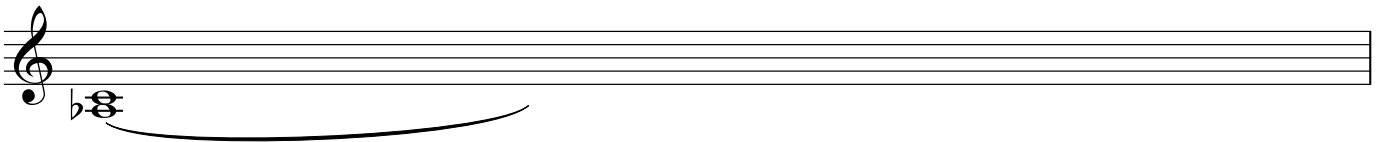
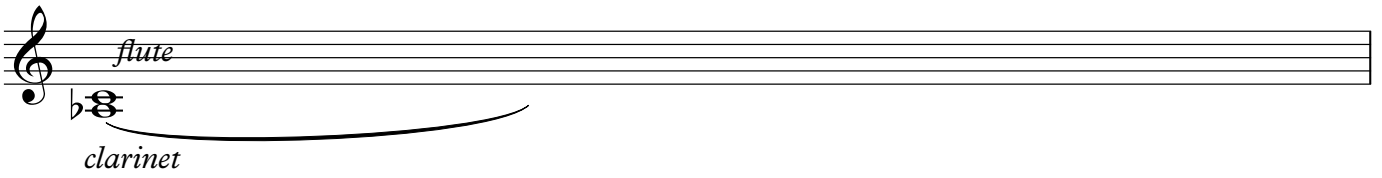
116





flute

clarinet



A musical staff with a treble clef. The word "flute" is written above the staff. Below the staff, there is a bass clef with a flat sign (B-flat) and the word "clarinet" written below it. A long, curved slur is drawn under the staff, starting from the beginning and extending across most of the staff.

A musical staff with a treble clef. Below the staff, there is a bass clef with a flat sign (B-flat). A long, curved slur is drawn under the staff, starting from the beginning and extending across most of the staff.

A musical staff with a treble clef. Below the staff, there is a bass clef with a flat sign (B-flat). A long, curved slur is drawn under the staff, starting from the beginning and extending across most of the staff.

A musical staff with a treble clef. It contains a sequence of notes: a quarter note on G4, a quarter note on A4, a quarter note on B4, a quarter note on C5, a pair of beamed eighth notes on B4 and A4, and a pair of beamed eighth notes on G4 and F4.