

zeitkonserven

flute, clarinet, trombone, violoncello

eva-maria houben

© edition wandelweiser **2004**

catalogue number ew16.053

zeitkonserven

originally for flute, clarinet, trombone, and cello

eva-maria houben

2004

„Zeit ist nur da, wenn Zeit aufgehört hat.“

„Das Gedicht ist eine Zeitkonserve.“

Hilde Domin, Das Gedicht als Augenblick von Freiheit. Frankfurter Poetik-Vorlesungen 1987/1988 (III. Vorlesung: Autor und Leser als Zwillinge. Das Gedicht, der unverbrauchbare Gebrauchsgegenstand: Zur Schreibpraxis.), Frankfurt/M.: Fischer 1993, 48, 49.

21 pages.

any collection.

any order.

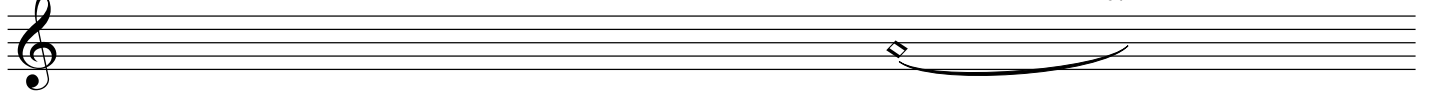
very soft.

clarinet:

sound as notation.

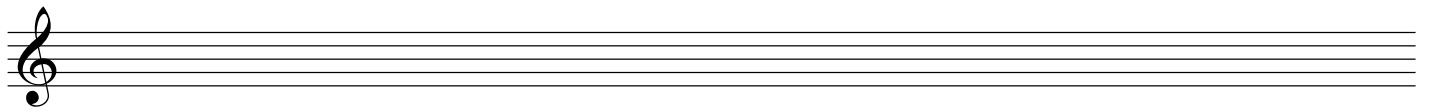
flute

0:35 0:42



A musical staff for the flute, starting with a treble clef. A slur is placed over the staff, beginning at the 0:35 mark and ending at the 0:42 mark. A small diamond-shaped symbol is positioned at the start of the slur.

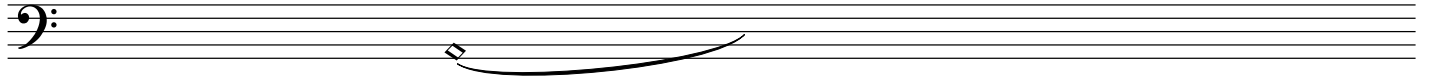
clarinet



An empty musical staff for the clarinet, starting with a treble clef.

trombone

0:20 0:27



A musical staff for the trombone, starting with a bass clef. A slur is placed over the staff, beginning at the 0:20 mark and ending at the 0:27 mark. A small diamond-shaped symbol is positioned at the start of the slur.

cello

0:10 0:54



A musical staff for the cello, starting with a bass clef. A slur is placed over the staff, beginning at the 0:10 mark and ending at the 0:54 mark. A small diamond-shaped symbol is positioned at the start of the slur.

0:50 0:58

A musical staff with a treble clef. A slur is drawn over the staff, starting at the 0:50 mark and ending at the 0:58 mark.

0:32 0:47

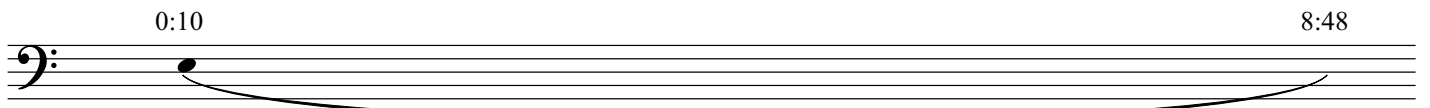
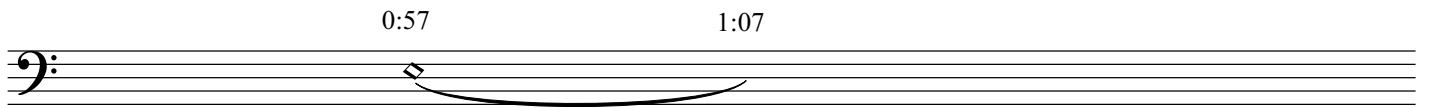
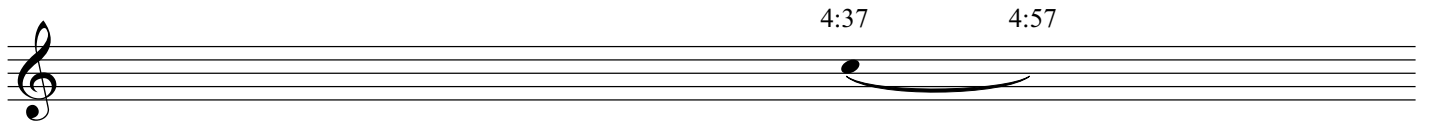
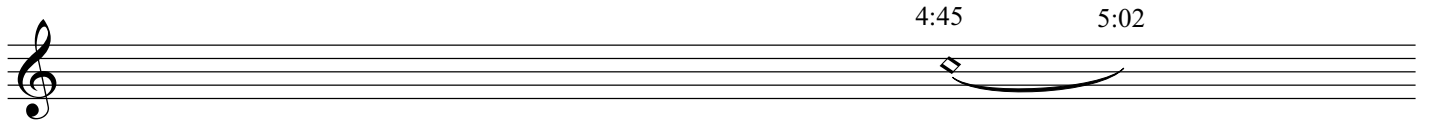
A musical staff with a treble clef. A slur is drawn over the staff, starting at the 0:32 mark and ending at the 0:47 mark.

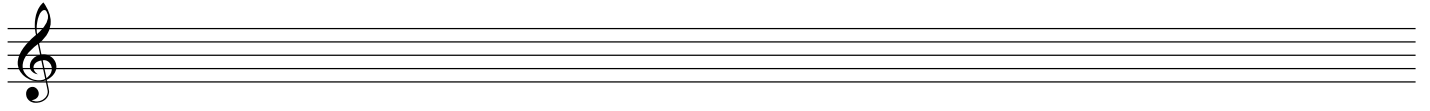
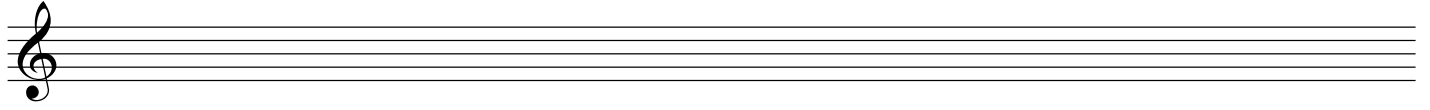
0:28 0:54

A musical staff with a bass clef. A slur is drawn over the staff, starting at the 0:28 mark and ending at the 0:54 mark.

0:10 1:02

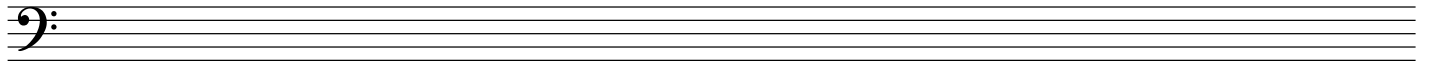
A musical staff with a bass clef. A slur is drawn over the staff, starting at the 0:10 mark and ending at the 1:02 mark.





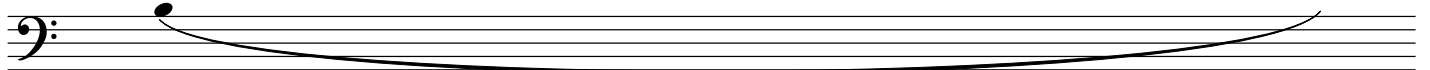
0:18

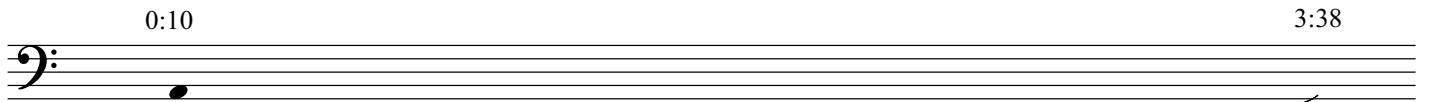
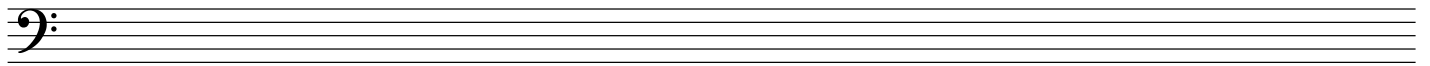
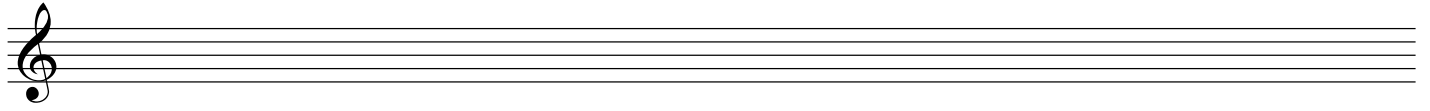
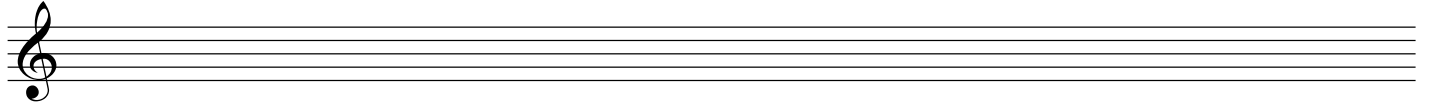
0:21

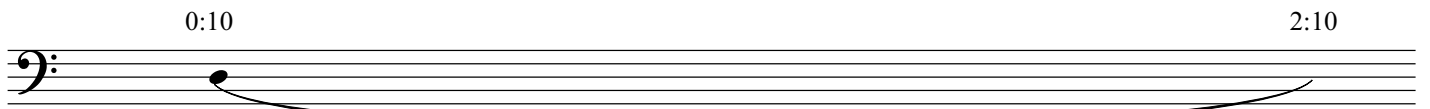
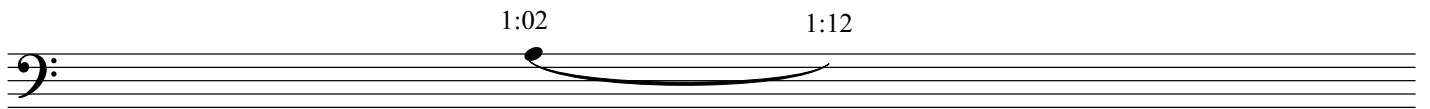
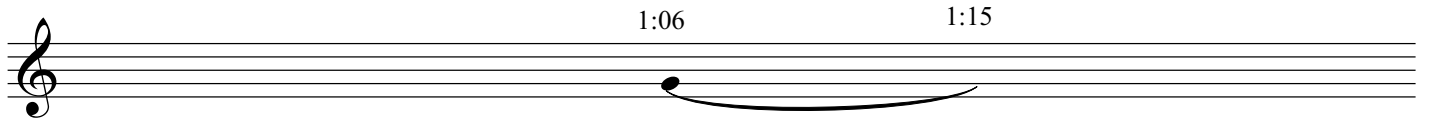
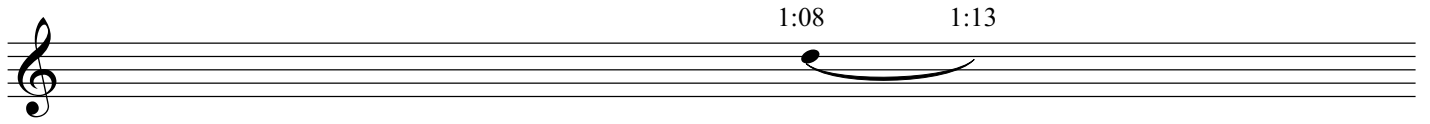


0:10

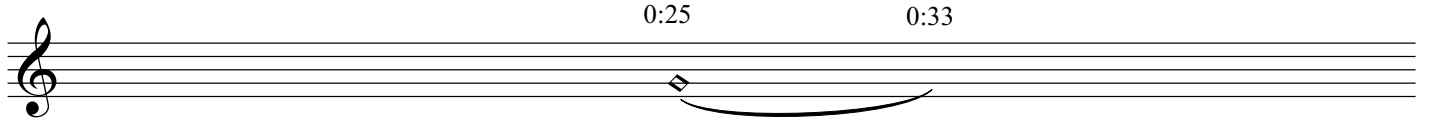
0:31



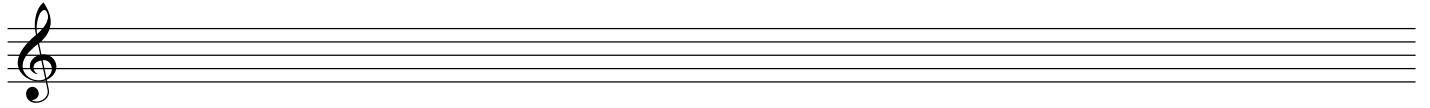




0:25 0:33

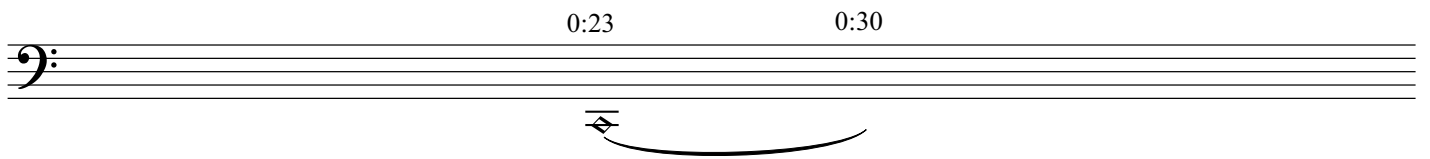


A musical staff with a treble clef. A diamond-shaped note is positioned on the second line of the staff. A slur extends from the diamond to the right, ending at the 0:33 mark. The time markers 0:25 and 0:33 are placed above the staff.



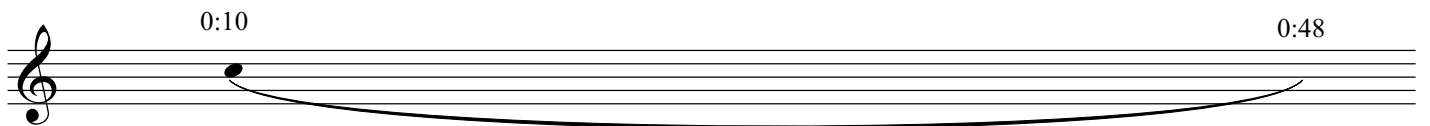
An empty musical staff with a treble clef.

0:23 0:30

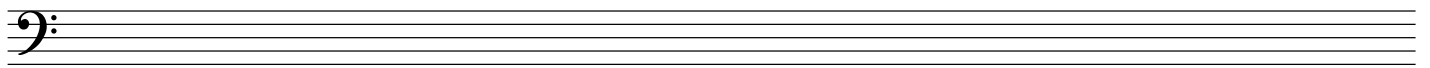
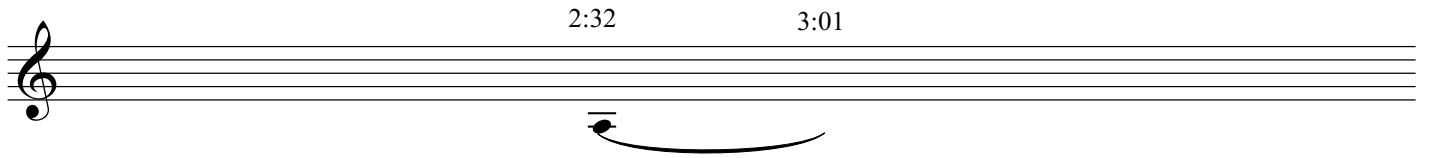
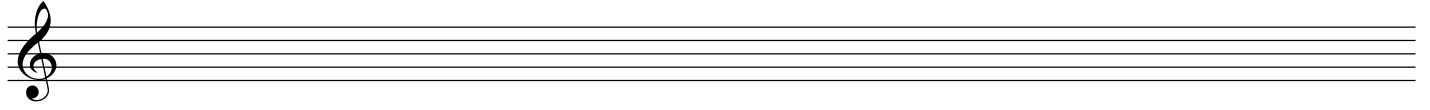


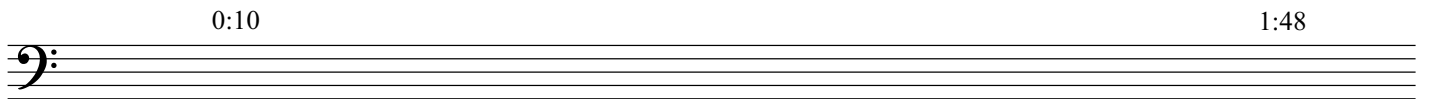
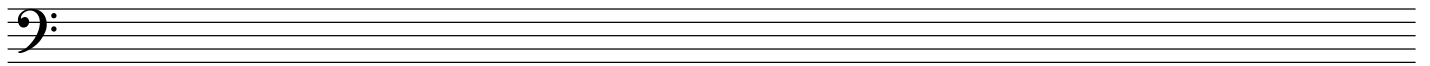
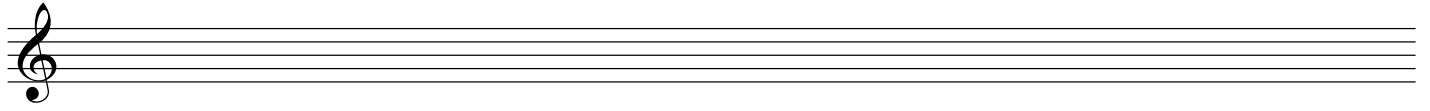
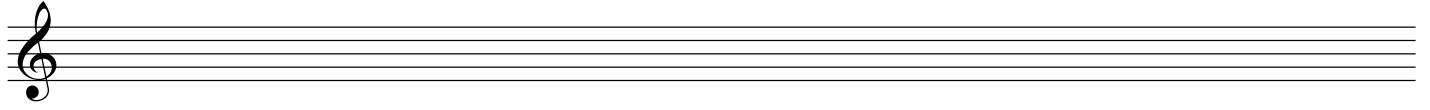
A musical staff with a bass clef. A diamond-shaped note is positioned on the second line of the staff. A slur extends from the diamond to the right, ending at the 0:30 mark. The time markers 0:23 and 0:30 are placed above the staff.

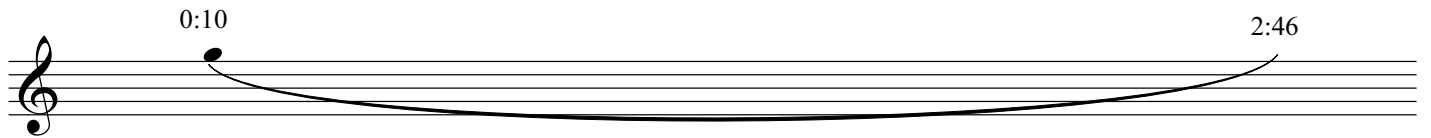
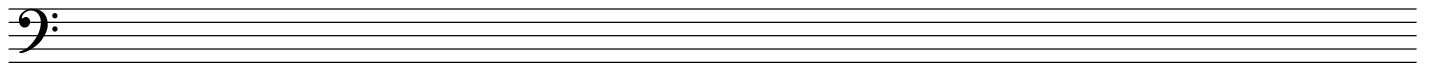
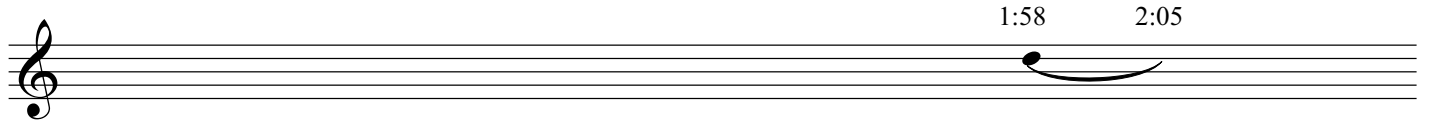
0:10 0:48

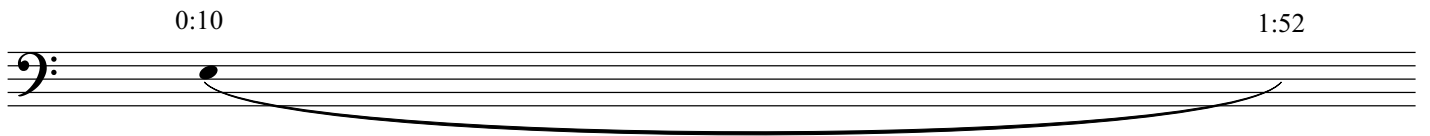
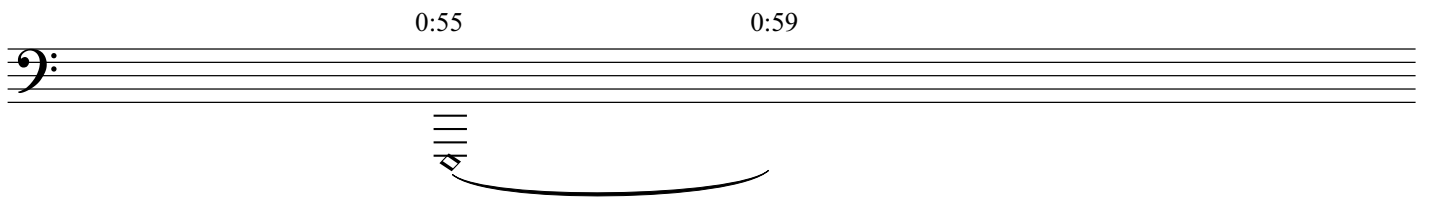
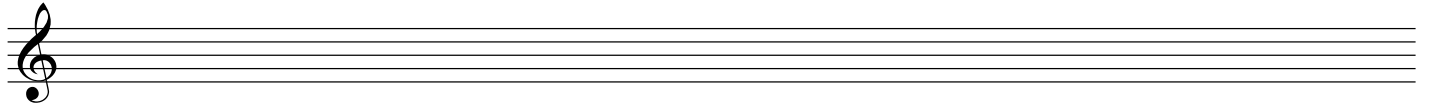
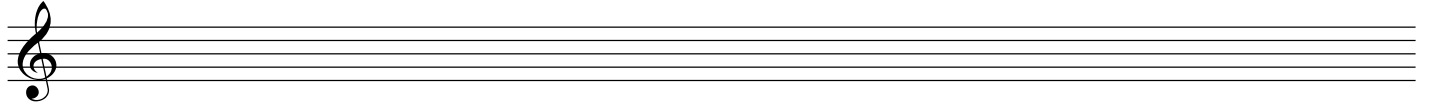


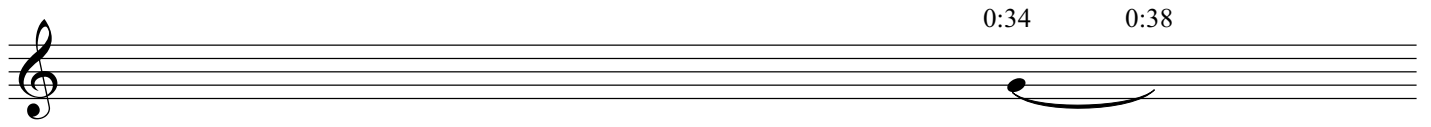
A musical staff with a treble clef. A slur starts at the 0:10 mark and extends to the 0:48 mark. The time markers 0:10 and 0:48 are placed above the staff.





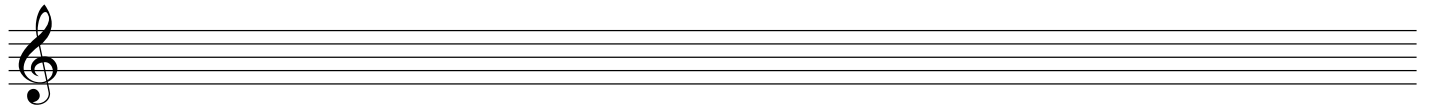




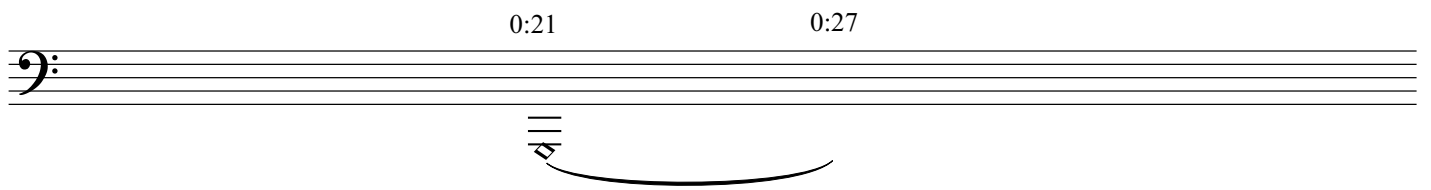


0:34 0:38

A musical staff with a treble clef. A single note is placed on the second line of the staff, with a slur underneath it. The time markers 0:34 and 0:38 are positioned above the staff.

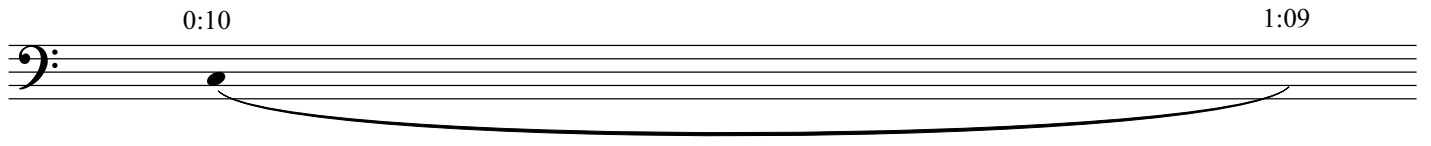


An empty musical staff with a treble clef.



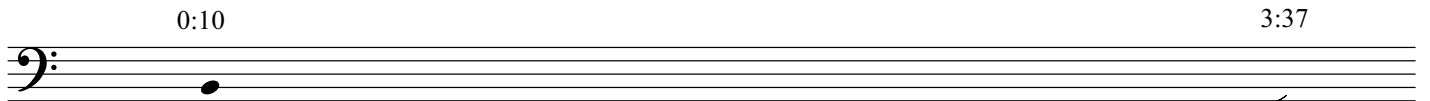
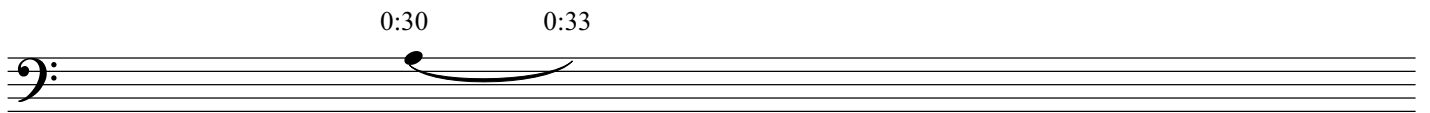
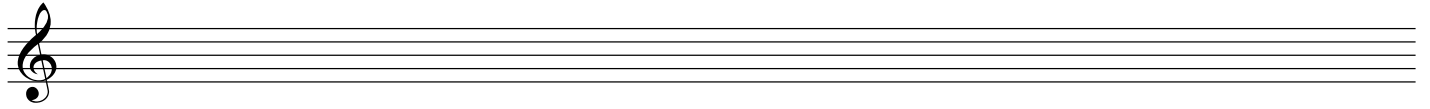
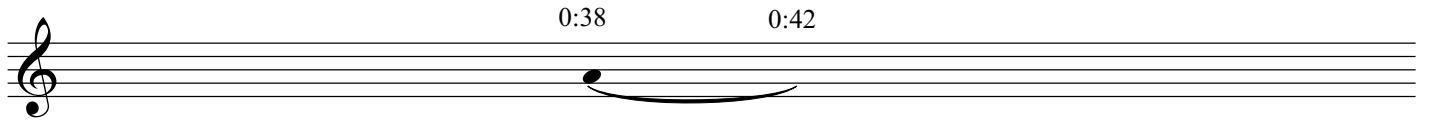
0:21 0:27

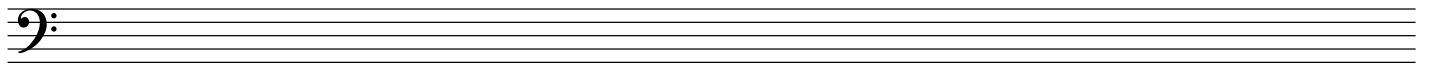
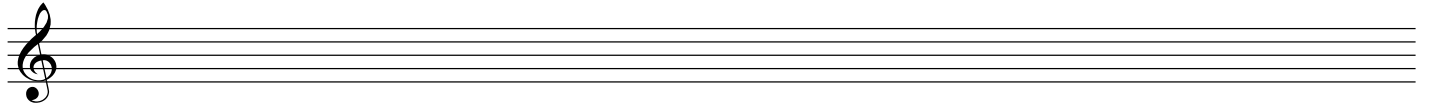
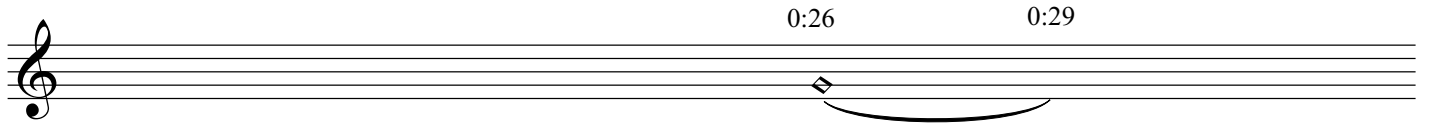
A musical staff with a bass clef. A single note is placed on the second line of the staff, with a slur underneath it. The time markers 0:21 and 0:27 are positioned above the staff.



0:10 1:09

A musical staff with a bass clef. A single note is placed on the second line of the staff, with a long slur underneath it that extends across the entire staff. The time markers 0:10 and 1:09 are positioned above the staff.





1:26 1:38

A musical staff with a treble clef. A slur is placed over the staff, starting at the time mark 1:26 and ending at 1:38. The slur is a simple curved line above the staff.

1:32 1:40

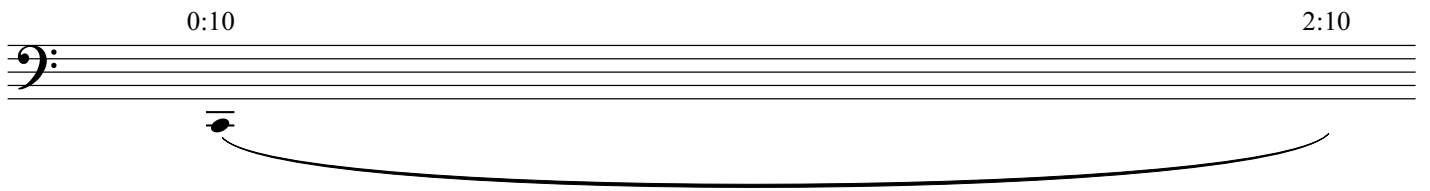
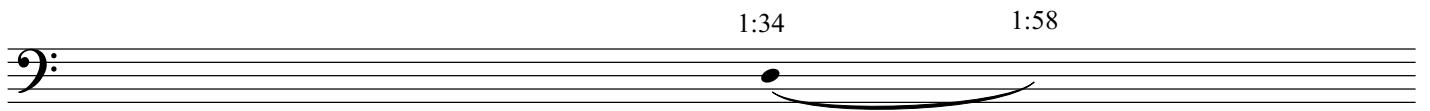
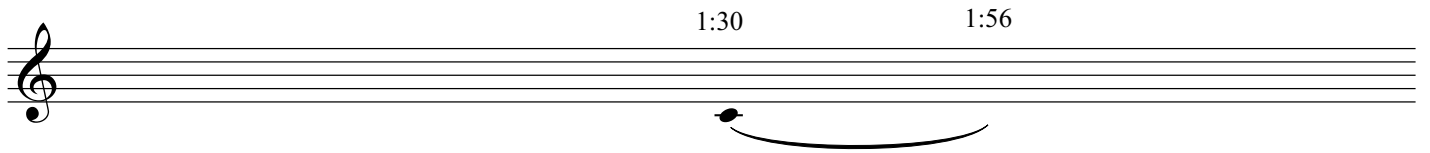
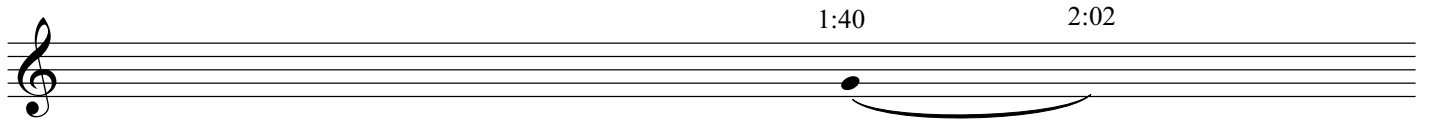
A musical staff with a treble clef. A slur is placed over the staff, starting at the time mark 1:32 and ending at 1:40. The slur is a simple curved line above the staff.

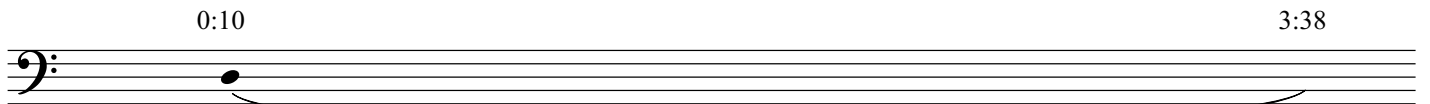
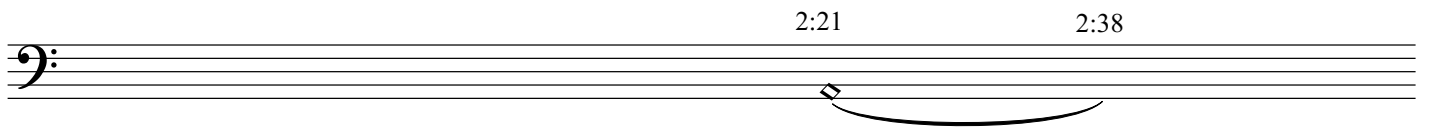
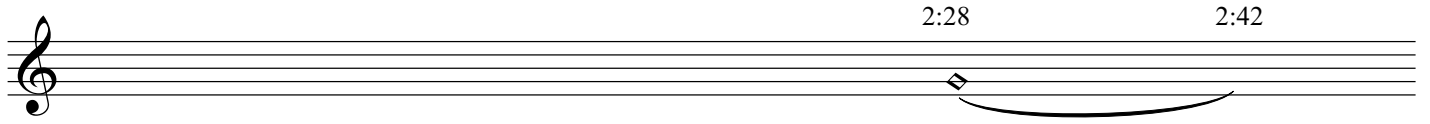
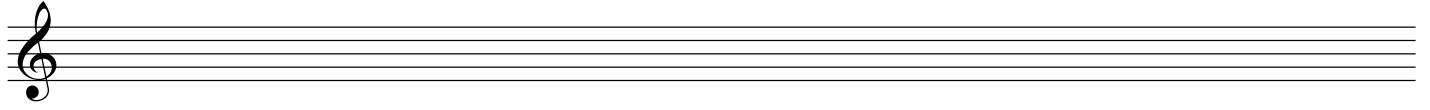
1:28 1:36

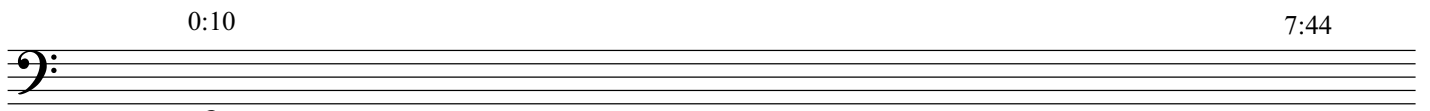
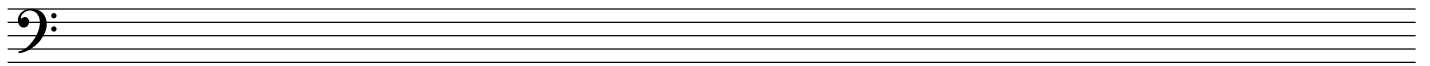
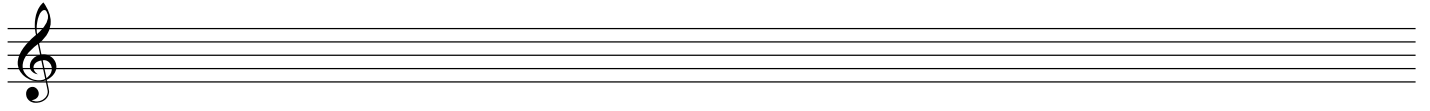
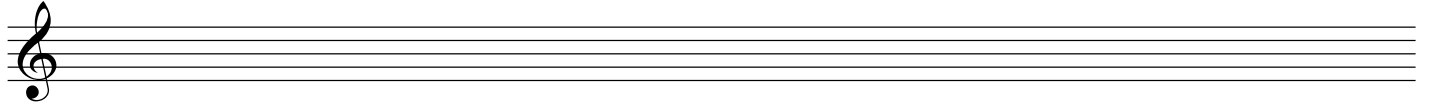
A musical staff with a bass clef. A slur is placed over the staff, starting at the time mark 1:28 and ending at 1:36. The slur is a simple curved line above the staff.

0:10 2:27

A musical staff with a bass clef. A long slur is placed over the staff, starting at the time mark 0:10 and ending at 2:27. The slur is a simple curved line above the staff.





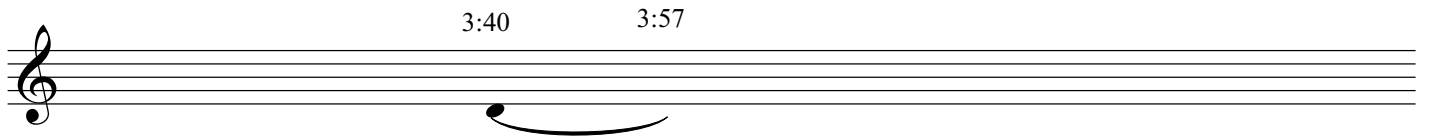


3:45 4:08



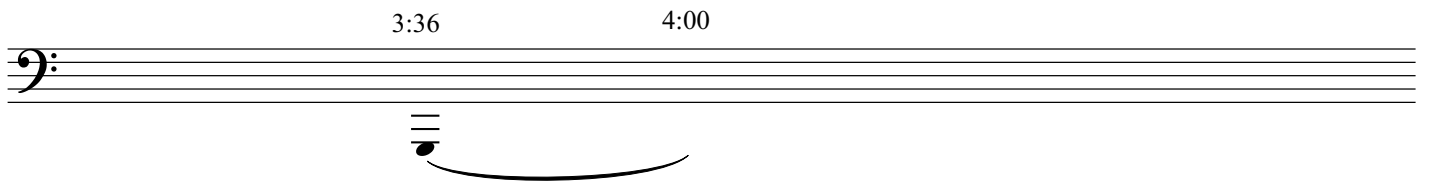
A musical staff with a treble clef. A single note is positioned on the second line of the staff, with a slur extending to the right. Above the staff, the time markers 3:45 and 4:08 are placed.

3:40 3:57



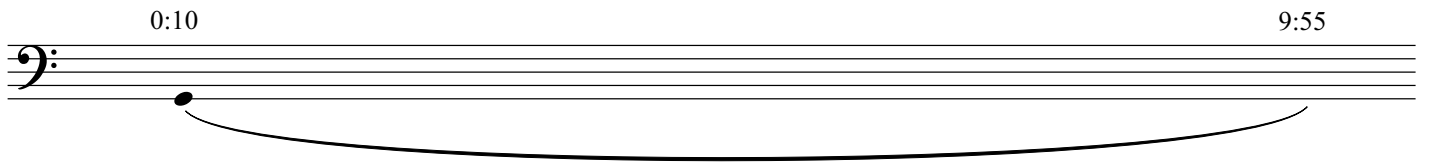
A musical staff with a treble clef. A single note is positioned on the second line of the staff, with a slur extending to the right. Above the staff, the time markers 3:40 and 3:57 are placed.

3:36 4:00



A musical staff with a bass clef. A single note is positioned on the second space of the staff, with a slur extending to the right. Above the staff, the time markers 3:36 and 4:00 are placed.

0:10 9:55



A musical staff with a bass clef. A single note is positioned on the second space of the staff, with a long slur extending across the entire width of the staff. Above the staff, the time markers 0:10 and 9:55 are placed.

