

verschwindungen VI

flute, clarinet, viola, violoncello, timpani

eva-maria houben

verschwindungen VI

flöte, klarinette, viola, violoncello und pauken

flute, clarinet, viola, cello, and timpani

eva-maria houben

2005

anton bruckner abgehört. / listening to anton bruckner.

jeder spieler spielt aus der partitur.

seiten auswählen und in freier reihenfolge spielen.

↓ : dies zeichen gibt an, welches instrument beginnt.

die gestrichelte linie bezeichnet den unmittelbaren anschluss einer stimme an eine andere: der zweite spieler knüpft an und führt weiter.

untereinander notierte klänge bzw. klangfolgen werden gleichzeitig gespielt, überlappen einander eine zeitlang.

ein bogen: eine ruhige ausatmung oder ein ruhiger bogenstrich. eher lang. (ein paukenwirbel entspricht in der dauer etwa einer ausatmung oder einem bogenstrich.)

insgesamt sehr frei im tempo.

- : ein eher kurzer klang.
- : ein eher längerer klang.

die klarinette ist klingend notiert.

each performer reads the score.

the performers choose pages and perform in free order.

↓ : this sign indicates which instrument begins.

the dotted line indicates the connection between one voice and another one: the second player continues.

notes, which appear one below the other, indicate simultaneity.

these sounds or groups of sounds overlap each other for a while.

a bow: one quiet breath or one quiet bow. rather long. (a roll maybe as long as a quiet breath or a quiet bow.)

● : a rather short sound.

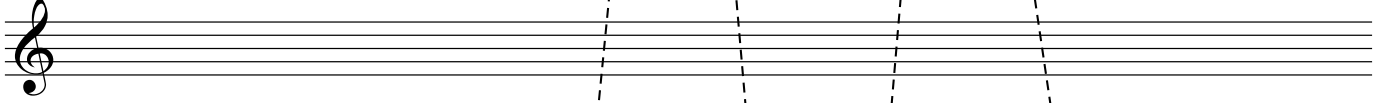
○ : a long(er) sound.

notation of the clarinet: sounding

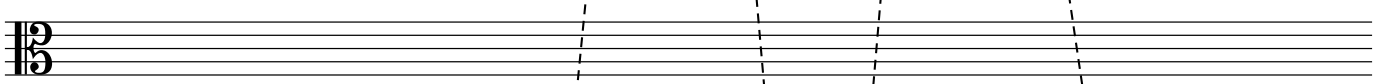
flute



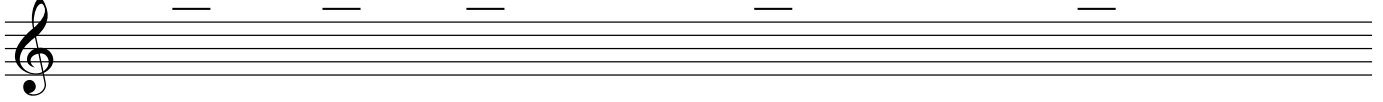
clarinet



viola

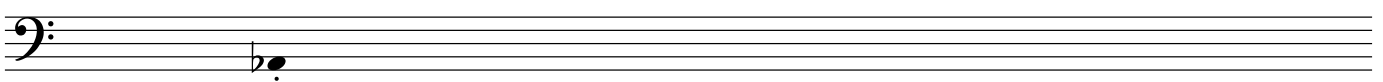


cello

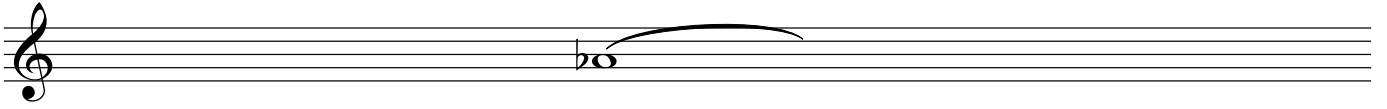


timpani

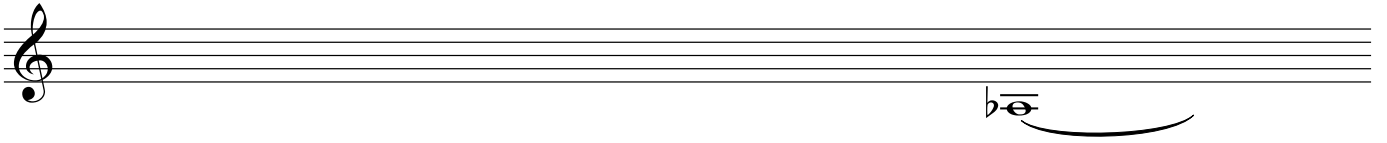
ab und zu. irgendwann / off and on. anytime



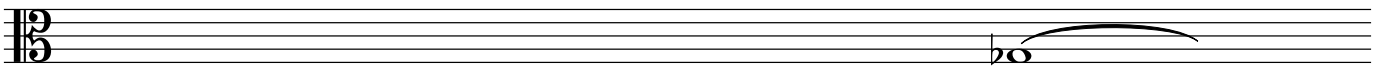
flute



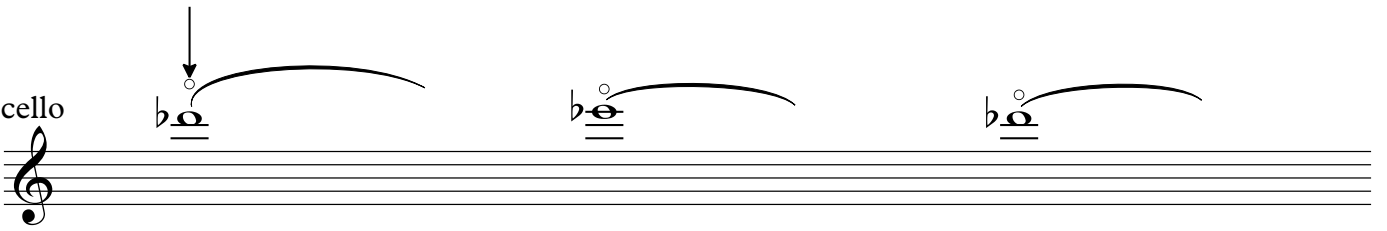
clarinet



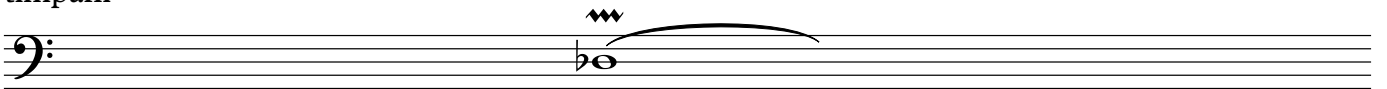
viola



cello



timpani



flute

A musical staff for flute in treble clef. It contains a sequence of eight eighth notes with stems pointing up. The notes are: B-flat, B-flat, B-flat, B-flat, B-flat, B-flat, B-flat, and B-flat. Each note has a flat sign and a stem with a flag.

clarinet

A musical staff for clarinet in treble clef. It contains a single eighth note with a stem pointing up, marked with a flat sign. A slur extends from the note to the right across the staff.

viola

A musical staff for viola in alto clef. It contains a single eighth note with a stem pointing up, marked with a flat sign. A slur extends from the note to the right across the staff.

cello

A musical staff for cello in bass clef. It contains two eighth notes with stems pointing up, both marked with a flat sign and a trill symbol (*tr*). A slur connects the two notes.

timpani

A musical staff for timpani in bass clef. It contains a single eighth note with a stem pointing up, marked with a flat sign. A slur extends from the note to the right across the staff.

flute

A musical staff for flute in treble clef. It contains five eighth notes, all beamed together, located in the second half of the staff.

clarinet

A musical staff for clarinet in treble clef. It features a half note with a flat (Bb) in the second half of the staff, followed by a dashed line extending to the right.

viola

A musical staff for viola in alto clef. It contains three half notes, all beamed together, located in the second half of the staff. An arrow points down to the first note.

cello

A musical staff for cello in treble clef. It features a half note with a flat (Bb) in the second half of the staff, with a fermata above it.

timpani

A musical staff for timpani in bass clef. It features a half note with a flat (Bb) in the second half of the staff, with a fermata above it.

flute

A musical staff for flute in treble clef. It contains two groups of notes. The first group consists of three eighth notes: B-flat, A-flat, and G-flat. The second group consists of three eighth notes: F-flat, E-flat, and D-flat.

clarinet

A musical staff for clarinet in treble clef. It contains a single whole note with a slur above it, positioned in the middle of the staff.

viola

A musical staff for viola in alto clef. It contains a single whole note with a slur above it, positioned in the middle of the staff.

cello

An empty musical staff for cello in bass clef.

timpani

A musical staff for timpani in bass clef. It contains a single whole note on the first line of the staff. An upward-pointing arrow is located below the note. A slur is drawn above the note, extending across the staff.

flute

A musical staff for flute in treble clef. It contains six quarter notes on the same pitch, each with a tie above it. Dashed lines connect the notes in pairs, indicating a sequence of sixteenth notes.

clarinet

A musical staff for clarinet in treble clef. It contains two quarter notes on the same pitch, each with a flat and a tie below it. Dashed lines connect the notes in pairs, indicating a sequence of sixteenth notes.

viola

A musical staff for viola in alto clef. It contains a whole rest.

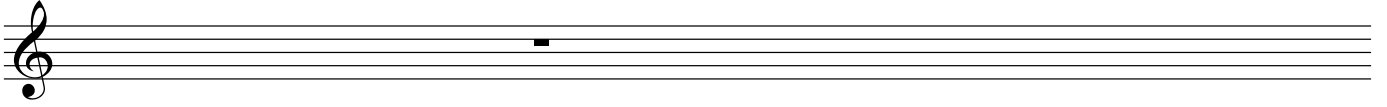
cello

A musical staff for cello in bass clef. It contains two notes: a quarter note with a flat and a tie below it, and a half note with a flat and a tie above it. An upward-pointing arrow is positioned below the first note.

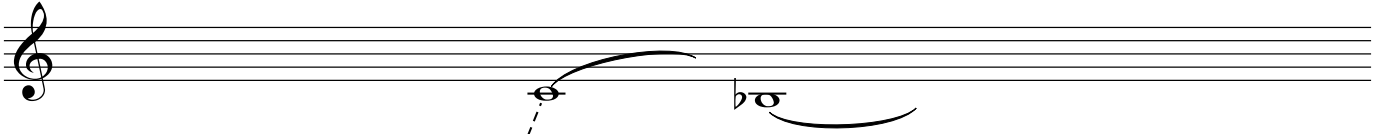
timpani

A musical staff for timpani in bass clef. It contains two notes: a quarter note with a flat and a tie below it, and a half note with a flat and a tie above it. A wavy line is positioned above the second note.

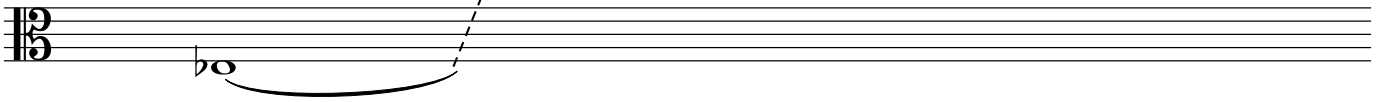
flute



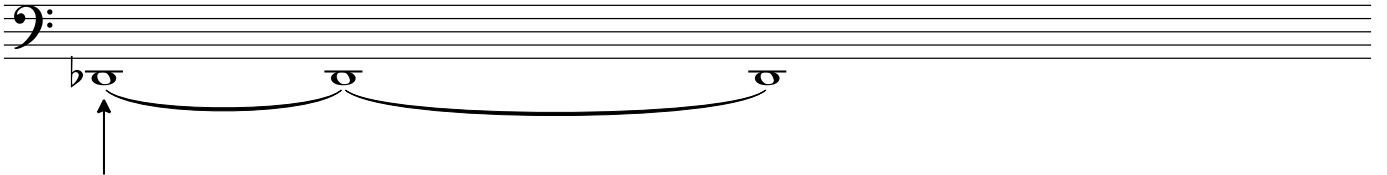
clarinet



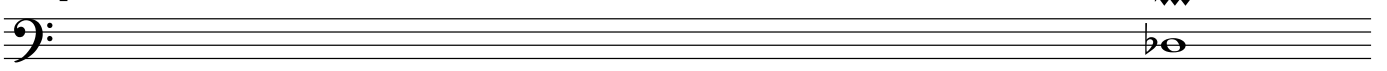
viola



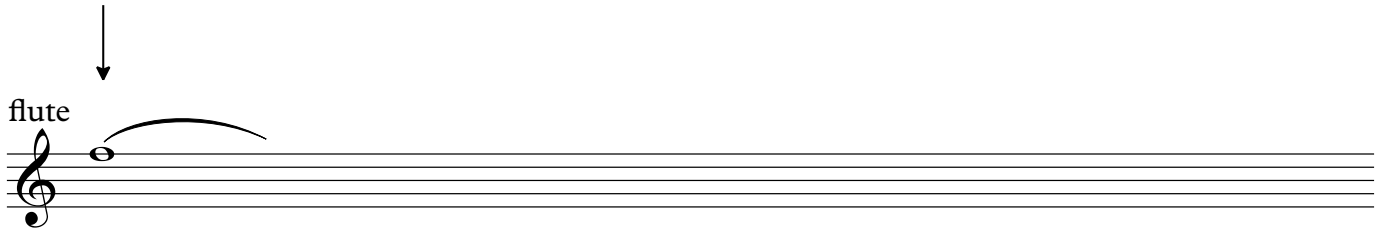
cello



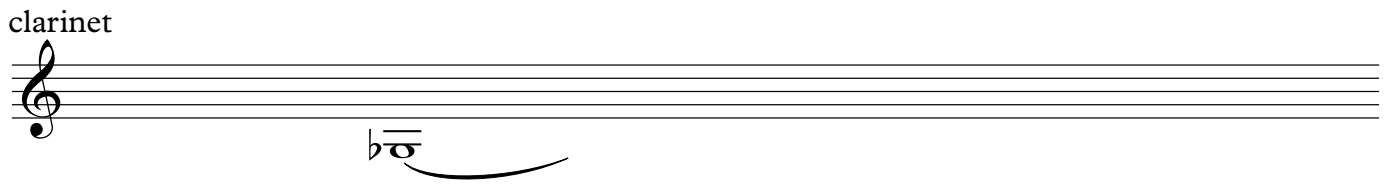
timpani



flute



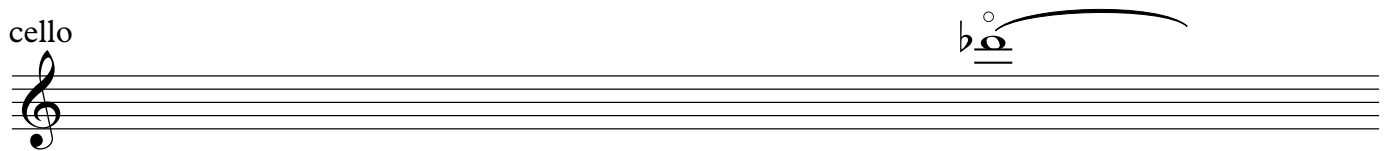
clarinet



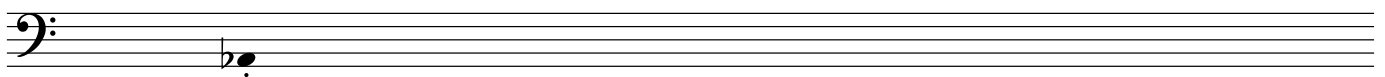
viola



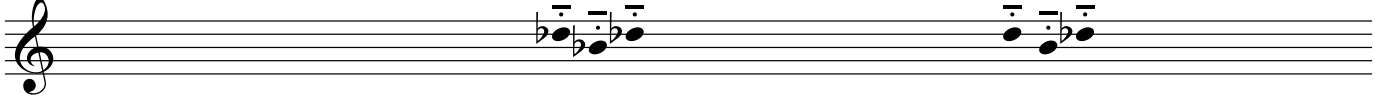
cello



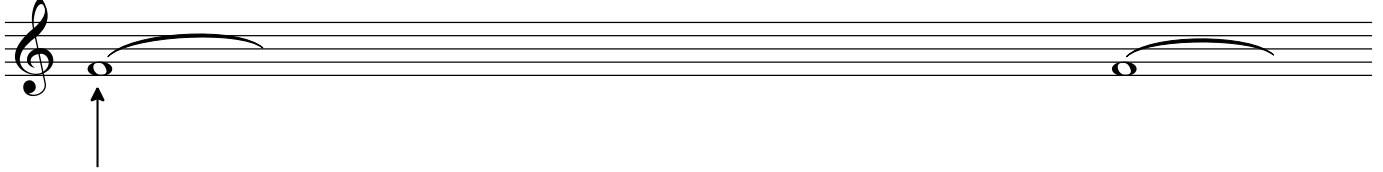
timpani ab und zu. irgendwann. / off and on. anytime



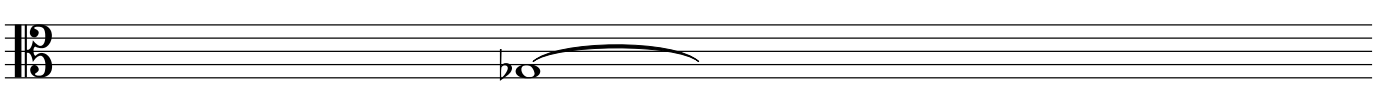
flute



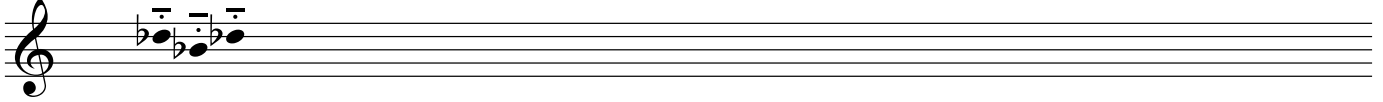
clarinet



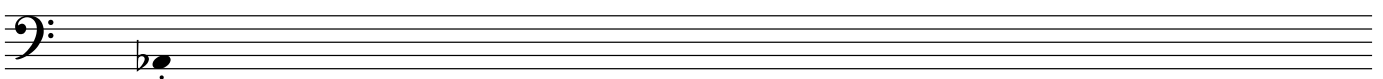
viola



cello



timpani ab und zu. irgendwann. / off and on. anytime.



flute

clarinet

viola

cello

timpani

flute

clarinet

viola

cello

timpani

The image shows a musical score for five instruments: flute, clarinet, viola, cello, and timpani. The flute part begins with a downward-pointing arrow above the first note, which is a quarter note with a flat and a fermata. This note is followed by two more quarter notes with flats and fermatas. A dashed line connects the end of the flute's first phrase to the start of the clarinet's part, which consists of two quarter notes with flats and fermatas. Another dashed line connects the end of the clarinet's part to the start of the viola's part, which is a single quarter note with a flat and a fermata. The cello part features a single quarter note with a flat and a fermata. The timpani part is represented by a single short horizontal line on the staff.