

some tunes vol. II

1 performer

eva-maria houben

some tunes
vol. II
for one performer

eva-maria houben
2006

ein tune pro seite.

alle klänge sind leise.

ein ruhiges allabreve-tempo.

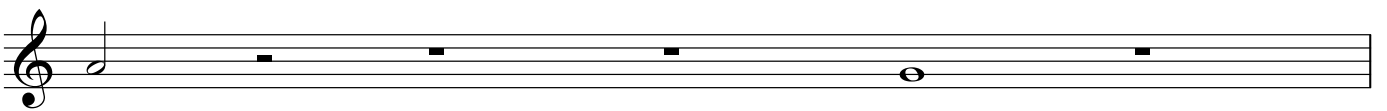
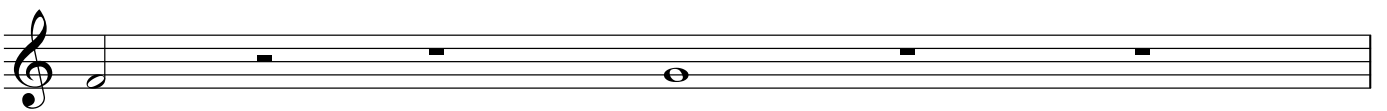
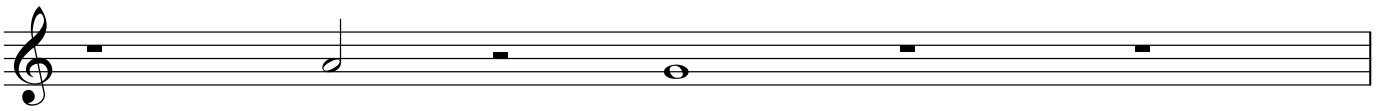
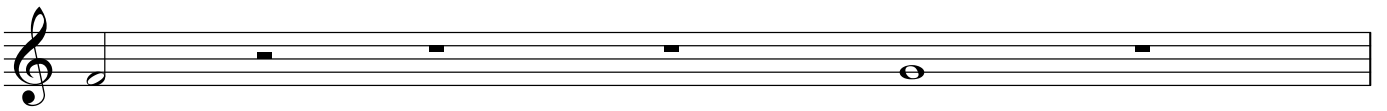
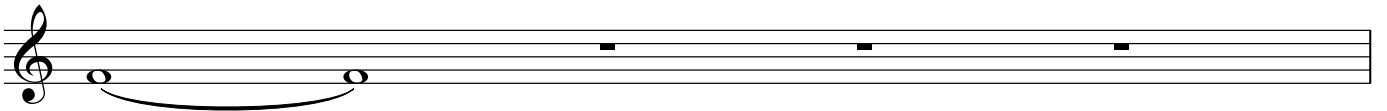
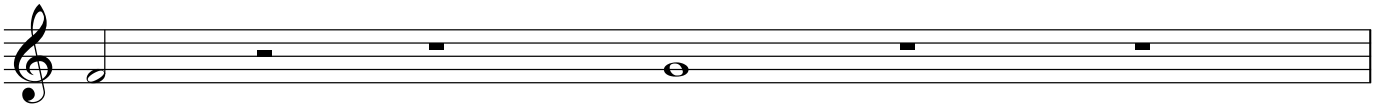
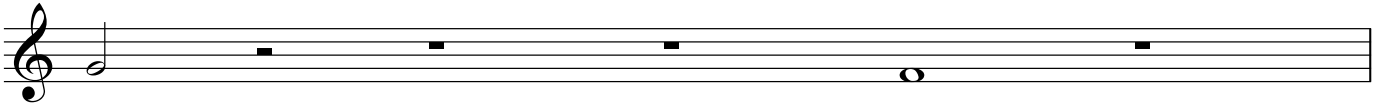
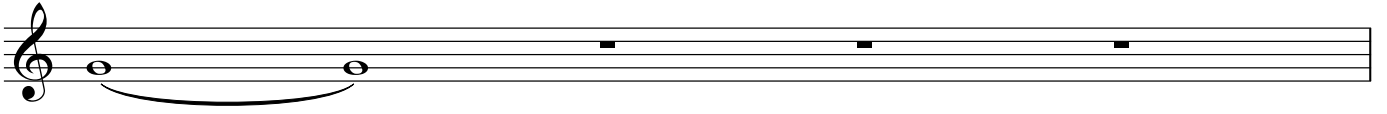
der ausführende legt pro tune die oktavlage fest.

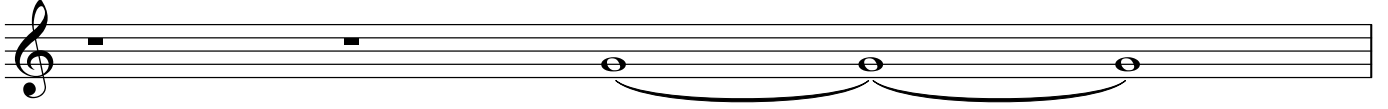
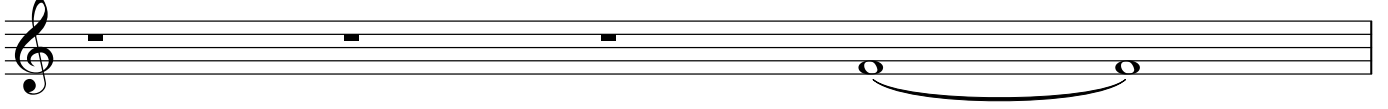
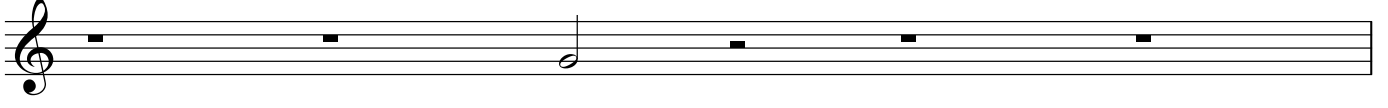
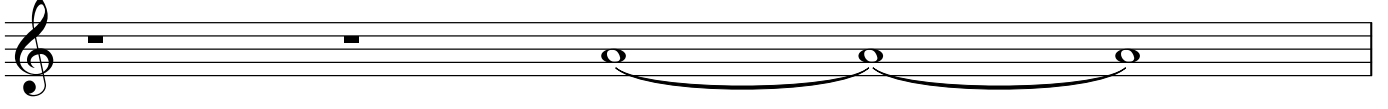
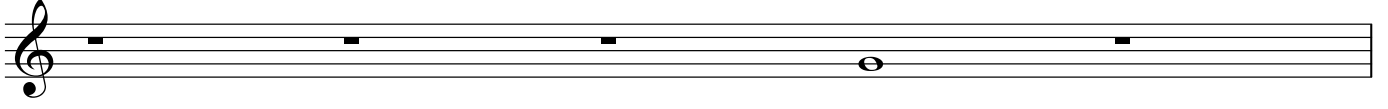
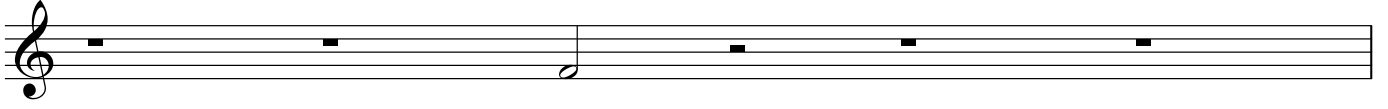
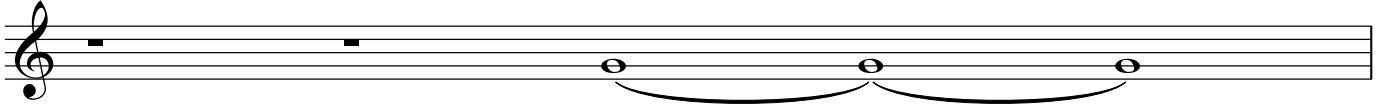
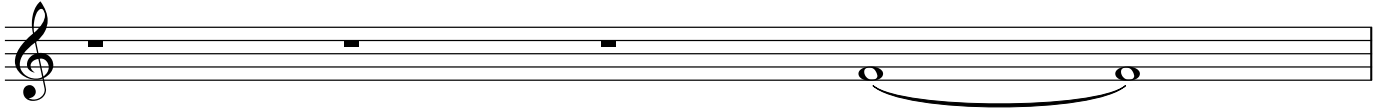
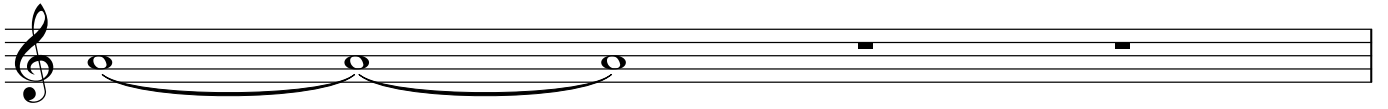
one tune per page.

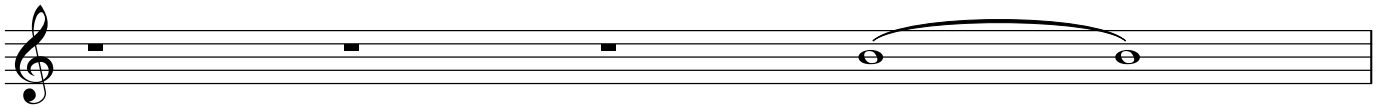
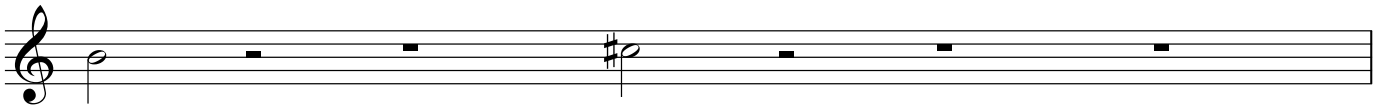
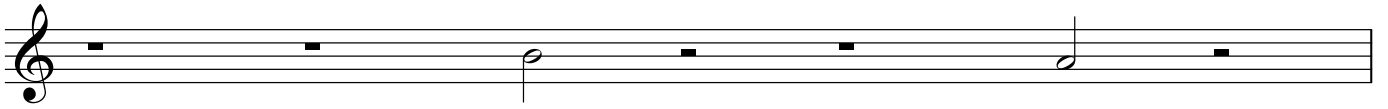
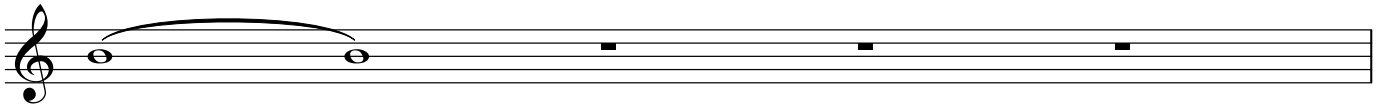
all sounds are soft.

a quiet, calm "alla breve"-tempo.

the performer chooses the register per tune.







The image displays a page of musical notation, numbered '4' at the top center. It consists of 14 horizontal staves, each beginning with a treble clef. The notation is as follows:

- Staff 1: A quarter rest, followed by five quarter notes on the same pitch.
- Staff 2: A quarter rest, followed by five quarter notes on the same pitch.
- Staff 3: A quarter note, a quarter note, a half note, and two quarter notes.
- Staff 4: A quarter note, a quarter note, and five quarter notes.
- Staff 5: A quarter note, a quarter note, and three quarter notes.
- Staff 6: A quarter note, followed by five quarter notes.
- Staff 7: A half note, followed by a half note, and three quarter notes.
- Staff 8: A half note, followed by five quarter notes.
- Staff 9: A quarter note, followed by five quarter notes.
- Staff 10: A quarter note, a quarter note, and five quarter notes.
- Staff 11: A half note, followed by a half note, and three quarter notes.
- Staff 12: A half note, followed by five quarter notes.
- Staff 13: A half note, followed by five quarter notes.
- Staff 14: A quarter note, a quarter note, a half note, and three quarter notes.

