

archipelagos

double bass

eva-maria houben

© edition wandelweiser **2006**

catalogue number ew16.085

archipelagos

5 saiten

für eberhard maldfeld.



alle oder einige seiten in freier reihenfolge spielen.





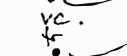
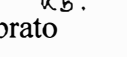
insgesamt eher leise.

zwischen den klängen bzw. klangfolgen auf einem bogenstrich (siehe erläuterungen) immer zeit zum atmen lassen (dauer variabel).

alle bogenstriche ruhig und weit ausschwingend.

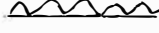

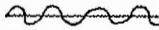
sich insgesamt viel zeit lassen.

- ————— : ein sehr langer klang (30 bis 60 sekunden), nahezu unmerkliche bogenwechsel.
 -  : ein klang auf einem ruhigen bogenstrich.
 -  : mehrere klänge, etwa gleichmäßig auf einen ruhigen bogenstrich verteilt.
- eine vorzeichnung gilt für alle der vorzeichnung folgenden klänge unter dem bogen.

- sp : sul ponticello
- ord.  : tremolo mit der bogenspitze (dauer: wie ein bogenstrich).
- tr.  : tremolo bei mittlerer bogenposition (dauer: wie oben).
- tr.  : halbtotriller.
- tr.  : halbtotriller schnell (violine).
- tr.  : halbtotriller mittlere geschwindigkeit (violoncello).
- tr.  : halbtotriller langsam (kontrabass).

vibrato

drei arten:

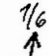
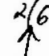

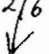
-  : oberhalb des grundtons.
-  : unterhalb des grundtons.
-  : ober- und unterhalb des grundtons, diesen umspielend.

drei schnelligkeiten:

- vl. : schnelles geigenvibrato.
- vc. : mittleres cellovibrato.
- kb. : langsames bassvibrato.

zwei weiten:

- $\frac{1}{4}$: vierteltonvibrato.
- $\frac{1}{8}$: achteltonvibrato.

- $\frac{1}{6}$  : erhöhung eines tons um einen sechstelton.
- $\frac{2}{6}$  : erhöhung um zwei sechsteltöne.
- $\frac{1}{6}$  : erniedrigung um einen sechstelton.
- $\frac{2}{6}$  : erniedrigung um zwei sechsteltöne.

archipelagos

5 string

for eberhard maldfeld.

play all pages of the score or some of them in free order.

play softly.

much time to breathe.

all bows are very calm and quiet.

all the time of the world.

play all bows quietly and as a gentle bow – without
hurry.

— : a very long sound. change of the bow nearly inaudible.

• — : one sound – one quiet bow.

• — : several sounds – one quiet bow. one accidental applies for all sounds on this bow.

Sp : sul ponticello.

tr : tremolo with the top of the bow (duration: like one quiet bow).

ord. tr : tremolo with ord. bow (middle of the bow) (duration: like one quiet bow).

tr : quaver – half a tone.

tr : quick (like a violin).

tr vl. : slower (like a cello).

tr vc. : slow (double bass).

tr kb.

vibrato

three types of vibrato:

— : above the keynote.

— : below the keynote.

— : above and below the keynote.

three tempi of vibrato:

vl. : quick (like a violin).

vc. : slow (like a cello).

kb: : very slow (double bass).

two amplitudes:

$\frac{1}{4}$: quarter tone.

$\frac{1}{8}$: eighth part tone.

$\frac{1}{6}$ ↑ : one sixth part higher.

$\frac{2}{6}$ ↑ : two sixth part higher.

$\frac{1}{6}$ ↓ : one sixth part lower.

$\frac{2}{6}$ ↓ : two sixth part lower.

tr
vl.
 $\frac{1}{4}$ Kb.
vl.

$\frac{1}{4}$ Kb.
 $\frac{1}{4}$ vl.

$\frac{1}{4}$ vl.
tr
vc.
vl.

senza vib.

$\frac{1}{8}$ rl.

$\frac{1}{8}$ rl.

$\frac{1}{6}$ $\frac{2}{6}$

$\frac{1}{6}$ $\frac{2}{6}$ $\frac{1}{6}$

$\frac{1}{6}$ $\frac{2}{6}$

senza vib.



senza vib.

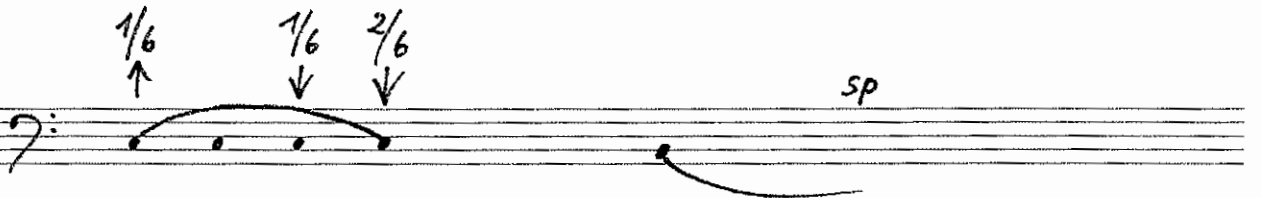
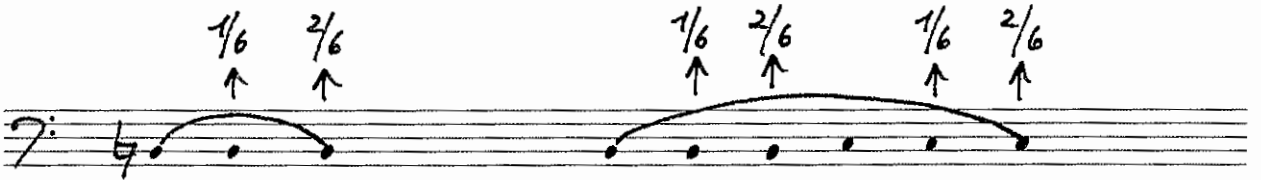
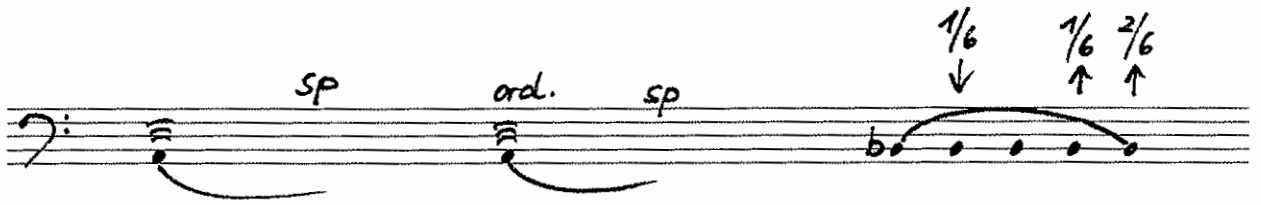
tr



tr

$\frac{1}{4}$ Kb.





Handwritten musical notation on a single staff. It begins with a bass clef and a colon. The first measure contains a whole note with a slur underneath. The second measure contains a half note with a flat sign (b) and a slur underneath. Above this measure is a wavy line with the fraction $\frac{1}{4}$ and the text "Kb." below it. The third measure contains a half note with a flat sign (b) and a slur underneath. Above this measure is another wavy line with the fraction $\frac{1}{4}$ and the text "Kb." below it.

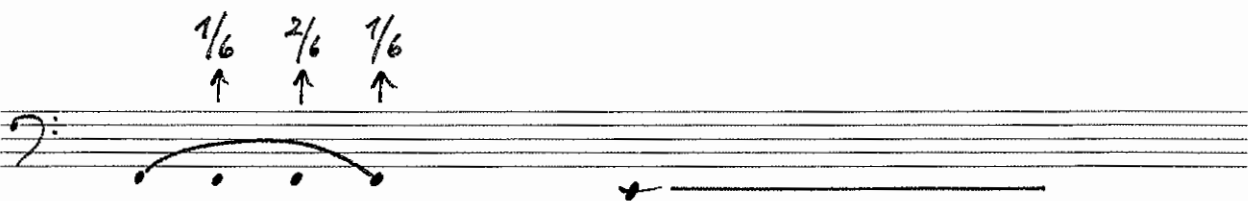
Handwritten musical notation on a single staff. It begins with a bass clef and a colon. The first measure contains a half note with a slur above it. Above the slur are two eighth notes with upward arrows: the first is labeled $\frac{1}{6}$ and the second is labeled $\frac{2}{6}$. The second measure contains a quarter note with a sharp sign (#) and a downward arrow labeled $\frac{1}{6}$. The third measure contains a half note with a slur above it. Above the slur are three eighth notes with downward arrows: the first is labeled $\frac{1}{6}$, the second is labeled $\frac{2}{6}$, and the third is labeled $\frac{1}{6}$.

Handwritten musical notation on a single staff. It begins with a bass clef and a colon. The first measure contains a half note with a slur above it. Above the slur are two eighth notes with downward arrows: the first is labeled $\frac{1}{6}$ and the second is labeled $\frac{2}{6}$. The second measure contains a quarter note with a sharp sign (#). The rest of the staff is empty, with two horizontal lines drawn below the staff line.

$\frac{1}{8}$ wavy kb.

$\frac{1}{4}$ wavy kb.

$\frac{1}{8}$ wavy kb.



ord.

$\frac{1}{4}$ vl. senza vib.

$\frac{1}{4}$ ~~~~~ kb.

$\frac{1}{4}$ ~~~~~ kb.

tr

Handwritten musical notation on a five-line staff with a bass clef. It features three notes on the second line, each with a horizontal slur underneath. Above the first and second notes is a wavy line and the text "1/4 kb.". Above the third note is the text "tr". Below the third note is the text "kb.".

tr

Handwritten musical notation on a five-line staff with a bass clef. It features two notes on the second line, each with a horizontal slur underneath. Below the first note is the text "kb.".

$\frac{1}{4}$ ~~~~~ kb.

Handwritten musical notation on a five-line staff with a bass clef. It features two notes on the second line, each with a horizontal slur underneath. The second note has a double underline below it.

tr

rc.

senza vib.

tr

2/6 1/6

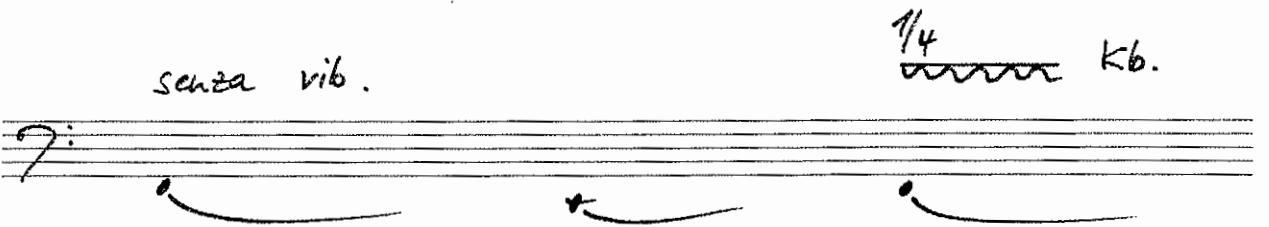
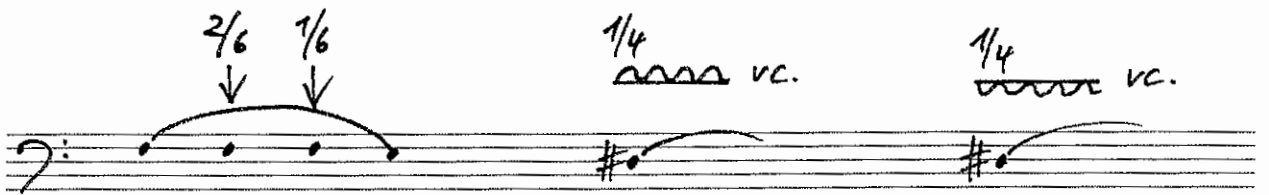
↓ ↓

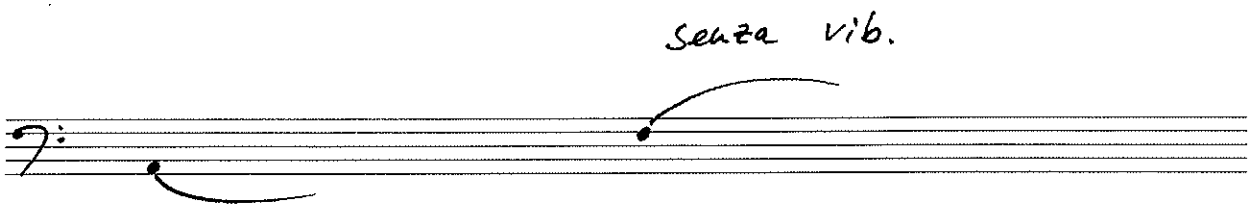
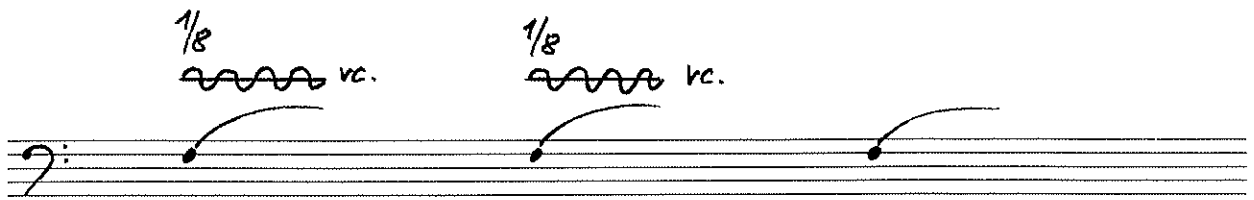
kb.

2/6 1/6 2/6 1/6

↑ ↑ ↑ ↑

senza vib.





$\frac{1}{6}$ $\frac{2}{6}$ $\frac{1}{6}$ $\frac{1}{6}$ $\frac{2}{6}$
 ↑ ↑ ↑ ↓ ↓

$\frac{1}{6}$ $\frac{2}{6}$ $\frac{1}{6}$ $\frac{1}{4}$ Kb. $\frac{1}{4}$ vl.

↓ ↓ ↑

$\frac{1}{8}$ vc. $\frac{1}{4}$ kb.

Handwritten musical notation on a five-line staff with a bass clef. It features three measures. The first measure has a flat sign (b) and a slur over a note with "tr" above and "rc." below. The second measure has a flat sign (b), a slur over a note with "ord." above, and "sp" above the slur. The third measure has a flat sign (b), a slur over a note with "tr" above and "vl." below.

Handwritten musical notation on a five-line staff with a bass clef. It features three measures. The first measure has a flat sign (b) and a slur over four notes with rhythmic markings $\frac{1}{6}$, $\frac{2}{6}$, and $\frac{1}{6}$ above. The second measure has a flat sign (b) and a slur over two notes with rhythmic markings $\frac{1}{6}$ and $\frac{2}{6}$ above. The third measure has a flat sign (b) and a slur over four notes with rhythmic markings $\frac{1}{6}$ and $\frac{1}{6}$ above.

Handwritten musical notation on a five-line staff with a bass clef. It features three measures. The first measure has a flat sign (b) and a slur over a note with "ord." above. The second measure has a flat sign (b), a slur over a note with "tr" above, and "kb." below. The third measure has a flat sign (b) and a slur over a note.

$\frac{2}{6}$ $\frac{1}{6}$ $\frac{2}{6}$ $\frac{1}{6}$ $\frac{1}{6}$ $\frac{1}{6}$ $\frac{2}{6}$ $\frac{1}{6}$ $\frac{1}{6}$ $\frac{2}{6}$ $\frac{1}{6}$
 ↑ ↑ ↑ ↑ ↓ ↓ ↓ ↓ ↑ ↑ ↑

senza vib. $\frac{1}{8}$ *vl.*

$\frac{1}{8}$ *vc.* $\frac{1}{4}$ *kb.*

tr
F kb.

$\frac{1}{8}$ Kb. $\frac{1}{4}$ Kb.
F # F

$\frac{1}{6}$ ↑ $\frac{1}{6}$ ↓ $\frac{2}{6}$ ↓ $\frac{1}{6}$ ↓

SP

tr senza vib. $\frac{1}{4}$ Kb.

rc.

$\frac{1}{4}$ Kb.

tr
kb.

$\frac{1}{8}$ *trill* kb. $\frac{1}{8}$ *trill* vc. $\frac{1}{8}$ *trill* vl.

senza vib.

tr
vc.

Handwritten musical notation on a single staff. It begins with a bass clef and a flat key signature. The first measure contains a half note with a slur over it, with four eighth notes underneath. Above the notes are dynamic markings: $\frac{1}{6}$ (down), $\frac{2}{6}$ (down), $\frac{1}{6}$ (down), and $\frac{1}{6}$ (up). The second measure contains a half note with a slur over it, with four eighth notes underneath. Above the notes are dynamic markings: $\frac{1}{6}$ (up), $\frac{2}{6}$ (up), and $\frac{1}{6}$ (up).

Handwritten musical notation on a single staff. It begins with a bass clef and a flat key signature. The first measure contains a half note with a slur over it, with four eighth notes underneath. Above the notes are dynamic markings: $\frac{1}{6}$ (down), $\frac{1}{6}$ (up), $\frac{2}{6}$ (up), and $\frac{1}{6}$ (up). The second measure contains a half note with a slur over it, with four eighth notes underneath. Above the notes is a dynamic marking: $\frac{1}{8}$ vc.

Handwritten musical notation on a single staff. It begins with a bass clef and a flat key signature. The first measure contains a half note with a slur over it, with four eighth notes underneath. Above the notes is a dynamic marking: $\frac{1}{8}$ vl. The second measure contains a half note with a slur over it, with four eighth notes underneath. Above the notes is a dynamic marking: $\frac{1}{4}$ Kb. The third measure contains a half note with a slur over it, with four eighth notes underneath. Above the notes is a dynamic marking: tr. Below the staff, there is a dynamic marking: vc.

$\frac{1}{4}$ Kb. $\frac{1}{4}$ Kb.

b #b

tr tr

rc. rl.

$\frac{1}{8}$ rl. $\frac{1}{8}$ rc. $\frac{1}{8}$ Kb.

$\frac{1}{4}$ *kb.*

$\frac{1}{4}$ *kb.* $\frac{1}{4}$ *vl.* $\frac{1}{6}$ $\frac{2}{6}$ $\frac{1}{6}$ $\frac{2}{6}$

$\frac{1}{6}$ $\frac{2}{6}$ $\frac{1}{6}$ *senza vib.*

senza vib.
tr
tr
vl. *kb.*

$\frac{1}{8}$ *vc.* $\frac{1}{8}$ *kb.* $\frac{1}{4}$ *vc.*

tr
vc. $\frac{1}{4}$ *kb.*