

klang-landschaften

piano

eva-maria houben

klang-landschaften

für einen pianisten/eine pianistin

eva-maria houben

2008

for istván zelenka

in einer landschaft geht man spazieren.

„klang-landschaften“: man spaziert zwischen den klängen.

unangestrengt leise – durchweg zart und leicht.

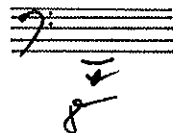
das rechte pedal bleibt während der aufführung niedergedrückt.

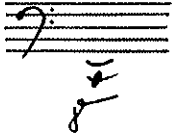
in a landscape you go for a walk.

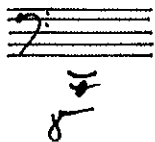
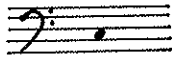
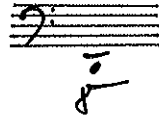
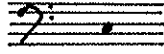
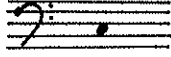
“landscapes of sounds”: you go for a walk between the sounds,
you walk from sound to sound.

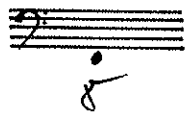
play softly and tenderly – without any effort.

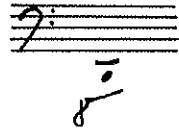
keep the right pedal down throughout.











Handwritten musical notation on a grand staff. The treble clef staff contains a chord with notes G4 and B4. The bass clef staff contains a chord with notes G3 and B3. A 'be' label is written between the staves.

Handwritten musical notation on a single staff with a bass clef. A 'be' label is written below the staff.

Handwritten musical notation on a single staff with a treble clef. A '15' label is written above the staff, and a 'be' label is written below it.

Handwritten musical notation on a grand staff. The treble clef staff contains a chord with notes G4 and B4. The bass clef staff contains a chord with notes G3 and B3. A 'be' label is written between the staves.

Handwritten musical notation on a single staff with a bass clef. A 'be' label is written below the staff.

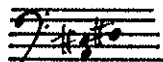
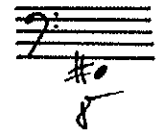
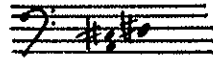
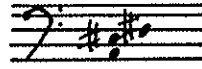
Handwritten musical notation on a single staff with a treble clef. A '15' label is written above the staff, and a 'be' label is written below it.

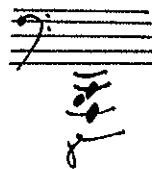
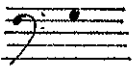
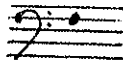
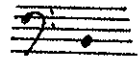
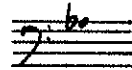
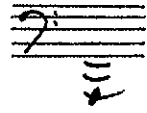
Handwritten musical notation on a single staff with a treble clef. A '15' label is written above the staff, and a 'be' label is written below it.

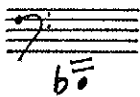
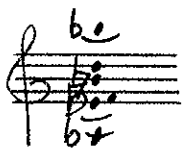
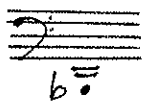
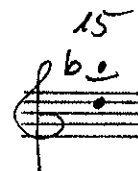
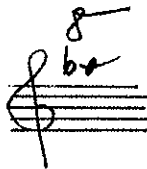
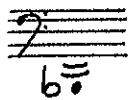
Handwritten musical notation on a single staff with a bass clef. A 'be' label is written below the staff.

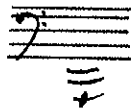
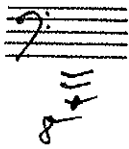
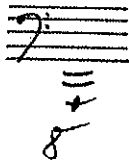
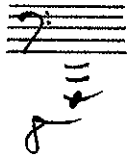
Handwritten musical notation on a single staff with a bass clef. A 'be' label is written below the staff.

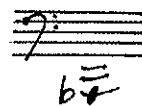
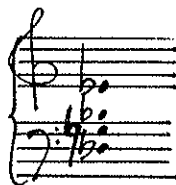
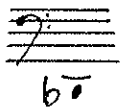
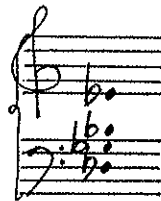
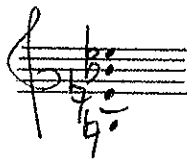
Handwritten musical notation on a single staff with a treble clef. A '15' label is written above the staff, and a 'be' label is written below it.

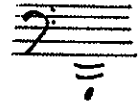


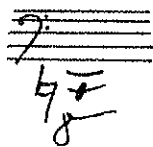
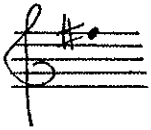
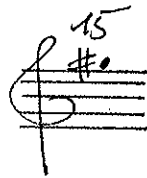
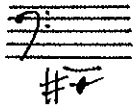


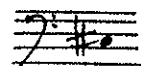
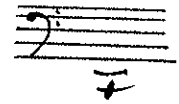
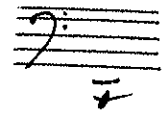
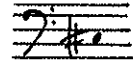


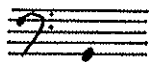
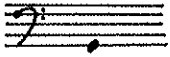
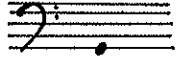


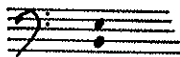
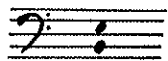


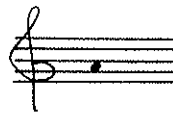
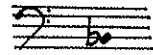
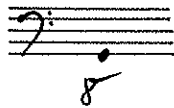
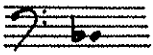


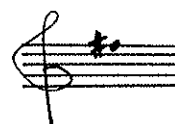
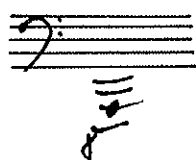
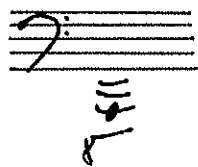




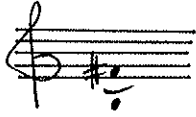
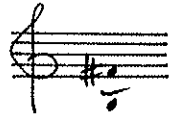


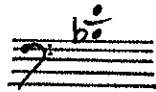
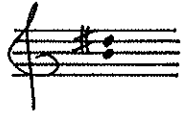
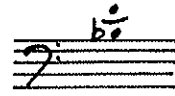


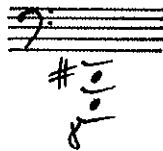
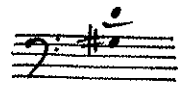
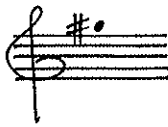
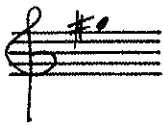
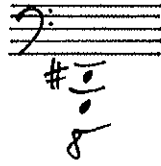
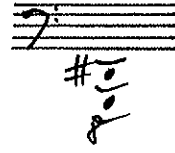


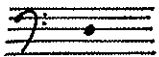
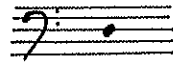
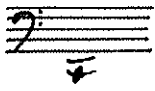
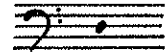


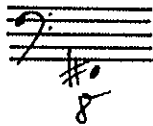
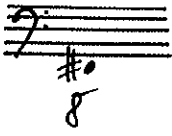
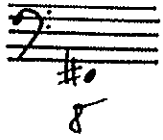


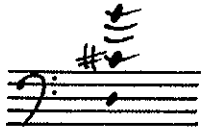


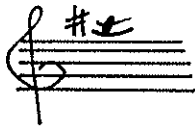
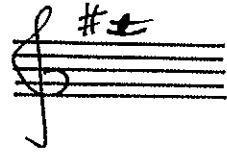


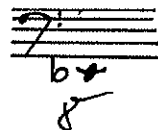
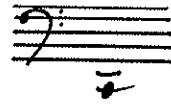
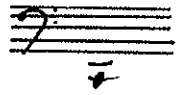


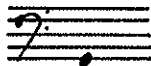
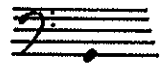
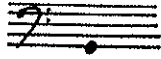
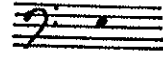
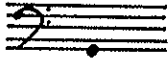


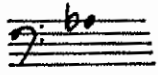




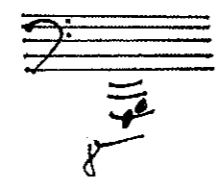
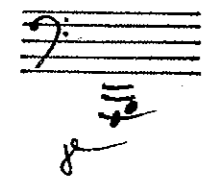
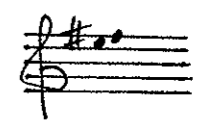
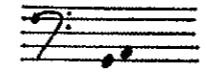




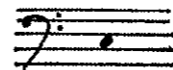
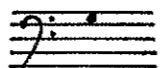
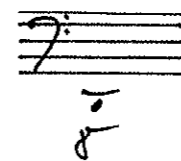
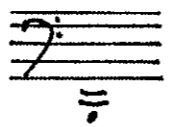
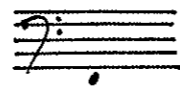


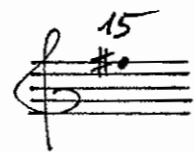
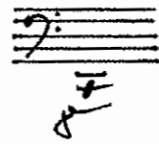
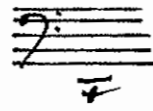


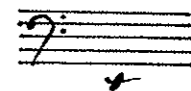
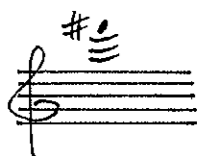
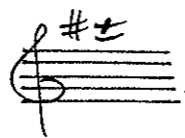
X

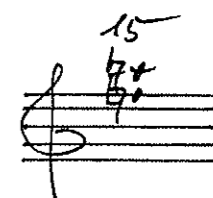
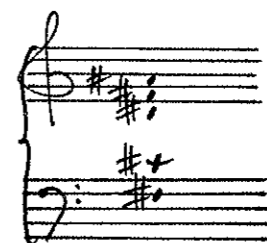
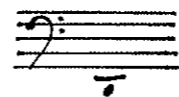
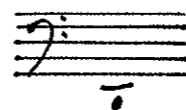
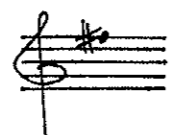
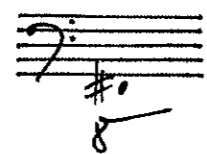
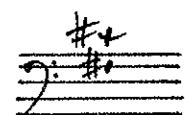
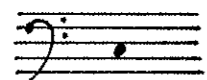


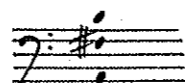
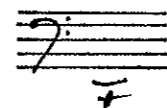
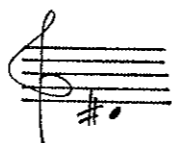
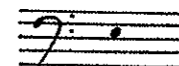
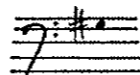
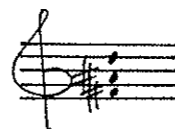
X

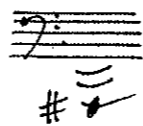
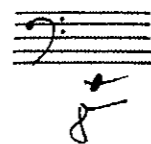
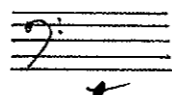
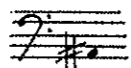
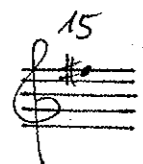
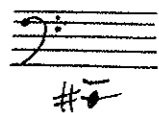
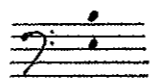
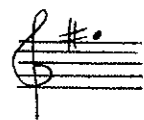
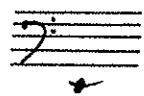
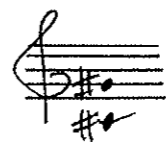
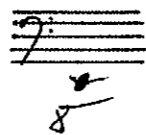


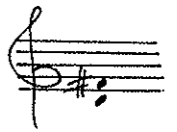
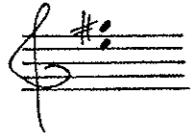
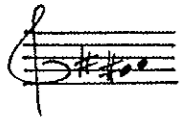
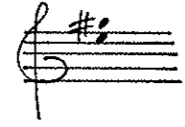












Handwritten musical notation on a grand staff. The treble clef contains a sharp sign (#) and a fermata symbol above it. The bass clef contains a sharp sign (#) and a fermata symbol above it. The notes are: treble clef (F#4, G#4, A4) and bass clef (F#3, G#3, A3).

Handwritten musical notation on a grand staff. The treble clef contains a sharp sign (#) and a fermata symbol above it. The bass clef contains a sharp sign (#) and a fermata symbol below it. The notes are: treble clef (F#4, G#4, A4) and bass clef (F#3, G#3, A3).

Handwritten musical notation on a grand staff. The treble clef contains a sharp sign (#) and a fermata symbol above it. The bass clef contains a sharp sign (#) and a fermata symbol above it. The notes are: treble clef (F#4, G#4, A4) and bass clef (F#3, G#3, A3).

Handwritten musical notation on a grand staff. The treble clef contains a sharp sign (#) and a fermata symbol above it. The bass clef contains a sharp sign (#) and a fermata symbol below it. The notes are: treble clef (F#4, G#4, A4) and bass clef (F#3, G#3, A3).

Handwritten musical notation on a grand staff. The treble clef contains a sharp sign (#) and a fermata symbol above it. The bass clef contains a sharp sign (#) and a fermata symbol above it. The notes are: treble clef (F#4, G#4, A4) and bass clef (F#3, G#3, A3).

Handwritten musical notation on a grand staff. The treble clef contains a sharp sign (#) and a fermata symbol above it. The bass clef contains a sharp sign (#) and a fermata symbol below it. The notes are: treble clef (F#4, G#4, A4) and bass clef (F#3, G#3, A3).

Handwritten musical notation on a grand staff. The key signature is one sharp (F#) and the time signature is common time (C). The treble and bass clefs both contain a triad of notes: F#4, A4, and C5. Below the staff, there is a handwritten annotation consisting of a sharp sign, a note, and a clef.

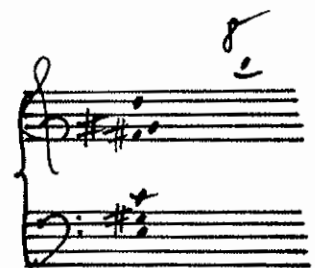
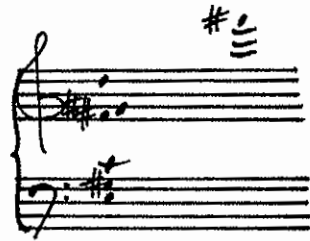
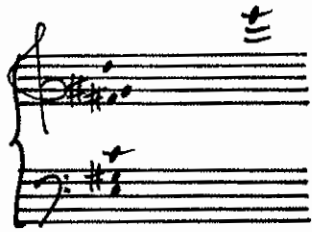
Handwritten musical notation on a grand staff. The key signature is one sharp (F#) and the time signature is common time (C). The treble and bass clefs both contain a triad of notes: F#4, A4, and C5. Above the treble clef, there is a handwritten annotation consisting of a sharp sign, a note, and a clef.

Handwritten musical notation on a grand staff. The key signature is one sharp (F#) and the time signature is common time (C). The treble and bass clefs both contain a triad of notes: F#4, A4, and C5. Below the bass clef, there is a handwritten annotation consisting of a sharp sign, a note, and a clef.


Handwritten musical notation on a grand staff. The key signature is one sharp (F#) and the time signature is common time (C). The treble and bass clefs both contain a triad of notes: F#4, A4, and C5. Above the treble clef, there is a handwritten annotation consisting of the number 15, a sharp sign, a note, and a clef.

Handwritten musical notation on a grand staff. The key signature is one sharp (F#) and the time signature is common time (C). The treble and bass clefs both contain a triad of notes: F#4, A4, and C5. Below the bass clef, there is a handwritten annotation consisting of a sharp sign, a note, and a clef.

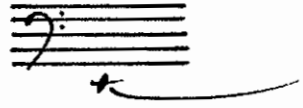
Handwritten musical notation on a grand staff. The key signature is one sharp (F#) and the time signature is common time (C). The treble and bass clefs both contain a triad of notes: F#4, A4, and C5. Above the treble clef, there is a handwritten annotation consisting of a sharp sign, a note, and a clef.



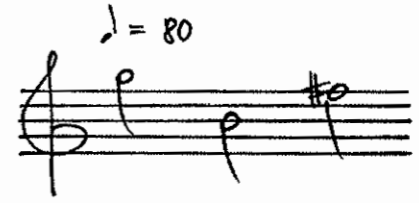
$\lambda = 20$



mute




$\lambda = 80$



pizz.

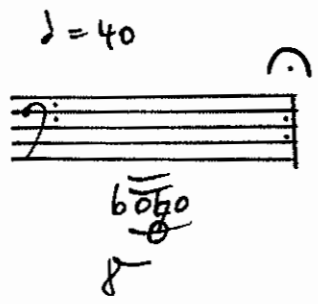


mute

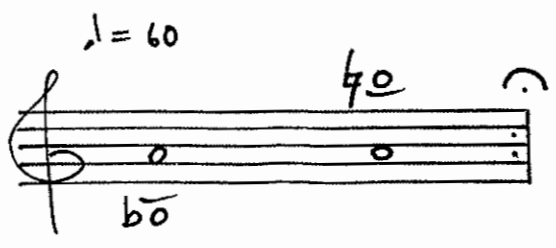


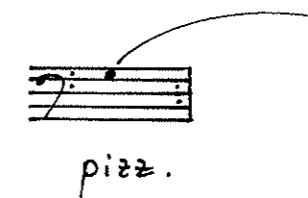
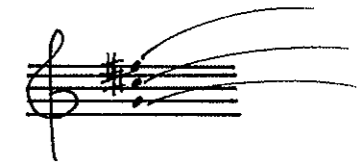
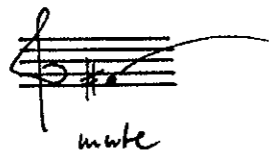
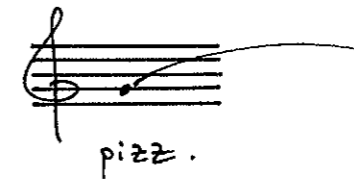
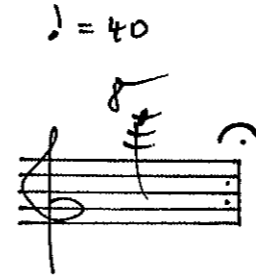
pizz.

$\lambda = 40$



$\lambda = 60$





$\text{♩} = 40$



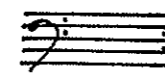
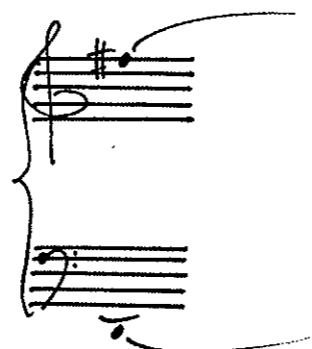
mute



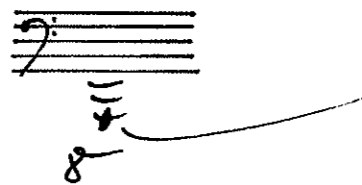
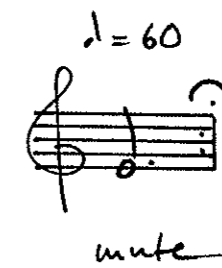
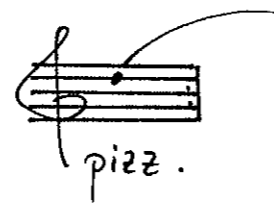
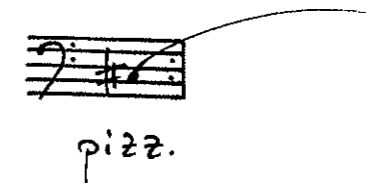
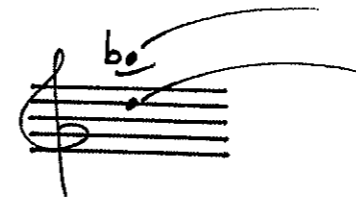
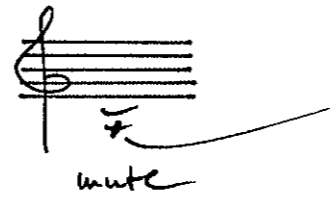
$\text{♩} = 40$



mute



mute



$\text{♩} = 60$

$\text{♩} = 60$

$\lambda = 40$

Handwritten musical notation for a piano piece. It consists of two staves. The top staff is in treble clef and contains two quarter notes: the first is G4 (middle C) and the second is A#4. The bottom staff is in bass clef and contains two quarter notes: the first is G3 and the second is A#3. A brace groups both staves.

$\lambda = 30$

Handwritten musical notation for a piano piece. It consists of a single staff in treble clef. It contains two quarter notes: the first is G4 and the second is A#4. A brace is under the second note.

Handwritten musical notation for a piano piece. It consists of a single staff in treble clef. It contains one quarter note, A#4. A slur is above the note, and the word "pizz." is written below the staff.

Handwritten musical notation for a piano piece. It consists of a single staff in bass clef. It contains one quarter note, A#3. A slur is above the note, and the word "mute" is written below the staff.

Handwritten musical notation for a piano piece. It consists of a single staff in treble clef. It contains one quarter note, G4. A slur is above the note, and the word "pizz." is written below the staff.

$\lambda = 40$

Handwritten musical notation for a piano piece. It consists of two staves. The top staff is in treble clef and contains two quarter notes: the first is G4 (labeled "8") and the second is A#4 (labeled "15"). The bottom staff is in bass clef and contains two quarter notes: the first is G3 (labeled "8") and the second is A#3 (labeled "15"). A brace groups both staves.

