

throng

2 instruments

eva-maria houben

© edition wandelweiser **2009**
catalogue number ew16.118

thongs

duo (var.)

eva-maria houben

2009

jeder klang (eines zweiklangs) kann in jede oktavlage
transponiert werden.

die intonation ist vielleicht auch unscharf; abweichungen und
schwankungen im achtel- bis vierteltonbereich sind nicht selten.
kein spieler sollte hervortreten.

jeder zweiklang und die ihm folgende atempause dauern
zusammen etwa zehn sekunden.

der letzte ton einer zeile ist mit fermate zu spielen: nach der
fermate ist die pause zwischen dieser zeile und der nächsten
länger als die pause zwischen zwei zweiklängen einer zeile.

irgendwo anfangen – irgendwo aufhören.

insgesamt leise.

sanft schwingend, zart schwebend.

each sound (of a 'duo'-sound) may be transposed in any octave.

the intonation may be somehow misty; some shadows and some differences in pitch concerning 1/8 oder even quarter-tones may appear.

no player should dominate.

one duo-sound and the following silence last together about ten seconds.


you play the last sound of a line with a fermata: the silence after the fermata is a longer one than the silence between two duo-sounds.


begin anywhere – finish anywhere.

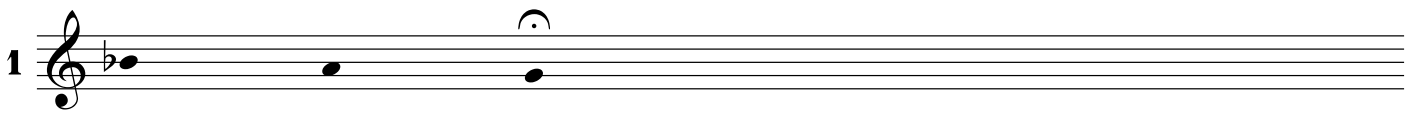
silent and calm.

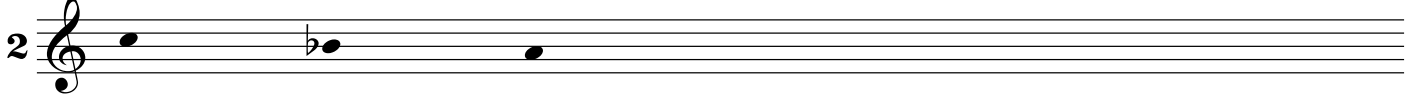
softly swinging.

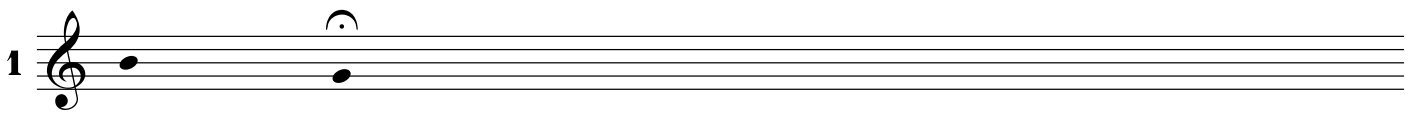
accidentals apply for each line.

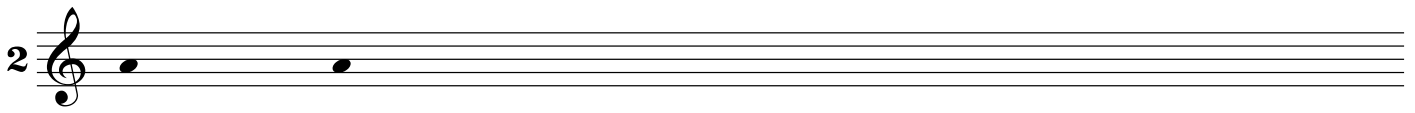
1 

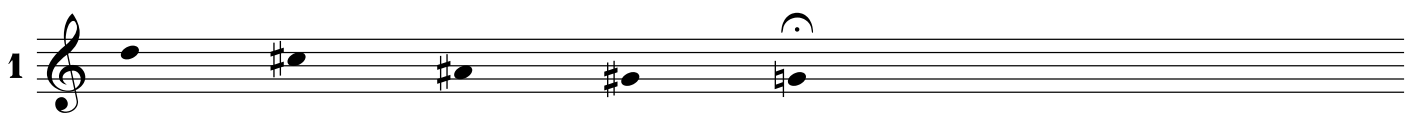
2 

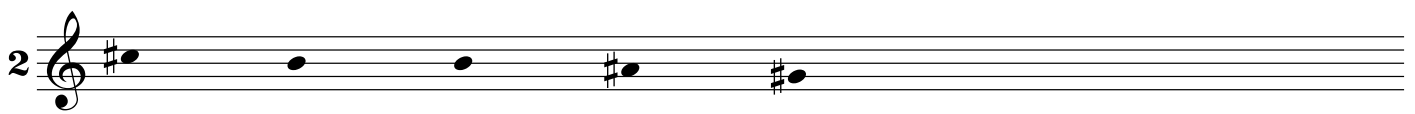
1 

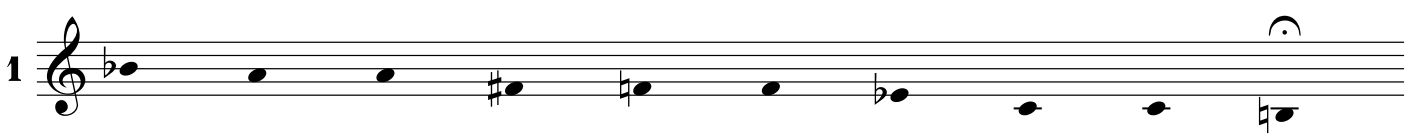
2 


1 

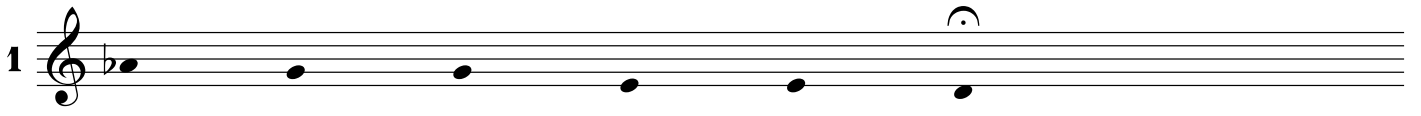
2 

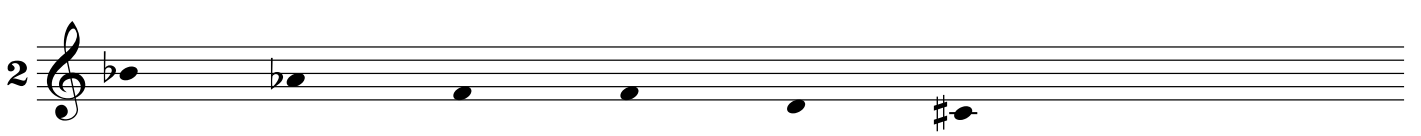
1 

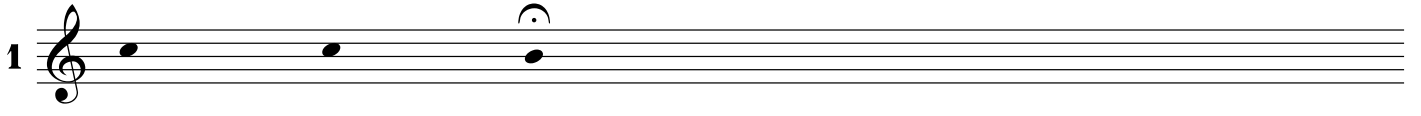
2 

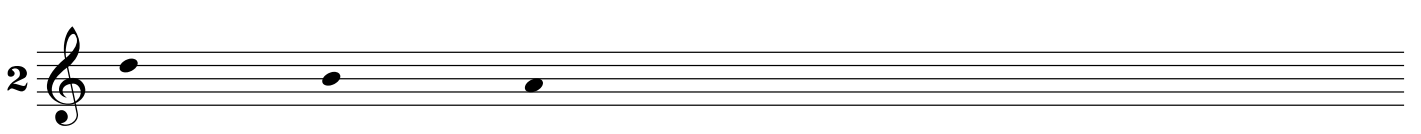
1 

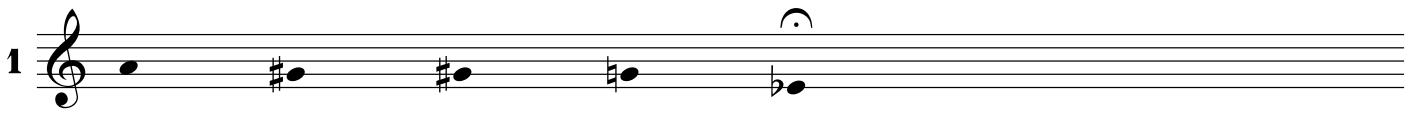
2 


1 

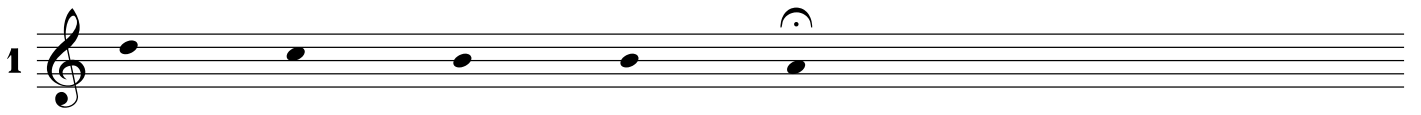
2 


1 


2 

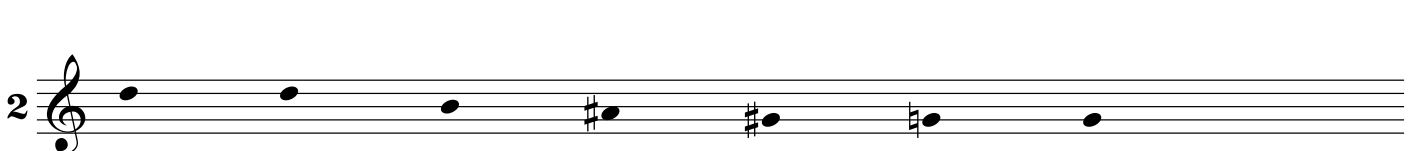
1 

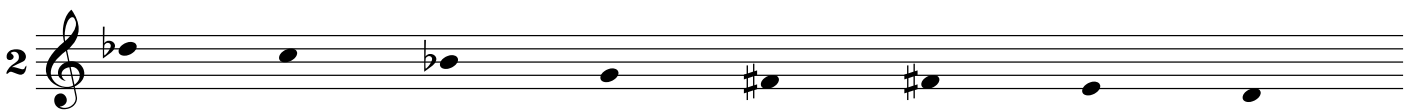
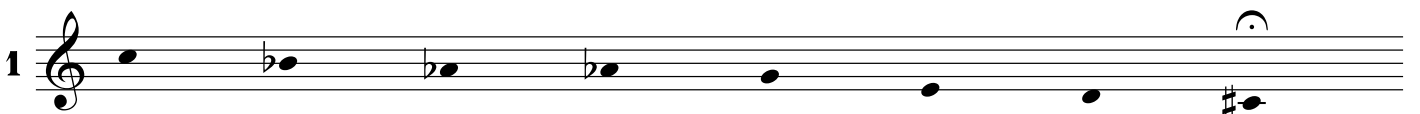
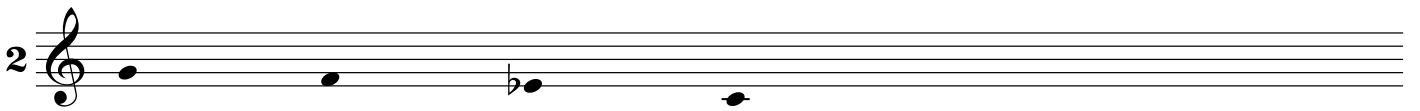
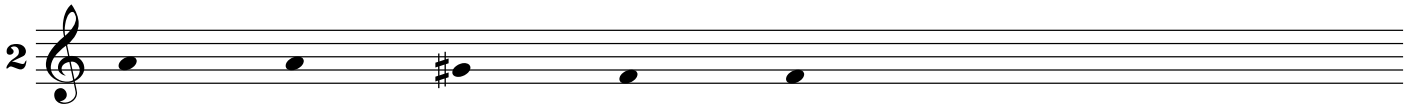
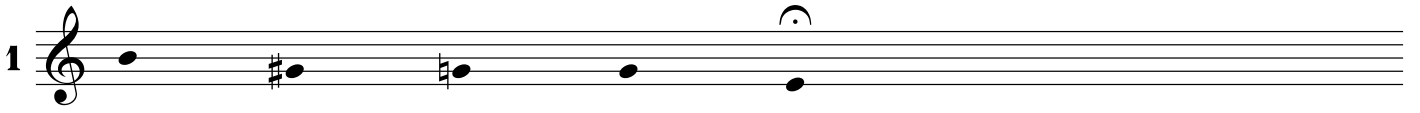
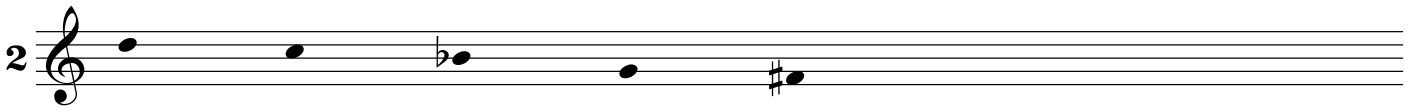
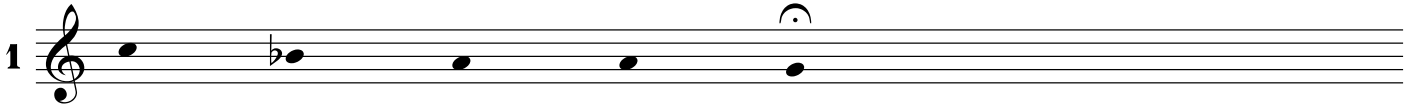
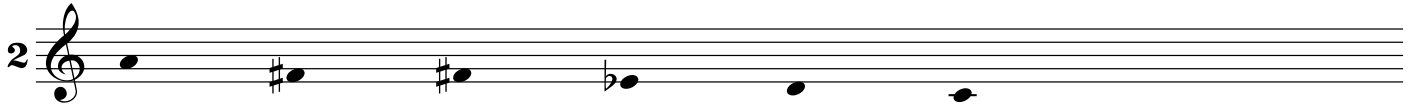
2 

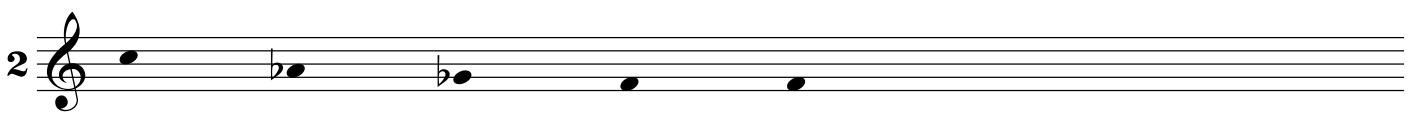
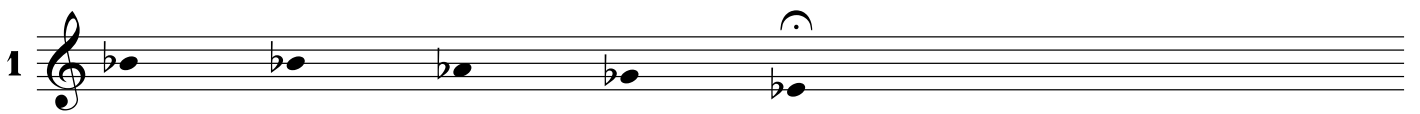
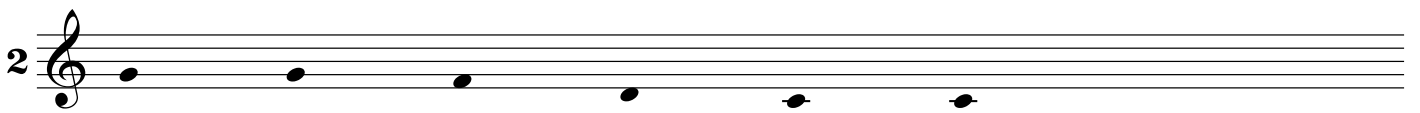
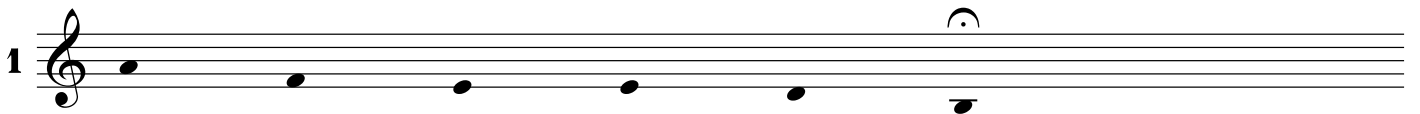
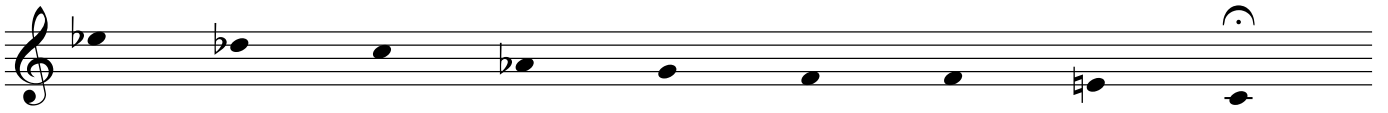
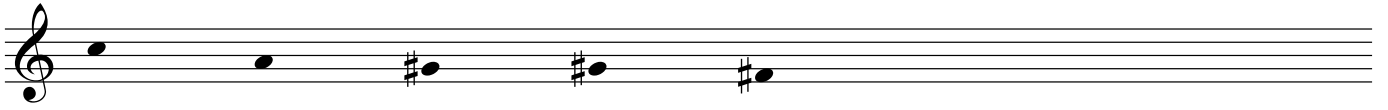
1 

2 

1 

2 





1 Musical staff 1, first system. Treble clef, key signature of one flat (Bb). Notes: Bb4, C5, D5, Eb5, F5, G5 (half note).

2 Musical staff 2, first system. Treble clef, key signature of one flat (Bb). Notes: Bb4, C5, D5, Eb5, F5, G5.

1 Musical staff 1, second system. Treble clef, key signature of one flat (Bb). Notes: Bb4, C5 (half note).

2 Musical staff 2, second system. Treble clef, key signature of one flat (Bb). Notes: Bb4, C5.

1 Musical staff 1, third system. Treble clef, key signature of one flat (Bb). Notes: Bb4, C5, D5, Eb5, F5, G5 (half note).

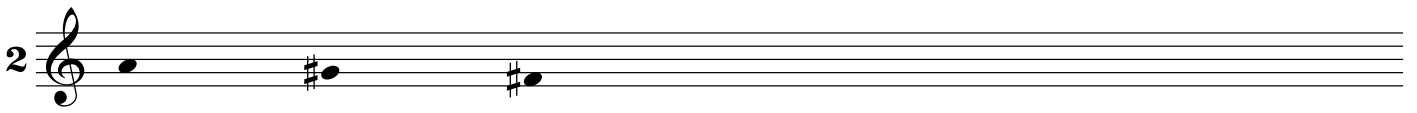
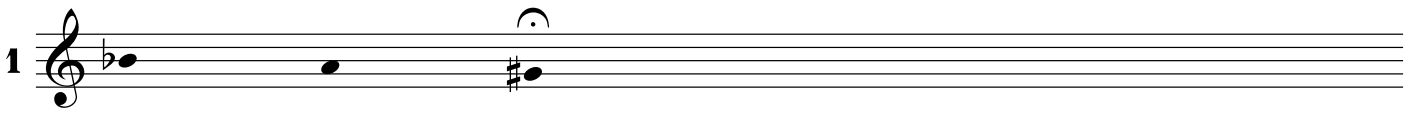
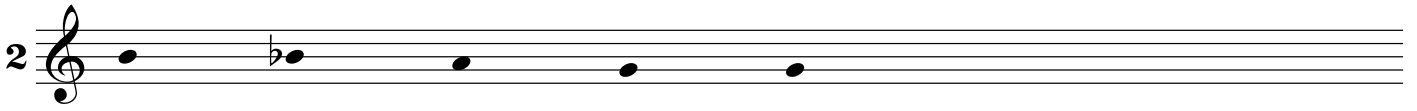
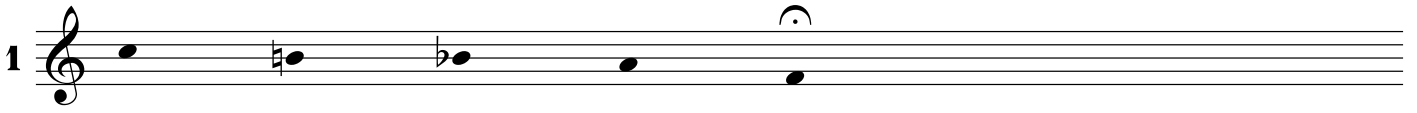
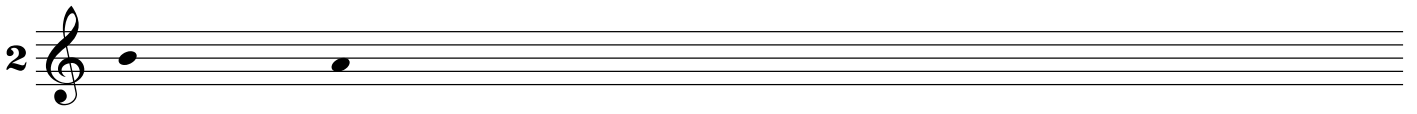
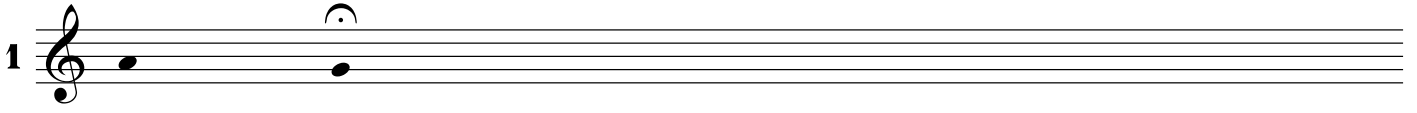
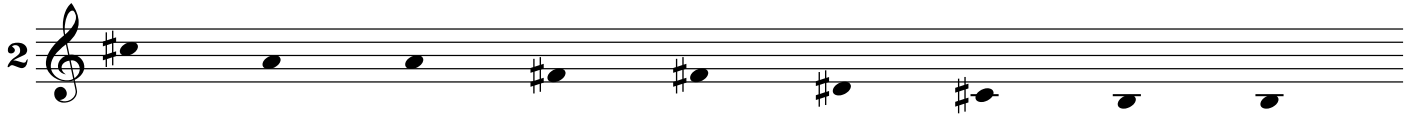
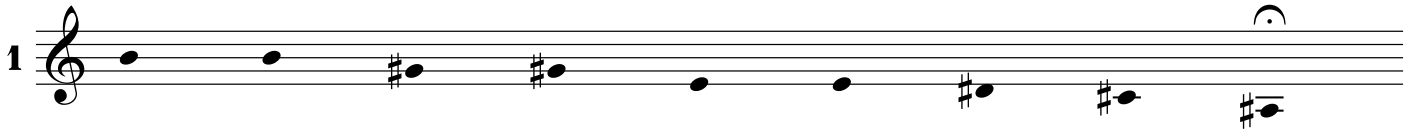
2 Musical staff 2, third system. Treble clef, key signature of one flat (Bb). Notes: Bb4, C5, D5, Eb5, F5, G5.

1 Musical staff 1, fourth system. Treble clef, key signature of one flat (Bb). Notes: Bb4, C#5, D5, Eb5, F5, G5 (half note).

2 Musical staff 2, fourth system. Treble clef, key signature of one flat (Bb). Notes: Bb4, C#5, D5, Eb5, F5, G#5.

1 Musical staff 1, fifth system. Treble clef, key signature of one flat (Bb). Notes: Bb4, C5, D5, Eb5, F5, G5 (half note).

2 Musical staff 2, fifth system. Treble clef, key signature of one flat (Bb). Notes: Bb4, C5, D5, Eb5, F5, G5.



1

2

1

2

1

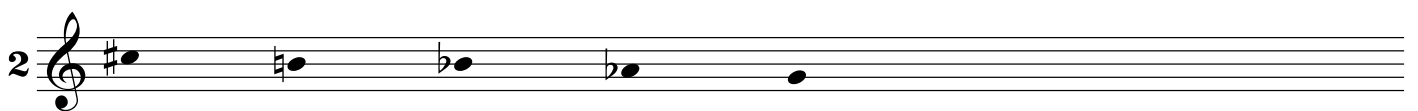
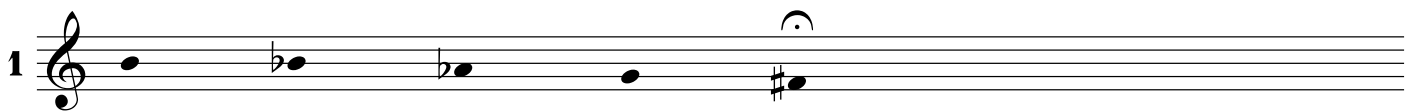
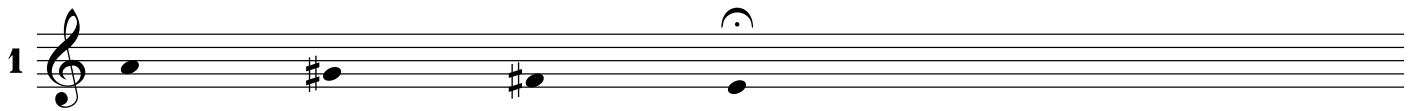
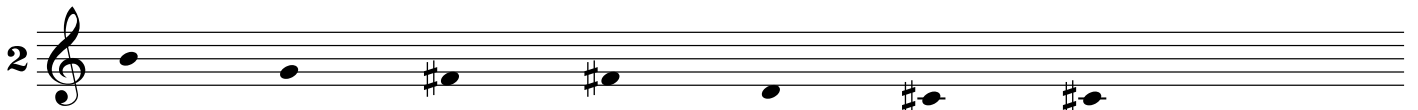
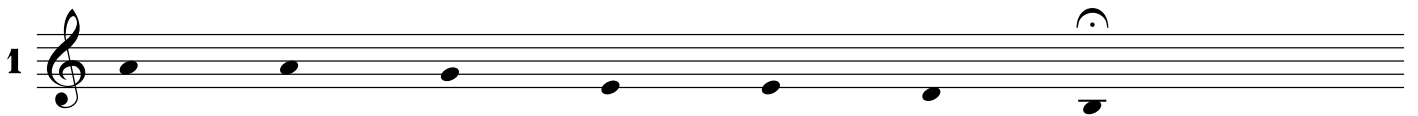
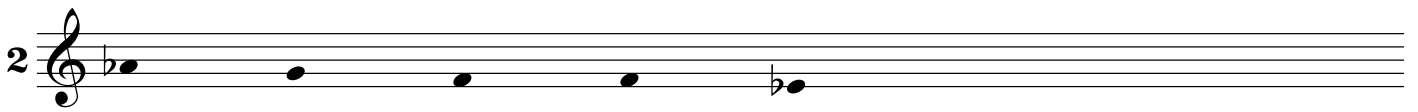
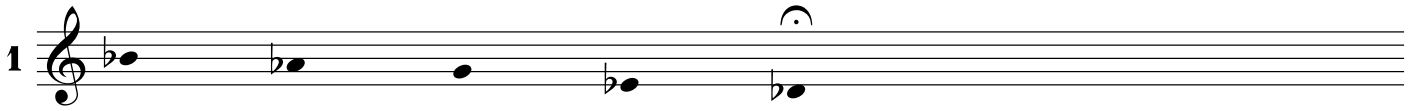
2

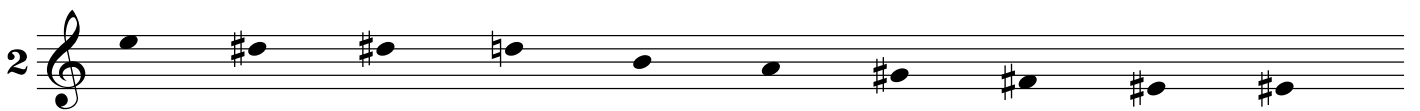
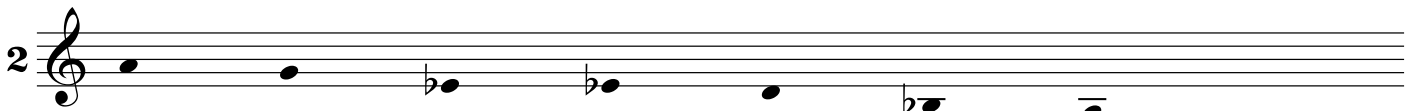
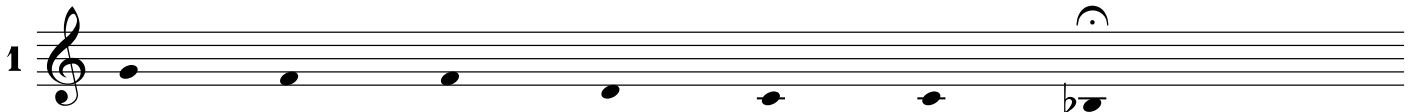
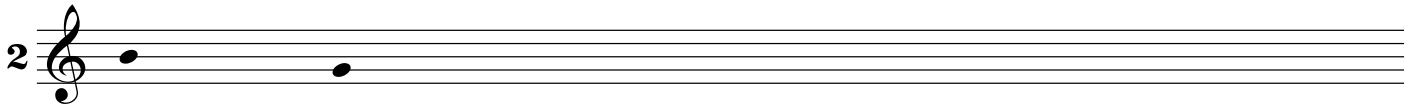
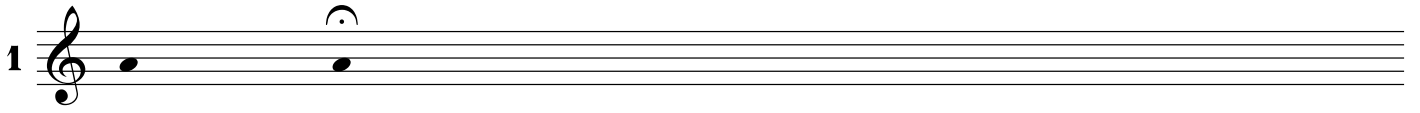
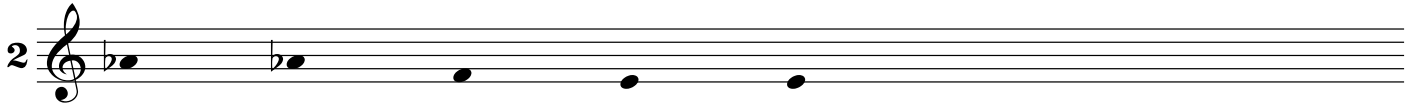
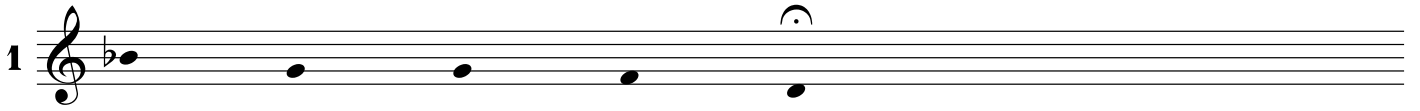
1

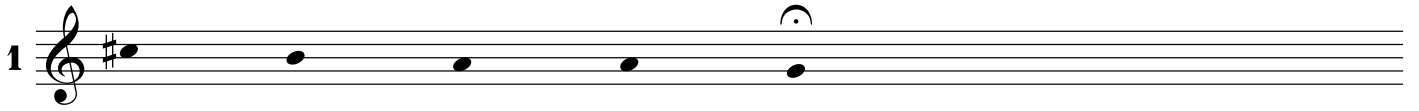
2

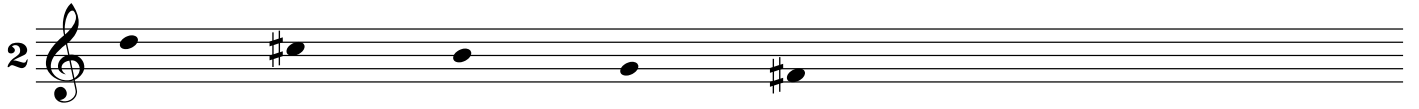
1

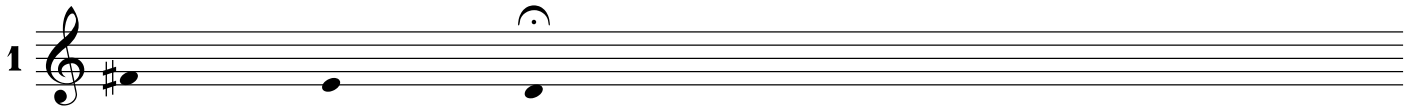
2

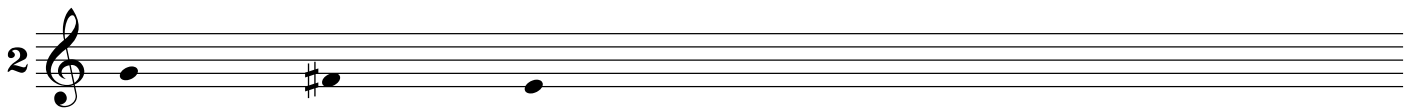





1 

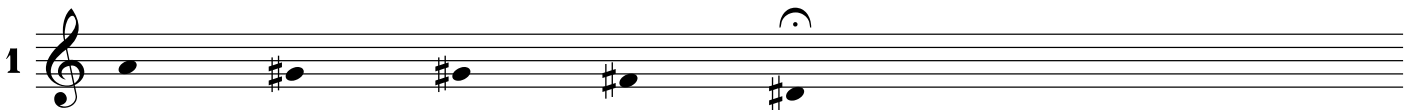
2 

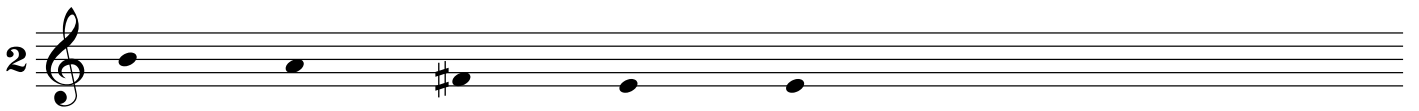
1 

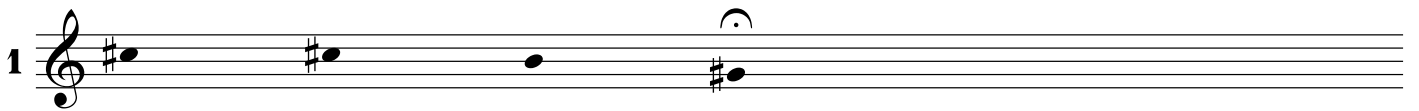
2 

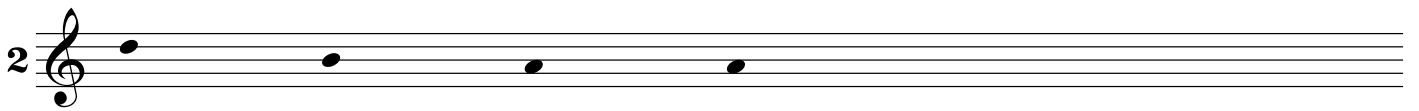
1 

2 

1 

2 

1 

2 

1

2

System 1: Two staves in treble clef. Staff 1 (labeled '1') has a key signature of one sharp (F#) and contains notes: F#4, G4, A4, B4, C5, B4, A4, G4, F#4. Staff 2 (labeled '2') contains notes: F#4, G4, A4, B4, C5, B4, A4, G4, F#4. Both staves end with a fermata over the final note.

1

2

System 2: Two staves in treble clef. Staff 1 (labeled '1') has a key signature of one sharp (F#) and contains notes: F#4, G4, A4, B4. Staff 2 (labeled '2') contains notes: F#4, G4, A4, B4. Both staves end with a fermata over the final note.

1

2

System 3: Two staves in treble clef. Staff 1 (labeled '1') has a key signature of one flat (Bb) and contains notes: Bb4, Ab4, Gb4. Staff 2 (labeled '2') contains notes: Bb4, Ab4, Gb4. Both staves end with a fermata over the final note.

1

2

System 4: Two staves in treble clef. Staff 1 (labeled '1') has a key signature of one sharp (F#) and contains notes: F#4, G4, A4, B4, C5, B4. Staff 2 (labeled '2') contains notes: F#4, G4, A4, B4, C5, B4. Both staves end with a fermata over the final note.

1

2

System 5: Two staves in treble clef. Staff 1 (labeled '1') contains notes: F#4, G4, A4, B4, C5. Staff 2 (labeled '2') contains notes: F#4, G4, A4, B4, C5. Both staves end with a fermata over the final note.