

aeolian harp

harp

eva-maria houben

edition wandelweiser **2009**

catalogue number ew16.120

aeolian harp

harp solo

eva-maria houben

2009

hector berlioz und anton webern abgehört. - listening to hector berlioz and anton webern.

for rhodri davies.

es gibt zwei, drei oder vier gestalten pro seite; diese können ad libitum kombiniert und wiederholt werden.

jede seite für sich spielen.

die reihenfolge der seiten ist frei.

insgesamt sehr leise, zart und leicht, fast schwebend – fast wie im traum.

huschend und flüchtig. fast wie nichts.

s. p. : sons pinçés (gezupft)

l. v. : laissez vibrer (klingen lassen)

gliss. ped. : pedalgliando

there are two, three, or four figures on each page.

you can connect these figures freely; repetitions ad libitum.

play each page of the score for itself.

free order of the pages.

the piece is soft, fragile, nearly light as the air, fugitive as a shadow. sometimes you probably will loose one sound or the other one.

finding a path into the piece while dreaming.

s. p. : sons pinçés (plucked)

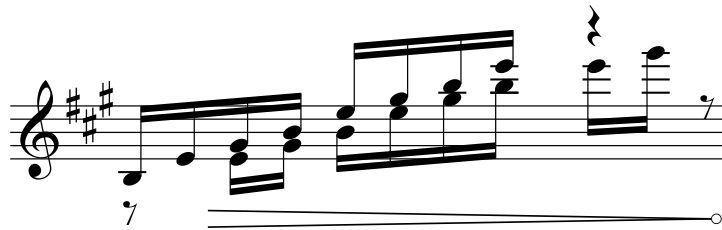
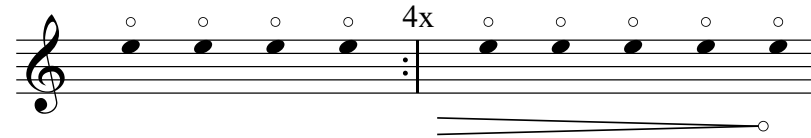
l. v. : laissez vibrer

gliss. ped. : glissando with the pedal.

Musical notation in treble clef with two sharps (F# and C#). The melody consists of eighth notes: F#4, G4, A4, B4, C5, D5, E5, F#5, G5, A5, B5, C6, D6, E6, F#6, G6, A6, B6, C7. There are two sixteenth-note rests at the end. Brackets above the staff indicate sixteenth-note groupings over the notes G4-A4-B4-C5 and D5-E5-F#5-G5.

Musical notation in bass clef showing an octave sign (8) and a fermata over a note on the second line (G2). The dynamic marking *f* and the instruction *l.v.* are written below the staff.

Musical notation in treble clef showing a sequence of notes with accidentals: #, b, #, b, #, b, #, b, #, b, #, b, #, b. A repeat sign with "3x" follows. The sequence continues with #, b, #, b, #, b, #, b. A double bar line is followed by a long horizontal line with a circle at the end.



gliss. ped.

A musical staff in treble clef with a key signature of one sharp (F#). The staff contains two lines of music. The first line has three notes: F#4, G4, and A4. The second line has three notes: F#4, G4, and A4. A horizontal line connects the notes in the first line to the notes in the second line, indicating a glissando. Below the staff, the text "gliss. ped." is written.

8va

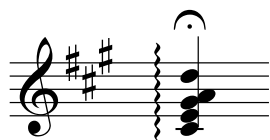
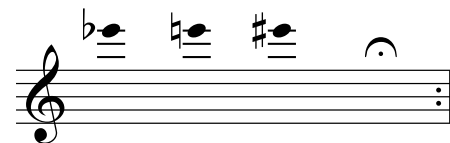
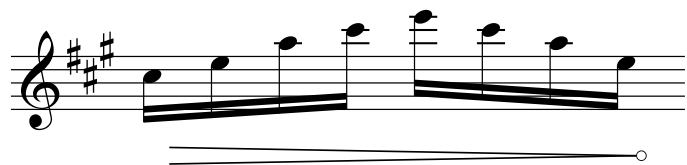
p *f*

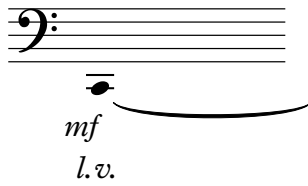
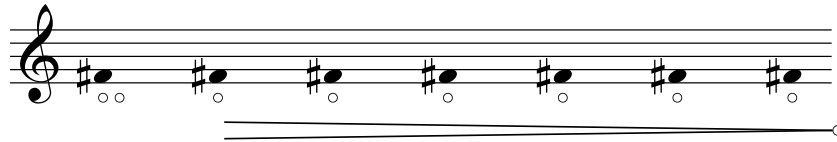
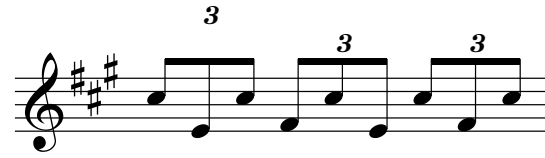
A musical staff in treble clef. The first line has two notes: G4 and A4. The second line has two notes: B4 and C5. A dashed line above the staff is labeled "8va" and connects the notes in the first line to the notes in the second line, indicating an 8va glissando. Below the staff, a wedge-shaped dynamic marking transitions from *p* (piano) on the left to *f* (forte) on the right.

A musical staff in treble clef with a key signature of two sharps (F# and C#). The staff contains a melodic line with notes: F#4, G4, A4, B4, C5, D5, E5, F#5. A horizontal line below the staff indicates a glissando.

Musical notation on a single staff in treble clef. The melody consists of a quarter note G4, a quarter note F4 with a flat, a quarter note G4, and a quarter rest. This is followed by a repeat sign (two dots) and a final bar line. The second bar of the repeat contains a quarter note G4, a quarter note F4, a quarter note E4, and a quarter note D4. An infinity symbol (∞) is positioned above the final bar line. The dynamic marking "s.p." is written below the first note.

Musical notation on a single staff in treble clef. The melody consists of a quarter note G4, a quarter note F4, a quarter note E4, a quarter note D4, a quarter note C4, a quarter note B3, and a quarter note A3. This is followed by a fermata symbol (a semi-circle with a vertical line) and a sharp sign (#) above the staff.





decresc.

gliss. ped.

gliss. ped.

f
l.v.

A musical staff in treble clef with a key signature of one flat (B-flat). The melody consists of a sequence of notes: B-flat, A, G, F, E, D, C, B-flat. Above the first two notes (B-flat and A) and the last two notes (C and B-flat), there are vertical lines representing tremolos. The instruction "s.p." is written below the staff.

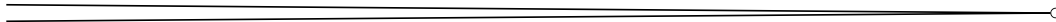
s.p.

A musical staff in treble clef with a key signature of three sharps (F#, C#, G#). The notation shows a quarter rest followed by a quarter note G# and a quarter note A.

A musical staff in treble clef with a key signature of one sharp (F#). The notation shows a glissando (slanted line) over a pair of notes (F# and G#) on the upper and lower staves. The instruction "gliss. ped." is written below the staff.

gliss. ped.

mf
l.v.



s.p.