

passages

flute

eva-maria houben

© edition wandelweiser **2013**

catalogue number ew16.187.1

passages

querflöte (in C)

flute (C flute)

eva-maria houben

2013

for anne horstmann.

drei ebenen –

- eine mittlere: ○, ●
- eine eher hohe: •<sup>~</sup>
- eine eher tiefe: ○

die klänge der mittleren ebene sind eher lang ( ○ ) und eher kurz ( ● ); beide sind eher leise. diese klänge erzeugen die „spur“, sie lassen es immer weitergehen.

die klänge der hohen ebene ( •<sup>~</sup> ) sind kurz, sehr leicht. sie verhalten in der stille der erinnerung (ein mehr oder weniger kurzes innehalten und verweilen nach jedem klang).

die klänge der tiefen ebene ( ○ ) sind kaum richtig da. sie werden hervorgebracht, indem man einen halben ton höher greift und den ton dann durch eindrehen der flöte senkt.

die römischen ziffern gibt die reihenfolge der abschnitte an. diese sind als „schleife“ angeordnet: der spieler / die spielerin kann mit irgendeinem abschnitt (z. b. mit III) anfangen, dann in der vorgegebenen reihenfolge fortfahren und schließlich mit irgendeinem abschnitt (z. b. mit I) aufhören.

three levels –

- medium: ○, ●
- higher level: •~
- lower level: ◉

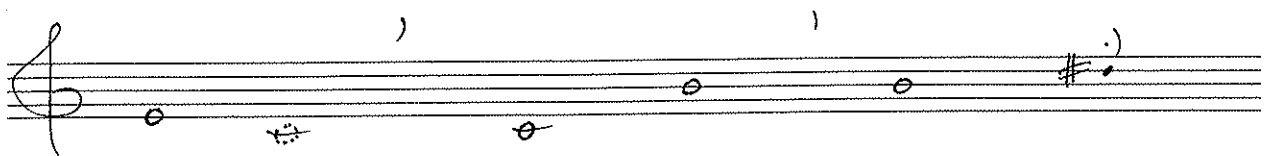
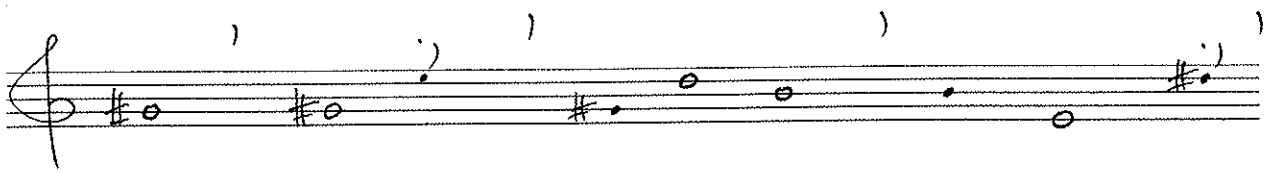
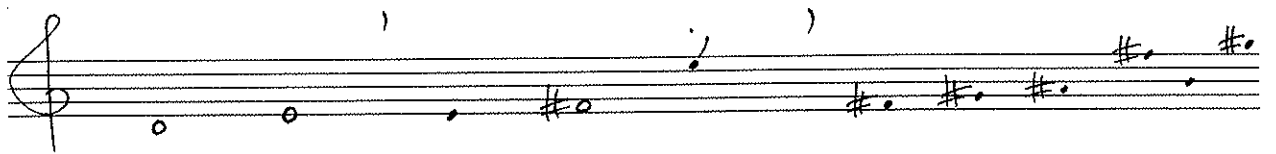
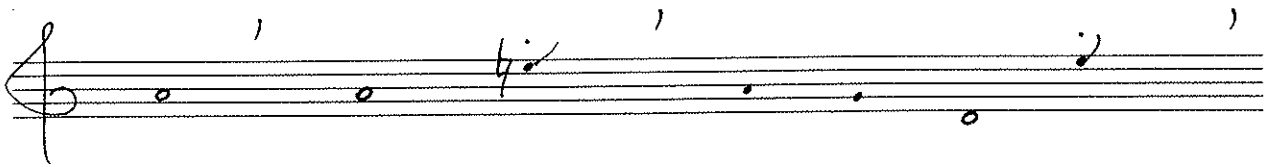
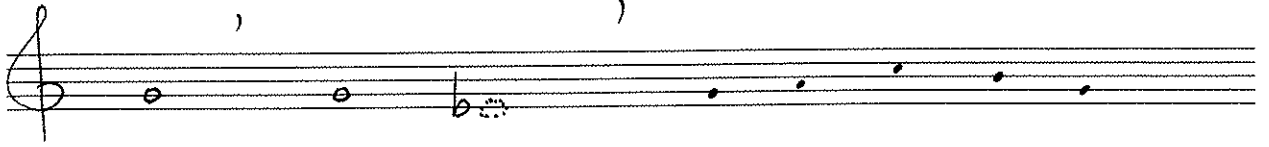
the sounds at the medium level are rather long ( ○ ) and rather short ( ● ); both are rather soft. these sounds create a “trail”, they allow to go on and on.

the sounds at the high level ( •~ ) are short, very delicate. they decay in the silence of remembrance.

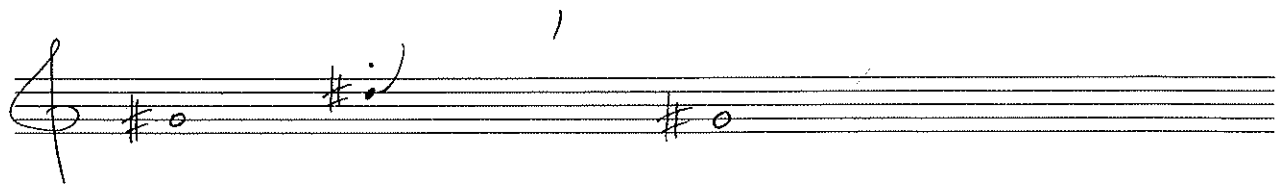
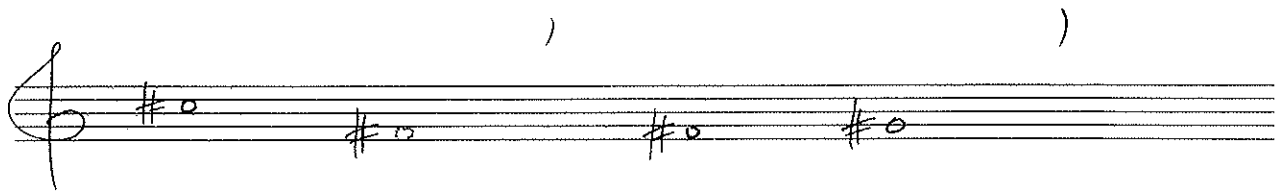
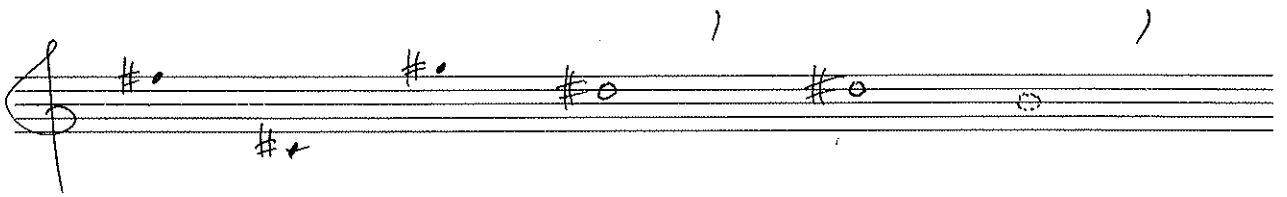
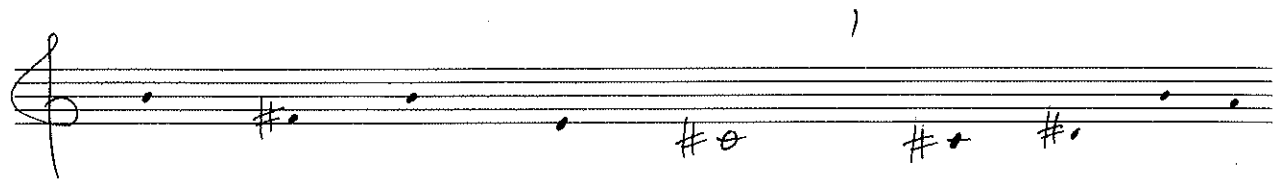
the sounds at the low level ( ◉ ) are barely existent. You create them by using the fingering of the tone, which is a half-tone higher than the written one, and by turning the flute inwards.

the roman numerals (I, II, III and so on) indicate the order of the sections. the sections are arranged as a loop: the performer may begin at any section ( for example at III), may continue in the given order, and finish at any section (for example at I).

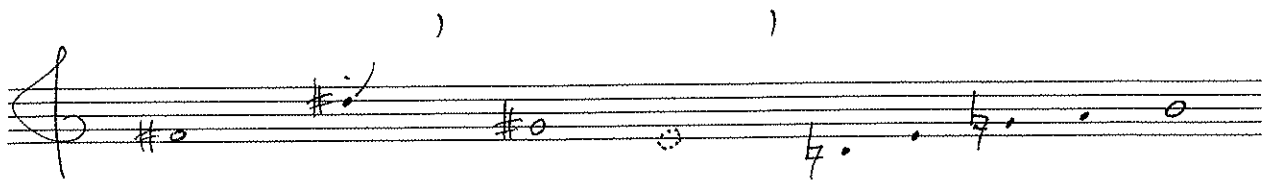
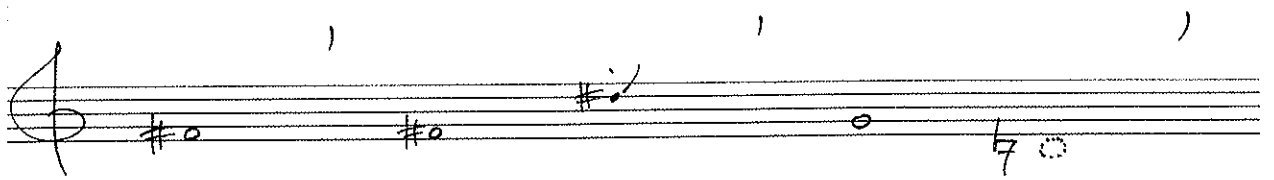
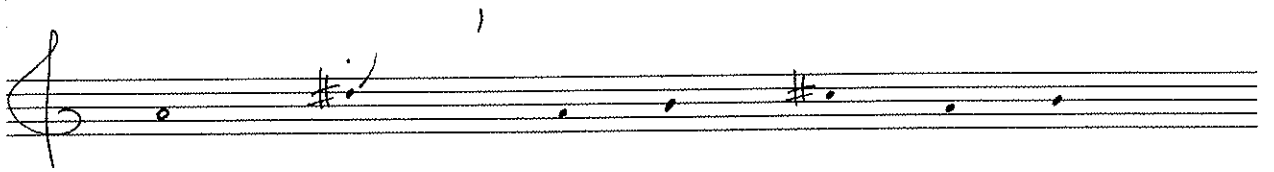
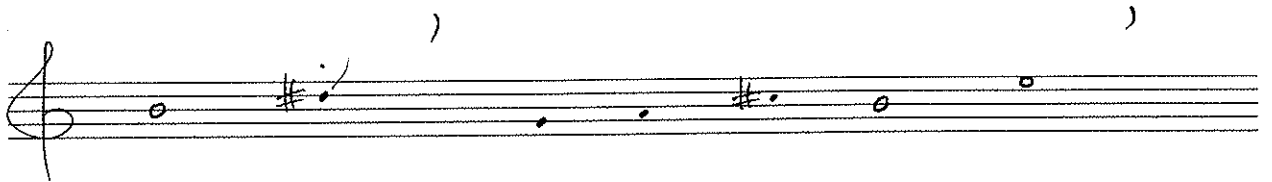
I



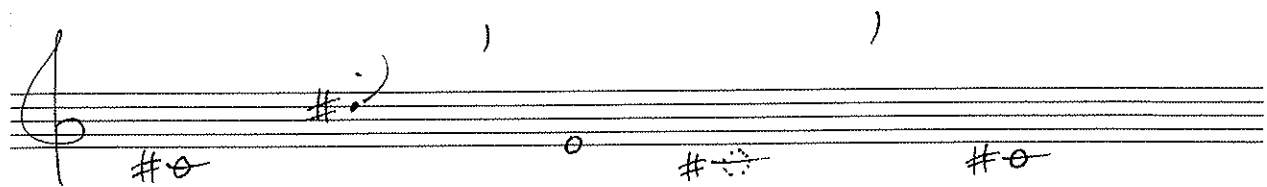
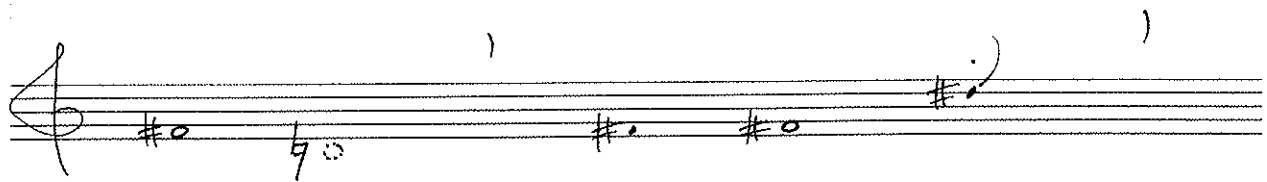
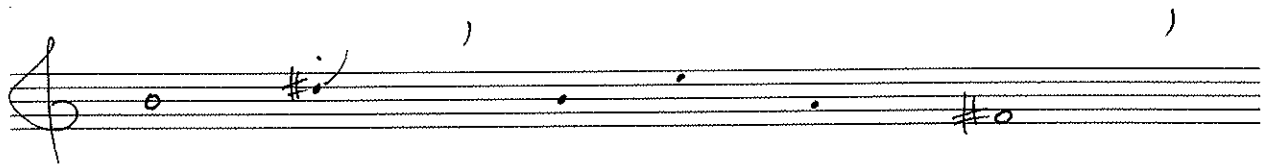
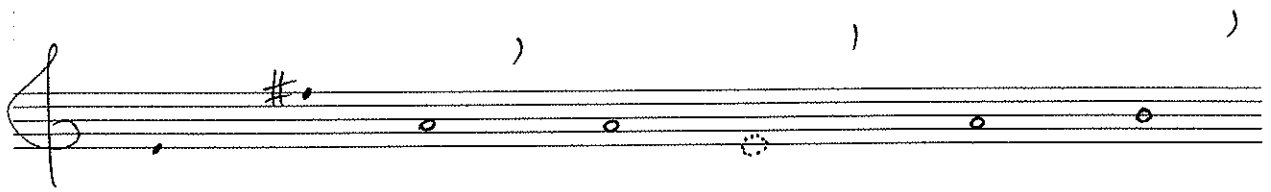
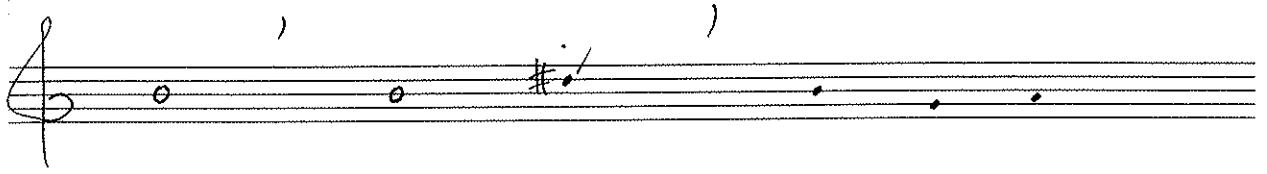
II



III

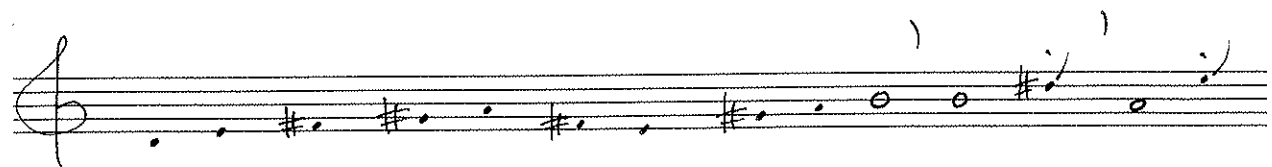
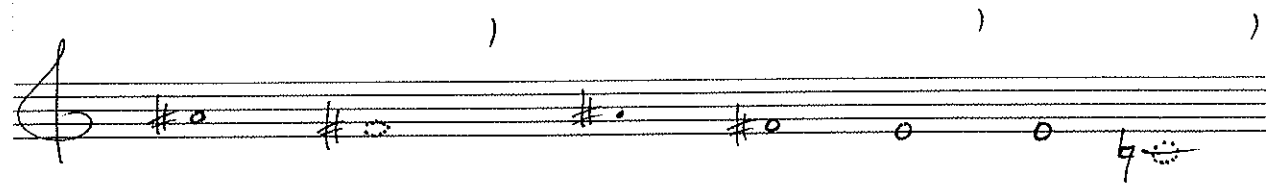
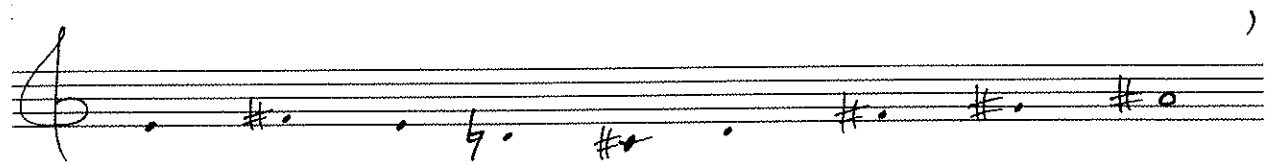
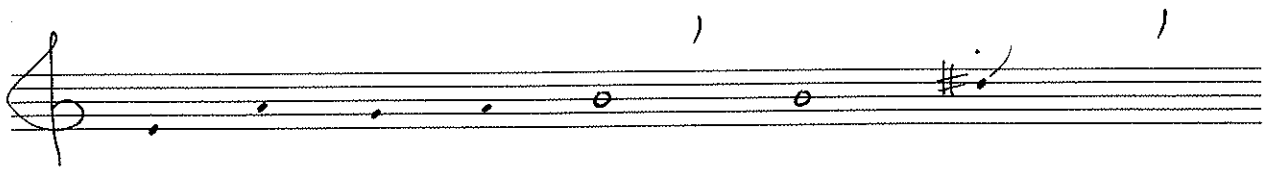
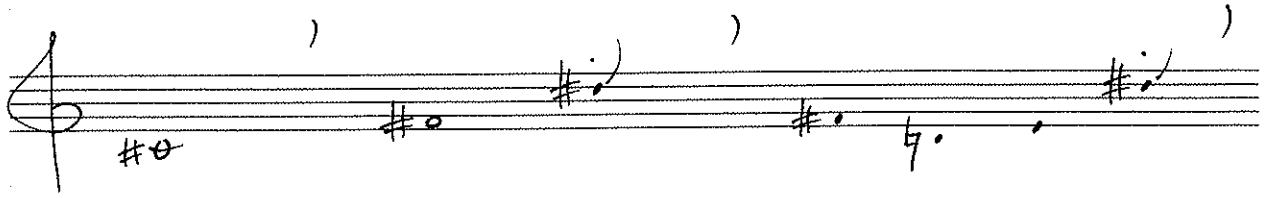


IV

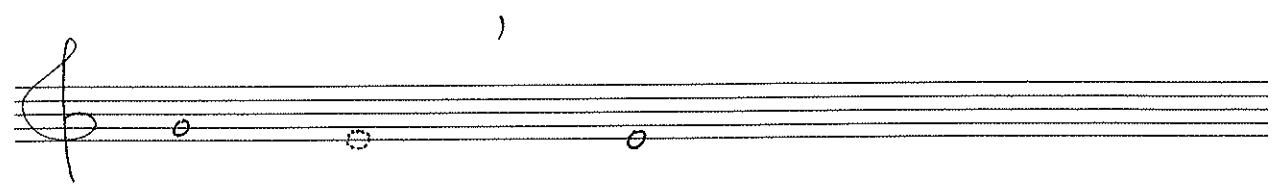
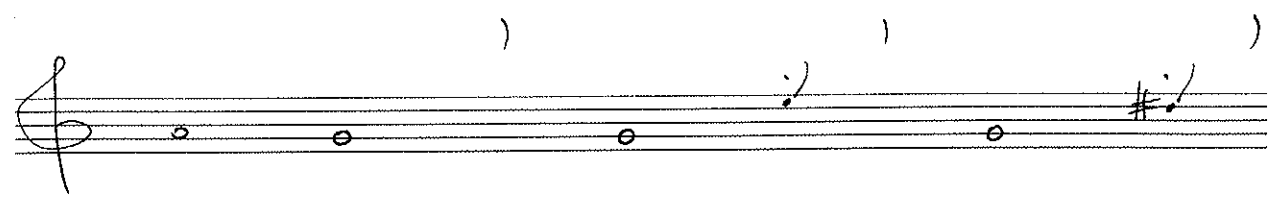
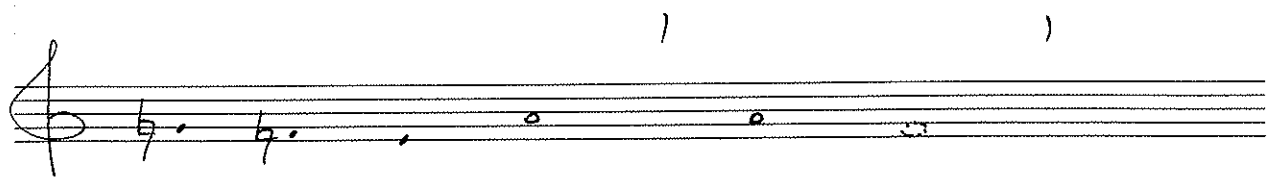
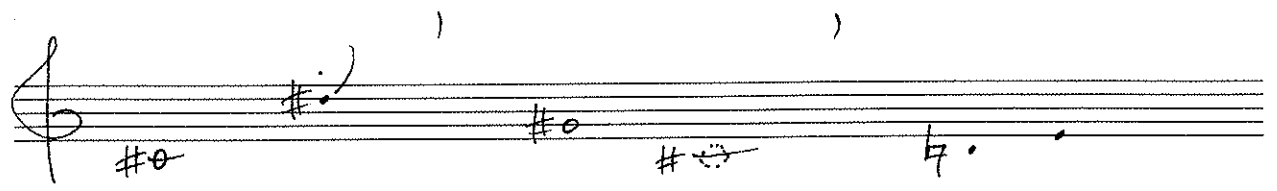
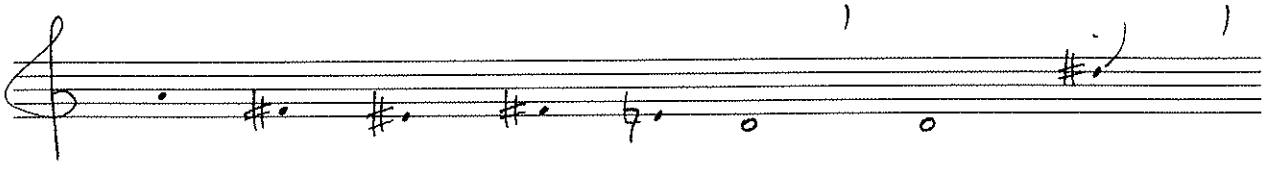




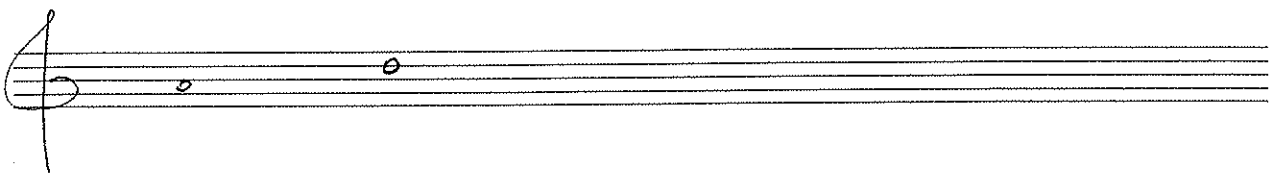
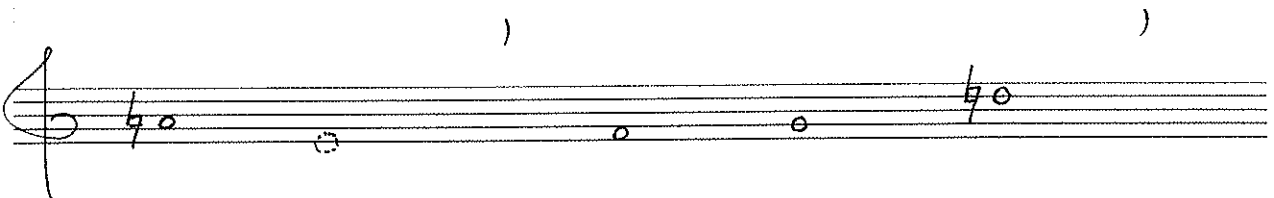
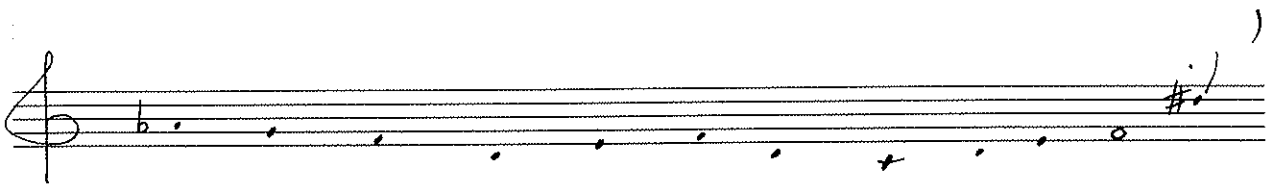
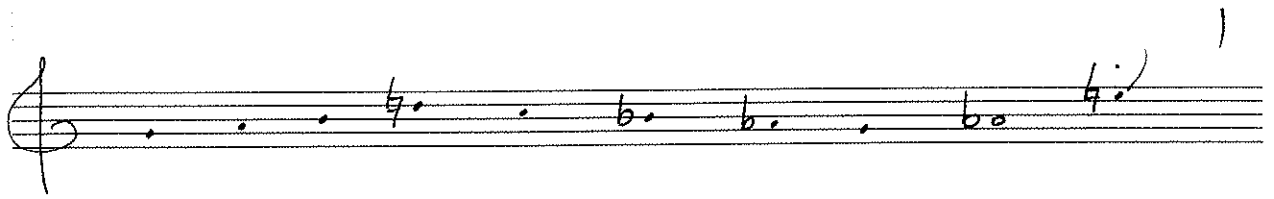
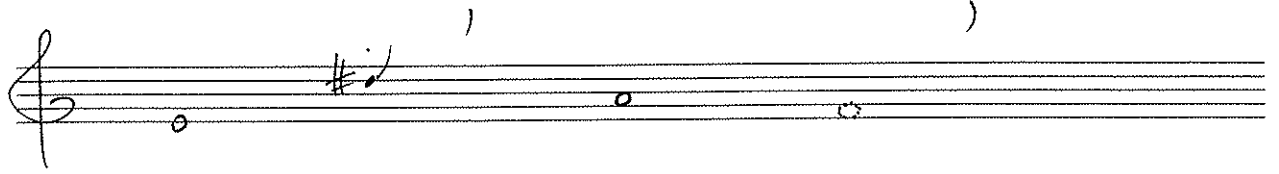
V



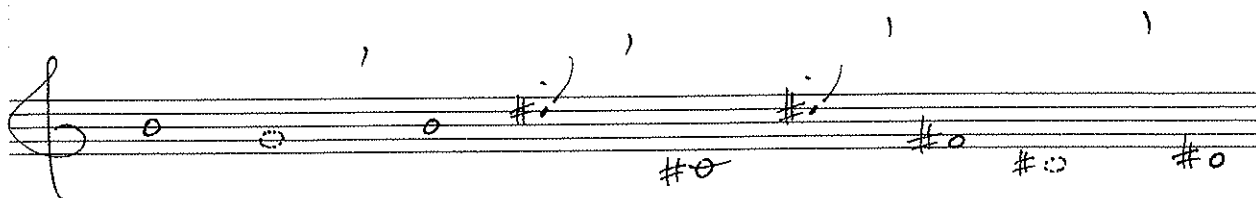
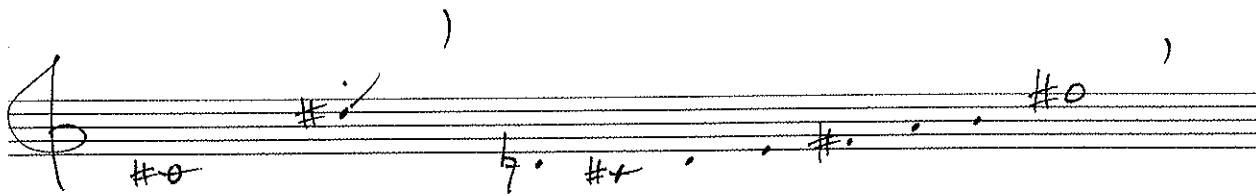
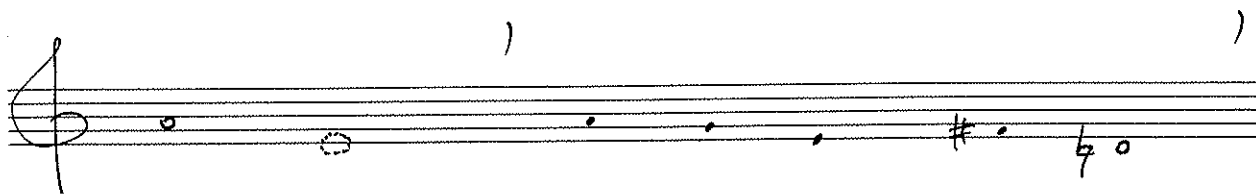
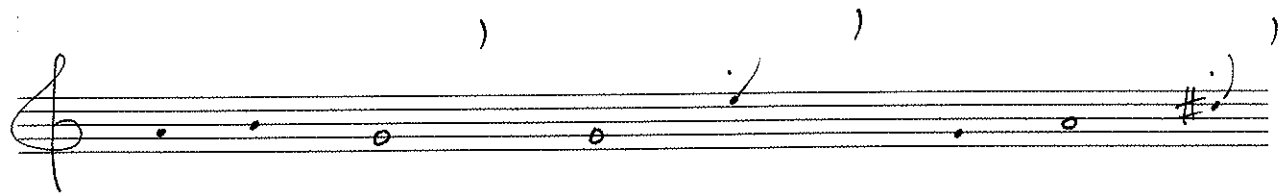
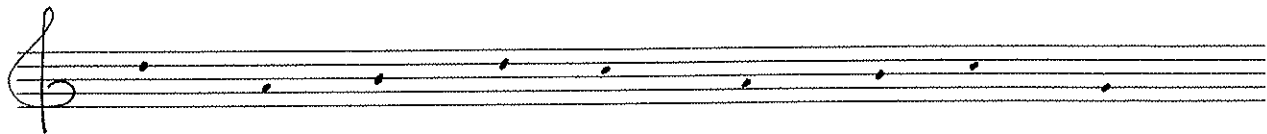
VI



VII



VIII



IX

