

# klänge und däfte

horn (F), ensemble

eva-maria houben

© edition wandelweiser **2014**

catalogue number ew16.203

klänge und düfte

cadenza für horn in F und begleitung (var.)

eva-maria houben

2014

brahms abgehört (symphonie nr. 2, 2. satz: adagio non troppo)

listening to brahms (symphony no. 2, 2<sup>nd</sup> movement: adagio non  
troppo)

horn:

○ : (sehr) lang.

● : eher kurz.

sehr, sehr ruhig. weite und gelassenheit.

für sich spielen – kaum an ein publikum gerichtet.

die intensität ergibt sich aus der haltung: zuversicht, vertrauen,  
hingabe.

ensemble:

das ensemble hüllt die hornstimme in ein weiches, zartes,  
vorzugsweise weit aufgefächertes oktav-unisono ein.

der jeweilige unisono-ton ist auf der entsprechenden seite  
angegeben ( ●).

immer (sehr) lang.

immer sehr, sehr leise – manchmal vielleicht fast unhörbar leise.

einsätze frei.

horn:

○ : (very) long.

● : rather short.

very, very quiet. wide spaces; tranquility.

play for yourself—hardly addressed to an audience.

the volume may be a result of the attitude: confidence, reliance,  
dedication.

ensemble:

the ensemble envelops the voice of the horn in a soft and tender,  
preferably widely spread octave-unison.

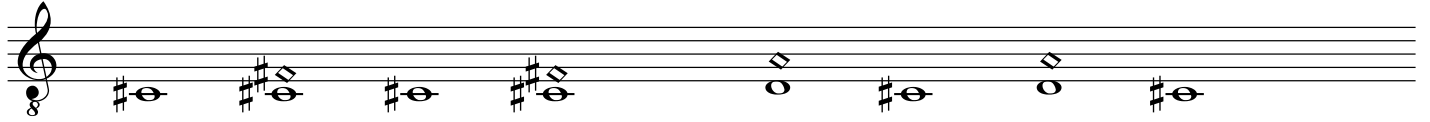
the pitch of the octave-unison is given in each case on the  
relevant page (●).

always (very) long.

always very, very soft—sometimes perhaps nearly inaudibly soft.

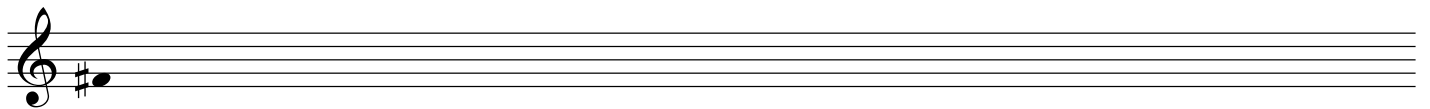
all entries are free.

horn



come un eco

ens.



horn

A musical staff for horn in G major, 3/8 time. It contains seven measures. The notes are: G4 (quarter), A4 (quarter), G4 (quarter), F#4 (quarter), E4 (quarter), D4 (quarter), and C4 (quarter). There are three comma-separated rests above the staff: one after the first measure, one after the third measure, and one after the fifth measure.

come un eco

A musical staff for horn in G major, 3/8 time. It contains seven measures. The notes are: G4 (quarter), A4 (quarter), G4 (quarter), F#4 (quarter), E4 (quarter), D4 (quarter), and C4 (quarter). There are three comma-separated rests above the staff: one after the first measure, one after the third measure, and one after the fifth measure.

come un eco

A musical staff for horn in G major, 3/8 time. It contains seven measures. The notes are: G4 (quarter), A4 (quarter), G4 (quarter), F#4 (quarter), E4 (quarter), D4 (quarter), and C4 (quarter). There are three comma-separated rests above the staff: one after the first measure, one after the third measure, and one after the fifth measure.

come un eco

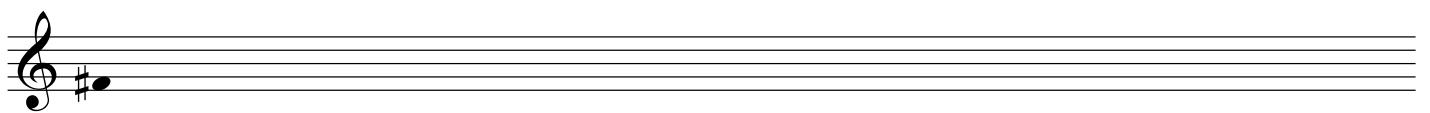
ens.

An empty musical staff with a treble clef and a common time signature, intended for the ensemble.

horn



ens.



horn

A musical staff in treble clef with a key signature of one sharp (F#). The notes are: F#4 (quarter), G#4 (quarter), a whole rest, F#4 (quarter), G#4 (quarter), A5 (quarter), B5 (quarter), and A5 (quarter). There are commas above the first and last notes.

A musical staff in treble clef with a key signature of one sharp (F#). The notes are: F#4 (quarter), G#4 (quarter), A5 (quarter), B5 (quarter), a whole rest, F#4 (quarter), G#4 (quarter), A5 (quarter), B5 (quarter), A5 (quarter), G#4 (quarter), F#4 (quarter), E5 (quarter), D5 (quarter), C5 (quarter), and B4 (quarter). There are commas above the first, third, and fifth notes.

A musical staff in treble clef with a key signature of one sharp (F#). The notes are: F#4 (quarter), G#4 (quarter), A5 (quarter), B5 (quarter), a whole rest, F#4 (quarter), G#4 (quarter), A5 (quarter), B5 (quarter), A5 (quarter), G#4 (quarter), and F#4 (quarter). There is a comma above the fifth note. The text "come un eco" is written below the staff.

ens.

A musical staff in treble clef with a key signature of one sharp (F#). The notes are: F#4 (quarter), G#4 (quarter), and A5 (quarter).







horn

A musical staff in treble clef with a key signature of one sharp (F#). The staff contains a sequence of notes: a whole note F#4, a whole note F#4, a half note G#4, and a whole note F#4. Above the staff, there are three commas (',') indicating breath marks. Below the staff, there are dynamic markings: a piano (p) dynamic for the first two notes, and a mezzo-forte (mf) dynamic for the last two notes.

come un eco

A musical staff in treble clef with a key signature of one sharp (F#). The staff contains a sequence of notes: a whole note F#4, a whole note G#4, a half note G#4, a whole note G#4, a half note A#4, a whole note A#4, and a whole note G#4. Above the staff, there are two commas (',') indicating breath marks. Below the staff, there are dynamic markings: a piano (p) dynamic for the first two notes, and a mezzo-forte (mf) dynamic for the last four notes.

come un eco

ens.

A musical staff in treble clef with a key signature of one sharp (F#). The staff contains a sequence of notes: a quarter note F#4, a quarter note G#4, and a quarter note A#4.

horn

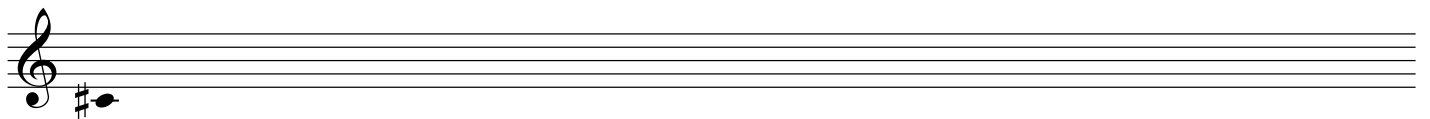


come un eco



come un eco

ens.



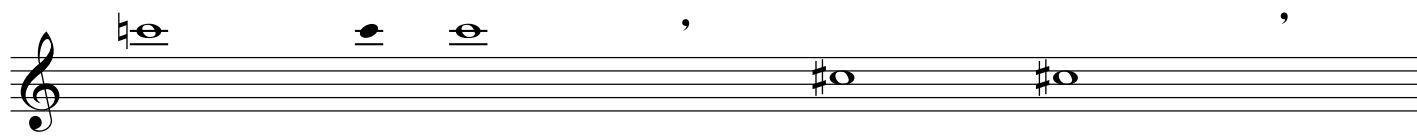
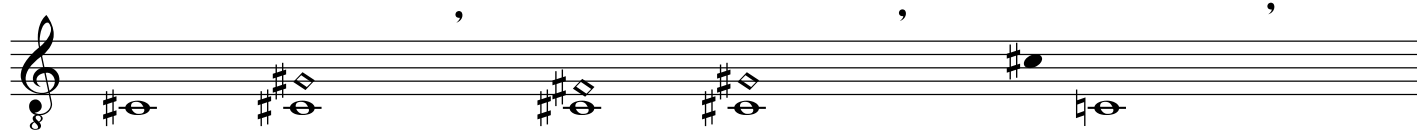
horn



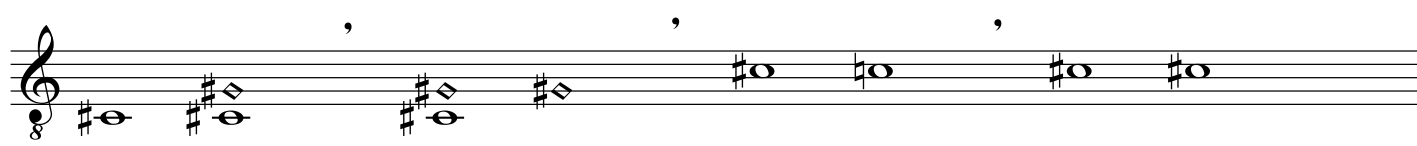
ens.



horn



come un eco



come un eco

ens.

