

# images 2

female voice

eva-maria houben

© edition wandelweiser **2014**

catalogue number ew16.208

images 2

frauenstimme

female voice

eva-maria houben

2014

noch einmal für irene.

for irene, again.

eine frau – (fast) wie im freien.

ganz für sich – fast gar nicht an ein publikum gerichtet.

alle zeit der welt.

ein blatt nach dem andern

nehmen, betrachten, verweilen

– singen.

gänzlich ohne hast.

für die melodien ein eigenes ruhiges tempo finden.

das tempo kann sich von seite zu seite (ein wenig) verändern,

bleibt aber für eine melodie das gleiche.

fermate: beliebig oft wiederholen.

a woman – (almost) outdoors.

for herself – almost not addressed to an audience.

all the time in the world.

take one page after the other, look upon it, linger

– sing.

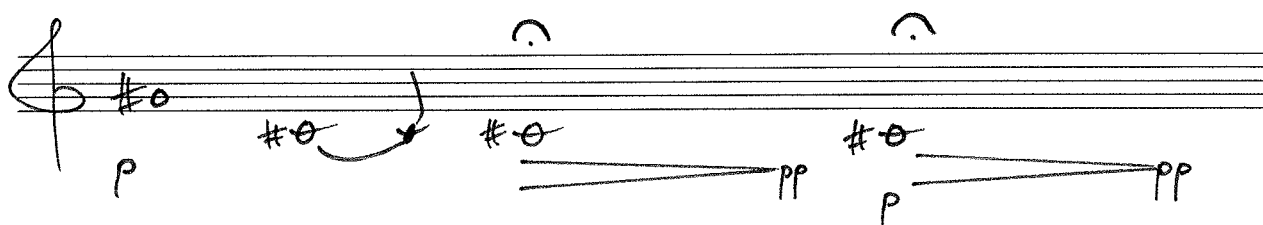
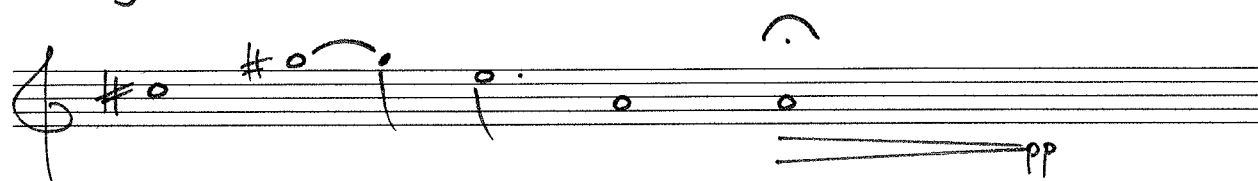
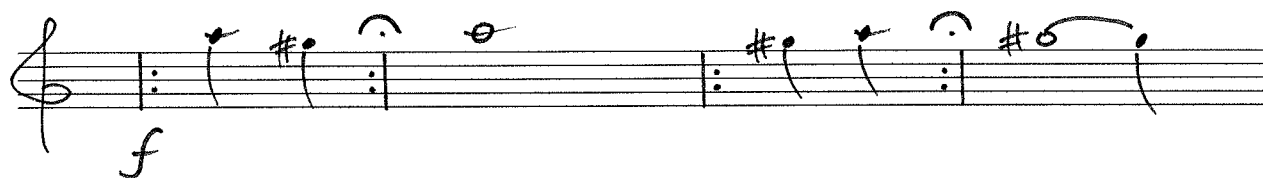
entirely without haste.

find an own tempo for the melodies.

the tempo may change (a little) from page to page, but remains

the same for one melody.

fermata: repeat as often as you like.



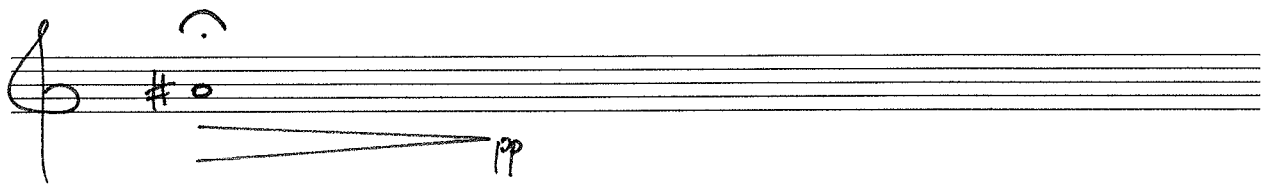
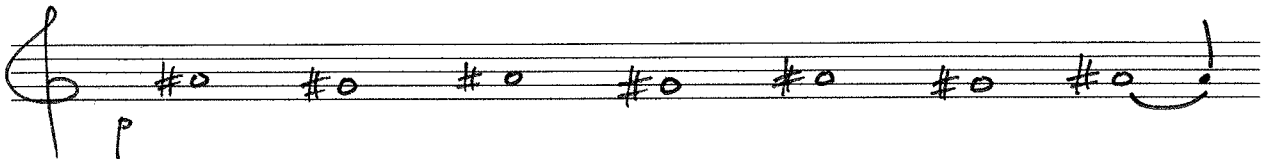
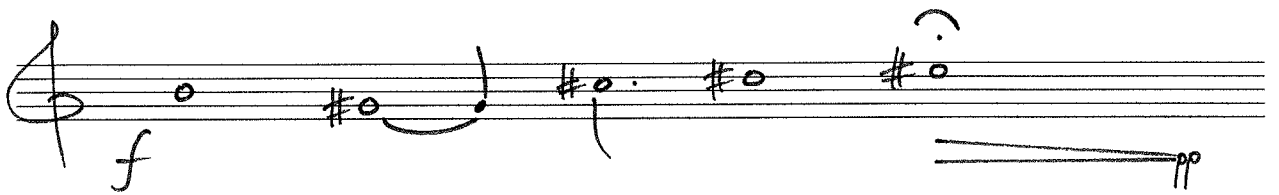
Handwritten musical notation on two staves. The top staff begins with a treble clef and a dynamic marking 'f'. The bottom staff includes dynamic markings 'pp' and 'p'. The notation consists of notes, rests, and slurs on a five-line staff.

Handwritten musical notation on two staves. The top staff begins with a treble clef, a key signature of one sharp (F#), and a dynamic marking of *f*. It contains a sequence of notes: a quarter note F#, a half note G, a quarter note A, a quarter note B, a quarter note C, a quarter note D, a quarter note E, and a quarter note F. The bottom staff also begins with a treble clef and a key signature of one sharp. It contains a sequence of notes: a quarter note F, a quarter note G, a quarter note A, a quarter note B, a quarter note C, a quarter note D, a quarter note E, and a quarter note F. There are dynamic markings of *pp* and *p* below the staff, and slurs over the notes.

Handwritten musical notation on two staves. The first staff starts with a treble clef, a key signature of one flat (B-flat), and a dynamic marking of *f*. It contains a melodic line with a slur over the first two notes, a dotted half note, and a quarter note. The second staff continues the melody with a slur over the first two notes, a dotted half note, and a quarter note, with dynamic markings of *pp*, *p*, *pp*, *p*, and *pp* indicated by slanted lines.



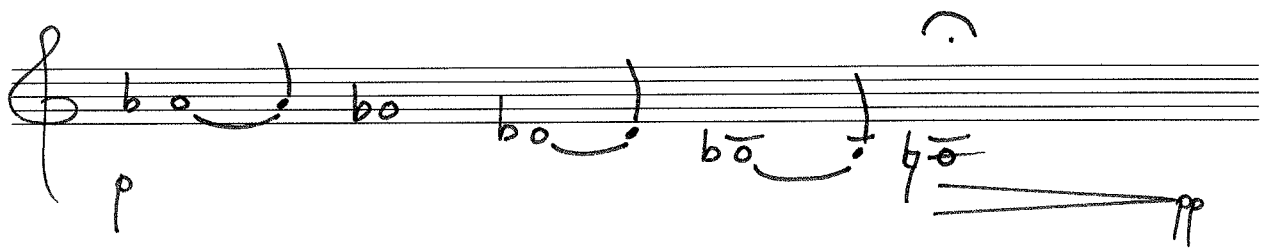
Handwritten musical notation on two staves. The top staff contains a melodic line with notes: F#4, G4, A4, B4, C5, D5, E5, F#5. Dynamics include *f*, *pp*, and *f*. The bottom staff contains a bass line with notes: F#3, G3, A3, B3, C4, D4, E4, F#4. Dynamics include *pp*, *p*, and *pp*. There are repeat signs and slurs in both staves.



Handwritten musical notation on two staves. The first staff begins with a treble clef and a dynamic marking 'f'. It contains notes with flats and slurs. The second staff begins with a treble clef and dynamic markings 'pp' and 'p'. It also contains notes with flats and slurs.

Handwritten musical notation on two staves. The top staff starts with a treble clef, a key signature of one flat (B-flat), and a dynamic marking of *f*. It contains a sequence of notes: a half note G4, a quarter note A4, a quarter note B-flat4, a quarter note C5, a quarter note B-flat4, a quarter note A4, and a half note G4. The bottom staff also starts with a treble clef and a key signature of one flat. It contains a sequence of notes: a half note G4, a quarter note A4, a quarter note B-flat4, a quarter note C5, a quarter note B-flat4, a quarter note A4, and a half note G4. Both staves end with a hairpin indicating a decrescendo to a pianissimo (*pp*) dynamic.

Handwritten musical notation on three staves. The first staff begins with a treble clef, a common time signature, and a dynamic marking of *f*. It contains a sequence of notes: a whole note G, a half note F with a flat, a half note E with a flat, a quarter note D with a flat, a quarter note C with a flat, a quarter note B with a flat, a quarter note A with a flat, a quarter note G, a quarter note F with a flat, a quarter note E with a flat, a quarter note D with a flat, a quarter note C with a flat, a quarter note B with a flat, a quarter note A with a flat, a quarter note G, a quarter note F with a flat, a quarter note E with a flat, and a quarter note D with a flat. The second staff starts with a treble clef and a key signature of one flat. It contains a sequence of notes: a whole note G, a half note F with a flat, a half note E with a flat, a quarter note D with a sharp, a quarter note C with a sharp, a quarter note B with a sharp, a quarter note A with a sharp, a quarter note G, a quarter note F with a sharp, a quarter note E with a sharp, and a quarter note D with a sharp. The third staff starts with a treble clef and contains a sequence of notes: a whole note G, a half note F with a sharp, a half note E with a sharp, a quarter note D with a sharp, a quarter note C with a sharp, a quarter note B with a sharp, a quarter note A with a sharp, a quarter note G, a quarter note F with a sharp, a quarter note E with a sharp, and a quarter note D with a sharp. Dynamic markings include *pp* and *p* with hairpins indicating crescendos and decrescendos.



Handwritten musical notation on two staves. The top staff begins with a treble clef and a dynamic marking *f*. It contains a sequence of notes: a quarter note, a half note with a flat, a quarter note with a slur, a quarter note, a repeat sign, a quarter note with a flat, a quarter note with a flat, a quarter note with a fermata, and a quarter note with a dot. The bottom staff begins with a treble clef and contains a quarter note with a fermata, a half note with a flat, a half note with a flat, a quarter note with a slur, and a quarter note with a fermata. Below the bottom staff are two dynamic markings: *pp* with a wedge-shaped hairpin, *p*, and another *pp* with a wedge-shaped hairpin.

Handwritten musical notation on two staves. The top staff begins with a treble clef and a dynamic marking 'f'. It contains a sequence of notes: a quarter note, a half note, a quarter note, a dotted quarter note, a quarter note, and a half note. The bottom staff begins with a treble clef and a dynamic marking 'p'. It contains a sequence of notes: a quarter note, a half note, a quarter note, a dotted quarter note, and a half note. Both staves end with a double bar line and a dynamic marking 'pp'.



Handwritten musical notation on two staves. The top staff begins with a treble clef and a forte 'f' dynamic. It contains a sequence of notes: a half note G4, a quarter note A4, a half note Bb4, a quarter note C5, a half note Bb4, and a half note A4. The bottom staff begins with a treble clef and a piano 'p' dynamic. It contains a sequence of notes: a quarter note G4, a quarter note A4, a quarter note Bb4, a quarter note C5, a half note Bb4, and a half note A4. Both staves feature slurs and dynamic markings including 'pp' (pianissimo) and 'p' (piano).

