

confidential letter # 10

for voice and piano

antoine beuger

© **edition wandelweiser 2011**

katalognummer ew 01.154

confidential letter # 10
for voice and piano

antoine beuger
2011

for sandra

thanks to elizabeth barrett browning: "44 sonnets from the portuguese"

44 lines

each line consisting of some phonemes and a piano chord

all sounds are long, sometimes very long: a quiet breath (voice), laissez vibrer (piano)

all sounds are very soft, very gentle, deeply confident

acknowledging blanks and line breaks as (smaller, longer) pauses

still maintaining some continuity

playing the piano chord somewhere within the line

s like in sound

š like in sharp

f like in fine

ç like in licht (german)

x like in lachen

s f s ç

Musical notation for the first system. The treble clef staff has a whole note on G5 with a dynamic marking of ff above it. The bass clef staff has a whole note on F#4 with a dynamic marking of ff below it.

ç f

Musical notation for the second system. The upper treble clef staff has a whole note on G5 with a dynamic marking of ff above it and an $8va$ marking above the staff. The lower treble clef staff has a whole note on F#4 with a dynamic marking of ff below it.

ç

Musical notation for the third system. The treble clef staff has a whole note on G5 with a dynamic marking of ff above it. The bass clef staff has a whole note on F#4 with a dynamic marking of ff below it.

s s

Musical notation for the fourth system. The treble clef staff has a whole note on G5 with a dynamic marking of ff above it. The bass clef staff has a whole note on F#4 with a dynamic marking of ff below it.

ç ś s f

Musical notation for the fifth system. The treble clef staff has a whole note on F#4 with a dynamic marking of ff below it. The bass clef staff has a whole note on G5 with a dynamic marking of ff above it.

f x

Musical notation for the phoneme pair 'f x'. The notation consists of two staves: a treble clef staff and a bass clef staff. Above the treble staff, there is a sharp sign (#) followed by a note on the first line (F5), with '8va' written above it. Below the bass staff, there is a note on the first line (F4).

s š x

Musical notation for the phoneme pair 's š x'. The notation consists of two staves: a treble clef staff and a bass clef staff. Above the treble staff, there is a note on the first line (F5), with '8va' written above it. Below the bass staff, there is a note on the first line (F4), with '8va' written below it.

s ç

Musical notation for the phoneme pair 's ç'. The notation consists of two staves: a treble clef staff and a bass clef staff. Above the treble staff, there is a note on the first line (F5). Below the bass staff, there is a note on the first line (F4).

s ç s

Musical notation for the phoneme pair 's ç s'. The notation consists of two staves: a treble clef staff and a bass clef staff. Above the treble staff, there is a note on the first line (F5). Below the bass staff, there is a note on the first line (F4).

x s

Musical notation for the phoneme pair 'x s'. The notation consists of two staves: a treble clef staff and a bass clef staff. Above the treble staff, there is a flat sign (b) followed by a note on the first line (F5), with '8va' written above it. Below the bass staff, there is a note on the first line (F4), with a flat sign (b) written below it.

s f s f

Musical notation for the first system, showing a treble and bass clef with a key signature of one flat and a common time signature.

f s ç f

Musical notation for the second system, showing a treble and bass clef with a common time signature.

s s s ş

Musical notation for the third system, showing a treble and bass clef with a key signature of one flat and a common time signature.

ç s

Musical notation for the fourth system, showing a treble and bass clef with a key signature of one flat and an 8va marking above the treble staff.

ç

Musical notation for the fifth system, showing a treble and bass clef with a key signature of one sharp and an 8va marking below the bass staff.

s ŝ s



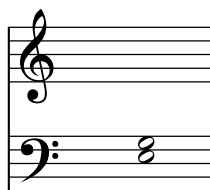
ç



ç f



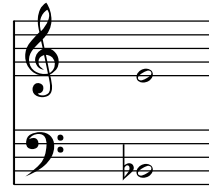
s s f



ç



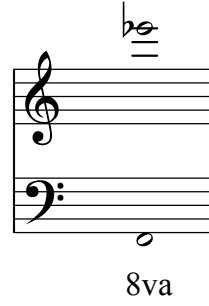
s



š

f

š



s

ç



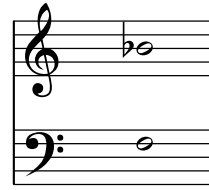
s



š



š

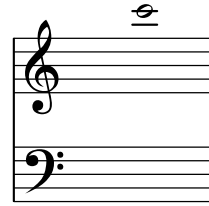


š

ç

ç

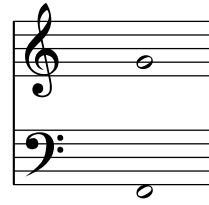
s



8va

f

x



ç

ç



ç

ç

f

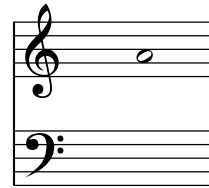
x



s s



s š



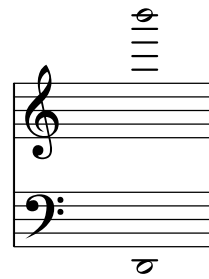
8va

8va

s



ç f



8va

s s ç



s s f ç

Musical notation for the first system. The treble clef staff has a sharp sign above the staff and an 8va marking above the staff. The bass clef staff has a sharp sign below the staff.

f f s ç

Musical notation for the second system. The treble clef staff has a sharp sign above the staff. The bass clef staff has a sharp sign below the staff.

s s s f

Musical notation for the third system. The treble clef staff has a sharp sign above the staff and an 8va marking above the staff. The bass clef staff has a sharp sign below the staff.

ç s

Musical notation for the fourth system. The treble clef staff has a sharp sign above the staff. The bass clef staff has a sharp sign below the staff.

ç s

Musical notation for the fifth system. The top treble clef staff has a sharp sign above the staff and an 8va marking above the staff. The bottom treble clef staff has a sharp sign below the staff.

s



ç

š

s

f

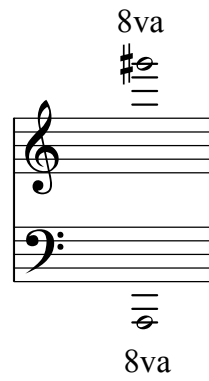


ç

ç

s

ç



s

