

# ein bogenstrich II

violoncello

eva-maria houben

© edition wandelweiser **2002**

catalogue number ew16.011b

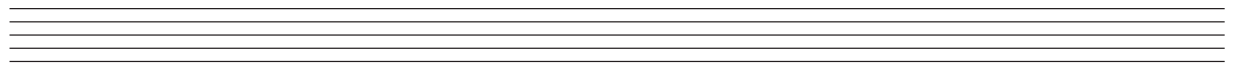
ein bogenstrich II

für cello solo

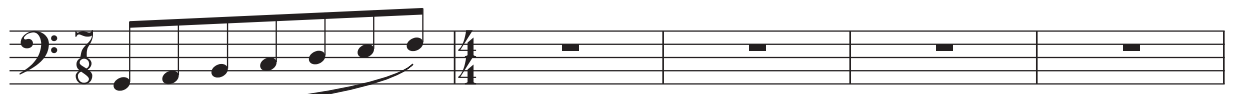
for violoncello

eva-maria houben

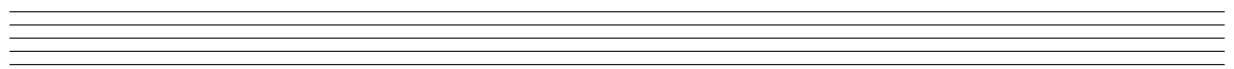
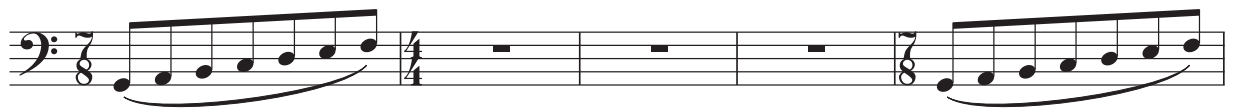
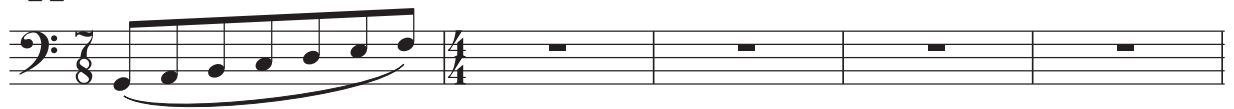
2011



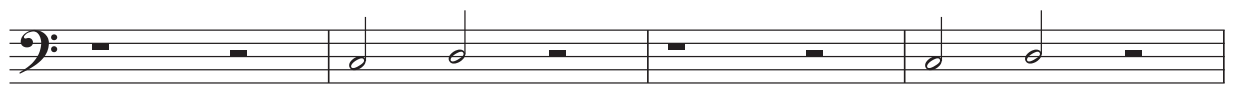
♩ = 60

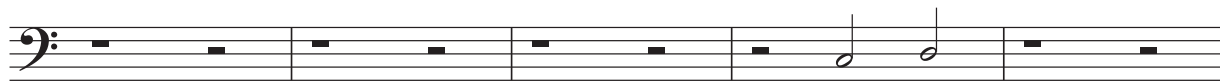
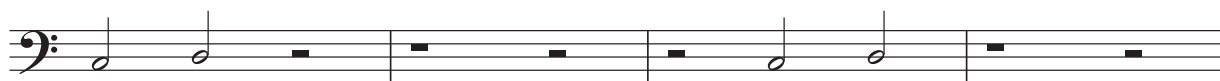


*pp legato*

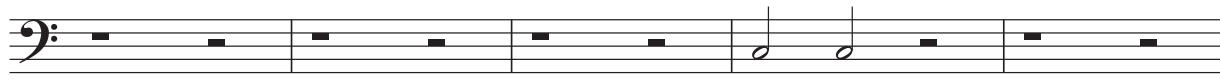
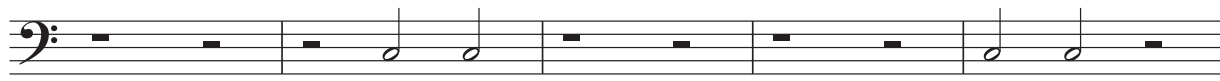


♩ = 75

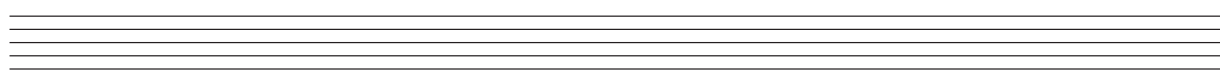
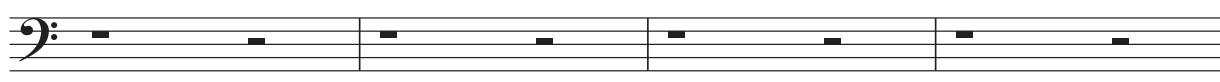




46

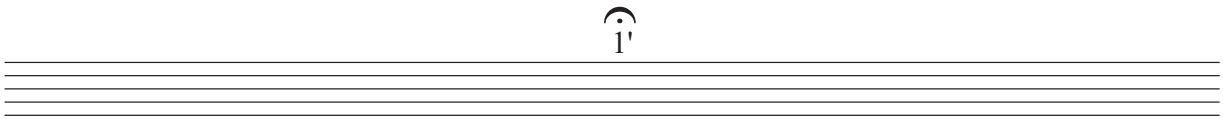
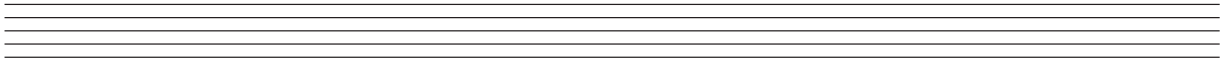
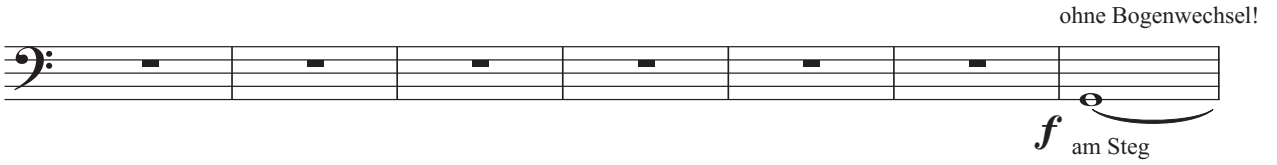


54



$\text{♩} = 60$      $\vee$  und  $\sqcap$  im wechsel (leere saiten)





$\text{♩} = 60$   
ohne Bogenwechsel!

