

# ein bogenstrich IX

violoncello

eva-maria houben

© edition wandelweiser **2003**

catalogue number ew16.011i

ein bogenstrich IX

für cello solo

for violoncello

eva-maria houben

2003

jeder flageolett-klang ein ruhiger bogenstrich, leise (pp).  
pfeil abwärts:  $\frac{1}{4}$ -ton tiefer.

unterschiedlich lange stille abschnitte...

es bleibt

- runde einfache fermate: eine zeitlang,
- runde doppelte fermate: etwas länger,
- eckige fermate: lange,
- eckige doppelte fermate: sehr, sehr lange

still.

dauer des stücks: eine stunde und länger, auch viel länger.

each flageolet a quiet bow, soft (pp).

arrow downwards:  $\frac{1}{4}$ -tone lower.

silent section of different duration...

it remains silent

round simple fermata: for a while,

round double fermata: somewhat longer,

angular fermata: for a long time,

double angular fermata: for a very long time.

duration of the piece: one hour and longer, even much longer.

A musical staff with a bass clef. It contains three diamond-shaped notes on the second line. The first and third notes are connected by a slur. A downward-pointing arrow is positioned above the second note.

A musical staff with a bass clef. It contains seven diamond-shaped notes on the second line. The first and third notes are connected by a slur. The fifth and seventh notes are also connected by a slur. Three downward-pointing arrows are positioned above the second, fourth, and sixth notes.

A musical staff with a bass clef. It contains seven diamond-shaped notes on the second line. The first five notes are connected by a slur. The sixth and seventh notes are also connected by a slur. Two downward-pointing arrows are positioned above the sixth and seventh notes.

A musical staff with a bass clef. It contains seven diamond-shaped notes on the second line. The first six notes are connected by a slur. The seventh note is also connected by a slur. Six downward-pointing arrows are positioned above the first six notes.

A musical staff with a bass clef. It contains ten diamond-shaped notes on the second line, all connected by a single slur.

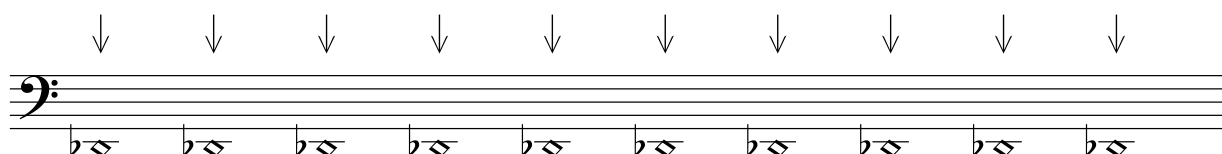
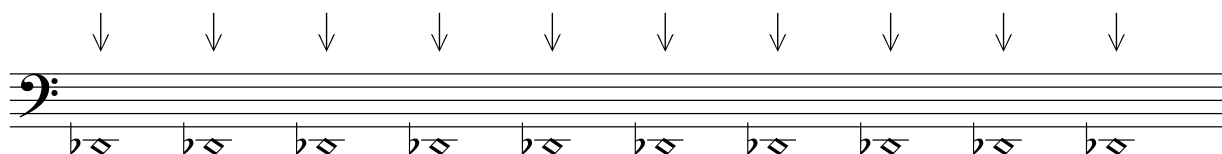
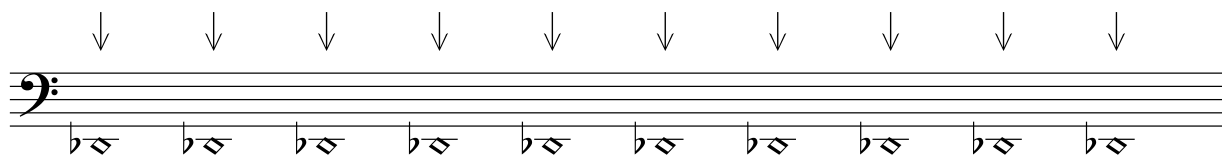
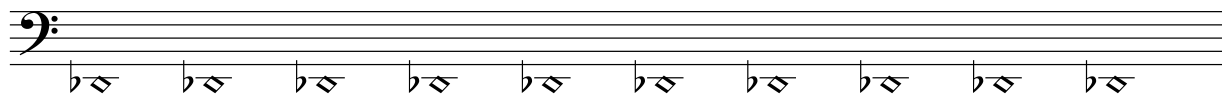
A bass clef staff with a dotted quarter note on the second line. Three downward-pointing arrows are positioned above the staff, corresponding to the first three measures of the staff.

A bass clef staff with ten downward-pointing arrows positioned above the staff, corresponding to the first ten measures of the staff.

A bass clef staff with eight downward-pointing arrows above the staff, corresponding to the first eight measures. A dotted quarter note on the second line is positioned at the end of the staff.

A bass clef staff with ten eighth notes, each with a flat symbol (b) before it, positioned below the staff.

A bass clef staff with ten eighth notes, each with a flat symbol (b) before it, positioned below the staff.



A musical staff with a bass clef on the left. Ten downward-pointing arrows are positioned above the staff, each centered over a bass clef symbol. Below the staff, ten bass clef symbols are arranged horizontally, each corresponding to an arrow above it.

A musical staff with a bass clef on the left. Ten downward-pointing arrows are positioned above the staff, each centered over a bass clef symbol. Below the staff, ten bass clef symbols are arranged horizontally, each corresponding to an arrow above it.

A musical staff with a bass clef on the left. Three downward-pointing arrows are positioned above the staff, each centered over a bass clef symbol. Below the staff, three bass clef symbols are arranged horizontally, each corresponding to an arrow above it. To the right of the third bass clef, there is a square symbol with a dot inside, positioned above a short horizontal line segment.