

alle allein
für blechbläser
for brass-ensemble

eva-maria houben

2002

alle allein
für blechbläser
for brass-ensemble

eva-maria houben
2002

fünf bis sieben spieler.

das stück dauert vierzig minuten: zwei zeitabschnitte von jeweils zwanzig minuten.

im ersten spielen alle gleichzeitig (unabhängig voneinander) ihre stimme, im zweiten spielt einer allein seine stimme noch einmal.

jeder spieler: 60 klänge.

insgesamt leise.

klänge sind:

sehr kurz = •

weder kurz noch lang (mittellang) = —

so lang wie möglich (auf einem atem) = —————

(sich) zeit lassen zwischen den klängen.

five up to seven players.

the piece lasts forty minutes: two time-sections of twenty minutes in each case.

during the first section all players play simultaneously (independently), during the second section only one of them repeats his part.

each player: 60 sounds.

on the whole soft.

sounds are:

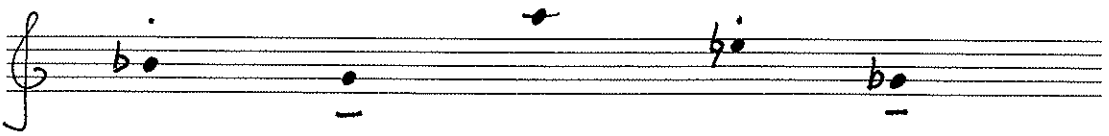
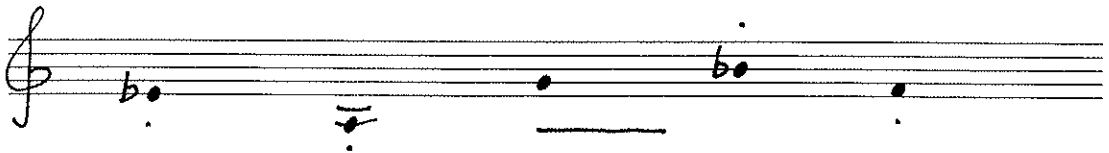
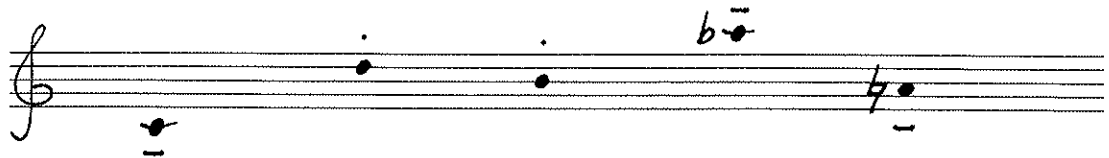
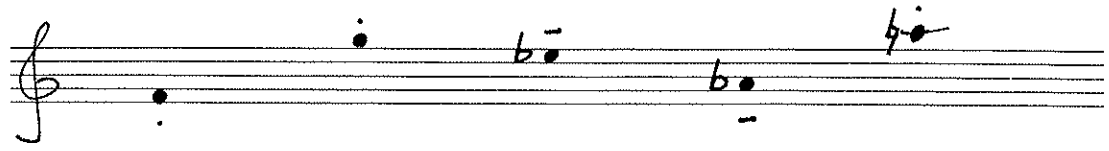
very short = •

neither short nor really long = —

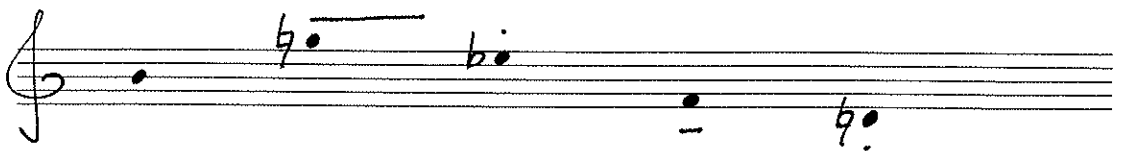
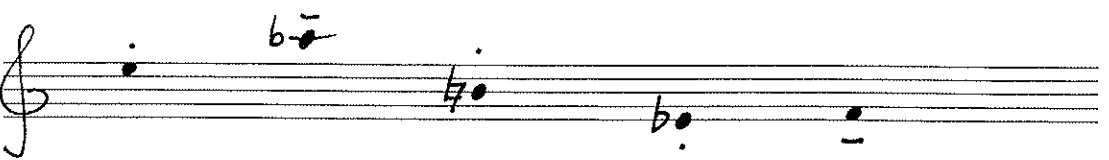
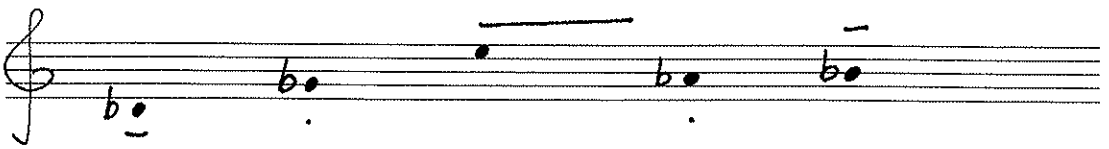
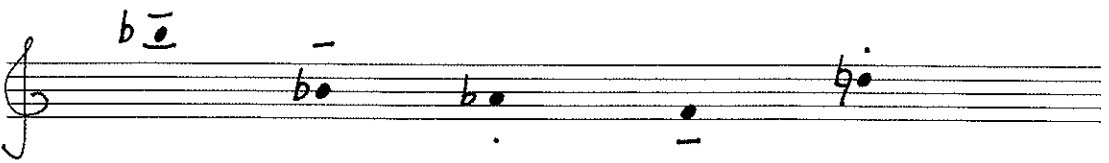
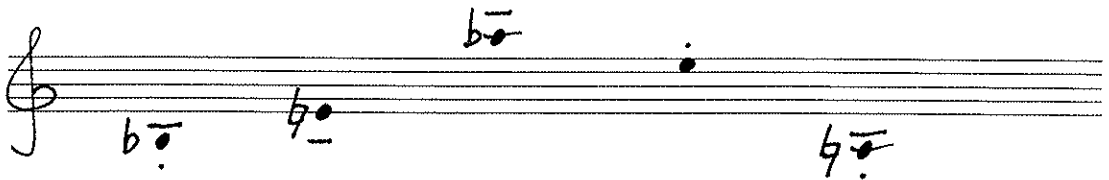
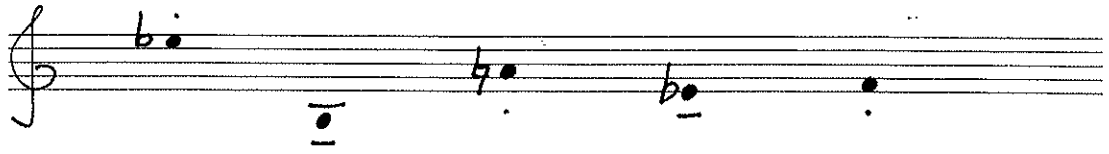
as long as possible (one breath) = —————

take up time strolling from sound to sound.

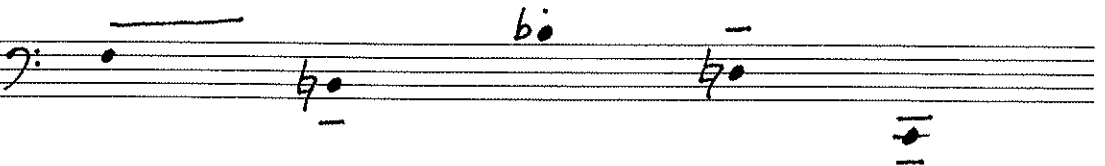
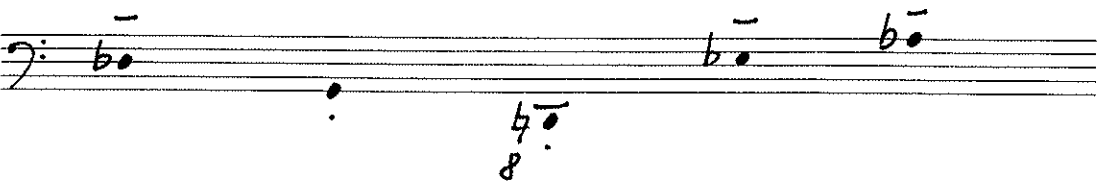
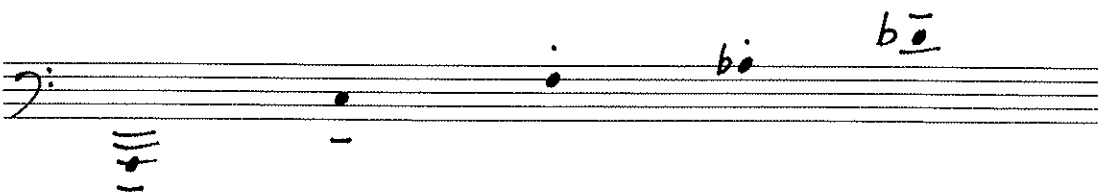
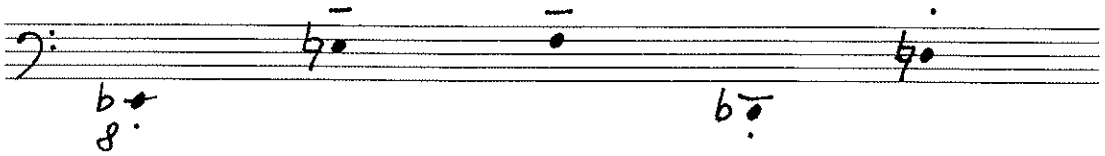
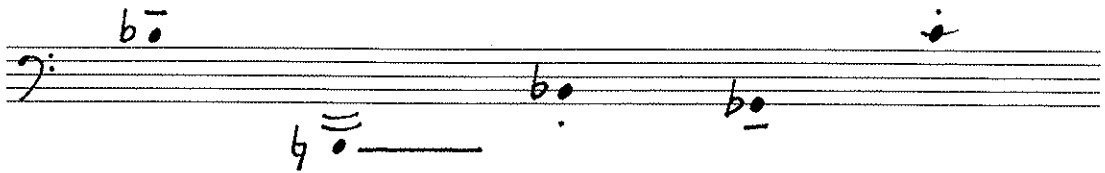
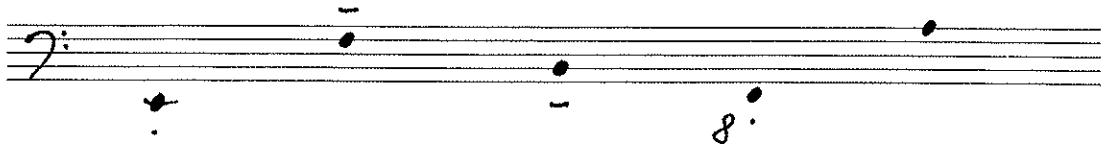
Trompete



trompete



Suba



tuba

Handwritten musical notation for tuba, first system. The staff is a bass clef. It contains two notes: a dotted quarter note on the second line (G2) with an '8' below it, and a dotted quarter note on the second space (Bb2) with a 'b' and '8' below it. A horizontal line is drawn above the staff, starting from the second space and extending to the right.

Handwritten musical notation for tuba, second system. The staff is a bass clef. It contains four notes: a dotted quarter note on the first space (F2) with a horizontal line below it, a dotted quarter note on the second space (Bb2), a dotted quarter note on the second line (G2), and a dotted quarter note on the second space (Bb2) with a horizontal line above it.

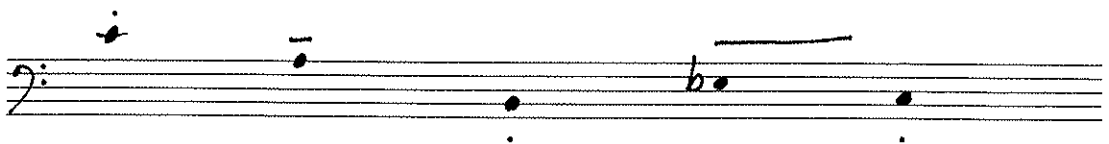
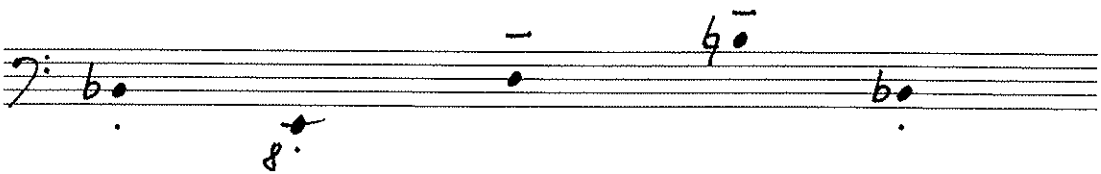
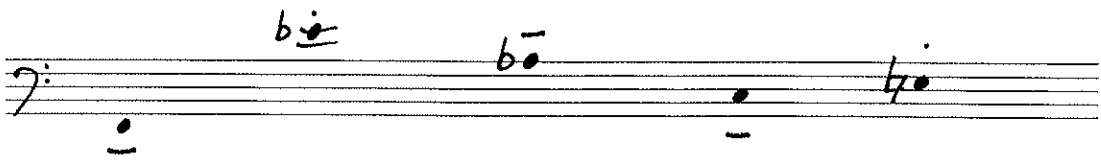
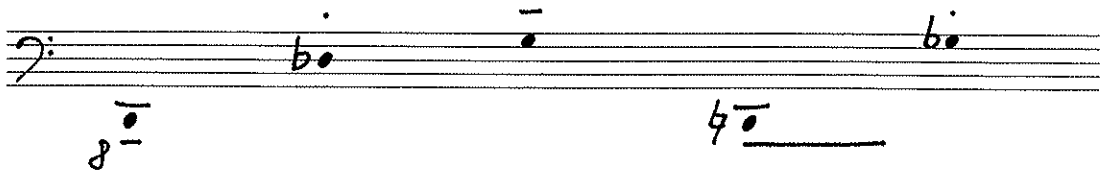
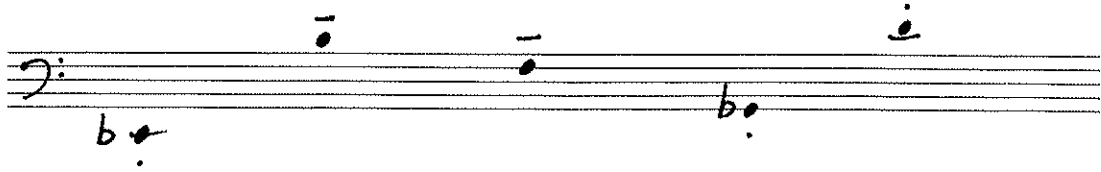
Handwritten musical notation for tuba, third system. The staff is a bass clef. It contains five notes: a dotted quarter note on the first space (F2), a dotted quarter note on the second space (Bb2) with a horizontal line above it, a dotted quarter note on the second line (G2) with a 'b' below it, a dotted quarter note on the second space (Bb2) with a 'b' below it, and a dotted quarter note on the first space (F2) with a horizontal line below it.

Handwritten musical notation for tuba, fourth system. The staff is a bass clef. It contains five notes: a dotted quarter note on the second space (Bb2) with an '8' below it, a dotted quarter note on the second space (Bb2) with a 'b' below it, a dotted quarter note on the second line (G2) with a 'b' below it, a dotted quarter note on the second space (Bb2) with a 'b' below it, and a dotted quarter note on the first space (F2) with a horizontal line below it.

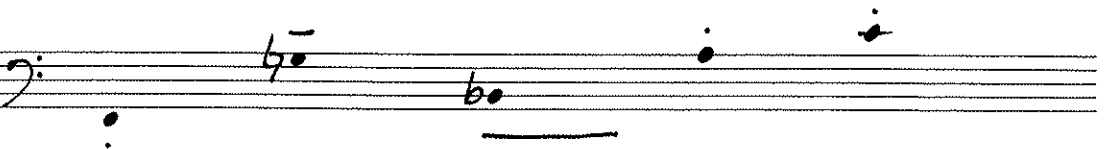
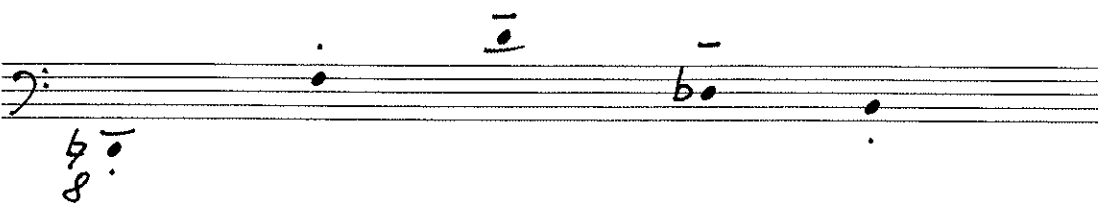
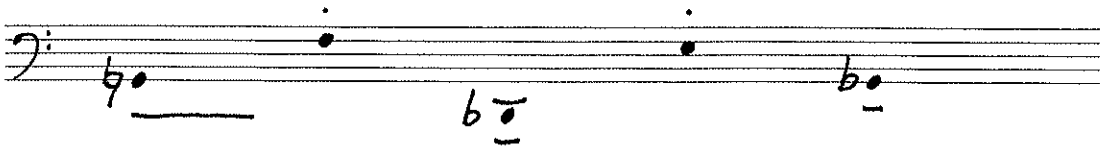
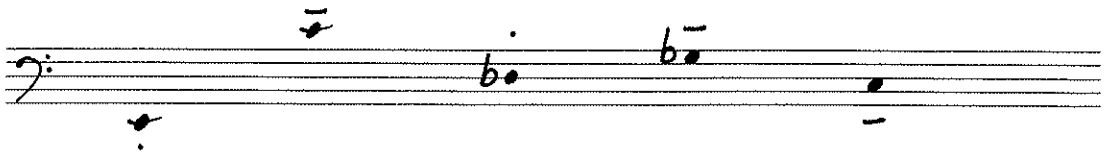
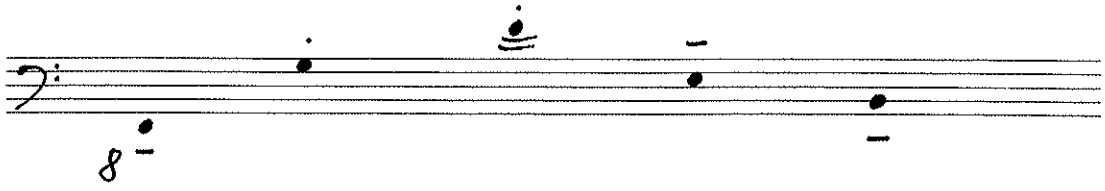
Handwritten musical notation for tuba, fifth system. The staff is a bass clef. It contains five notes: a dotted quarter note on the second space (Bb2) with a horizontal line above it, a dotted quarter note on the second space (Bb2) with a 'b' below it, a dotted quarter note on the second line (G2), a dotted quarter note on the second space (Bb2) with a horizontal line above it, and a dotted quarter note on the first space (F2).

Handwritten musical notation for tuba, sixth system. The staff is a bass clef. It contains five notes: a dotted quarter note on the first space (F2), a dotted quarter note on the second space (Bb2) with a 'b' below it, a dotted quarter note on the second line (G2) with a 'b' below it, a dotted quarter note on the second space (Bb2) with a 'b' below it, and a dotted quarter note on the first space (F2) with a horizontal line below it.

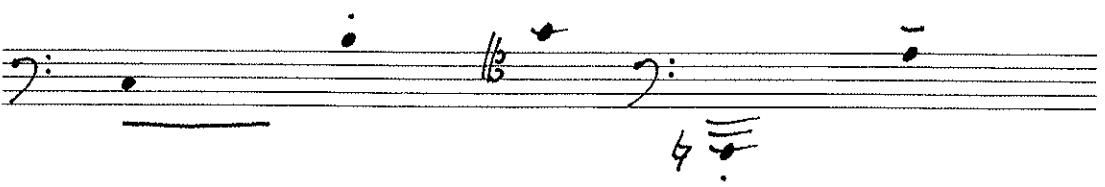
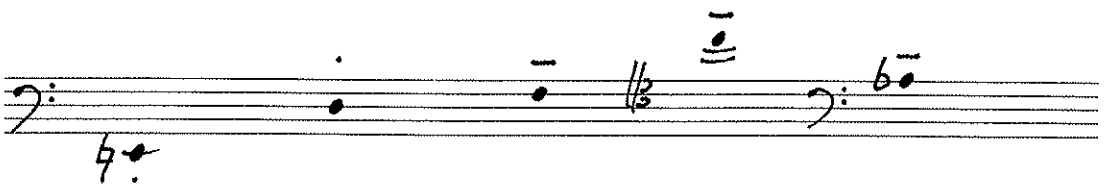
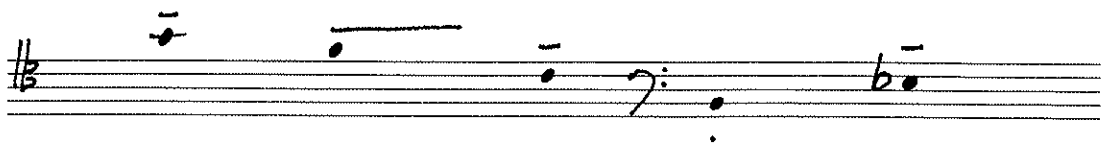
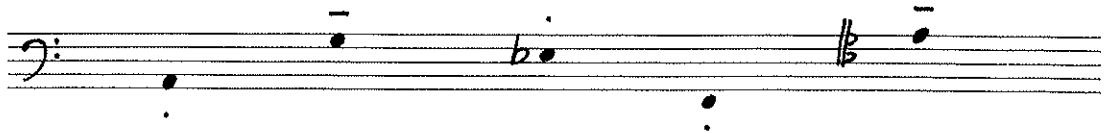
bassposanne



bassposaune



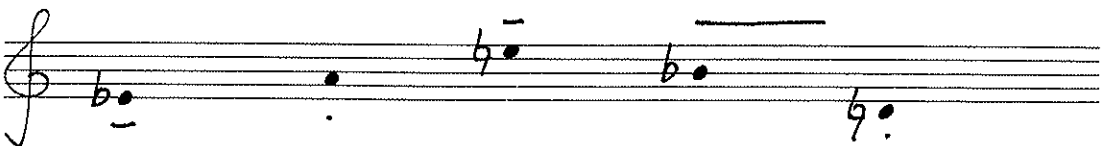
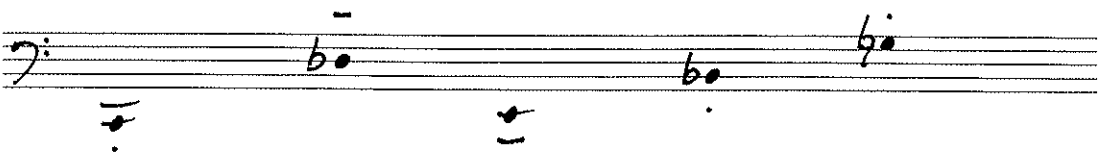
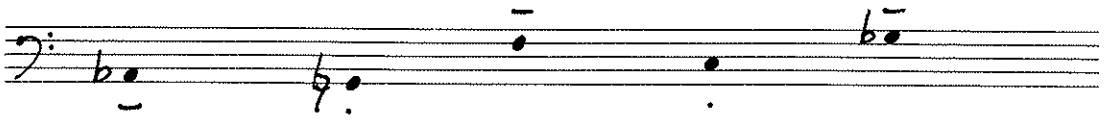
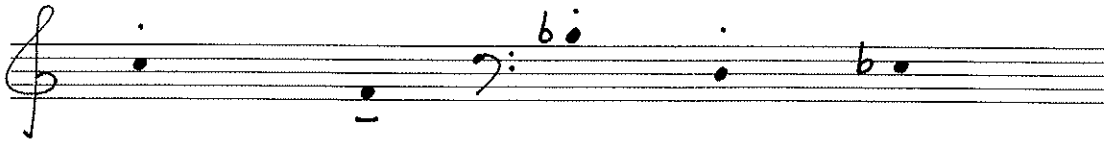
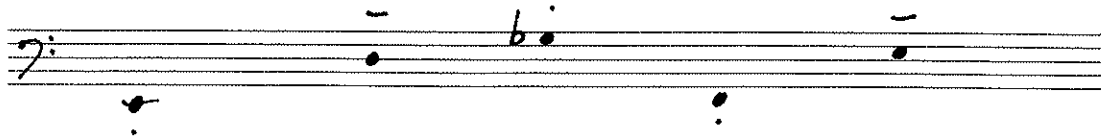
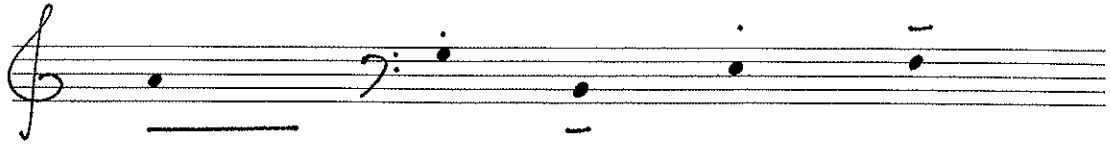
tenorposanne



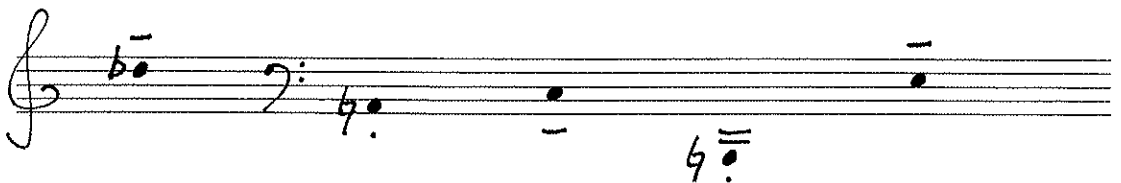
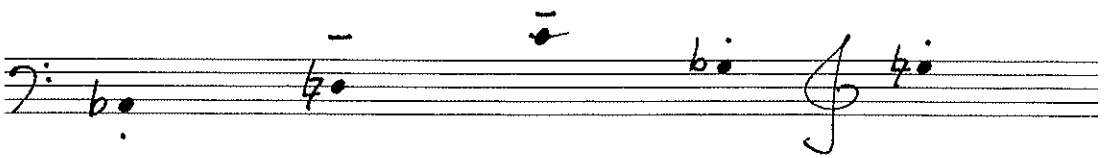
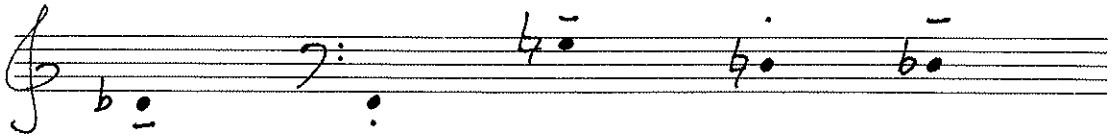
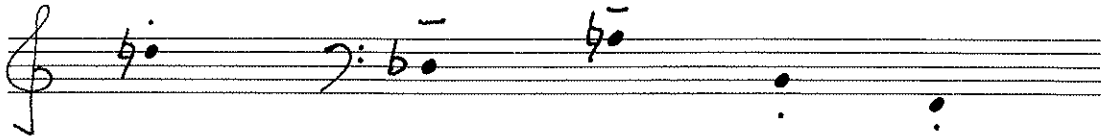
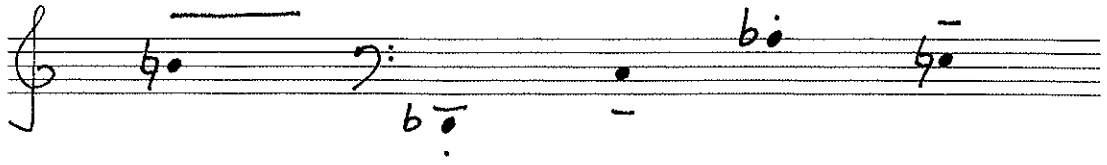
tenorposanne

The image shows a handwritten musical score for tenor saxophone, consisting of six staves. The notation includes various notes, rests, and clefs. The first staff begins with a bass clef and a key signature of one flat (B-flat). The notes are: B-flat (quarter note), B-flat (quarter note), a whole rest, a quarter rest, a quarter note, and a B-flat (quarter note). The second staff starts with a bass clef and a key signature of one flat. It contains a quarter note, a whole rest, a quarter note, a double bar line, a quarter note, and a B-flat (quarter note). The third staff begins with a bass clef and a key signature of one flat, featuring a quarter note, a B-flat (quarter note), a quarter note, a quarter note, and a quarter note. The fourth staff starts with a bass clef and a key signature of one flat, with notes: B-flat (quarter note), B-flat (quarter note), B-flat (quarter note), a quarter rest, and a B-flat (quarter note). The fifth staff begins with a bass clef and a key signature of one flat, containing a quarter note, a quarter note, a B-flat (quarter note), a quarter note, and a quarter note. The sixth staff starts with a bass clef and a key signature of one flat, with notes: a quarter note, a quarter note, a B-flat (quarter note), a B-flat (quarter note), and a quarter note.

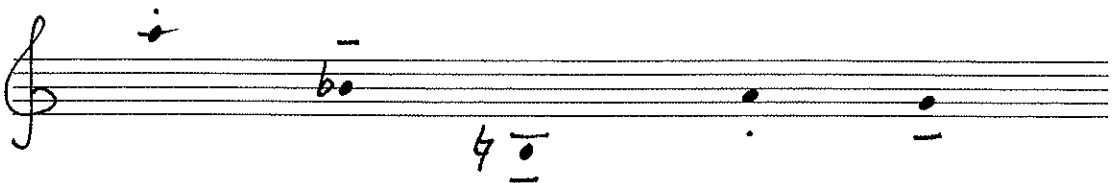
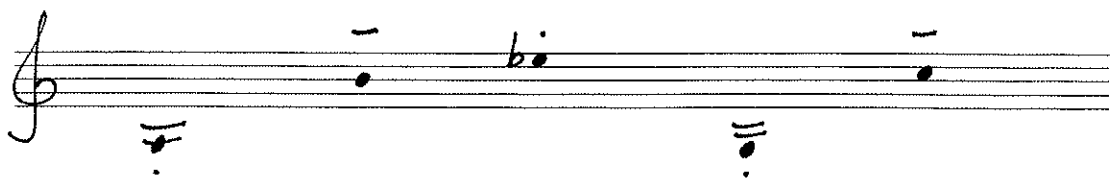
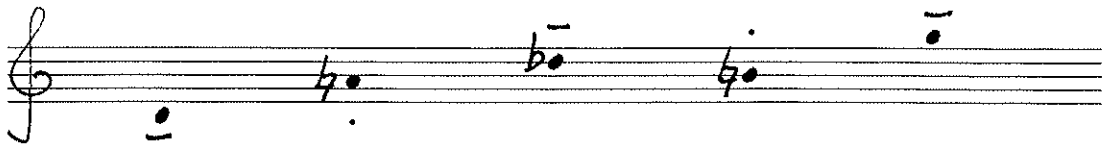
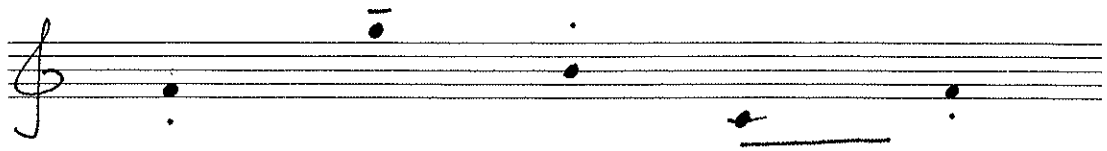
horn



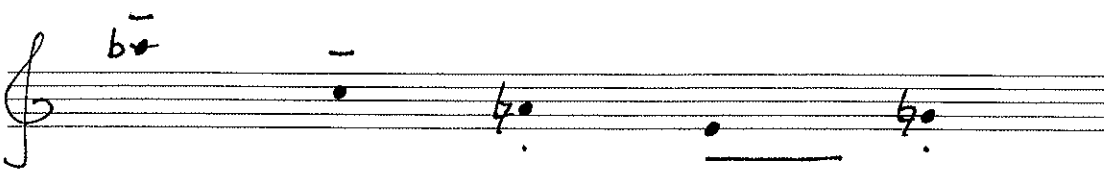
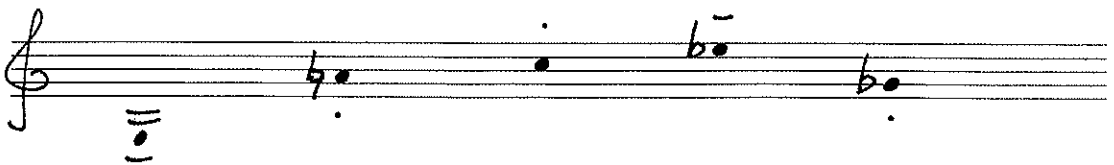
horn



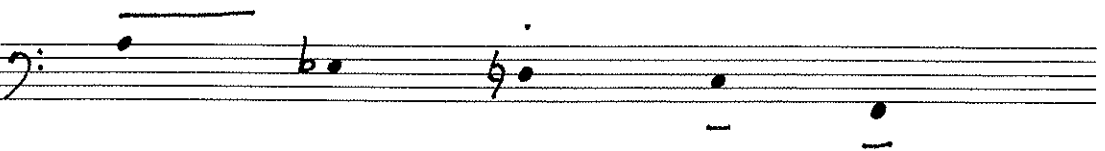
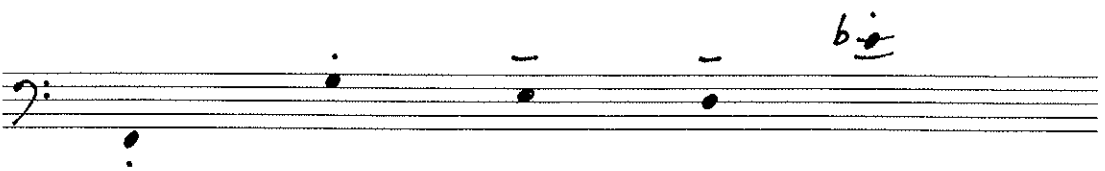
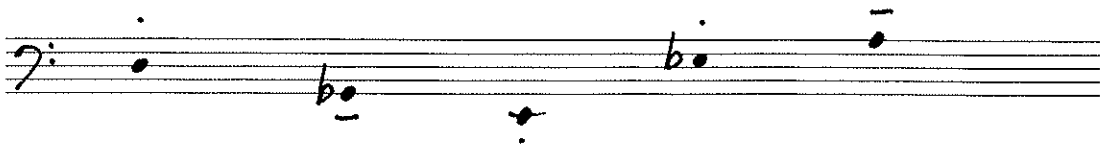
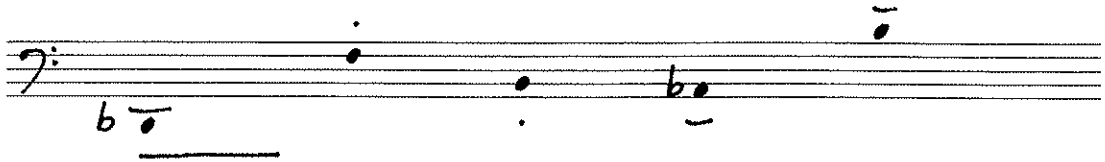
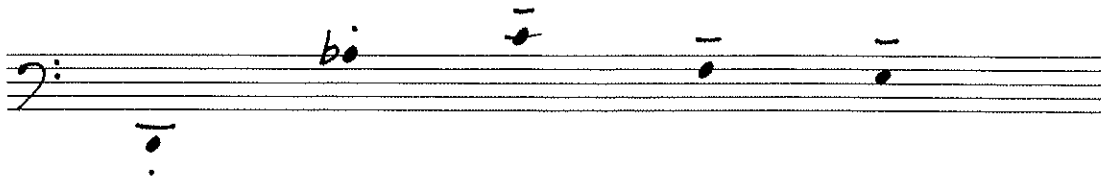
flügelhorn



flügelhorn



euphonium



euphonium

