

**keyboard music VII**  
for piano

eva-maria houben  
2002

keyboard music VII  
for piano

eva-maria houben  
2002

saiten präparieren, so dass ein (frei ausgewählter) teilton zu hören ist – oder auch mehrere hörbar werden:

C<sub>1</sub>: ein möglichst komplexer, glockenähnlicher klang mit hohen und tiefen bestandteilen.

D<sub>1</sub>: ein eher einfacher klang.

◆ : kurzer impuls, mp.

▶ : impuls-kette, die impulse immer langsamer werdend.

zeitabschnitte von einer minute. eine impuls-kette (11 impulse) bzw. zwei töne pro minute. die töne sind entweder eher kurz (●) oder eher lang (o), alle sind leise (p).

impuls-ketten und einzeltöne ohne pedal.

prepare the strings to make audible a freely chosen harmonic – or even several harmonics:

C<sub>1</sub>: a preferably complex sound like a bell with amounts of high and low partials.

D<sub>1</sub>: a rather simple sound.

◆ : a short impulse, mp.

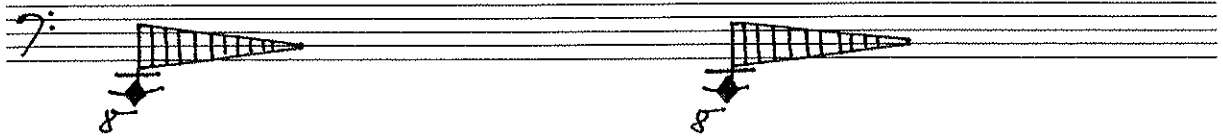
▶ : a pulse train; the impulses becoming slower and slower.

time sections of one minute. one pulse train or two sounds per minute. the sounds are either short (●) or rather long (o), all sounds are soft (p).

pulse trains and sounds without (right) pedal.

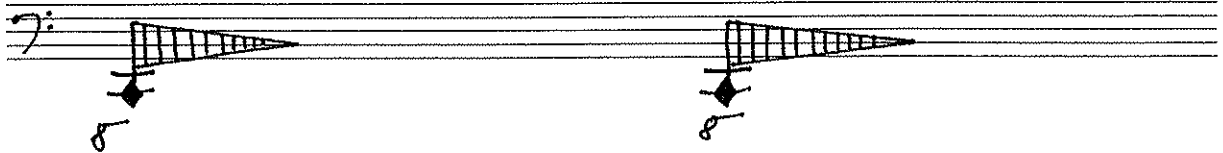
0:00

1:00



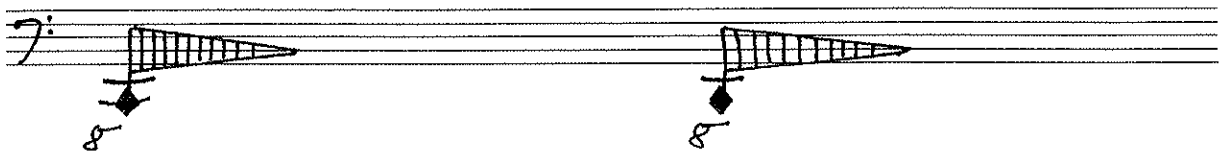
2:00

3:00



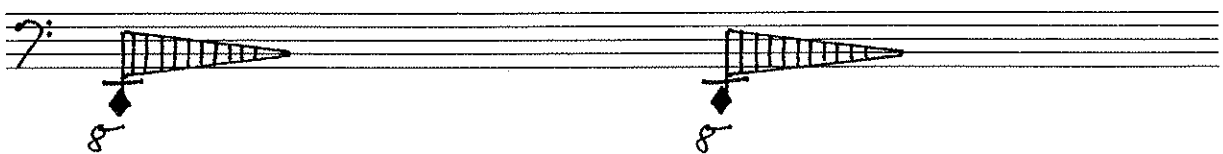
4:00

5:00



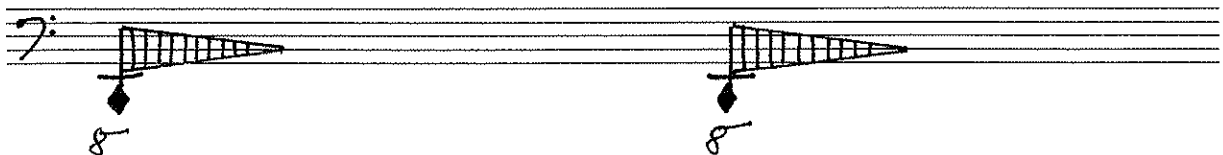
6:00

7:00



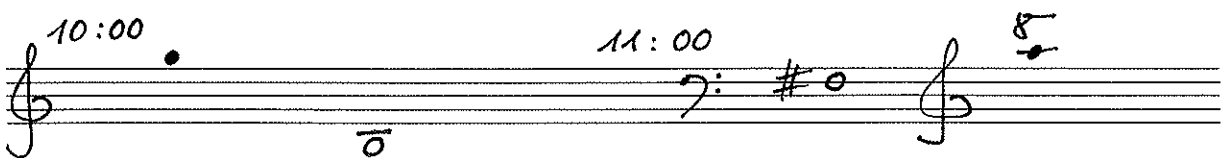
8:00

9:00



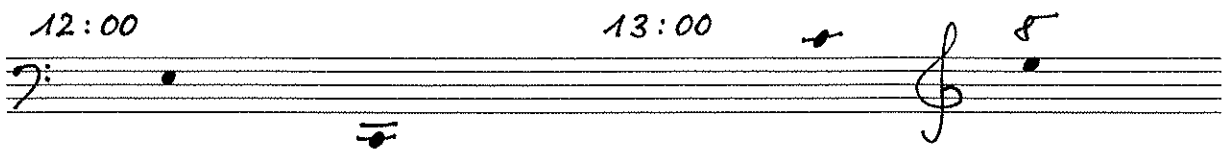
10:00

11:00



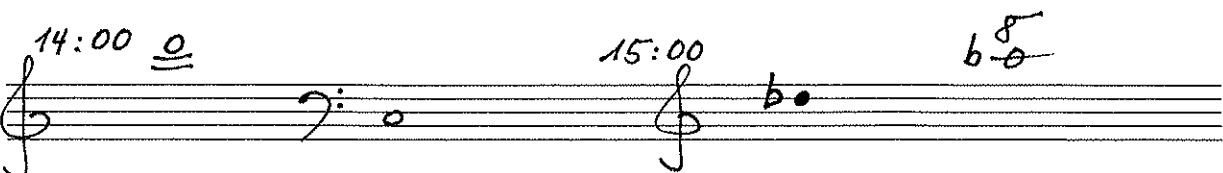
12:00

13:00



14:00

15:00



16:00 17:00

A musical staff with a treble clef. It contains three notes: a whole note  $b_0$  (below the staff), a whole note  $a_0$  (below the staff), and a whole note  $\#c_1$  (on the first line).

18:00 19:00

A musical staff with a bass clef. It contains two notes: a whole note  $a_0$  (below the staff) and a whole note  $b_0$  (below the staff).

20:00 21:00

A musical staff with a treble clef. It contains two notes: a whole note  $a_0$  (below the staff) and a whole note  $b_0$  (below the staff).

22:00 23:00

A musical staff with a treble clef. It contains two notes: a whole note  $\#c_1$  (on the first line) and a whole note  $d_1$  (on the first space).

24:00 25:00

A musical staff with a treble clef. It contains two notes: a whole note  $d_1$  (on the first space) and a whole note  $e_1$  (on the second line).

26:00 27:00

A musical staff with a bass clef. It contains two notes: a whole note  $e_1$  (on the first space) and a whole note  $f_1$  (on the second line).

28:00 29:00 [30:00]

A musical staff with a bass clef. It contains two notes: a whole note  $f_1$  (on the second line) and a whole note  $g_1$  (on the second space).