

dann

für grosse trommel und klarinette

for bass drum and clarinet

eva-maria houben

2002

dann
für grosse trommel und klarinette
for bass drum and clarinet

eva-maria houben
2002

zwei abschnitte (0:00 – 20:00 und 20:00 – 40:00 minuten):
im zweiten abschnitt spricht der spieler / die spielerin der trommel das wort „dann“, jeweils einmal in der angegebenen zeit. die klarinette spielt einmal den notierten klang in der angegebenen zeit. – das wort ist leise und klar zu sprechen. alle klarinettenklänge in zweiten abschnitt: eher lang, eine ruhige und lange ausatmung; dabei äußerst leise.

für b-klarinetten notiert.

aufführungen mit klarinetten in anderer stimmlage sind möglich. es ist dabei zu beachten, dass im ersten abschnitt des stückes ein tiefer (der tiefste) ton mit hohem geräuschanteil gewählt wird und im zweiten unterschiede zwischen abgedecktem und offenem ton hörbar sind. der letzte klang (im zweiten abschnitt) ist bei stark zurückgenommener lautstärke hörbar perforiert.

zum ersten abschnitt (0:00 bis 20:00 minuten):

- : der tiefste ton der b-klarinetten (e notiert, d klingend). kurz und akzentuiert, an ein perkussives geräusch erinnernd.

$t \rightarrow t$: zungenimpuls am anfang und am ende des klanges.

$t -$: zungenimpuls nur am anfang des klanges.

$- t$: zungenimpuls nur am ende des klanges.

$-$: nur zwerchfellimpuls, ohne zungenimpuls.

\square : abgedeckt. alle finger der rechten hand liegen auf den klappen bzw. löchern. fehlt dieses zeichen, so ist der klang offen zu greifen.

two sections (0:00 – 20:00 and 20:00 – 40:00 minutes):

during the second sections the player of the bass drum speaks:

“dann“ – at any time during the given time. the clarinet plays the given sound – once during the indicated time. – speak the word softly and clearly. all clarinet sounds in the second section: rather long, a quiet and long breath; extremely soft.

notated for clarinet in b flat.

performances with other clarinets (for example in a) are possible.

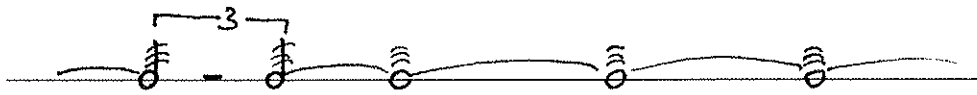
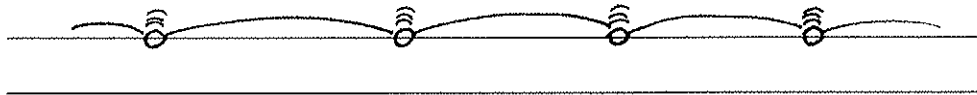
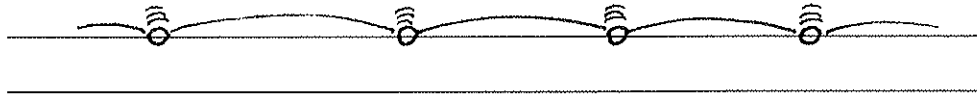
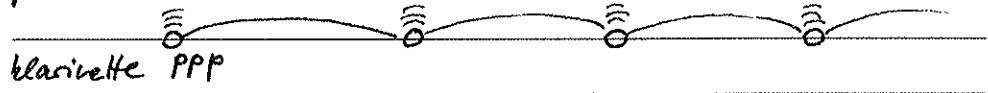
note that in the first section of the piece a deep (the deepest) tone with high admixtures of noise is chosen and that in the second section the difference between covered and uncovered tone is audible. the last sound (in the second section) is – being played very softly – audibly perforated.

first section (0:00 bis 20:00 minutes):

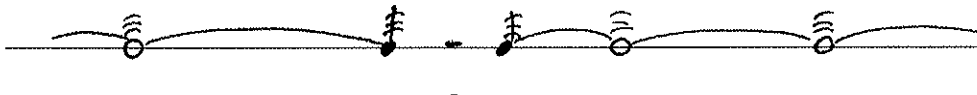
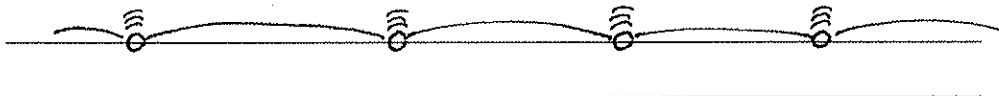

- : the lowest sound of the clarinet in b flat. short and accented, akzentuiert, commemorative of a percussion noise.
- $t - t$: impulse of the tongue at the beginning and at the end of the sound.
- $t -$: impulse of the tongue only at the beginning of the sound.
- $- t$: impulse of the tongue only at the end of the sound.
- $-$: only phrenic impuls, no tongue impulse.
- \neg : covered. the fingers of the right hand lay on the keys resp. on the holes. otherwise uncovered sound.

grosse trommel 2 = MM 50

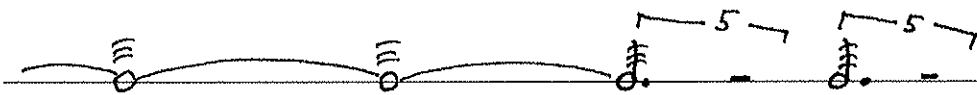
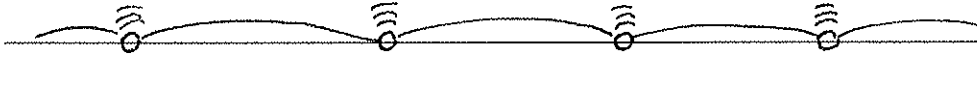
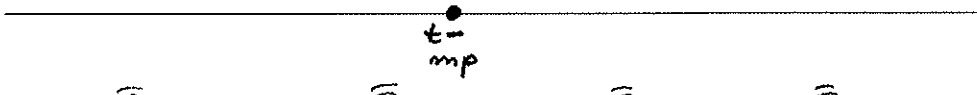
klarinette PPP



p

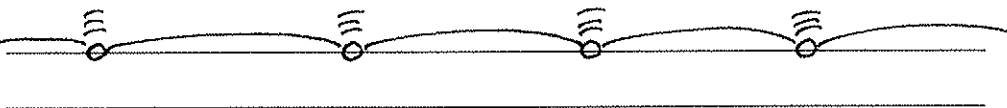
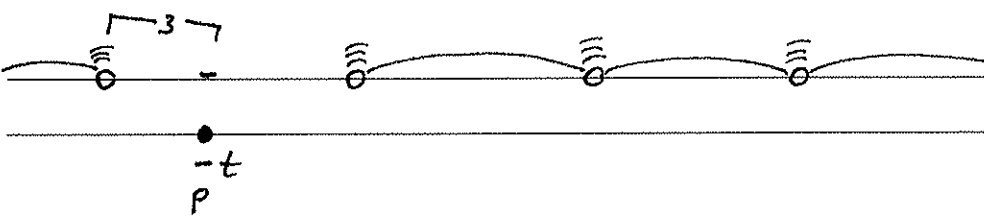
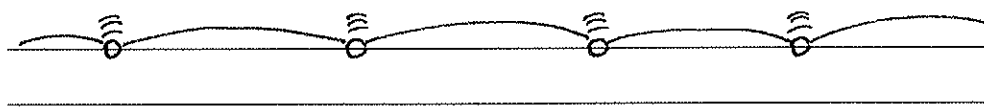
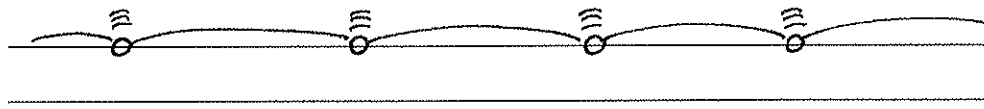
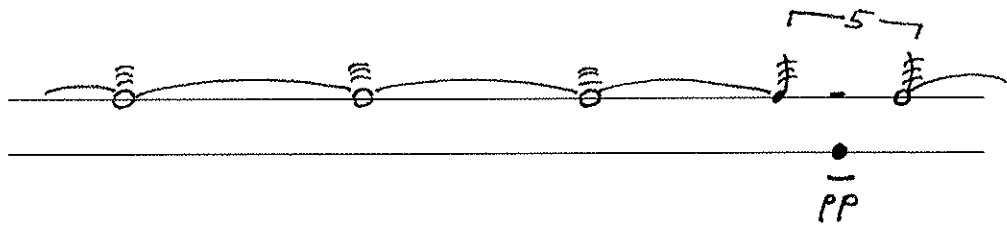
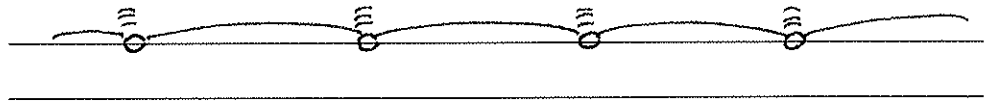
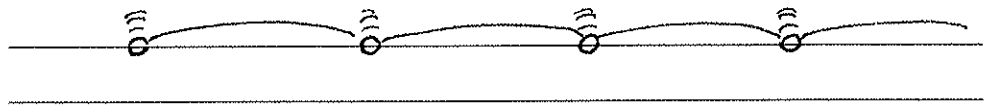


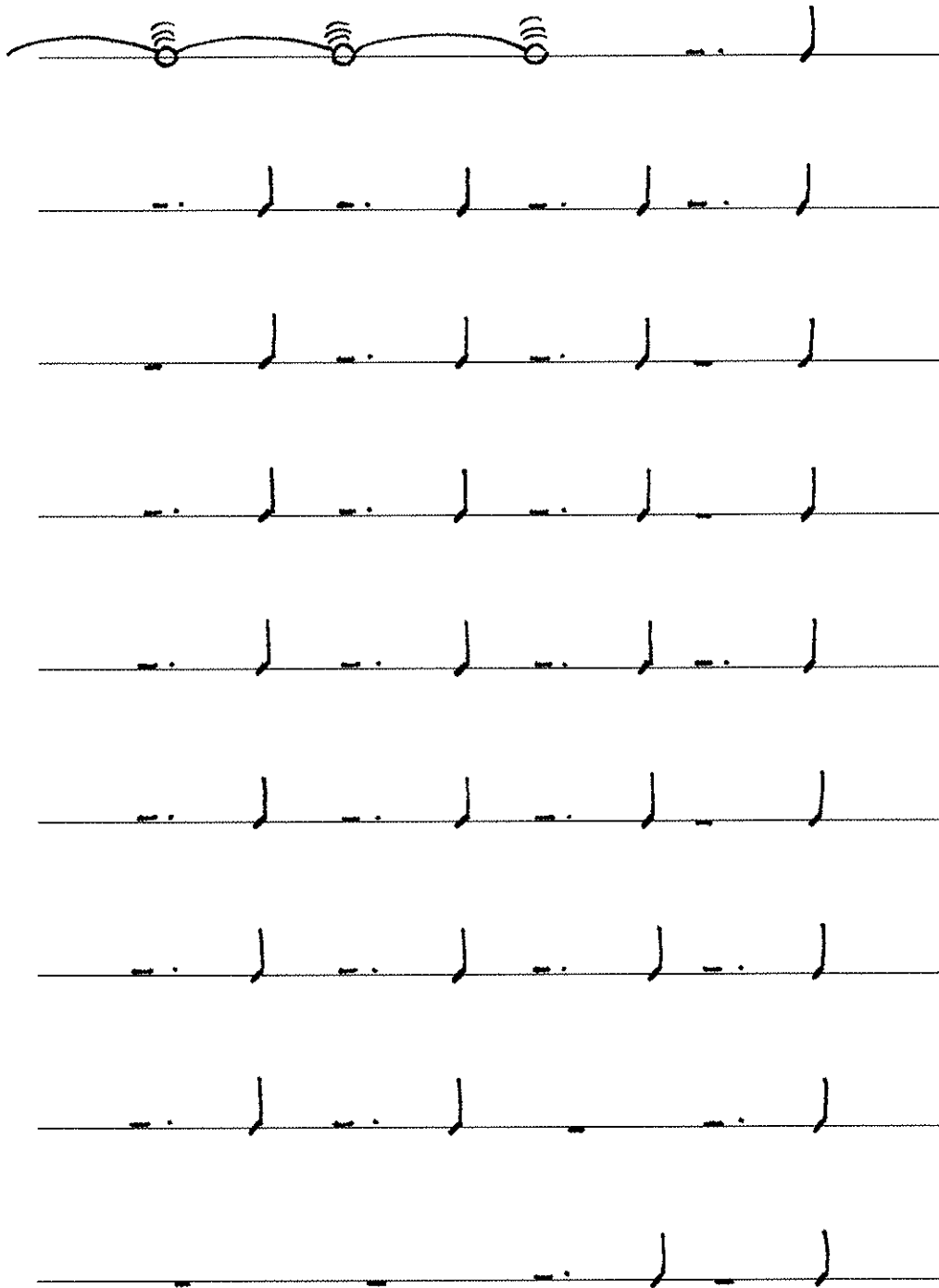
t-
mp

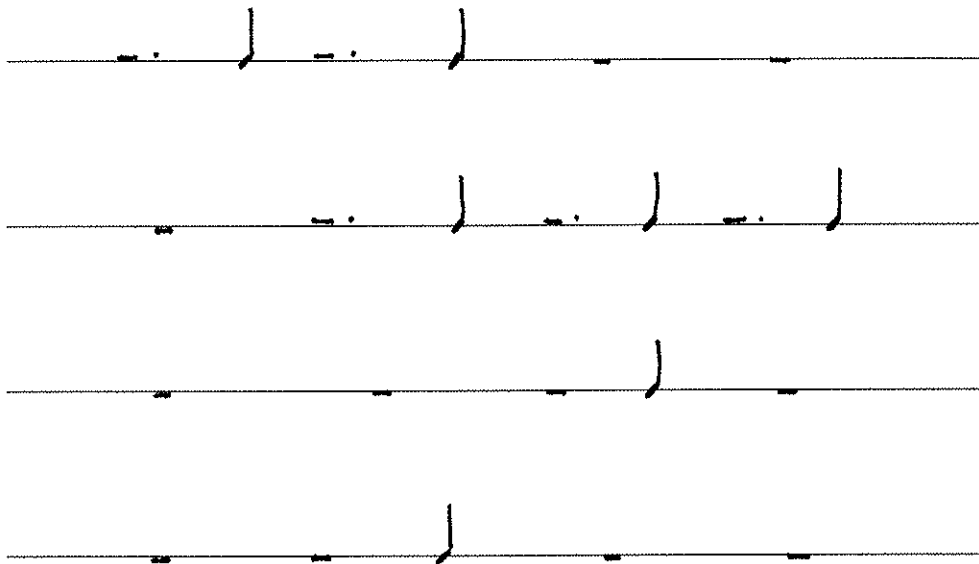


t-t
p

t-t
p







MM=60

! !
Klarinette

•	•	•	•	•	•	•	•	•	•	•	•
-	-	t-	-	-t	t-t	-	t-t	-t	-	t-	-
p	p	p	p	mp	mp	mp	mp	mp	p	p	p

•	•	•	•	•	•	•	•	•	•	•	•
-	t-	t-	-t	-	t-t	-	-	-t	-t	t-	-
p	pp	pp	pp	pp	pp	p	p	p	p	mp	mp

•	•	•	•	•	•	•	•	•	•	•	•
t-	t-t	-	t-	-	-t	t-t	-	-t	-	t-	-
mp	mp	mp	p	p	p	p	pp	pp	pp	pp	pp

•	•	•	•	•	•	•	•	•	•	•	•
-	-	-	-	t-	t-	t-	t-	t-	-	-	-
mp	p	p	pp	mp	p	mp	p	mp	mp	pp	p

• • • • • • • • • • • •
 - - -t -t -t -t - - - - - -
 p pp mp mp p pp pp p mp pp mp p

• • •
 - - -
 mp pp p

∩
 21"

• • • • • • • • • • • •
 t-t t-t t-t t-t -t -t -t -t -t - - -
 p mp mp pp p p mp p pp pp mp p

• • • • • • • • • • • •
 - - t- t- t- t- - - - - t-t t-t
 p mp pp mp p mp mp pp p pp p mp

• • • • • • • • • • • •
 t-t t-t t-t t- t- t- t- - - - -
 p p pp mp p mp pp p pp mp p p

┌──MM=30──┐
 • •

• • • • • •
 - t- - t-t - -t
 mp mp mp mp p p

• • • • • •
 t- - t-t - -t t-
 p p p mp mp mp

•	•	•	•	•	•
t-	-t	-	-	t-t	-t
mp	pp	pp	pp	pp	pp

•	•	•	•	•	•
-t	-t	-t	-t	-	-
mp	pp	p	p	mp	p

•	•	•	•	•	•
-	-	-	t-t	t-t	t-t
mp	pp	p	pp	mp	p

•	•
t-t	t-t
mp	pp

∩
34"

•	•	•	•	•	•
-t	-t	-t	-t	-	-
mp	p	p	pp	mp	pp

•	•	•	•	•
-	-	-	-	-
p	pp	mp	mp	p

$$\overbrace{\quad\quad\quad}^{\text{HM} = \frac{60}{5}}$$

grosse trommel

klarinette

•	•	•
-	-	-t
p	p	p
<hr/>		
•	•	•
-t	t-	t-t
p	mp	mp
<hr/>		
•	•	•
t-	-	t-
mp	mp	mp
<hr/>		
•	•	•
-	t-t	-t
p	p	p
<hr/>		
5 4	}	}
•	•	•
-	t-	t-
p	p	pp
<hr/>		
•	•	•
t-t	-t	-
pp	pp	pp
<hr/>		
•	•	•
-	t-	t-
p	p	p
<hr/>		
•	•	•
t-t	-t	-
p	mp	mp

5 3 1 1 3 1
4 2 PP

•	•	•
t-	-	-t
mp	mp	mp

•	•	•
t-t	t-	-
pp	pp	pp

•	•	•
-	-t	t-t
pp	pp	mp

•	•	•
t-	-	t-
mp	mp	mp

5 3 1 1 -
4 2 PP

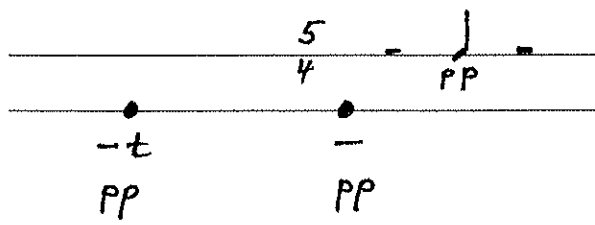
•	•	•
t-t	t-	-t
p	p	p

5 - 1 1 3
4 PP

•	•	•
t-	t-t	-
p	p	mp

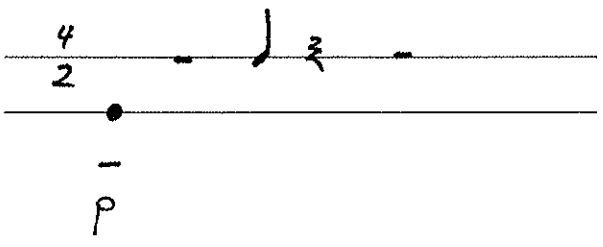
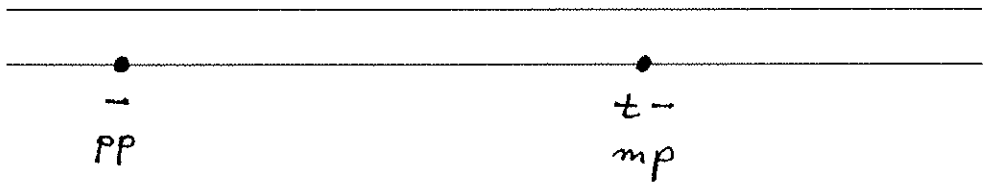
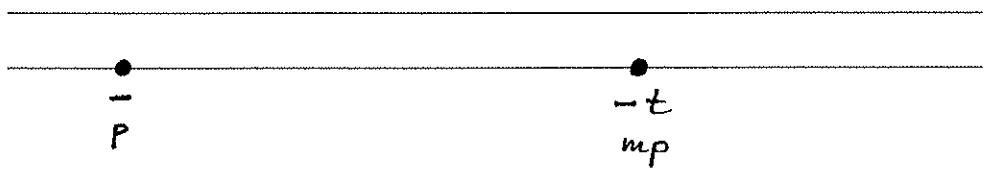
•	•	•
t-	-t	-
mp	mp	mp

•	•	•
-t	-t	t-t
pp	pp	pp



55''



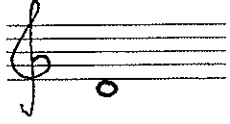

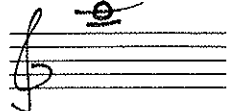
MM = $\frac{60}{8}$



grosse trommel

20:00	dann	21:00
22:00	dann	23:00
24:00	dann	25:00
26:00	dann	27:00
28:00	dann	29:00

klarinette

23:00		24:00
27:00		28:00
31:00		32:00
35:00		36:00
39:00		40:00