

# an diesem ort gehen wir weiter

10 instruments

eva-maria houben

© edition wandelweiser **2003**

catalogue number ew16.025

an diesem ort gehen wir weiter

10 ausführende

10 performers

eva-maria houben

2003

insgesamt leise (pp).

die besetzung ist frei. es gibt drei instrumente mit unbestimmten tonhöhen und sieben mit bestimmten tonhöhen. jeder ton kann in jedem schlüssel gelesen, jeder ton in verschiedene oktavlagen transponiert werden.

zeitabschnitte von 5 minuten.

12 abschnitte.

das stück dauert 60 minuten.

\* : anfang des klangs zu beginn des angegebenen zeitabschnitts.

| : ende des klangs am schluss des angegebenen zeitabschnitts.

← → : den klang (die klänge) innerhalb des angegebenen zeitabschnitts spielen.

unbestimmte tonhöhen:

- a) kontinuierliches reib-, schrap-, raschel-, klapper- rasselgeräusch (röhregehänge oder trockene blätter oder steine oder trommelfell oder holz...).
- b) tremolo.
- c) x: einzelne (kurze) anschläge.

bestimmte tonhöhen:

- : eher kurzer klang.
- : klang 2 bis 3 sekunden lang.
- : klang (auch viel) länger als 5 sekunden

soft (pp).

free instrumentation. there are three unpitched instruments and seven pitched ones.

there are no keys. any transpositions, any octaves.

sections of 5 minutes.

12 sections.

duration: 60 minutes.

\* : the sound begins at the beginning of the section.

| : the sound finishes at the end of the section.

← → : the sounds occur sometime during the section.

the unpitched instruments:

a) several noises – played continuously

(leaves, skin, wood and so on).

b) tremolo.

c) x: single (rather short) attacks.

the pitched instruments:

● : a rather short sound.

— : a sound with a duration of about 2 or 3 seconds.

———— : a sound (even much) longer than 5 seconds.

percussion 1 (unpitched)

each sound about 10".

0:00 ←

→ 1:00



1:00 ←

→ 2:00



2:00 ←

→ 3:00



3:00 ←

→ 4:00



4:00 ←

→ 5:00



percussion 1

5:00 ←

→ 6:00



6:00 ←

→ 7:00



7:00 ←

→ 8:00



8:00 ←

→ 9:00



9:00 ←

→ 10:00



percussion 1

10:00 ←

→ 11:00



11:00 ←

→ 12:00



12:00 ←

→ 13:00



13:00 ←

→ 14:00



14:00 ←

→ 15:00



percussion 1

15:00 ←

→ 16:00



16:00 ←

→ 17:00



17:00 ←

→ 18:00



18:00 ←

→ 19:00



19:00 ←

→ 20:00





percussion 1

20:00 ←

→ 21:00



21:00 ←

→ 22:00



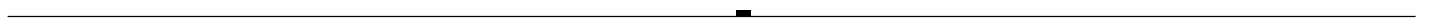
22:00 ←

→ 23:00



23:00 ←

→ 24:00



24:00 ←

→ 25:00



percussion 1

25:00 ←

→ 26:00



26:00 ←

→ 27:00



27:00 ←

→ 28:00



28:00 ←

→ 29:00



29:00 ←

→ 30:00



percussion 1

30:00 ←

→ 31:00



31:00 ←

→ 32:00



32:00 ←

→ 33:00



33:00 ←

→ 34:00



34:00 ←

→ 35:00



percussion 1

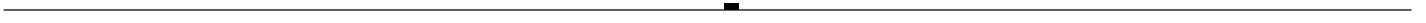
35:00 ←

→ 36:00



36:00 ←

→ 37:00



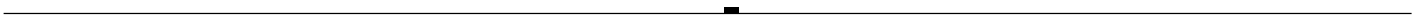
37:00 ←

→ 38:00



38:00 ←

→ 39:00



39:00 ←

→ 40:00



percussion 1

40:00 ←

→ 41:00



41:00 ←

→ 42:00



42:00 ←

→ 43:00



43:00 ←

→ 44:00



44:00 ←

→ 45:00



percussion 1

45:00 ←

→ 46:00



46:00 ←

→ 47:00



47:00 ←

→ 48:00



48:00 ←

→ 49:00



49:00 ←

→ 50:00



percussion 1

50:00 ←

→ 51:00



51:00 ←

→ 52:00



52:00 ←

→ 53:00



53:00 ←

→ 54:00



54:00 ←

→ 55:00



percussion 1

55:00 ←

→ 56:00



56:00 ←

→ 57:00



57:00 ←

→ 58:00



58:00 ←

→ 59:00



59:00 ←

→ 60:00





## percussion 2 (unpitched)

different durations of the tremoli: 5", 10", 30".

0:00 1:00



A horizontal line representing a musical staff. At the beginning, there is a small circle with a vertical line through it. Above this circle is a vertical stack of five slanted bars, followed by a starburst symbol and the letters "tr". Below the circle, the number "5" is written, indicating a 5-second duration. The time "0:00" is written at the start and "1:00" at the end of the line.

1:00 2:00



A horizontal line representing a musical staff. At the beginning, there is a small circle with a vertical line through it. Above this circle is a vertical stack of five slanted bars, followed by a starburst symbol and the letters "tr". Below the circle, the number "10" is written, indicating a 10-second duration. The time "1:00" is written at the start and "2:00" at the end of the line.

2:00 3:00



A horizontal line representing a musical staff. At the beginning, there is a small circle with a vertical line through it. Above this circle is a vertical stack of five slanted bars, followed by a starburst symbol and the letters "tr". Below the circle, the number "5" is written, indicating a 5-second duration. The time "2:00" is written at the start and "3:00" at the end of the line.

3:00 4:00



A horizontal line representing a musical staff. At the beginning, there is a small circle with a vertical line through it. Above this circle is a vertical stack of five slanted bars, followed by a starburst symbol and the letters "tr". Below the circle, the number "30" is written, indicating a 30-second duration. The time "3:00" is written at the start and "4:00" at the end of the line.

4:00 5:00

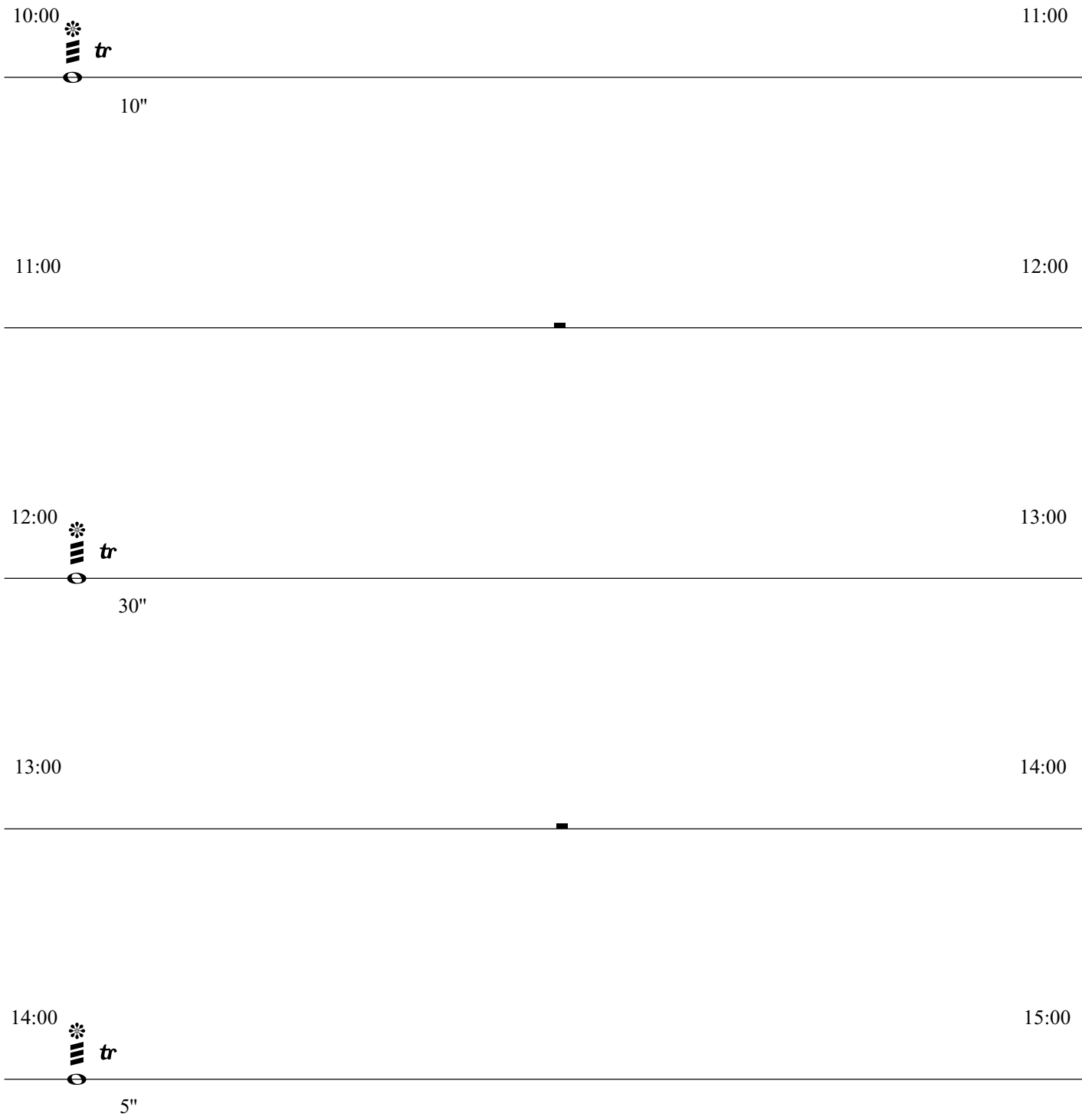


A horizontal line representing a musical staff. At the beginning, there is a small circle with a vertical line through it. Above this circle is a vertical stack of five slanted bars, followed by a starburst symbol and the letters "tr". Below the circle, the number "5" is written, indicating a 5-second duration. The time "4:00" is written at the start and "5:00" at the end of the line.

percussion 2



percussion 2



percussion 2

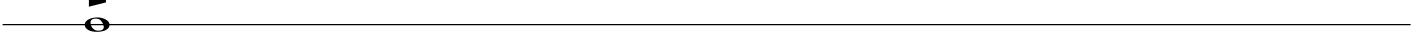
15:00

16:00



16:00

17:00



**tr**  
**0**

10"

17:00

18:00



18:00

19:00



19:00

20:00



**tr**  
**0**

30"

20:00

21:00



21:00

22:00



22:00

23:00



23:00

24:00



10"

24:00

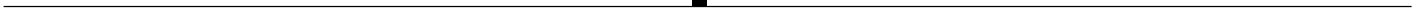
25:00



percussion 2

25:00

26:00



26:00

27:00



27:00

28:00



28:00

29:00



29:00

30:00



30:00

31:00



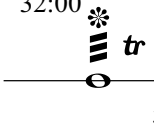
31:00

32:00



32:00

33:00



5"



33:00

34:00



34:00

35:00



percussion 2

35:00  *tr* 36:00

---

5"


36:00 37:00

---



37:00 38:00

---



38:00  *tr* 39:00

---

30"

39:00 40:00

---





40:00

41:00



41:00

42:00



*tr*

5"



42:00

43:00



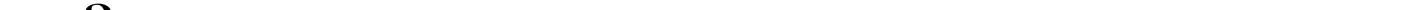
43:00

44:00



*tr*

10"



44:00

45:00



*tr*

10"



percussion 2

45:00

46:00



46:00

47:00



47:00

48:00



48:00

49:00



49:00

50:00



percussion 2

50:00  *tr* 51:00

---

10"

51:00  *tr* 52:00

---

5"

52:00  *tr* 53:00

---

5"

53:00  *tr* 54:00

---

30"

54:00  *tr* 55:00

---

5"

percussion 2

55:00  *tr*  
10" 56:00

---

56:00  *tr*  
10" 57:00

---

57:00  *tr*  
10" 58:00

---

58:00  *tr*  
30" 59:00

---

59:00  *tr*  
5" 60:00

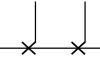
---

percussion 3 (unpitched)

♩ = MM 60

0:00

0:58 1:00



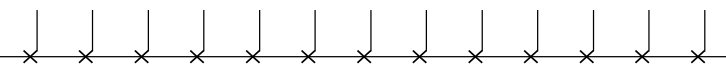
1:00

1:55 2:00



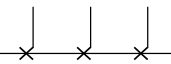
2:00

2:47 3:00



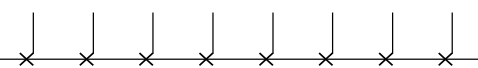
3:00

3:57 4:00



4:00

4:52 5:00



percussion 3

5:00

5:55

6:00



6:00

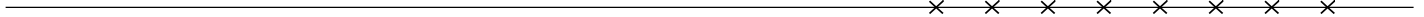
7:00



7:00

7:52

8:00



8:00

8:58

9:00



9:00

9:52

10:00



percussion 3

10:00

11:00



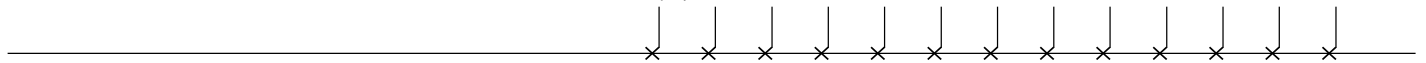
11:00

11:58 12:00



12:00

12:47 13:00



13:00

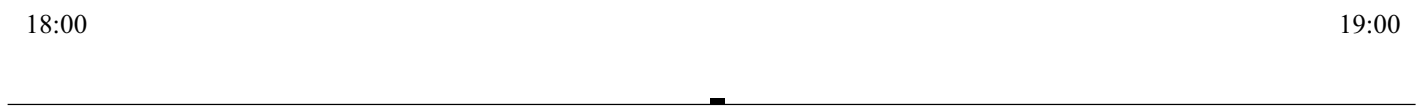
13:55 14:00



14:00

15:00







20:00

21:00



21:00

22:00



22:00

22:47

23:00



23:00

24:00



24:00

25:00



25:00

26:00



26:00

27:00



27:00

28:00



28:00

29:00



29:00

30:00



30:00

31:00



31:00

31:52

32:00



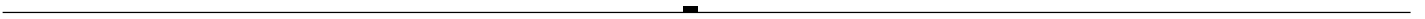
32:00

33:00



33:00

34:00



34:00

35:00



percussion 3

35:00

36:00



36:00

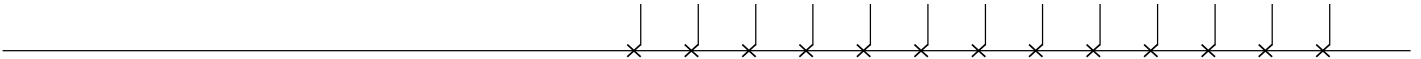
36:58 37:00



37:00

37:47

38:00



38:00

39:00



39:00

40:00

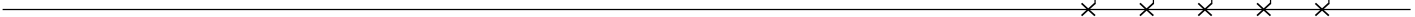


percussion 3

40:00

40:55

41:00



41:00

42:00



42:00

42:52

43:00



43:00

43:57

44:00



44:00

45:00



45:00

45:55

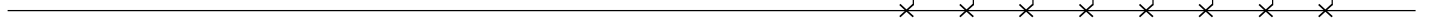
46:00



46:00

46:52

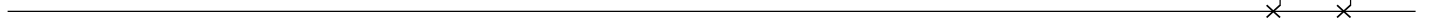
47:00



47:00

47:58

48:00



48:00

49:00



49:00

49:47

50:00



50:00

50:52

51:00



51:00

51:57

52:00



52:00

52:55

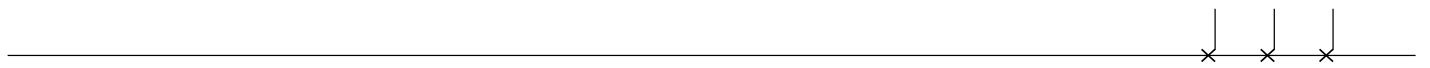
53:00



53:00

53:57

54:00



54:00

54:52

55:00



55:00

55:52

56:00



56:00

56:58

57:00



57:00

57:55

58:00



58:00

58:47

59:00



59:00

59:52

60:00



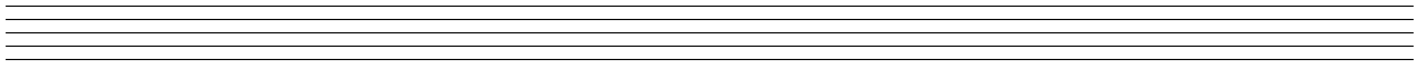


itches 1

[0:00]

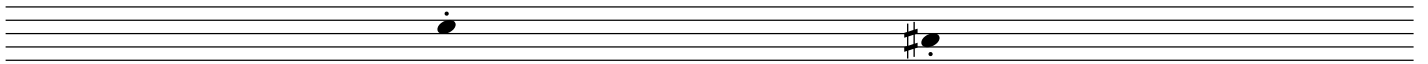
0:34

1:03



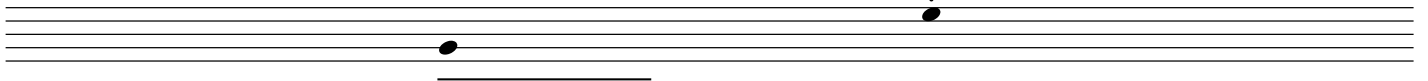
1:57

2:11



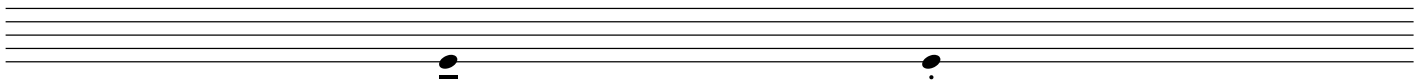
2:27

3:18



3:22

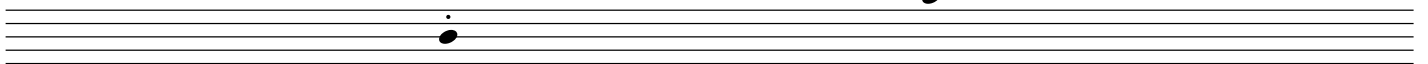
3:48



4:21

4:50

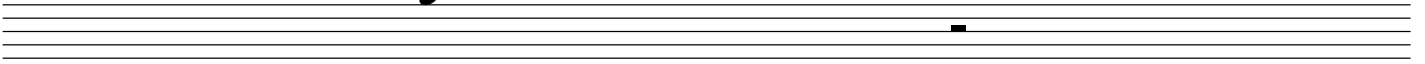
[5:00]



1

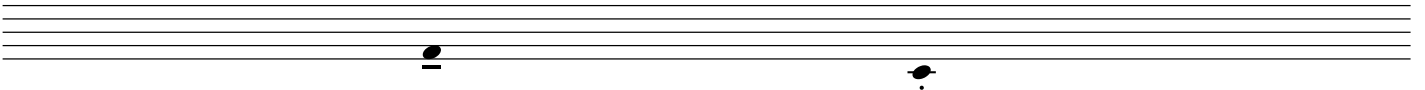
[5:00]

5:03



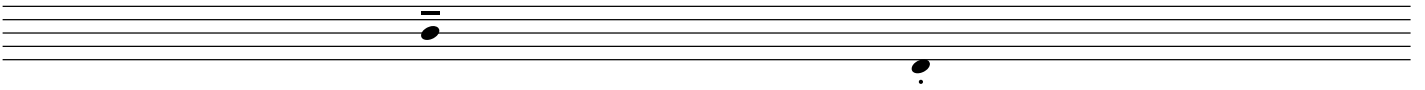
6:34

7:05

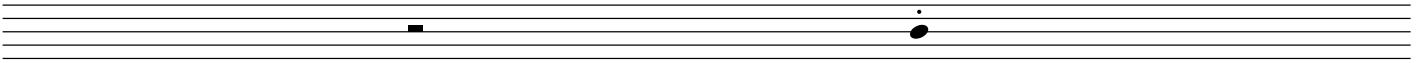


7:28

7:56



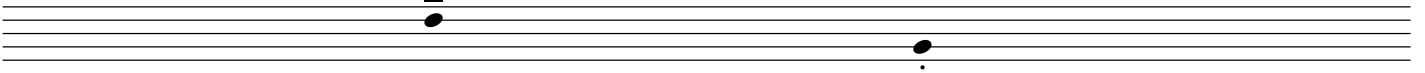
8:45



[10:00]

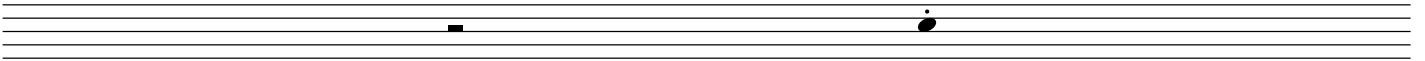
9:00

9:32



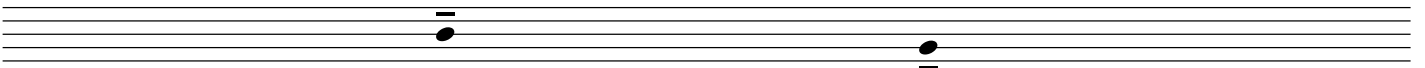
[10:00]

11:10

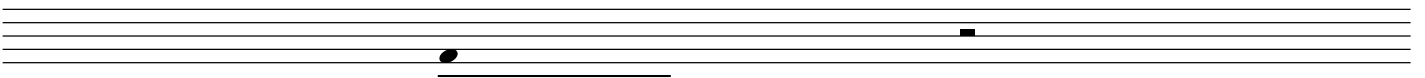


11:30

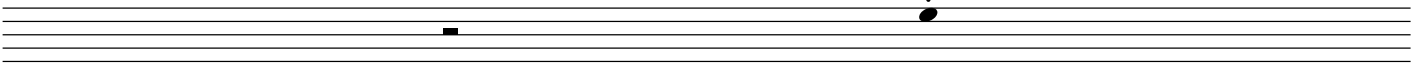
11:49



12:18

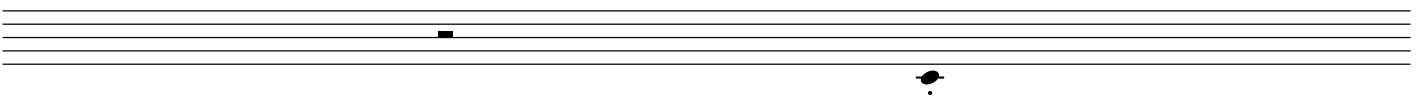


13:46

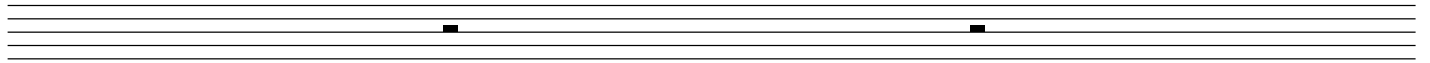


[15:00]

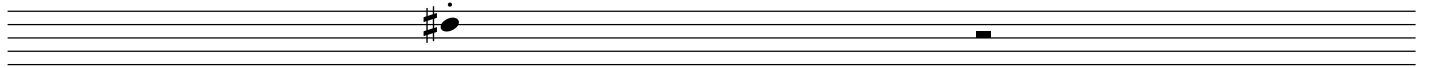
14:21



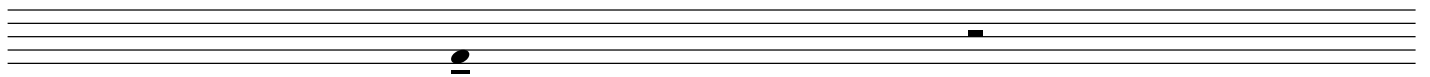
[15:00]



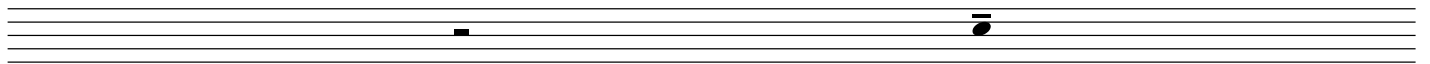
16:20



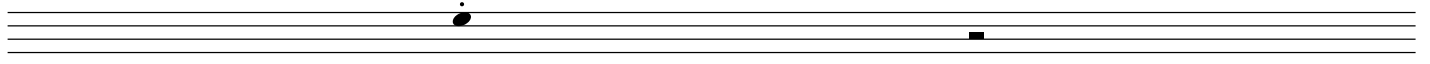
16:56



18:47

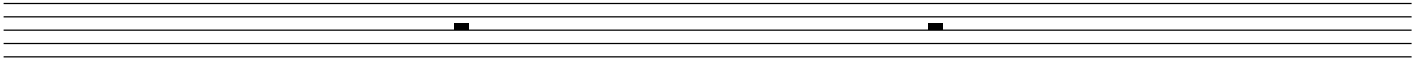


19:02

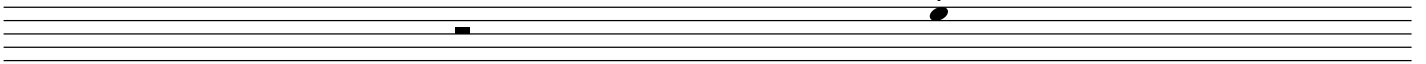


[20:00]

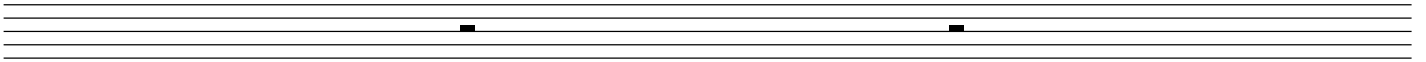
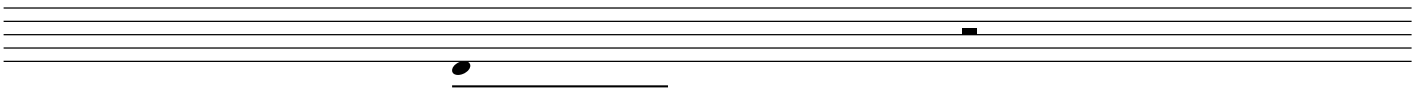
[20:00]



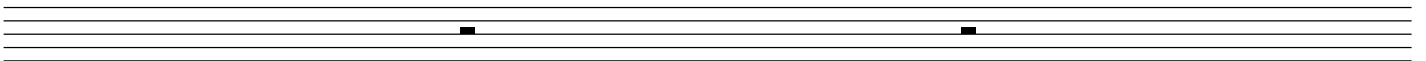
21:57



22:06

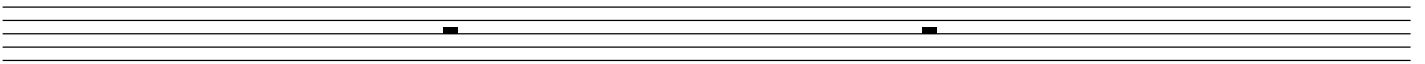
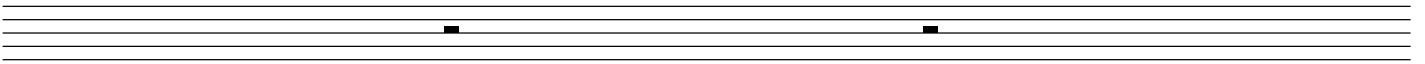
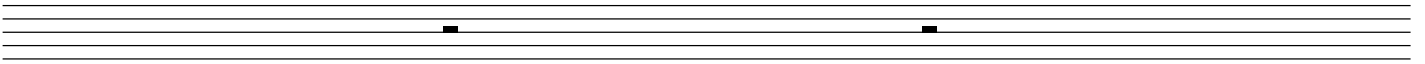
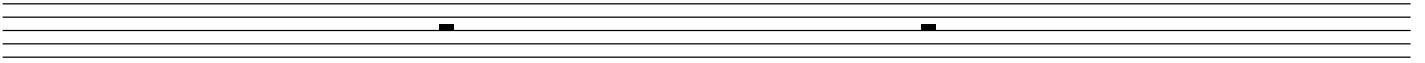


[25:00]

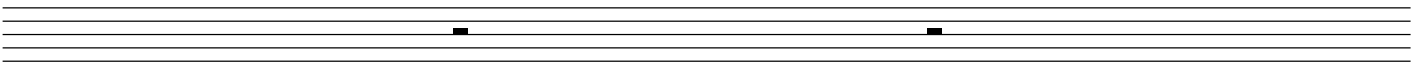


1

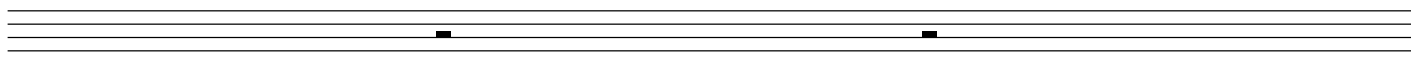
[25:00]



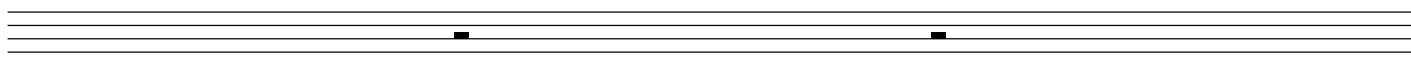
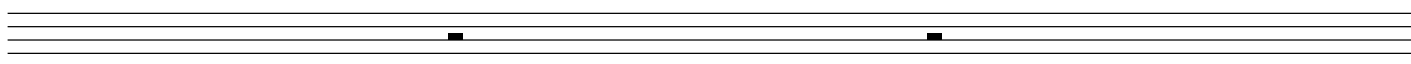
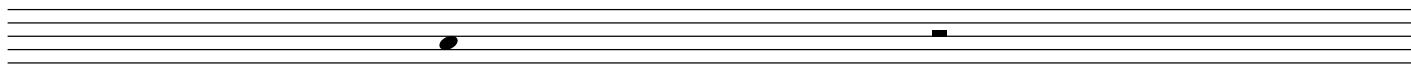
[30:00]



[30:00]

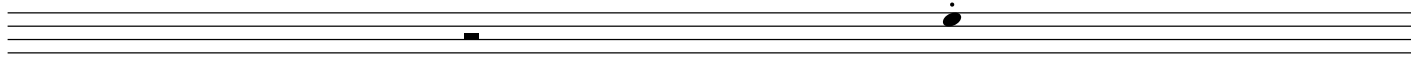


31:09

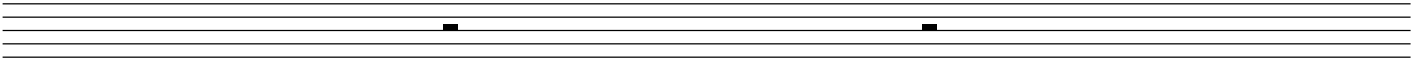


[35:00]

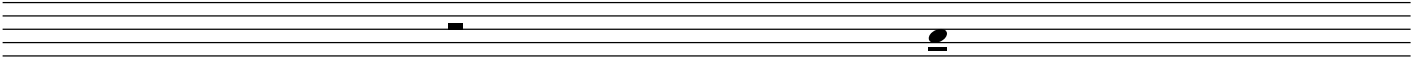
34:49



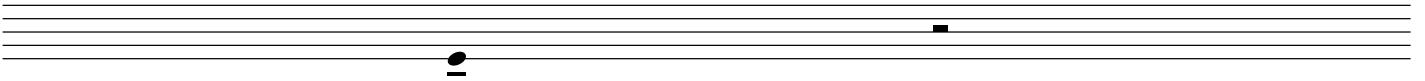
[35:00]



36:54

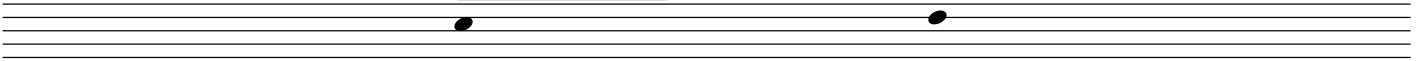


37:19



37:58

38:47



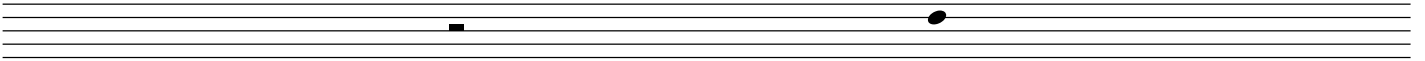
[40:00]





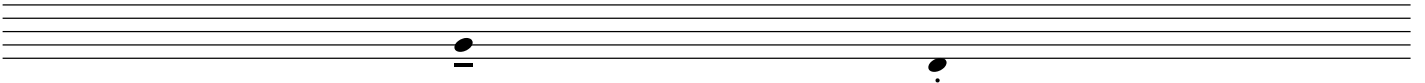
[40:00]

40:37

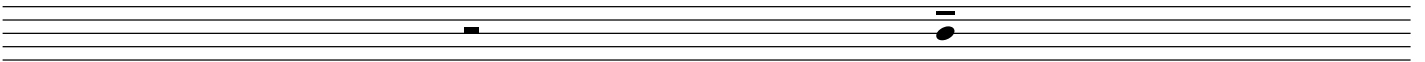


41:18

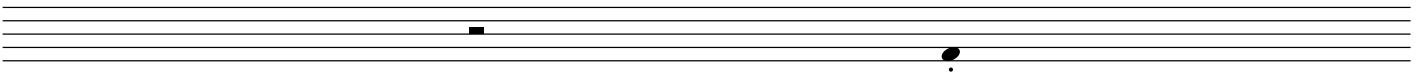
41:47



42:55

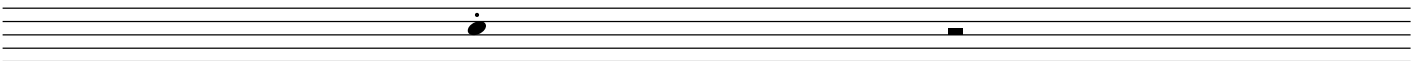


43:49



44:06

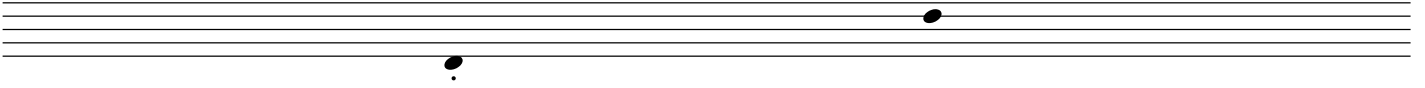
[45:00]



[45:00]

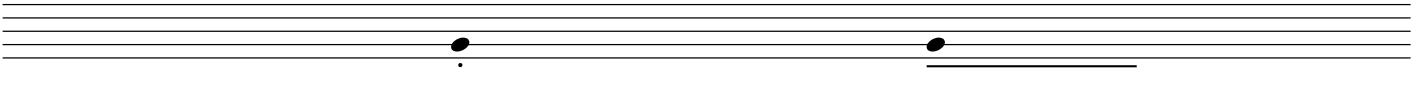
45:30

45:47

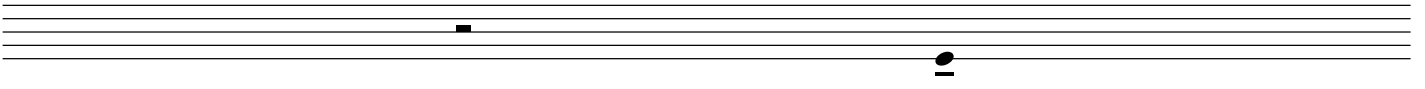


46:12

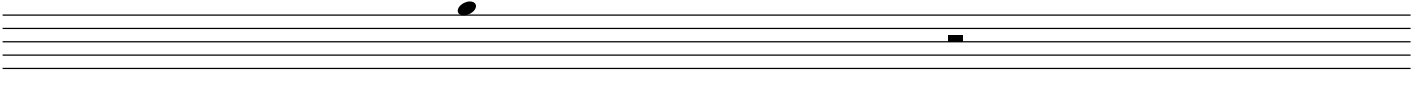
46:38



47:57



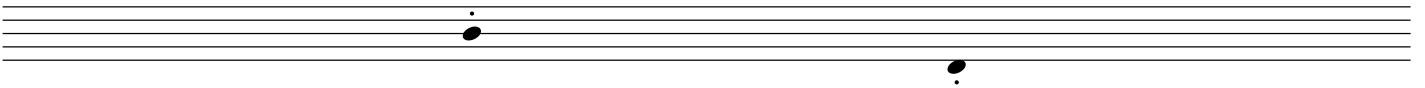
48:23



49:02

49:52

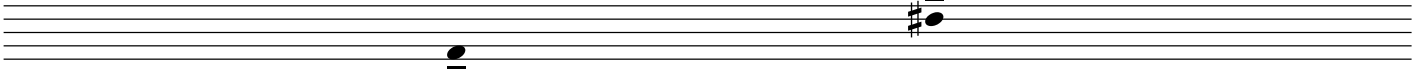
[50:00]



[50:00]

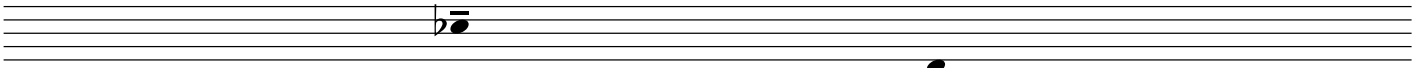
50:07

50:43



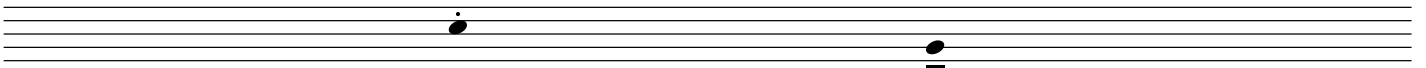
51:19

51:45



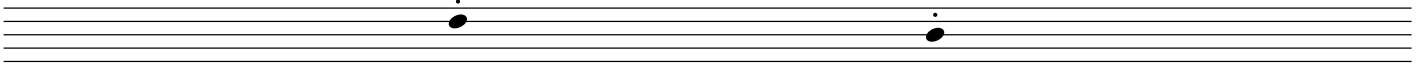
52:23

52:56



53:14

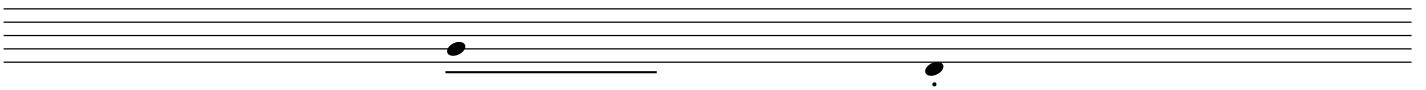
53:38



53:58

54:55

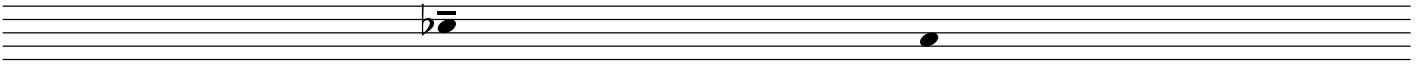
[55:00]



[55:00]

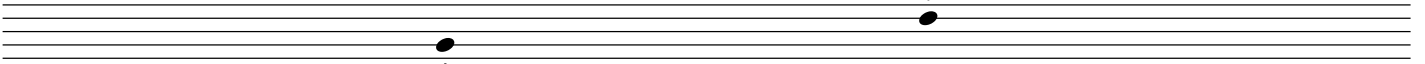
55:01

55:19



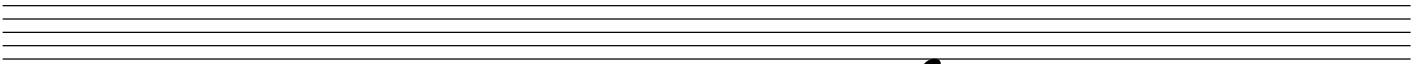
56:27

56:48



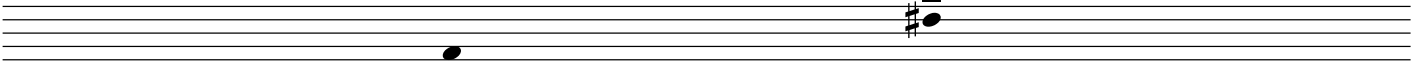
57:11

57:36



57:56

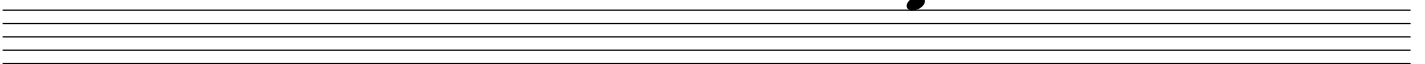
58:18



59:01

59:51

[60:00]

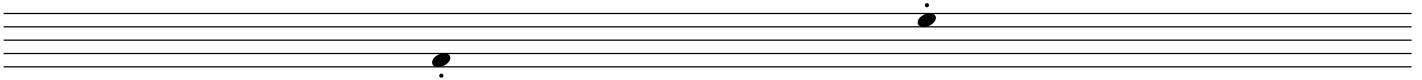


pitches 2

time sections of 60 seconds. take your time between the sounds when there are more than two sounds in one section.

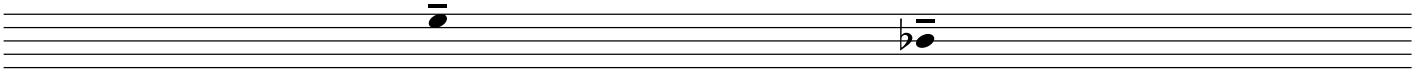
0:00 ←

→ 1:00



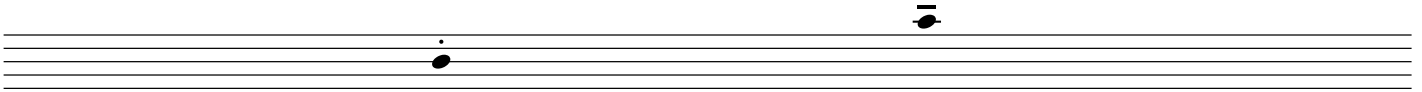
1:00 ←

→ 2:00



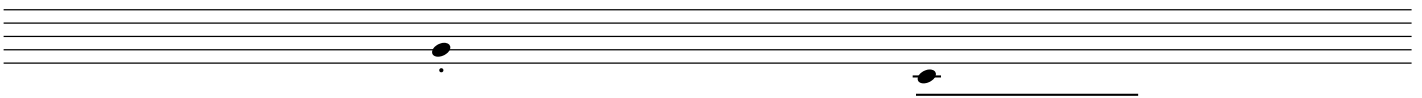
2:00 ←

→ 3:00



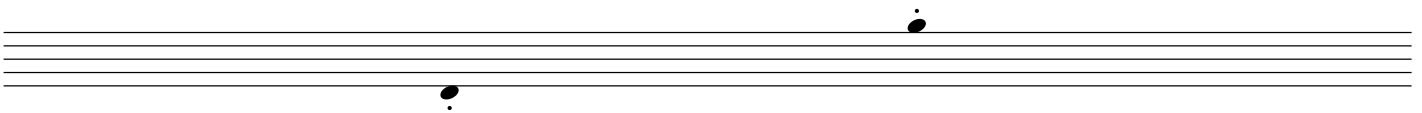
3:00 ←

→ 4:00



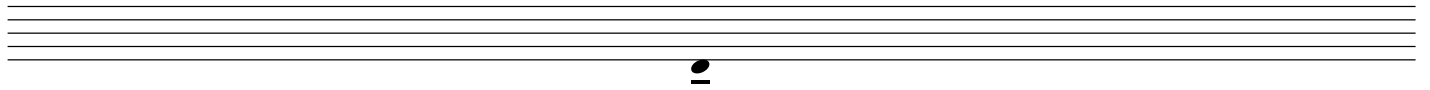
4:00 ←

→ 5:00



5:00 ←

→ 6:00



6:00 ←

→ 7:00



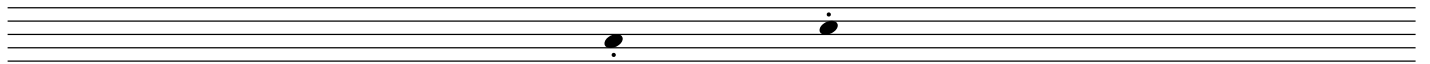
7:00 ←

→ 8:00



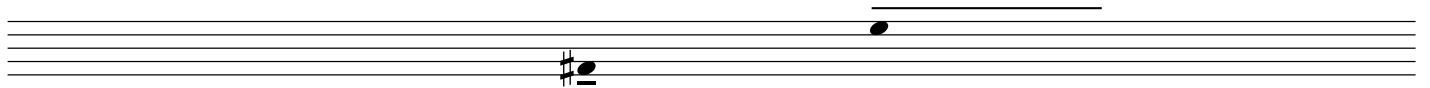
8:00 ←

→ 9:00



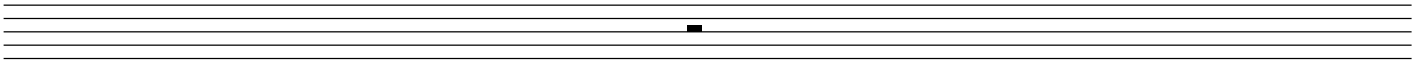
9:00 ←

→ 10:00



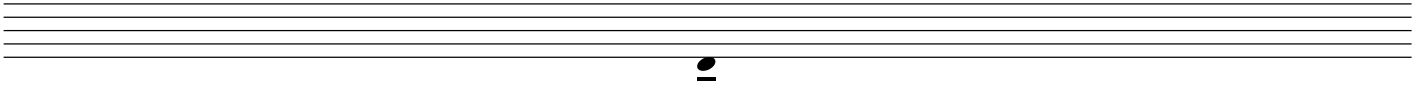
10:00 ←

→ 11:00



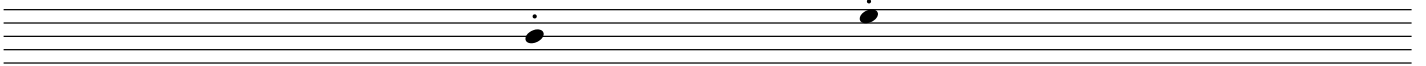
11:00 ←

→ 12:00



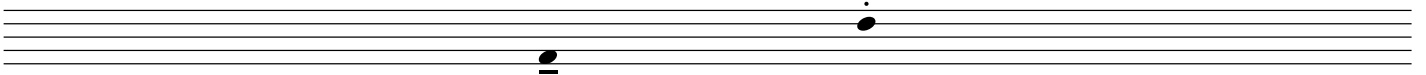
12:00 ←

→ 13:00



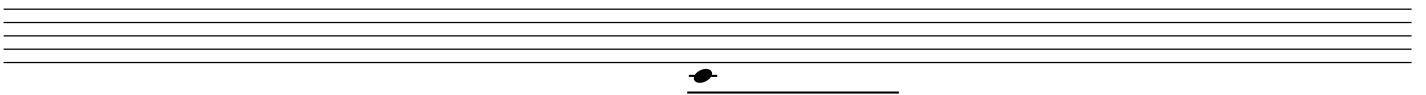
13:00 ←

→ 14:00



14:00 ←

→ 15:00



15:00 ←

→ 16:00



16:00 ←

→ 17:00



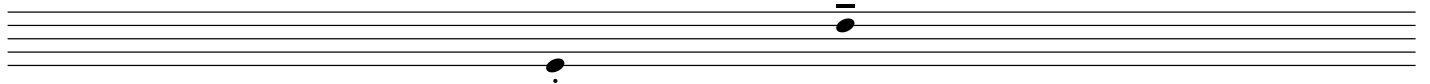
17:00 ←

→ 18:00



18:00 ←

→ 19:00



19:00 ←

→ 20:00





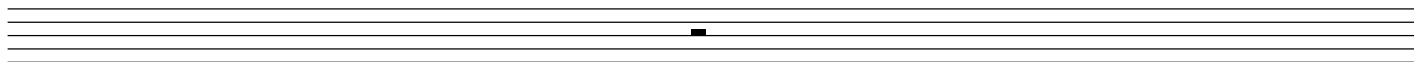
20:00 ←

→ 21:00



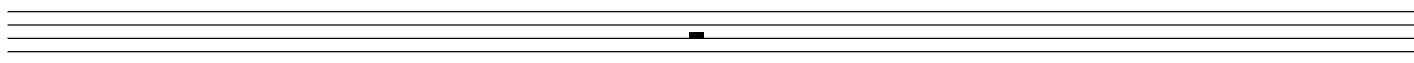
21:00 ←

→ 22:00



22:00 ←

→ 23:00



23:00 ←

→ 24:00



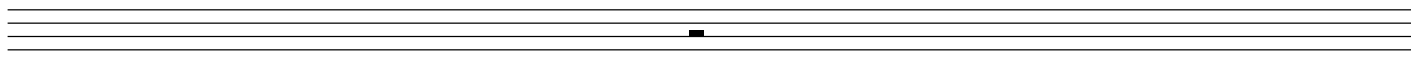
24:00 ←

→ 25:00



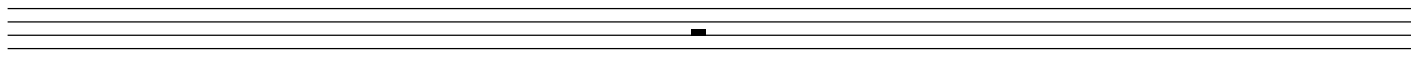
25:00 ←

→ 26:00



26:00 ←

→ 27:00



27:00 ←

→ 28:00



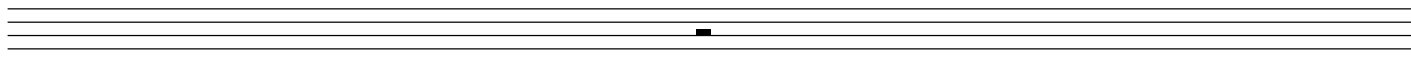
28:00 ←

→ 29:00



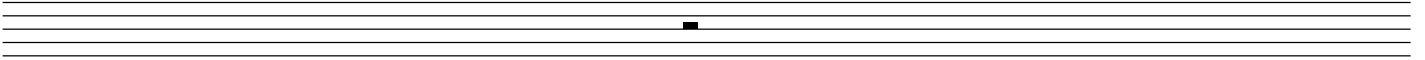
29:00 ←

→ 30:00



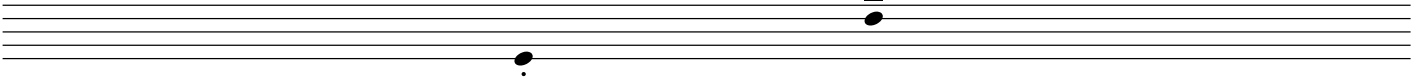
30:00 ←

→ 31:00



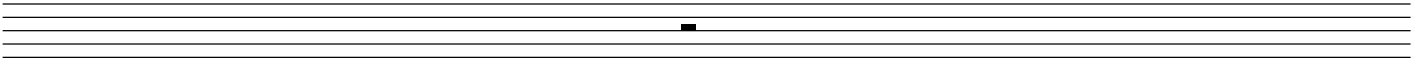
31:00 ←

→ 32:00



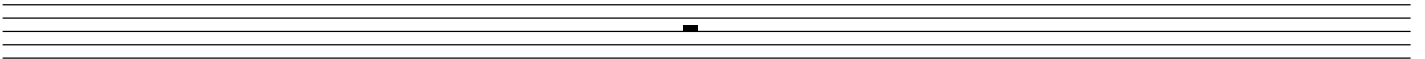
32:00 ←

→ 33:00



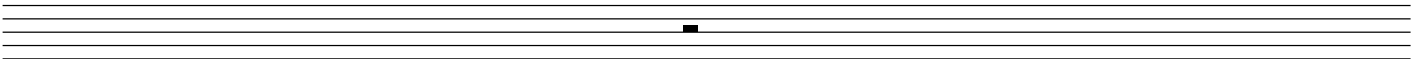
33:00 ←

→ 34:00



34:00 ←

→ 35:00



35:00 ←

→ 36:00



36:00 ←

→ 37:00



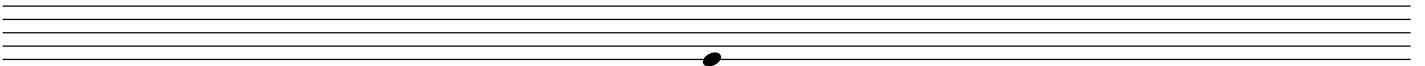
37:00 ←

→ 38:00



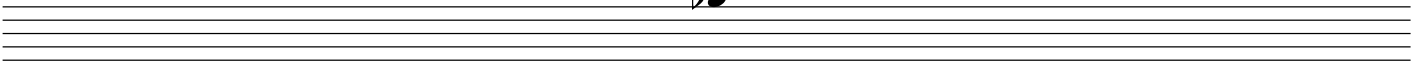
38:00 ←

→ 39:00



39:00 ←

→ 40:00



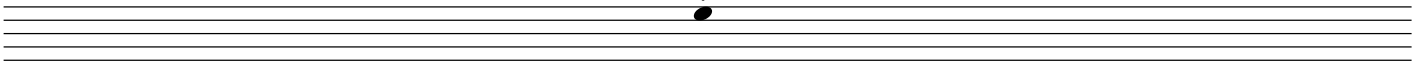
40:00 ←

→ 41:00



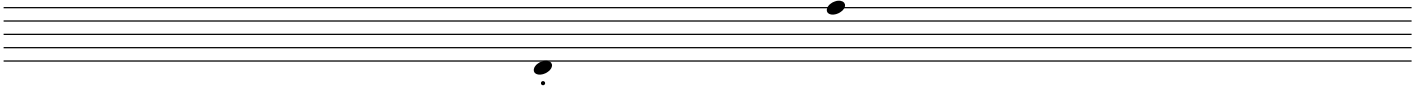
41:00 ←

→ 42:00



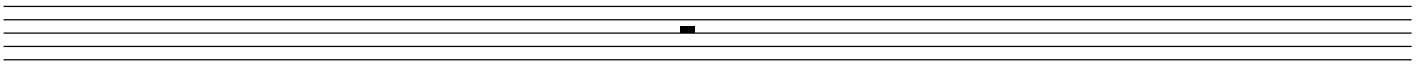
42:00 ←

→ 43:00



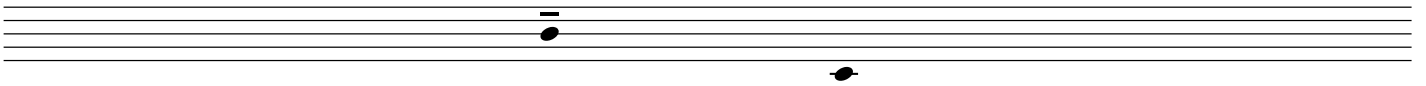
43:00 ←

→ 44:00



44:00 ←

→ 45:00



45:00 ←

→ 46:00



46:00 ←

→ 47:00



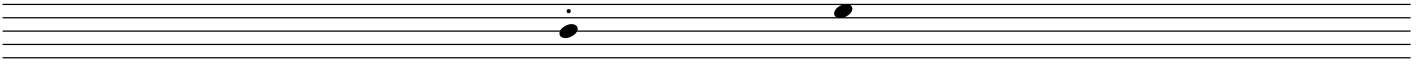
47:00 ←

→ 48:00



48:00 ←

→ 49:00



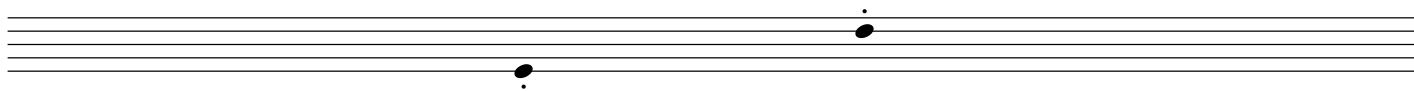
49:00 ←

→ 50:00



50:00 ←

→ 51:00



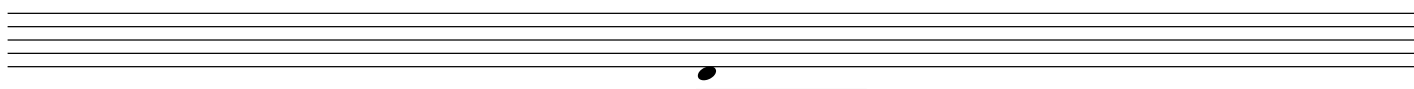
51:00 ←

→ 52:00



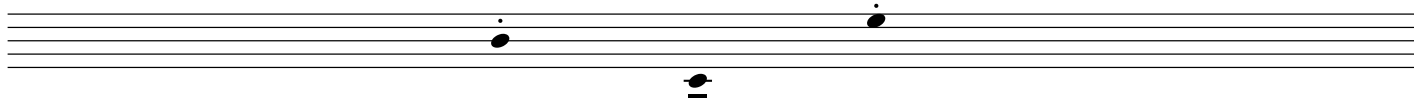
52:00 ←

→ 53:00



53:00 ←

→ 54:00



54:00 ←

→ 55:00



55:00 ←

→ 56:00



56:00 ←

→ 57:00



57:00 ←

→ 58:00



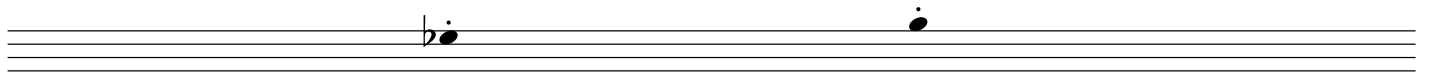
58:00 ←

→ 59:00



59:00 ←

→ 60:00



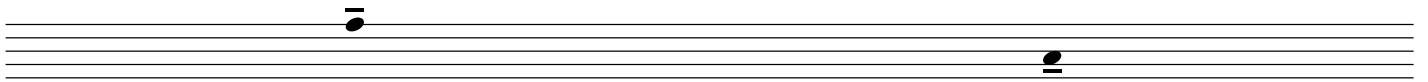


time sections of 30 seconds. take your time between the sounds when there are more than two sounds in one section.

0:00 ←

→ 0:30 ←

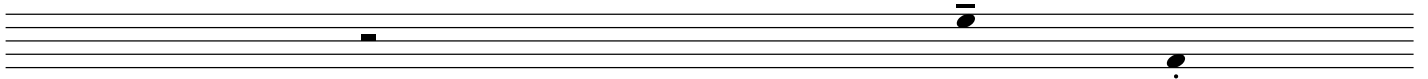
→ 1:00



1:00 ←

→ 1:30 ←

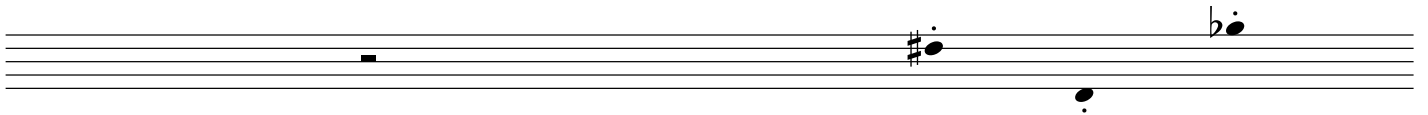
→ 2:00



2:00 ←

→ 2:30 ←

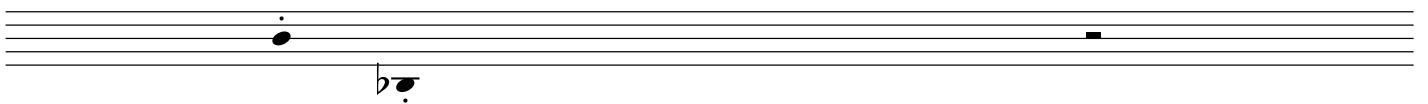
→ 3:00



3:00 ←

→ 3:30 ←

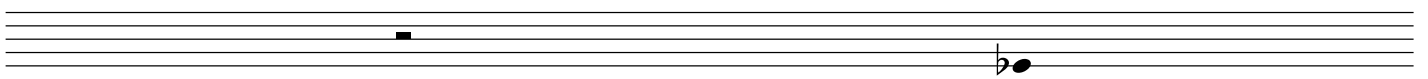
→ 4:00



4:00 ←

→ 4:30 ←

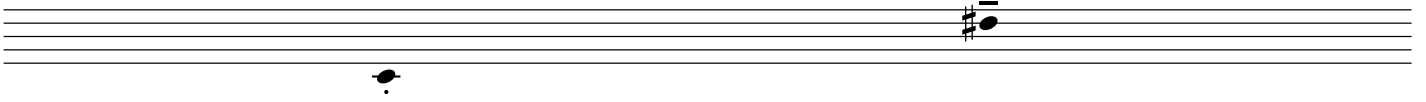
→ 5:00



5:00 ←

→ 5:30 ←

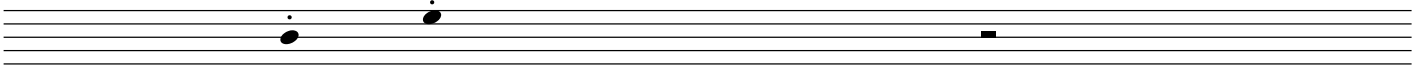
→ 6:00



6:00 ←

→ 6:30 ←

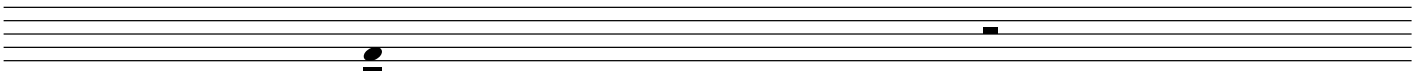
→ 7:00



7:00 ←

→ 7:30 ←

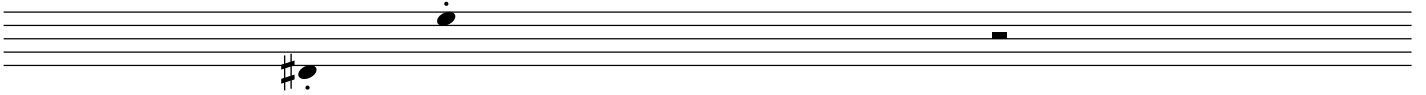
→ 8:00



8:00 ←

→ 8:30 ←

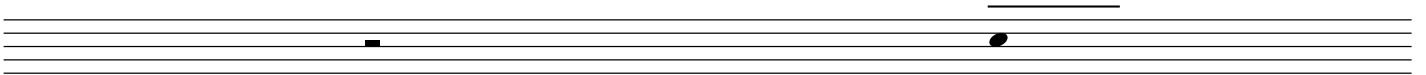
→ 9:00



9:00 ←

→ 9:30 ←

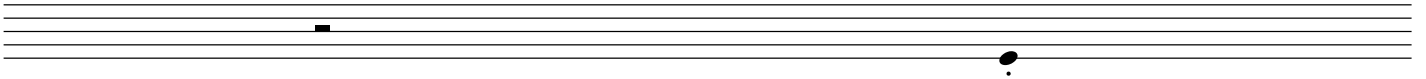
→ 10:00



10:00 ←

→ 10:30 ←

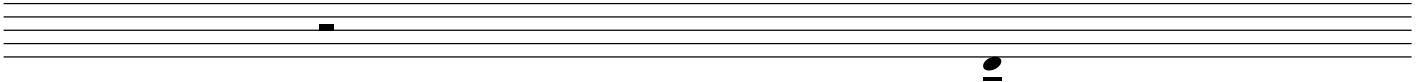
→ 11:00



11:00 ←

→ 11:30 ←

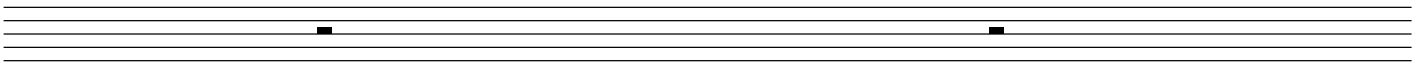
→ 12:00



12:00 ←

→ 12:30 ←

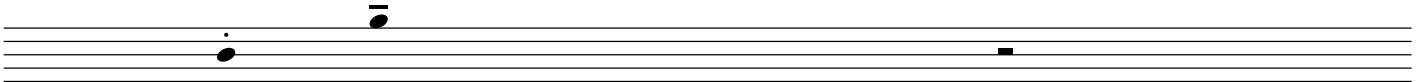
→ 13:00



13:00 ←

→ 13:30 ←

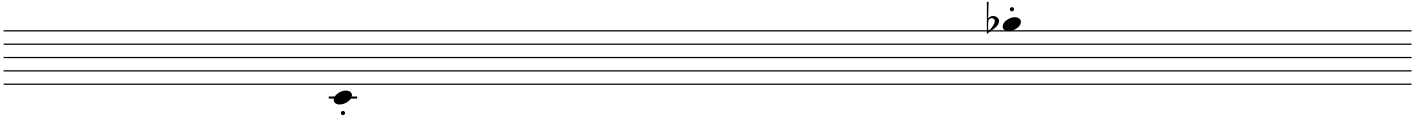
→ 14:00



14:00 ←

→ 14:30 ←

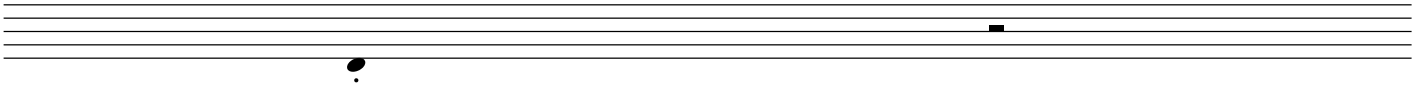
→ 15:00



15:00 ←

→ 15:30 ←

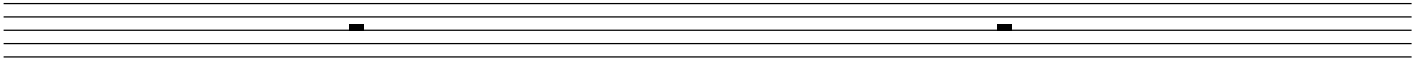
→ 16:00



16:00 ←

→ 16:30 ←

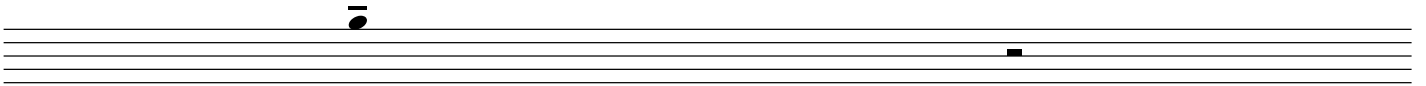
→ 17:00



17:00 ←

→ 17:30 ←

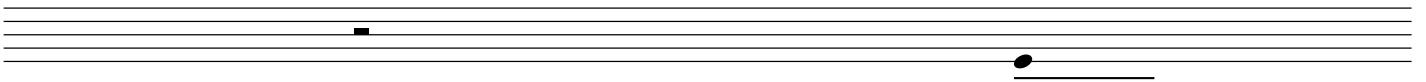
→ 18:00



18:00 ←

→ 18:30 ←

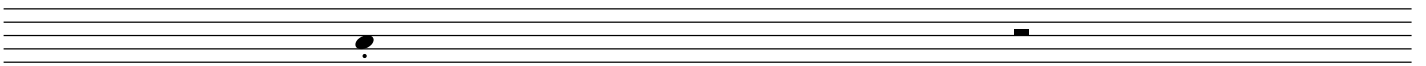
→ 19:00



19:00 ←

→ 19:30 ←

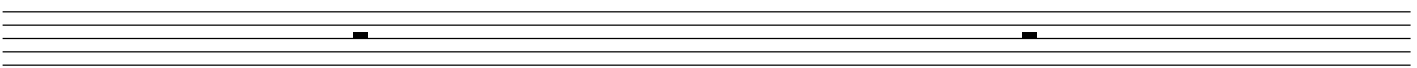
→ 20:00



20:00 ←

→ 20:30 ←

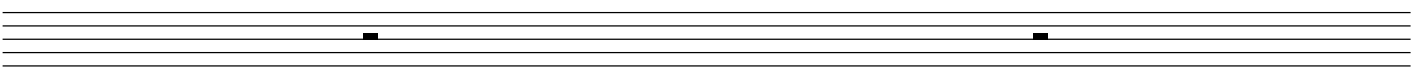
→ 21:00



21:00 ←

→ 21:30 ←

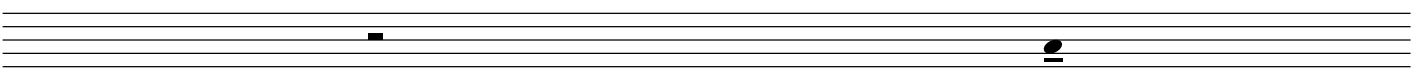
→ 22:00



22:00 ←

→ 22:30 ←

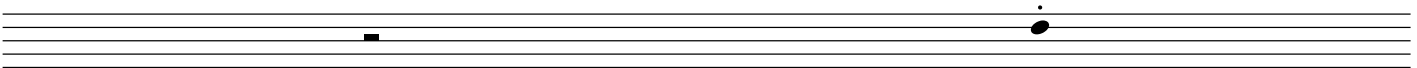
→ 23:00



23:00 ←

→ 23:30 ←

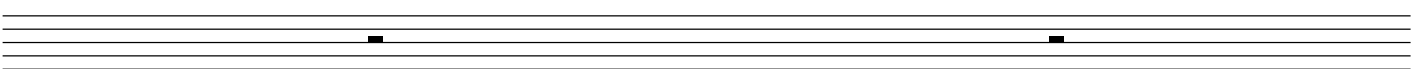
→ 24:00



24:00 ←

→ 24:30 ←

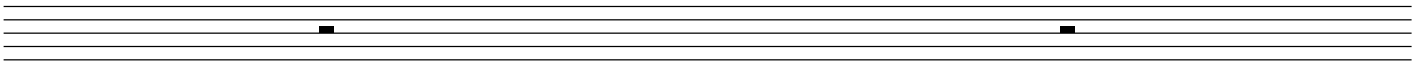
→ 25:00



25:00 ←

→ 25:30 ←

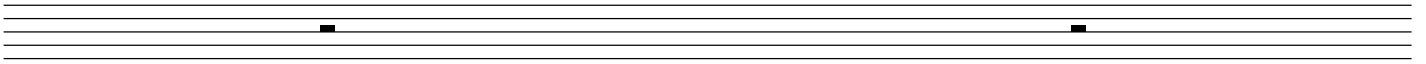
→ 26:00



26:00 ←

→ 26:30 ←

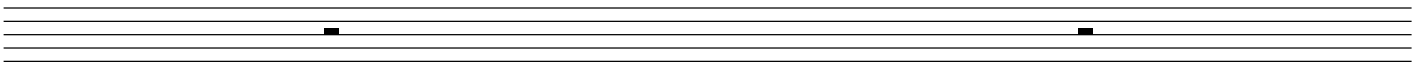
→ 27:00



27:00 ←

→ 27:30 ←

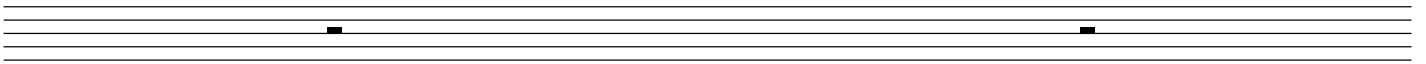
→ 28:00



28:00 ←

→ 28:30 ←

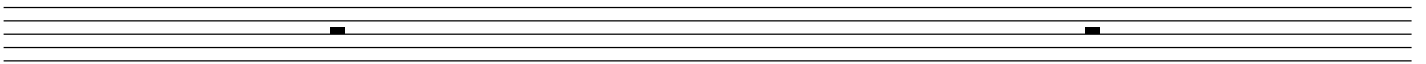
→ 29:00



29:00 ←

→ 29:30 ←

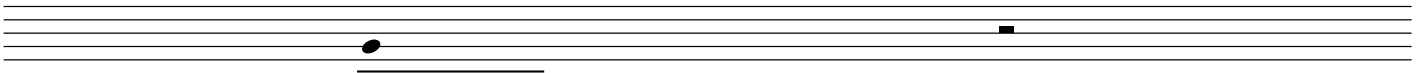
→ 30:00



30:00 ←

→ 30:30 ←

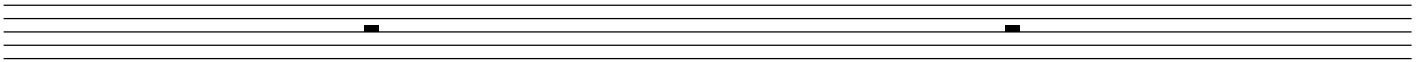
→ 31:00



31:00 ←

→ 31:30 ←

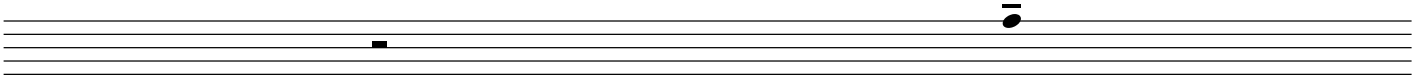
→ 32:00



32:00 ←

→ 32:30 ←

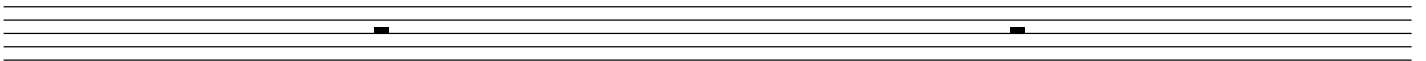
→ 33:00



33:00 ←

→ 33:30 ←

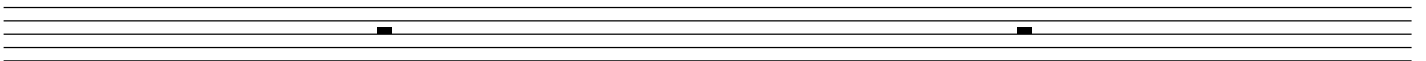
→ 34:00



34:00 ←

→ 34:30 ←

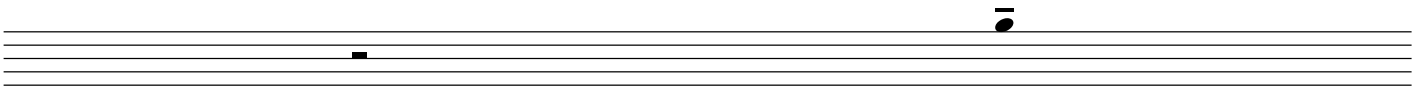
→ 35:00



35:00 ←

→ 35:30 ←

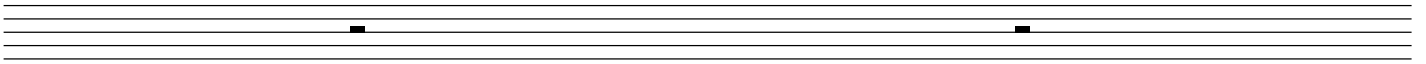
→ 36:00



36:00 ←

→ 36:30 ←

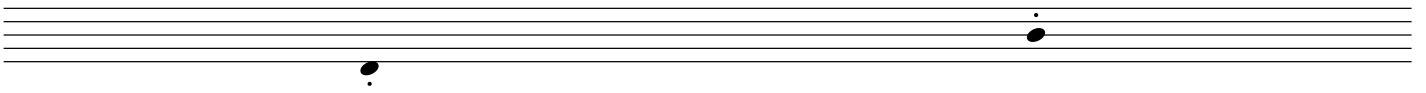
→ 37:00



37:00 ←

→ 37:30 ←

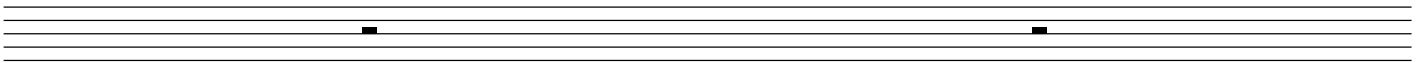
→ 38:00



38:00 ←

→ 38:30 ←

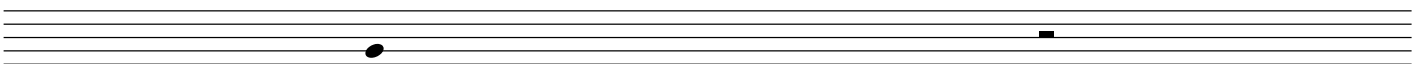
→ 39:00



39:00 ←

→ 39:30 ←

→ 40:00

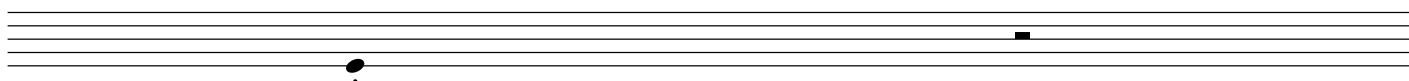




40:00 ←

→ 40:30 ←

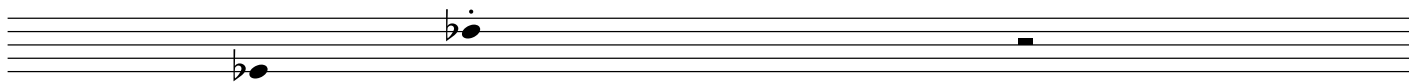
→ 41:00



41:00 ←

→ 41:30 ←

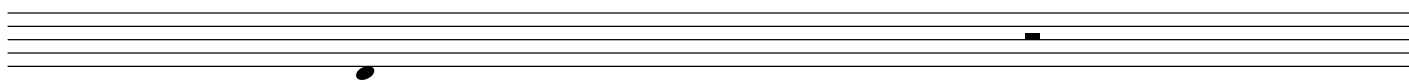
→ 42:00



42:00 ←

→ 42:30 ←

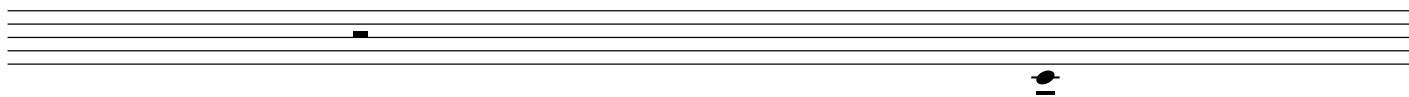
→ 43:00



43:00 ←

→ 43:30 ←

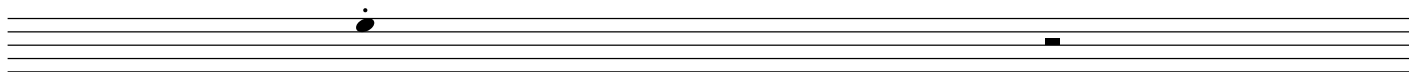
→ 44:00



44:00 ←

→ 44:30 ←

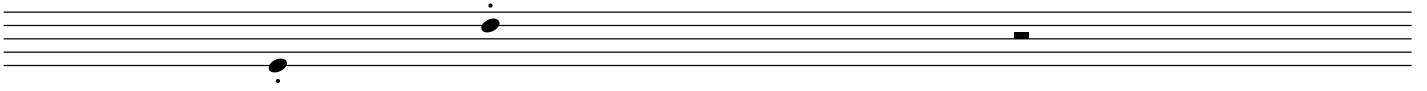
→ 45:00



45:00 ←

→ 45:30 ←

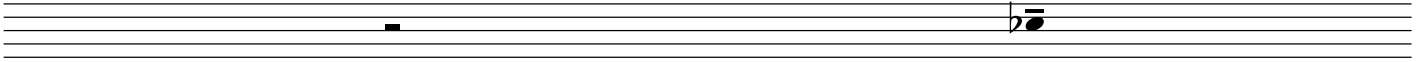
→ 46:00



46:00 ←

→ 46:30 ←

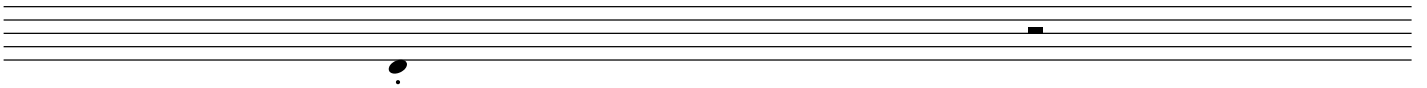
→ 47:00



47:00 ←

→ 47:30 ←

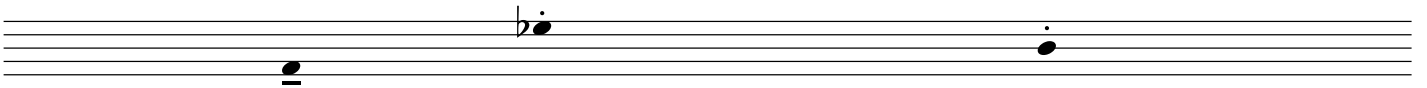
→ 48:00



48:00 ←

→ 48:30 ←

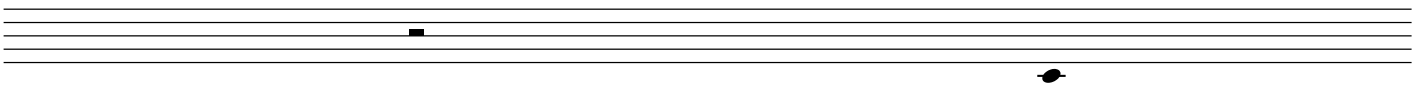
→ 49:00



49:00 ←

→ 49:30 ←

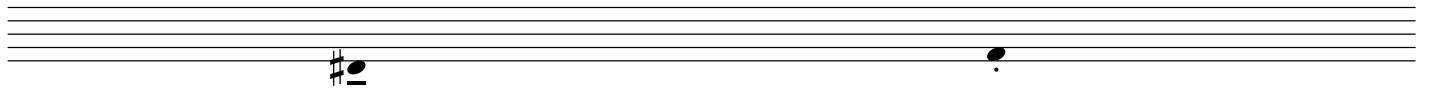
→ 50:00



50:00 ←

→ 50:30 ←

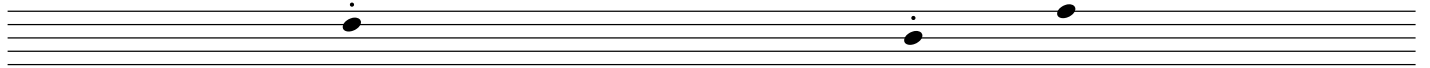
→ 51:00



51:00 ←

→ 51:30 ←

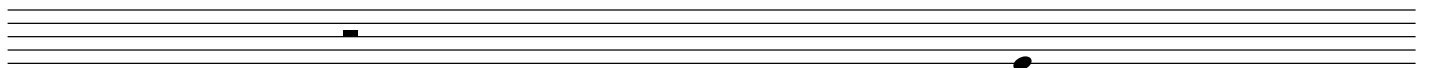
→ 52:00



52:00 ←

→ 52:30 ←

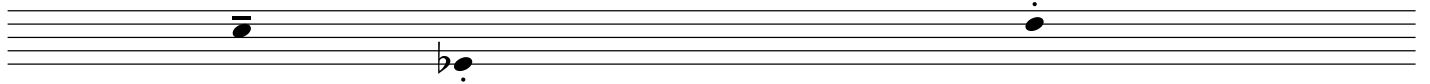
→ 53:00



53:00 ←

→ 53:30 ←

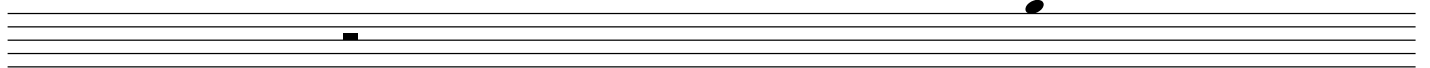
→ 54:00



54:00 ←

→ 54:30 ←

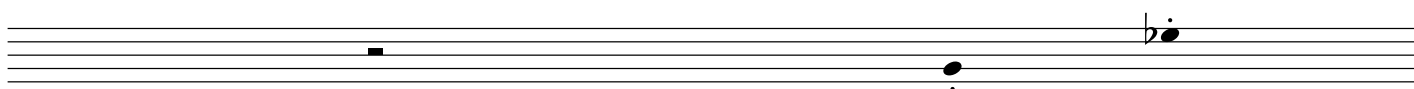
→ 55:00



55:00 ←

→ 55:30 ←

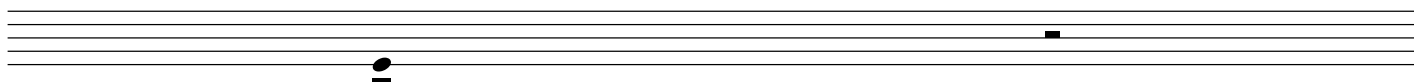
→ 56:00



56:00 ←

→ 56:30 ←

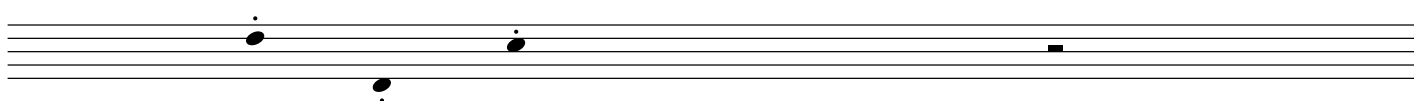
→ 57:00



57:00 ←

→ 57:30 ←

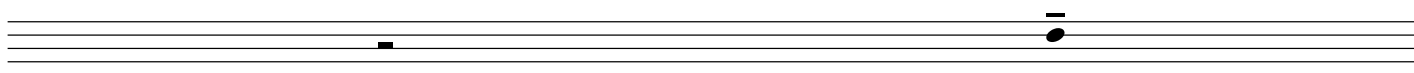
→ 58:00



58:00 ←

→ 58:30 ←

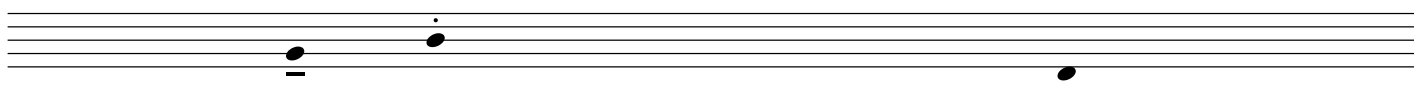
→ 59:00



59:00 ←

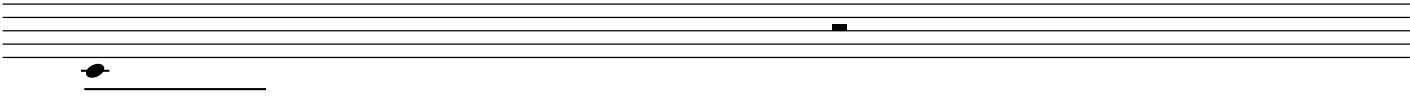
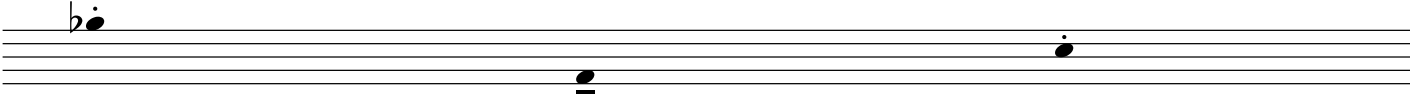
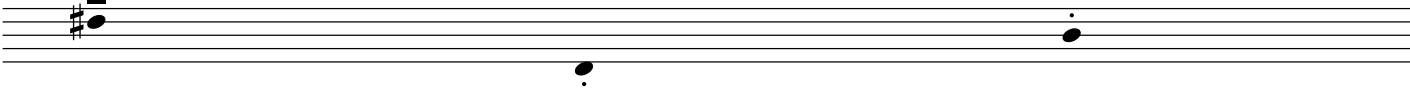
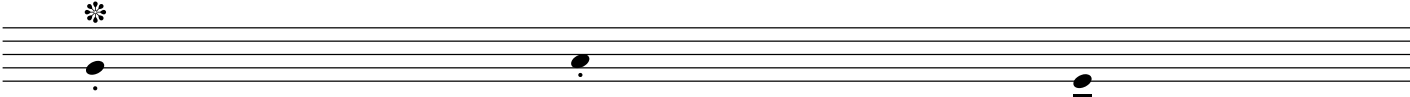
→ 59:30 ←

→ 60:00



one sound follows the other without longer pauses between the sounds.

0:00

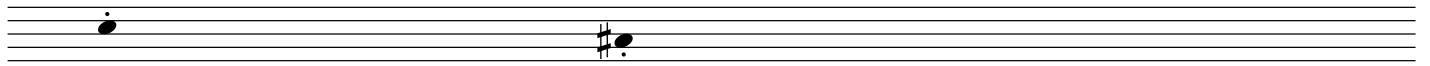
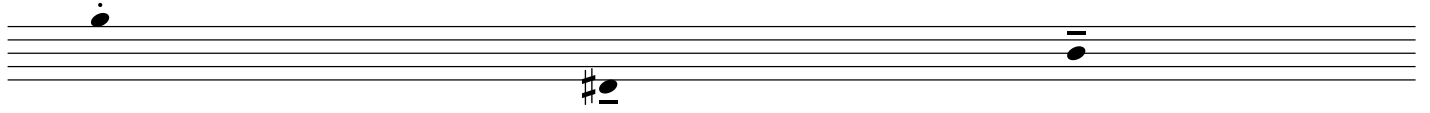
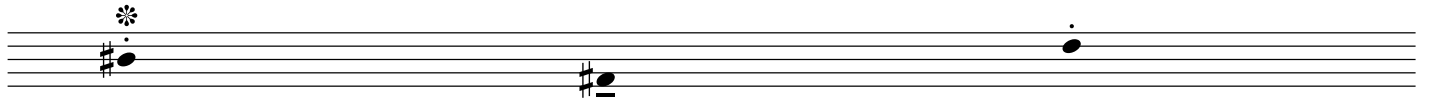


[5:00]



4

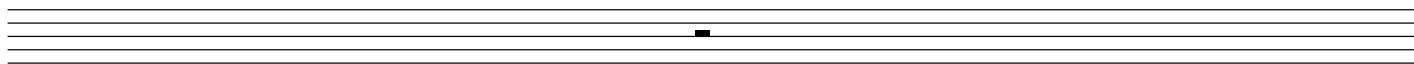
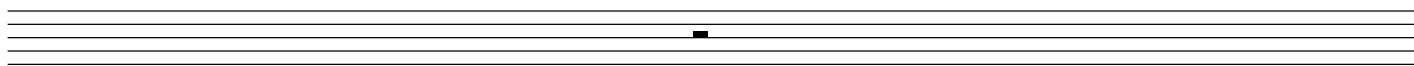
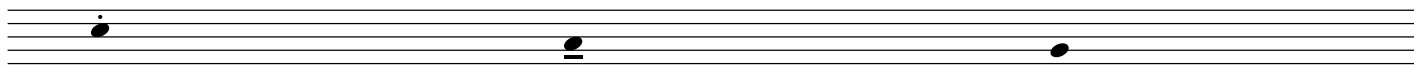
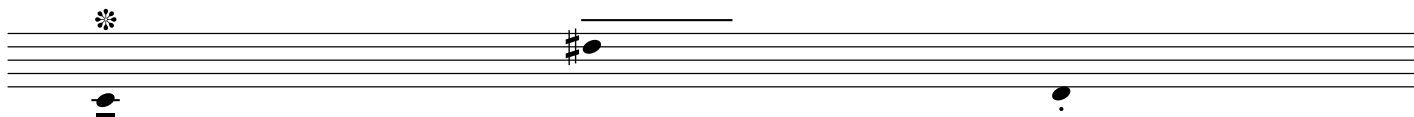
5:00



[10:00]



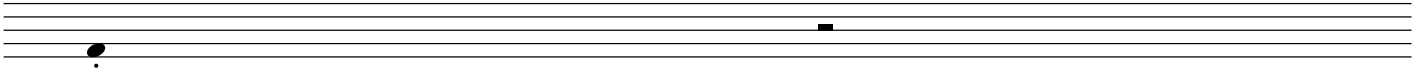
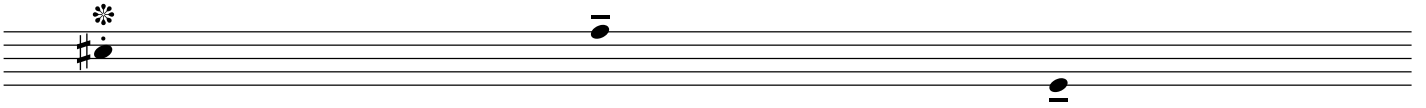
10:00



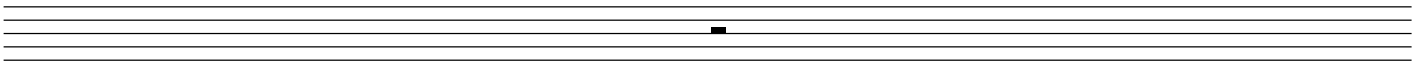
[15:00]



15:00



[20:00]





20:00

A musical staff with a treble clef, a key signature of one sharp (F#), and a common time signature (C). The staff contains a single note on the first line (F#4) with a fermata above it.

An empty musical staff with a treble clef.

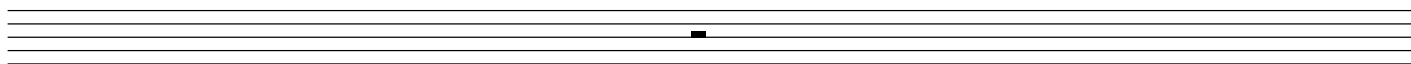
An empty musical staff with a treble clef.

An empty musical staff with a treble clef.

[25:00]

An empty musical staff with a treble clef.

25:00



[30:00]



30:00

A musical staff with a treble clef. A sharp sign is placed on the first line. A note with a flower symbol above it is on the first line. A bar line is on the second line.

An empty musical staff with a bar line on the second line.

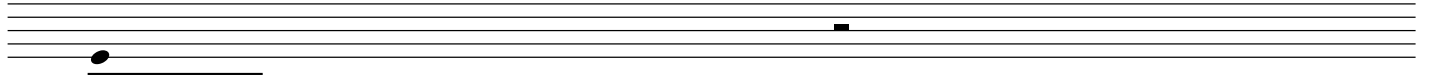
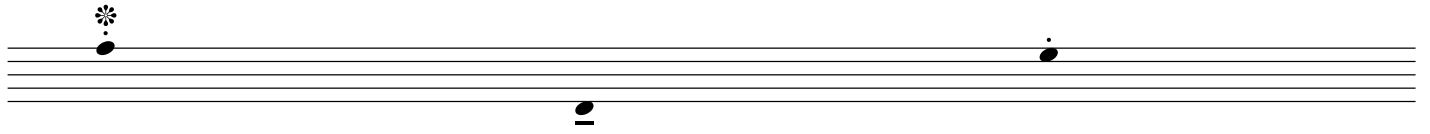
An empty musical staff with a bar line on the second line.

An empty musical staff with a bar line on the second line.

[35:00]

An empty musical staff with a bar line on the second line.

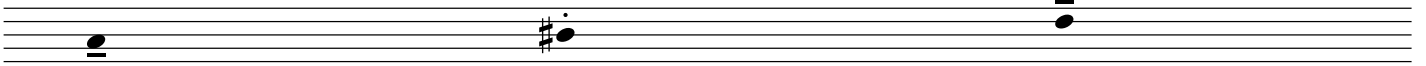
35:00



[40:00]



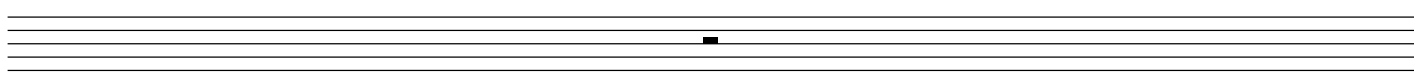
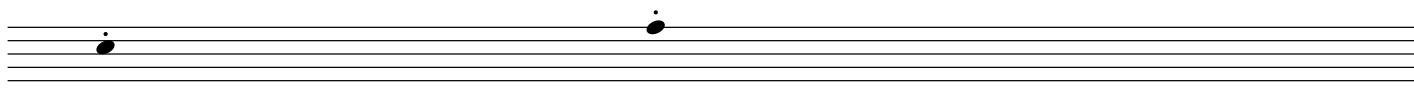
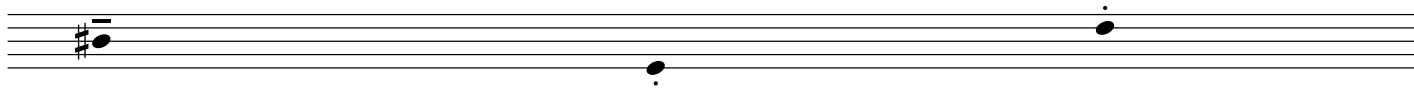
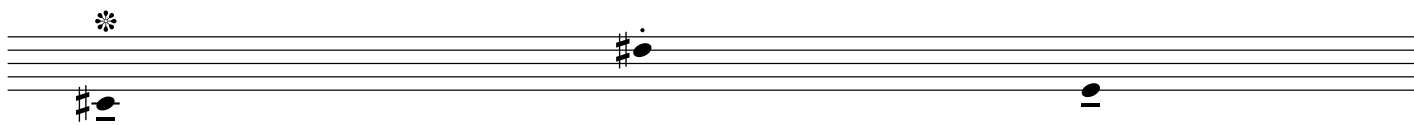
40:00



[45:00]



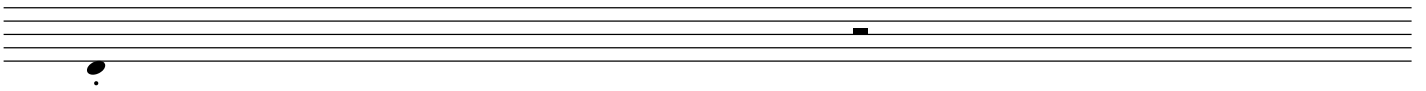
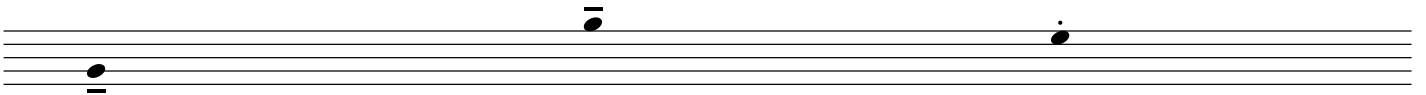
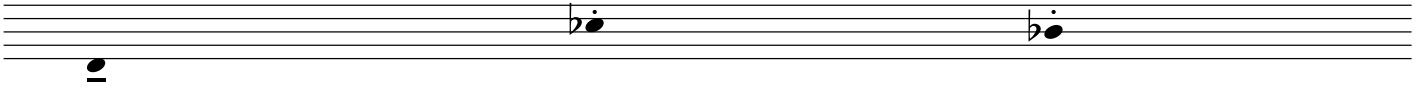
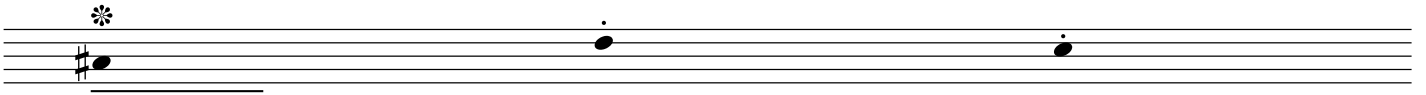
45:00



[50:00]



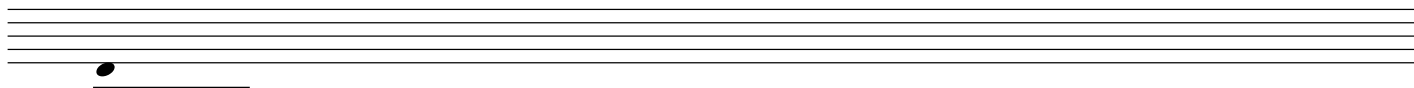
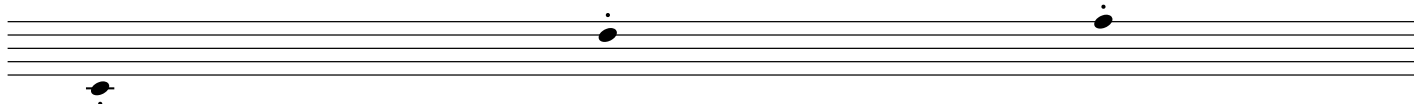
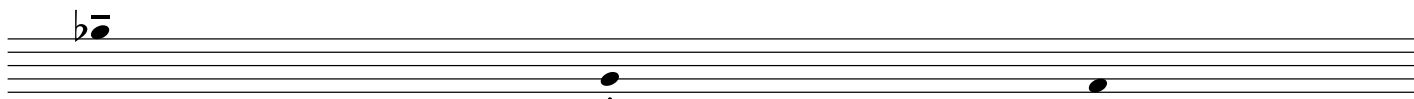
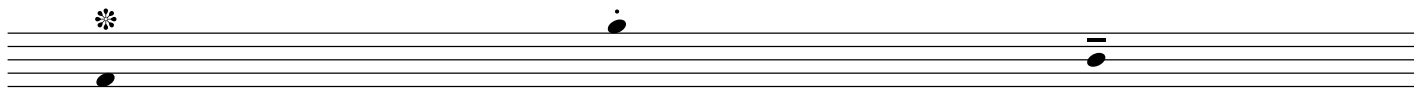
50:00



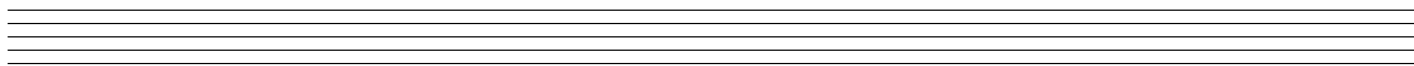
[55:00]



55:00



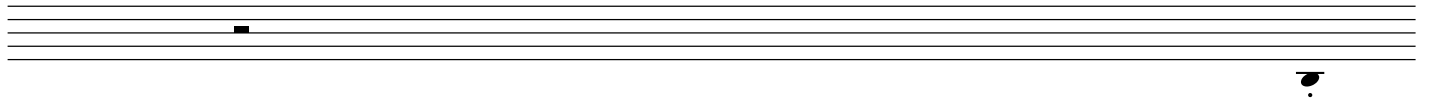
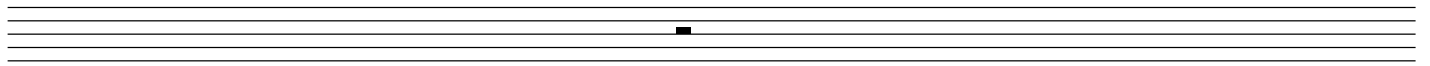
[60:00]



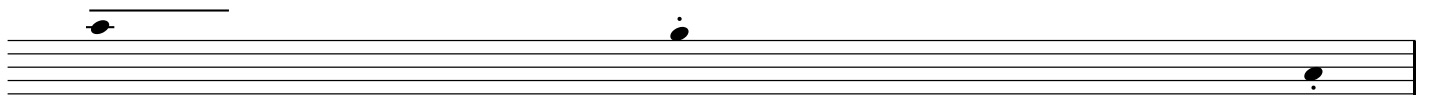


the sounds follow each other without longer pauses between the sounds.

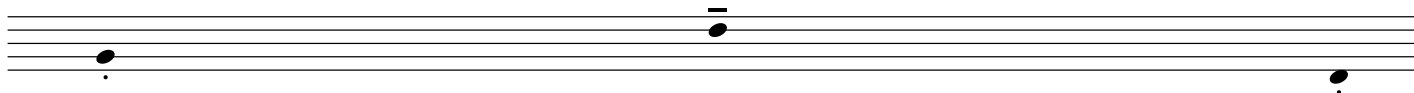
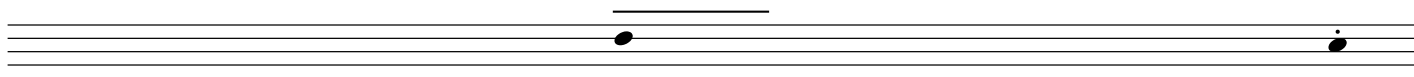
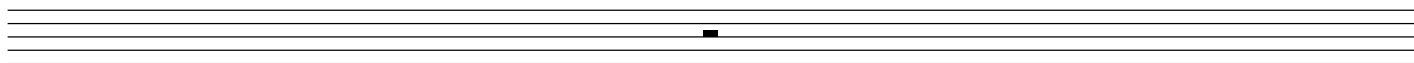
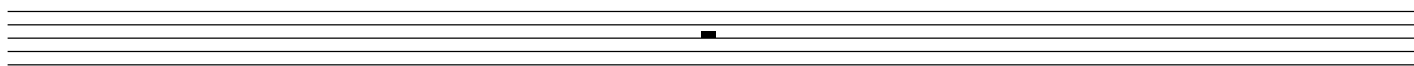
[0:00]



5:00



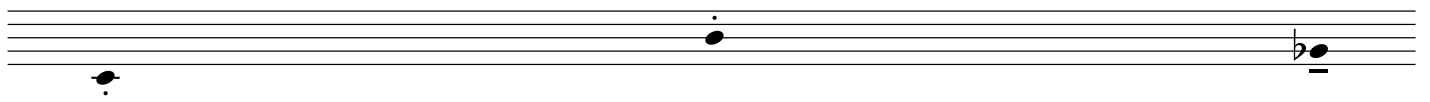
[5:00]



10:00



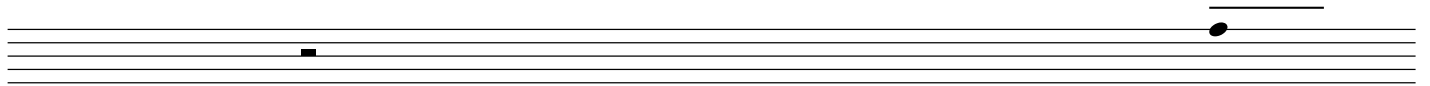
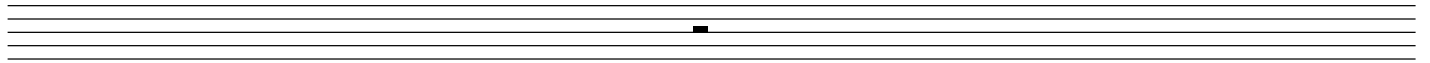
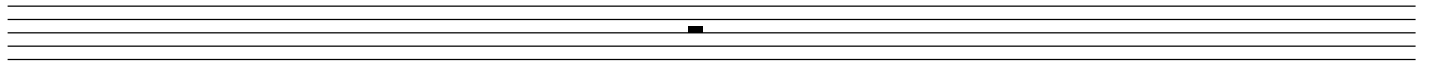
[10:00]



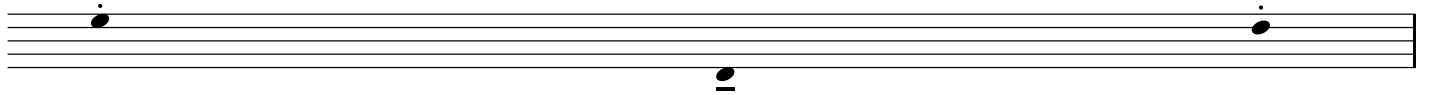
15:00



[15:00]

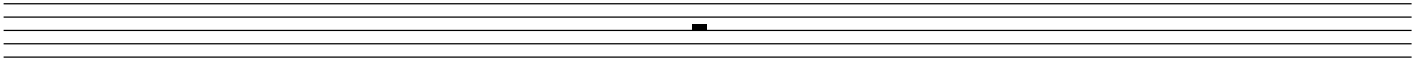
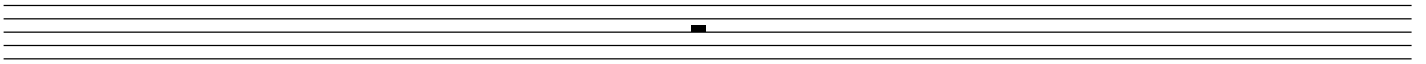


20:00

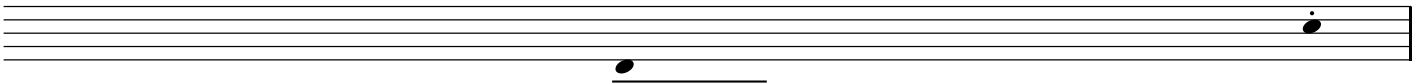


5

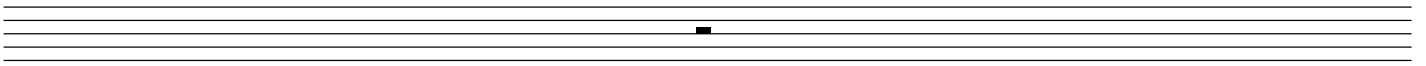
[20:00]



25:00



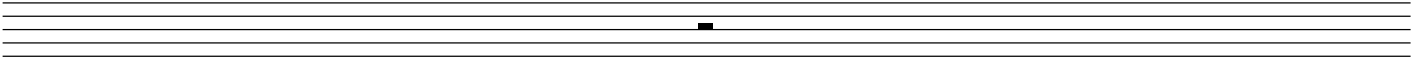
[25:00]



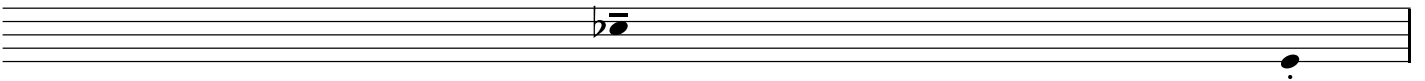
30:00



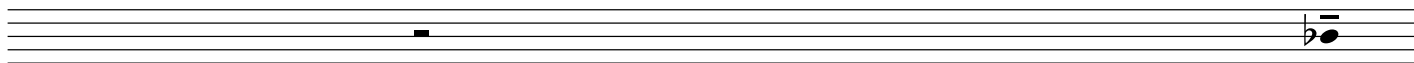
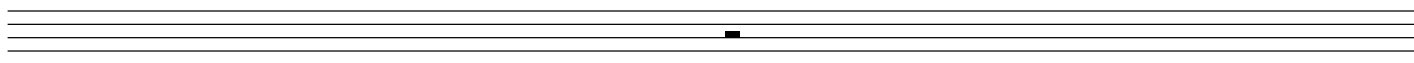
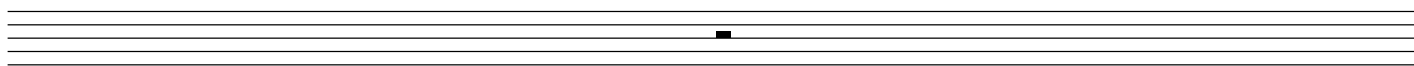
[30:00]



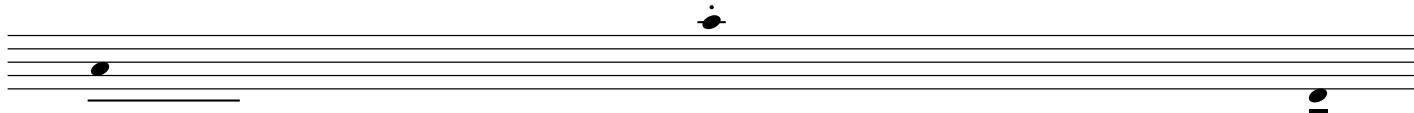
35:00



[35:00]

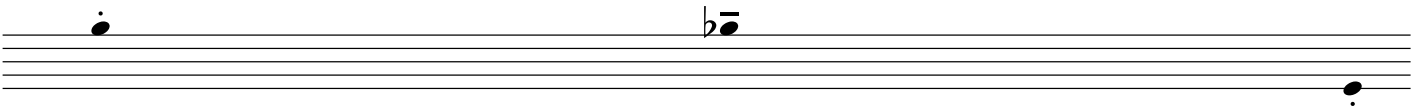
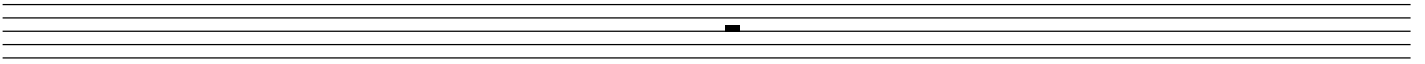


40:00





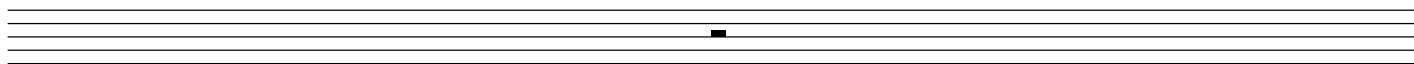
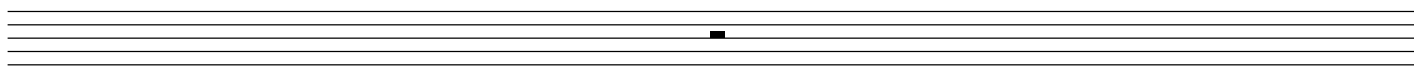
[40:00]



45:00



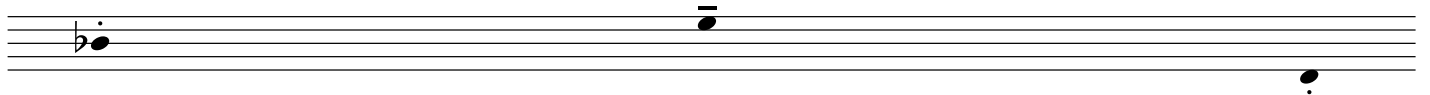
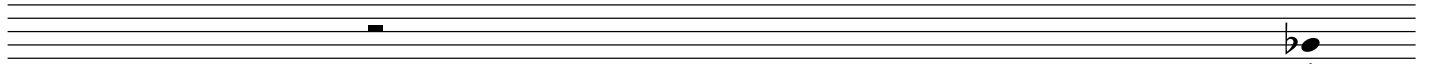
[45:00]



50:00



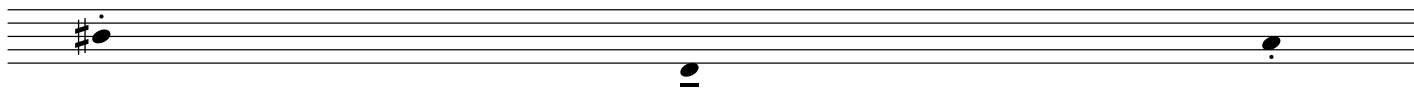
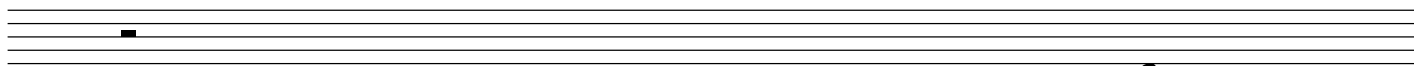
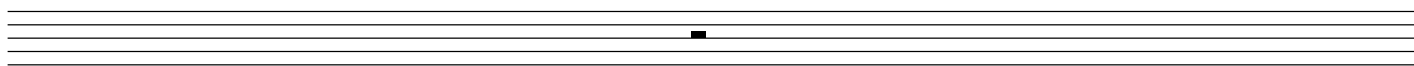
[50:00]



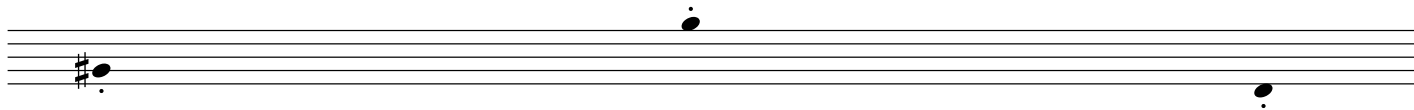
55:00



[55:00]



60:00



pitches 6

0:00

time sections of 50 seconds. the sounds follow each other without longer pauses if there are more than one sounds in one section.

0:50

A musical staff with five lines. A treble clef is on the left. A note with a flat sign (Bb) is on the first line. A note with a dot (B) is on the second line. A note with a star symbol is on the second line. A horizontal line is drawn below the first line.

0:50

1:40

A musical staff with five lines. A treble clef is on the left. A note with a flat sign (Bb) is on the first line. A note with a dot (B) is on the second line. A note with a star symbol is on the second line. A horizontal line is drawn below the first line.

1:40

2:30

A musical staff with five lines. A treble clef is on the left. A note with a dot (B) is on the second line. A note with a star symbol is on the second line. A horizontal line is drawn below the first line.

2:30

3:20

A musical staff with five lines. A treble clef is on the left. A note with a sharp sign (B) is on the first line. A note with a dot (B) is on the second line. A note with a star symbol is on the first line. A note with a flat sign (Bb) is on the second line. A horizontal line is drawn below the first line.

3:20

4:10

A musical staff with five lines. A treble clef is on the left. A horizontal line is drawn below the first line.

4:10

5:00

A musical staff with five lines. A treble clef is on the left. A note with a flat sign (Bb) is on the first line. A note with a dot (B) is on the second line. A note with a star symbol is on the second line. A horizontal line is drawn below the first line.

5:00

5:50

A musical staff with a treble clef and a flat key signature. A single note is written on the second line, with a star symbol above it.

5:50

6:40

A musical staff with a treble clef and a flat key signature. The first note is on the first line with a star above it. The second note is on the second line with a horizontal line above it.

6:40

7:30

A musical staff with a treble clef and a flat key signature. The first note is on the first line with a star above it. The second note is on the second line with a dot above it.

7:30

8:20

A musical staff with a treble clef and a flat key signature. A single note is written on the second line.

8:20

9:10

A musical staff with a treble clef and a flat key signature. A single note is written on the first line with a star above it.

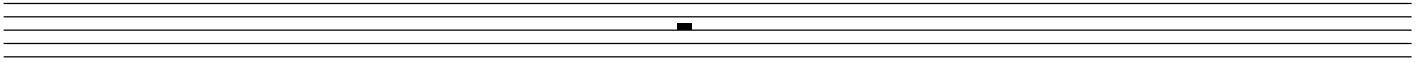
9:10

10:00

A musical staff with a treble clef and a flat key signature. The first note is on the first line with a star above it. The second note is on the second line.

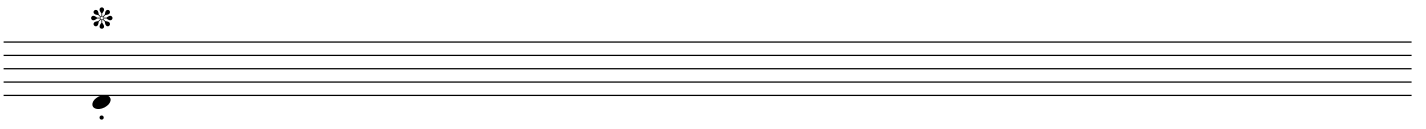
10:00

10:50



10:50

11:40



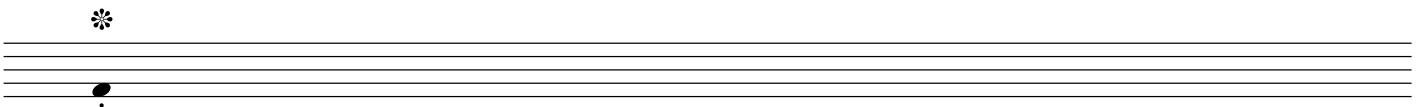
11:40

12:30



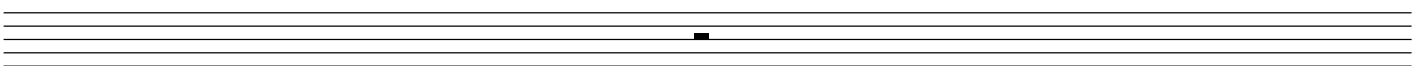
12:30

13:20



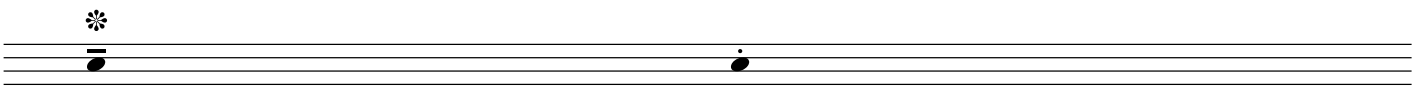
13:20

14:10



14:10

15:00

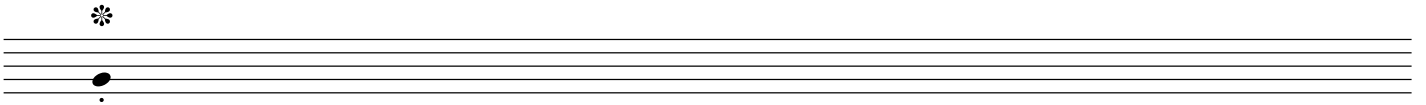


6

100

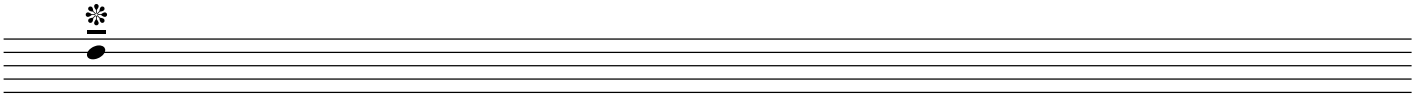
15:00

15:50



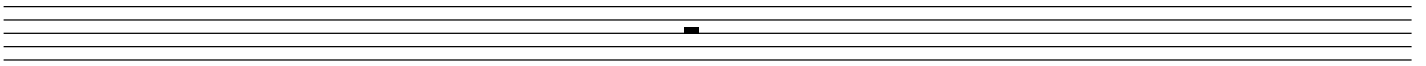
15:50

16:40



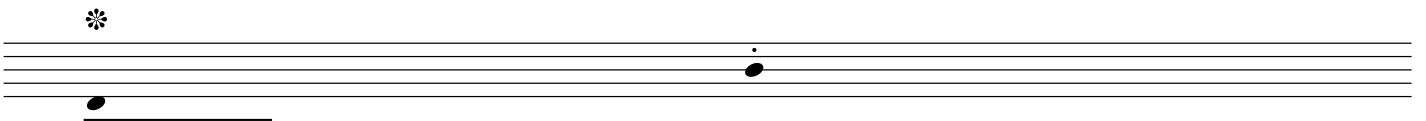
16:40

17:30



17:30

18:20



18:20

19:10



19:10

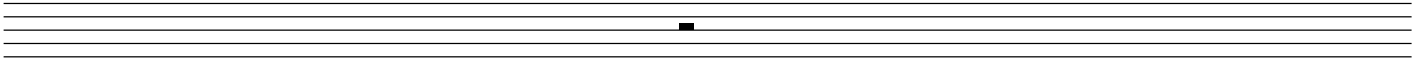
20:00





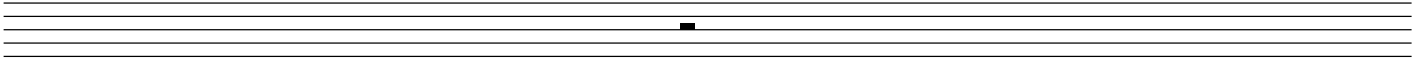
20:00

20:50



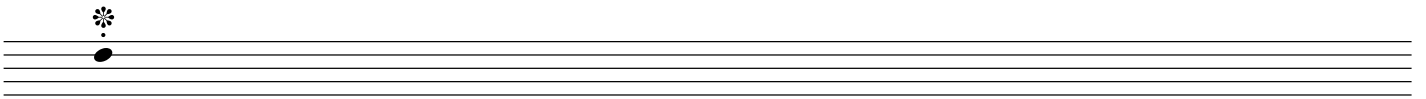
20:50

21:40



21:40

22:30



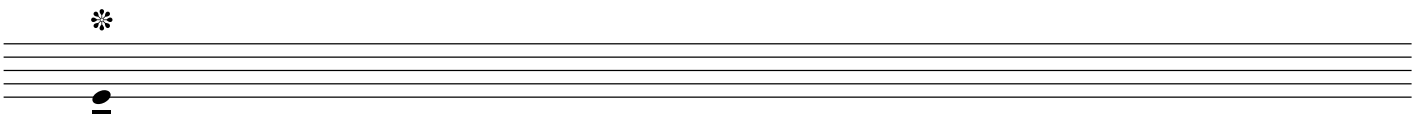
22:30

23:20



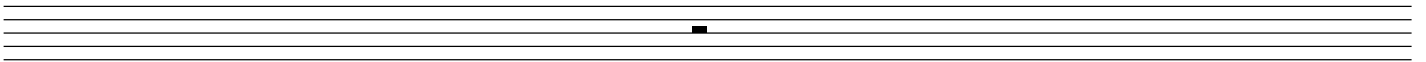
23:20

24:10



24:10

25:00



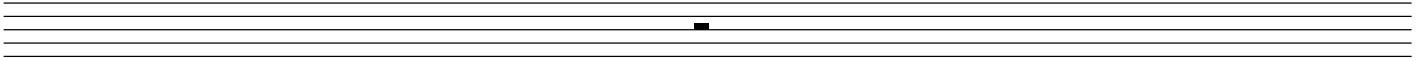
25:00

25:50



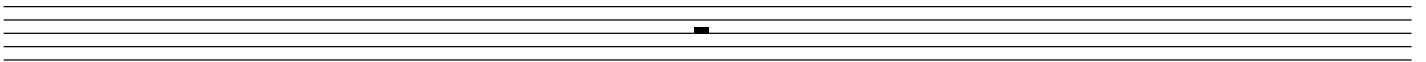
25:50

26:40



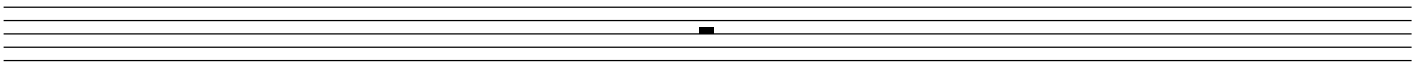
26:40

27:30



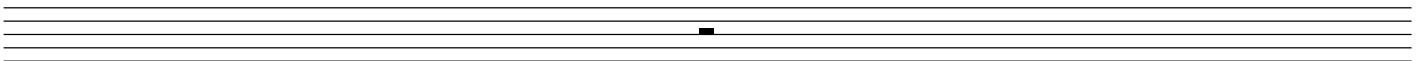
27:30

28:20



28:20

29:10



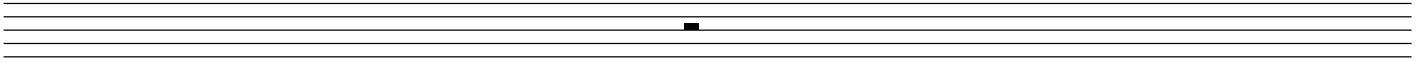
29:10

30:00



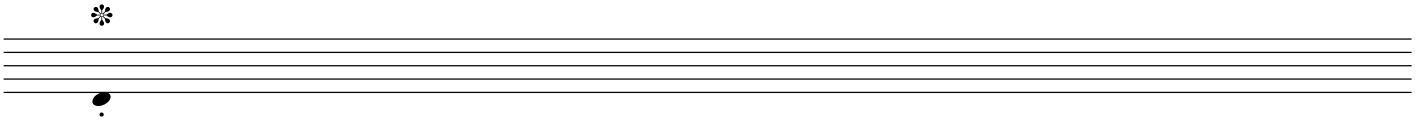
30:00

30:50



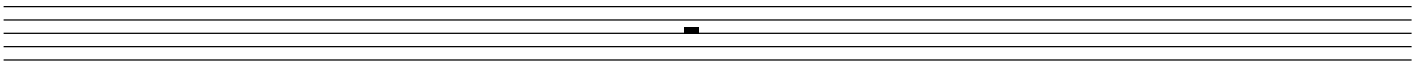
30:50

31:40



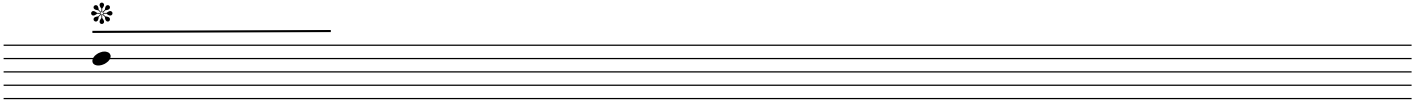
31:40

32:30



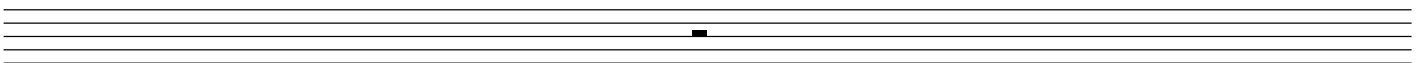
32:30

33:20



33:20

34:10



34:10

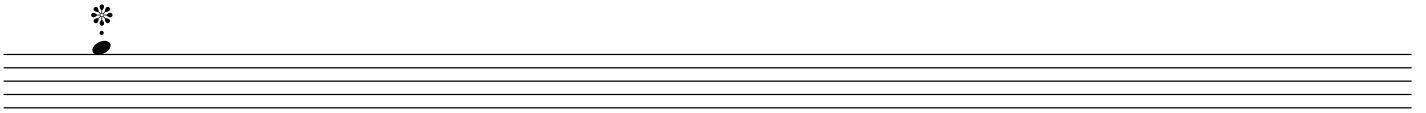
35:00



6

35:00

35:50



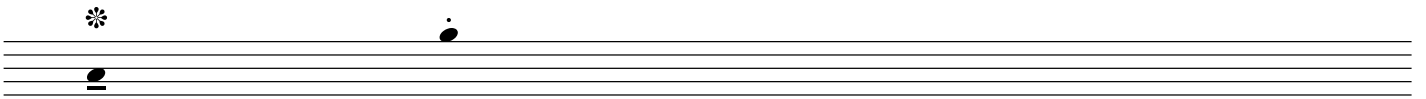
35:50

36:40



36:40

37:30



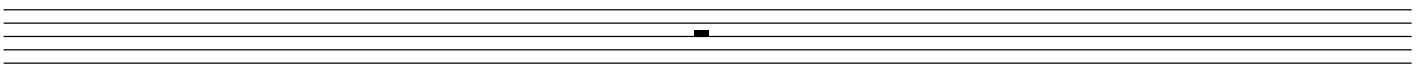
37:30

38:20



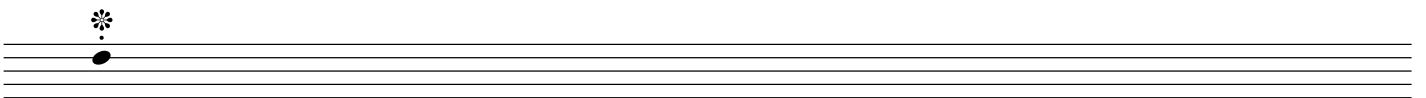
38:20

39:10



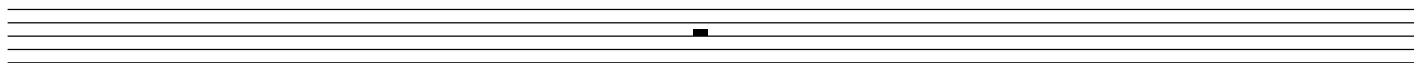
39:10

40:00



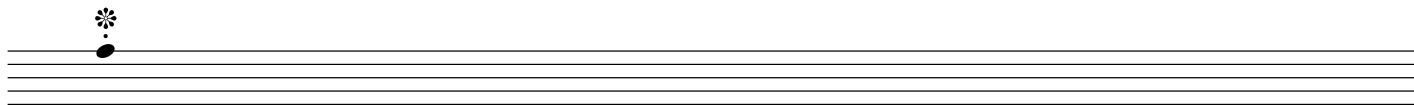
40:00

40:50



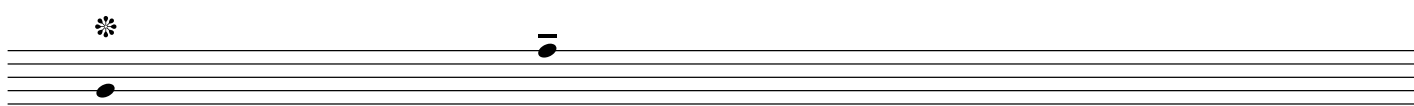
40:50

41:40



41:40

42:30



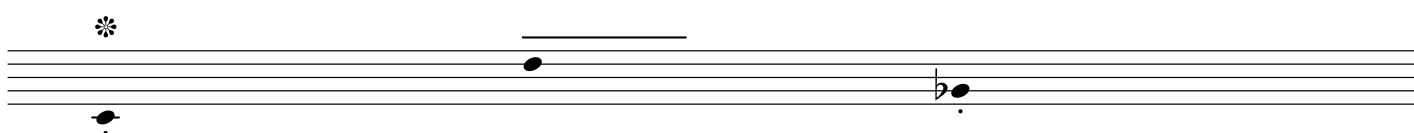
42:30

43:20



43:20

44:10



44:10

45:00



6  
45:00

45:50

A musical staff with five lines. A flat symbol (b) is positioned on the first line. A solid black dot (note) is placed on the first line, directly below the flat symbol.

45:50

46:40

A musical staff with five lines. A solid black dot (note) is on the first line. A small asterisk symbol is positioned above the first line. A second solid black dot (note) is on the second line.

46:40

47:30

A musical staff with five lines. A solid black dot (note) is on the first line. A small asterisk symbol is positioned above the first line.

47:30

48:20

A musical staff with five lines. A solid black dot (note) is on the first line. A small asterisk symbol is positioned above the first line. A second solid black dot (note) is on the second line. A third solid black dot (note) is on the fourth line, with a flat symbol (b) positioned to its left.

48:20

49:10

A musical staff with five lines. A solid black dot (note) is on the second line.

49:10

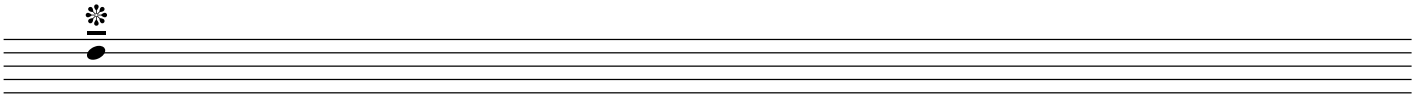
50:00

A musical staff with five lines. A solid black dot (note) is on the first line. A small asterisk symbol is positioned above the first line.

6

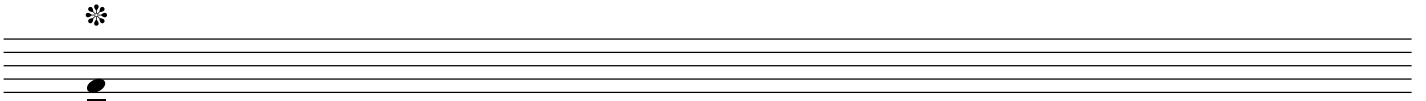
50:00

50:50



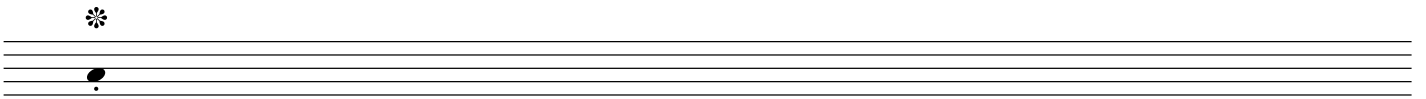
50:50

51:40



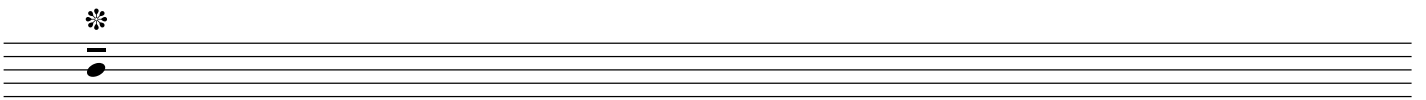
51:40

52:30



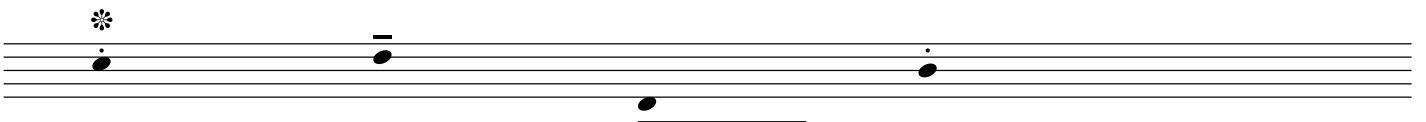
52:30

53:20



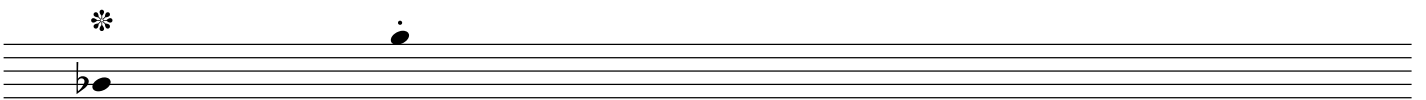
53:20

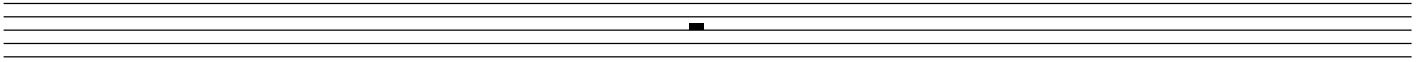
54:10



54:10

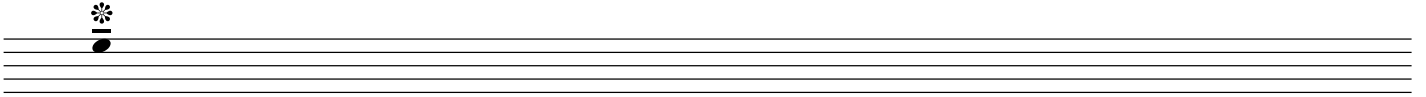
55:00





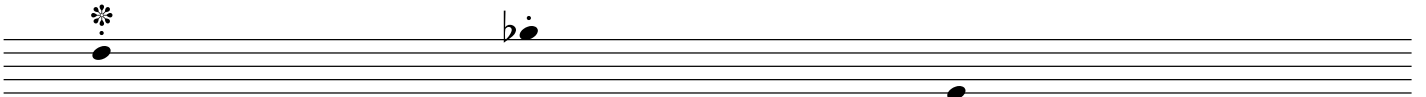
55:50

56:40



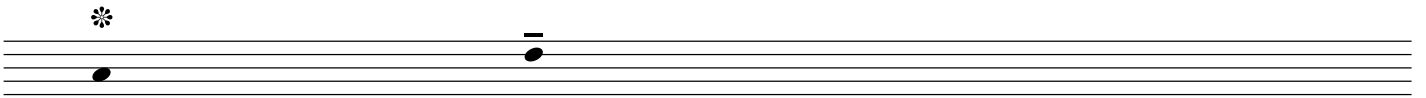
56:40

57:30



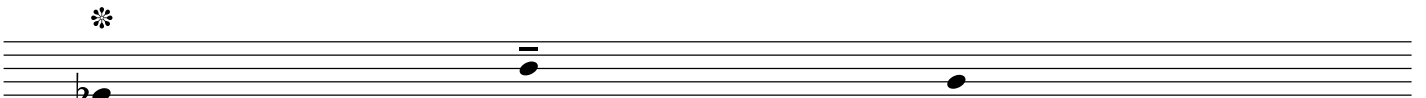
57:30

58:20



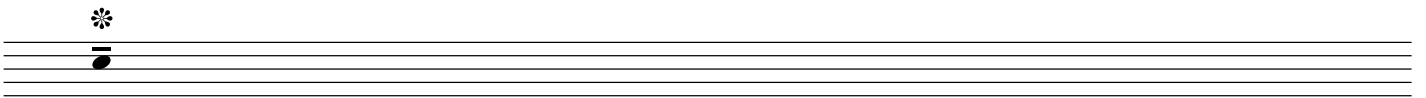
58:20

59:10



59:10

60:00





pitches 7 time sections of 100 seconds. the sounds follow each other without longer pauses if there are more than two sounds in one section.

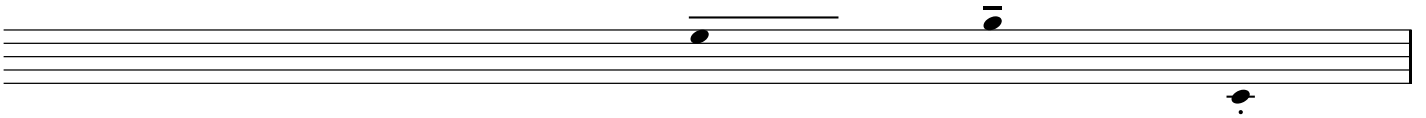
0:00

1:40



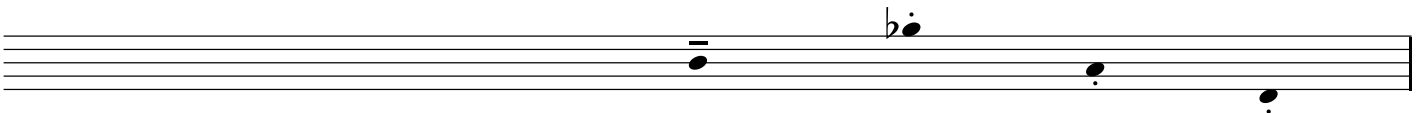
1:40

3:20



3:20

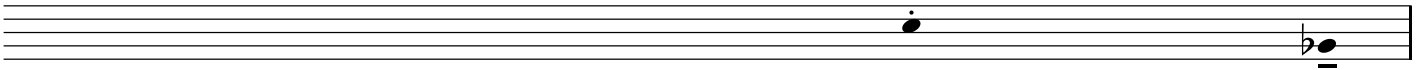
5:00



7

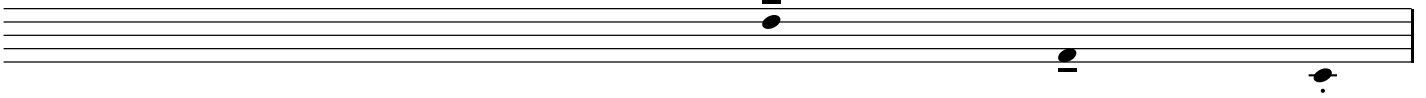
5:00

6:40



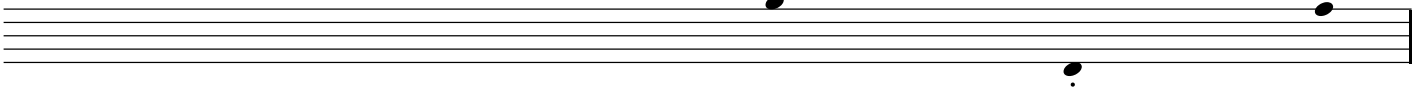
6:40

8:20



8:20

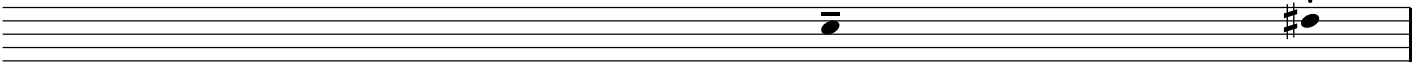
10:00



7

10:00

11:40



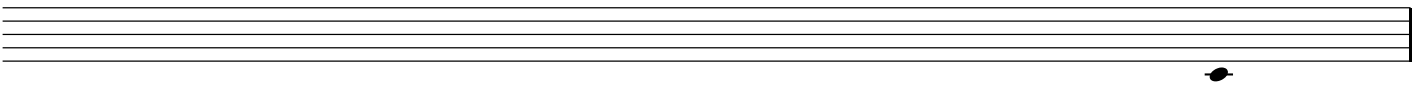
11:40

13:20



13:20

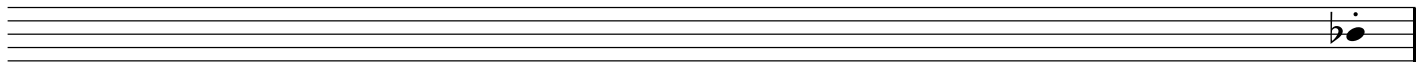
15:00



7

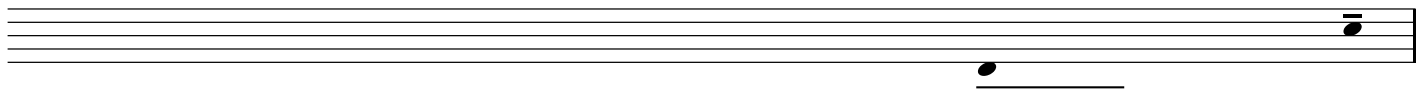
15:00

16:40



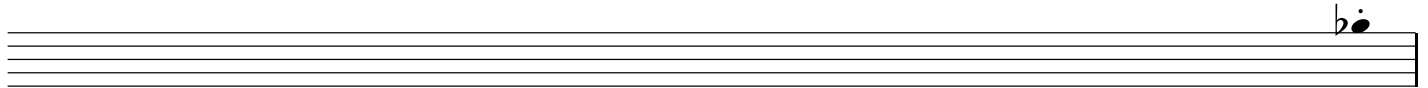
16:40

18:20



18:20

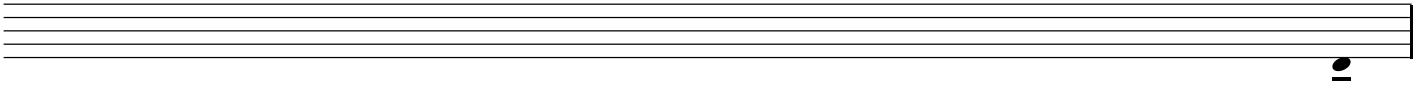
20:00



7

20:00

21:40



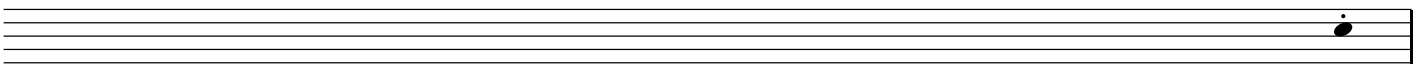
21:40

23:20



23:20

25:00



7

25:00

26:40



26:40

28:20



28:20

30:00



7

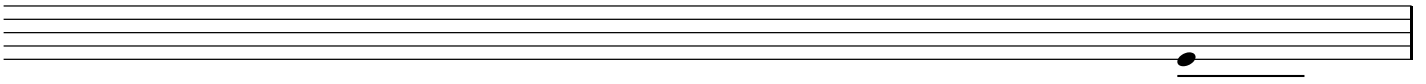
30:00

31:40



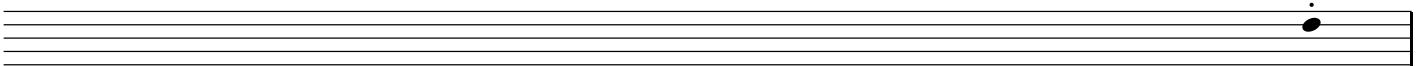
31:40

33:20



33:20

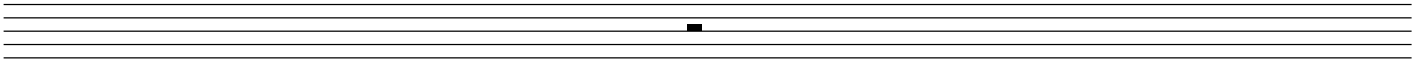
35:00



7

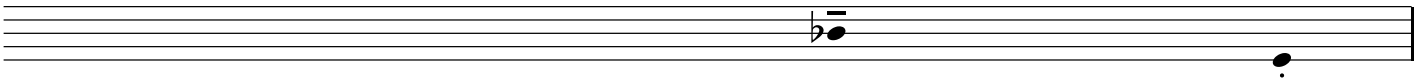
35:00

36:40



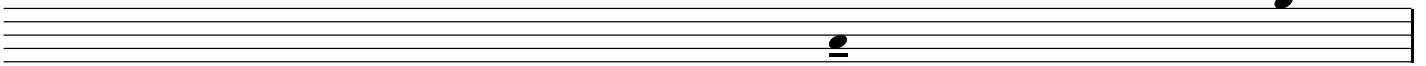
36:40

38:20



38:20

40:00

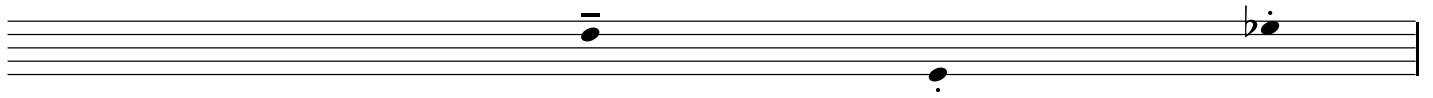




7

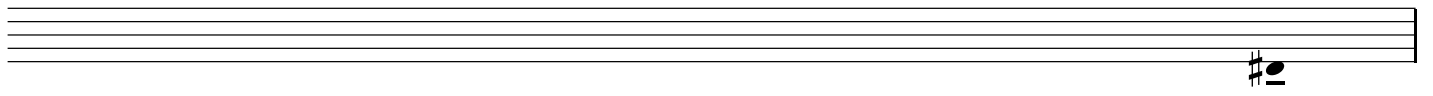
40:00

41:40



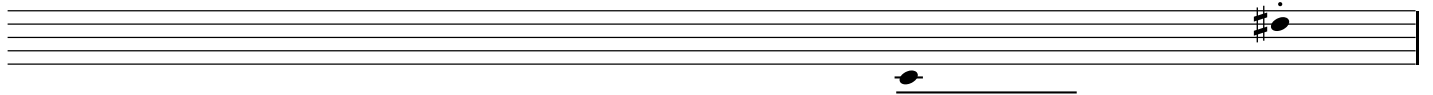
41:40

43:20



43:20

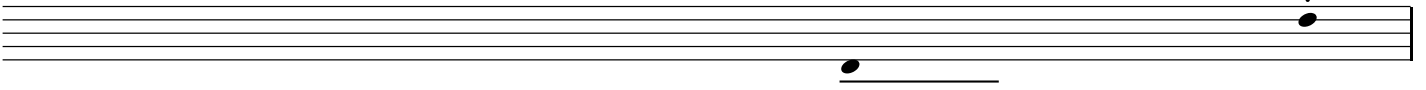
45:00



7

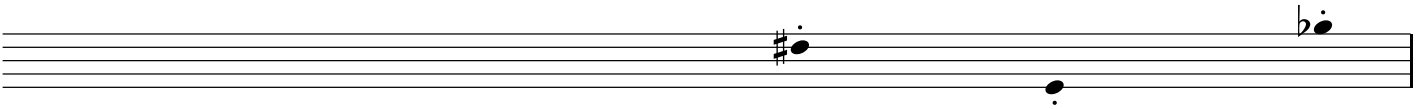
45:00

46:40



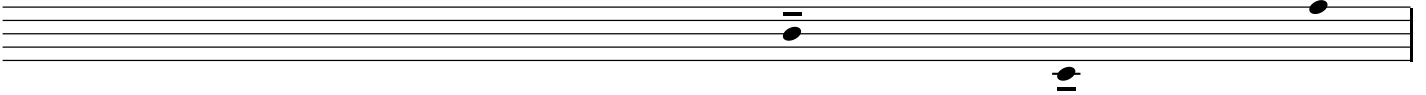
46:40

48:20



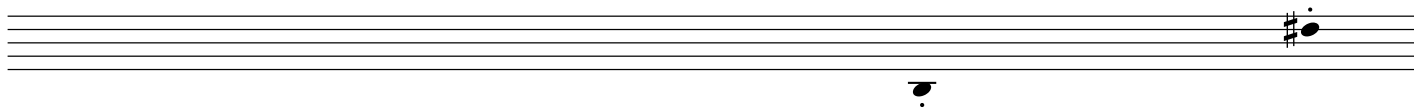
48:20

50:00



50:00

51:40



51:40

53:20



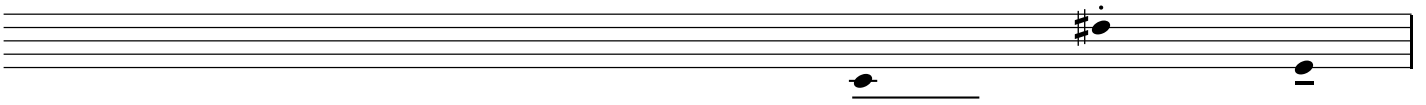
53:20

55:00



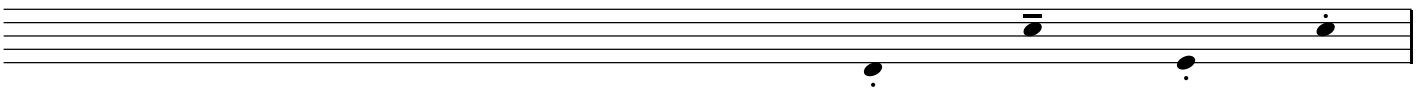
55:00

56:40



56:40

58:20



58:20

60:00

