

**in drei sätzen**

für kontrabass

(5 saiten)

eva-maria houben

2003

in drei sätzen  
für kontrabass

eva-maria houben  
2003

jeder klang ein ruhiger, sehr langsamer bogenstrich (etwa 30 sec.). sehr leise (ppp).

die klänge schließen unmittelbar aneinander an: auf- und abstrich im steten wechsel. die art des ersten strichs ist zu beginn eines satzes frei.

es gibt keine pause in einem satz.

vorzeichen gelten nur einmal für die note, vor der sie stehen.

1  
↓ :  $\frac{1}{16}$ -ton tiefer.  
2  
↓ :  $\frac{2}{16}$ -ton tiefer.  
3  
↓ :  $\frac{3}{16}$ -ton tiefer usf.  
↓

im dritten satz ist die vierte saite herabgestimmt auf etwa klingend  $G_2/A_2$ . evtl. ist diese schlaffe saite noch langsamer zu streichen. evtl. leise warten, bis die schwingung einsetzt.

das stück dauert etwa eine stunde.

**in drei sätzen**  
for double bass  
(5 strings)

eva-maria houben  
2003

in drei sätzen  
for double bass

eva-maria houben  
2003

each sound a quiet slow bow (~30 seconds).

very soft.

sounds directly follow each other: up and down – continuously,  
without any pause.

the first bow of a movement you change freely (up or down).

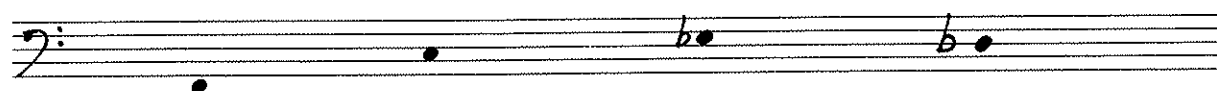
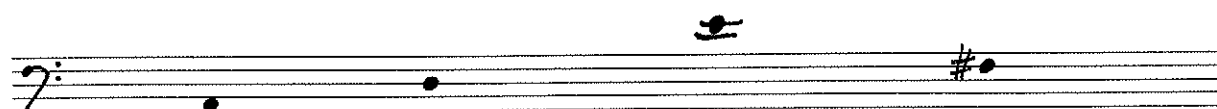
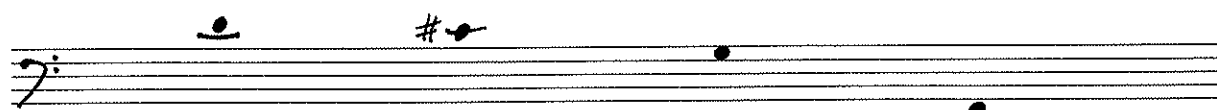
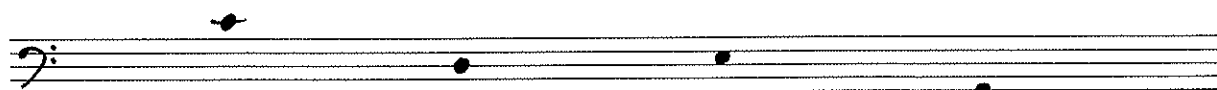
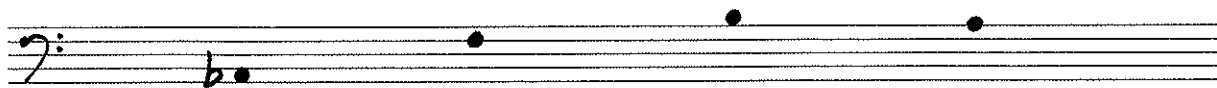
accidentals are valid only before the single note.

1  
↓ :  $\frac{1}{16}$  deeper.  
2  
↓ :  $\frac{2}{16}$  deeper  
3  
↓ :  $\frac{3}{16}$  deeper – and so on.  
↓

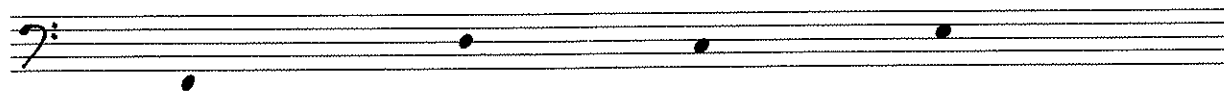
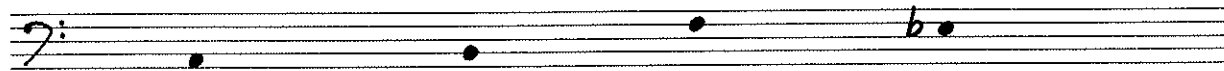
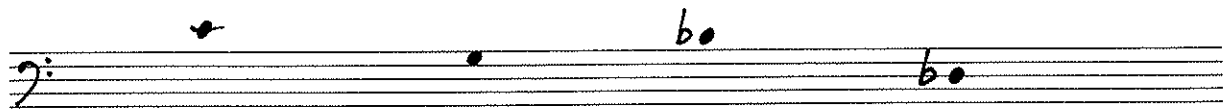
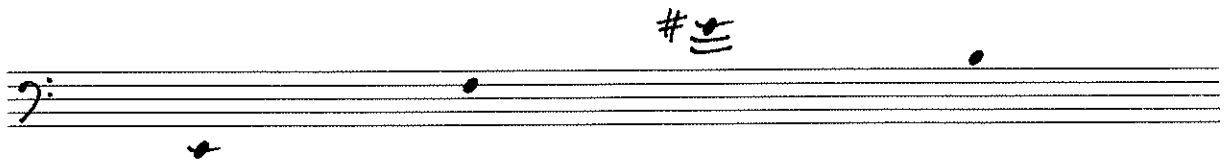
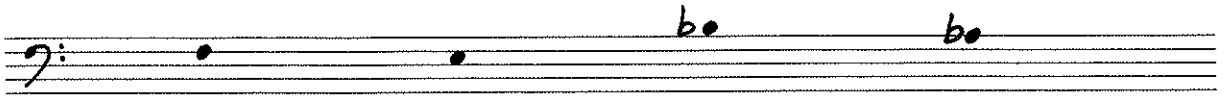
in the third movement the fourth string is intonated  $G_2/A_2$  (skor-  
datur). there nearly is no definite sound, nearly noise.

duration of all three movements: 1 hour.

I



1



II

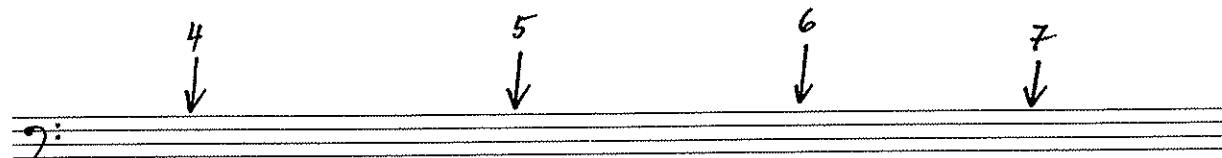
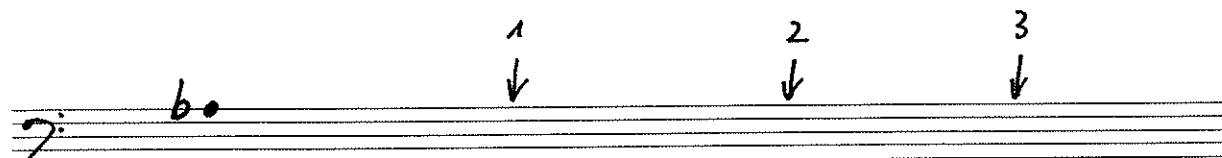
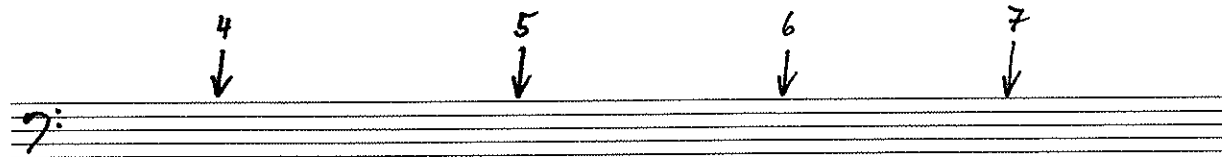
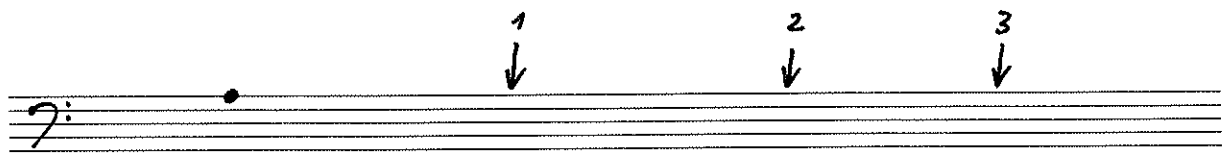
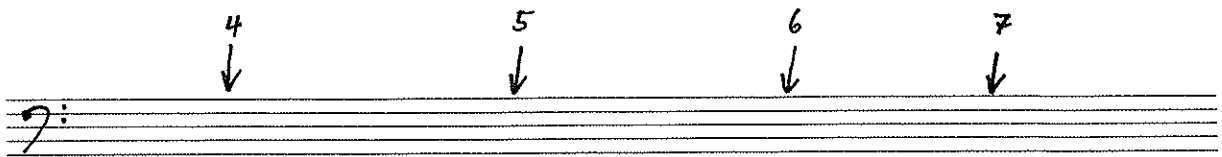
Handwritten musical staff with a bass clef. A dot is placed on the first line. Three downward-pointing arrows are positioned above the staff, labeled with the numbers 1, 2, and 3.

Handwritten musical staff with a bass clef. Four downward-pointing arrows are positioned above the staff, labeled with the numbers 4, 5, 6, and 7.

Handwritten musical staff with a bass clef. A dot is placed on the first line. Three downward-pointing arrows are positioned above the staff, labeled with the numbers 1, 2, and 3.

Handwritten musical staff with a bass clef. Four downward-pointing arrows are positioned above the staff, labeled with the numbers 4, 5, 6, and 7.

Handwritten musical staff with a bass clef. A flat sign (b) is placed on the first line. Three downward-pointing arrows are positioned above the staff, labeled with the numbers 1, 2, and 3.





III

