

haikus

eva-maria houben

2003/2004

die *haikus* sind eine sammlung von solostimmen für unterschiedliche instrumente. die stimmen können einzeln oder in unterschiedlichen kombinationen nacheinander (in beliebiger reihenfolge) oder gleichzeitig aufgeführt werden. werden mehrere *haikus* gleichzeitig aufgeführt, so heißt das stück *haiku zu zweit* (z. B. *I, III*), *haiku zu dritt* (z. B. *I, II, IV*) oder *haiku zu viert* (z. B. *I, II, III, V*). die entsprechenden (römischen) ziffern, die das instrument angeben, sind im titel mit anzuführen.

the *haikus* are a collection of solo pieces for several kind of instruments: the pieces may be played as solo works or in different combination of instruments – following each other in free order – or all simultaneously.

in case several *haikus* are played simultaneously, the performance is called *haiku for two* (for example *I, III*), or *haiku for three* (for example *I, II, IV*) or *haiku for four* (for example *I, II, III, V*). in the programme the numbers (VI, I, X etc.) are indicated in the title.

haiku III
für posaune
for trombone

eva-maria houben
2003

haiku III
für posaune

eva-maria houben
2003

✕ : ein klang, der immer gerade eben nur da war.
er ist sehr kurz, fast unhörbar leise und enthält geräuschanteile,
vor allem bei der ansprache.

• : eine ruhige ausatmung, mindestens sieben sekunden lang. leise.

1 ♭ : $\frac{1}{16}$ -ton tiefer

2 ♭ : $\frac{2}{16}$ -ton tiefer

und so fort.

sehr ruhig, ohne tempo.
zeit lassen zwischen den klängen.

das stück dauert 45 minuten.

haiku III

for trombone

eva-maria houben

2003

✕ : a sound which appears while disappearing.

very short, nearly inaudible. Noisy, in particular during the settling process.

• : a quiet breath, at least for seven seconds. soft.

1 √ : $\frac{1}{16}$ -tone lower

2 √ : $\frac{2}{16}$ -tone lower

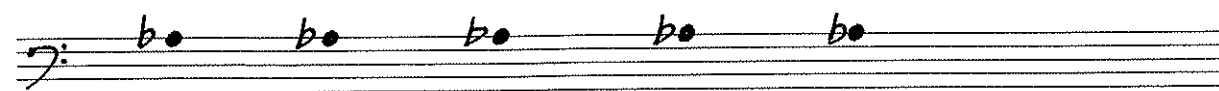
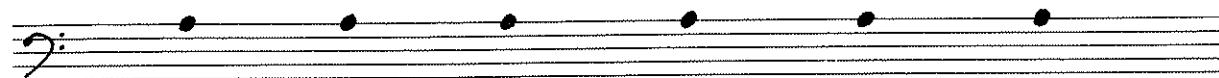
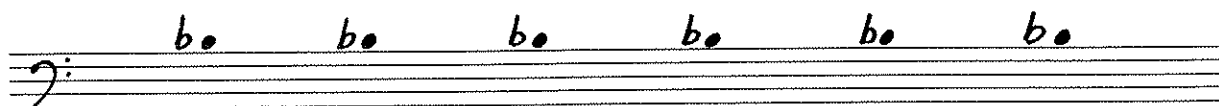
and so on.

very calm, without any tempo („senza tempo“).

take up time from sound to sound.

duration: 45 minutes.

[0:00]



[15:00]

[15:00]

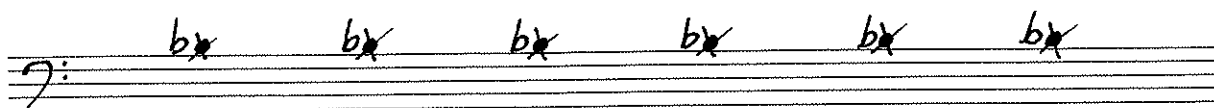
A musical staff in bass clef with a colon. It contains six flats (b) on the first line. Below the staff are five downward-pointing arrows labeled 1 through 5, positioned under the second through sixth flats respectively.

A musical staff in bass clef with a colon. It contains two flats (b) on the first line, followed by three dots on the first line. Below the staff are five downward-pointing arrows labeled 6, 7, 1, 2, and 3, positioned under the two flats and the first three dots respectively.

A musical staff in bass clef with a colon. It contains four dots on the first line, followed by one flat (b) on the first line. Below the staff are four downward-pointing arrows labeled 4, 5, 6, and 7, positioned under the four dots respectively.

[30:00]

[30:00]



[45:00]