

haikus

eva-maria houben

2003/2004

die *haikus* sind eine sammlung von solostimmen für unterschiedliche instrumente. die stimmen können einzeln oder in unterschiedlichen kombinationen nacheinander (in beliebiger reihenfolge) oder gleichzeitig aufgeführt werden. werden mehrere *haikus* gleichzeitig aufgeführt, so heißt das stück *haiku zu zweit* (z. B. *I, III*), *haiku zu dritt* (z. B. *I, II, IV*) oder *haiku zu viert* (z. B. *I, II, III, V*). die entsprechenden (römischen) ziffern, die das instrument angeben, sind im titel mit anzuführen.

the *haikus* are a collection of solo pieces for several kind of instruments: the pieces may be played as solo works or in different combination of instruments – following each other in free order – or all simultaneously.

in case several *haikus* are played simultaneously, the performance is called *haiku for two* (for example *I, III*), or *haiku for three* (for example *I, II, IV*) or *haiku for four* (for example *I, II, III, V*). in the programme the numbers (VI, I, X etc.) are indicated in the title.

haiku XI
für violine
for violin

eva-maria houben
2004

haiku XI
für violine

eva-maria houben
2004

abschnitt 1 (s. 1, 5, 9):
ein kaum hörbarer ton.
auf einem bogenstrich, so lang wie möglich.
irgendwann in der angegebenen zeit.

abschnitt 2 (s. 2-4):
die klänge in der angegebenen zeit spielen (5:00 – 8:00; 11:00 –
14:00; 17:00 – 20:00).
♪ = 48 MM.
leise.

abschnitt 3 (s. 6-8):
♪ = 12 MM.
leise.

das stück dauert 45 minuten.

haiku XI
for violin

eva-maria houben
2004

section 1 (p. 1, 5, 9):
a sound nearly audible.
one single bow, as long as possible.
at any time in the given section.

section 2 (p. 2-4):
play the sounds in the given time (5:00 – 8:00; 11:00 – 14:00;
17:00 – 20:00).
♪ = 48 MM.
soft.

section 3 (p. 6-8):
♪ = 12 MM.
soft.

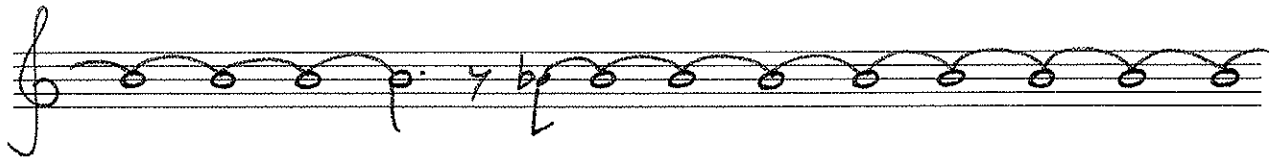
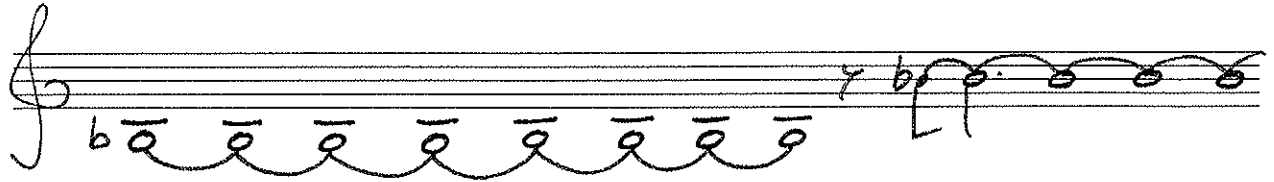
duration: 45 minutes.

0:00

ein kaum hörbarer ton.

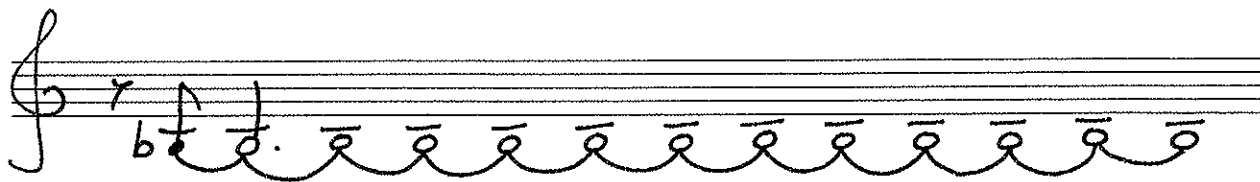
5:00

5:00



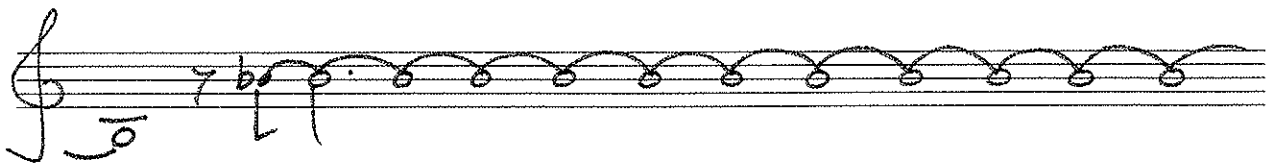
8:00

11:00



14:00

17:00



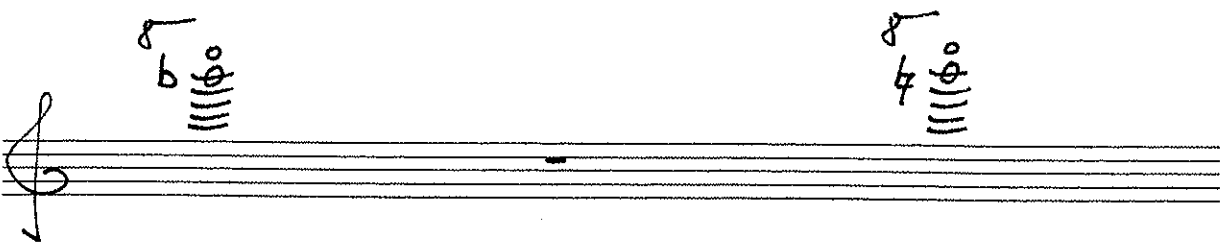
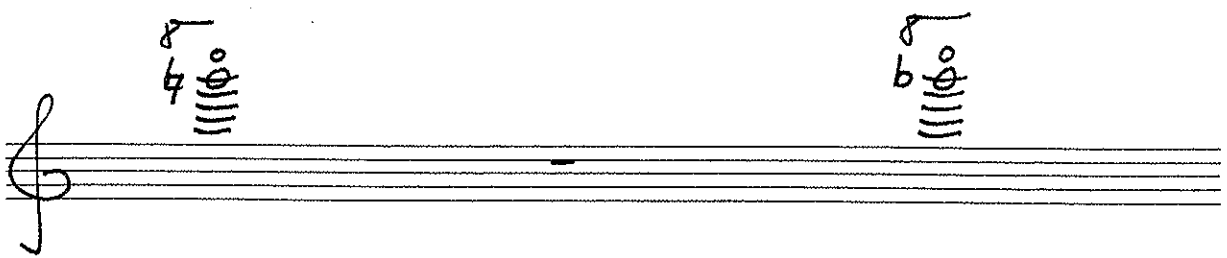
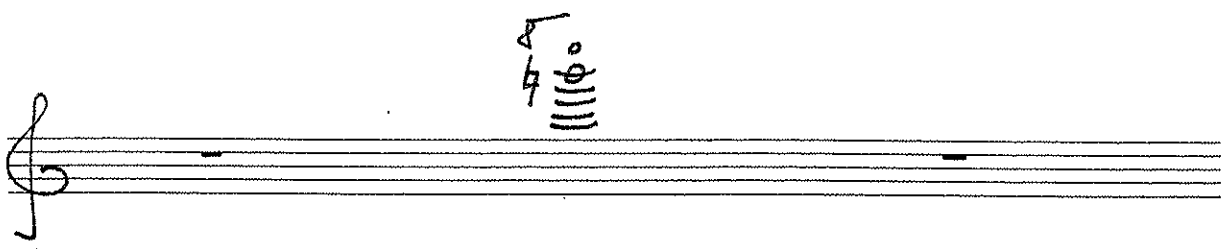
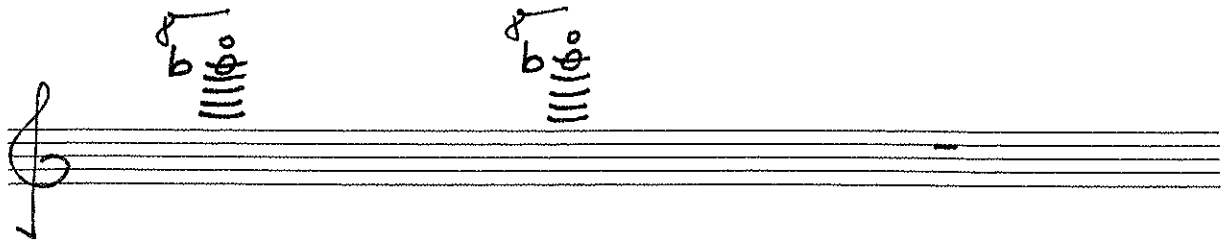
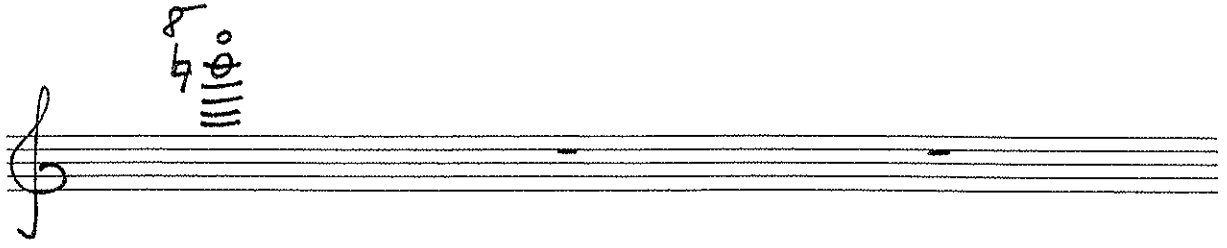
20:00

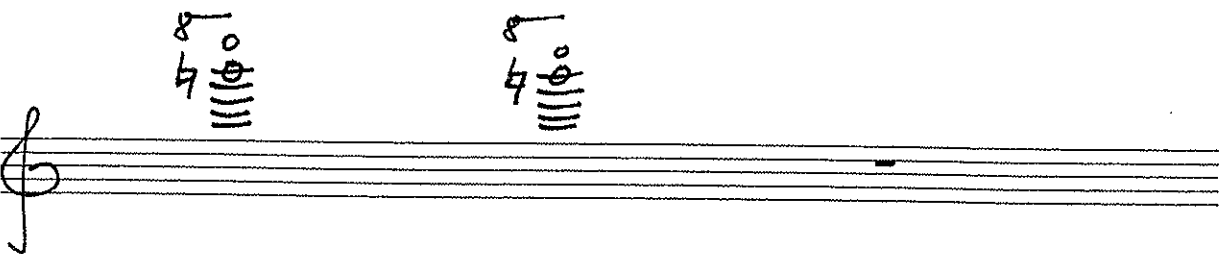
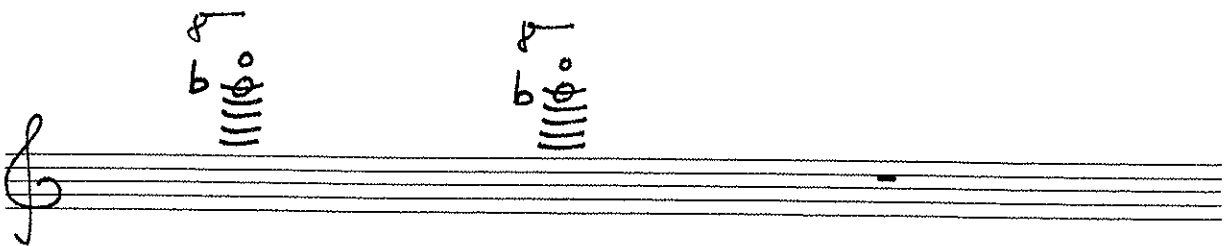
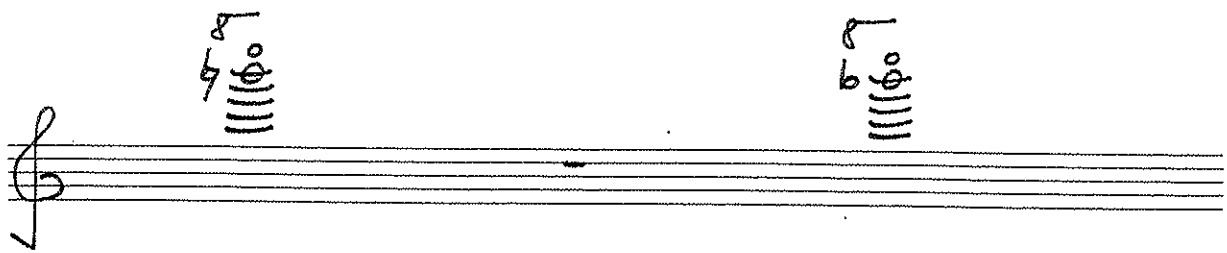
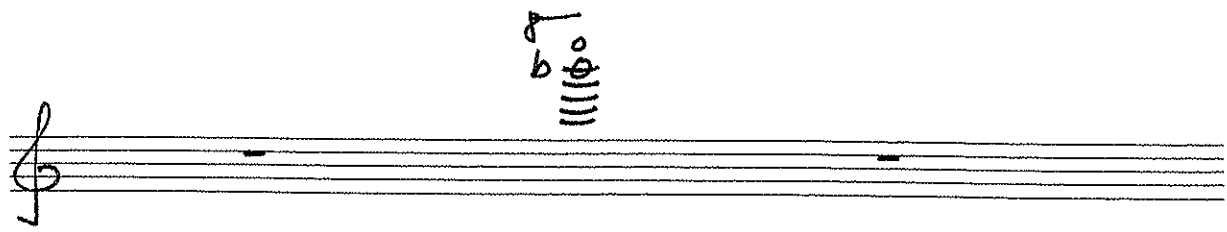
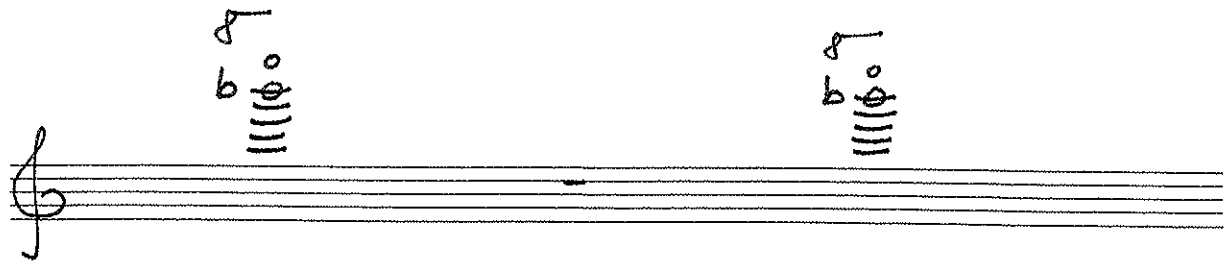
20:00

ein kaum hörbarer ton.

25:00

25:00





40:00

40:00

ein kaum hörbarer ton.

45:00