

**eins ums andre**

für klarinette, marimba, claves und akkordeon

for clarinet, marimba, claves and accordion

eva-maria houben

2003

eins ums andre

für klarinette, marimba, claves und akkordeon

for clarinet, marimba, claves and accordion

eva-maria houben

2003

klarinette, marimba, claves:

sechs abschnitte von jeweils fünf minuten. die claves spielen zweimal in jedem abschnitt einen klang, irgendwann.

viel zeit lassen zwischen den klängen von klarinette, marimba und claves.

klarinette:

ein klang – eine ruhige ausatmung, etwa fünf sekunden lang.

fast unhörbar leise.

marimba:

fast unhörbar leise.

claves:

ein kurzer, sehr leiser klang. nie gleichzeitig mit klarinette oder marimba.

akkordeon:

die töne werden gleichzeitig links und rechts gespielt.

registerangaben:

o o : auf beiden seiten offenes register.

c o : links geschlossen, rechts offen.

c c : auf beiden seiten geschlossenes register.

alle klänge fast unhörbar leise.

balgwechsel sollten nahezu unmerklich geschehen. die kontinuierlichkeit des klanges sollte nach möglichkeit erhalten bleiben.

dauer: 45 minuten.

clarinet, marimba, claves:

six sections, duration in each case five minutes. claves play twice in each section, at some time or other.

take your time between the sounds of clarinet, marimba and claves.

clarinet:

one sound – one quiet breath, about five seconds.

nearly inaudibly soft.

marimba:

nearly inaudibly soft.

claves:

a short, very soft sound. at no time simultaneously with clarinet or marimba.

accordion:

sounds are produced simultaneously at the left and right side.

register indications:

o o : at both sides open.

c o : at the left side closed, at the right side open.

c c : at both sides closed register.

all sounds are nearly imperceptible.

bellow changes nearly imperceptible.

keep the continuity of the sound.

duration: 45 minutes.

[0:00]

A musical staff in treble clef with a key signature of one sharp (F#). It contains three notes: a quarter note on the first line (F#), a quarter note on the second space (G), and a quarter note on the third space (A). Below the staff are three labels: 'mar' under the first note, 'mar' under the second note, and 'mar' under the third note. Above the first note is a handwritten symbol consisting of three horizontal lines with a dot above them.

A musical staff in treble clef with a key signature of one flat (Bb). It contains three notes: a quarter note on the first space (Bb), a quarter note on the second space (C), and a quarter note on the third space (D). Below the staff are three labels: 'klar' under the first note, 'klar' under the second note, and 'mar' under the third note. Above the first note is a handwritten symbol consisting of a flat sign and a note head. Above the third note is a handwritten symbol consisting of three horizontal lines with a dot above them.

A musical staff in treble clef with a key signature of one flat (Bb). It contains four notes: a quarter note on the second space (C), a quarter note on the first space (Bb), a quarter note on the second space (C), and a quarter note on the first space (Bb). Below the staff are four labels: 'klar' under the first note, 'mar' under the second note, 'mar' under the third note, and 'klar' under the fourth note. Above the first note is a handwritten symbol consisting of three horizontal lines with a dot above them. Above the second note is a handwritten symbol consisting of a flat sign and a note head.

[5:00]

[5:00]

A musical staff in treble clef with three notes. The first note is a dotted quarter note on the second line (G4) with a sharp sign above it, labeled 'mar' below. The second note is a dotted quarter note on the first space (F4) with a sharp sign above it, labeled 'klar' below. The third note is a dotted quarter note on the first space (F4) with a flat sign above it, labeled 'klar' below.

A musical staff in treble clef with three notes. The first note is a dotted quarter note on the second line (G4) with a sharp sign above it, labeled 'mar' below. The second note is a dotted quarter note on the third line (A4) with a sharp sign above it, labeled 'mar' below. The third note is a dotted quarter note on the first space (F4) with a flat sign above it, labeled 'klar' below.

A musical staff in treble clef with four notes. The first note is a dotted quarter note on the second line (G4) with a sharp sign above it, labeled 'mar' below. The second note is a dotted quarter note on the first space (F4) with a flat sign above it, labeled 'klar' below. The third note is a dotted quarter note on the second line (G4), labeled 'klar' below. The fourth note is a dotted quarter note on the first space (F4) with a sharp sign above it, labeled 'mar' below.

[10:00]

[10:00]

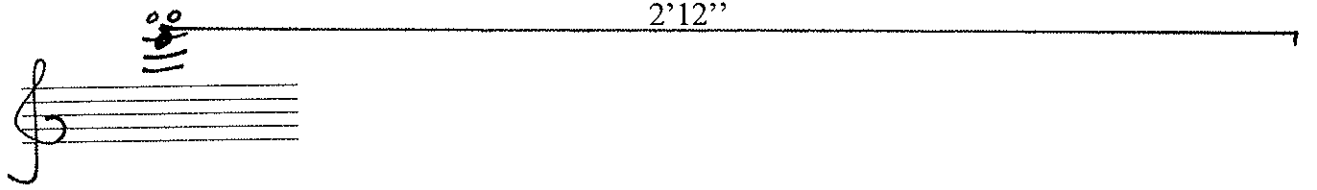
A musical staff in treble clef with three notes. The first note is a cluster of three notes on the top line, with the word "klar" below it. The second note is a cluster of three notes on the middle line, with the word "klar" below it. The third note is a single note on the top line, with the word "klar" below it.

A musical staff in treble clef with three notes. The first note is a single note on the top line with a flat symbol (b) above it, with the word "klar" below it. The second note is a single note on the middle line, with the word "mar" below it. The third note is a single note on the top line with a sharp symbol (#) above it, with the word "mar" below it.

A musical staff in treble clef with four notes. The first note is a single note on the bottom line, with the word "mar" below it. The second note is a single note on the middle line, with the word "klar" below it. The third note is a single note on the top line with a flat symbol (b) above it, with the word "klar" below it. The fourth note is a single note on the top line, with the word "mar" below it.

[15:00]

[15:00]



akk



[17:12]

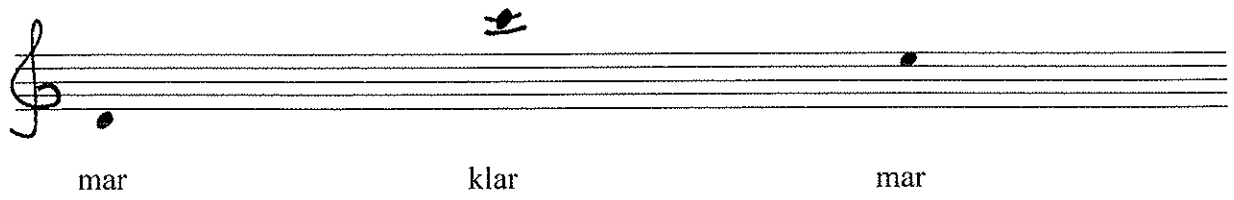
klar mar klar

klar klar mar

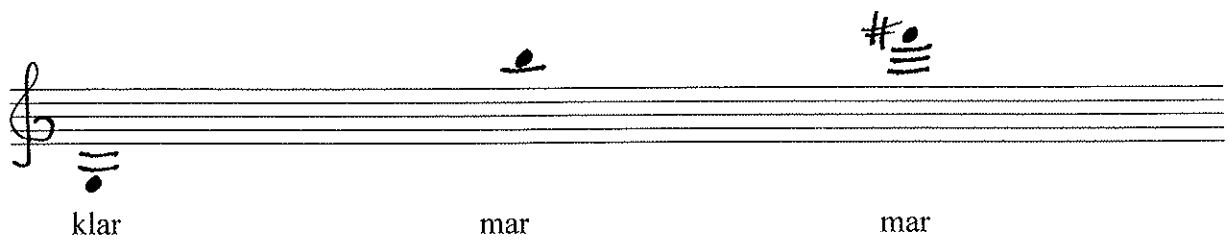
mar klar mar klar

[22:12]

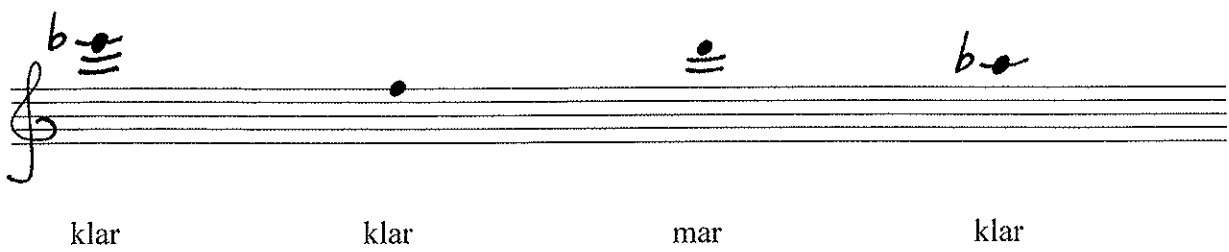
[22:12]



A musical staff in treble clef with three notes. The first note is on the first line (F4) with the lyric 'mar' below it. The second note is on the second line (G4) with the lyric 'klar' below it. The third note is on the second space (A4) with the lyric 'mar' below it.



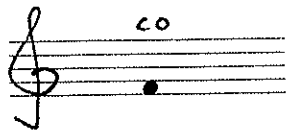
A musical staff in treble clef with three notes. The first note is on the first space (E4) with the lyric 'klar' below it. The second note is on the second line (G4) with the lyric 'mar' below it. The third note is on the second space (A4) with a sharp sign (#) above it and the lyric 'mar' below it.



A musical staff in treble clef with four notes. The first note is on the first space (E4) with a flat sign (b) above it and the lyric 'klar' below it. The second note is on the first line (F4) with the lyric 'klar' below it. The third note is on the second line (G4) with the lyric 'mar' below it. The fourth note is on the second space (A4) with a flat sign (b) above it and the lyric 'klar' below it.

[27:12]

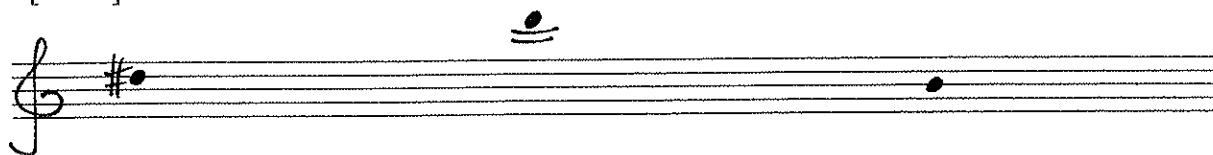
[27:12]



akk

4'12''

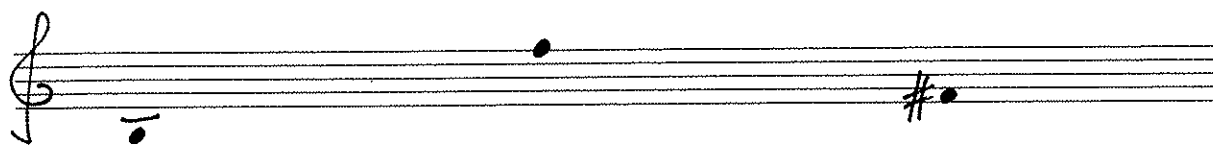
[31:24]



mar

klar

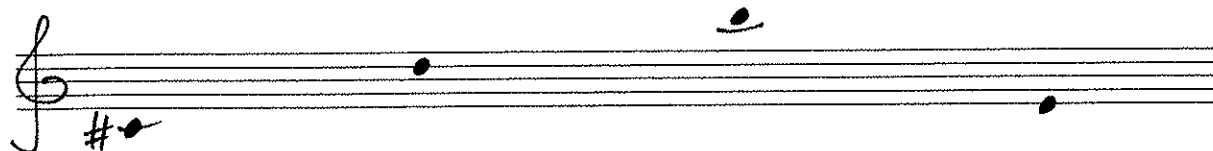
mar



mar

klar

mar



mar

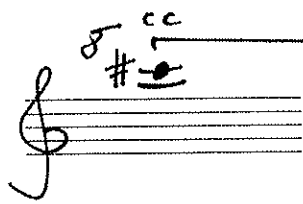
klar

klar

mar

[36:24]

[36:24]



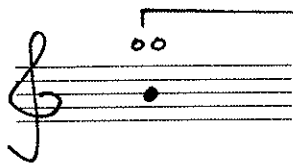
2'36''

akk



1'

[40:00]



akk

5'

[45:00]