

fast alle
für 12 unterschiedliche instrumente
nearly all
for 12 different instruments

eva-maria houben

2004

fast alle

für 12 unterschiedliche instrumente

nearly all

for 12 different instruments

eva-maria houben

2004

20 sekunden zeit für stille, 20 sekunden zeit für klang.

die tabelle verzeichnet schweigen:

die instrumente werden nummeriert (von 1 bis 12), und die zahlen geben an, welches instrument in einem jeweiligen klangabschnitt **nicht spielt**. „2“ heißt z. B.: instrument nr. 2 tacet; die angabe „tutti“ bedeutet: tutti tacent (dies ist ein stille-abschnitt).

in den klang-abschnitten werden die angegebenen intervale gespielt.

jeder spieler spielt insgesamt 30 unterschiedliche intervale.

wer nicht schweigt, spielt ein intervall pro klangabschnitt.

beim spielen eines klang-abschnitts setzt der einzelne spieler frei ein, hört er frei auf.

ein klang: weder kurz noch lang.

die oktavlage ist frei, die intervallrichtung (aufwärts $\cdot \cdot \cdot \cdot$, abwärts $\cdot \cdot \cdot \cdot$) wird beibehalten.

jeden klang einzeln für sich spielen, dabei den zusammenhang des intervalls bewahren.

dauer: 24 minuten.

20 seconds: no sound – 20 seconds: sound anytime.

the schedule indicates silence:

the instruments are numbered (1 – 12) and the numbers indicate which instrument **does not play** in the given time section. “2” for example means: the instrument with the number 2 does not play – tacet. “tutti” means: all instruments remain silent, nobody plays (this is a section of silence).

during the sections with sound the indicated intervals are played.

each player plays 30 different intervals.

the player who does not remain silent plays one interval per sound-section.

by playing the interval the player in each case enters freely, ends freely.

one sound: neither short nor long.

the register is free, but keep the direction of the given interval (upwards $\cdot \cdot \cdot \cdot \cdot$; downwards $\backslash \cdot \cdot \cdot \cdot$).

play each sound on its own, but maintain the interval.

duration: 24 minutes.

0:00	0:20	0:40	1:00	1:20	1:40
tutti	2	tutti	11	tutti	1
	6				3
					9

2:00	2:20	2:40	3:00	3:20	3:40
tutti	11	tutti	8	tutti	5
	7				12

4:00	4:20	4:40	5:00	5:20	5:40
tutti	4	tutti	10	tutti	4
	8				7
	9				11

6:00	6:20	6:40	7:00	7:20	7:40
tutti	3	tutti	4	tutti	2
	6		8		5
					10

8:00	8:20	8:40	9:00	9:20	9:40
tutti	9	tutti	1	tutti	11
	3				

10:00	10:20	10:40	11:00	11:20	11:40
tutti	6	tutti	8	tutti	2
	7				
	12				

12:00	12:20	12:40	13:00	13:20	13:40
tutti	1	tutti	8	tutti	5
	3		10		
			12		

14:00	14:20	14:40	15:00	15:20	15:40
tutti	1	tutti	10	tutti	4
	6				5
					7

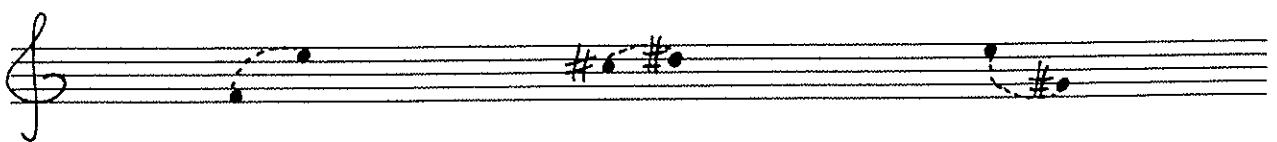
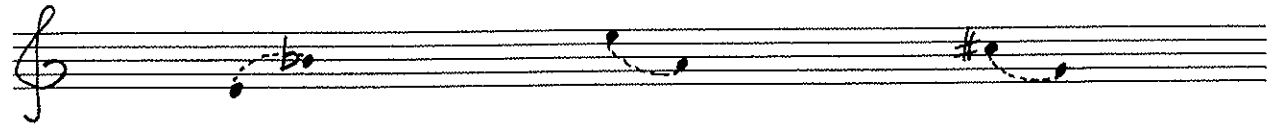
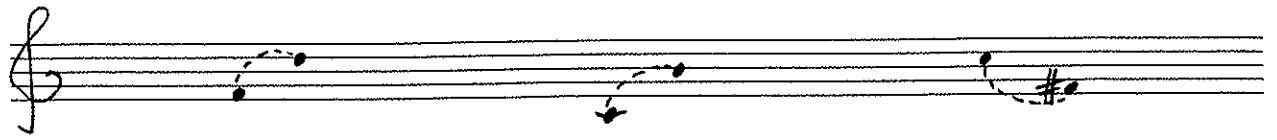
16:00	16:20	16:40	17:00	17:20	17:40
tutti	2	tutti	9	tutti	4
	6		11		
			12		

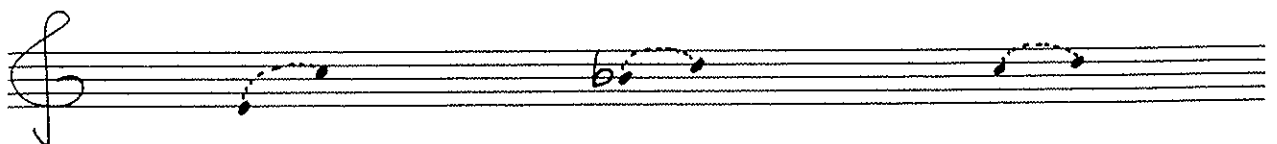
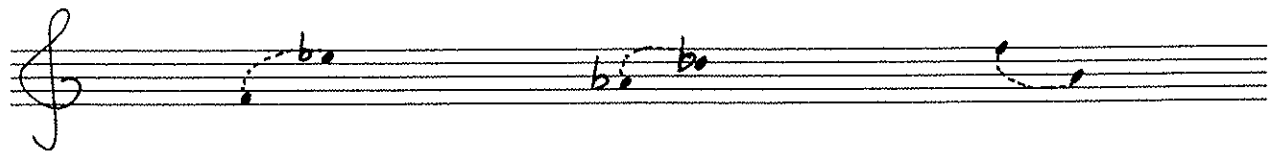
18:00	18:20	18:40	19:00	19:20	19:40
tutti	3	tutti	1	tutti	10
	5		7		
	9				

20:00	20:20	20:40	21:00	21:20	21:40
tutti	9	tutti	2	tutti	2
	12		10		5
					8

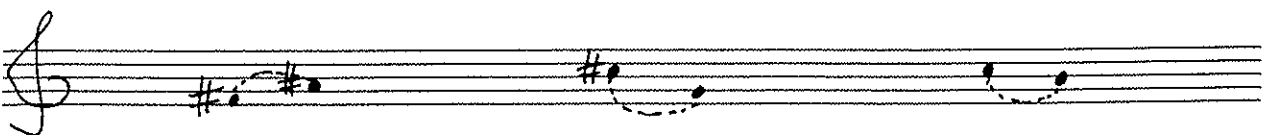
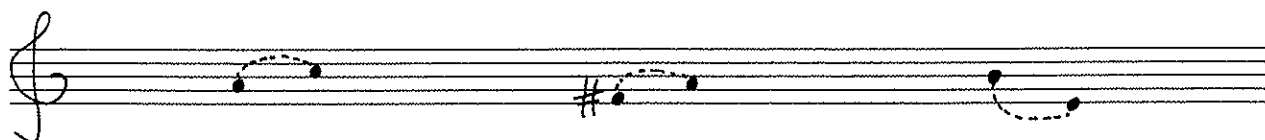
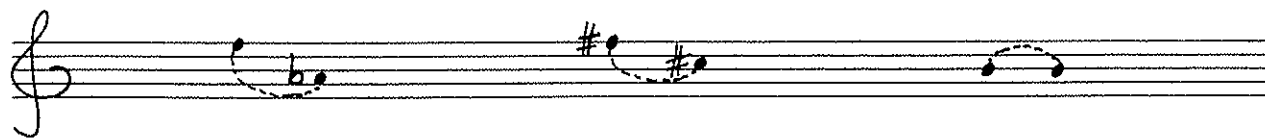
22:00	22:20	22:40	23:00	23:20	23:40
tutti	3	tutti	12	tutti	1
	6				4
	11				7

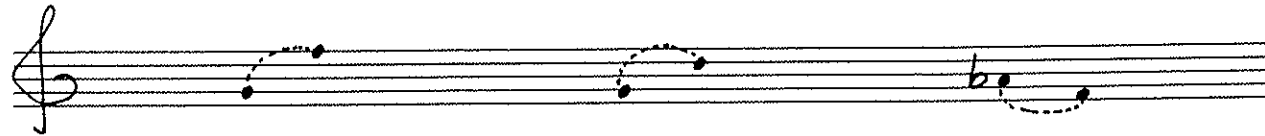
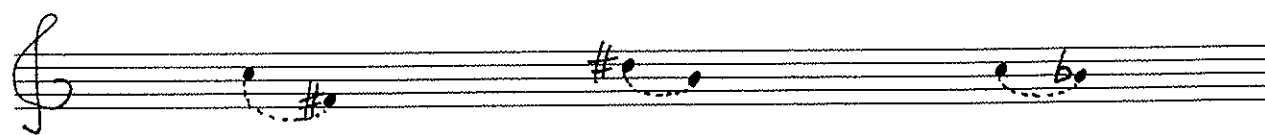
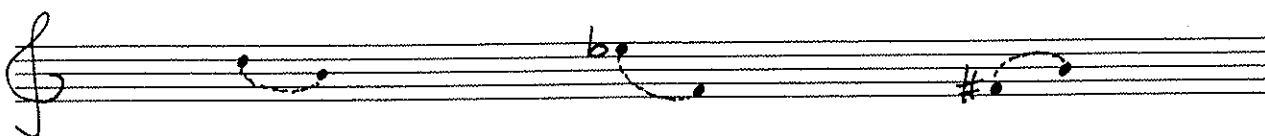
1



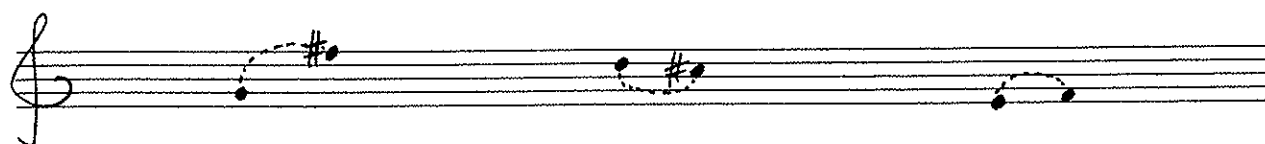


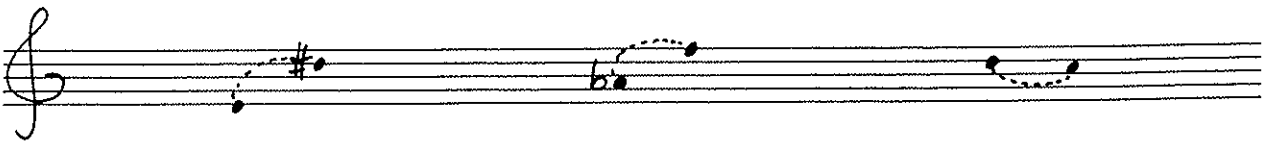
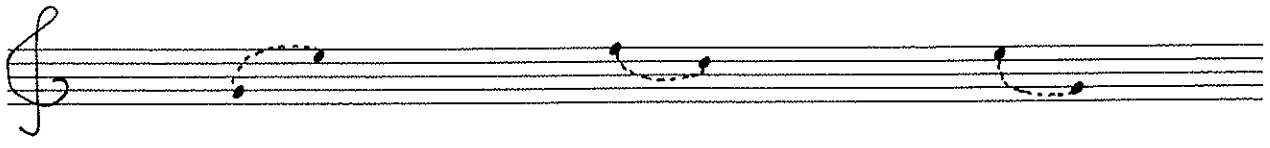
3



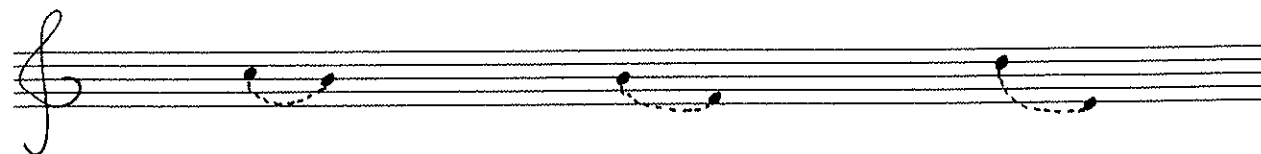
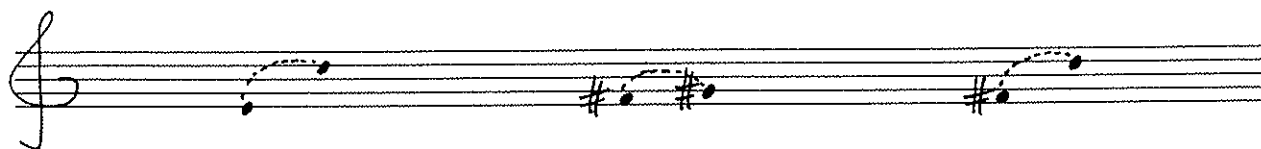


5

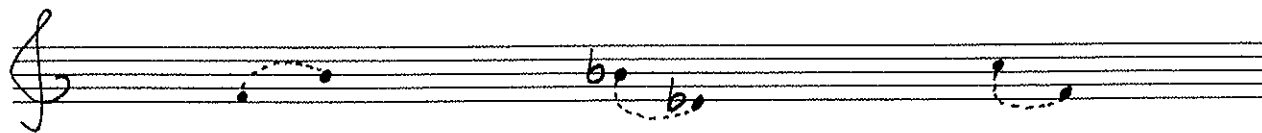
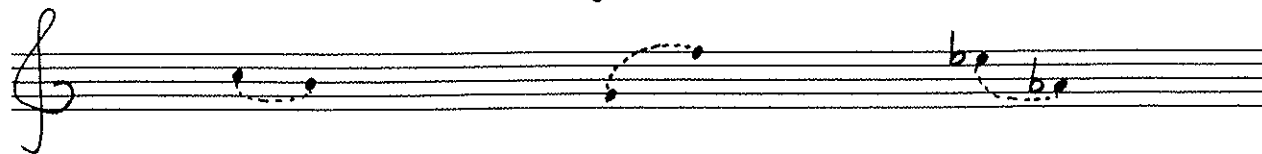




7



8



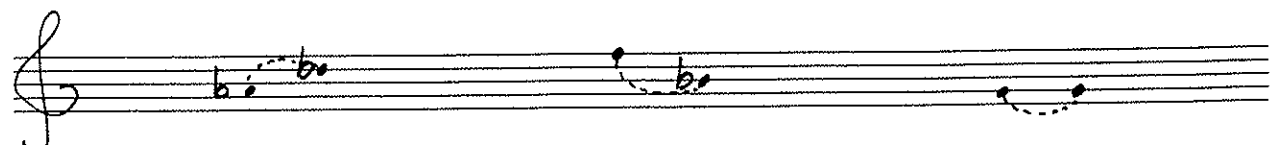
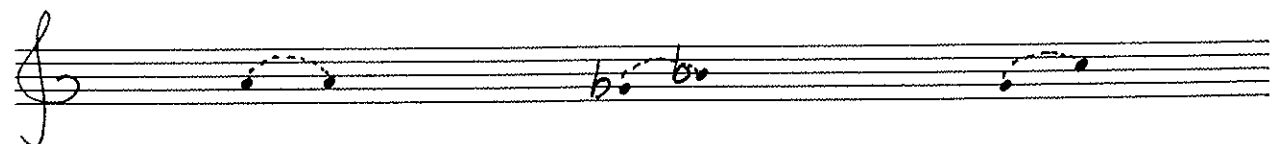
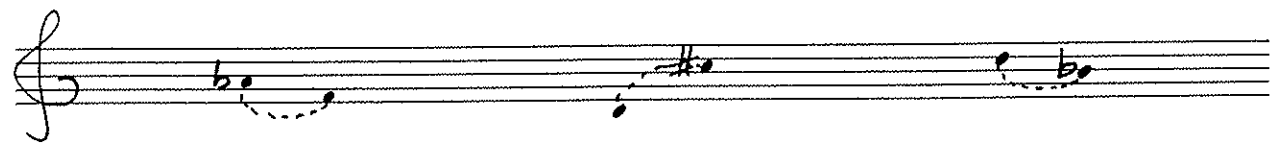
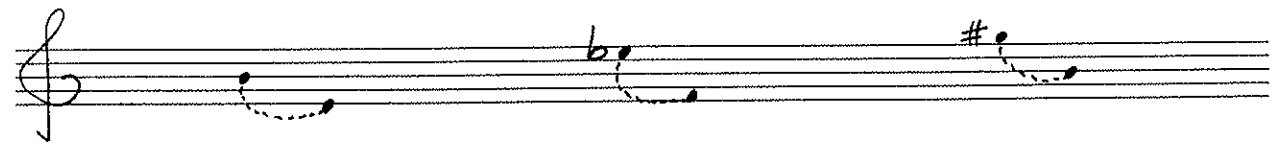
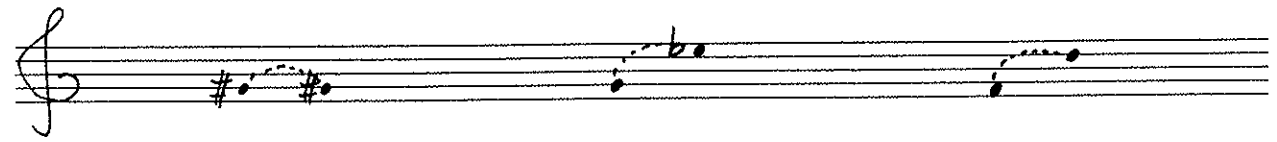
9

The image displays ten staves of handwritten musical notation in treble clef. Each staff contains three measures of music. The notation includes various note values (quarter notes, eighth notes), accidentals (sharps, flats), and slurs. The notes are connected by dashed lines, suggesting a specific rhythmic or melodic exercise. The accidentals used include natural, sharp, and flat symbols.

Staff	Measure 1	Measure 2	Measure 3
1	Quarter note, natural	Quarter note, sharp	Quarter note, natural
2	Quarter note, flat	Quarter note, natural	Quarter note, sharp
3	Quarter note, natural	Quarter note, flat	Quarter note, natural
4	Quarter note, natural	Quarter note, sharp	Quarter note, natural
5	Quarter note, natural	Quarter note, natural	Quarter note, natural
6	Quarter note, natural	Quarter note, flat	Quarter note, sharp
7	Quarter note, natural	Quarter note, sharp	Quarter note, flat
8	Quarter note, natural	Quarter note, sharp	Quarter note, sharp
9	Quarter note, flat	Quarter note, natural	Quarter note, sharp
10	Quarter note, natural	Quarter note, flat	Quarter note, flat

The image displays ten staves of handwritten musical notation, each beginning with a treble clef. The notation consists of various note patterns, including quarter notes, eighth notes, and sixteenth notes, often connected by slurs or beams. Accidentals such as flats (b) and sharps (#) are used to modify the notes. The patterns are as follows:

- Staff 1: A dotted quarter note, a quarter note, and a dotted quarter note with a flat.
- Staff 2: A dotted quarter note, a dotted quarter note with a flat, and a dotted quarter note.
- Staff 3: A dotted quarter note, a quarter note, and a dotted quarter note.
- Staff 4: A dotted quarter note with a flat, a quarter note, and a dotted quarter note with a flat.
- Staff 5: A dotted quarter note, a dotted quarter note with a sharp, and a dotted quarter note with a sharp.
- Staff 6: A dotted quarter note, a dotted quarter note with a sharp, and a dotted quarter note.
- Staff 7: A dotted quarter note with a flat, a dotted quarter note with a sharp, and a dotted quarter note.
- Staff 8: A dotted quarter note, a dotted quarter note, and a dotted quarter note with a sharp.
- Staff 9: A dotted quarter note, a dotted quarter note with a flat, and a dotted quarter note with a flat.
- Staff 10: A dotted quarter note, a dotted quarter note with a flat, and a dotted quarter note.



12

