

sonneries

piano

eva-maria houben

sonneries

piano

eva-maria houben

2004

for erik satie.

I

ohne pedal.

linke hand: tasten stumm drücken, stets legato.

rechte hand: tasten nachdrücklich und fest (etwa mf) anschlagen, aber nicht halten, sondern loslassen.

jedem klang nachhören, bis er fast verschwunden ist; in den verschwindenden klang den nächsten spielen.

√ : etwas zeit lassen zum atmen.

without pedal.

left hand: press down the keys – mutely. always legato.

right hand: strike the keys rather strongly (perhaps mf), but don't keep down them.

listen to each sound until it nearly has vanished; play the next sound simultaneously with the decaying sound.

√ : a short break to breath.

System 1: Treble clef (top) and Bass clef (bottom). Treble staff: quarter notes G4, A4, B4, C5. Bass staff: quarter notes G3, A3, B3, C4. Accents (checkmarks) are above the final notes in both staves.

System 2: Bass clef (top) and Treble clef (bottom). Bass staff: quarter notes G3, A3, B3, C4. Treble staff: quarter notes G4, A4, B4, C5. Accents (checkmarks) are above the final notes in both staves.

System 3: Treble clef (top) and Bass clef (bottom). Treble staff: quarter notes G4, A4, B4, C5. Bass staff: quarter notes G3, A3, B3, C4. Accents (checkmarks) are above the final notes in both staves.

System 4: Bass clef (top) and Treble clef (bottom). Bass staff: quarter notes G3, A3, B3, C4. Treble staff: quarter notes G4, A4, B4, C5. Accents (checkmarks) are above the final notes in both staves.

System 5: Treble clef (top) and Bass clef (bottom). Treble staff: quarter notes G4, A4, B4, C5. Bass staff: quarter notes G3, A3, B3, C4. Accents (checkmarks) are above the final notes in both staves.

System 6: Treble clef (top) and Bass clef (bottom). Treble staff: quarter notes G4, A4, B4, C5. Bass staff: quarter notes G3, A3, B3, C4. Accents (checkmarks) are above the final notes in both staves.

System 1: Treble clef (top) and Bass clef (bottom). Treble clef notes: G4, F4, E4, D4. Bass clef notes: G3, F3, E3, D3. Accents (checkmarks) are placed above the treble clef notes at the 2nd and 4th measures.

System 2: Treble clef (top) and Bass clef (bottom). Treble clef notes: G4, F4, E4, D4. Bass clef notes: G3, F3, E3, D3. Accents (checkmarks) are placed above the treble clef notes at the 2nd and 4th measures.

System 3: Treble clef (top) and Bass clef (bottom). Treble clef notes: G4, F4, E4, D4. Bass clef notes: G3, F3, E3, D3. An accent (checkmark) is placed above the treble clef note at the 4th measure.

System 4: Treble clef (top) and Bass clef (bottom). Treble clef notes: G4, F4, E4, D4. Bass clef notes: G3, F3, E3, D3. An accent (checkmark) is placed above the treble clef note at the 4th measure.

System 5: Treble clef (top) and Bass clef (bottom). Treble clef notes: G4, F4, E4, D4. Bass clef notes: G3, F3, E3, D3. Accents (checkmarks) are placed above the treble clef notes at the 2nd and 4th measures.

System 6: Treble clef (top) and Bass clef (bottom). Treble clef notes: G4, F4, E4, D4. Bass clef notes: G3, F3, E3, D3. An accent (checkmark) is placed above the treble clef note at the 4th measure.

II

einige blätter auswählen und in freier reihenfolge spielen.

ohne pedal.

linke und rechte hand teilen sich die register des klaviers (hoch und tief).

beide hände spielen gleichzeitig, setzen frei ein.

jedem klang nachhören, bis er verschwunden ist, und sogleich den nächsten anschließen.

stets legato.

choose some pages and play in free order.

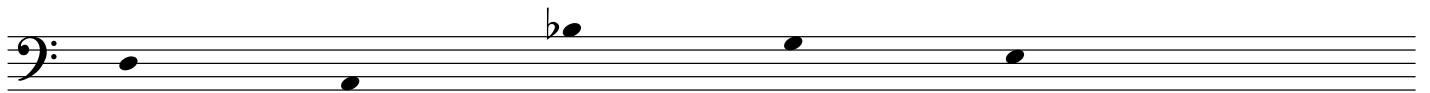
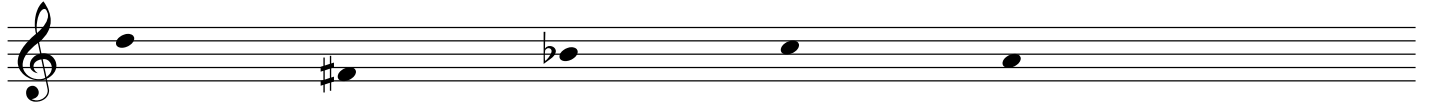
without pedal.

right and left hand play in the different registers of the piano.

both hands play simultaneously; they enter freely.

listen to each sound until its decay; then play the next one immediately.

legato throughout.



15^{ma}

A musical staff with a treble clef. It contains seven notes: G4, A4, B4, C5, D5, E5, and F5. A dashed line connects the G4 note to the F5 note. A bracket is positioned below the F5 note.

A musical staff with a bass clef. It contains two notes: G2 and F2.

