

# litanies

guitar, piano

eva-maria houben

© edition wandelweiser **2005**

catalogue number ew16.064

litanies

für gitarre und klavier

for guitar and piano

eva-maria houben

2005

für michael.

for michael.

jedem klang nachhören, bis er verschwunden ist.  
dann den nächsten anschließen.

atemzäsuren: eine zeitlang innehalten und verweilen.

alle klänge sind leise.

jeder spieler ist solist, spielt für sich.  
einer fängt irgendwann an zu spielen.  
der andere setzt so ein, dass die spuren der beiden sich eine ganze  
zeitlang überschneiden.

seiten auswählen und in freier reihenfolge spielen.

listen to each sound until the decay.

then play the next one.

short breaks to breath. stay for a while.

all sounds are soft.

each player plays as soloist: play for yourself.

one player begins to play anytime.

the other player enters in a way, that the lines of both players overlap for rather a long time.

choose some pages and play in free order.

gitarre

A musical staff in treble clef with a key signature of one sharp (F#). The notes are: F#4 (first space), G4 (second space), A4 (third space), and B4 (fourth space). A checkmark is placed above the B4 note.

A musical staff in treble clef with a key signature of one sharp (F#). The notes are: F#4 (first space), G4 (second space), A4 (third space), and B4 (fourth space). A checkmark is placed above the B4 note.

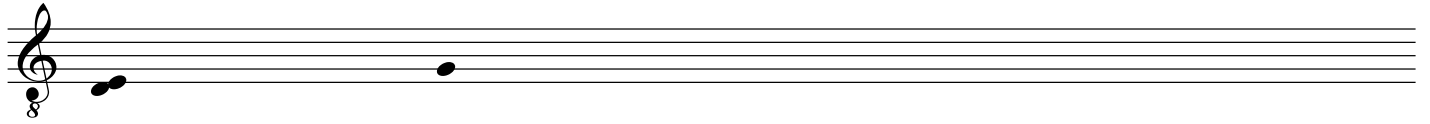
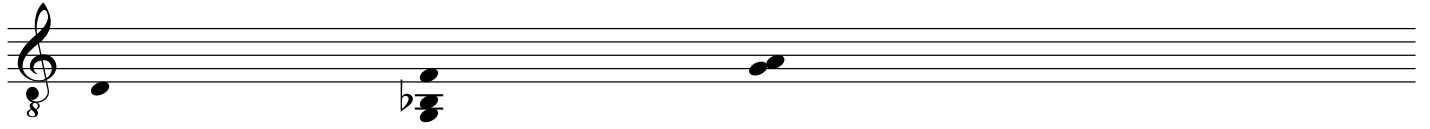
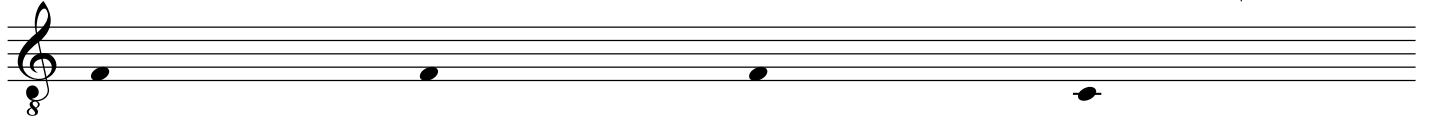
A musical staff in treble clef with a key signature of one sharp (F#). The notes are: F#4 (first space), G4 (second space), and A4 (third space).

klavier

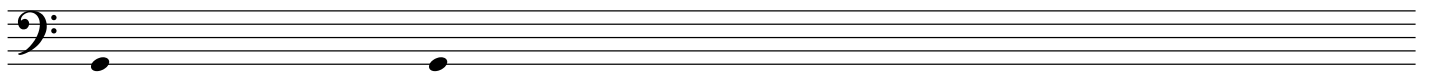
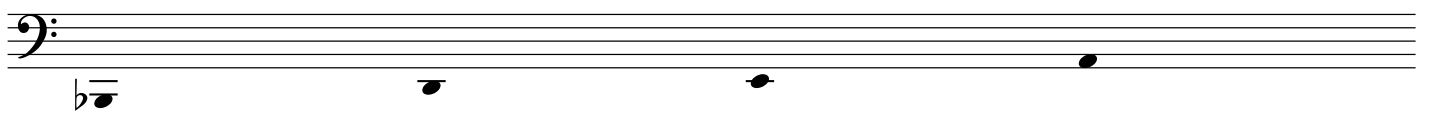
A musical staff in treble clef with a key signature of one sharp (F#). The notes are: F#4 (first space), G4 (second space), A4 (third space), and B4 (fourth space). A checkmark is placed above the B4 note.

A musical staff in treble clef with a key signature of one sharp (F#). The notes are: F#4 (first space), G4 (second space), and A4 (third space).

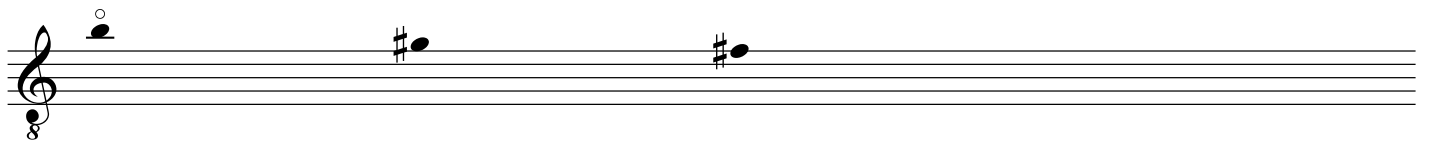
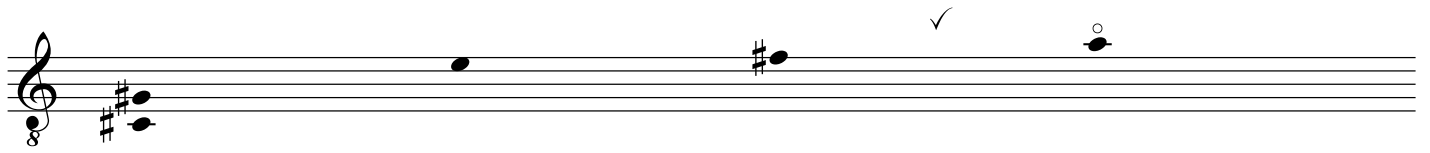
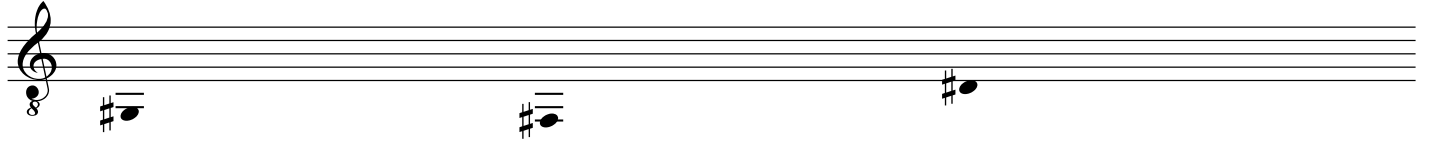
gitarre



klavier



gitarre



klavier



gitarre

A single staff of music in treble clef with a 3/8 time signature. It contains five notes: F#4, G4, A4, B4, and C5. A checkmark is positioned above the staff towards the right side.

A single staff of music in treble clef with a 3/8 time signature. It contains five notes: G4, A4, B4, C5, and D5. A checkmark is positioned above the staff towards the left side.

klavier

A single staff of music in treble clef with a 3/8 time signature. It contains three notes: G4, A4, and B4. A checkmark is positioned above the staff towards the right side.

A single staff of music in treble clef with a 3/8 time signature. It contains four notes: G4, A4, B4, and C5. A checkmark is positioned above the staff towards the left side.

A single staff of music in treble clef with a 3/8 time signature. It contains two notes: F#4 and G4. A bass clef is positioned above the staff towards the right side.



gitarre

A musical staff in treble clef with a key signature of one flat (B-flat). The time signature is 8/8. The staff contains four quarter notes: B-flat (first line), D (second line), F (third line), and A (third space). A checkmark is placed above the staff between the first and second notes. A double bar line is located below the first note.

A musical staff in treble clef with a key signature of one flat (B-flat). The time signature is 8/8. The staff contains four quarter notes: B-flat (first line), D (second line), F (third line), and A (third space). A checkmark is placed above the staff between the first and second notes. A double bar line is located below the second note.

klavier

A musical staff in treble clef with a key signature of one flat (B-flat). The time signature is 8/8. The staff contains four quarter notes: B-flat (first line), D (second line), F (third line), and A (third space). A checkmark is placed above the staff between the third and fourth notes. A double bar line is located below the fourth note.

A musical staff in bass clef with a key signature of one flat (B-flat). The time signature is 8/8. The staff contains four quarter notes: B-flat (first space), D (second space), F (third space), and A (third space). A checkmark is placed above the staff between the third and fourth notes. A double bar line is located below the fourth note.

A musical staff in bass clef with a key signature of one flat (B-flat). The time signature is 8/8. The staff contains four quarter notes: B-flat (first space), D (second space), F (third space), and A (third space). A double bar line is located below the first note.

gitarre

A musical staff in treble clef with a key signature of one flat (B-flat). It contains four quarter notes: B-flat (first space), D (second space), F (third space), and G (third space). A checkmark is placed above the F note. An '8' is written below the first two notes.

A musical staff in treble clef with a key signature of one flat (B-flat). It contains four quarter notes: B-flat (first space), D (second space), F (third space), and G (third space). An '8' is written below the first two notes.

klavier

A musical staff in bass clef with a key signature of one flat (B-flat). It contains four quarter notes: B-flat (first space), D (second space), F (third space), and G (third space). Checkmarks are placed above the D and G notes. An '8' is written below the first two notes.

A musical staff in bass clef with a key signature of one flat (B-flat). It contains four quarter notes: B-flat (first space), D (second space), F (third space), and G (third space).

gitarre

A musical staff in treble clef with a 3/8 time signature. It contains three notes: a sharp G4 (marked with a checkmark), an A4, and a B4.

A musical staff in treble clef with a 3/8 time signature. It contains two notes: a sharp G4 and a sharp A4.

klavier

A musical staff in treble clef with a 3/8 time signature. It contains four notes: a sharp G4 (marked with a checkmark), an A4, a sharp B4, and a sharp C5.

A musical staff in treble clef with a 3/8 time signature. It contains three notes: a sharp G4 (marked with a checkmark), an A4, and a sharp B4. A bass clef is positioned below the staff, with a sharp G4 note written below it.

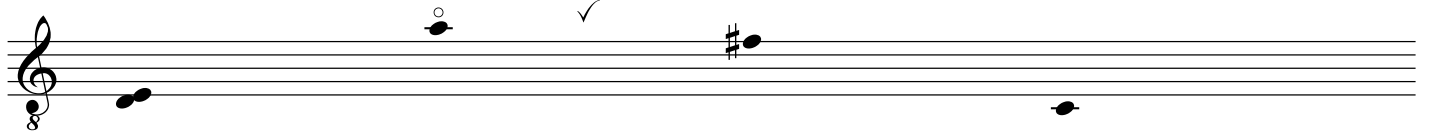
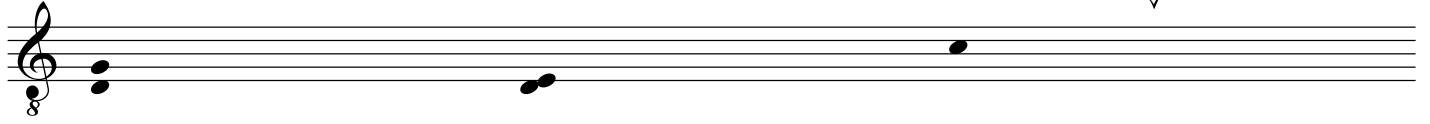
gitarre



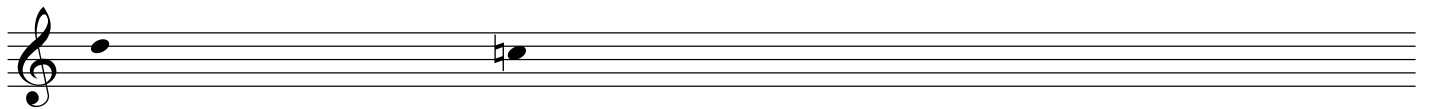
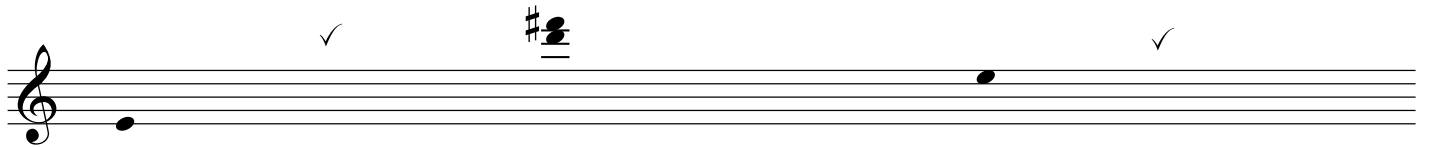
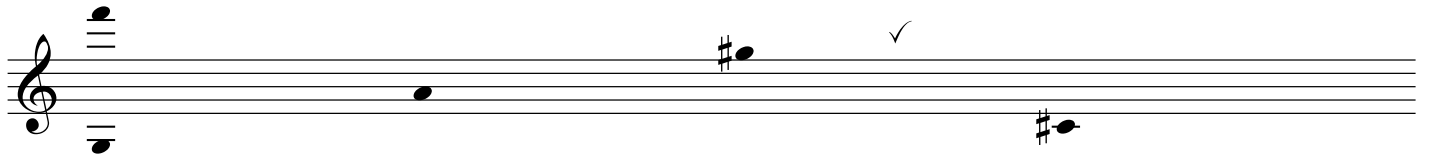
klavier



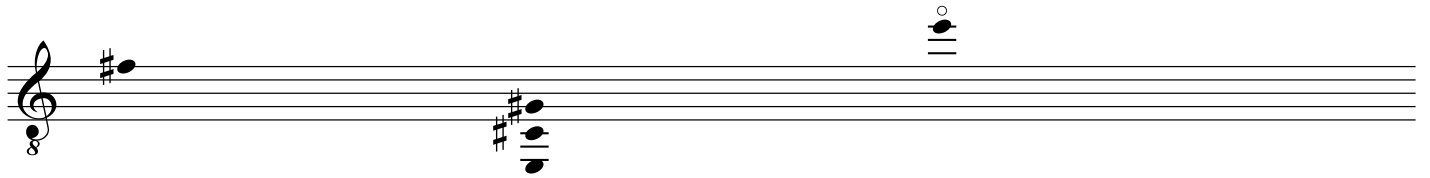
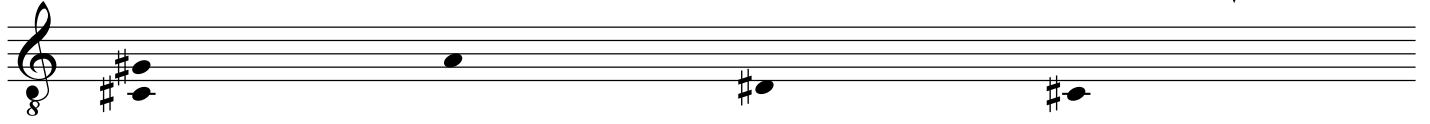
38 gitarre



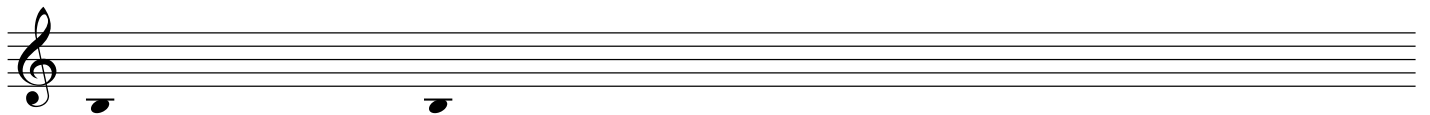
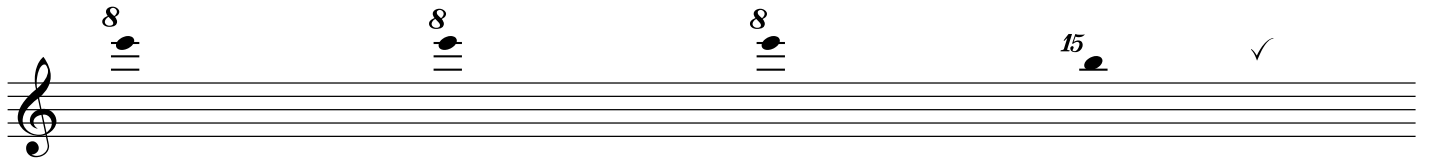
klavier



gitarre



klavier



gitarre

A musical staff in treble clef with a 3/8 time signature. It contains a quarter note on G4, a quarter note on A4 with a circled notehead, a checkmark, and a quarter note on B4 with a circled notehead. There are two horizontal lines below the staff, one under the G4 note and one under the B4 note.

A musical staff in treble clef. It contains a quarter note on G4 with a circled notehead, a checkmark, a quarter note on A4, and a quarter note on B4.

klavier

A musical staff in treble clef. It contains a quarter note on G4, a quarter note on A4 with a circled notehead, a checkmark, a quarter note on B4, and a quarter note on C5.

A musical staff in treble clef. It contains a quarter note on G4, a bass clef symbol, and a quarter note on B4 with a circled notehead. There are two horizontal lines below the staff, one under the G4 note and one under the B4 note.

gitarre

8

klavier

8



gitarre



klavier

gitarre

A musical staff for guitar in treble clef, 8/8 time. It contains five notes: a quarter note on G4, a dotted quarter note on A4 with a circled 'o' above it, a quarter note on B4 with a sharp sign (#) to its left, a quarter note on C5, and a dotted quarter note on D5 with a sharp sign (#) to its left. There are two checkmarks: one above the A4 note and one above the D5 note. A double bar line is at the end of the staff.

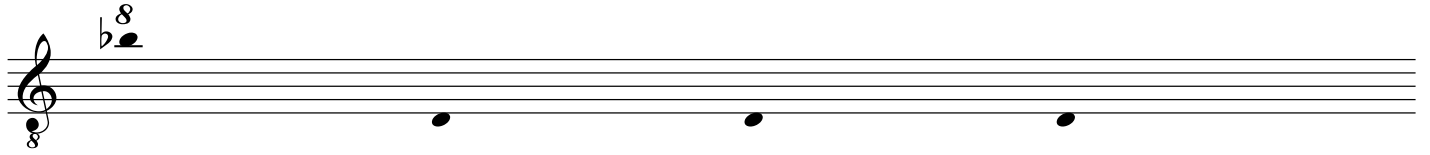
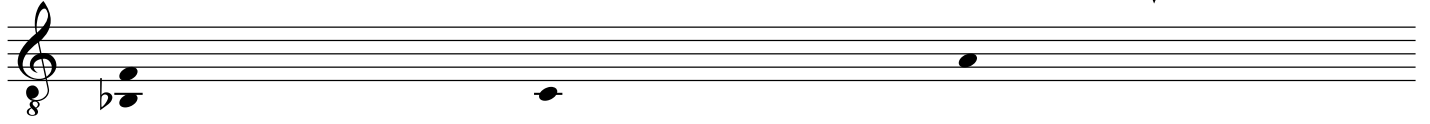
A musical staff for guitar in treble clef, 8/8 time. It contains five quarter notes: G4, A4, B4, C5, and D5. A checkmark is above the A4 note. A double bar line is at the end of the staff.

klavier

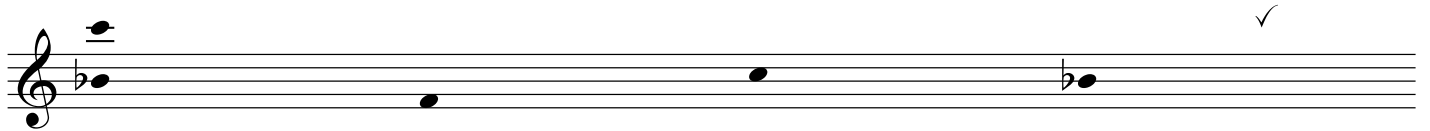
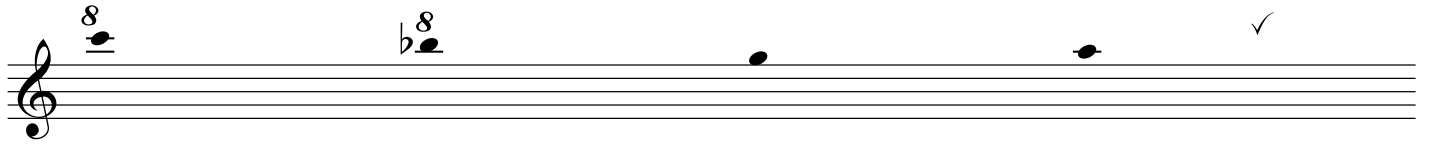
A musical staff for piano in bass clef, 8/8 time. It contains five notes: a quarter note on G3, a dotted quarter note on A3, a quarter note on B3, a quarter note on C4, and a dotted quarter note on D4. The D4 note is written in a treble clef. There is a checkmark above the D4 note. A double bar line is at the end of the staff.

A musical staff for piano in treble clef, 8/8 time. It contains five notes: a quarter note on G4 with an '8' above it, a dotted quarter note on A4 with an '8' above it, a quarter note on B4, a quarter note on C5, and a dotted quarter note on D5. A double bar line is at the end of the staff.

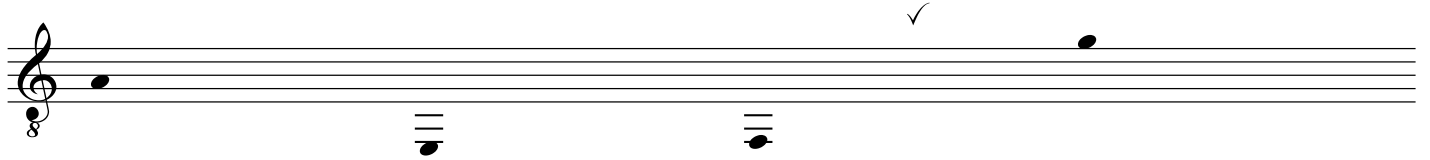
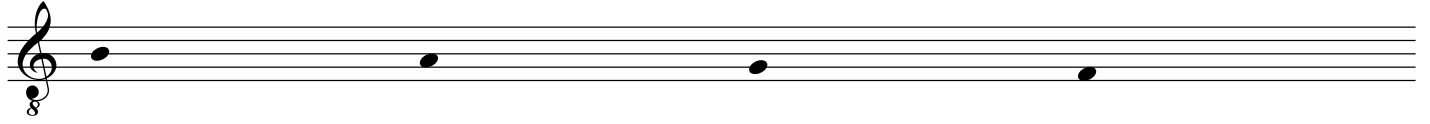
gitarre



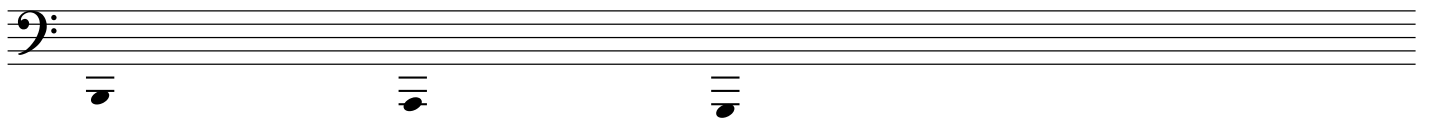
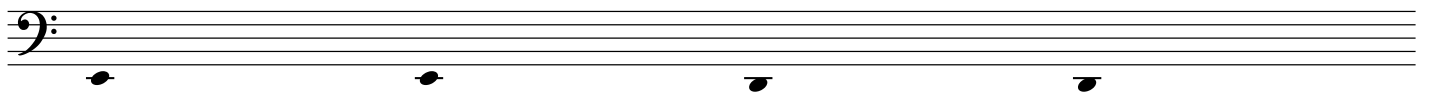
klavier



gitarre



klavier



gitarre

A musical staff in treble clef with a 3/8 time signature. It contains four notes: a quarter note with a sharp sign and two vertical lines below it, a quarter note with a sharp sign and two vertical lines below it, a quarter note with a sharp sign and one vertical line below it, and a quarter note with a sharp sign and one vertical line below it. A checkmark is placed above the final note.

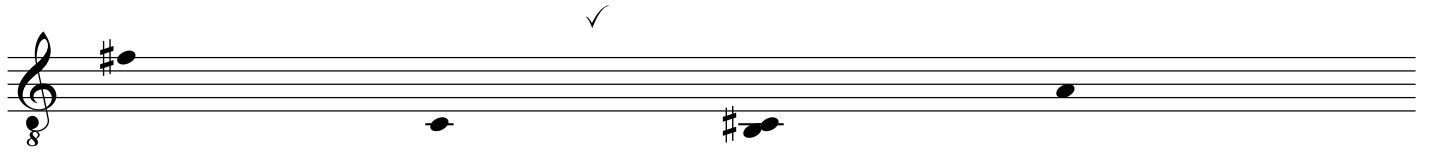
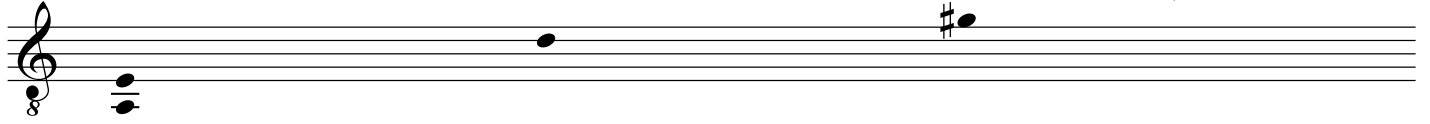
A musical staff in treble clef with a 3/8 time signature. It contains four notes: a quarter note with two vertical lines below it, a quarter note with a sharp sign and two vertical lines below it, a quarter note with two vertical lines below it, and a quarter note with two vertical lines below it.

klavier

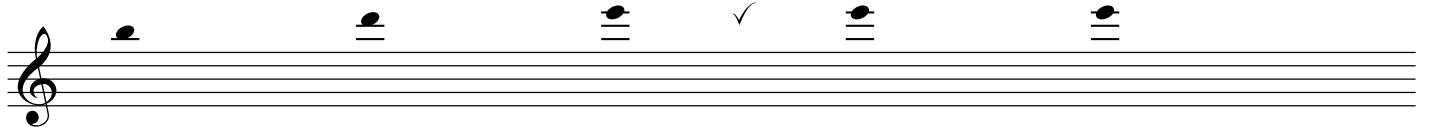
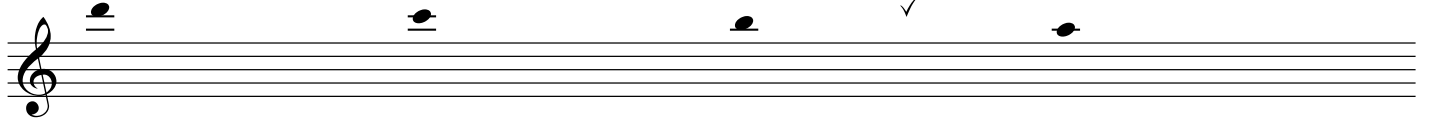
A musical staff in treble clef with a 3/8 time signature. It contains four notes, each with a sharp sign and two vertical lines below it: a quarter note, a quarter note, a quarter note, and a quarter note. A checkmark is placed above the final note.

A musical staff in treble clef with a 3/8 time signature. It contains two notes, each with a sharp sign and two vertical lines below it: a quarter note and a quarter note.

gitarre



klavier



gitarre

First staff of music (guitar) in treble clef. It contains three notes: a quarter note with a sharp sign (F#) on the first line, a quarter note with a sharp sign (C#) on the second line, and a quarter note with a sharp sign (G#) on the second space. A checkmark is placed above the staff to the right of the third note.

Second staff of music (guitar) in treble clef. It contains four notes: a quarter note with a sharp sign (F#) on the first line, a quarter note on the second line, a quarter note with a sharp sign (C#) on the second space, and a quarter note with a sharp sign (G#) on the second space. A checkmark is placed above the staff to the right of the fourth note.

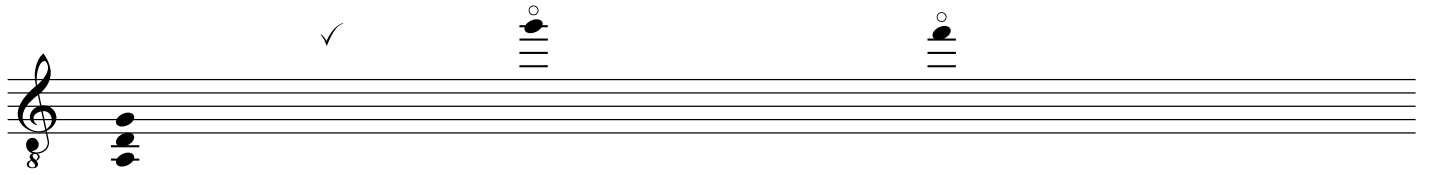
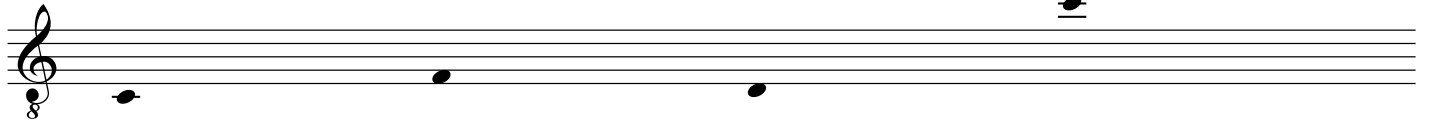
Third staff of music (guitar) in treble clef. It contains three notes: a quarter note on the first line, a quarter note on the second line, and a quarter note on the second space.

klavier

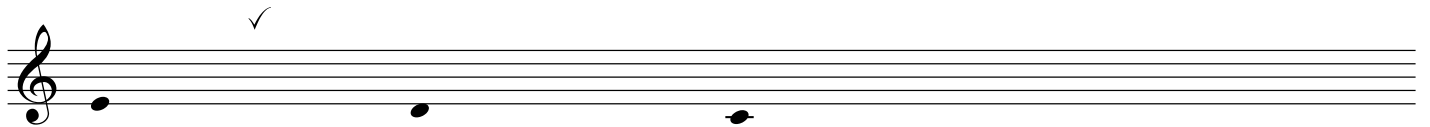
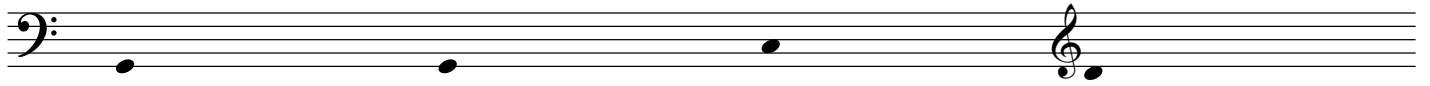
Fourth staff of music (piano) in treble clef. It contains three notes: a quarter note with a sharp sign (F#) on the first line, a quarter note with a sharp sign (C#) on the second line, and a quarter note with a sharp sign (G#) on the second space. A checkmark is placed above the staff to the right of the third note.

Fifth staff of music (piano) in bass clef. It contains two notes: a quarter note with a sharp sign (F#) on the first line and a quarter note with a sharp sign (C#) on the second line.

gitarre

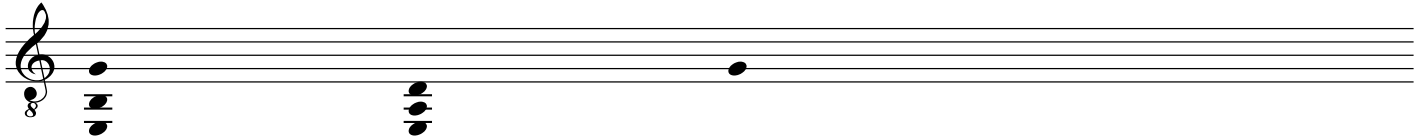
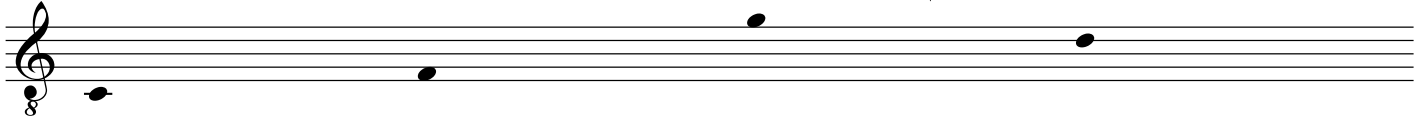


klavier

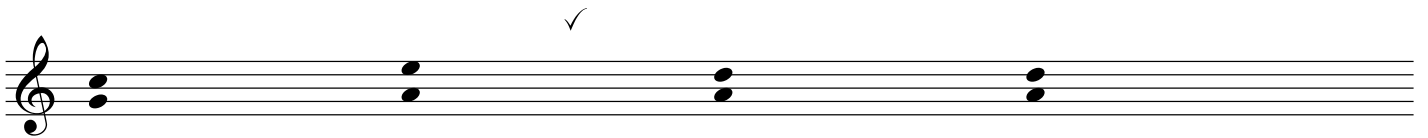
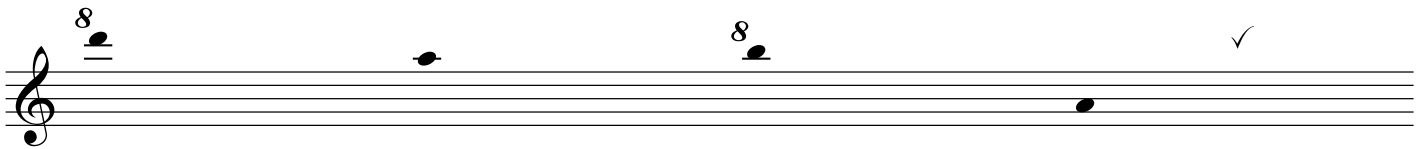




gitarre



klavier



gitarre

A musical staff in treble clef with a common time signature (C). It contains a double bar line at the beginning, followed by a dotted quarter note on G4, a quarter rest, a dotted quarter note on B4, a quarter rest, and a dotted quarter note on D5. A checkmark is placed above the staff between the second and third measures.

A musical staff in treble clef with a key signature of one flat (Bb). It contains a double bar line at the beginning, followed by a dotted quarter note on Bb4, a quarter rest, a dotted quarter note on D5, a quarter rest, and a dotted quarter note on F5. A checkmark is placed above the staff between the first and second measures.

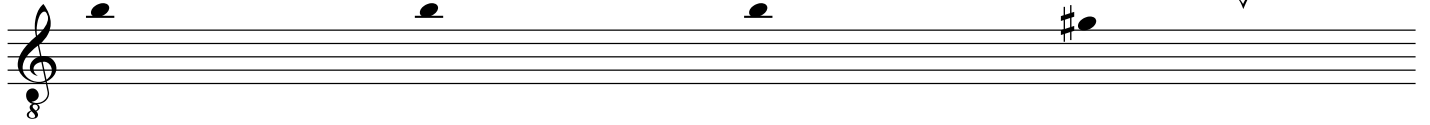
klavier

A musical staff in bass clef with a common time signature (C). It contains a double bar line at the beginning, followed by a dotted quarter note on G2, a quarter rest, a dotted quarter note on B2, a quarter rest, and a dotted quarter note on D3. A checkmark is placed above the staff between the third and fourth measures.

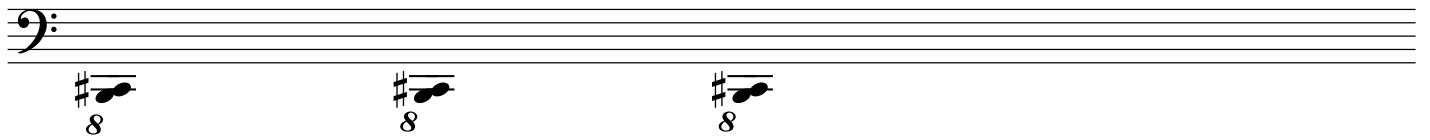
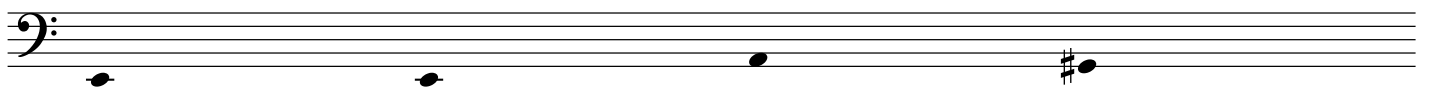
A musical staff in treble clef with a common time signature (C). It contains a double bar line at the beginning, followed by a dotted quarter note on G4, a quarter rest, a dotted quarter note on B4, a quarter rest, and a dotted quarter note on D5. A checkmark is placed above the staff between the third and fourth measures.

A musical staff in treble clef with a common time signature (C). It contains a double bar line at the beginning, followed by a dotted quarter note on G4, a quarter rest, a dotted quarter note on B4, a quarter rest, and a dotted quarter note on D5. A sharp sign (#) is placed above the staff between the third and fourth measures.

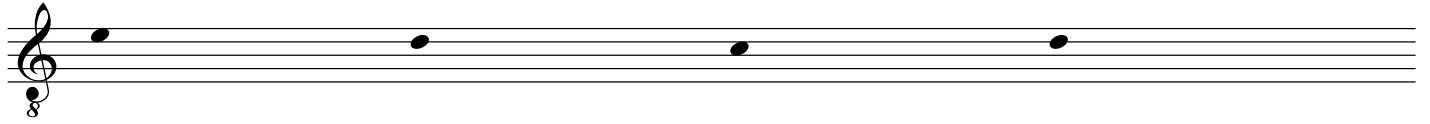
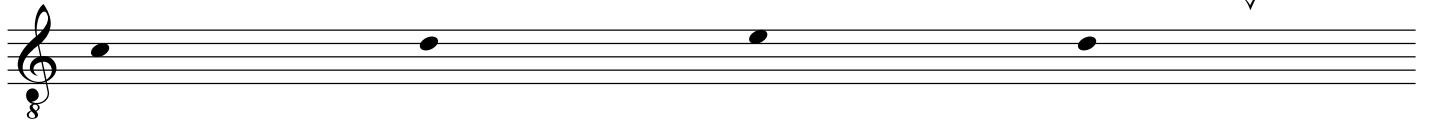
gitarre



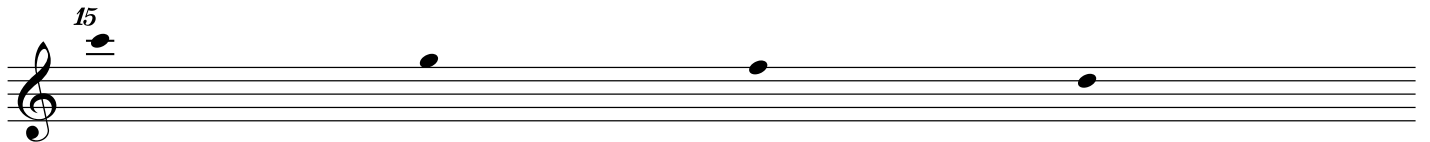
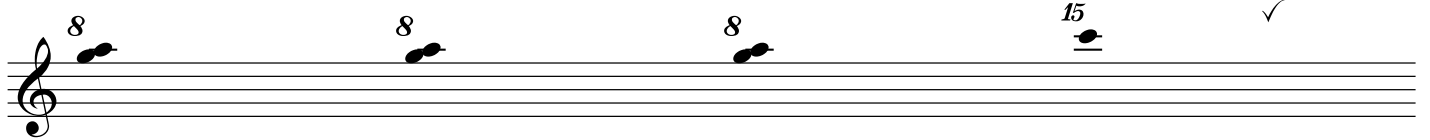
klavier



gitarre



klavier



gitarre

A musical staff for guitar. It features three chord diagrams at the beginning: a D major chord (two lines), a D major chord with a sharp (two lines), and a D major chord with a flat (two lines). A single sharp note is placed on the staff towards the right, with a checkmark above it.

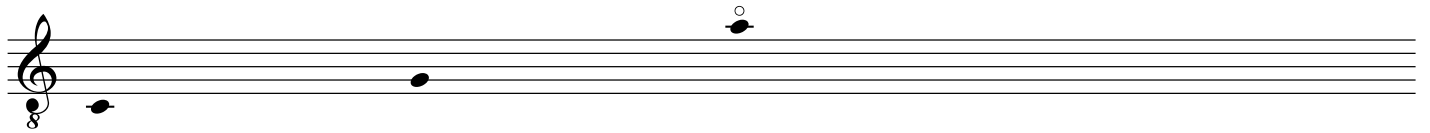
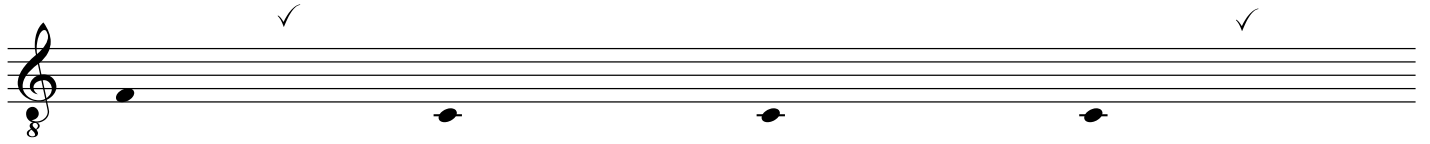
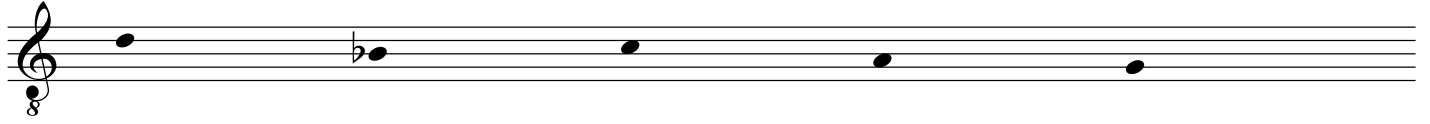
An empty musical staff with three sharp notes placed on it.

klavier

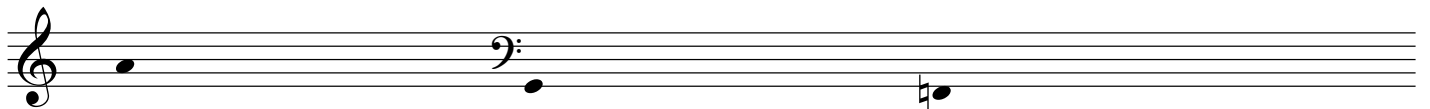
A musical staff for piano. It features three chord diagrams at the beginning: a D major chord (two lines), a D major chord with a sharp (two lines), and a D major chord with a flat (two lines). Four notes are placed on the staff: a sharp note, a sharp note, a flat note, and a flat note. A checkmark is located above the staff towards the right.

An empty musical staff with three notes placed on it.

gitarre



klavier



gitarre

A musical staff in treble clef with a key signature of one flat (B-flat). The staff contains a B-flat note on the first line, a whole note chord diagram above the staff, a B-flat note on the second line, and another whole note chord diagram above the staff. A checkmark is placed above the staff between the two chord diagrams. The number '8' is written below the first line.

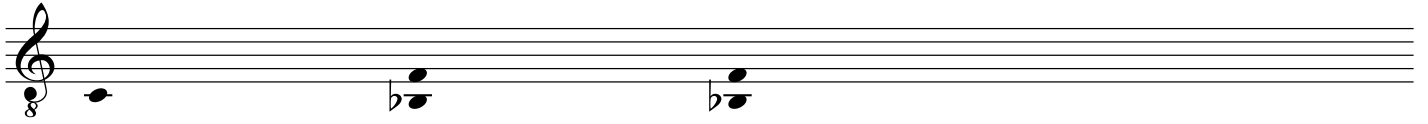
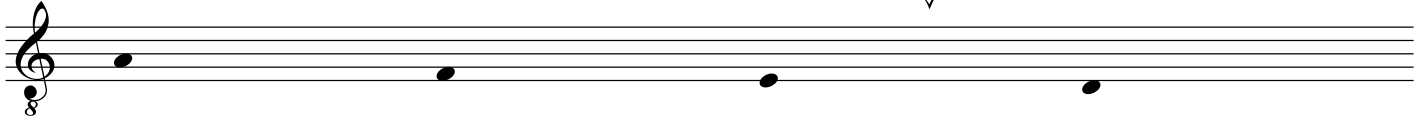
An empty musical staff in treble clef.

klavier

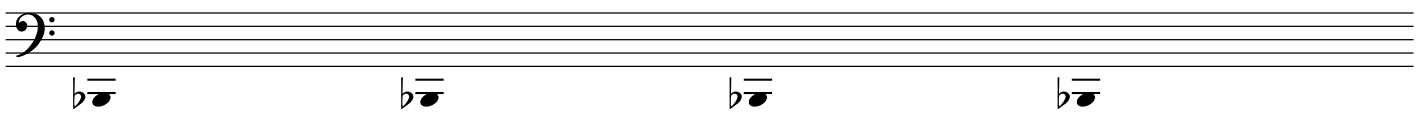
A musical staff in bass clef. The staff contains a B-flat note on the first line, a whole note chord diagram above the staff, a B-flat note on the second line, and a quarter note chord diagram above the staff. A checkmark is placed above the staff to the right of the quarter note chord diagram.

A musical staff in treble clef. The staff contains two whole note chord diagrams above the staff, each with the number '8' written above it.

gitarre

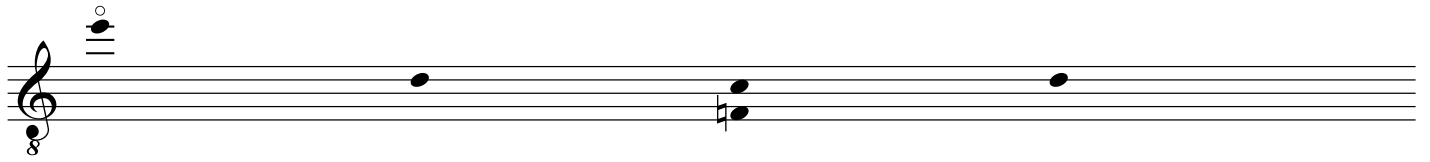
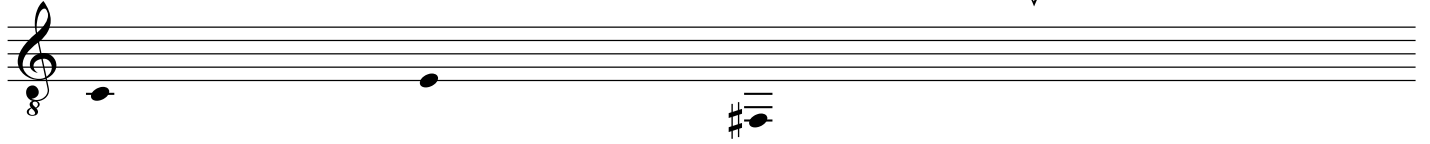


klavier

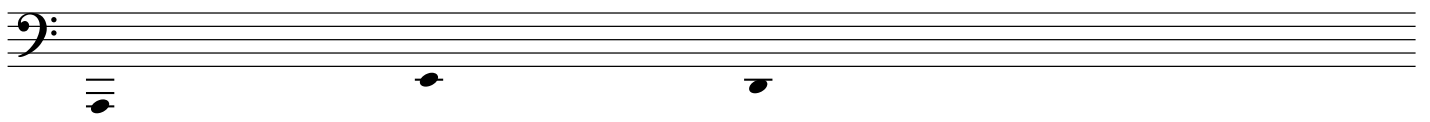




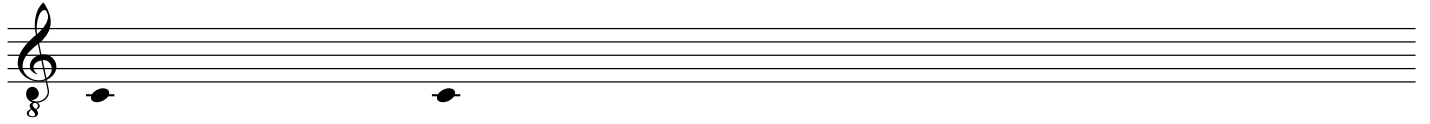
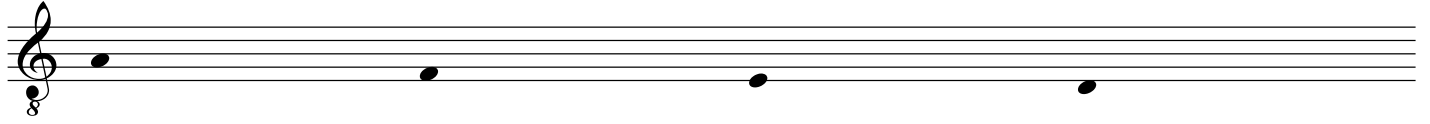
gitarre



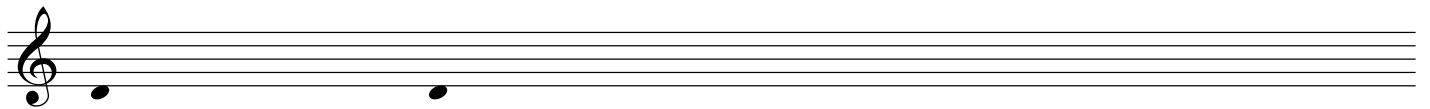
klavier



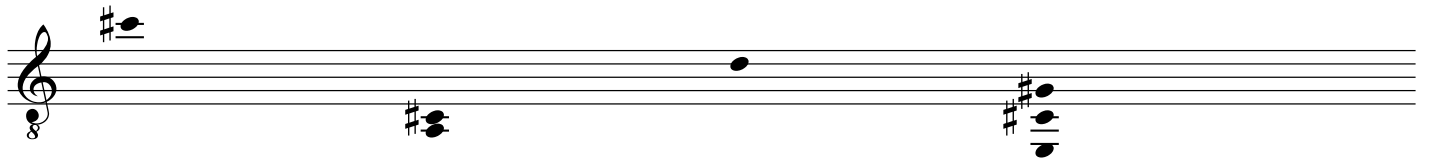
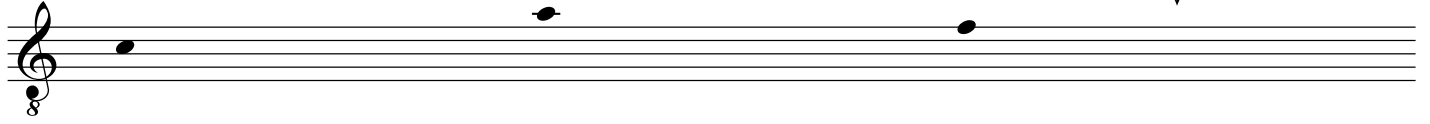
gitarre



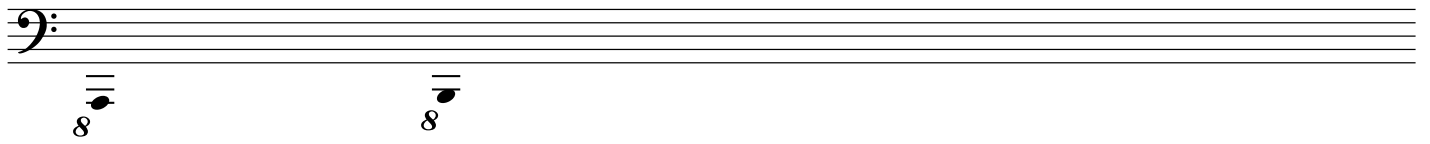
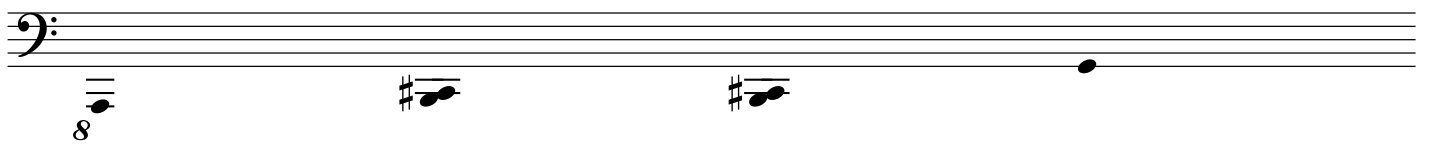
klavier



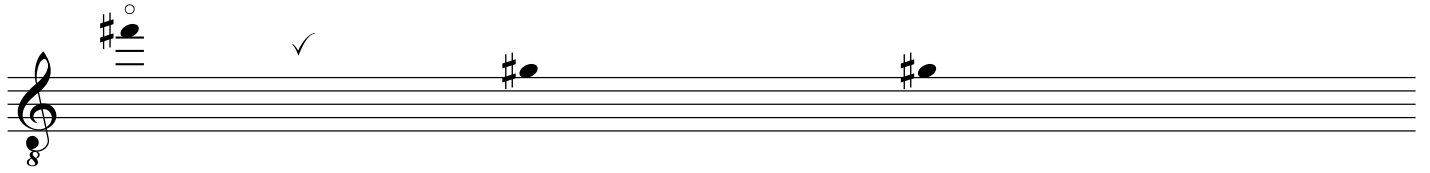
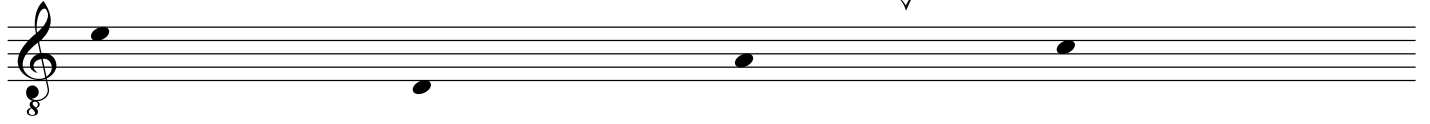
gitarre



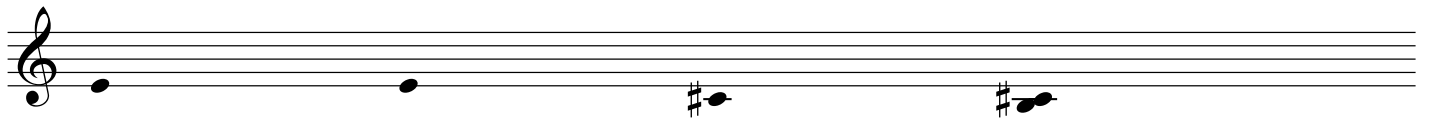
klavier



gitarre



klavier



gitarre

A single staff of music in treble clef. It begins with a treble clef, a key signature of one sharp (F#), and a common time signature (C). The first measure contains a chord of F#4, G#4, and A4. The second measure contains a single note G#4 with a circled 'o' above it. The third measure contains a single note B4 with a checkmark above it. The fourth measure contains a chord of F#4, G#4, and A4.

A single staff of music in treble clef. It begins with a treble clef, a key signature of one sharp (F#), and a common time signature (C). The first measure contains a single note F#4. The second measure contains a single note G#4 with a checkmark above it. The third measure contains a single note B4. The fourth measure contains a single note D5.

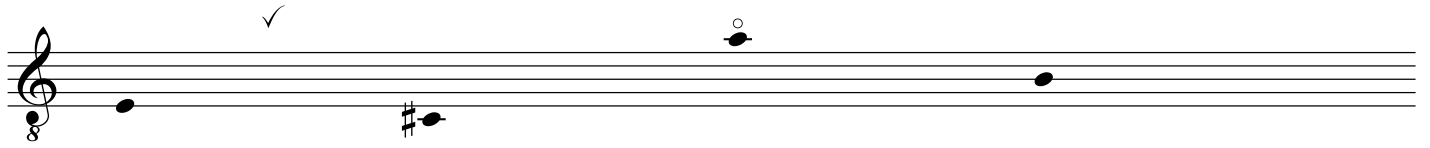
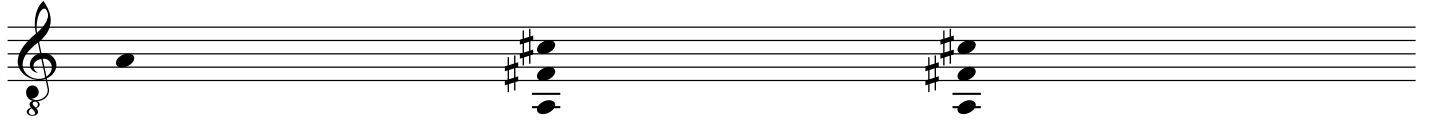
klavier

A single staff of music in treble clef. It begins with a treble clef, a key signature of one sharp (F#), and a common time signature (C). The first measure contains a chord of F#4 and G#4, with an '8' above the notes. The second measure contains a chord of G#4 and A4, with an '8' above the notes. The third measure contains a single note B4, with an '8' above it. The fourth measure contains a chord of F#4 and G#4, with an '8' above the notes. The fifth measure contains a single note D5.

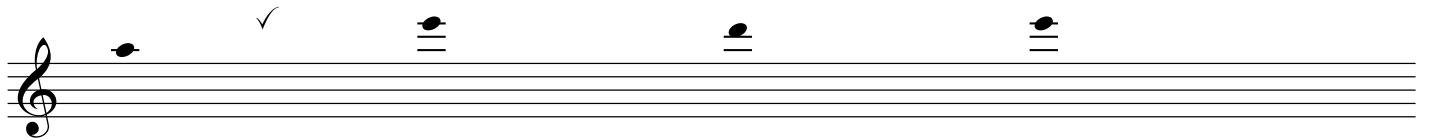
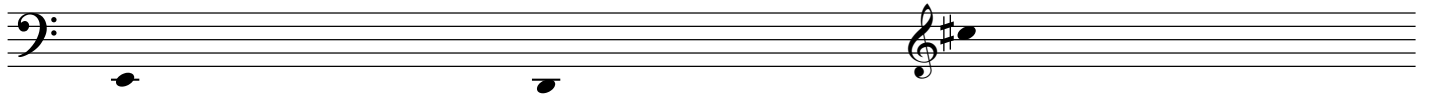
A single staff of music in treble clef. It begins with a treble clef, a key signature of one sharp (F#), and a common time signature (C). The first measure contains a single note F#4. The second measure contains a single note G#4. The third measure contains a bass clef and a single note B4. The fourth measure contains a single note D5 with a checkmark above it. The fifth measure contains a single note F#4.

A single staff of music in bass clef. It begins with a bass clef, a key signature of one sharp (F#), and a common time signature (C). The first measure contains a single note F#3. The second measure contains a single note G#3.

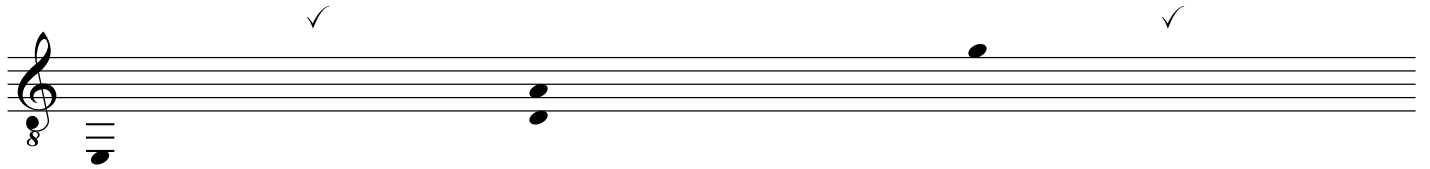
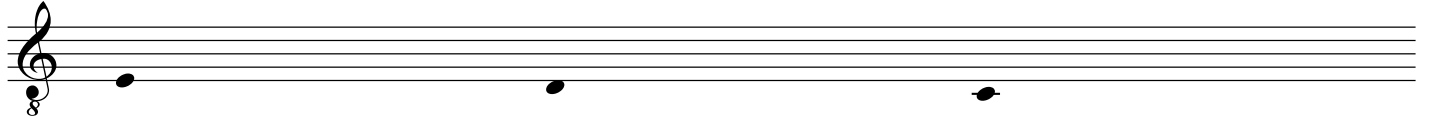
gitarre



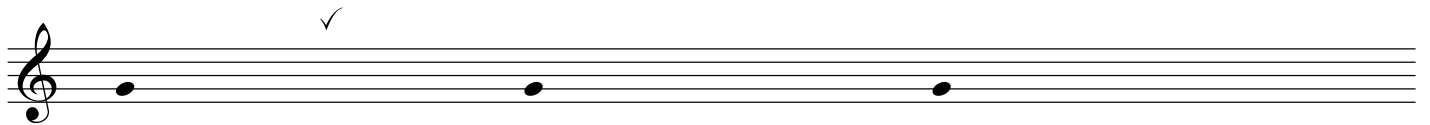
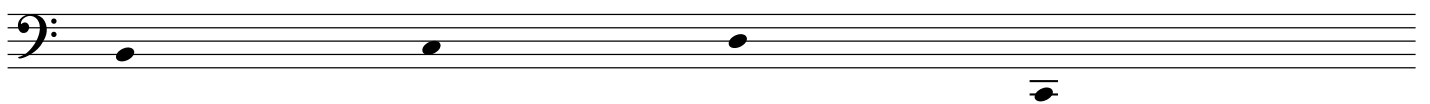
klavier



gitarre



klavier



gitarre

8

8

8

klavier

8

8