

some tunes
vol. II
for one performer

eva-maria houben
2006

some tunes

vol. II

for one performer

eva-maria houben

2006

ein tune pro seite.

alle klänge sind leise.

ein ruhiges allabreve-tempo. etwa $\text{♩} = 50-60 \text{ MM.}$

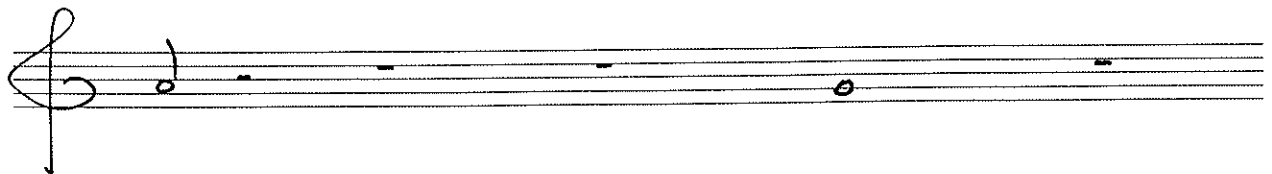
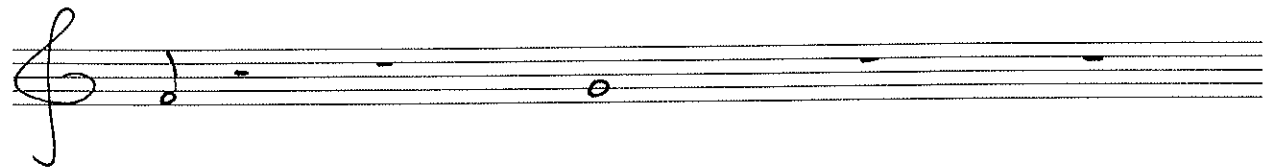
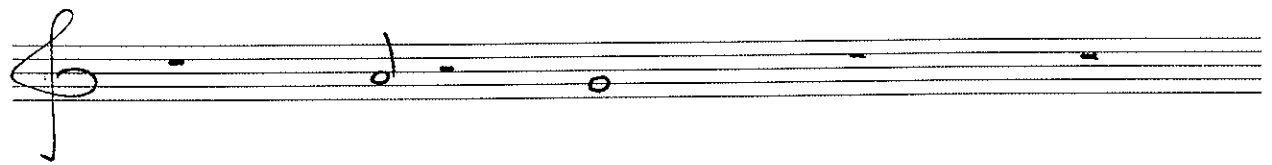
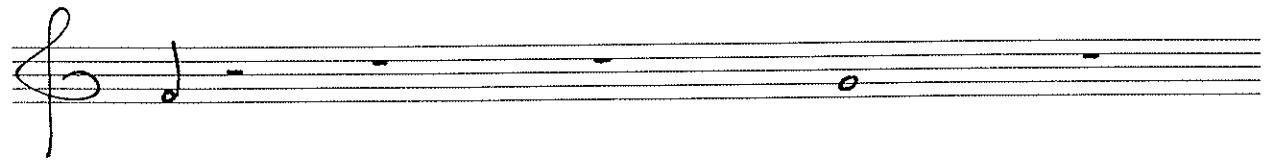
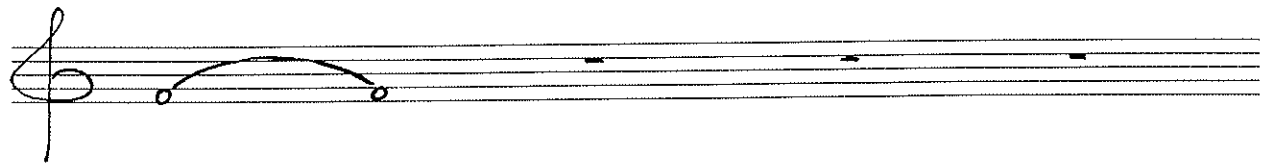
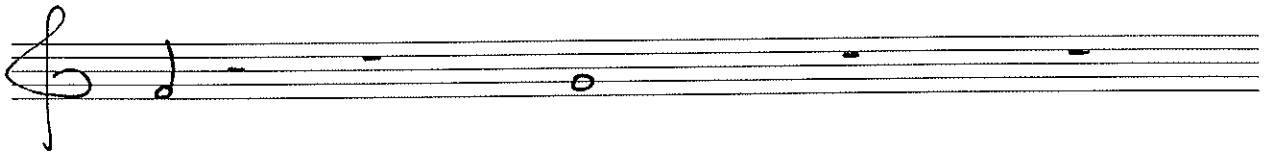
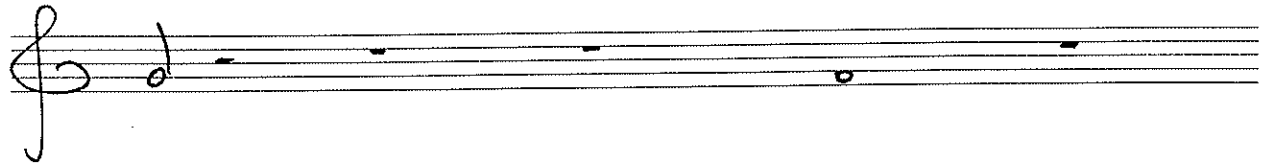
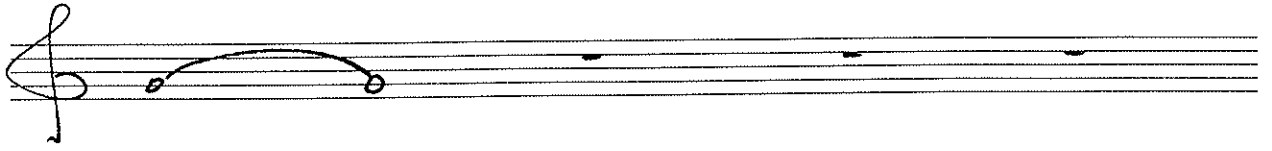
der ausführende legt pro tune die oktavlage fest.

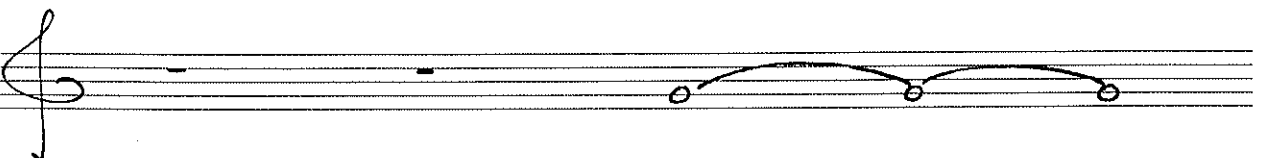
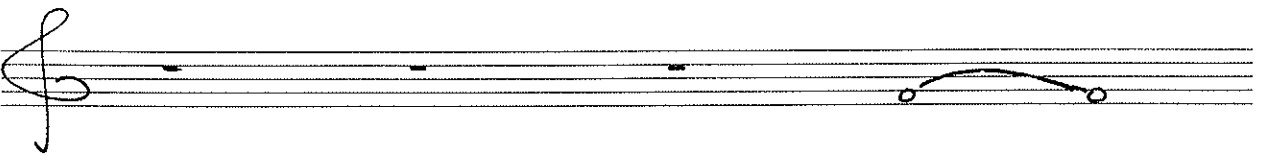
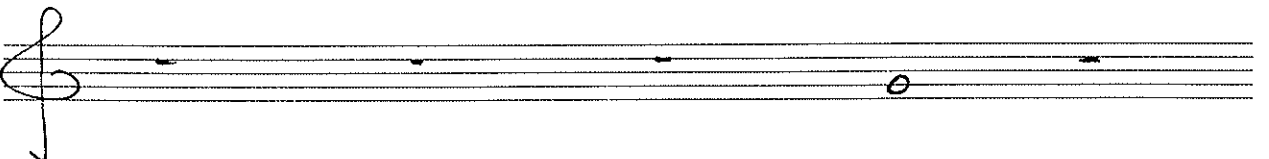
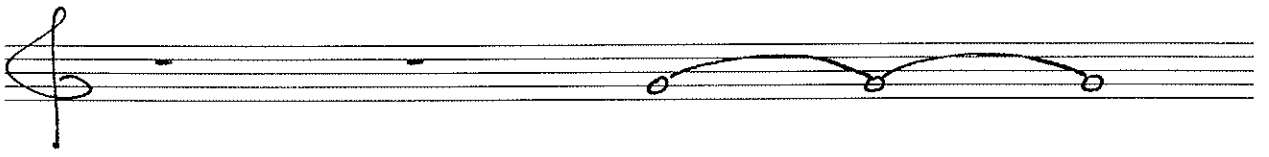
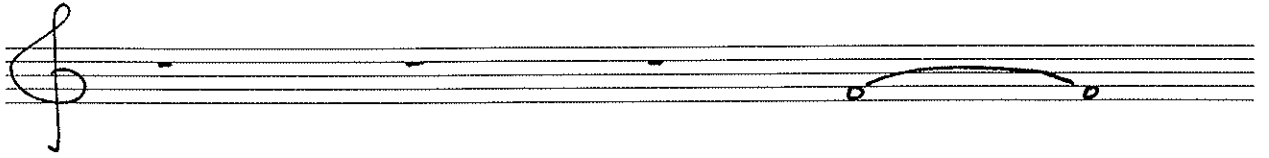
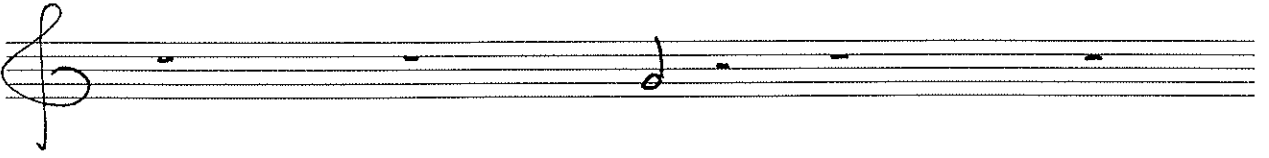
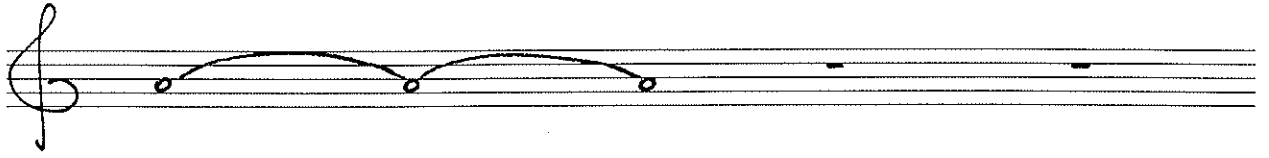
one tune per page.

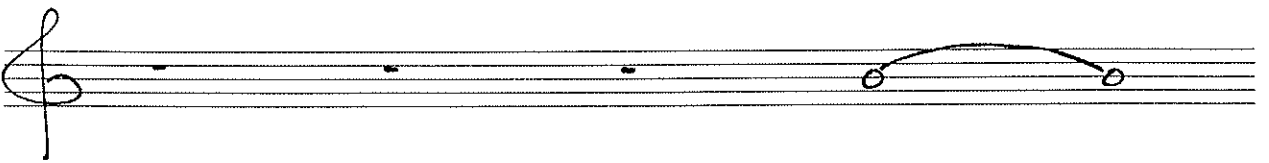
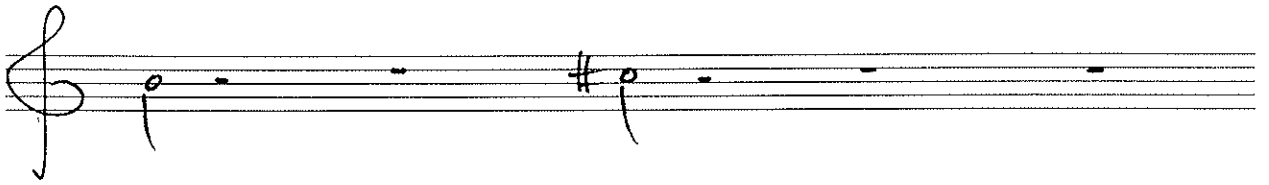
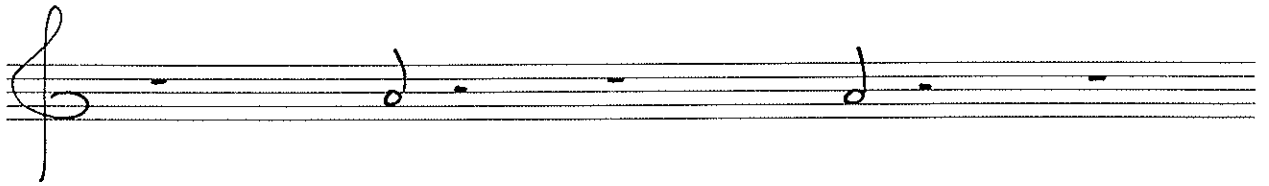
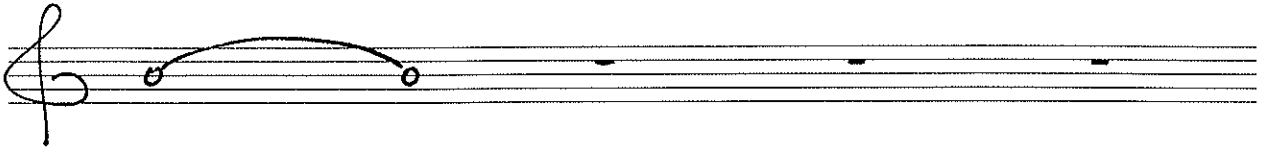
all sounds are soft.

a quiet, calm "alla breve"-tempo. about $\text{♩} = 50-60 \text{ MM.}$

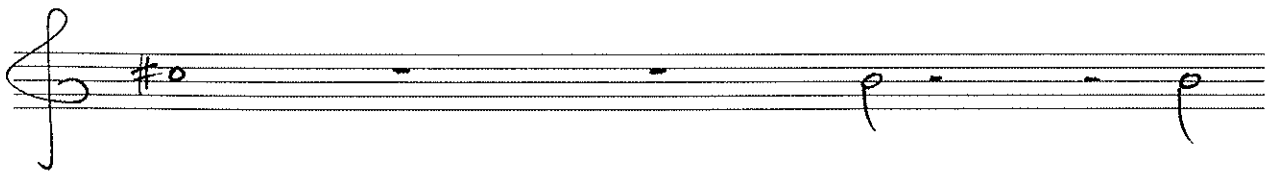
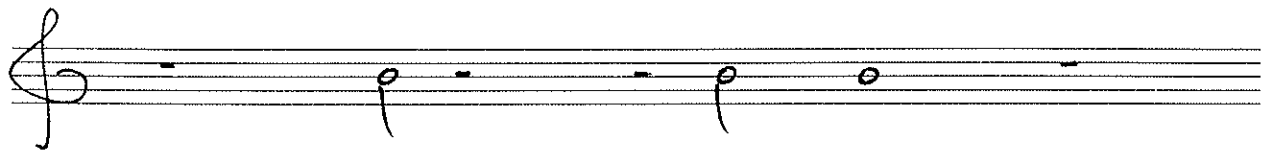
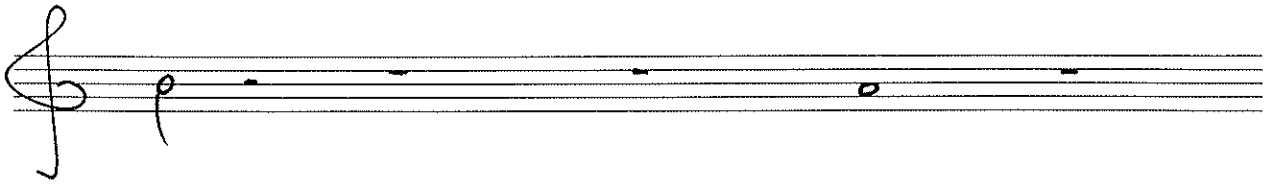
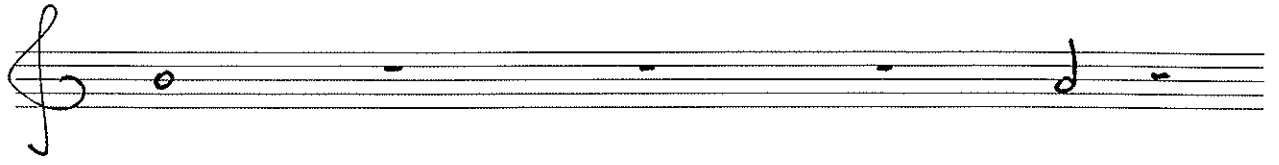
the performer chooses the register per tune.

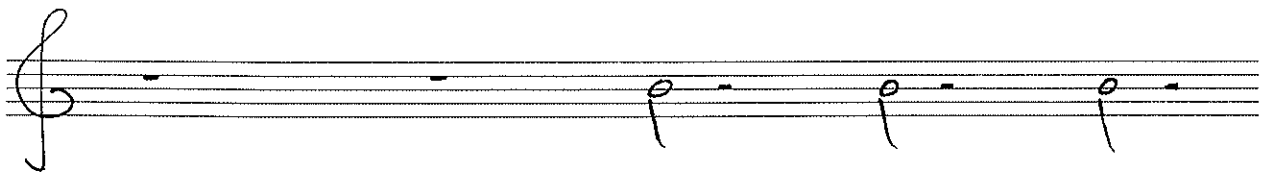
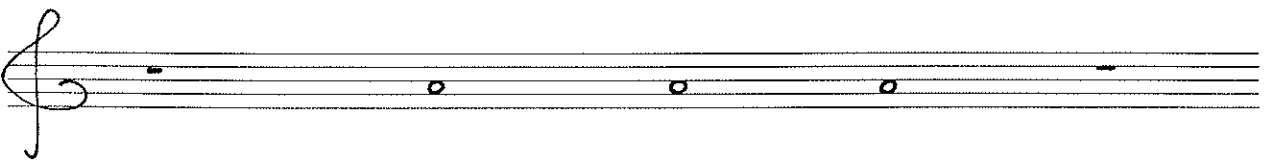
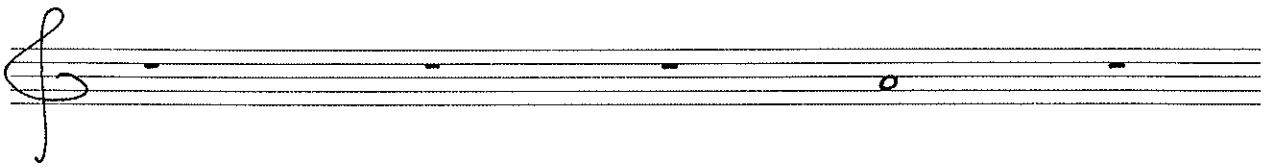


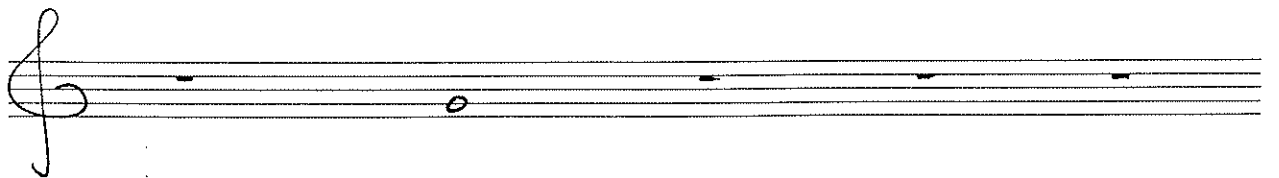
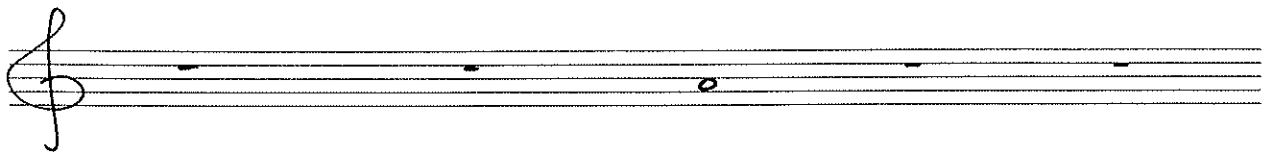
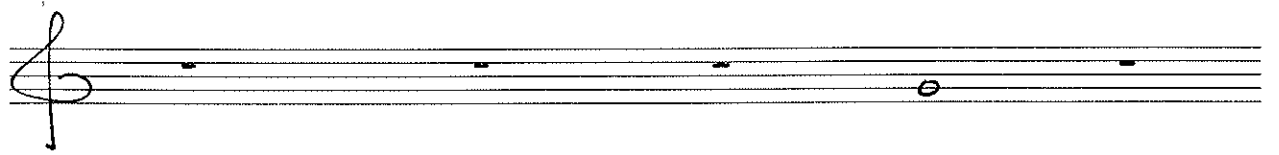
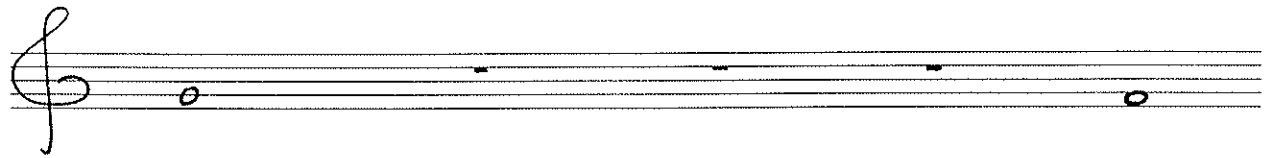
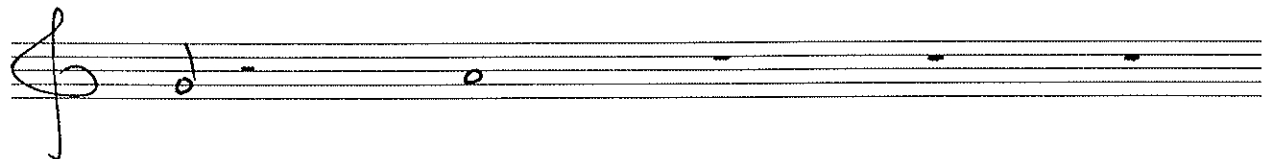
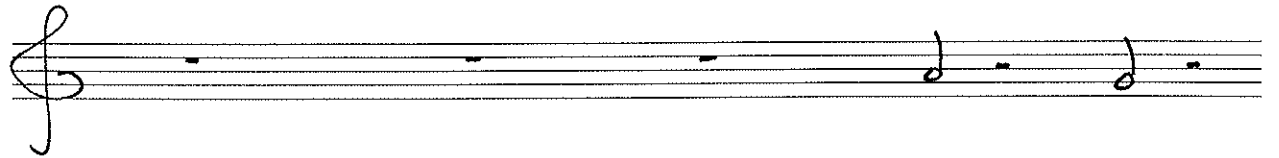
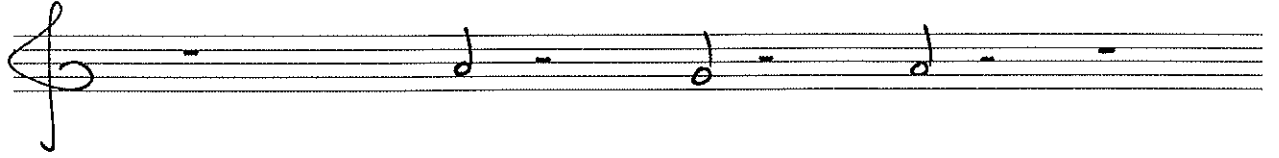




A handwritten musical score consisting of 15 staves. Each staff begins with a treble clef. The notation is sparse, featuring various note values and rests. The notes are primarily quarter and eighth notes, with some half notes. The rests are mostly whole and half rests. The handwriting is clear and consistent throughout the piece.



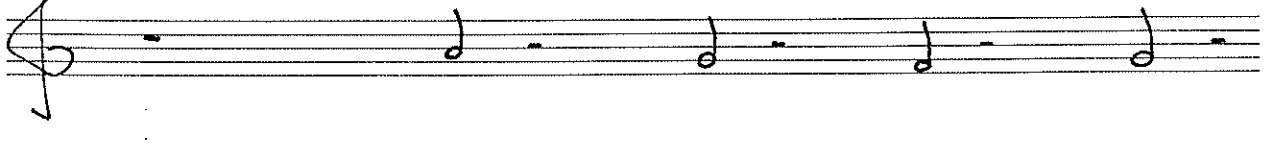
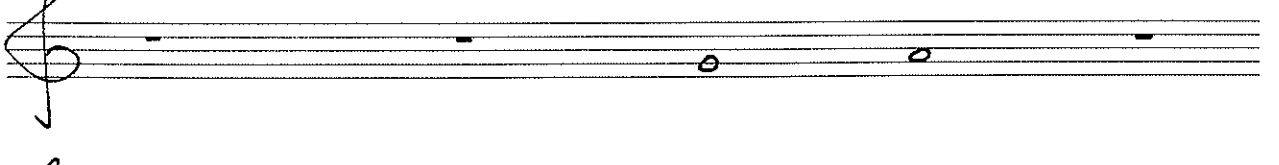
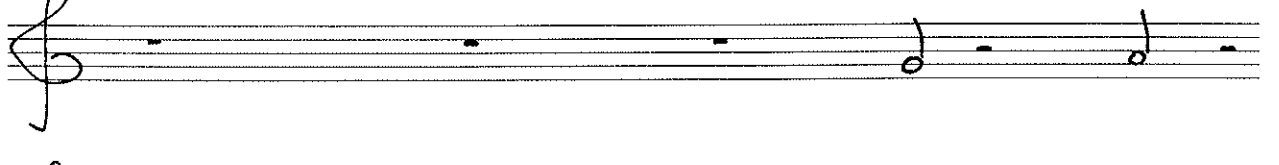
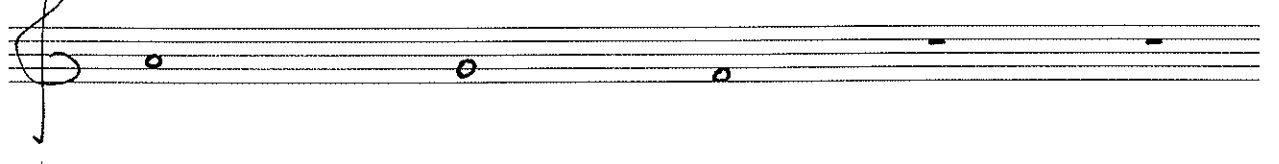
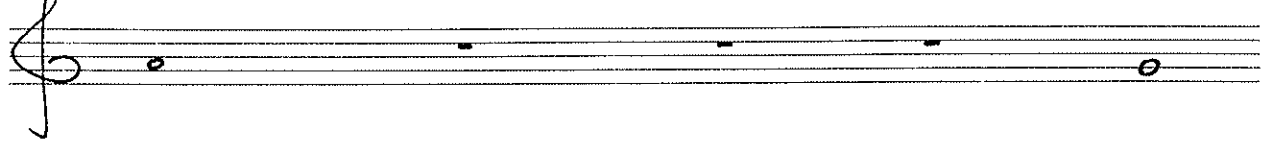
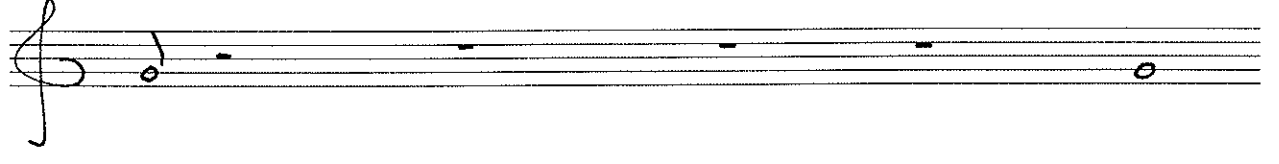
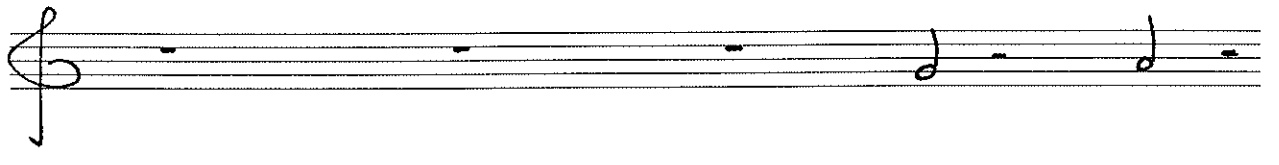
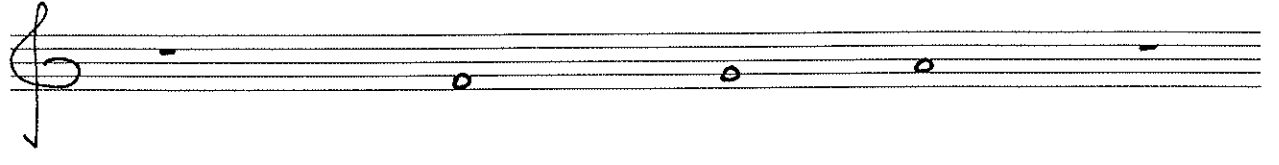
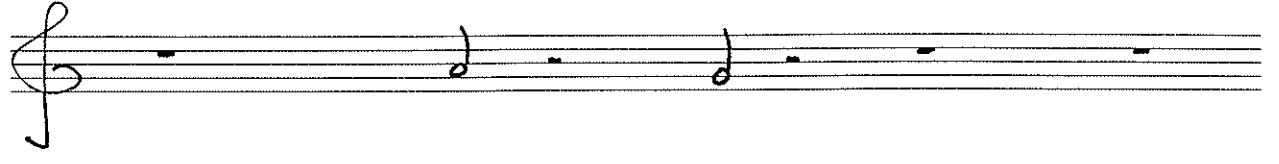
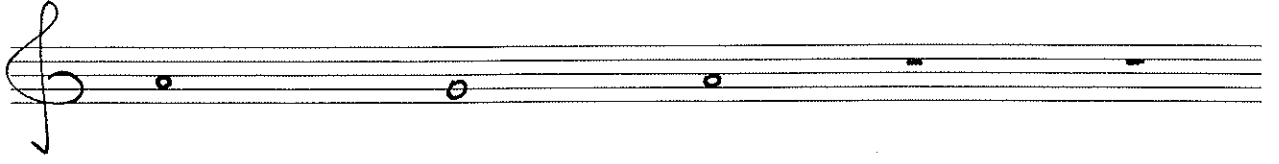


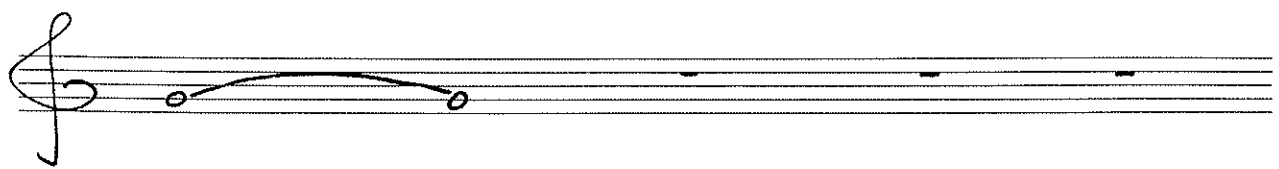
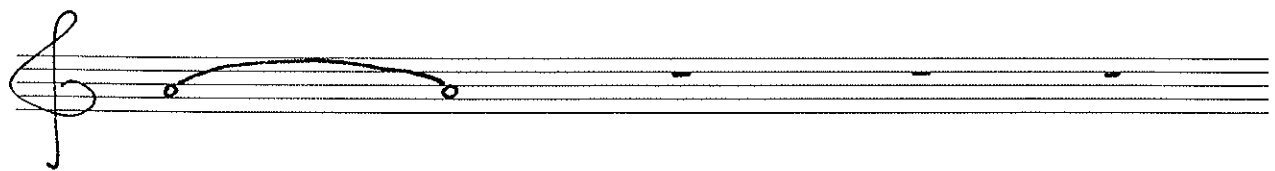
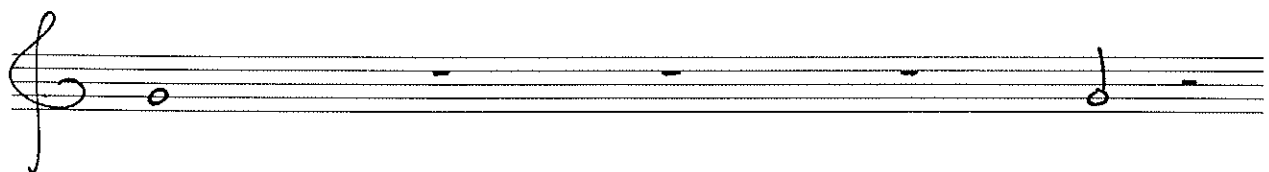
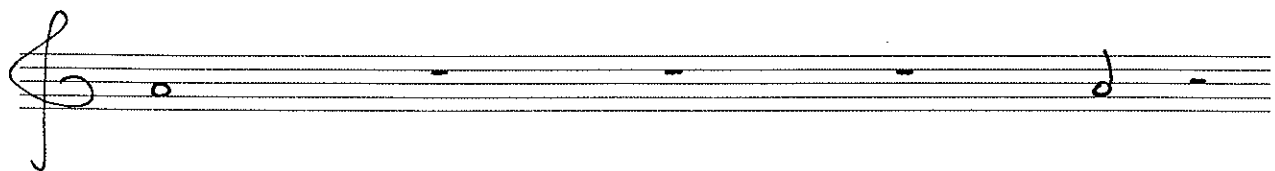
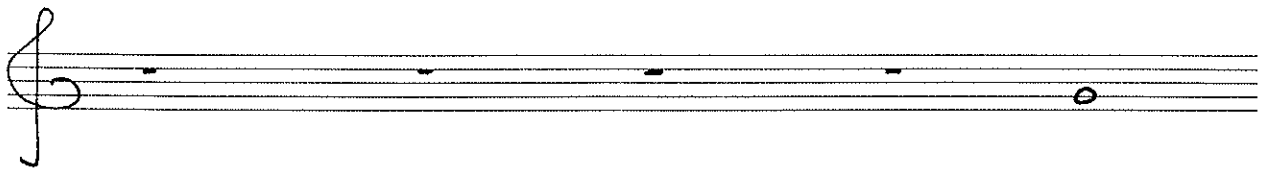
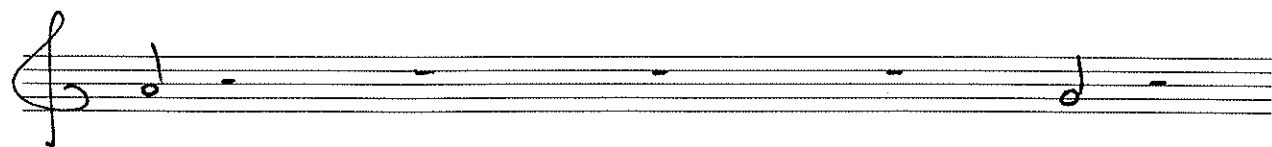


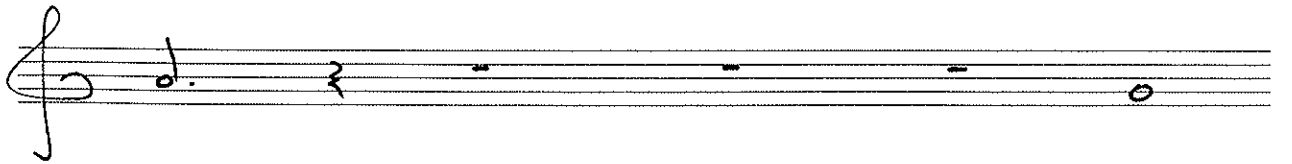
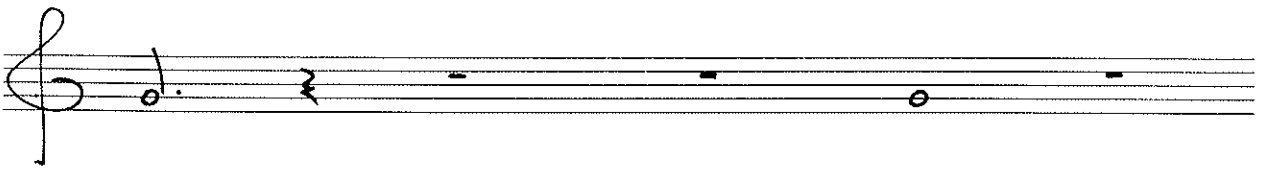
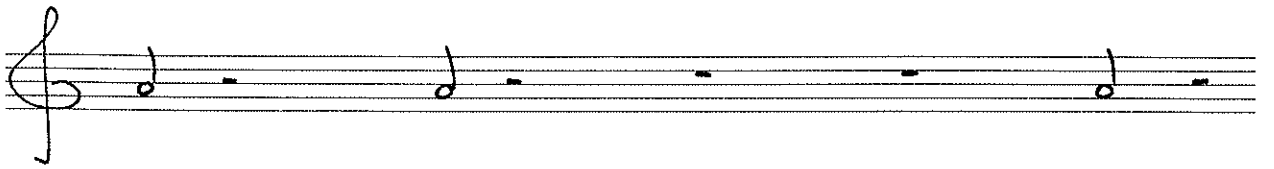
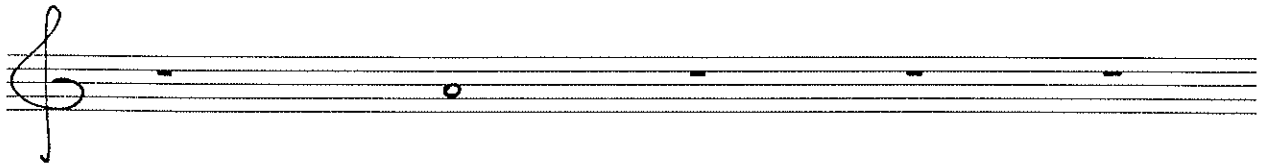
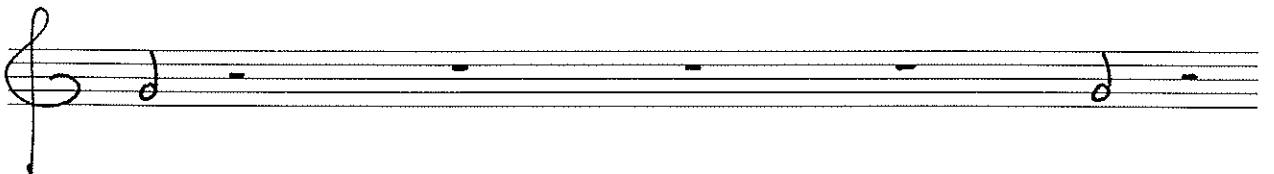
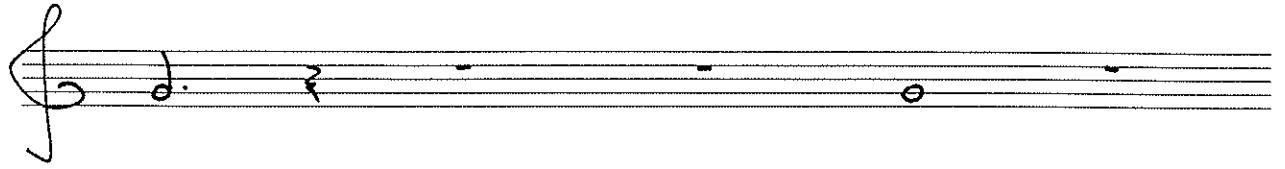
A handwritten musical score consisting of ten staves, each beginning with a treble clef. The notation is as follows:

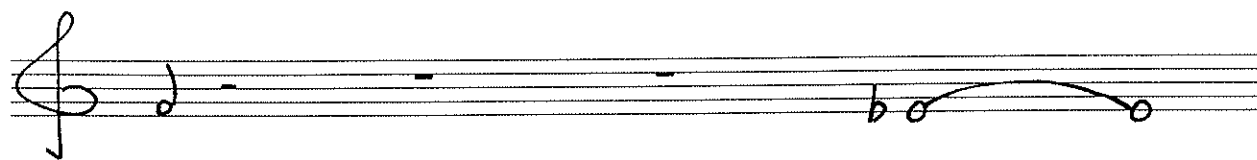
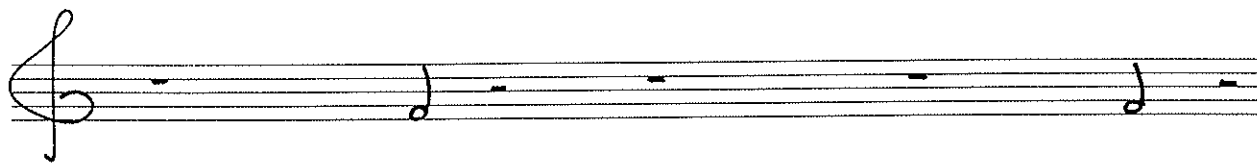
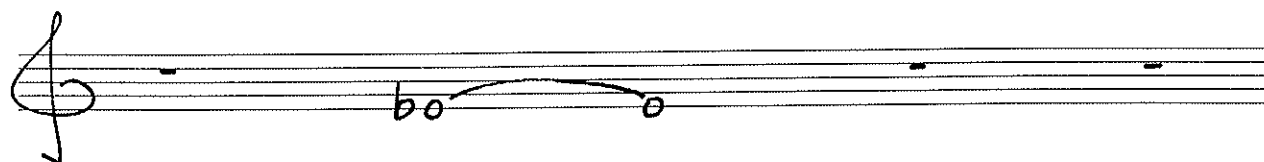
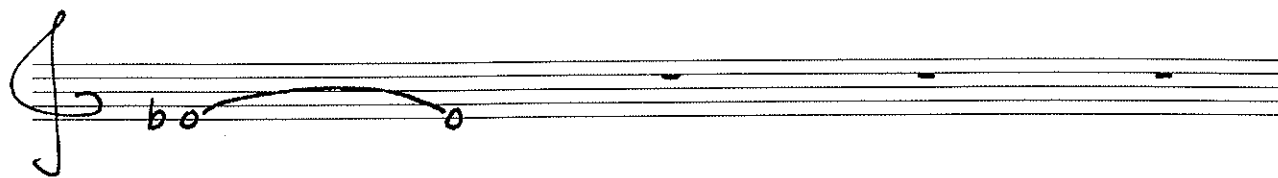
- Staff 1: Four quarter notes on the lines G4, A4, B4, and C5.
- Staff 2: Five rests on the lines G4, A4, B4, C5, and D5.
- Staff 3: Four quarter notes on the lines G4, A4, B4, and C5.
- Staff 4: Five rests on the lines G4, A4, B4, C5, and D5.
- Staff 5: Four quarter notes on the lines G4, A4, B4, and C5.
- Staff 6: Five rests on the lines G4, A4, B4, C5, and D5.
- Staff 7: Four quarter notes on the lines G4, A4, B4, and C5.
- Staff 8: Five rests on the lines G4, A4, B4, C5, and D5.
- Staff 9: Four quarter notes on the lines G4, A4, B4, and C5.
- Staff 10: Five rests on the lines G4, A4, B4, C5, and D5.

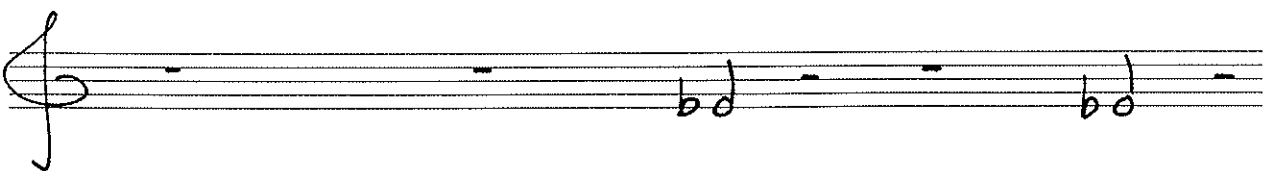
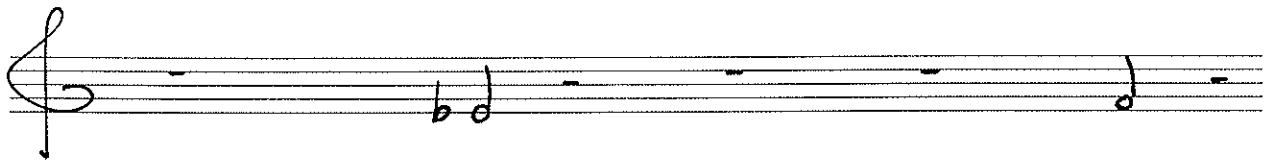
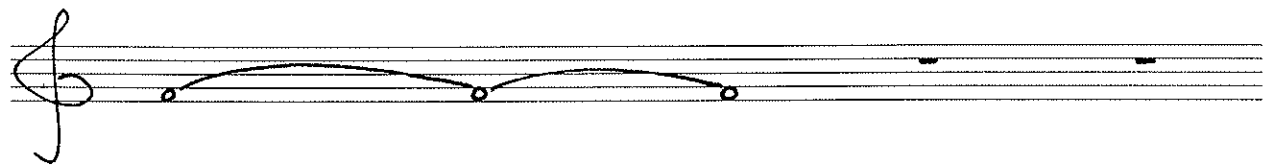
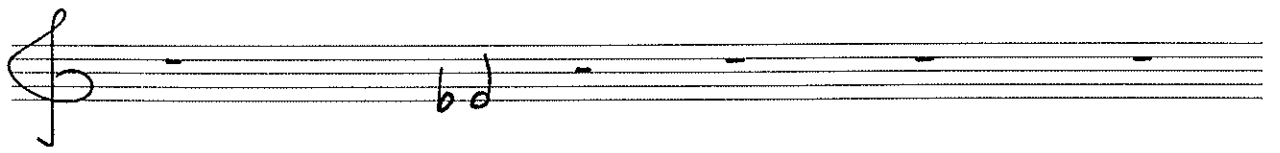
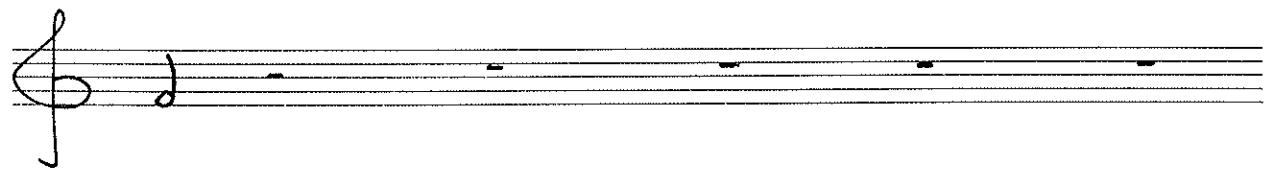
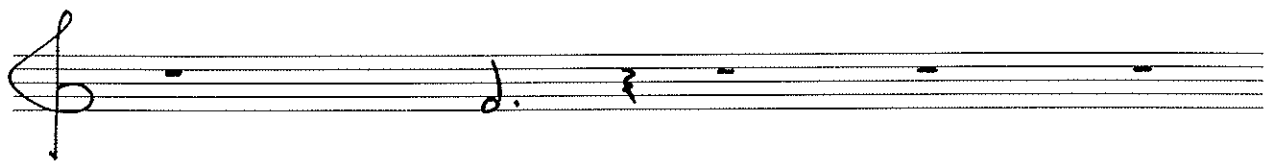
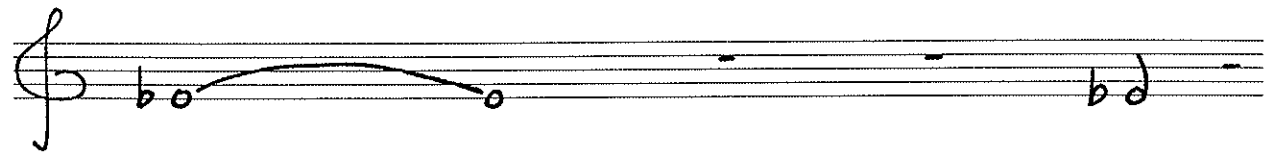
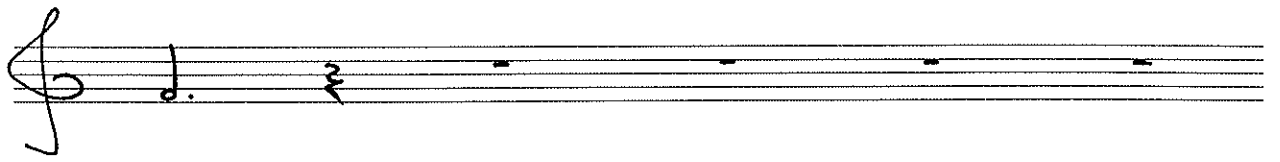
A handwritten musical score consisting of ten staves. Each staff begins with a treble clef. The notation is sparse, featuring a series of notes and rests. The notes are mostly quarter notes, with some half notes and rests interspersed. The notes are written in a simple, hand-drawn style. The rests are represented by short horizontal lines on the staff. The overall appearance is that of a student's musical exercise or a simple composition.











This image displays ten staves of handwritten musical notation. Each staff begins with a treble clef. The notation consists of notes, rests, and slurs. The first, third, fifth, seventh, and ninth staves each feature a slur over two notes. The second, fourth, sixth, and eighth staves feature a sequence of notes and rests, including a half note followed by a quarter note, and a quarter note followed by a half note. The tenth staff features a slur over two notes. The handwriting is clear and consistent throughout the piece.