

some tunes
vol. V
for one performer

eva-maria houben
2007

some tunes

vol. V

for one performer

eva-maria houben

2007

ein tune pro seite.

leise, leicht und zart.

die oktavlage ist pro tune festzulegen.

✓ : eine zäsur, ein kurzes innehalten und verweilen.

einige tunes auswählen und in freier reihenfolge spielen.

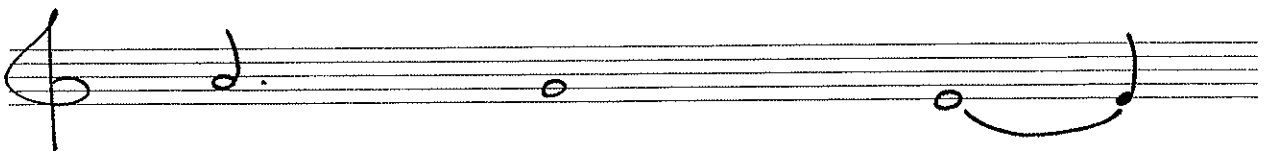
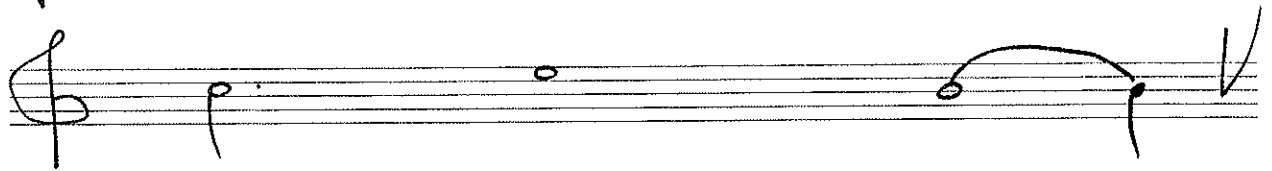
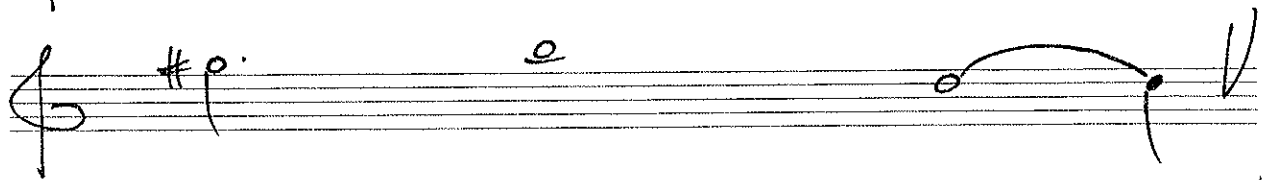
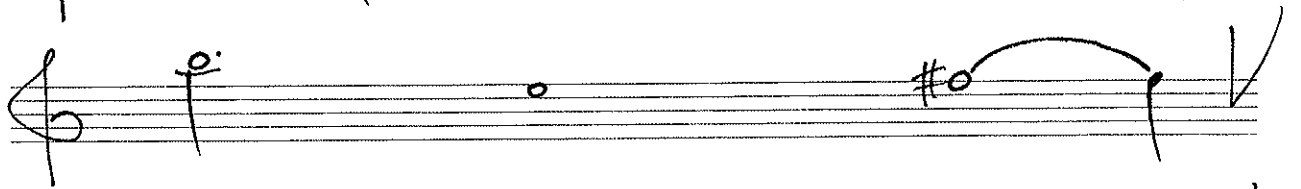
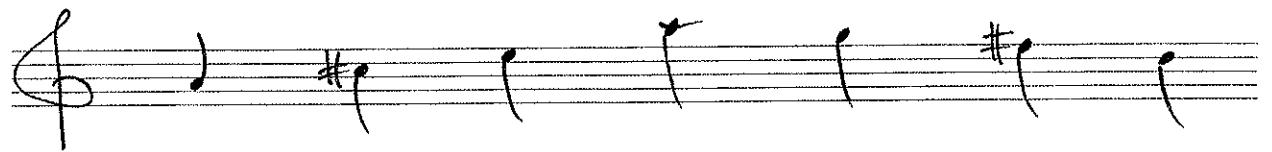
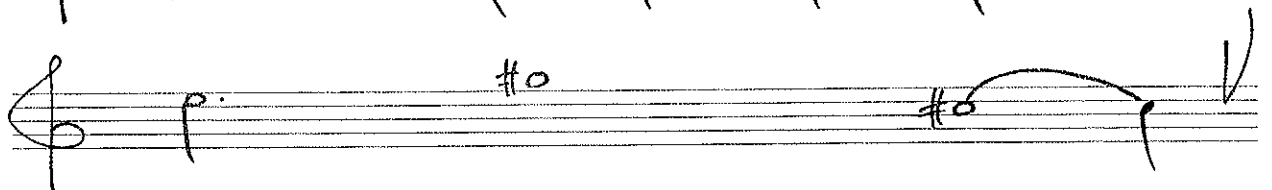
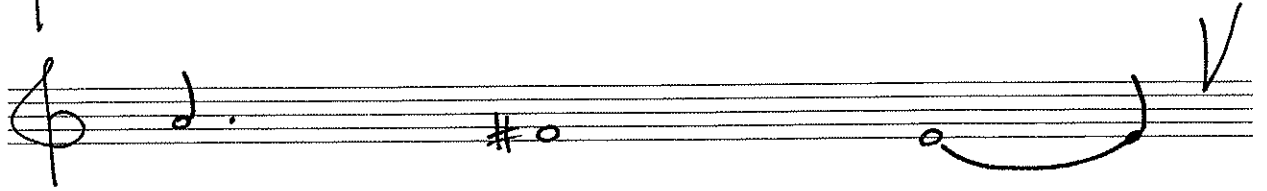
one tune per page.

quiet, soft and tender.

determine the register per tune.

✓ : a pause, a short stay.

choose some tunes and play them in free order.

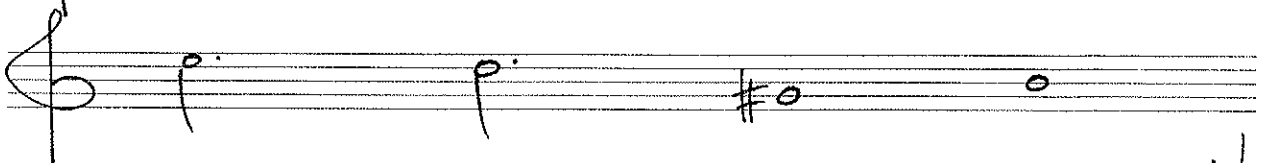
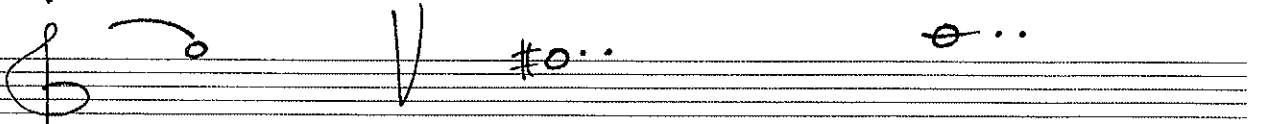
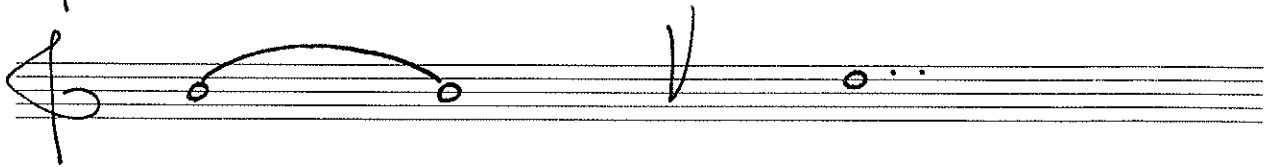
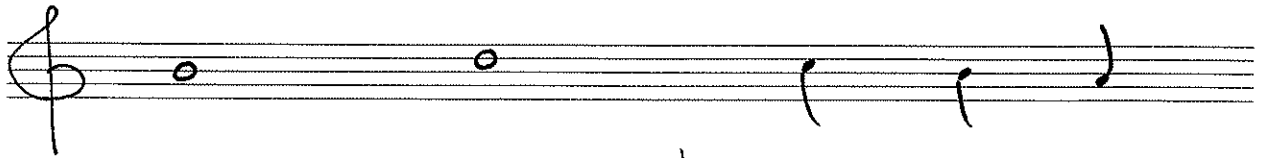


This image shows a handwritten musical score consisting of two systems, each with eight staves. The notation is written in black ink on white paper. The first system includes a treble clef on the first staff, a key signature of one flat (B-flat) on the second staff, and a common time signature (C) on the third staff. The melody in the first system is: C4 (quarter), B3 (quarter), A3 (quarter), G3 (quarter), F3 (quarter), E3 (quarter), D3 (quarter), C3 (quarter). The bass line in the first system is: C3 (quarter), B2 (quarter), A2 (quarter), G2 (quarter), F2 (quarter), E2 (quarter), D2 (quarter), C2 (quarter). The second system continues the melody: D3 (quarter), E3 (quarter), F3 (quarter), G3 (quarter), A3 (quarter), B3 (quarter), C4 (quarter), B3 (quarter). The bass line in the second system is: C3 (quarter), B2 (quarter), A2 (quarter), G2 (quarter), F2 (quarter), E2 (quarter), D2 (quarter), C2 (quarter). The notation includes various note values, rests, and accidentals (flats) for the bass line. There are also some handwritten annotations like 'b' and 'o' near the notes.

A handwritten musical score consisting of ten staves. The notation is in a single system, likely for a single melodic line. The notes are written in a cursive, handwritten style. The staves contain various rhythmic values, including quarter notes, eighth notes, and dotted notes. There are several accidentals, including flats (b) and a double flat (bb). The score is organized into measures, with some measures containing multiple notes. The overall appearance is that of a student's or composer's draft manuscript.

A handwritten musical score consisting of ten staves. The notation is written in treble clef. The first staff begins with a treble clef, a whole note with a sharp sign (#), and a dotted whole note. The second staff contains a half note, a dotted half note with a sharp sign (#), and a quarter note with a sharp sign (#). The third staff features a quarter note, a quarter note, a quarter note, a quarter note, and a whole note with a sharp sign (#). The fourth staff starts with a whole note with a sharp sign (#), followed by a slur over a half note and a quarter note, then a whole note, and ends with a fermata. The fifth staff begins with a dotted whole note, followed by a quarter note with a sharp sign (#), a quarter note, and a dotted half note with a sharp sign (#). The sixth staff contains a dotted half note, a quarter note, a quarter note, a quarter note, and a quarter note. The seventh staff starts with a quarter note with a sharp sign (#), a quarter note with a sharp sign (#), a whole note, a slur over a half note and a quarter note, and ends with a fermata. The eighth staff consists of a quarter note with a sharp sign (#), a quarter note, a quarter note, a quarter note, a quarter note, and a quarter note. The ninth staff begins with a quarter note, a whole note with a sharp sign (#), a whole note with a sharp sign (#), and a slur over a half note and a quarter note.

A handwritten musical score consisting of ten staves. The notation is written in a cursive style on five-line staves. The first staff begins with a treble clef and a key signature of one sharp (F#). The notes are: F#4 (quarter), G4 (quarter), F#4 (quarter), E4 (quarter), D4 (quarter), and C4 (half). The second staff continues with: C4 (half), D4 (quarter), E4 (quarter), F#4 (quarter), and a slur over G4 (quarter) and A4 (quarter). The third staff starts with a whole rest, followed by: B4 (quarter), C5 (quarter), a slur over D5 (quarter) and E5 (quarter), and a double bar line. The fourth staff contains: F#4 (quarter), G4 (quarter), A4 (quarter), B4 (quarter), C5 (quarter), and D5 (quarter). The fifth staff begins with a treble clef and a key signature of one sharp (F#), followed by: F#4 (quarter), G4 (quarter), A4 (quarter), B4 (quarter), a slur over C5 (quarter) and D5 (quarter), and E5 (quarter). The sixth staff starts with a treble clef and a key signature of one sharp (F#), followed by: F#4 (quarter), G4 (quarter), A4 (quarter), a slur over B4 (quarter) and C5 (quarter), and a double bar line. The seventh staff begins with a treble clef and a key signature of one sharp (F#), followed by: F#4 (quarter), G4 (quarter), A4 (quarter), a slur over B4 (quarter) and C5 (quarter), and a double bar line. The eighth staff continues with: D5 (quarter), E5 (quarter), F#4 (quarter), G4 (quarter), A4 (quarter), and B4 (quarter). The ninth staff starts with a treble clef and a key signature of one sharp (F#), followed by: a slur over C5 (quarter) and D5 (quarter), E5 (quarter), F#4 (quarter), and a slur over G4 (quarter) and A4 (quarter). The tenth and final staff begins with a treble clef and a key signature of one sharp (F#), followed by: a slur over B4 (quarter) and C5 (quarter), D5 (quarter), E5 (quarter), F#4 (quarter), and a slur over G4 (quarter) and A4 (quarter).

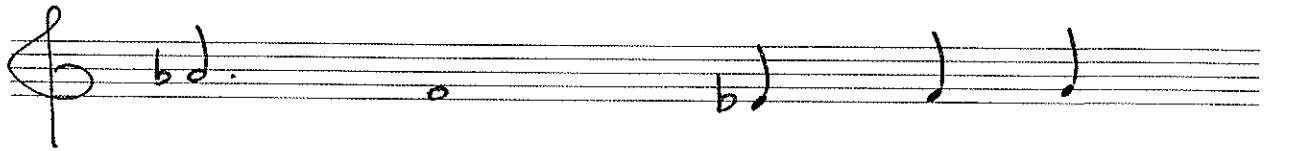
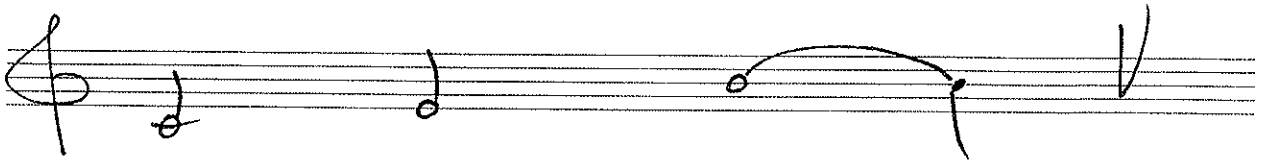
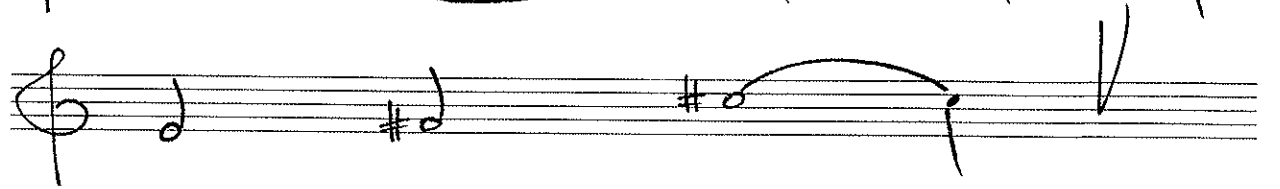
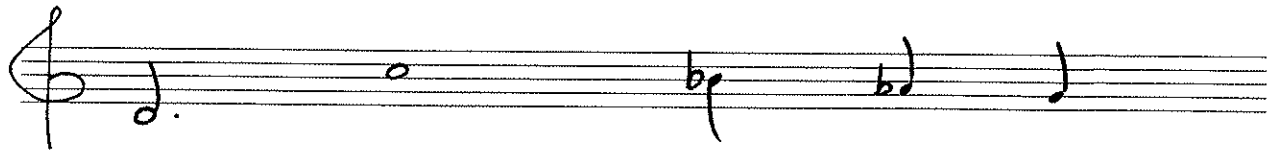


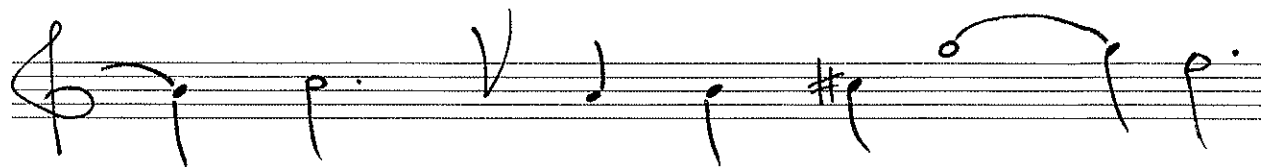
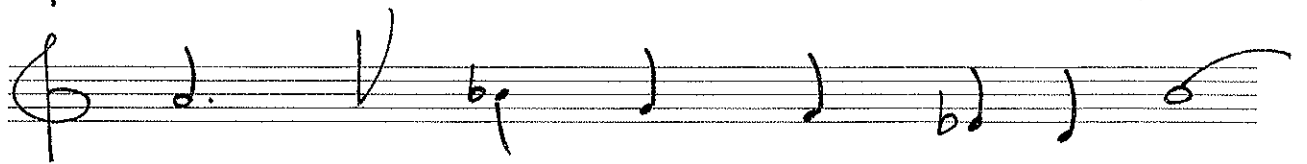
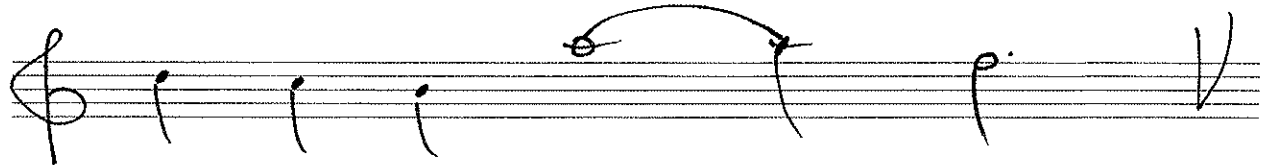
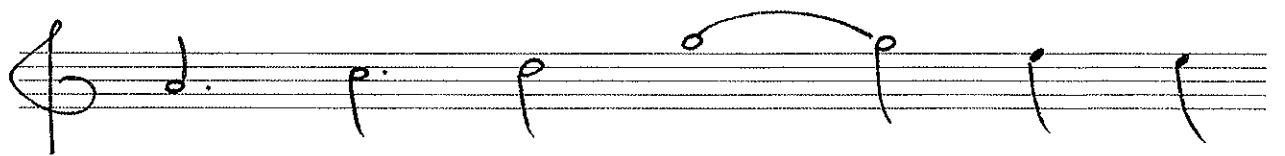
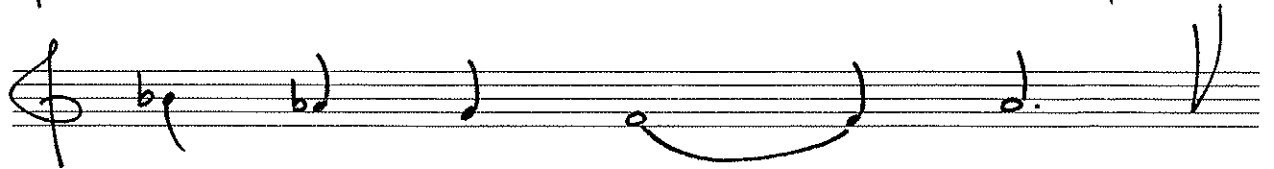
A handwritten musical score consisting of ten staves, each beginning with a treble clef. The notation is as follows:

- Staff 1:** Quarter notes G4, A4, B4, C5, B4, A4.
- Staff 2:** Quarter rest, quarter note G4 with a *p.* dynamic marking, a slur over a quarter note A4 and a quarter note B4, and a final quarter note C5.
- Staff 3:** Quarter notes G4 with a *#p* dynamic marking, A4 with a *#p* dynamic marking, B4, C5, B4, A4.
- Staff 4:** Quarter rest, quarter note G4, a slur over a quarter note A4 and a quarter note B4, and a final quarter note C5.
- Staff 5:** Quarter notes G4, A4, B4, C5, B4, A4.
- Staff 6:** Quarter note G4 with a *#p* dynamic marking, a quarter note A4 with a *#p.* dynamic marking, a slur over a quarter note B4 and a quarter note C5, and a final quarter note G4.
- Staff 7:** Quarter notes G4, A4, B4, C5, B4, A4.
- Staff 8:** A slur over a quarter note G4 and a quarter note A4, followed by a quarter rest, and then quarter notes B4, C5, B4, A4.
- Staff 9:** Quarter rest, quarter note G4, a slur over a quarter note A4 and a quarter note B4, and a final quarter note C5.

A handwritten musical score consisting of ten staves, each beginning with a treble clef. The notation is as follows:

- Staff 1: Quarter note (D4), quarter note (E4), quarter note (F#4), quarter note (G4), quarter note (A4), quarter note (B4).
- Staff 2: Quarter rest, quarter note (D4), quarter note (E4), quarter note (F#4), quarter note (G4), quarter note (A4).
- Staff 3: Quarter note (D4), half note (E4-F#4), quarter note (G4), quarter note (A4).
- Staff 4: Quarter note (B4), quarter note (C5), quarter note (D5), quarter note (E5), quarter note (F#5).
- Staff 5: Quarter rest, quarter note (D5), quarter note (E5), quarter note (F#5), quarter note (G5).
- Staff 6: Quarter note (A5), half note (B5-C6), quarter note (D6), quarter note (E6).
- Staff 7: Quarter rest, quarter note (D6), quarter note (E6), quarter note (F#6), quarter note (G6).
- Staff 8: Quarter note (A6), half note (B6-C7), quarter note (D7), quarter note (E7).
- Staff 9: Quarter note (F#7), quarter note (G7), quarter note (A7), half note (B7), quarter note (C8).



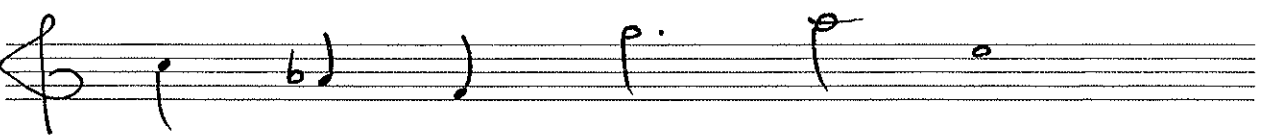
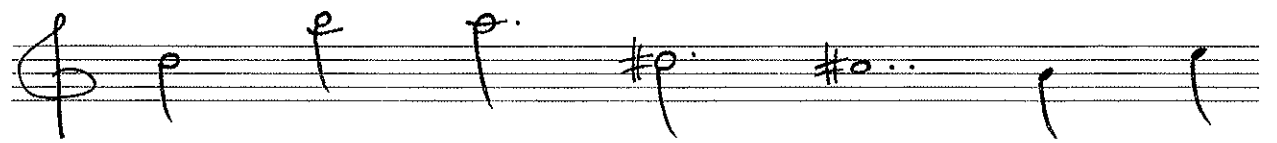


A handwritten musical score consisting of ten staves, each beginning with a treble clef. The notation includes various note values (quarter, eighth, and half notes), rests, and accidentals (sharps and naturals). Several notes are connected by slurs, indicating phrasing. The score concludes with a double bar line and repeat dots on the final staff. The handwriting is clear and legible.

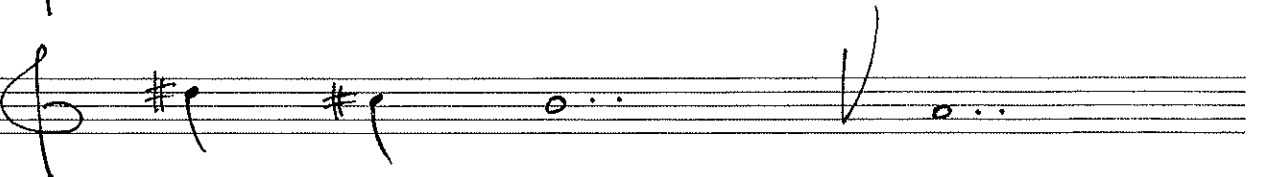
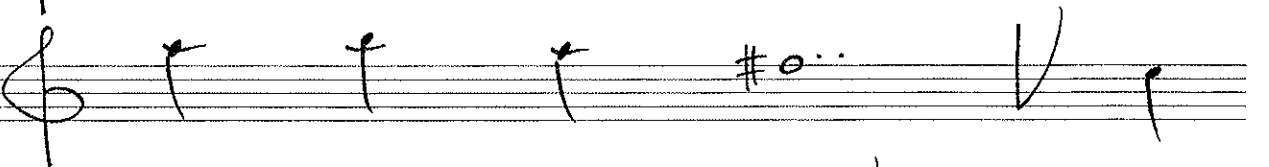
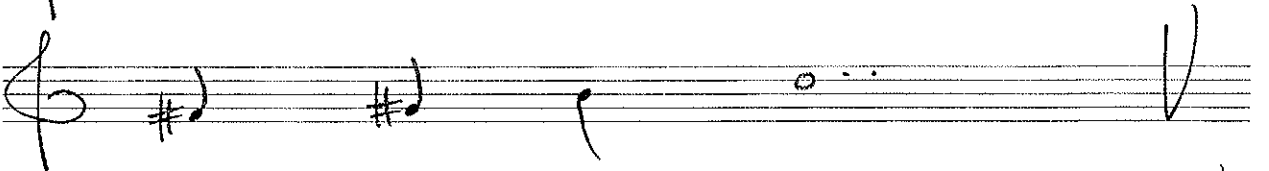
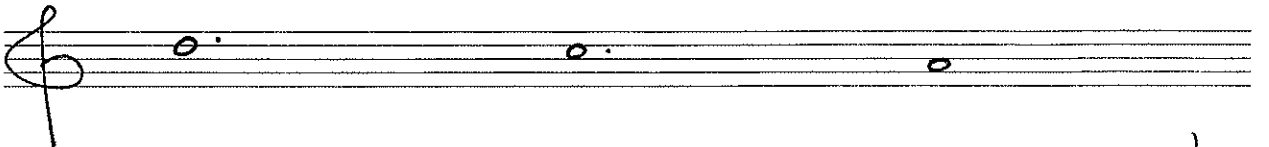
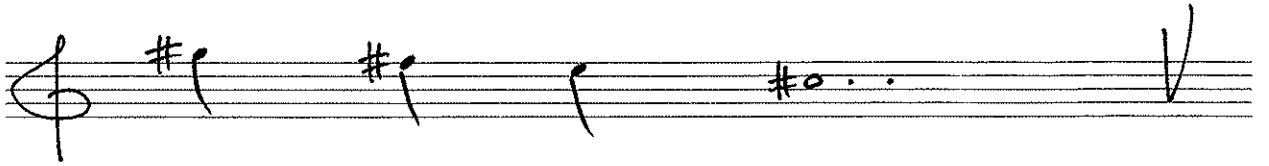
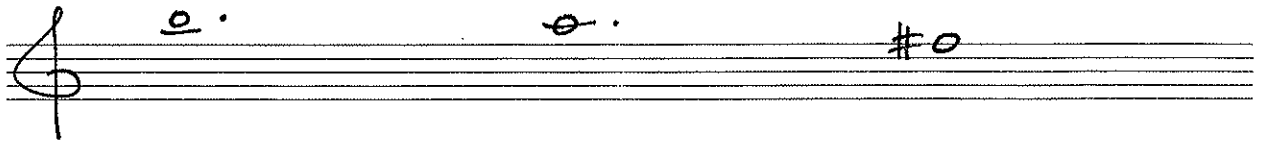
A handwritten musical score consisting of ten staves, each beginning with a treble clef. The notation includes various rhythmic values and accidentals:

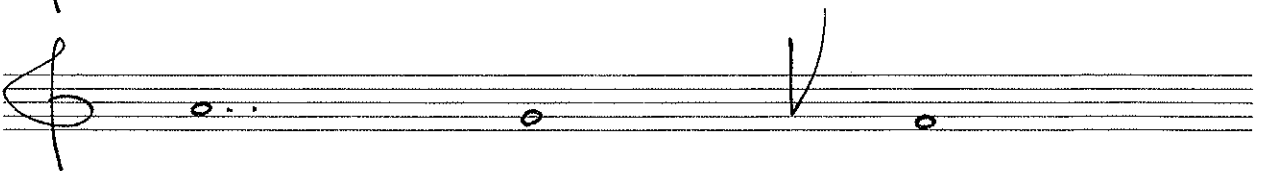
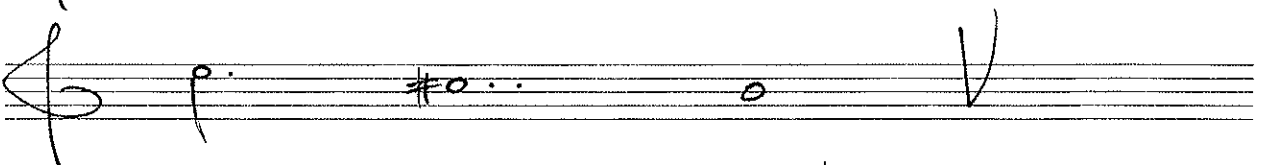
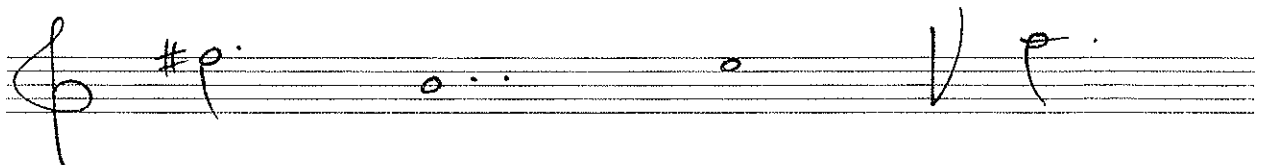
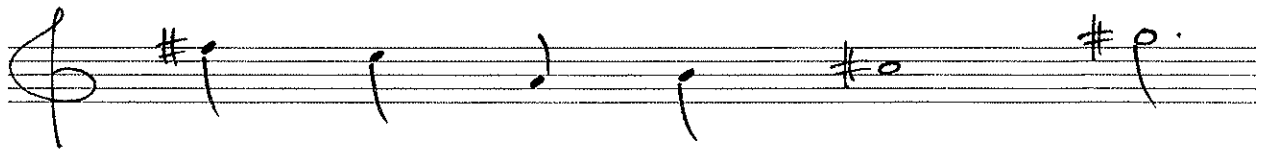
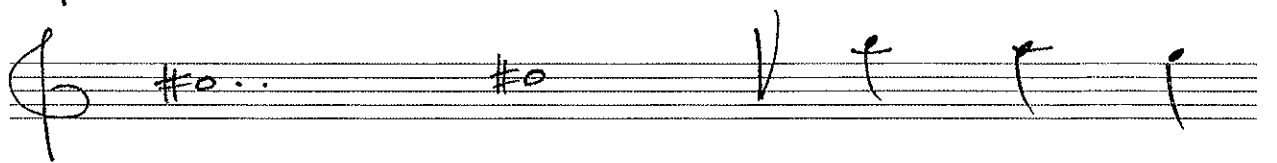
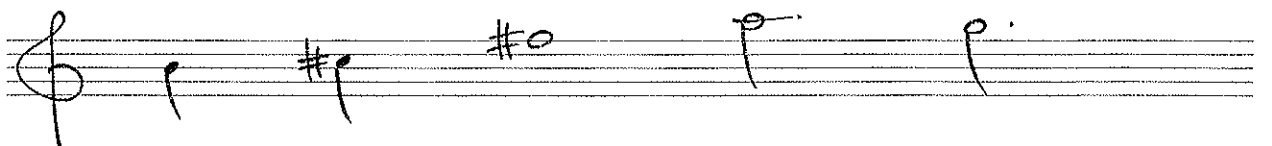
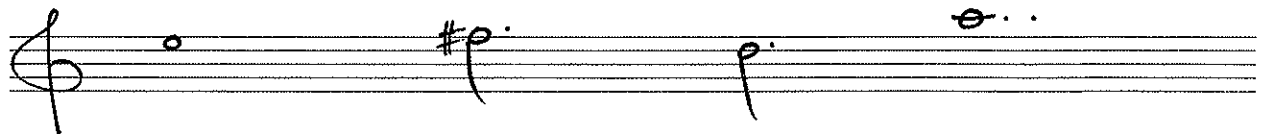
- Staff 1: Quarter note (F), dotted quarter note (G#), quarter note (A#), half note (B), quarter note (C).
- Staff 2: Quarter notes (D, E, F, G, A, B), dotted quarter note (C#).
- Staff 3: Quarter note (D), quarter note (E), quarter note (F#), dotted quarter note (G#), quarter note (A), quarter note (B) with a fermata.
- Staff 4: Dotted quarter note (C#), dotted quarter note (D), quarter note (E), half note (F), quarter note (G).
- Staff 5: Quarter note (A), quarter note (B), quarter note (C), quarter note (D#), quarter note (E).
- Staff 6: Dotted quarter note (F#), quarter note (G), quarter note (A), quarter note (B), quarter note (C) with a fermata.
- Staff 7: Dotted quarter note (D), quarter note (E), quarter note (F), half note (G), quarter note (A#).
- Staff 8: Quarter note (B), quarter note (C), quarter note (D), quarter note (E#), quarter note (F).
- Staff 9: Quarter note (G), quarter note (A), quarter note (B), quarter note (C), quarter note (D#), quarter note (E).
- Staff 10: Quarter note (F), quarter note (G), quarter note (A), quarter note (B), quarter note (C#), quarter note (D).

A page of handwritten musical notation consisting of ten staves. The notation is written in a cursive style on five-line staves. The first staff begins with a treble clef and a key signature of one sharp (F#). The notes are: a dotted quarter note on G4, a half note on A4 with a slur over it, a quarter note on B4, a quarter note on C5, and a quarter note on D5. The second staff contains: a quarter note on E4, a quarter note on F4, a half note on G4, a dotted quarter note on A4, a dotted quarter note on B4 with a sharp sign (#), and a quarter note on C5. The third staff contains: a quarter note on D5, a dotted quarter note on E5 with a sharp sign (#), a quarter note on F5, a dotted quarter note on G5 with a sharp sign (#), a half note on A5, and a double bar line. The fourth staff contains: a half note on B5, a quarter note on C6, a slur over a quarter note on D6 and a quarter note on E6, a quarter note on F6 with a flat sign (b), a quarter note on G6, and a quarter note on A6 with a sharp sign (#). The fifth staff contains: a quarter note on B5, a quarter note on C6, a half note on D6 with a sharp sign (#), a dotted quarter note on E6, a dotted quarter note on F6, and a quarter note on G6. The sixth staff contains: a quarter note on A6, a dotted quarter note on B6 with a sharp sign (#), a quarter note on C7, a dotted quarter note on D7, a half note on E7, and a double bar line. The seventh staff contains: a dotted quarter note on F6 with a sharp sign (#), a dotted quarter note on G6, a quarter note on A6, a quarter note on B6, a quarter note on C7, and a quarter note on D7. The eighth staff contains: a dotted quarter note on E7, a half note on F7, a double bar line, a quarter note on G7, a quarter note on A7, and a dotted quarter note on B7. The ninth staff contains: a half note on C8, a double bar line, a quarter note on D8, a quarter note on E8, a dotted quarter note on F8, and a half note on G8. The tenth staff contains: a half note on A8, a double bar line, a quarter note on B8, a quarter note on C9, a dotted quarter note on D9, and a half note on E9.



A page of handwritten musical notation consisting of ten staves. Each staff begins with a treble clef. The notes and rests are written in black ink on five-line staves. The notation includes various note values such as quarter notes, eighth notes, and half notes, along with rests and accidentals (sharps and naturals). The music appears to be a single melodic line. The first staff starts with a sharp sign on the second line. The second staff starts with a sharp sign on the first space. The third staff starts with a natural sign on the first space. The fourth staff starts with a sharp sign on the second line. The fifth staff starts with a natural sign on the second line. The sixth staff starts with a sharp sign on the second line. The seventh staff starts with a sharp sign on the second line. The eighth staff starts with a sharp sign on the second line. The ninth staff starts with a sharp sign on the second line. The tenth staff starts with a sharp sign on the second line.



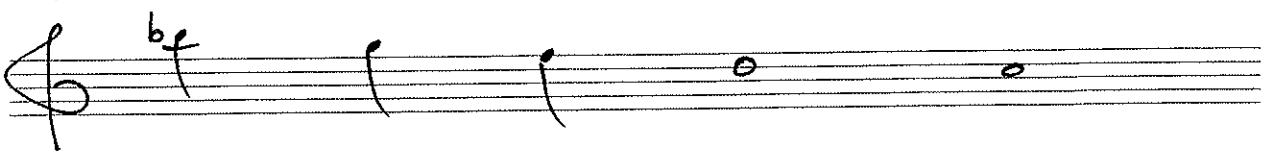
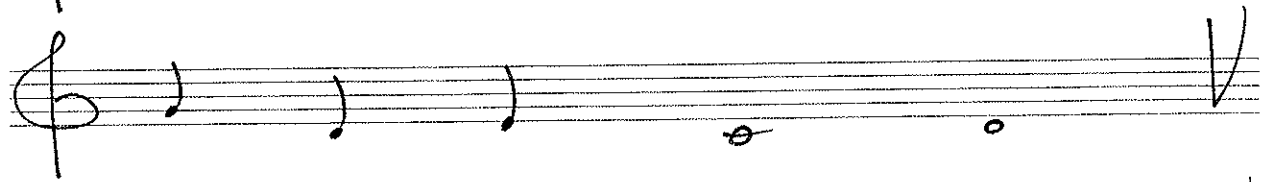
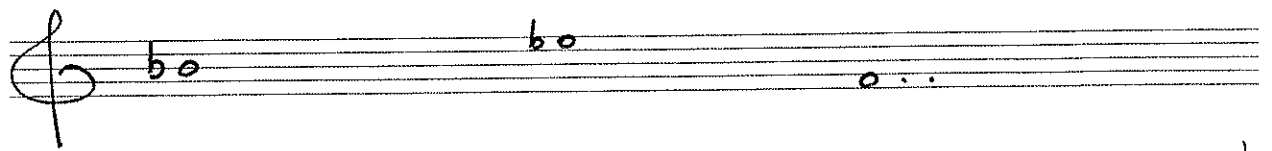
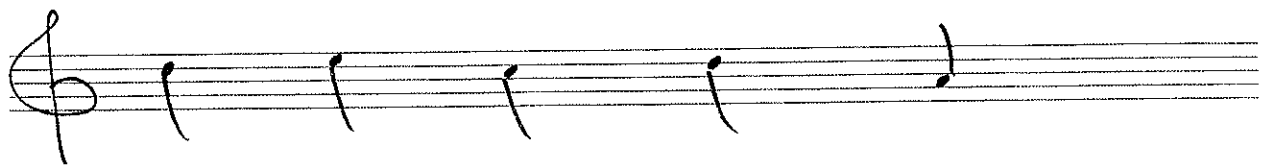
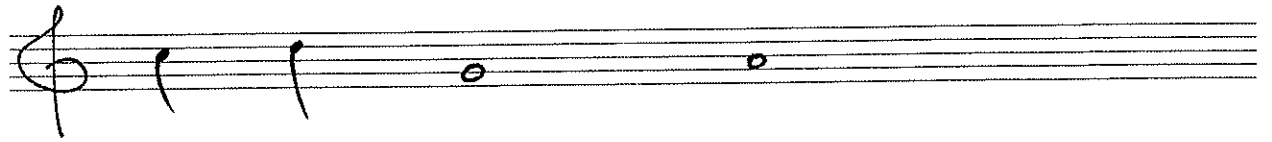
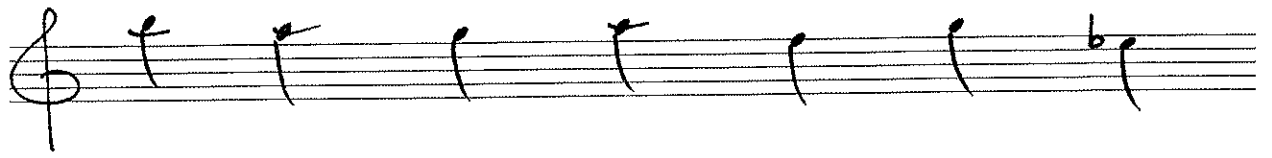


A page of handwritten musical notation consisting of ten staves. The notation is written in a single system on a five-line staff. The notes and rests are as follows:

- Staff 1: Quarter note G4, quarter note F4 (flat), quarter note E4 (flat), quarter note D4, quarter note C4, quarter note B3 (flat), quarter note A3 (flat).
- Staff 2: Quarter note G4, quarter note F4 (flat), quarter note E4 (flat), quarter note D4, quarter note C4, quarter note B3 (flat), quarter note A3 (flat).
- Staff 3: Quarter note G4, quarter note F4 (flat), quarter note E4 (flat), quarter note D4, quarter note C4, quarter note B3 (flat), quarter note A3 (flat).
- Staff 4: Quarter note G4, quarter note F4 (flat), quarter note E4 (flat), quarter note D4, quarter note C4, quarter note B3 (flat), quarter note A3 (flat).
- Staff 5: Quarter note G4, quarter note F4 (flat), quarter note E4 (flat), quarter note D4, quarter note C4, quarter note B3 (flat), quarter note A3 (flat).
- Staff 6: Quarter note G4, quarter note F4 (flat), quarter note E4 (flat), quarter note D4, quarter note C4, quarter note B3 (flat), quarter note A3 (flat).
- Staff 7: Quarter note G4, quarter note F4 (flat), quarter note E4 (flat), quarter note D4, quarter note C4, quarter note B3 (flat), quarter note A3 (flat).
- Staff 8: Quarter note G4, quarter note F4 (flat), quarter note E4 (flat), quarter note D4, quarter note C4, quarter note B3 (flat), quarter note A3 (flat).
- Staff 9: Quarter note G4, quarter note F4 (flat), quarter note E4 (flat), quarter note D4, quarter note C4, quarter note B3 (flat), quarter note A3 (flat).
- Staff 10: Quarter note G4, quarter note F4 (flat), quarter note E4 (flat), quarter note D4, quarter note C4, quarter note B3 (flat), quarter note A3 (flat).

A handwritten musical score consisting of ten staves, each beginning with a treble clef. The notation is as follows:

- Staff 1: A half note on G4, a half note on A4, a quarter note on B4, and a quarter note on C5.
- Staff 2: A flat half note on G4, a flat half note on A4, a quarter note on B4, a flat quarter note on C5, and a quarter note on D5.
- Staff 3: A flat half note on G4, a flat half note on A4, a fermata over a half note on B4, and a half note on C5.
- Staff 4: A half note on G4, a quarter note on A4, a quarter note on B4, a quarter note on C5, and a half note on D5.
- Staff 5: A half note on G4, a quarter note on A4, a flat quarter note on B4, a quarter note on C5, and a half note on D5.
- Staff 6: A half note on G4, a fermata over a half note on A4, a flat half note on B4, and a half note on C5.
- Staff 7: A quarter note on G4, a quarter note on A4, a flat half note on B4, and a half note on C5.
- Staff 8: A quarter note on G4, a quarter note on A4, a flat quarter note on B4, a flat half note on C5, a flat half note on D5, and a fermata over a half note on E5.
- Staff 9: A flat quarter note on G4, a quarter note on A4, a quarter note on B4, a half note on C5, and a half note on D5.



A handwritten musical score consisting of ten staves, each beginning with a treble clef. The notation is as follows:

- Staff 1: A whole note on G4, a whole note on A4, and a dotted whole note on Bb4.
- Staff 2: A dotted quarter note on G4, a dotted quarter note on A4, an eighth note on B4, an eighth note on C5, an eighth note on B4, and a whole note on Bb4.
- Staff 3: A whole note on G4, a dotted whole note on Bb4, a fermata over a whole note on G4, and a fermata over a whole note on A4.
- Staff 4: A whole note on G4, a dotted whole note on A4, a dotted quarter note on B4, and a dotted quarter note on C5.
- Staff 5: An eighth note on G4, an eighth note on A4, an eighth note on B4, a whole note on C5, and a whole note on B4.
- Staff 6: A dotted whole note on Bb4, a fermata over a whole note on G4, and a whole note on Bb4.
- Staff 7: A dotted whole note on Bb4, a dotted quarter note on G4, a dotted quarter note on A4, and a dotted quarter note on B4.
- Staff 8: A dotted quarter note on G4, a whole note on A4, a whole note on B4, a dotted whole note on C5, and a fermata over a whole note on B4.
- Staff 9: A quarter note on G4, a quarter note on Bb4, a quarter note on Bb4, a whole note on G4, a whole note on A4, and a dotted whole note on B4.

