

**air**

für violine und saxophon

for violin and saxophone

eva-maria houben

2006

air

für violine und saxophon

for violin and saxophone

eva-maria houben

2006

einige seiten auswählen und in freier reihenfolge spielen.

insgesamt sehr leise.

fünf bis sieben sekunden klang,

sieben bis zehn sekunden pause zwischen den klängen.

◇ : ein saxophonklang mit sehr hohem luftanteil.  
fast mehr luft als ton.

choose some pages and play in free order.

on the whole very soft.

five up to seven seconds sounds,

seven up to ten seconds silence between the sounds.

◇ : a sound (saxophone) with a great quantity of air.  
nearly more air than sound.

Handwritten musical notation on a single staff. It features a treble clef on the left. Below the staff, there are two notes: the first is a dotted quarter note with a double underline, labeled "vl." below it; the second is a quarter note with a double underline, labeled "Sax." below it. At the far right of the staff, there is a double bar line with repeat dots on both sides, and the number "4x" written above it.

Handwritten musical notation on a single staff. It features a treble clef on the left. Below the staff, there are two notes: the first is a dotted quarter note with a double underline, labeled "Sax." below it; the second is a quarter note with a double underline, labeled "vl." below it. Above the staff, there are two notes: the first is a dotted quarter note with a double underline, labeled "3x" above it; the second is a quarter note with a double underline and a sharp sign, labeled "3-5x" above it. At the far right of the staff, there is a double bar line with repeat dots on both sides.

A single musical staff in treble clef. Above the staff, there are handwritten markings: a treble clef symbol, a flat sign (b), and a diamond symbol (◊). Below the staff, the word "ve." is written twice. On the right side of the staff, there is a sharp sign (#) and the number "3x". The staff ends with a double bar line and repeat dots.

A single musical staff in treble clef. Above the staff, the number "6x" is written. Below the staff, the word "Sax." is written twice. On the right side of the staff, there is a sharp sign (#). The staff ends with a double bar line and repeat dots.

A single staff of music with a treble clef. It contains three diamond-shaped notes. The first note is on the second line and is labeled "Sax." below it. The second note is on the second space and is labeled "Sax." below it. Above the second note is the text "3x". The third note is on the second line and is labeled "Sax." below it. Above the third note is the text "4x". There are repeat markings (double dots) between the second and third notes, and at the end of the staff.

A single staff of music with a treble clef. It contains three notes. The first note is on the second line, has a diamond-shaped stem, and is labeled "vl." below it. Above it is a handwritten symbol consisting of a vertical line with a curved top and several horizontal lines. The second note is on the second space and is labeled "Sax." below it. Above it is the text "2x". The third note is on the second line, has a diamond-shaped stem, and is labeled "vl." below it. Above it is a handwritten symbol consisting of a vertical line with a curved top and several horizontal lines. There are repeat markings (double dots) between the second and third notes, and at the end of the staff.

Handwritten musical notation on a single staff. It features a treble clef, a key signature of one sharp (F#), and a common time signature (C). The notation includes a sequence of notes: a whole note F# (labeled 'Sax.'), a dotted quarter note (labeled 'vl.'), a quarter note Bb (labeled 'Sax.'), a quarter note F# (labeled 'Sax.'), and a dotted quarter note (labeled 'vl.'). Above the staff, there are two '3x' markings indicating triplets over the Bb and F# notes. The piece ends with a double bar line.

Handwritten musical notation on a single staff. It features a treble clef, a key signature of one flat (Bb), and a common time signature (C). The notation includes a sequence of notes: a whole note Bb (labeled 'vl.'), a quarter note (labeled '4x'), a quarter note F# (labeled 'vl.'), and a dotted quarter note (labeled 'Sax.'). Above the staff, there are two '4x' markings indicating quadruplets over the first and second notes, and a '4-7x' marking indicating a sextuplet over the final note. The piece ends with a double bar line.

Sax.

ve.

5x

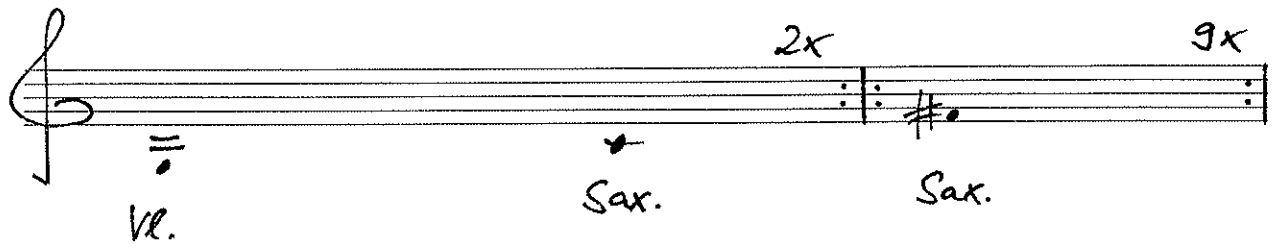
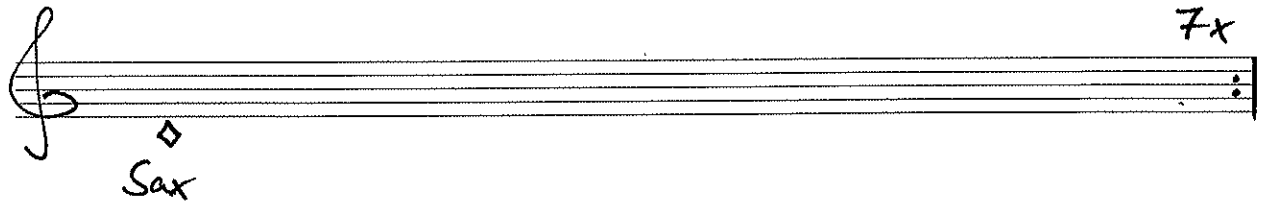
Sax.

Sax.

3x

3-5x





7

Handwritten musical notation on a single staff with a treble clef. The notation includes a diamond symbol labeled "Sax." below the staff. Above the staff, there is a "3x" marking above a repeat sign, followed by a chord symbol "#o" with a stem and three horizontal lines above it, and a "6x" marking above another repeat sign. Below the staff, the label "vl." is written.

Handwritten musical notation on a single staff with a treble clef. The staff contains two small dots, one near the beginning and one near the end.

8

Handwritten musical notation on a single staff. It starts with a treble clef. Above the staff, there is a sharp sign (#) and a note with a stem and a flag. Below the staff, the word "vl." is written. Further right, there is a note with a stem and a flag, and below it, the word "vl.". At the end of the staff, there is a double bar line and the text "4x".

Handwritten musical notation on a single staff. It starts with a treble clef. Below the staff, the word "Sax." is written. Further right, there is a double bar line with "7x" above it. Below the staff, the word "Sax." is written with a diamond symbol above it. To the right of that, there is a note with a stem and a flag, and below it, the word "vl.". At the end of the staff, there is a double bar line and the text "2x".

Handwritten musical notation on a single staff. It features a treble clef, a diamond-shaped note on the second line, a diamond-shaped note on the third line with a sharp sign and a double bar line above it, a diamond-shaped note on the second line with "3x" above it, and a diamond-shaped note on the second line with "6x" above it. Labels "Sax.", "vl.", and "Sax." are written below the staff.

Handwritten musical notation on a single staff. It features a treble clef, a diamond-shaped note on the second line with a sharp sign and a double bar line above it, a diamond-shaped note on the second line with "3x" above it, a diamond-shaped note on the second line with "4x" above it, and a diamond-shaped note on the second line with "7x" above it. Labels "vl.", "Sax.", and "Sax." are written below the staff.

Handwritten musical notation on a single staff. It features a treble clef, a key signature of one flat (B-flat), and a common time signature. The notation includes a series of vertical lines representing notes, with a '2x' repeat sign at the end. Instrument labels 'vl.' and 'Sax.' are written below the staff, with arrows pointing to specific notes.

Handwritten musical notation on a single staff. It features a treble clef, a key signature of one sharp (F#), and a common time signature. The notation includes a series of vertical lines representing notes, with '3x' and '5x' repeat signs. Instrument labels 'Sax.', 'vl.', and 'Sax.' are written below the staff, with arrows pointing to specific notes.

Handwritten musical notation on a single staff with a treble clef. The notation includes a repeat sign with "7x" written above it. Above the repeat sign is a sharp sign (#) and a note. At the end of the staff, there is a "4x" marking. Below the staff, the label "Sax." is written with a small arrow pointing to the staff, and "vl." is written below the repeat sign.

Handwritten musical notation on a single staff with a treble clef. The notation includes two repeat signs with "3x" written between them. Above each repeat sign is a note with a sharp sign. Below the staff, the label "Sax." is written with a small diamond symbol below it, and "vl." is written below each repeat sign.

Handwritten musical notation on a single staff. The staff begins with a treble clef. The first measure contains a flat key signature (B-flat) and a triplet of eighth notes. Below the staff, the label "vl." is written. The second measure contains a single eighth note. Below the staff, the label "Sax." is written. Above the staff, the label "3x" is written. The third measure contains a treble clef, a flat key signature, and a triplet of eighth notes. Below the staff, the label "vl." is written. The fourth measure contains a single eighth note. Below the staff, the label "Sax." is written. Above the staff, the label "3x" is written. The staff ends with a double bar line.

Handwritten musical notation on a single staff. The staff begins with a treble clef. The first measure contains a sharp key signature (F-sharp) and a triplet of eighth notes. Below the staff, the label "vl." is written. The second measure contains a single eighth note. Below the staff, the label "Sax." is written. Above the staff, the label "3x" is written. The staff ends with a double bar line.

A single staff of music with a treble clef. It contains four notes: a quarter note on the first line (F4), a quarter note on the second line (G4), a quarter note on the second space (A4), and a quarter note on the first space (F4). Above the first note is the label "Sax.". Above the second note is "vl.". Above the third note is "3x" and a multi-measure rest symbol (three horizontal lines with a vertical line through them). Above the fourth note is "3x" and a multi-measure rest symbol. Below the staff, the labels "Sax.", "vl.", "vl.", and "Sax." are written under their respective notes.

A single staff of music with a treble clef. It contains two notes: a quarter note on the first space (F4) and a quarter note on the second space (A4). Above the first note is a diamond symbol and the label "Sax.". Above the second note is "5x" and a multi-measure rest symbol (five horizontal lines with a vertical line through them). Above the multi-measure rest is a sharp sign (#) and a multi-measure rest symbol (three horizontal lines with a vertical line through them). Above the end of the staff is the label "2x" and a multi-measure rest symbol. Below the staff, the labels "Sax." and "vl." are written under their respective notes.



Handwritten musical notation on a single staff. The staff begins with a treble clef. Below the staff, there is a diamond symbol and the label "Sax.". Further right, there is a dot with an arrow pointing to it, and the label "Sax." below it. The notation includes a repeat sign with "3x" written above it, followed by a double bar line, and another repeat sign with "5x" written above it. Below the staff, the label "vl." is written under a double bar line.

Handwritten musical notation on a single staff. The staff begins with a treble clef, a key signature of one sharp (F#), and a time signature of 3/4. Below the staff, the label "vl." is written. Further right, there is a dot with an arrow pointing to it, and the label "Sax." below it. The notation includes a repeat sign with "7x" written above it, followed by a double bar line, and another repeat sign with "4-7x" written above it. Below the staff, the label "Sax." is written under a diamond symbol.

Handwritten musical notation on a single staff. It starts with a treble clef and a key signature of one flat (B $\flat$ ). Above the staff, there is a handwritten note with a flat and a diamond symbol, and a vertical line with three horizontal bars below it. The staff contains two measures, each marked with "7x" above and a diamond symbol below. The first measure has a double bar line with repeat dots. The second measure has a diamond symbol above and "Sax." below. The staff ends with a double bar line and repeat dots.

Handwritten musical notation on a single staff. It starts with a treble clef. The staff contains three measures. The first measure has a dot below and "Sax." below. The second measure has a diamond symbol above and "Sax." below. The third measure has "3x" above, a sharp symbol above, a dot below, and "Sax." below. The staff ends with a double bar line.

Handwritten musical notation on a single staff. The staff begins with a treble clef. Below the staff, there are two diamond-shaped markers, each with the label "Sax." underneath. Further to the right, the label "4x" is written above the staff. At the end of the staff, there is a double bar line followed by a vertical line and a small sketch of a musical staff with notes and a treble clef. Below this sketch is the label "vl.".

Handwritten musical notation on a single staff. The staff begins with a treble clef. Below the staff, there are two diamond-shaped markers, each with the label "Sax." underneath. Further to the right, the label "4x" is written above the staff. At the end of the staff, there is a double bar line followed by a vertical line and a small sketch of a musical staff with notes and a treble clef. Below this sketch is the label "vl.".

Sax. Sax. 3x ve. 4x

Sax. 4x ve.