

zweihändig
für klavier
for two hands
piano

eva-maria houben

2007

zweihändig
für klavier
for two hands
piano

eva-maria houben
2007

alle klänge sind leise.

die zeilen im violinschlüssel werden mit der rechten hand, die im bass-schlüssel mit der linken hand gespielt.

ohne pedal spielen.

„legato sostenuto“:

im letzten verklängen eines klangs den nächsten bereits spielen, dabei die taste des vorhergehenden noch halten, bis dieser ganz verklungen ist.

eine hand fängt an zu spielen.

die andere setzt so ein, dass beide stimmen eine ganze zeitlang gleichzeitig zu hören sind.

einige seiten auswählen und in freier reihenfolge spielen.

all sounds are soft.

play the line in treble clef with the right hand, the line in bass clef with the left hand.

play without using the right pedal.

„legato sostenuto“:

during the last decay of a sound the next sound appears; keep down the key of the decaying sound until this one has vanished completely.

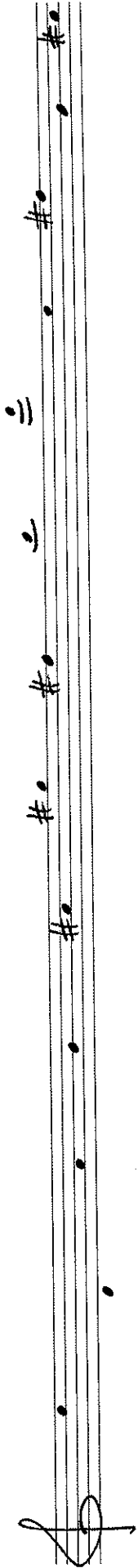
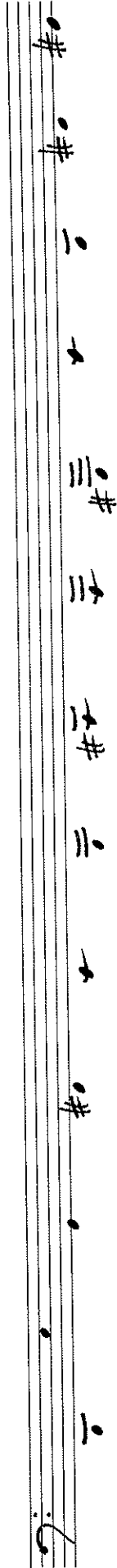
one hand begins to play.

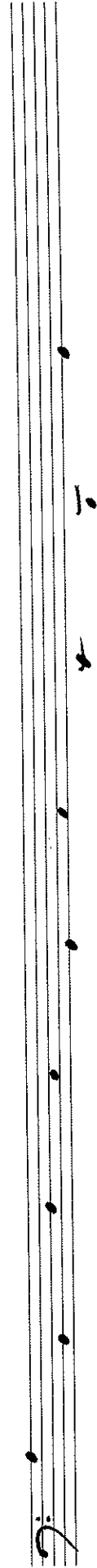
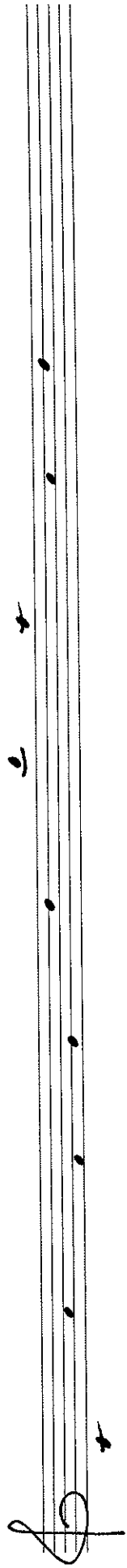
the other hand starts in a way that both voices may be heard simultaneously for a while.

choose some pages of the score and play in free order.

Handwritten musical notation on a five-line staff. The notation includes various symbols such as dots, vertical lines, and stylized characters, possibly representing a specific musical system or shorthand. The symbols are arranged in a sequence across the staff.

Handwritten musical notation on a five-line staff. The notation consists of several dots placed at different positions on the staff, possibly representing a specific musical system or shorthand. The dots are arranged in a sequence across the staff.





Handwritten musical notation on a five-line staff. It begins with a treble clef on the left. The notation consists of several dots placed on the lines and spaces of the staff. From left to right, there are dots on the first space, the second line, the second space, the third line, and the third space. To the right of these dots, there is a handwritten 'b' with a horizontal line above it, followed by a '+' sign.

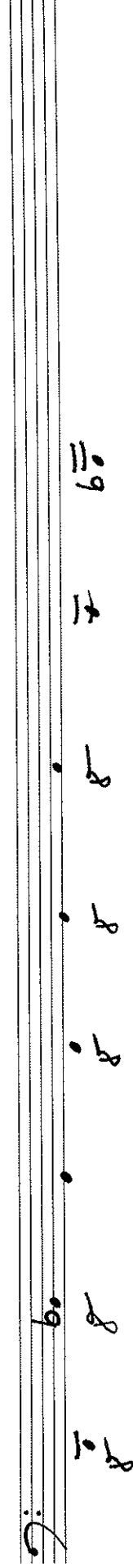
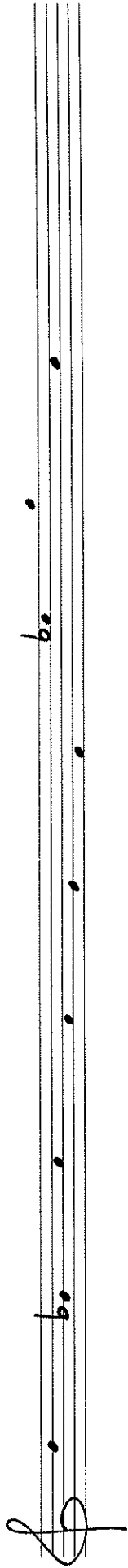
Handwritten musical notation on a five-line staff. It begins with a treble clef on the left. The notation consists of several dots placed on the lines and spaces of the staff. From left to right, there are dots on the first space, the second line, the second space, the third line, and the third space. To the right of these dots, there is a '+' sign, followed by a 'b' with a horizontal line above it, and finally a '9' with a horizontal line above it.

Handwritten musical notation on a five-line staff. The notation includes a treble clef at the bottom left, a key signature of one sharp (F#) at the top right, and a time signature of 9/8 in the middle. The notes are: a dotted quarter note on the first line (F#), a dotted quarter note on the second line (G), a dotted quarter note on the second space (A), a dotted quarter note on the third line (B), a dotted quarter note on the third space (C), a dotted quarter note on the fourth line (D), a dotted quarter note on the fourth space (E), and a dotted quarter note on the fifth line (F#).

Handwritten musical notation on a five-line staff. The notation includes a bass clef at the bottom left, a key signature of one flat (Bb) at the top left, and a time signature of 9/8 in the middle. The notes are: a dotted quarter note on the first space (Bb), a dotted quarter note on the second space (C), a dotted quarter note on the second line (D), a dotted quarter note on the second space (E), a dotted quarter note on the third line (F), a dotted quarter note on the third space (G), a dotted quarter note on the fourth line (A), and a dotted quarter note on the fourth space (Bb).

Handwritten musical notation on a five-line staff. The notation consists of seven notes with stems pointing downwards, arranged from right to left. The notes are: a half note on the first line (F#), a quarter note on the second line (G), a quarter note on the second space (A), a quarter note on the first space (F#), a quarter note on the first line (E), a quarter note on the first space (F#), and a quarter note on the first line (F#). A treble clef is written at the bottom of the staff.

Handwritten musical notation on a five-line staff. The notation consists of six notes with stems pointing downwards, arranged from right to left. The notes are: a half note on the first line (F#), a quarter note on the second line (G), a quarter note on the second space (A), a quarter note on the first space (F#), a quarter note on the first line (E), and a quarter note on the first line (F#). A treble clef is written at the bottom of the staff.



A handwritten musical staff with five lines. The notation consists of several notes and accidentals. From left to right: a sharp sign (#) above the staff, a note on the second line with a sharp sign (#) above it, a note on the second space with a sharp sign (#) above it, a note on the second space with a sharp sign (#) above it, a note on the second space with a sharp sign (#) above it, a note on the second space with a sharp sign (#) above it, a note on the second space with a sharp sign (#) above it, and a note on the second space with a sharp sign (#) above it. The staff ends with a double bar line.

A handwritten musical staff with five lines. The notation consists of several notes and accidentals. From left to right: a note on the second space with a sharp sign (#) above it, a note on the second space with a sharp sign (#) above it, a note on the second space with a sharp sign (#) above it, a note on the second space with a sharp sign (#) above it, a note on the second space with a sharp sign (#) above it, a note on the second space with a sharp sign (#) above it, a note on the second space with a sharp sign (#) above it, a note on the second space with a sharp sign (#) above it, and a note on the second space with a sharp sign (#) above it. The staff ends with a double bar line.

Handwritten musical notation on a five-line staff with a treble clef. The notation includes a series of notes with stems and accidentals (flats) and a final fermata-like symbol.

Handwritten musical notation on a five-line staff with a bass clef. The notation includes a series of notes with stems and accidentals (flats) and a final fermata-like symbol.

Handwritten musical notation on a five-line staff. The notation includes a treble clef at the bottom left, a sharp sign (#) on the first line, and several notes and symbols: a note on the first line with a sharp sign, a note on the second line, a note on the second space, a note on the second space with a sharp sign, a note on the second space with the number '15' written above it, and a note on the second space with a sharp sign and a double bar line.

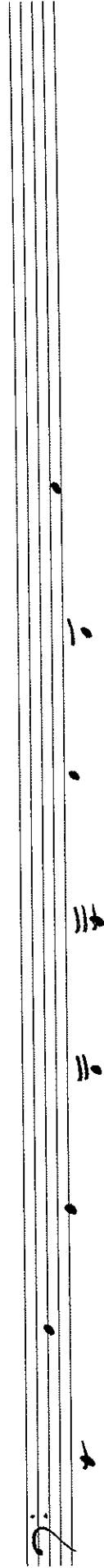
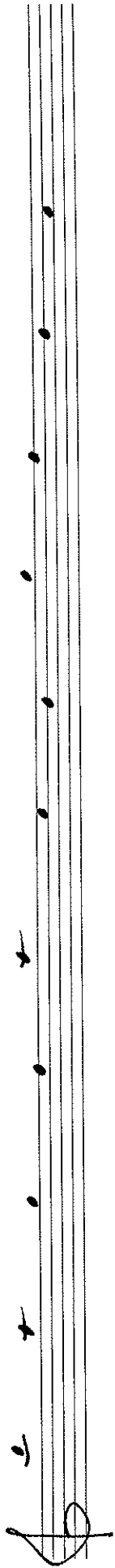
Handwritten musical notation on a five-line staff. The notation includes a treble clef at the bottom left, a sharp sign (#) on the first line, and several notes: a note on the first line, a note on the second line, a note on the second space, a note on the second space, a note on the second space, and a note on the second space with a sharp sign and a double bar line.

Handwritten musical notation on a five-line staff. The notation includes a treble clef at the bottom left. From top to bottom, the notes are: a dotted quarter note with a slur, a quarter note with a slur, a quarter note, a quarter note with a slur, a quarter note, a quarter note, and a quarter note with a slur.

Handwritten musical notation on a five-line staff. The notation includes a treble clef at the bottom left. From top to bottom, the notes are: a quarter note with a slur, a quarter note with a slur, a quarter note with a slur, a quarter note, and a quarter note with a slur.

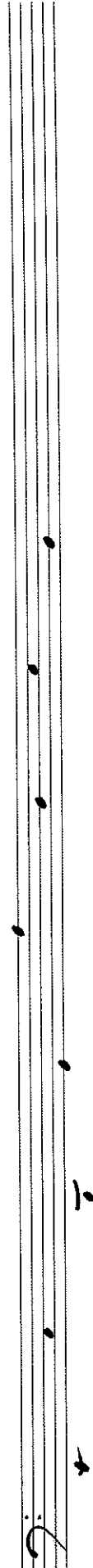
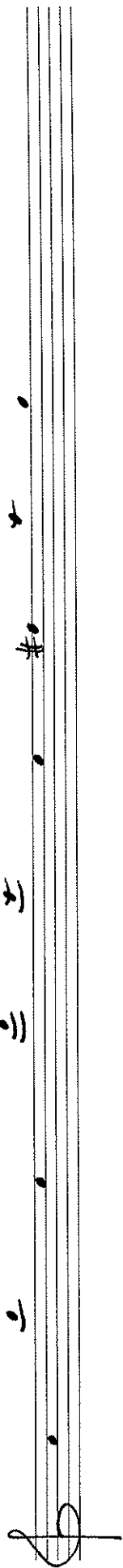
Handwritten musical notation on a five-line staff. It begins with a treble clef and a key signature of two sharps (F# and C#). The notation consists of several notes and rests, with some notes marked with a sharp sign. The notes are: F# (first line), C# (second line), a whole rest, F# (third line), C# (third space), a whole rest, F# (third space), C# (fourth line), a whole rest, F# (fourth space), C# (fifth line), a whole rest, F# (fifth space), C# (above the staff), a whole rest, F# (above the staff), C# (above the staff), a whole rest, F# (above the staff), C# (above the staff).

Handwritten musical notation on a five-line staff. It begins with a bass clef and a key signature of two sharps (F# and C#). The notation consists of several notes and rests, with some notes marked with a sharp sign. The notes are: F# (first space), C# (second space), a whole rest, F# (second space), C# (third space), a whole rest, F# (third space), C# (fourth space), a whole rest, F# (fourth space), C# (fifth space), a whole rest, F# (fifth space), C# (above the staff), a whole rest, F# (above the staff), C# (above the staff).



Handwritten musical notation on a five-line staff. The notation includes various symbols such as '15', 'b', '8', and 'v' with stems and beams, and a sharp sign '#'. The staff begins with a treble clef.

Handwritten musical notation on a five-line staff. The notation includes various symbols such as 'b' and dots with stems, and a sharp sign '#'. The staff begins with a treble clef.



A handwritten musical staff with five lines. It begins with a treble clef. The notation includes several notes: a dotted quarter note on the first line (G4), a quarter note on the second line (A4), a quarter note on the second space (B4), a quarter note on the third line (C5), and a quarter note on the third space (D5). There are also some handwritten annotations: a sharp sign (#) above the second line, a flat sign (b) above the first space, and a circled sharp sign (#) above the second space. A double bar line is present after the first two notes.

A handwritten musical staff with five lines. It begins with a treble clef. The notation includes several notes: a dotted quarter note on the first line (G4), a quarter note on the second line (A4), a quarter note on the second space (B4), a quarter note on the third line (C5), and a quarter note on the third space (D5). There are also some handwritten annotations: a flat sign (b) above the first space, and a sharp sign (#) above the second space. A double bar line is present after the first two notes.

A five-line musical staff with handwritten notation. From left to right, the notes are: a treble clef, a quarter note on the first line (F4), a quarter note on the second line (G4), a quarter note on the second space (A4), a quarter note on the third line (B4), a quarter note on the third space (C5), a quarter note on the fourth line (D5), a quarter note on the fourth space (E5), and a quarter note on the fifth line (F5). Above the staff, there are handwritten annotations: a double bar line with a vertical line through it above the first line, a double bar line with a vertical line through it above the second line, a double bar line with a vertical line through it above the third line, a double bar line with a vertical line through it above the fourth line, and a double bar line with a vertical line through it above the fifth line.

A five-line musical staff with handwritten notation. From left to right, the notes are: a treble clef, a quarter note on the first line (F4), a quarter note on the second line (G4), a quarter note on the second space (A4), a quarter note on the third line (B4), a quarter note on the third space (C5), a quarter note on the fourth line (D5), a quarter note on the fourth space (E5), and a quarter note on the fifth line (F5). Above the staff, there are handwritten annotations: a double bar line with a vertical line through it above the first line, a double bar line with a vertical line through it above the second line, a double bar line with a vertical line through it above the third line, a double bar line with a vertical line through it above the fourth line, and a double bar line with a vertical line through it above the fifth line.

A handwritten musical staff with a treble clef. The notation includes a sharp sign (#) on the first line, a double bar line, a sharp sign (#) on the second line, a sharp sign (#) on the third line, a sharp sign (#) on the fourth line, and a sharp sign (#) on the fifth line. There are also several dots and a small 'v' mark scattered across the staff.

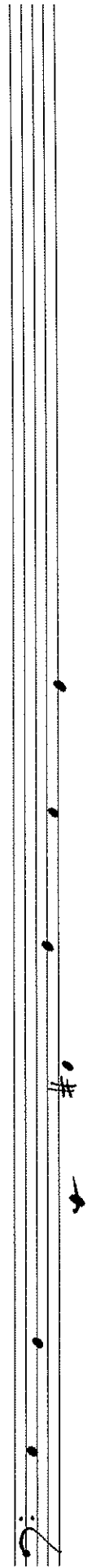
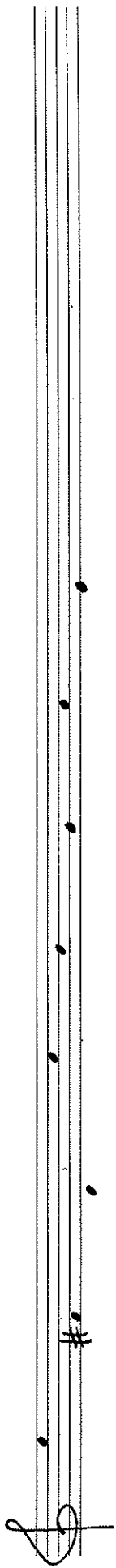
A handwritten musical staff with a bass clef. The notation includes a sharp sign (#) on the first line, a sharp sign (#) on the second line, a sharp sign (#) on the third line, a sharp sign (#) on the fourth line, and a sharp sign (#) on the fifth line. There are also several dots and a small 'v' mark scattered across the staff.

Handwritten musical notation on a five-line staff. The notation includes a treble clef at the bottom left, a key signature of one sharp (F#) at the top left, and a series of notes: a dotted quarter note on the first line (F#), a quarter note on the second line (G), a quarter note on the second space (A), a quarter note on the second space (A), a quarter note on the second space (A), a quarter note on the second space (A), a quarter note on the second space (A), a quarter note on the second space (A), a quarter note on the second space (A), and a quarter note on the second space (A). The staff ends with a double bar line.

Handwritten musical notation on a five-line staff. The notation includes a treble clef at the bottom left, a key signature of one sharp (F#) at the top left, and a series of notes: a dotted quarter note on the first line (F#), a quarter note on the second line (G), a quarter note on the second space (A), a quarter note on the second space (A), a quarter note on the second space (A), a quarter note on the second space (A), a quarter note on the second space (A), a quarter note on the second space (A), a quarter note on the second space (A), and a quarter note on the second space (A). The staff ends with a double bar line.

Handwritten musical notation on a five-line staff with a treble clef. The notation includes a key signature of one sharp (F#), a series of notes, and a fermata over a note.

Handwritten musical notation on a five-line staff with a bass clef. The notation includes a key signature of one sharp (F#), a series of notes, and a fermata over a note.



Handwritten musical notation on a five-line staff. It begins with a treble clef and a common time signature 'C'. The notation consists of a series of nine dots placed on the lines and spaces of the staff, starting from the first space and moving upwards. A handwritten 'b' is positioned below the staff near the end of the sequence.

Handwritten musical notation on a five-line staff. It begins with a treble clef and a common time signature 'C'. The notation consists of a series of nine dots placed on the lines and spaces of the staff, starting from the first space and moving upwards. A handwritten 'b' is positioned below the staff near the end of the sequence.

A single staff of handwritten musical notation. The staff is oriented vertically. It begins with a treble clef at the bottom. The notation consists of several notes and accidentals: a flat (b) on the first line, a flat (b) on the second line, a flat (b) on the third line, a flat (b) on the fourth line, and a flat (b) on the fifth line. There are also several dots placed on the lines and spaces between them, and a few small, illegible markings.

A single staff of handwritten musical notation. The staff is oriented vertically. It begins with a treble clef at the bottom. The notation consists of several notes and accidentals: a flat (b) on the first line, a flat (b) on the second line, a flat (b) on the third line, a flat (b) on the fourth line, and a flat (b) on the fifth line. There are also several dots placed on the lines and spaces between them, and a few small, illegible markings.

Handwritten musical notation on a five-line staff. The notation consists of several groups of notes, each with a sharp sign (#) and a stem. The notes are arranged in a sequence from left to right. The first group has a stem pointing up and a sharp sign below the staff. The second group has a stem pointing down and a sharp sign below the staff. The third group has a stem pointing up and a sharp sign below the staff. The fourth group has a stem pointing down and a sharp sign below the staff. The fifth group has a stem pointing up and a sharp sign below the staff. The sixth group has a stem pointing down and a sharp sign below the staff. The seventh group has a stem pointing up and a sharp sign below the staff. The eighth group has a stem pointing down and a sharp sign below the staff. The ninth group has a stem pointing up and a sharp sign below the staff. The tenth group has a stem pointing down and a sharp sign below the staff. The eleventh group has a stem pointing up and a sharp sign below the staff. The twelfth group has a stem pointing down and a sharp sign below the staff. The notation ends with a double bar line and a fermata-like symbol.

Handwritten musical notation on a five-line staff. The notation consists of several groups of notes, each with a sharp sign (#) and a stem. The notes are arranged in a sequence from left to right. The first group has a stem pointing up and a sharp sign below the staff. The second group has a stem pointing down and a sharp sign below the staff. The third group has a stem pointing up and a sharp sign below the staff. The fourth group has a stem pointing down and a sharp sign below the staff. The fifth group has a stem pointing up and a sharp sign below the staff. The sixth group has a stem pointing down and a sharp sign below the staff. The seventh group has a stem pointing up and a sharp sign below the staff. The eighth group has a stem pointing down and a sharp sign below the staff. The notation ends with a double bar line and a fermata-like symbol.

Handwritten musical notation on a five-line staff. The notation includes a treble clef at the bottom. Above the staff, there are handwritten symbols: a sharp sign followed by a double bar line, a sharp sign followed by a double bar line, a sharp sign, a natural sign, a sharp sign, a sharp sign, a sharp sign, a sharp sign, a sharp sign, and a sharp sign.

Handwritten musical notation on a five-line staff. The notation includes a treble clef at the bottom. Above the staff, there are handwritten symbols: a sharp sign, a natural sign, a sharp sign, a sharp sign, a sharp sign, and a sharp sign.

Handwritten musical notation on a five-line staff. The notation includes a treble clef, a series of notes, and a measure with a double bar line and the number '29' written below it.

Handwritten musical notation on a five-line staff. The notation includes a treble clef, a series of notes, and a measure with a double bar line and the number '29' written below it.

A handwritten musical staff with five lines. At the bottom left is a treble clef. The notation includes a sharp sign (#) on the first line, followed by a double bar line. Above the staff, there are several notes and symbols: a double bar line, a note on the second line, a note on the first space, a note on the second space, a note on the third line, a note on the second space, a note on the first space, a note on the second line, and a note on the first space. There are also some vertical lines and symbols above the staff, possibly indicating fingerings or accents.

A handwritten musical staff with five lines. At the bottom left is a treble clef. The notation includes a double bar line, followed by a note on the second line, a note on the first space, a note on the second space, a note on the third line, a note on the second space, a note on the first space, a note on the second line, and a note on the first space. There are also some vertical lines and symbols above the staff, possibly indicating fingerings or accents.

Handwritten musical notation on a five-line staff. The notation includes a series of notes, some with stems, and rests. There are several sharp symbols (#) and a double bar line. The staff concludes with a treble clef.

Handwritten musical notation on a five-line staff. The notation includes a series of notes, some with stems, and rests. There are several sharp symbols (#) and a double bar line. The staff concludes with a treble clef.

Handwritten musical notation on a five-line staff. The notation includes a treble clef at the bottom left, a key signature of one sharp (F#), and a 4/4 time signature. The melody consists of several notes, some with stems and beams, and rests. Above the staff, there are handwritten annotations including the number '8' and various symbols like '≡', '≡', and '≡'.

Handwritten musical notation on a five-line staff. The notation includes a treble clef at the bottom left, a key signature of one sharp (F#), and a 4/4 time signature. The melody consists of several notes, some with stems and beams, and rests. Above the staff, there are handwritten annotations including the number '5' and various symbols like '≡', '≡', and '≡'.

Handwritten musical notation on a five-line staff. The notation includes a treble clef, a key signature of one sharp (F#), and a sequence of notes: G4, A4, B4, C5, D5, E5, F#5, G5, A5, B5, C6, D6, E6, F#6, G6, A6, B6, C7. The notes are written with stems and flags, and some have sharp signs above them.

Handwritten musical notation on a five-line staff. The notation includes a treble clef, a key signature of one sharp (F#), and a sequence of notes: G4, A4, B4, C5, D5, E5, F#5, G5, A5, B5, C6, D6, E6, F#6, G6, A6, B6, C7. The notes are written with stems and flags, and some have sharp signs above them.

A handwritten musical staff with five lines. The notation includes a treble clef at the bottom left. The notes and symbols are as follows from left to right: a sharp sign (#) on the first line, a flat sign (b) on the second line, a flat sign (b) on the third line, a sharp sign (#) on the fourth line, a sharp sign (#) on the fifth line, a dot on the first line, a dot on the second line, a dot on the third line, a dot on the fourth line, a dot on the fifth line, and a sharp sign (#) on the first line.

A handwritten musical staff with five lines. The notation includes a treble clef at the bottom left. The notes and symbols are as follows from left to right: a sharp sign (#) on the first line, a sharp sign (#) on the second line, a sharp sign (#) on the third line, a sharp sign (#) on the fourth line, a sharp sign (#) on the fifth line, a sharp sign (#) on the first line, a sharp sign (#) on the second line, a sharp sign (#) on the third line, a sharp sign (#) on the fourth line, a sharp sign (#) on the fifth line, and a sharp sign (#) on the first line.

