

**yosemite**  
sinfonische skizzen für ensemble  
symphonic sketches for ensemble

eva-maria houben

2007

yosemite

sinfonische skizzen für ensemble

symphonic sketches for ensemble

eva-maria houben

2007

in memoriam john muir.

besetzung

flöte

saxophon in B (transponierend notiert)

klarinetten in B (transponierend notiert)

posaune

vibraphon

pauke

große trommel

becken

violine 1

violine 2

viola

violoncello

kontrabass

zusammenklänge  
aus drei tönen,  
aus zwei tönen –  
und einzelklänge

einige zusammenklänge und einzelklänge sind sehr lang:

---

sie dauern bis zu 30 sekunden und auch länger (bogenwechsel nahezu unmerklich).

einige sind lang: \_\_\_\_\_

sie sind auf einer langen ruhigen ausatmung, auf einem langen ruhigen bogenstrich zu spielen.

zusammenklänge und einzelklänge folgen und überlappen einander.

die einsätze bei drei- und zweitonklängen wie auch bei überlappungen von einzelklängen bzw. von einem einzelklang und einem zwei- oder dreitonklang dürfen unscharf sein. die instrumente setzen so ein, dass ihre klänge sich überschneiden; einer beginnt zu spielen, die anderen folgen.

es wird ohne stoppuhr gespielt.

zwischen den klängen bleibt es immer ein wenig still.

sich zeit lassen. genügend zeit zum atemholen, zum neuen ansatz.

alle klänge sind sehr leise.

bei zusammenklängen so spielen, dass kein instrument hervortritt.

instrumentation

flute

saxophone in B flat (transposing notation)

clarinet in B flat (transposing notation)

trombone

vibes

timbal

bass drum

cymbals

violin 1

violin 2

viola

violoncello

double bass

three-tone sounds – two-tone sounds – and single tones.

some of them are very long:

---

duration: up to 30 seconds and even longer (changes of the bow nearly imperceptible).

some are long: \_\_\_\_\_

one long quiet breath, one quiet bow.

sounds follow each other and overlap.

the entries of three- or two-tone sounds and of single sounds may be vague. the instruments enter in such a way that the sounds overlap; one player begins, the other player/players follow. play without stop-watch.

silence between the sounds.

take up time.

time enough to breath, to enter again.

all sounds are very soft.

no instrument emerges.

I

sequoiadendron giganteum  
immergrünes im feuer

II

trockene kaskaden  
ahnen das frühjahr

III

baum und stein  
das genügt

IV

die wiese im zwielicht  
abendmahlzeit für den kojoten

V

licht und schatten  
wie auf einem bild  
gleich wird es dunkel

# I

Handwritten musical score for three staves. The top staff is labeled "violine 1" and contains a treble clef, a key signature of one sharp (F#), and a common time signature (C). The middle staff is labeled "violine 2" and contains a treble clef, a key signature of one sharp (F#), and a common time signature (C). The bottom staff is labeled "viola" and contains a bass clef, a key signature of one sharp (F#), and a common time signature (C). Each staff has a horizontal line drawn across it, with a diamond-shaped symbol and a sharp sign (#) positioned above the line.

Handwritten musical notation for a percussion part. The word "panke" is written above the staff. The staff begins with a 7/8 time signature. There are two measures, each containing a horizontal line with a diamond-shaped symbol above it, representing a drum hit. Wavy lines above the staff indicate the sound of the drum.



Handwritten musical notation for three staves. The top staff is labeled "violine 1", the middle "violine 2", and the bottom "viola". Each staff begins with a treble clef (for violins) or a bass clef (for viola). The notation consists of two measures. In the first measure, each instrument has a whole note chord consisting of a sharp sign, a diamond symbol, and a dot. In the second measure, the same chord is repeated. The notes are positioned on the first line of each staff.

posaune  
m. dpf.

Handwritten musical notation for a tuba part. It features a bass clef and a whole note chord in the first measure, consisting of a sharp sign, a diamond symbol, and a dot. The second measure is empty.

Violine 1

Violine 2

viola

flöte

Klarinette

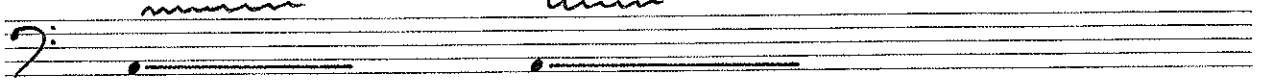
Saxophon

pauke

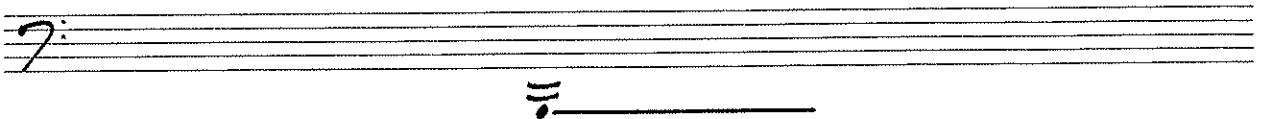
posaune  
m. dpf.



pauke  
mmmm



Kontrabass



Violine 1  
Violine 2  
viola

This block contains three staves of handwritten musical notation. The top staff is labeled 'Violine 1' and features a treble clef, a key signature of two sharps (F# and C#), and a common time signature. The middle staff is labeled 'Violine 2' and has the same notation. The bottom staff is labeled 'viola' and features a bass clef with a '3' below it, indicating a 3/4 time signature. Each staff contains a single note on a horizontal line, with a diamond-shaped symbol above it.

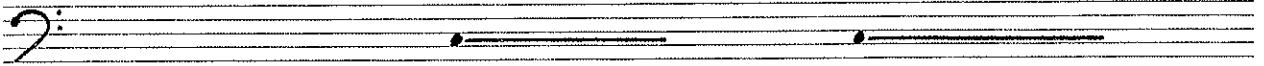
flöte  
Klarinette  
Saxophon

This block contains three staves of handwritten musical notation. Each staff has a treble clef. The top staff is labeled 'flöte', the middle 'Klarinette', and the bottom 'Saxophon'. Each staff contains a single note on a horizontal line, with a diamond-shaped symbol above it.

Kontrabass

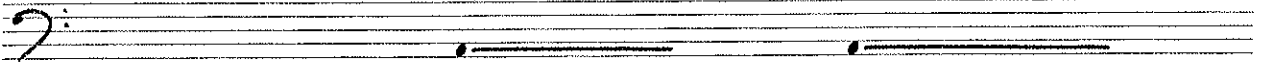
This block contains one staff of handwritten musical notation with a bass clef. The staff is labeled 'Kontrabass' and contains two notes on horizontal lines, each with a diamond-shaped symbol above it.

posaune  
m. dpf.

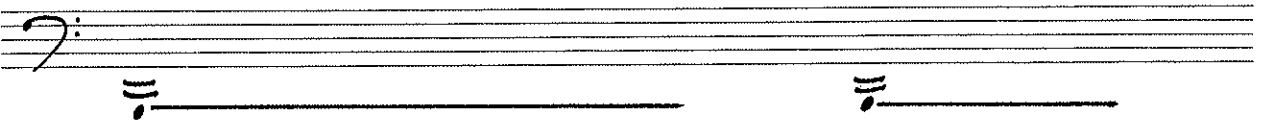


pauke  
mm

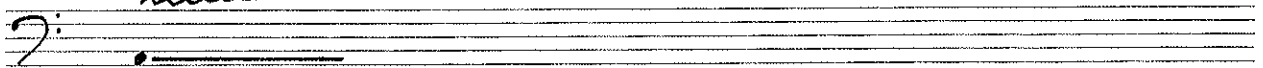
mm



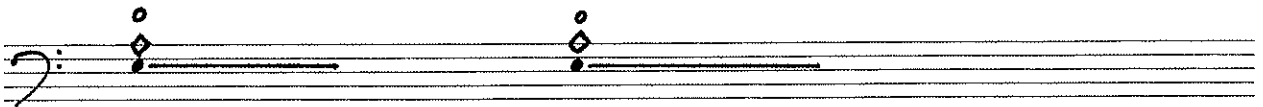
kontra bass



pauke  
mm



Violoncello



sequoiadendron giganteum  
immergrünes im fues

II

violine 1

becken  
mit Stäbchen gestr.

Handwritten musical notation for three string instruments. The notation is on three staves, each with a treble clef. The first staff is labeled "violine 1", the second "violine 2", and the third "viola". Each staff contains a single note on the first line of the staff, with a horizontal line extending to the right, indicating a sustained note.

becken  
mit stäbchen gestr.

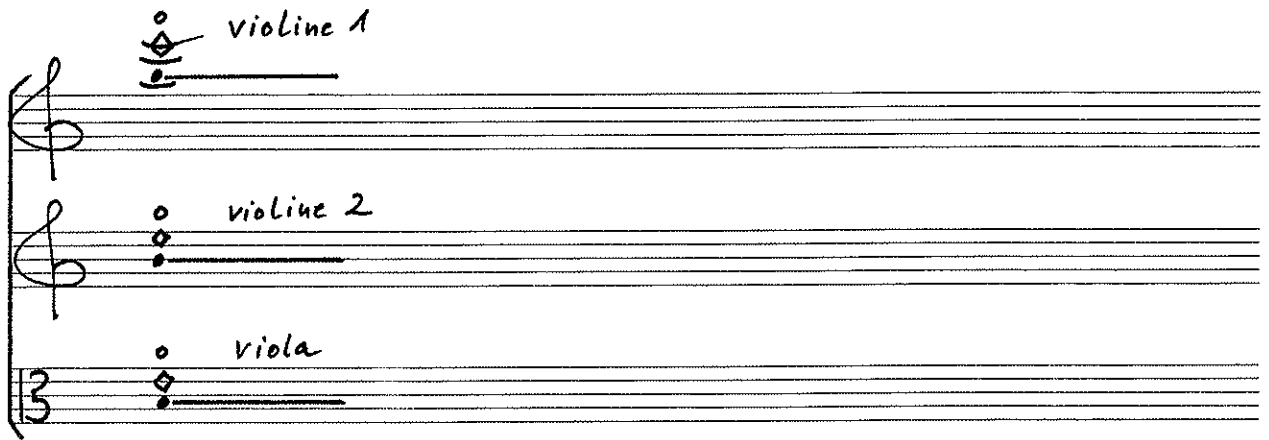
Handwritten musical notation for a cymbal. The notation is on a single staff with a treble clef. It contains three notes on the first line of the staff, each with a horizontal line extending to the right, indicating a sustained note.



violine 1

violine 2

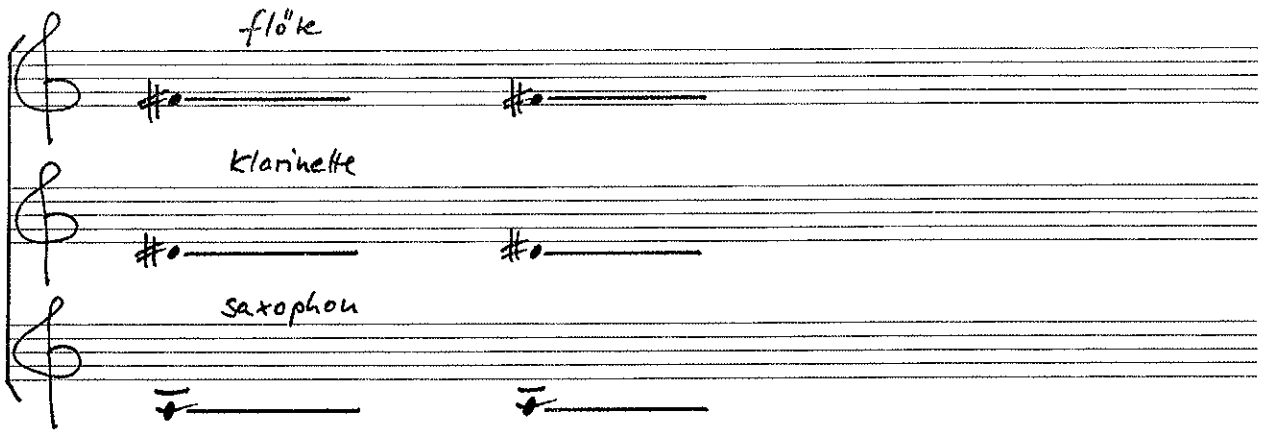
viola



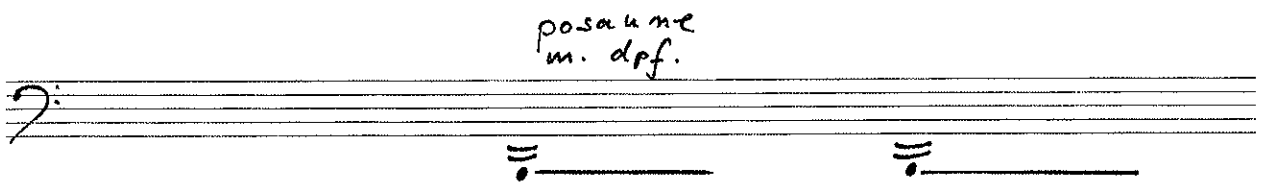
flöte

klarinette

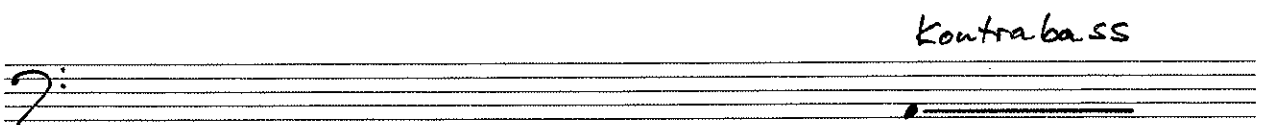
saxophon



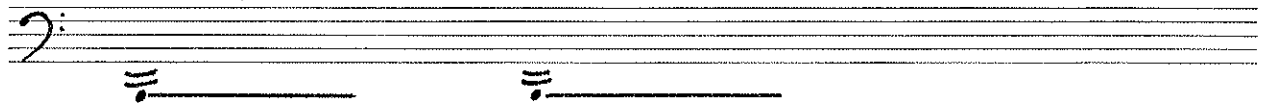
posaune  
m. dpf.



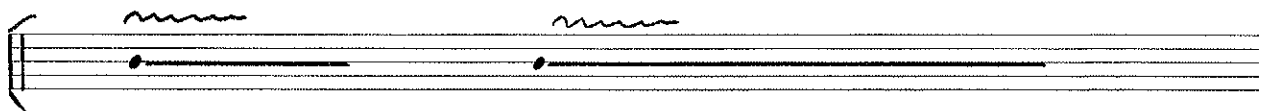
Kontrabaß



posaune  
m. dpf.



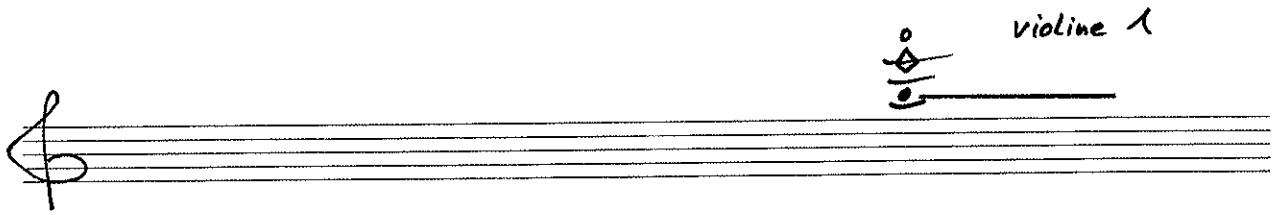
große trommel



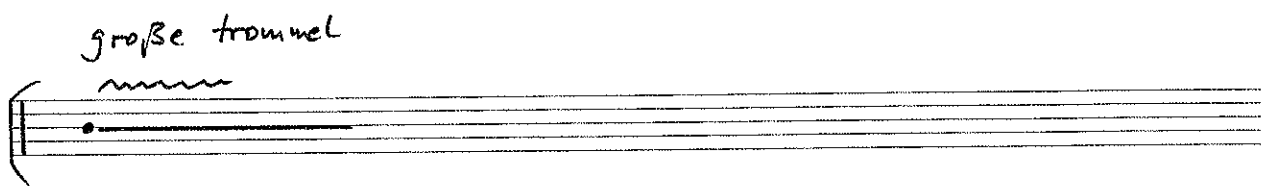
Kontrabass



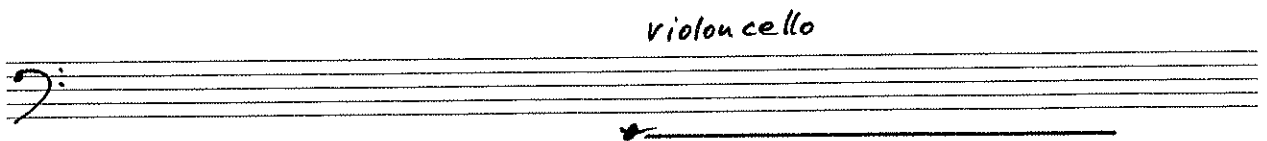
violine 1



große trommel

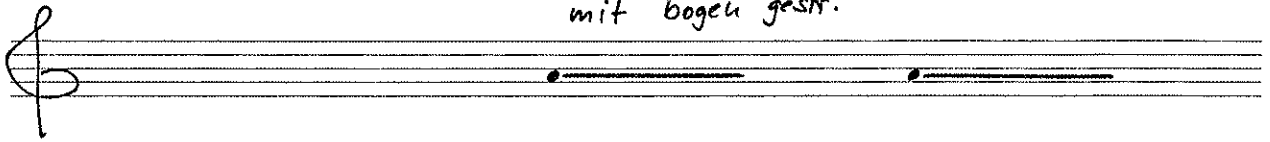


violoncello

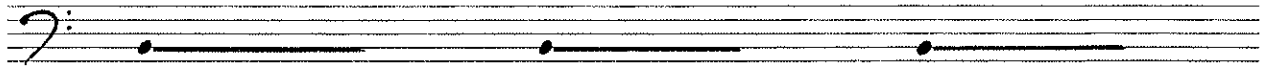


III

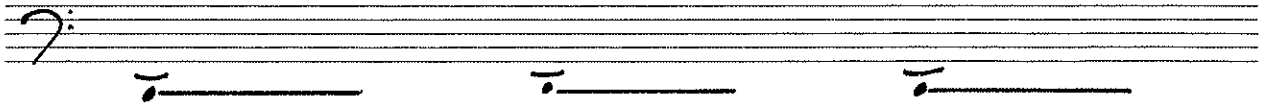
vibraphon  
mit bogen gestr.



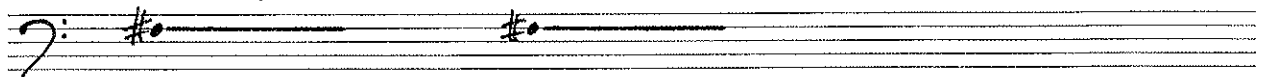
violoncello



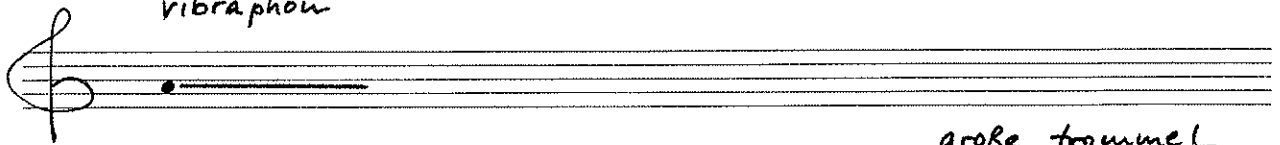
Kontrabass



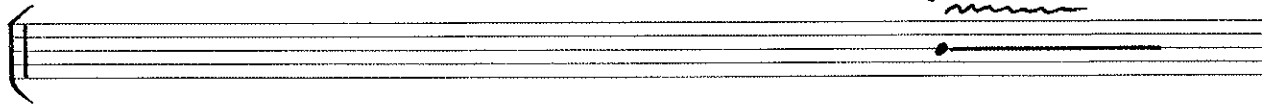
posaune  
m. dpf.



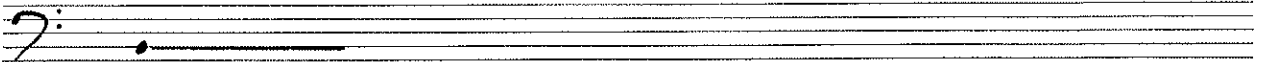
vibraphon



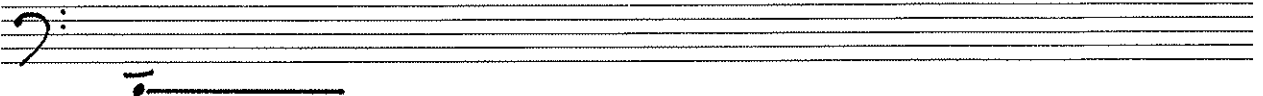
große trommel



violoncello



Kontrabass



violine 1  
# *trem. mit der bogenspitze*

violine 2  
# *trem. mit der bogenspitze*

viola  
# *trem. mit der bogenspitze*

posaune  
m. dpf.

große trommel  
uuuu

flöte

klarinette

saxophon

Handwritten musical notation for three instruments: flöte, klarinette, and saxophon. Each instrument is represented by a five-line staff with a treble clef. The flöte staff has two horizontal lines with dots at their starting points. The klarinette staff has two horizontal lines with dots and a flat symbol (b) at their starting points. The saxophon staff has two horizontal lines with dots at their starting points.

violoncello

Handwritten musical notation for a violoncello. It consists of a five-line staff with a bass clef. A single horizontal line with a dot at its starting point is drawn across the staff.

flöte

klarinette

saxophon

große trommel

violoncello



IV

Handwritten musical score for Violine 1, Violine 2, and Viola. The score is written on three staves. The top staff is labeled "Violine 1", the middle staff "Violine 2", and the bottom staff "Viola". Each staff begins with a treble clef and a key signature of one sharp (F#). The music consists of four measures. In each measure, the Violine 1 and Violine 2 staves have a half note chord consisting of F#4, A4, and C#5. The Viola staff has a half note chord consisting of F#3, A3, and C#4. The bottom staff has a 3/4 time signature.

Handwritten musical score for Flöte and Klarinette. The score is written on two staves. The top staff is labeled "flöte" and the bottom staff "Klarinette". Both staves begin with a treble clef and a key signature of one sharp (F#). The music consists of two measures. In the first measure, the Flöte staff has a half note chord consisting of F#4, A4, and C#5, and the Klarinette staff has a half note chord consisting of F#3, A3, and C#4. In the second measure, both staves have a whole rest.

flöte

klarinete

saxophon

Detailed description: This block contains three staves of handwritten musical notation. The top staff is labeled 'flöte' and shows two notes on a treble clef staff. The middle staff is labeled 'klarinete' and shows two notes on a treble clef staff. The bottom staff is labeled 'saxophon' and shows two notes on a treble clef staff. All notes are connected to a horizontal line below them, indicating sustained notes.

violoncello

Detailed description: This block contains one staff of handwritten musical notation for the violoncello. The staff is on a bass clef. A single note is written on the staff, connected to a horizontal line below it. The label 'violoncello' is written above the staff.

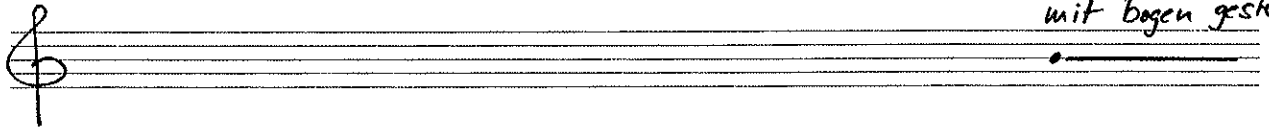
Kontrabass

Detailed description: This block contains one staff of handwritten musical notation for the Kontrabass. The staff is on a bass clef. Three notes are written on the staff, each connected to a horizontal line below it. The label 'Kontrabass' is written above the staff.

posaune  
m. dpf.



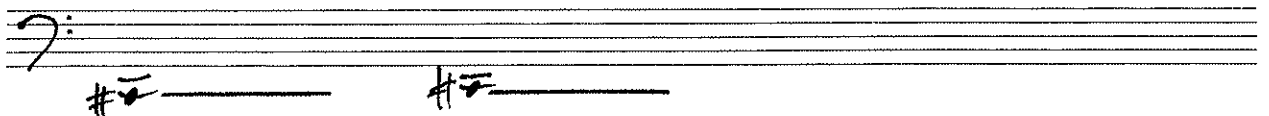
vibraphon  
mit bogen gestr.



Violoncello



Kontrabass



die wiese im zwielicht  
abendmahlzeit  
für den kojoten

V

Klarinette

Saxophon

Kontrabass

1

Handwritten musical score for Violine 1, Violine 2, and Viola. The score is written on three staves. The top staff is labeled "violine 1" and has a treble clef with a sharp sign (#) above the first line. The middle staff is labeled "violine 2" and has a treble clef. The bottom staff is labeled "viola" and has a treble clef. Each staff contains a single note on the first line, connected to a second note on the first line by a horizontal line, indicating a sustained note. The notes are on the first line of the treble clef, which is G4.

Handwritten musical score for Pauke (Tympani). The score is written on a single staff with a bass clef. The word "pauke" is written above the staff. There are two notes on the first line, each connected to a second note on the first line by a horizontal line, indicating a sustained note. The notes are on the first line of the bass clef, which is G2. Above each note is a wavy line representing a tremolo or roll.

Handwritten musical score for Kontrabass (Double Bass). The score is written on a single staff with a bass clef. The word "Kontrabass" is written above the staff. There are two notes on the first line, each connected to a second note on the first line by a horizontal line, indicating a sustained note. The notes are on the first line of the bass clef, which is G2.

flöte

klarinette

saxophon

This block contains three staves of handwritten musical notation. The top staff is labeled 'flöte' and features a treble clef with a sharp sign (#) and a horizontal line. The middle staff is labeled 'klarinette' and features a treble clef with a flat sign (b) and a horizontal line. The bottom staff is labeled 'saxophon' and features a treble clef with a flat sign (b) and a horizontal line. All three staves have a vertical line on the left side, suggesting they are part of a larger score.

pauke

mm

This block contains a single staff of handwritten musical notation for a snare drum. It features a bass clef and two horizontal lines with a dot above each, representing snare drum notation. The word 'pauke' is written above the first line, and 'mm' is written above the second line.

Kontrabass

This block contains a single staff of handwritten musical notation for a double bass. It features a bass clef and two horizontal lines with a double bar underneath each, representing double bass notation.

klarinette

saxophon

posaune  
m. dpf.

panne

kontrabass

violine 1

violine 2

viola

posaune  
m. dpf.

pauke

Kontrabass

licht und schatten  
wie auf einem bild  
gleich wird es dunkel