

klang-landschaften
für einen pianisten / eine pianistin
landscapes of sounds
for one pianist

eva-maria houben

2008

klang-landschaften
für einen pianisten / eine pianistin
landscapes of sounds
for one pianist

eva-maria houben
2008

für istván zelenka.

in einer landschaft geht man spazieren.

„klang-landschaften“: man spaziert zwischen den klängen.

der abstand zwischen den klängen entspricht in etwa den zeitlichen proportionen.

unangestrengt leise – durchweg zart und leicht.

das rechte pedal bleibt während der aufführung niedergedrückt.

in a landscape you go for a walk.

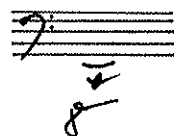
“landscapes of sounds”: you stroll between the sounds, you stroll from sound to sound.

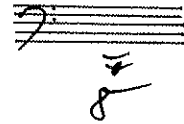
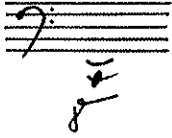
the space between the sounds may roughly indicate the tempo.

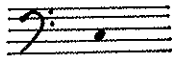
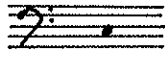
But on the whole the tempo is free, you may change at any time.

play softly – without any effort; all the time gently, tenderly.

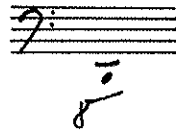
keep the right pedal down during the whole performance.











Handwritten musical notation on a grand staff. The treble clef staff contains a whole note chord with notes G4 and Bb4. The bass clef staff contains a whole note chord with notes G3 and Bb3. The label "be" is written between the staves.

Handwritten musical notation on a single staff with a bass clef. It shows a whole note chord with notes G2 and Bb2. The label "be" is written below the staff.

Handwritten musical notation on a single staff with a treble clef. It shows a whole note chord with notes G4 and Bb4. The label "be" is written below the staff.

Handwritten musical notation on a grand staff. The treble clef staff contains a whole note chord with notes G4 and Bb4. The bass clef staff contains a whole note chord with notes G3 and Bb3. The label "be" is written between the staves.

Handwritten musical notation on a single staff with a bass clef. It shows a whole note chord with notes G2 and Bb2. The label "be" is written below the staff.

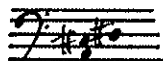
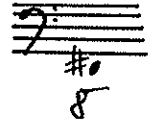
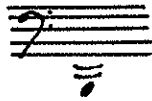
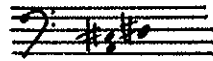
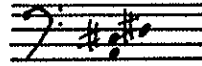
Handwritten musical notation on a single staff with a treble clef. It shows a whole note chord with notes G4 and Bb4. The label "be" is written below the staff.

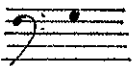
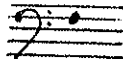
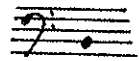
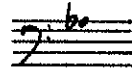
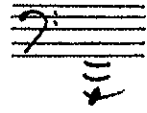
Handwritten musical notation on a single staff with a treble clef. It shows a whole note chord with notes G4 and Bb4. The label "15" is written above the staff and "be" is written below it.

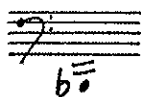
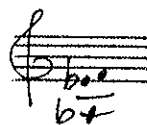
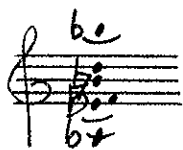
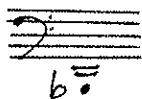
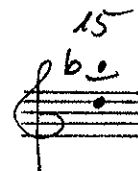
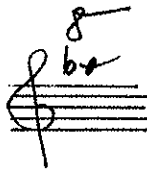
Handwritten musical notation on a single staff with a bass clef. It shows a whole note chord with notes G2 and Bb2. The label "be" is written below the staff.

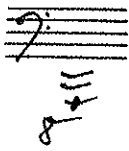
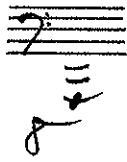
Handwritten musical notation on a single staff with a bass clef. It shows a whole note chord with notes G2 and Bb2. The label "be" is written below the staff.

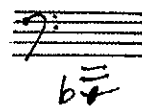
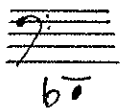
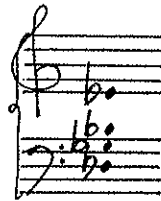
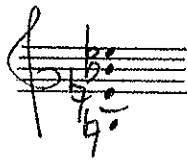
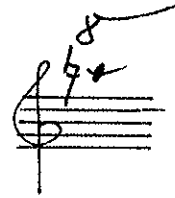
Handwritten musical notation on a single staff with a treble clef. It shows a whole note chord with notes G4 and Bb4. The label "15" is written above the staff and "be" is written below it.

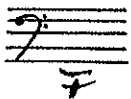
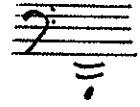


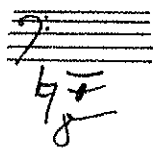
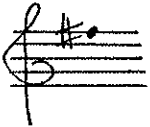
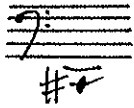


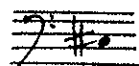
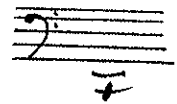
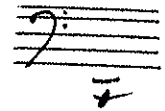
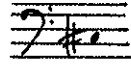


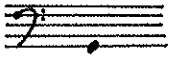
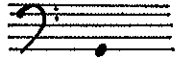


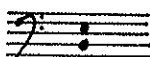
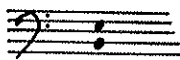


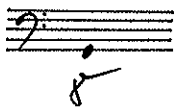
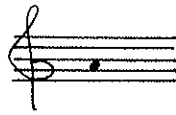
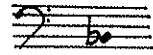
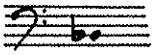
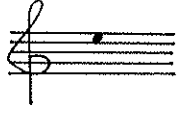


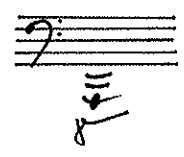
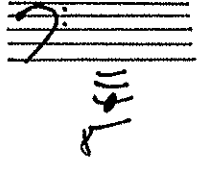


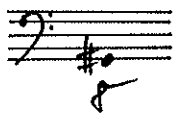


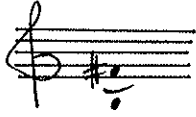
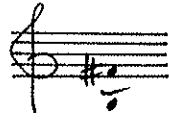


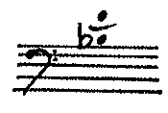
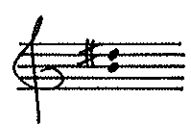
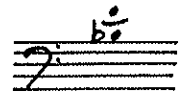


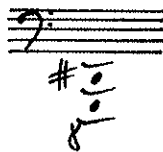
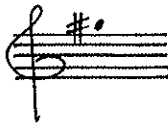
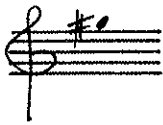
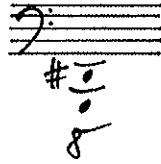
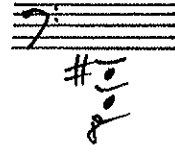


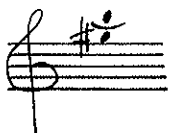
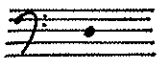
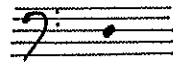


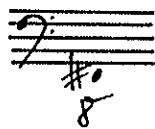


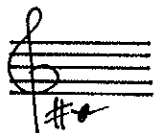
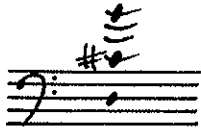


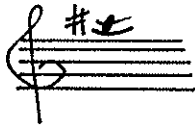
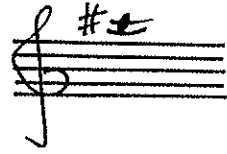


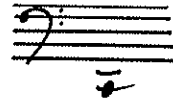
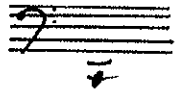


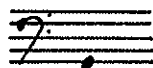
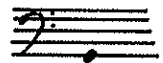
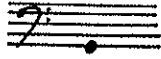
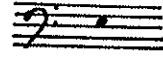
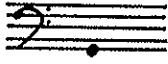


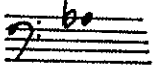




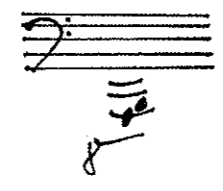
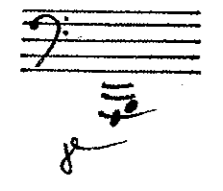
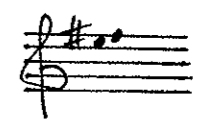
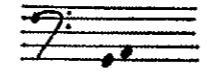




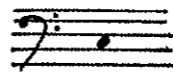
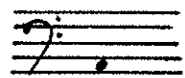
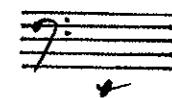
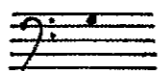
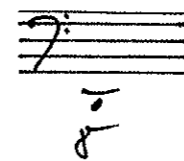
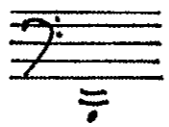
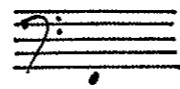


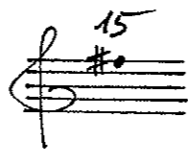
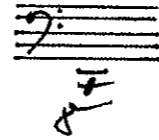
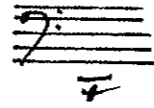


X



X





Handwritten musical notation on three staves. The top staff has a treble clef and a key signature of one flat (Bb). The middle staff has a treble clef and a sharp sign (#). The bottom staff has a bass clef and a double bar line with a flat sign (b) below it.

Handwritten musical notation on three staves. The top staff has a treble clef and a key signature of one flat (Bb). The middle staff has a treble clef and a sharp sign (#). The bottom staff has a bass clef and a double bar line with a flat sign (b) below it.

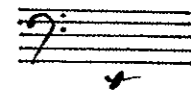
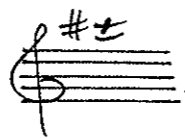
Handwritten musical notation on three staves. The top staff has a treble clef and a key signature of one flat (Bb). The middle staff has a treble clef and a sharp sign (#). The bottom staff has a bass clef and a double bar line with a sharp sign (#) below it.

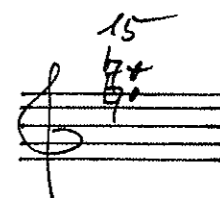
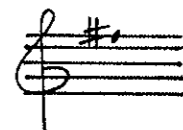
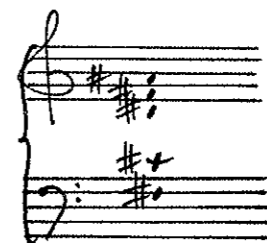
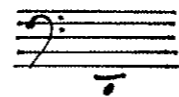
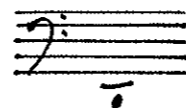
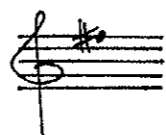
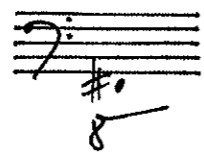
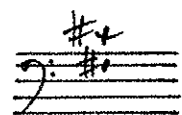
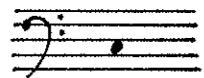
Handwritten musical notation on three staves. The top staff has a treble clef and a key signature of one flat (Bb). The middle staff has a treble clef and a sharp sign (#). The bottom staff has a bass clef and a double bar line with a sharp sign (#) below it.

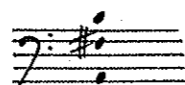
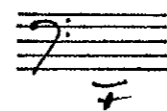
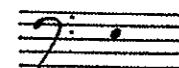
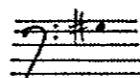
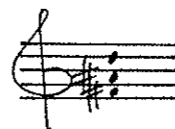
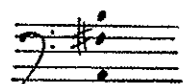
Handwritten musical notation on three staves. The top staff has a treble clef and a key signature of one flat (Bb). The middle staff has a treble clef and a sharp sign (#). The bottom staff has a bass clef and a double bar line with a sharp sign (#) below it.

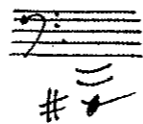
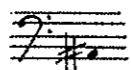
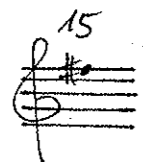
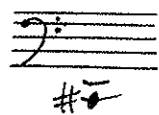
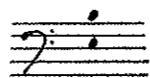
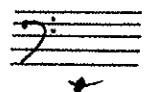
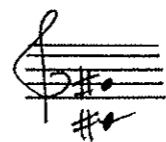
Handwritten musical notation on three staves. The top staff has a treble clef and a sharp sign (#). The middle staff has a treble clef and a sharp sign (#). The bottom staff has a bass clef and a double bar line with a sharp sign (#) below it.

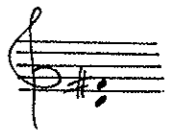
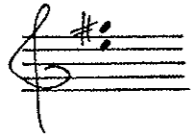
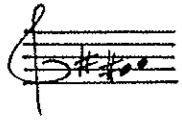
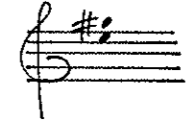
Handwritten musical notation on three staves. The top staff has a treble clef and a key signature of one flat (Bb). The middle staff has a treble clef and a sharp sign (#). The bottom staff has a bass clef and a double bar line with a sharp sign (#) below it.











Handwritten musical notation on a grand staff. The treble clef staff contains a sharp sign (#) above a fermata symbol. The bass clef staff contains a sharp sign (#) above a fermata symbol.

Handwritten musical notation on a grand staff. The treble clef staff contains a sharp sign (#) above a fermata symbol. The bass clef staff contains a sharp sign (#) above a fermata symbol.

Handwritten musical notation on a grand staff. The treble clef staff contains a sharp sign (#) above a fermata symbol. The bass clef staff contains a sharp sign (#) above a fermata symbol.

Handwritten musical notation on a grand staff. The treble clef staff contains a sharp sign (#) above a fermata symbol. The bass clef staff contains a sharp sign (#) above a fermata symbol.

Handwritten musical notation on a grand staff. The treble clef staff contains a sharp sign (#) above a fermata symbol. The bass clef staff contains a sharp sign (#) above a fermata symbol.

Handwritten musical notation on a grand staff. The treble clef staff contains a sharp sign (#) above a fermata symbol. The bass clef staff contains a sharp sign (#) above a fermata symbol.

Handwritten musical notation on a grand staff. The treble and bass clefs are present. The key signature is one sharp (F#). The notation consists of several notes in both staves. Below the staff, there is a handwritten sharp sign (#) and a stylized symbol resembling a lowercase 'g'.

Handwritten musical notation on a grand staff. The treble and bass clefs are present. The key signature is one sharp (F#). The notation consists of several notes in both staves. Above the staff, there is a handwritten sharp sign (#) and a stylized symbol resembling a lowercase 'g'.

Handwritten musical notation on a grand staff. The treble and bass clefs are present. The key signature is one sharp (F#). The notation consists of several notes in both staves. Below the staff, there is a handwritten sharp sign (#) and a stylized symbol resembling a lowercase 'g'.

Handwritten musical notation on a grand staff. The treble and bass clefs are present. The key signature is one sharp (F#). The notation consists of several notes in both staves. Above the staff, the number '15' is written, followed by a stylized symbol resembling a lowercase 'g'.

Handwritten musical notation on a grand staff. The treble and bass clefs are present. The key signature is one sharp (F#). The notation consists of several notes in both staves. Below the staff, there is a handwritten sharp sign (#) and a stylized symbol resembling a lowercase 'g'.

Handwritten musical notation on a grand staff. The treble and bass clefs are present. The key signature is one sharp (F#). The notation consists of several notes in both staves. Above the staff, there is a handwritten sharp sign (#) and a stylized symbol resembling a lowercase 'g'.

Handwritten musical notation on a grand staff. The treble clef staff contains a whole note chord with notes F#4, A#4, and C#5. The bass clef staff contains a whole note chord with notes F#2, A#2, and C#3. A fermata is placed above the treble clef staff.

Handwritten musical notation on a grand staff. The treble clef staff contains a whole note chord with notes F#4, A#4, and C#5. The bass clef staff contains a whole note chord with notes F#2, A#2, and C#3. A fermata is placed above the treble clef staff.


Handwritten musical notation on a grand staff. The treble clef staff contains a whole note chord with notes F#4, A#4, and C#5. The bass clef staff contains a whole note chord with notes F#2, A#2, and C#3. A fermata is placed below the bass clef staff.

Handwritten musical notation on a grand staff. The treble clef staff contains a whole note chord with notes F#4, A#4, and C#5. The bass clef staff contains a whole note chord with notes F#2, A#2, and C#3. A fermata is placed below the bass clef staff.

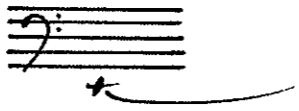
Handwritten musical notation on a grand staff. The treble clef staff contains a whole note chord with notes F#4, A#4, and C#5. The bass clef staff contains a whole note chord with notes F#2, A#2, and C#3. A fermata is placed above the treble clef staff.

Handwritten musical notation on a grand staff. The treble clef staff contains a whole note chord with notes F#4, A#4, and C#5. The bass clef staff contains a whole note chord with notes F#2, A#2, and C#3. A fermata is placed below the bass clef staff.

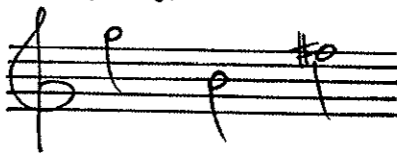
$\lambda = 20$




mute



$\lambda = 80$

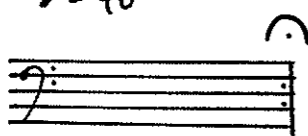


pizz.



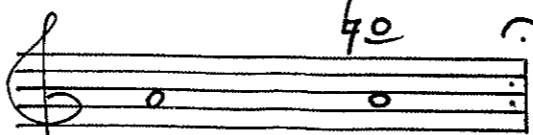
mute

$\lambda = 40$

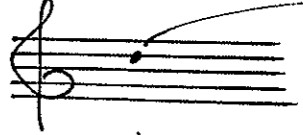


$b\bar{0}$ $b\bar{0}$

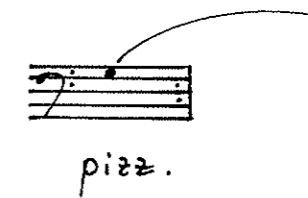
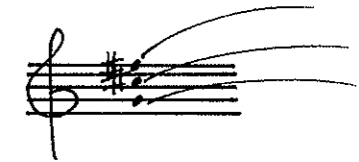
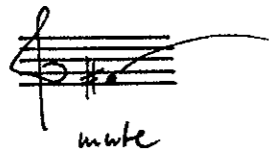
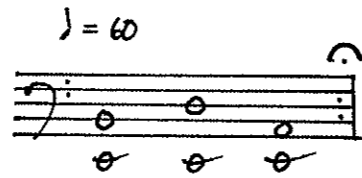
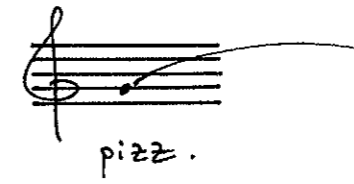
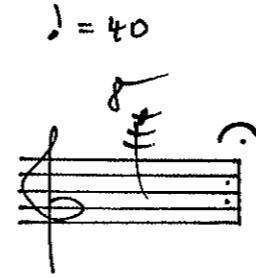
$\lambda = 60$



$b\bar{0}$ 40



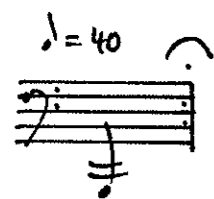
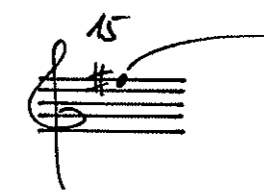
pizz.



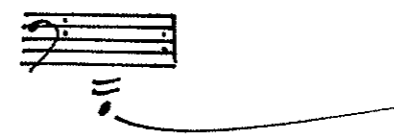
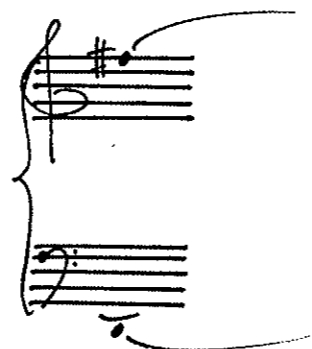
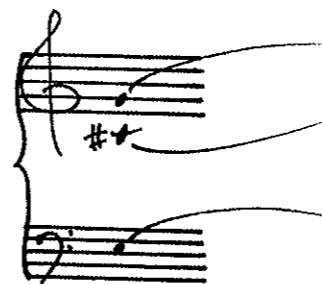
$\text{♩} = 40$



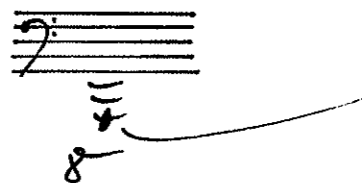
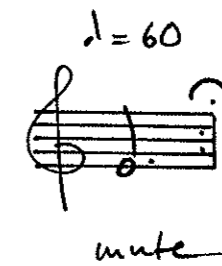
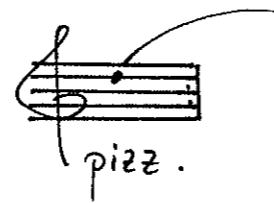
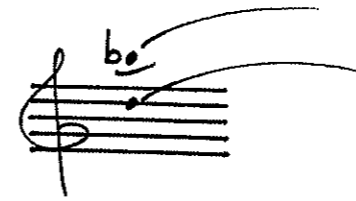
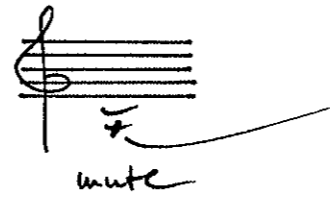
mute



mute



mute



$\text{♩} = 60$

pizz.

$\text{♩} = 60$

mute

$\lambda = 40$

Handwritten musical notation for a piano piece. It consists of two staves, treble and bass clef. The treble staff has a whole note chord of G4 and A4 with a sharp sign over the A. The bass staff has a whole note chord of G3 and A3 with a sharp sign over the A. A tempo marking $\lambda = 40$ is written above the treble staff.

$\lambda = 30$

Handwritten musical notation for a piano piece. It consists of a single treble clef staff with a whole note chord of G4 and A4 with a sharp sign over the A. A tempo marking $\lambda = 30$ is written above the staff.

8

8

pizz.

8

8

mute

pizz.

$\lambda = 40$

8 15

8 15

8 15

Handwritten musical notation for a piano piece. It consists of two staves, treble and bass clef. The treble staff has two whole notes: G4 with a sharp sign and A4 with a sharp sign, marked with a tempo '8' and '15' above them. The bass staff has two whole notes: G3 with a sharp sign and A3 with a sharp sign, marked with a tempo '8' and '15' below them. A tempo marking $\lambda = 40$ is written above the treble staff.

