

6 sonaten für klavier

sonata 5

eva-maria houben

6 sonaten

6 sonatas

für klavier / for piano

sonata 5

eva-maria houben

2011

SONATA V

- **andante cantabile e grazioso**
- **adagio con molta espressione**
- **andante amabile e con moto**

andante cantabile e grazioso

das rechte pedal bleibt niedergedrückt.

töne nacheinander anschlagen und verklingen lassen.
es können maximal drei töne gleichzeitig verklingen (,verwischtes' legato).

eine weite, weit ausschwingende melodie – fast ohne ende.

auf der zweiten seite irgendwo aufhören.

pp, äußerst zart.

keep the right pedal down.

sounds appear one after the other and decay.
at most three sounds may decay simultaneously (“smudged“ legato)

a wide, brightly pending melody – nearly without any end.

finish anywhere on the second sheet of the score.

pp, extremely soft.

This page of musical notation is organized into six systems, each consisting of a treble clef staff and a bass clef staff. The notation includes various notes, accidentals, and fret numbers. The first system starts with a treble clef staff containing a note with a '15' above it, followed by a bass clef staff with a note and an '8' below it. The second system has a treble clef staff with notes and a bass clef staff with a note and a sharp sign. The third system features a treble clef staff with notes and a bass clef staff with notes and an '8' below. The fourth system has a treble clef staff with notes and a bass clef staff with notes and a sharp sign. The fifth system includes a treble clef staff with notes and a bass clef staff with notes and a sharp sign. The sixth system has a treble clef staff with notes and a bass clef staff with notes and a sharp sign. The notation is sparse, focusing on specific notes and their positions on the fretboard.

System 1: Treble clef staff with notes G#4, A4, B4, C5 (marked with an 8va symbol), and D5. Bass clef staff with notes G2, A2, B2, C3.

System 2: Treble clef staff with notes D5, E5, F#5, G5. Bass clef staff with note G2.

System 3: Treble clef staff with notes G#4, A4, B4, C5 (marked with an 8va symbol), D5, E5, F#5, G5. Bass clef staff with notes G2, A2, B2, C3, D3 (marked with a b).

System 4: Treble clef staff with notes G#4, A4, B4, C5 (marked with a b), D5. Bass clef staff with notes G2, A2, B2, C3, D3, E3, F#3.

System 5: Treble clef staff with notes G#4, A4, B4, C5, F#5, G5. Bass clef staff with notes G2, A2, B2, C3, D3.

System 6: Treble clef staff with notes G#4, A4, B4, C5 (marked with an 8va symbol), D5. Bass clef staff with notes G2, A2, B2, C3, D3 (marked with a b), E3, F#3.

adagio con molta espressione

eine oktave tiefer spielen.

das rechte pedal bleibt die ganze zeit über niedergedrückt.

dauer pro klang: 4 impulse, bei 40 impulsen pro minute (= 40 MM).

zeile für zeile spielen.

am schluss einer jeden zeile (mit dem letzten klang) die zeile verklingen lassen.

insgesamt leise.

die zeilen zwischen wiederholungszeichen werden beliebig oft wiederholt.

die zeile nach der letzten wiederholung verklingen lassen.

auf der zweiten seite nach irgendeiner zeile aufhören.

lowest register.

the right pedal is pressed down during the whole performance.

duration of one sound: 4 beats, thinking 40 beats per minute (= 40 MM).

play line by line.

at the end of a line (with the last sound) the line decays.

soft.

the lines within repetitions may be repeated ad libitum.

after the last repetition the line decays.

finish anywhere on the second sheet of the score – after any line.

A single bass clef staff containing eight chords. The notes are: G2-B2, A2-C3, B2-D3, C3-E3, D3-F3, E3-G3, F3-A3, and G3-B3.

8 sempre

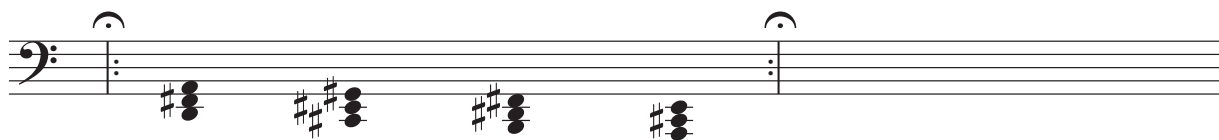
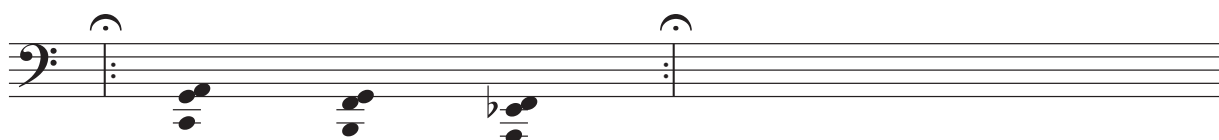
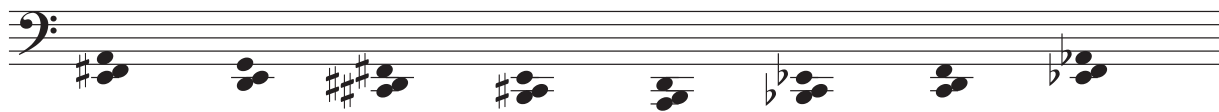
A single bass clef staff containing eight chords. The notes are: D#3-F#3, E#3-G#3, F#3-A#3, Bb3-D3, E3-G3, F#3-A3, Bb3-D3, and E#3-G#3.

A single bass clef staff containing five chords. The notes are: G2-B2, A2-C3, B2-D3, D#3-F#3, and E#3-G#3.

A single bass clef staff containing two chords: G2-B2 and D#3-F#3. Each chord has a fermata above it.

A single bass clef staff containing four chords: D#3-F#3, E#3-G#3, F#3-A#3, and D#3-F#3.

A single bass clef staff containing four chords: G2-B2, A2-C3, D#3-F#3, and E#3-G#3. Each chord has a fermata above it.



andante amabile e con moto

wiederholung (jeweils einer klangfolge viertel – halbe)
beliebig oft.

viertel: etwa 50 MM.

una corda.

rechtes pedal auf jedem klang.

insgesamt sehr zart und leise – fast wie ein schlaflied.

repetition (of a pair quarter note – half note) ad libitum.

quarter note: roughly 50 MM.

una corda.

right pedal on each sound.

the whole very tender and soft – nearly as a lullaby.

