

**clouds and waves and stars and stones**

duo für violoncello und klavier

duo for violoncello and piano

eva-maria houben

2012

clouds and waves and stars and stones  
duo für violoncello und clavier  
duo for violoncello and piano

eva-maria houben  
2012

für antoine beuger

violoncello:

jeder klang ein ruhiger bogenstrich.

phrasierung: innigstes rubato.

klavier:

jeder klang ein ruhiges verklingen.

pedal: gelegentlich, poetisch.

phrasierung: innigstes rubato.

beide:

eine ruhige, weite und stille melodie singen.

jeder spielt in seinem eigenen tempo.

violoncello:

each sound a quiet bow.

phrasing: rubato with all your heart.

piano:

each sound a quiet fade out.

pedal: occasionally, poetically.

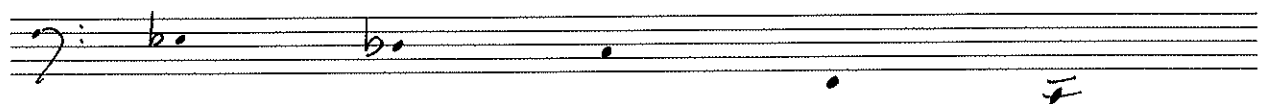
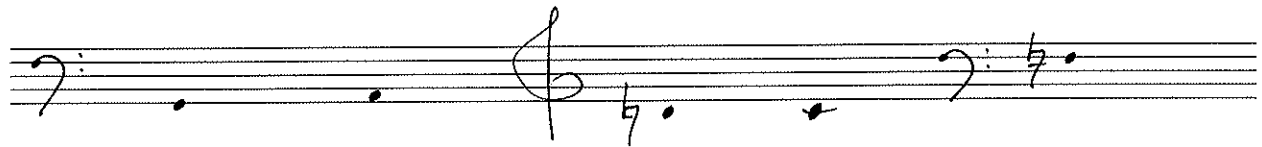
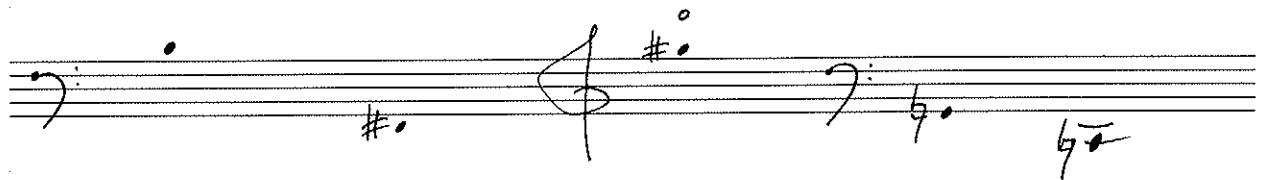
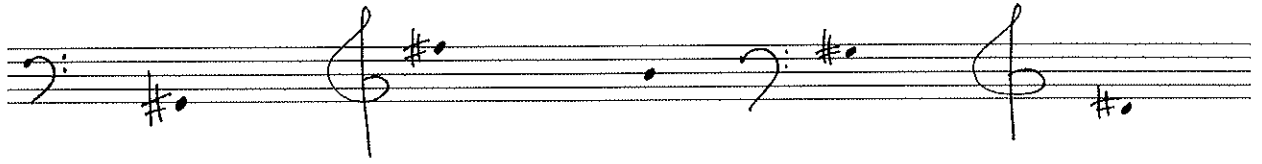
phrasing: rubato with all your heart.

both:

singing a calm, wide and silent melody.

each one following his own tempo.

Violoncello



piano

Handwritten musical notation on a five-line staff. It features a treble clef, a key signature of one sharp (F#), and a common time signature. The notation includes a whole note chord with a sharp sign and a fermata, followed by a whole note chord with a sharp sign and a fermata. There are also some handwritten symbols above the staff.

Handwritten musical notation on a five-line staff. It features a treble clef, a key signature of one sharp (F#), and a common time signature. The notation includes a whole note chord with a sharp sign and a fermata, followed by a whole note chord with a sharp sign and a fermata. There are also some handwritten symbols above the staff.

Handwritten musical notation on a five-line staff. It features a treble clef, a key signature of one sharp (F#), and a common time signature. The notation includes a whole note chord with a sharp sign and a fermata, followed by a whole note chord with a sharp sign and a fermata. There are also some handwritten symbols above the staff.

Handwritten musical notation on a five-line staff. It features a treble clef, a key signature of one sharp (F#), and a common time signature. The notation includes a whole note chord with a sharp sign and a fermata, followed by a whole note chord with a sharp sign and a fermata. There are also some handwritten symbols above the staff.

Handwritten musical notation on a five-line staff. It features a treble clef, a key signature of one sharp (F#), and a common time signature. The notation includes a whole note chord with a sharp sign and a fermata, followed by a whole note chord with a sharp sign and a fermata. There are also some handwritten symbols above the staff.

Handwritten musical notation on a five-line staff. It features a treble clef, a key signature of one sharp (F#), and a common time signature. The notation includes a whole note chord with a sharp sign and a fermata, followed by a whole note chord with a sharp sign and a fermata. There are also some handwritten symbols above the staff.