

tombeau

piano

eva-maria houben

© edition wandelweiser **2015**

catalogue number ew16.234

tombeau

piano

eva-maria houben

2015

twin composition: le jardin suspendu.

for john mcalpine & andy lee.

pages 1 – 3: right pedal throughout.

quarter note: 20 MM.

page 4, first five lines: free in tempo, without right pedal.


○ : longer duration.

● : short duration.

always libero: quasi parlando.

page 4, last line: right pedal throughout.

quarter note: 20 MM.

⌢ : repeat for a long time. in the course of repetition it is becoming more and more intense – until it will go no further. 

dynamics

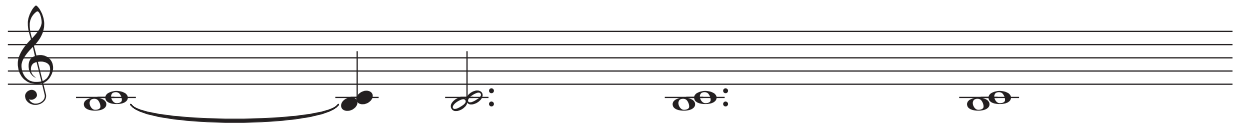
pages 1 – 3: approximately mezzoforte (forte with soft attack).

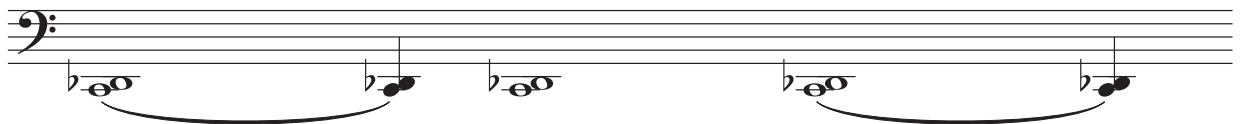
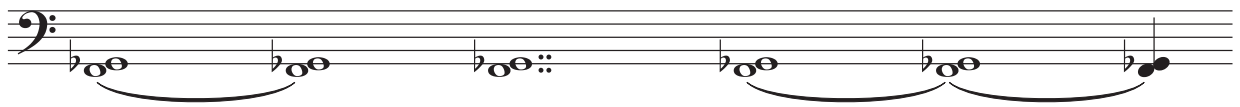
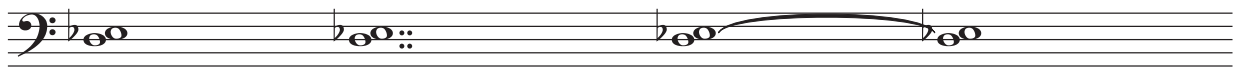
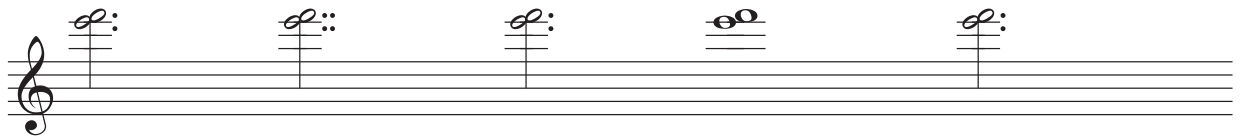
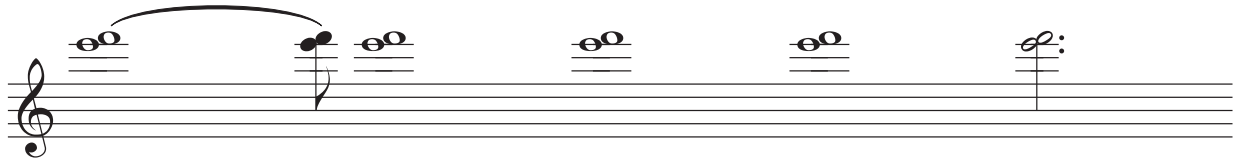
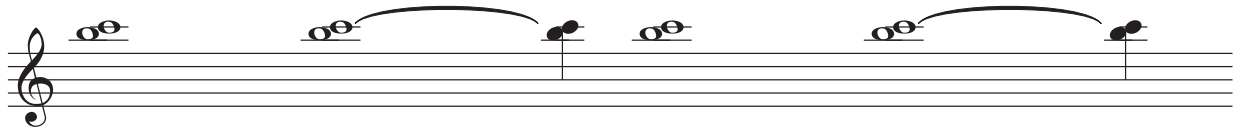
find a way that the sounds with the longest duration do not vanish before the end of the note.

page 4, first five lines: very soft (pp – ppp).

page 4, last line: like beating stones. enjoy the decay of the sound.

♩ = 20 MM





senza misura

senza ped.

8va

♩ = 20 MM

15

ped. →

