

tiefe

klavier

depth

piano

eva-maria houben

2016

tiefe
klavier
depth
piano

eva-maria houben
2016

one can make a day of any size, and regulate the rising and setting of his own sun and the brightness of its shining.

(john muir)

for jesse goin.

I

(sehr) leise.

linkes und rechtes pedal bleiben stets gedrückt.

tempo: ruhig schwebend.

nur die tasten von c^1 bis c^5 benutzen:

dabei bleiben die relationen hoher ton – mittlerer ton – tiefer ton gewahrt; die absolute tonhöhe innerhalb der oktavlagen kann schwanken. (die notierte tonfolge $cis^1 - e^2 - g^1$ könnte also z. b. als $cis^2 - e^4 - g^3$ gespielt werden.)

vorzeichen gelten immer nur einmal vor der betreffenden note.

von jeder seite beliebig viele dreitongruppen spielen.

fortführung auf der nächsten seite attacca.

II

die drei tiefsten töne gleichzeitig.

langsam und regelmäßig.

eine ganze zeitlang.

I

(very) soft.

left and right pedal throughout.

tempo: calmly floating.

use only the keys $c^1 - c^5$:

save the relations high tone – medium tone – low tone; the absolute pitch can change. (the notated tone sequence c^1 sharp – e^2 – g^2 could for example be played as c^2 sharp – e^4 – g^3 .)

accidentals are valid only once before the relevant note.

per page choose as many groups of three tones as you like.

continuation on the next page attacca.

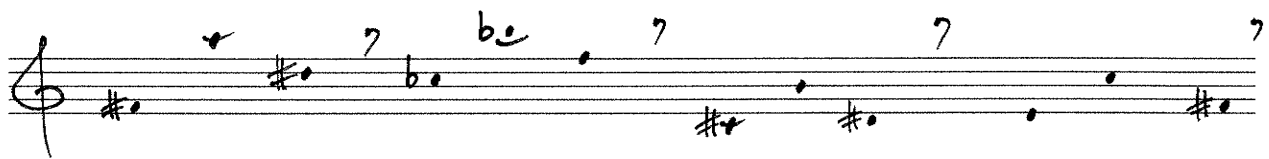
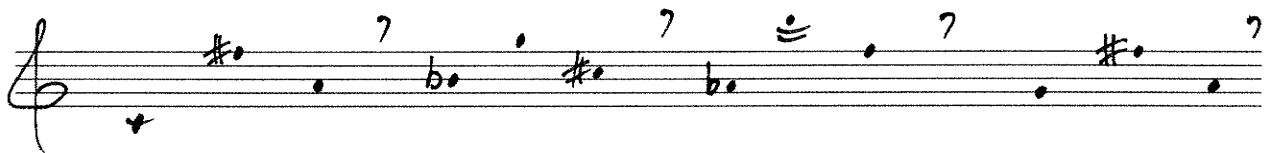
II

the three lowest notes simultaneously.

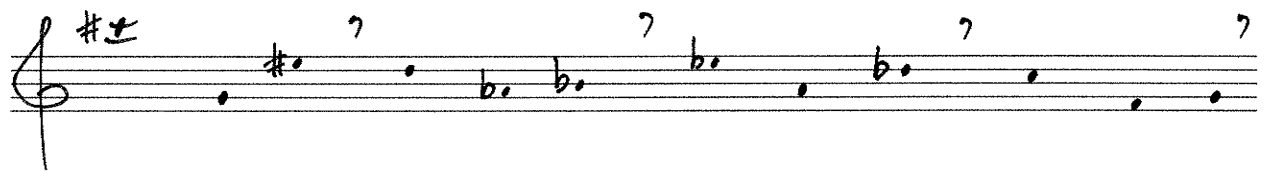
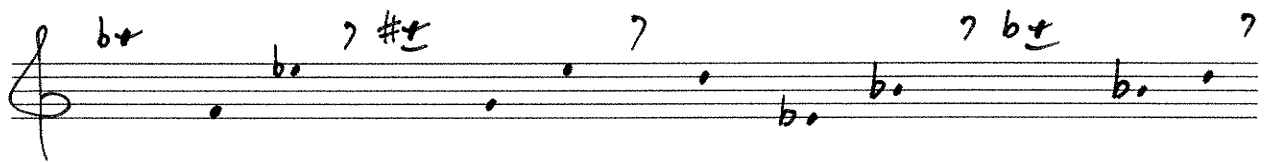
slowly and regularly.

for quite some time.

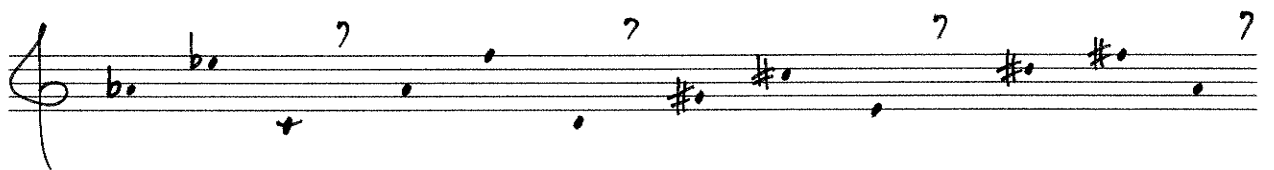
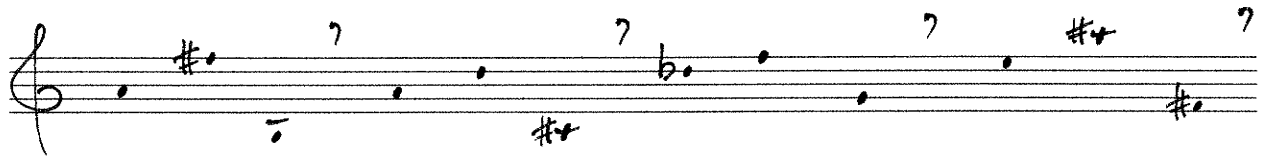
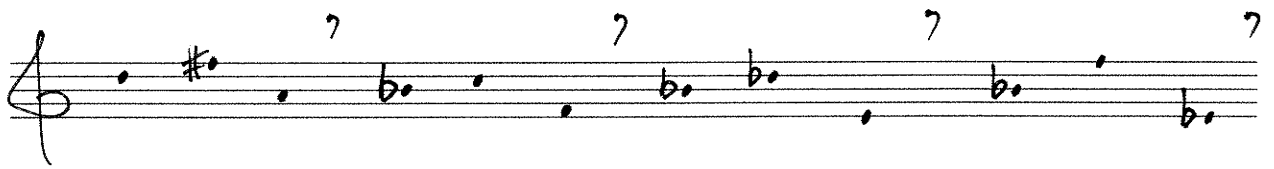
I a



I b



I c



I d

Handwritten musical notation on three staves, each beginning with a treble clef. The notation consists of notes and accidentals with various annotations:

- Staff 1:** Notes on a five-line staff. Annotations above the notes include a plus sign (+) and question marks (?). Below the staff, there are accidentals: a flat with a bar over it (b̄), a sharp (#), and a double sharp (##).
- Staff 2:** Notes on a five-line staff. Annotations above the notes include a flat with an accent (b̂), a flat (b), a flat with a bar over it (b̄), and a flat with a bar over it and an accent (b̂̄). Below the staff, there is a plus sign (+).
- Staff 3:** Notes on a five-line staff. Annotations above the notes include a flat with an accent (b̂), a sharp with a question mark (#?), and a question mark (?). Below the staff, there is a double sharp with a plus sign (##+).