

gesang XI
gesänge des tages und der nacht

organ, ensemble

eva-maria houben

© edition wandelweiser **2018**

catalogue number ew16.264.11

gesänge des tages und der nacht

songs of the day and night

gesang XI

orgel und ensemble

song XI

organ and ensemble

eva-maria houben

2018

gesänge des tages und der nacht

songs of the day and night

gesang XI

orgel und ensemble

song I

organ and ensemble

eva-maria houben

2018

for ORDINARY AFFECTS

orgel

die orgel öffnet dem ensemble einen weiten raum.

leise.

im 8'-register.

ganz langsam und träumerisch hinabsinken.

ensemble

betrete den raum, den die orgel eröffnet hat, mit einer oder einigen der zweit- oder dreitongruppen.

die oktavlage ist von gruppe zu gruppe offen.

vielleicht eher zurückhaltend.

organ

the organ opens a wide space for the ensemble to dwell.

soft.

8 feet register.

sink down very slowly and dreamily.

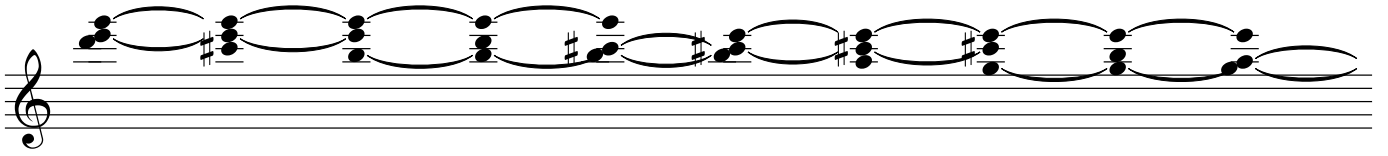
ensemble

enter the organ space and dwell in it by playing one or more two-tone or three-tone groups.

the register is open from group to group.

perhaps somewhat restraint.

organ



ensemble

This image displays ten staves of musical notation, likely for a string ensemble. Each staff begins with a treble clef and a key signature of one sharp (F#). The notation consists of eighth and sixteenth notes, often grouped with slurs and beams. The music is written in a consistent style across all staves, with various rhythmic patterns and melodic lines. The notes are primarily located in the middle and lower registers of the staves. The overall appearance is that of a professional musical score page.