

echo fantasy II

horn, piano

eva-maria houben

© **edition wandelweiser 2018**

catalogue number ew16.307.2

echo fantasy II

horn (in F) and piano

eva-maria houben

2018

dedicated to Wilfried Krüger.

ruhe – frieden – stille.

zwei für sich im weiten raum.

resonanz.

ein weites, ruhiges still werden.

der/die hornist(in) ist auch sänger(in): siehe das eigene system (◇) unter dem system für das horn.

im horn können (für frauenstimme) gesungener und geblasener ton oktaviert werden.

klavier: das rechte pedal bleibt während der ausführung einer partiturseite durchgehend niedergedrückt.

24 einzelne seiten, jede seite eine einladung zum verweilen.

orte der begegnung, der ruhe.

calm – peace – silence.

two for themselves in a wide space.

resonance.

a wide and calm becoming silent.

the horn player is vocalist, too: see the own system (◇) below the system of the horn.

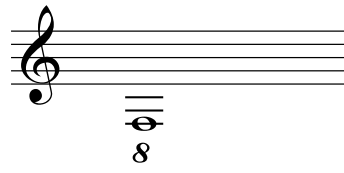
a female player may choose (for vocal and instrumental sound) a higher register, if the given sounds are too low.

piano: right pedal throughout during each performance of one page of the score.

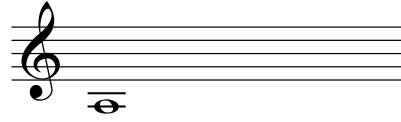
24 single pages, each page an invitation to dwell together.

locations and situations of encounter and calmness.

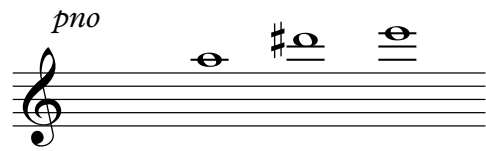
hn



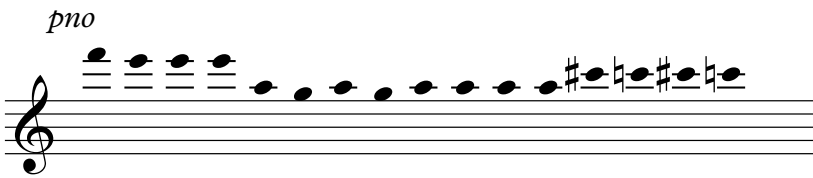
hn



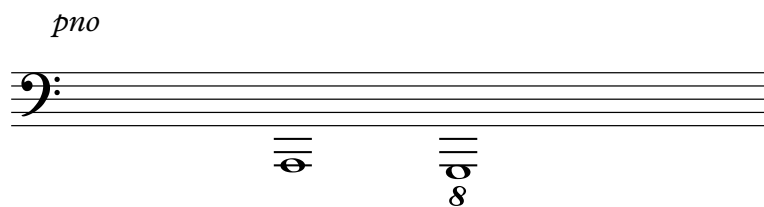
pno



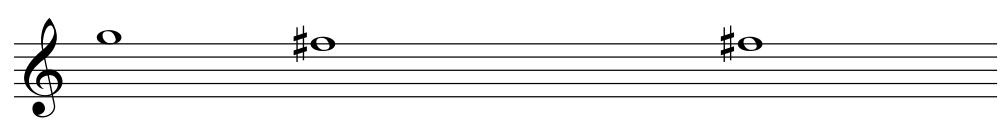
pno



pno

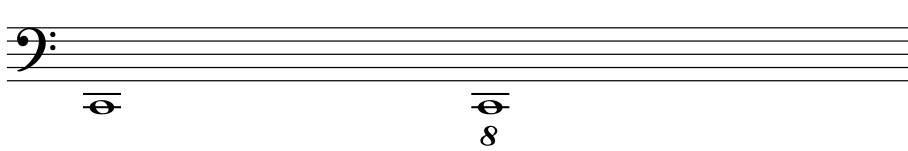


hn



A musical staff with a treble clef. It contains three quarter notes: G4 (first line), A#4 (second space), and B4 (third space).

pno



A musical staff with a bass clef. It contains two notes: G2 (below the staff, marked with a horizontal line) and G3 (below the staff, marked with an infinity symbol).

hn



A musical staff with a treble clef. It contains three quarter notes: F#4 (first space), G4 (second line), and A4 (second space).

pno *8^{va}*

Musical notation for piano (pno) with an 8va bracket. The notation shows a series of chords and notes on a treble clef staff, with a final note marked with a sharp sign.

hn

Musical notation for horn (hn) on a treble clef staff, showing three notes: a sharp sign, a whole note, and a sharp sign.

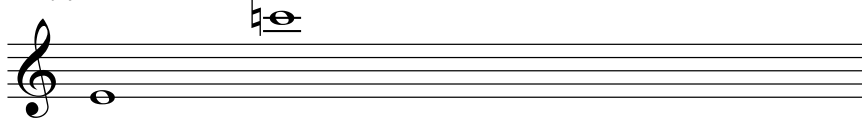
hn

Musical notation for horn (hn) on a treble clef staff, showing a sharp sign and the number 8.

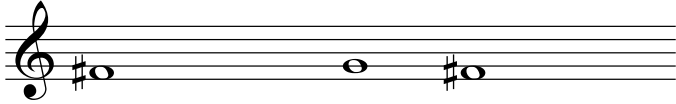
pno



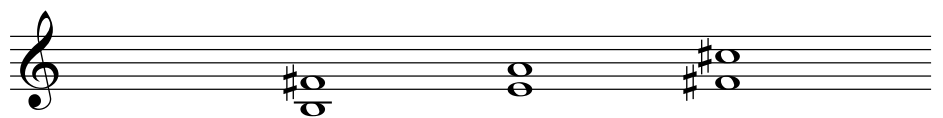
hn



hn

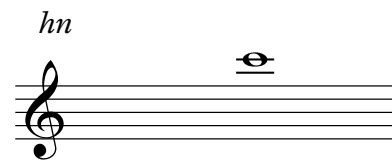
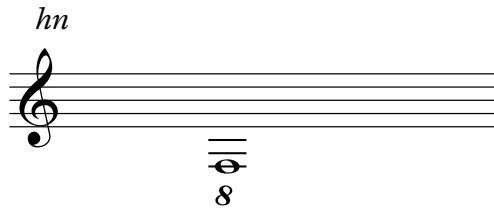


pno

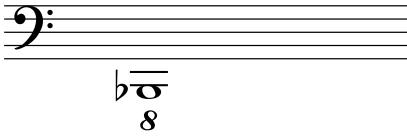


hn

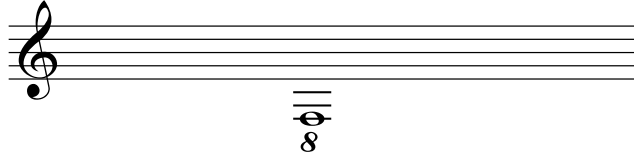




pno



hn



hn

Musical notation for horn (hn) on a treble clef staff. It features a whole note G4, a whole note F4, and a whole note E4.

pno

Musical notation for piano (pno) on a bass clef staff. It features a whole note G2, a whole note F2, and a whole note E2 with a sharp sign.

hn

Musical notation for horn (hn) on a treble clef staff. It features a whole note G4, a whole note F4, and a whole note E4.

hn

Musical notation for Horn 1 (hn) in treble clef. The staff contains four whole notes: G4, B4, D5, and G5. A vertical line with a diamond symbol is placed between the first and second notes, and another between the second and third notes, indicating a 12-month interval.

pno

Musical notation for Piano (pno) in bass clef. The staff contains four chords: G2, G2, G2, and G2.

hn

Musical notation for Horn 1 (hn) in treble clef. The staff contains four whole notes: G#4, B#4, D#5, and G#5. A vertical line with a diamond symbol is placed between the first and second notes, and another between the second and third notes, indicating a 12-month interval.

hn

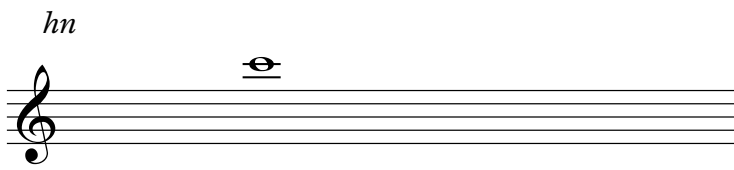
A single musical staff for a horn, starting with a treble clef and a dynamic marking of *hn*. The staff contains five notes: four eighth notes (G4, F4, E4, D4) and one half note (C4). The notes are positioned on the lower lines of the staff.

hn

Two musical staves for a horn, starting with a treble clef and a dynamic marking of *hn*. The upper staff contains three half notes (Bb3, Ab3, Gb3) with an 8-measure rest below each. The lower staff contains two half notes (Fb3, Eb3) with an 8-measure rest below each.

pno

A single musical staff for piano, starting with a bass clef and a dynamic marking of *pno*. The staff contains three notes: a half note (Bb2), a half note (Ab2) with an 8-measure rest below it, and a half note (Gb2) with an 8-measure rest below it.



pno

Musical notation for piano (pno). The score consists of two staves: a treble staff and a bass staff. The treble staff begins with a treble clef and contains a series of chords, each marked with a sharp sign (#). The chords are: F#4-A4-C5, G4-B4-D5, A4-C5-E5, F#4-A4-C5, G4-B4-D5, A4-C5-E5, F#4-A4-C5, G4-B4-D5, A4-C5-E5, and F#4-A4-C5. The bass staff contains corresponding bass notes: F#3, G3, A3, F#3, G3, A3, F#3, G3, A3, and F#3. The final two notes of the treble staff are marked with *8^{va}* and *15^{ma}* above a dashed line, indicating an octave and a fifteenth octave respectively.

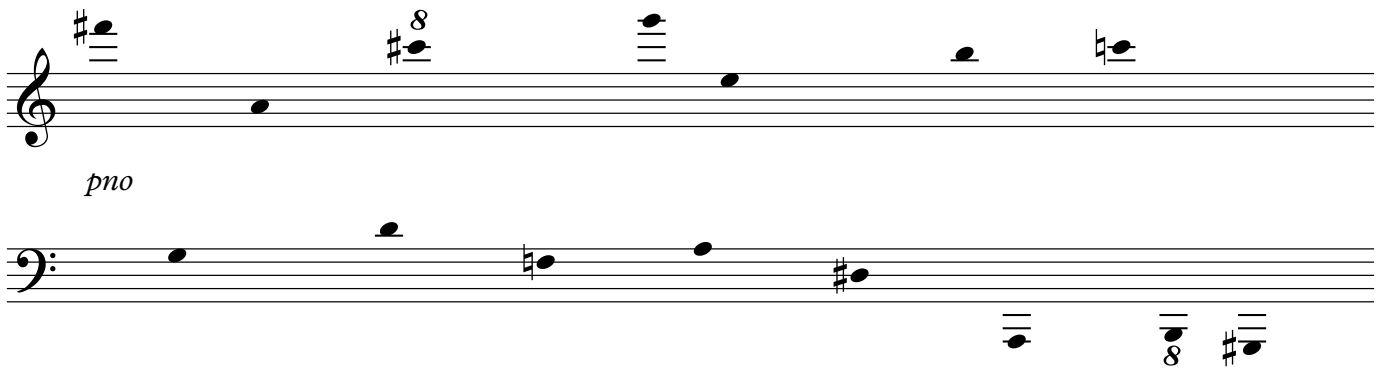
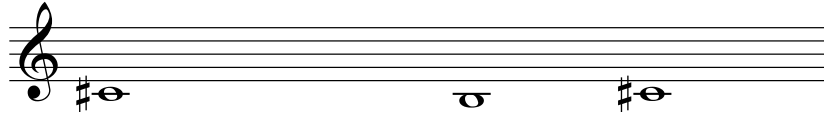
hn

Musical notation for horn (hn). The score is on a single treble staff with a treble clef. It contains a sequence of notes: F#4, G4, A4, B4, C5, D5, and E5.

pno

Musical notation for piano (pno). The score is on a single bass staff with a bass clef. It contains four notes: F#3, G3, A3, and B3.

hn



pno

Musical score for piano (pno). The treble clef staff contains three notes: a half note G#4, a half note A#4, and a half note B#4. The bass clef staff contains three notes: a half note G3, a half note A3, and a half note B3. A dynamic marking *pno* is placed above the first note of the bass staff. A repeat sign is located above the third note of the treble staff.

Musical score for horn (hn) in two staves. The upper staff (treble clef) contains three notes: a half note G#4, a half note A#4, and a half note B#4. The lower staff (treble clef) contains three notes: a half note G3, a half note A3, and a half note B3. A dynamic marking *hn* is placed above the first note of the upper staff.

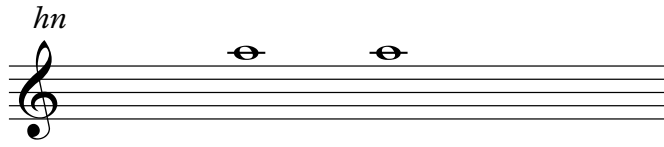
Musical score for horn (hn) on a single staff. It contains three notes: a half note G#4, a half note A#4, and a half note B#4. A dynamic marking *hn* is placed above the first note.

Musical score for horn (hn) on a single staff. It contains four notes: a half note G#4, a half note A#4, a half note B#4, and a half note G4. A dynamic marking *hn* is placed above the first note.

8 *hn*

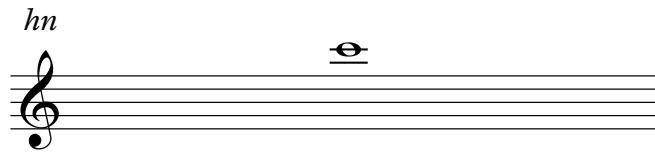
gliss. *gliss.*

hn



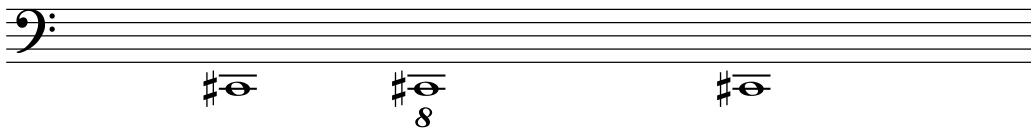
A musical staff with a treble clef. Two notes are present: a whole note on the second line (D4) and a whole note on the second space (E4).

hn



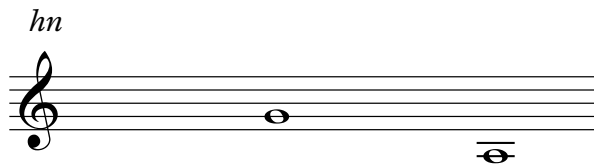
A musical staff with a treble clef. One note is present: a whole note on the second space (E4).

pno



A musical staff with a bass clef. Three notes are present: a whole note on the second space (D3), a whole note on the second space (D3) with an '8' below it, and a whole note on the second space (D3).

hn



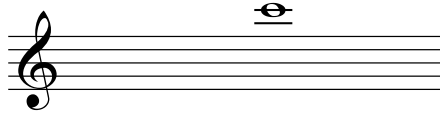
A musical staff with a treble clef. Two notes are present: a whole note on the second space (E4) and a whole note on the second space (E4) with a horizontal line below it.

pno



A musical staff with a treble clef. Seven notes are present: a whole note on the first space (D4) with a horizontal line below it, followed by seven whole notes on the second space (E4), each with a horizontal line below it.

hn



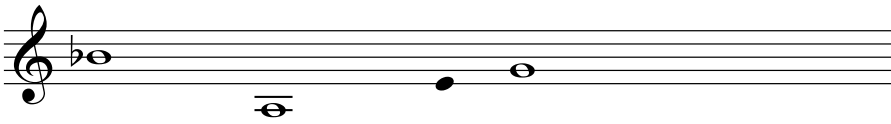
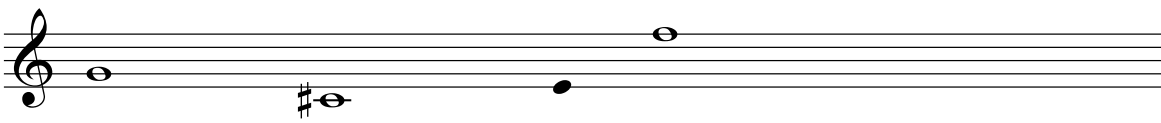
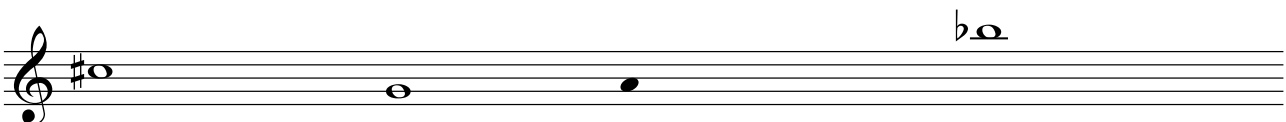
pno



Musical notation for two staves. The top staff is in treble clef with a '4' below the clef. It contains three whole notes: G4, A4, and B4. The bottom staff is in bass clef with an '8' below the clef. It contains three whole notes: F#3, G#3, and A#3. The dynamic marking *hn* is placed between the two staves.

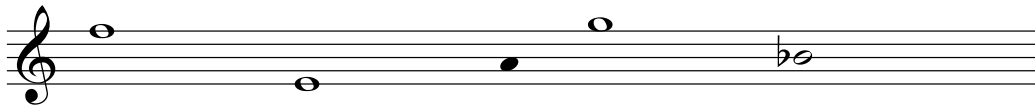
Musical notation for a single staff in treble clef with an '8' below the clef. It contains three whole notes: G4, F#4, and E4. The dynamic marking *hn* is placed above the staff.

Musical notation for a single staff in bass clef. It contains three whole notes: G2, F2, and E2. The dynamic marking *pno* is placed above the staff.

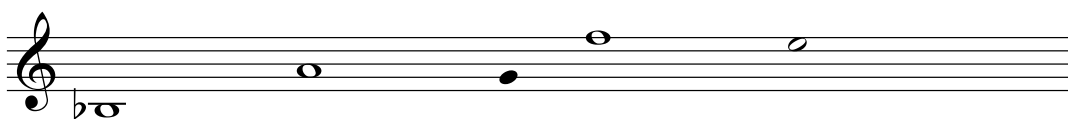
hn*hn**hn*

pno

Piano accompaniment notation. The staff begins with a treble clef and a key signature of one sharp (F#). The melody consists of the following notes: F#4, G4, A4, B4, C5, B4, A4, G4. A bass clef is positioned above the staff. Below the staff, there are several notes: F#3, G3, A3, B3, C4, B3, A3, G3. A dashed line labeled '8vb' indicates an octave transposition for the notes F#3, G3, A3, and B3.

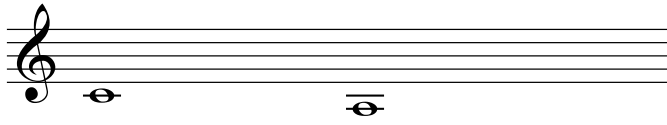
hn

Horn notation. The staff begins with a treble clef. The melody consists of the following notes: F#4, G4, A4, B4, C5, B4, A4, G4.

hn

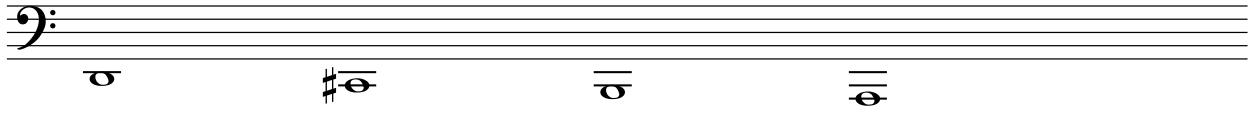
Horn notation. The staff begins with a treble clef and a key signature of one flat (Bb). The melody consists of the following notes: Bb3, C4, D4, E4, F4, E4, D4, C4.

hn



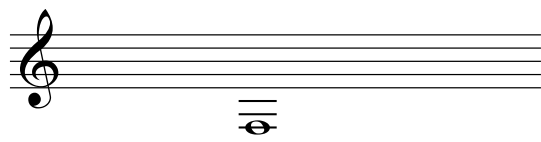
A musical staff in treble clef with two notes: a G4 (first line) and a G5 (second space).

pno

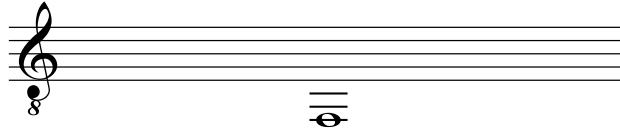
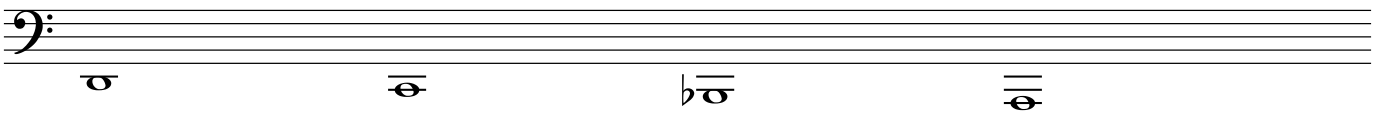


A musical staff in bass clef with four notes: a G3 (second space), a G#3 (third space), a G4 (first line), and a G5 (second space).

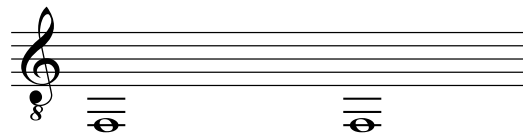
hn



A musical staff in treble clef with one note: a G5 (second space).

hn*pno*

hn



pno

