

silent night

strings

eva-maria houben

© edition wandelweiser **2019**

catalogue number ew16.313

silent night

strings

eva-maria houben

2019

the piece *nachtstück* for double bass might be considered as a twin composition, especially dominic lash's performance during a strong night rain.

all unintended sounds and noises inside and outside of the performance place are welcome.

there are 24 pages.

empty pages:

being together in silence—listening together, breathing together, dreaming together, growing older together.

the other pages:

being together in silence—listening together, breathing together, dreaming together, growing older together, playing some sounds. proposals of sounds (natural partials)—proposals for violin, viola, violoncello and double bass. any other strings may participate finding their own partials.

one performer plays at most twice per page.

each sound: soft and silent; very long (nearly inaudible changes of the bow).

the performers decide together on the order of the pages.

violin

Violin staff with notes and fingerings. The notes are on the G-clef staff. The notes are: G4 (fingering II 1), B4 (fingerings III 3, II 2), D5 (fingerings IV 9, III 6, II 4), and E5 (fingerings III 12, II 8). The numbers 8 and 15 are written above the notes D5 and E5 respectively.

viola

Viola staff with notes and fingerings. The notes are on the C-clef staff. The notes are: G4 (fingering I 1), B4 (fingerings II 3, I 2), and D5 (fingerings IV 13, III 9, II 6, I 4).

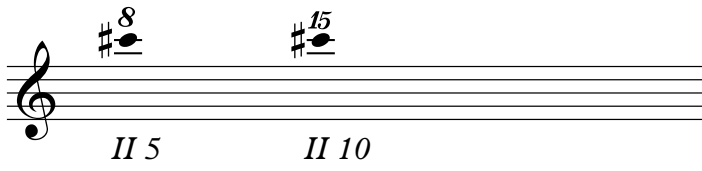
violoncello

Violoncello staff with notes and fingerings. The notes are on the C-clef staff. The notes are: G4 (fingerings I 1, I 1), B4 (fingerings II 3, I 2), and D5 (fingerings IV 13, III 9, II 6, I 4).

double bass

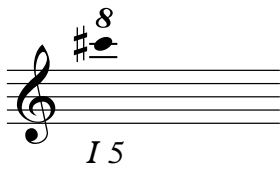
Double bass staff with notes and fingerings. The notes are on the F-clef staff. The notes are: G3 (fingering III 1), B2 (fingering III 2), D3 (fingerings III 4, II 3), E3 (fingerings III 8, II 6), and F3 (fingerings IV 21, III 16, II 12, I 9).

violin



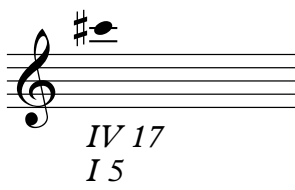
Musical notation for violin, showing two notes on a five-line staff. The first note is a sharp (F#) with a finger number 8 above it, and the second note is a sharp (C#) with a finger number 15 above it. Below the staff, the fingering positions are labeled as II 5 and II 10.

viola



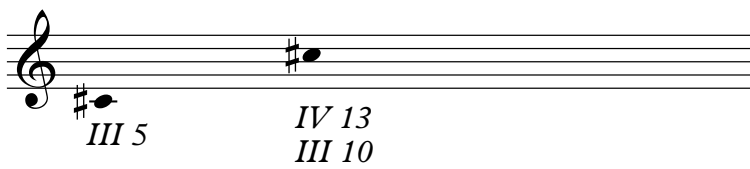
Musical notation for viola, showing one note on a five-line staff. The note is a sharp (F#) with a finger number 8 above it. Below the staff, the fingering position is labeled as I 5.

violoncello



Musical notation for violoncello, showing one note on a five-line staff. The note is a sharp (F#) with a finger number 8 above it. Below the staff, the fingering positions are labeled as IV 17 and I 5.

double bass



Musical notation for double bass, showing two notes on a five-line staff. The first note is a sharp (F#) with a finger number 5 above it, and the second note is a sharp (C#) with a finger number 13 above it. Below the staff, the fingering positions are labeled as III 5 and IV 13 / III 10.

violin

III 5 III 10 I 9

viola

II 5 II 10

violoncello

II 5 II 10

double bass

IV 9 IV 18
II 5 III 13
 II 10

violin

Violin staff with notes and fingerings: $\overline{IV 1}$, $IV 2$, $IV 4$, $IV 8$, $II 7$. The notes are on the G-clef staff. The first note is on the first line (G4) with a bar over it and 'IV 1' below. The second note is on the second space (B4) with 'IV 2' below. The third note is on the third space (D5) with 'IV 4' below. The fourth note is on the fourth space (F5) with an '8' above and 'IV 8' below. The fifth note is on the first line (G5) with a '15' above and 'II 7' below.

viola

Viola staff with notes and fingerings: $III 1$, $IV 3$, $IV 6$, $IV 12$. The notes are on the C-clef staff. The first note is on the first line (C4) with 'III 1' below. The second note is on the second space (D4) with 'IV 3' above and 'III 2' below. The third note is on the third space (E4) with 'IV 6' above and 'III 4' below. The fourth note is on the fourth space (G4) with an '8' above and 'IV 12' above and 'III 8' below.

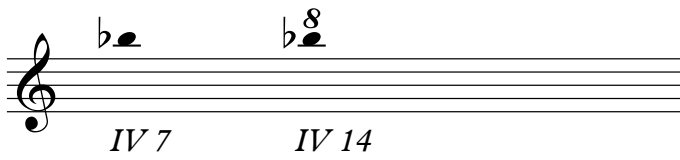
violoncello

Violoncello staff with notes and fingerings: $III 1$, $IV 3$, $IV 6$, $IV 12$. The notes are on the F-clef staff. The first note is on the first line (C3) with 'III 1' below. The second note is on the second space (D3) with 'IV 3' above and 'III 2' below. The third note is on the third space (E3) with 'IV 6' above and 'III 4' below. The fourth note is on the fourth space (G3) with 'IV 12' above and 'III 8' below.

double bass

Double bass staff with notes and fingerings: $I 1$, $I 2$, $III 7$, $IV 19$. The notes are on the F-clef staff. The first note is on the first line (C2) with 'I 1' below. The second note is on the second space (D2) with 'I 2' below. The third note is on the third space (E2) with 'III 7' above and 'I 4' below. The fourth note is on the fourth space (G2) with 'IV 19' above and 'III 14' above and 'I 8' below.

viola



A musical staff for the viola, featuring a treble clef. The staff contains two notes: a flat E (E^b) on the second line and a flat E with an octave sign (E^b 8) on the second space. Below the staff, the chord labels "IV 7" and "IV 14" are positioned under the respective notes.

violoncello



A musical staff for the violoncello, featuring a treble clef. The staff contains two notes: a flat E (E^b) on the second line and a flat E with an octave sign (E^b 8) on the second space. Below the staff, the chord labels "IV 7" and "IV 14" are positioned under the respective notes.

violin



A single staff of music in treble clef. It contains two notes: a sharp sign followed by a dot on the second line (F#4), labeled '15' above it, and a sharp sign followed by a dot on the second space (F#5), labeled '22' above it.

double bass



A single staff of music in bass clef. It contains four notes: a sharp sign followed by a dot on the first line (F#2), labeled 'IV 5' below it; a sharp sign followed by a dot on the second line (F#3), labeled 'IV 10' below it; a sharp sign followed by a dot on the second space (F#4), labeled 'IV 20' and 'III 15' below it; and a sharp sign followed by a dot on the second space (F#5), labeled 'IV 20' and 'III 15' below it.

violin

Violin staff with notes and fingerings. The notes are on the first string. The first note is on the first line (G4). The second note is on the second space (B4). The third note is on the third space (D5). The fourth note is on the fourth space (F5). Fingerings are indicated by numbers 1, 2, 3, 4, 6, 8, 9, 12, 13, 15.

<i>I 1</i>	<i>II 3</i> <i>I 2</i>	<i>IV 13</i> <i>III 9</i> <i>II 6</i> <i>I 4</i>	<i>II 12</i> <i>I 8</i>
------------	---------------------------	---	----------------------------

viola

Viola staff with notes and fingerings. The notes are on the second string. The first note is on the second line (C4). The second note is on the second space (E4). The third note is on the third space (G4). Fingerings are indicated by numbers 3, 5, 6, 9, 10, 13.

<i>IV 5</i>	<i>IV 10</i> <i>I 3</i>	<i>III 13</i> <i>II 9</i> <i>I 6</i>
-------------	----------------------------	--

violoncello

Violoncello staff with notes and fingerings. The notes are on the second string. The first note is on the second line (C4). The second note is on the second space (E4). The third note is on the third space (G4). Fingerings are indicated by numbers 3, 5, 6, 9, 10, 13, 20.

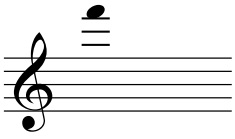
<i>IV 5</i>	<i>IV 10</i> <i>I 3</i>	<i>IV 20</i> <i>III 13</i> <i>II 9</i> <i>I 6</i>
-------------	----------------------------	--

double bass

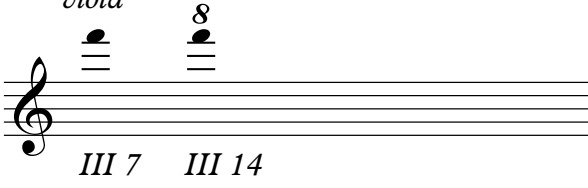
Double bass staff with notes and fingerings. The notes are on the first string. The first note is on the first line (G2). The second note is on the second space (B2). The third note is on the third space (D3). The fourth note is on the fourth space (F3). The fifth note is on the fifth space (A3). Fingerings are indicated by numbers 1, 2, 3, 4, 6, 8, 9, 12, 16.

<i>IV 1</i>	<i>IV 2</i>	<i>IV 4</i> <i>III 3</i>	<i>IV 8</i> <i>III 6</i>	<i>IV 16</i> <i>III 12</i> <i>II 9</i>
-------------	-------------	-----------------------------	-----------------------------	--

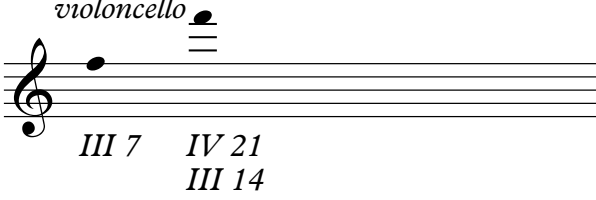
violin



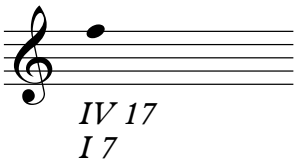
viola



violoncello



double bass



violin

III 1 IV 3
 III 2 IV 6
 III 4 IV 12
 III 8 I 7

8 15

viola

II 1 III 3 IV 9 III 12
 II 2 III 6 II 8
 II 4

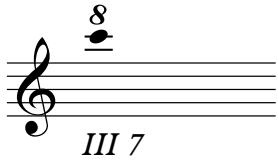
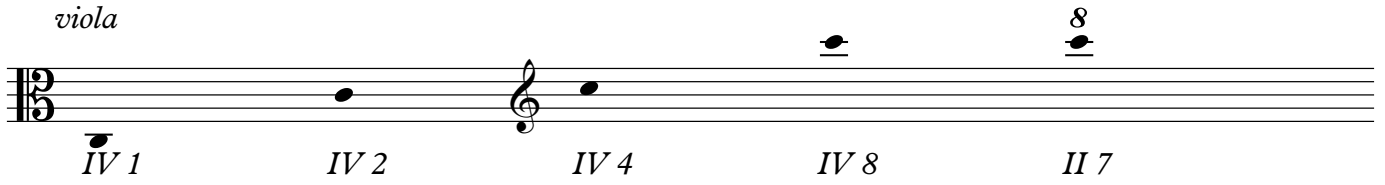
8 8

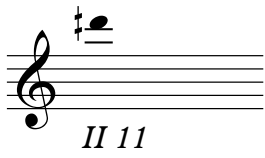
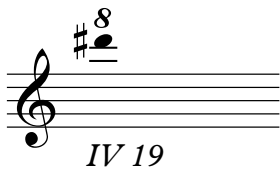
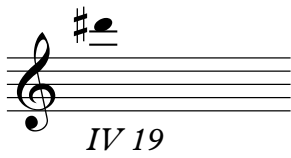
violoncello

II 1 III 3 IV 9 IV 18
 II 2 III 6 III 12
 II 4 II 8

double bass

II 1 II 2 IV 7 IV 14
 II 4 II 8
 I 3 I 6

violin*viola**violoncello**double bass*

violin*viola**violoncello**double bass*