

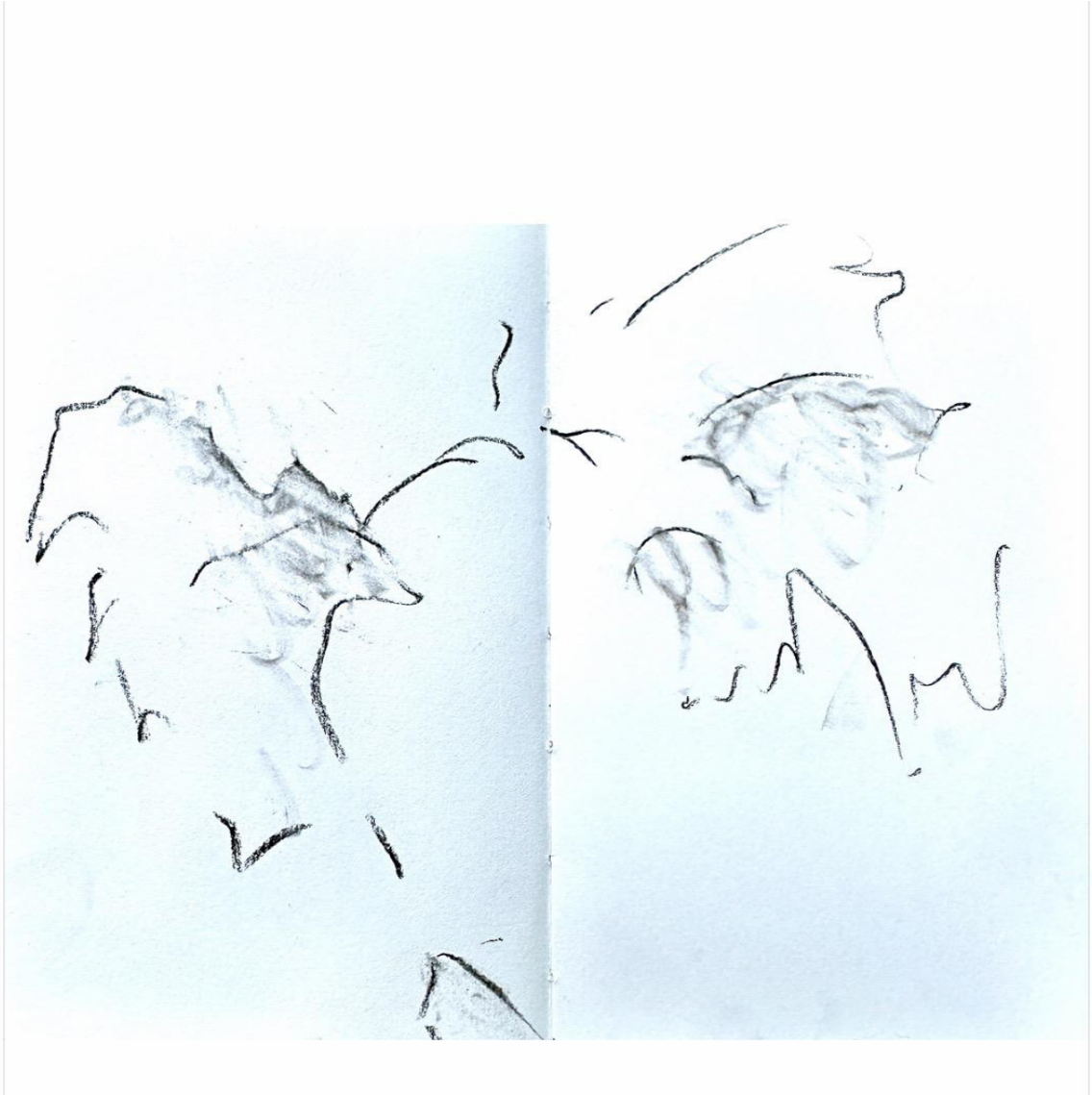
interstices 23

piano

eva-maria houben

© **edition wandelweiser 2026**

catalogue number ew16.491.23



Painting: Norbert Bruggmann

interstices 23

piano

eva-maria houben

january 2026

do we still have time?

yes, there is *always* some time left:
hidden in the interstices

(antoine beuger)

let us become more and more silent

in silence
sadness easily finds a place

a place for us
to go further on

(eva-maria houben)

going on

- silently
- calmly
- unpretentiously
- humbly
- with tenderness
- patiently
- peacefully
- with sweetness

octaves generally apply to the small notes (a kind of resonating sounds).
a bracket indicates that the octave applies to both notes.

A musical staff in treble clef. The upper staff contains notes: G4, A4, Bb4, C5, D5, E5, F5, G5. The lower staff contains notes: G3, A3, B3, C4, D4, E4, F4, G4.

A musical staff in treble clef. The upper staff contains notes: G#4, A4, B4, C#5, D5, E5, F5, G5. The lower staff contains notes: G3, A3, B3, C4, D4, E4, F4, G4.

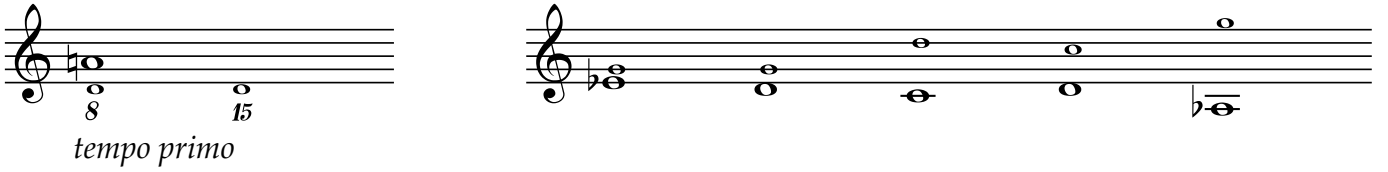
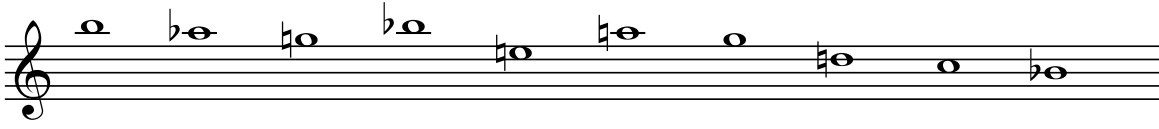
Three musical staves in treble clef. The first staff has notes G4, A4, B4. The second staff has notes G4, A4, B4. The third staff has notes G4, A4, B4. Dynamics include *8va* and *15*.

A musical staff in treble clef. The upper staff contains notes: G#4, A4, B4, C#5, D5, E5, F5, G5. The lower staff contains notes: G3, A3, B3, C4, D4, E4, F4, G4. Dynamics include *8va* and *piu mosso*.

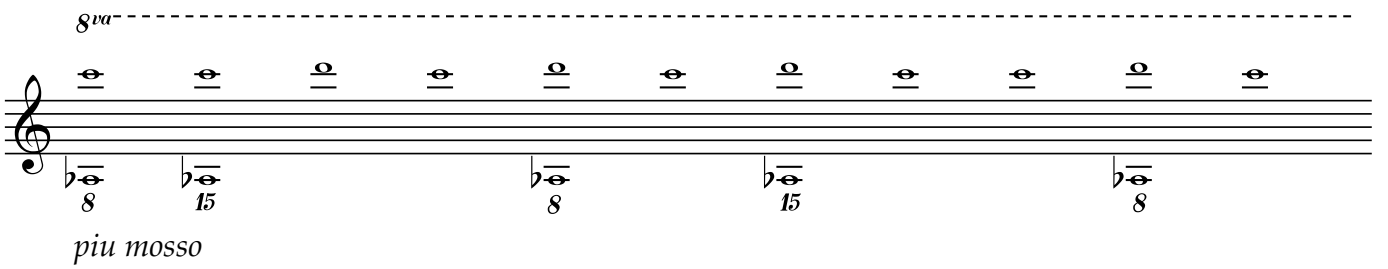
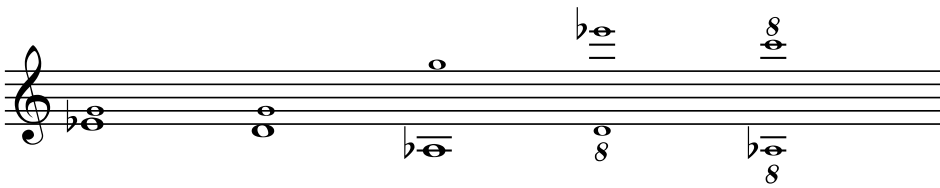
A musical staff in treble clef. The upper staff contains notes: G4, A4, B4, C#5, D5, E5, F5, G5. The lower staff contains notes: G3, A3, B3, C4, D4, E4, F4, G4. Dynamics include *8va*.

A musical staff in treble clef. The upper staff contains notes: G#4, A4, B4, C#5, D5, E5, F5, G5. The lower staff contains notes: G3, A3, B3, C4, D4, E4, F4, G4. Dynamics include *8va* and *tempo primo*.

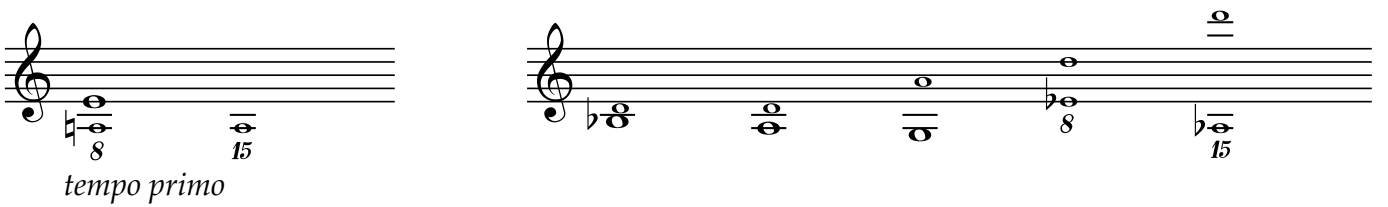
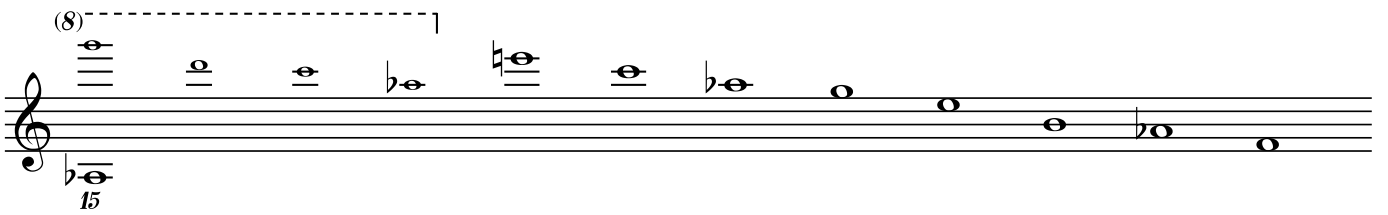
A musical staff in treble clef. The upper staff contains notes: G4, A4, B4, C#5, D5, E5, F5, G5. The lower staff contains notes: G3, A3, B3, C4, D4, E4, F4, G4. Dynamics include *8va* and *piu mosso*.



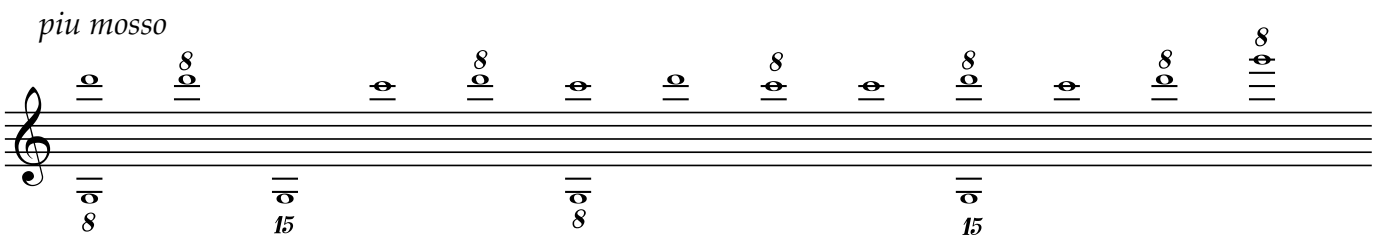
tempo primo



piu mosso



tempo primo



piu mosso