

Kory Reeder

# Falling Blue

---

For Brass Ensemble.

(2020)

### **General Considerations:**

Select any pitch, and move in any direction (up, down, left, right, diagonal, etc).

A very long tone; start *niente*, swell to a warm *mezzo piano*, and then *diminuendo* back to *niente*. Perhaps in a single breath, or in circular breaths: however, the sound of this phrase must be unbroken.

The timbre of each tone should remain consistent.

Crescendos and decrescendos should be as smooth as possible.

Patiently waiting for some time between each tone.

Mutes of all kinds are okay.

Harmonics/overtones are okay.

The result will be an amorphous haze of tones subtly fading in and out.

### **Please notify if performed**

Kory Reeder  
kory.reeder@gmail.com  
www.koryreeder.com

### **Trumpet**

Sounding in the written octave.

Wait for sometime between each tone.  
Perhaps only rarely sounding.

### **Horn**

In any octave.

Stopped or open.

### **Euphonium/Trombone(s)**

In any octave.

### **Tuba**

Sounding in the written octave.

The foundation: fill the void.

# Falling Blue

for Brass Ensemble

Kory Reeder

Tuba

The image displays a musical score for the Tuba part of the piece 'Falling Blue'. It consists of six staves of music, each beginning with a bass clef and a key signature of one flat (B-flat). The notes are as follows:

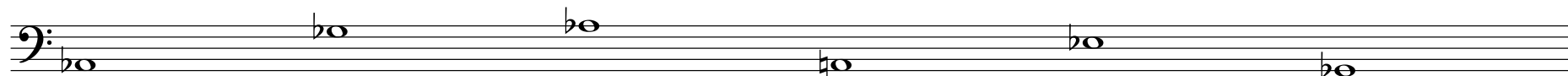
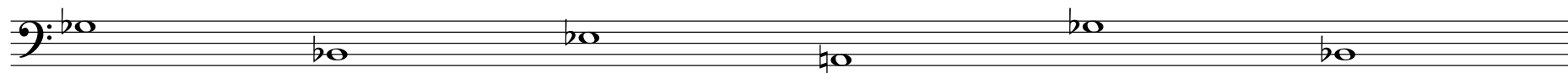
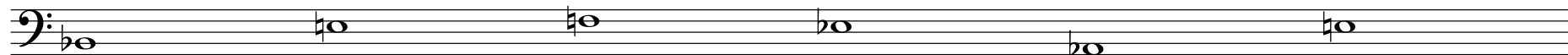
- Staff 1: B-flat, B-flat, B-flat, B-flat, B-flat, B-flat.
- Staff 2: B-flat, B-flat, B-flat, B-flat, B-flat, B-flat.
- Staff 3: B-flat, B-flat, B-flat, B-flat, B-flat, B-flat.
- Staff 4: B-flat, B-flat, B-flat, B-flat, B-flat, B-flat.
- Staff 5: B-flat, B-flat, B-flat, B-flat, B-flat, B-flat.
- Staff 6: B-flat, B-flat, B-flat, B-flat, B-flat, B-flat.

# Falling Blue

for Brass Ensemble

Kory Reeder

[Bass]/Trombone (in any octave)



# Falling Blue

for Brass Ensemble

Kory Reeder

Euphonium (in any octave)

The image displays a musical score for the Euphonium part of the piece 'Falling Blue'. The score is written on six staves, each beginning with a bass clef and a key signature of one flat (B-flat). The music consists of a sequence of notes, primarily half notes, with some notes marked with a fermata. The notes are distributed across the staves as follows:

- Staff 1: Notes on the 1st, 2nd, 3rd, and 4th lines, followed by a fermata on the 4th line.
- Staff 2: Notes on the 1st, 2nd, 3rd, and 4th lines, followed by a fermata on the 4th line.
- Staff 3: Notes on the 1st, 2nd, 3rd, and 4th lines, followed by a fermata on the 4th line.
- Staff 4: Notes on the 1st, 2nd, 3rd, and 4th lines, followed by a fermata on the 4th line.
- Staff 5: Notes on the 1st, 2nd, 3rd, and 4th lines, followed by a fermata on the 4th line.
- Staff 6: Notes on the 1st, 2nd, 3rd, and 4th lines, followed by a fermata on the 4th line.

# Falling Blue

for Brass Ensemble

Kory Reeder

Horn in F (in any octave)



# Falling Blue

for Brass Ensemble

Kory Reeder

Trumpet in B $\flat$

