

Kory Reeder

Concerto

for soloist and ensemble

(2021)

General Considerations:

Open Duration

Always quiet

Start anywhere
On any page

How do we see this situation? As a statement of love and support; or one of expectations and values of virtuosity? Capitalism has taught us that the soloist ought to give us something in return for this attention, but this a choice. We choose to follow this, or to daringly give our attention to the being of an individual without the expectation of return. Anything could happen as we frame you in this affirmation. In that, we hope to say that yes, you matter dearly.

Kory Reeder
kory.reeder@gmail.com
www.koryreeder.com

Soloist

Playing your music
Perhaps not
Perhaps only waiting for the right time

Perhaps a tone will lead to a diversion
A fragment
A memory of your music
Somewhere else

A dearly held memento

Perhaps nothing at all

Ensemble

In patient regard
Perhaps unheard but certainly present
Perhaps only waiting
Watching
Lovingly revering

Practically speaking always under the soloist
Supporting
In affirmation

Perhaps only a tone
Gently held

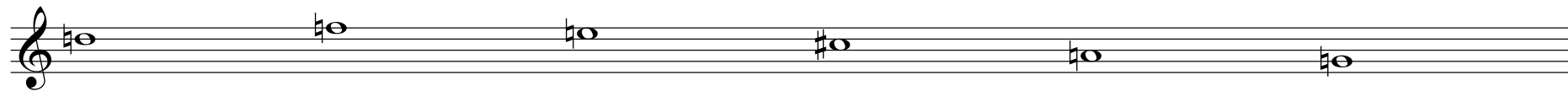
Concerto

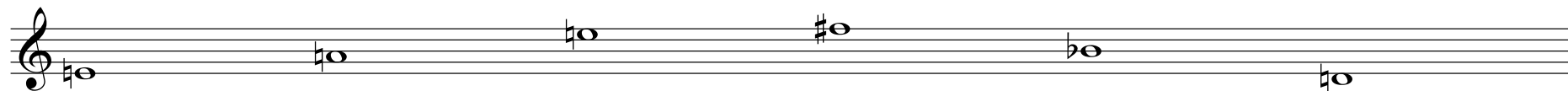
for soloist and ensemble

Kory Reeder

Part for Soloist

The image displays a musical score for a soloist, consisting of eight staves of music. Each staff begins with a treble clef and a key signature of one sharp (F#). The music is written in a style that suggests a slow, contemplative piece, with notes often beamed in pairs or groups. The notes are primarily half notes and quarter notes, with some eighth notes. The overall texture is sparse and focused on melodic lines. The staves are arranged vertically, and the music is presented in a clean, professional layout.





Concerto

for soloist and ensemble

Kory Reeder

Part for Ensemble

The image displays eight staves of musical notation, each representing a different instrument in an ensemble. Each staff begins with a treble clef and a key signature of one flat (B-flat). The notation consists of whole notes, each with a vertical line through its center, indicating a sustained chord. The chords are distributed across the staves as follows:

- Staff 1: C4, F4, Bb4, C5
- Staff 2: C4, F4, Bb4, C5
- Staff 3: C4, F4, Bb4, C5
- Staff 4: C4, F4, Bb4, C5
- Staff 5: C4, F4, Bb4, C5
- Staff 6: C4, F4, Bb4, C5
- Staff 7: C4, F4, Bb4, C5
- Staff 8: C4, F4, Bb4, C5



