

Kory Reeder

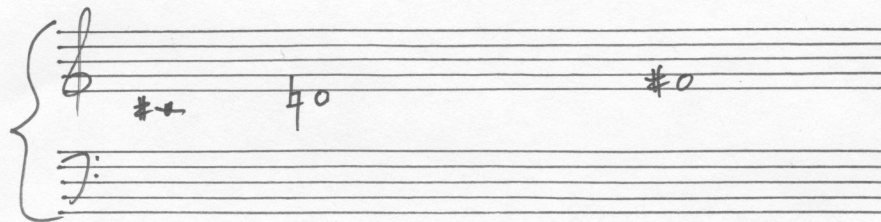
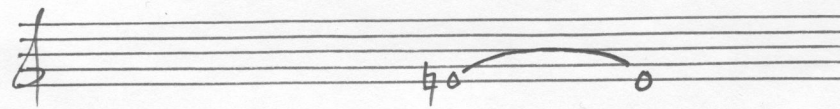
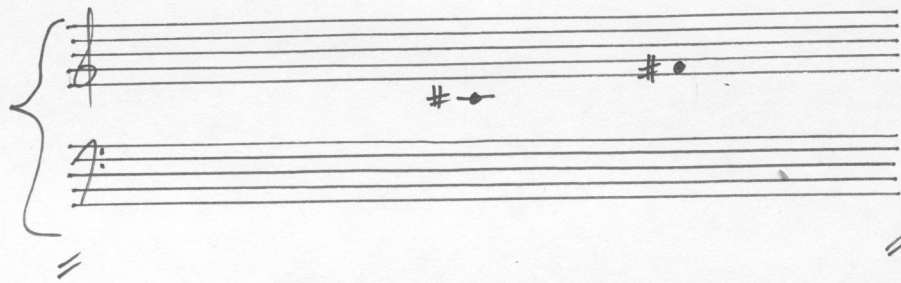
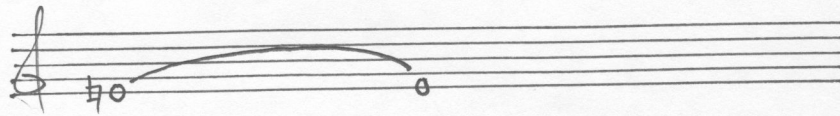
The Temper of my Voice Drained Away

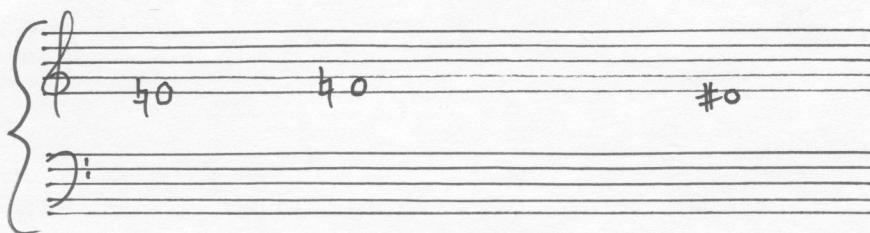
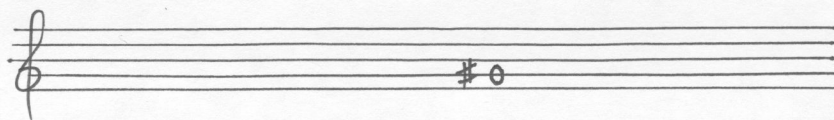
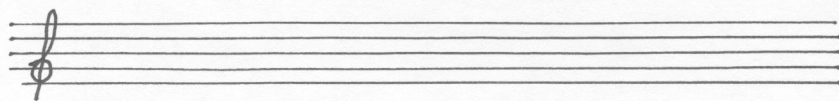
for flute and piano

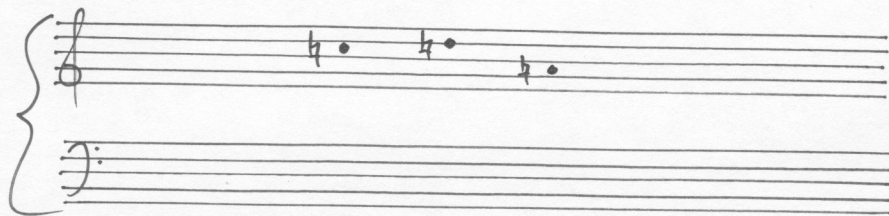
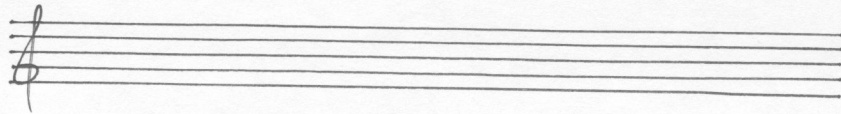
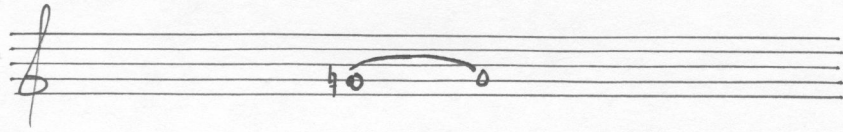
(2021)

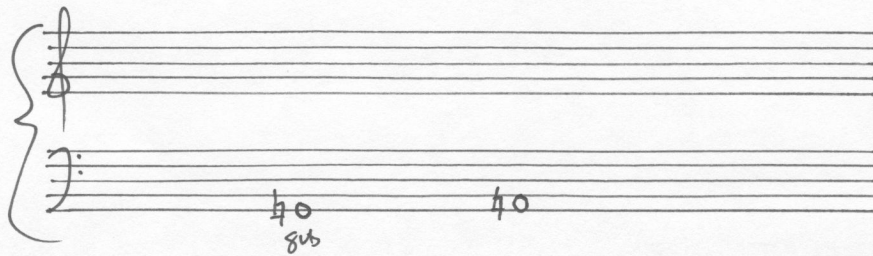
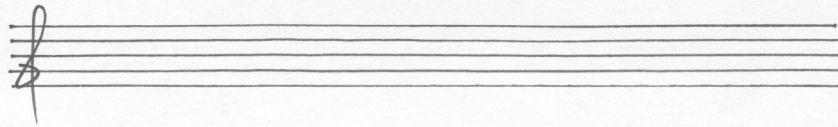
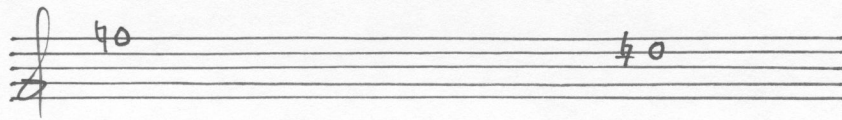
Whole notes are long.
Black notes are short.

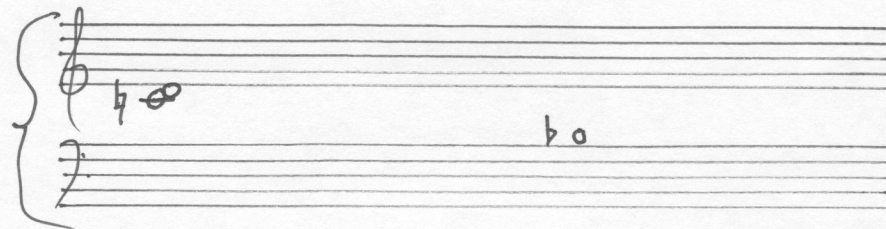
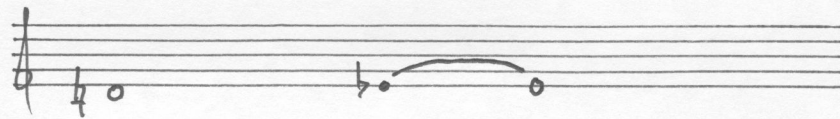
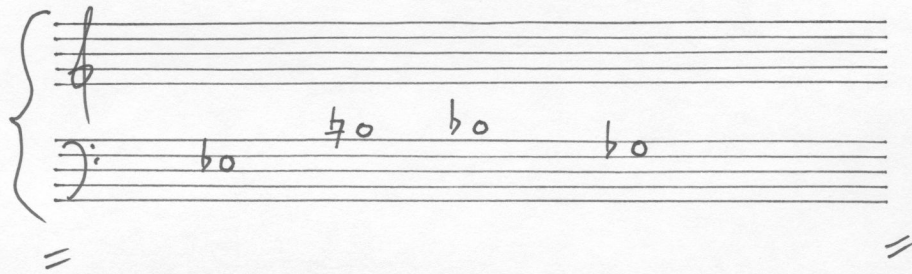
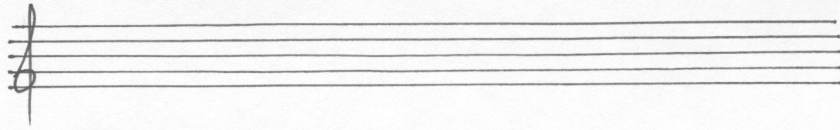
Time between staves.

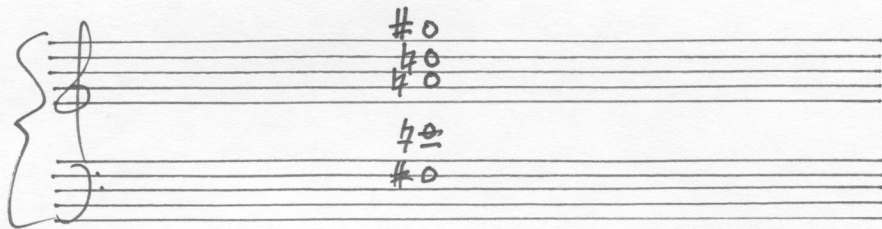
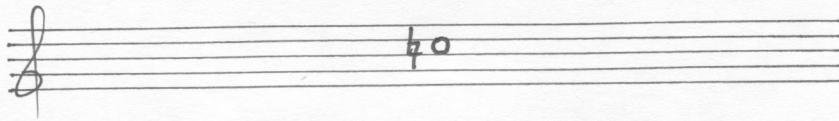


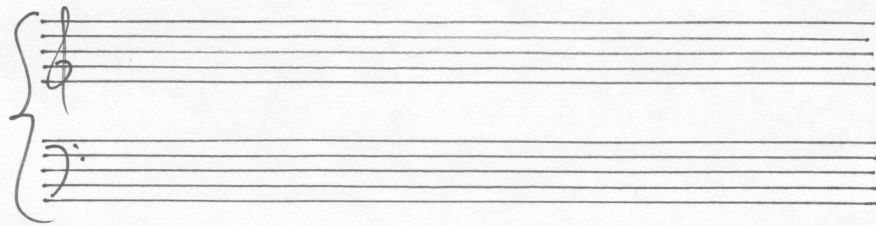
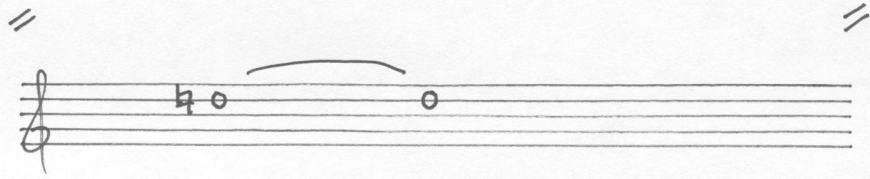
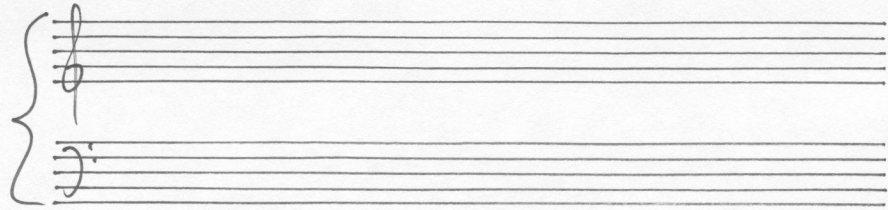
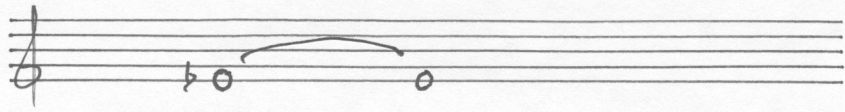


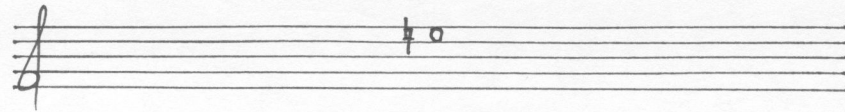
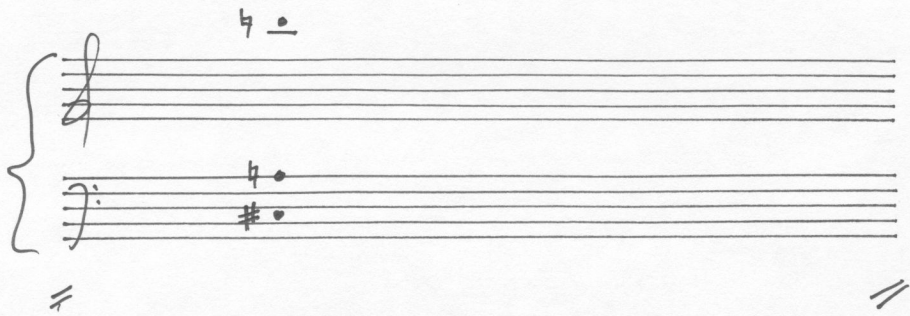
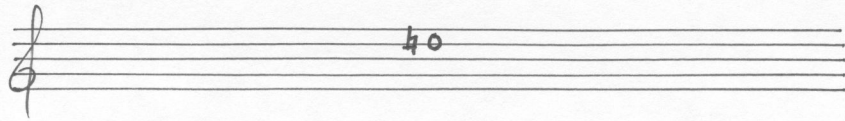


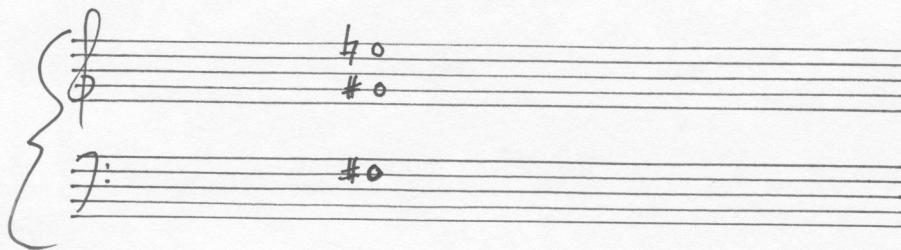
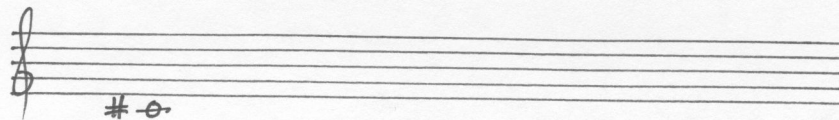
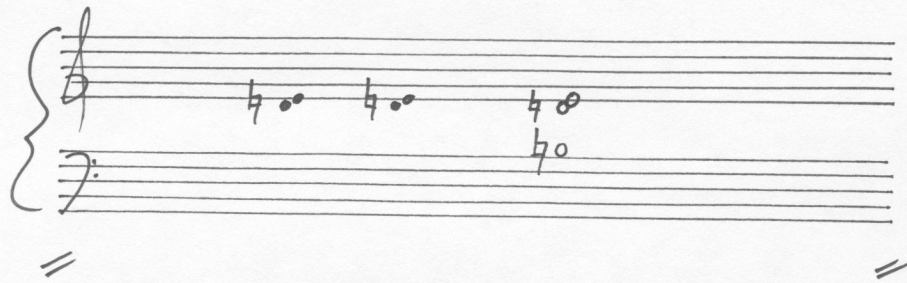
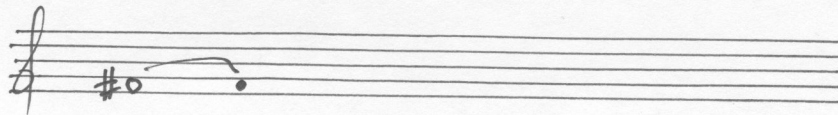


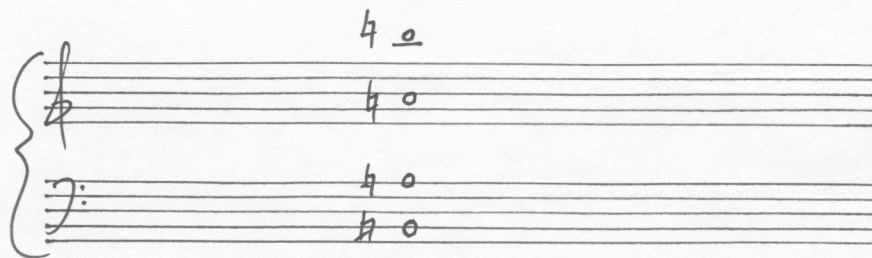
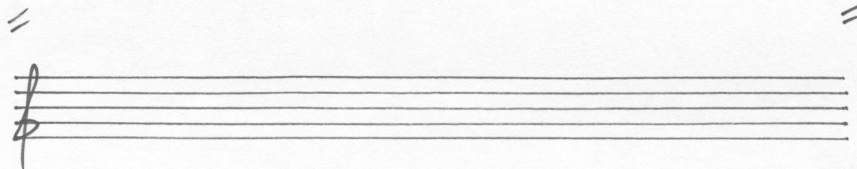
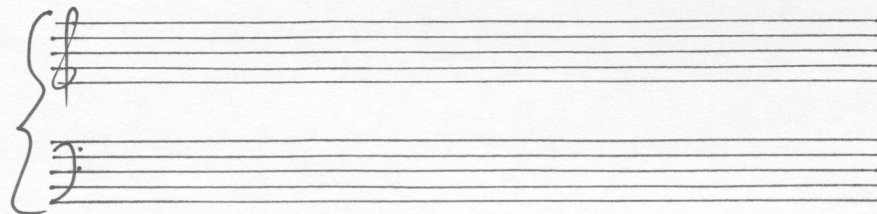
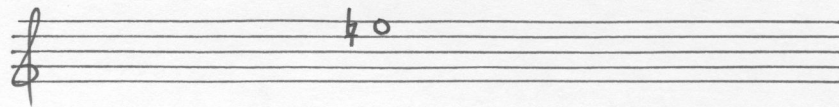












Handwritten musical notation on a page with four systems. The first system consists of a single treble clef staff with two notes, #0 and 0, connected by a slur. The second system consists of a grand staff with two staves; the upper staff has two notes, #0 and 40, and the lower staff has a note 40. The third system consists of a single treble clef staff with three notes, #0, #0, and #0, separated by bar lines. The fourth system consists of a grand staff with two staves; the upper staff has a note 40 and the lower staff has a note 40.

