

Kory Reeder

**Just between us do
you think we're still**

For flute, clarinet, and piano

(2021)

Whole notes are long.
Black notes are shorter.

Time between staves.

Score in C.

Just between us do you think we're still

Kory Reed
2021

Handwritten musical notation for the first system, consisting of two staves. The top staff has a single whole note on the second line. The bottom staff has a single whole note on the first line.

Handwritten musical notation for the second system, consisting of two staves bracketed together. The top staff has a half note on the first line, followed by a slur over a half note on the second line. The bottom staff has a half note on the first line, followed by a slur over a half note on the second line.

=

=

Handwritten musical notation for the third system, consisting of two staves. The top staff has a whole note on the second line with a sharp sign. The bottom staff has a whole note on the first line with a sharp sign.

Handwritten musical notation for the fourth system, consisting of two staves bracketed together. The top staff has a half note on the first line with a sharp sign, followed by a slur over a half note on the second line. The bottom staff has a half note on the first line, followed by a slur over a half note on the second line.

Handwritten musical notation for two staves. The top staff has a treble clef and two notes (G4 and A4) beamed together with a slur. The bottom staff has a treble clef and two notes (F4 and G4) beamed together with a slur.

Handwritten musical notation for a grand staff. The top staff has a treble clef and two notes (B3 and C4) beamed together with a slur. The bottom staff is empty.

=

=

Handwritten musical notation for two staves. The top staff has a treble clef and is empty. The bottom staff has a treble clef and three notes (B3, C4, D4) beamed together with a slur.

Handwritten musical notation for a grand staff. The top staff has a treble clef and one note (E4) with a slur above it. The bottom staff has a bass clef and one note (D3).

=

=

x5

Handwritten musical notation on two staves. The top staff has a treble clef and contains a half note on the second line (G4) and a quarter note on the second space (A4) with a slur over them. The bottom staff has a bass clef and contains a half note on the second space (G3). A '6' with a bar over it is written below the bass staff.

Handwritten musical notation on two staves. The top staff has a treble clef and contains a half note on the second space (G4) and a quarter note on the second space (A4) with a slur over them. The bottom staff has a bass clef and contains a half note on the second space (G3). A '6' with a bar over it is written below the bass staff.

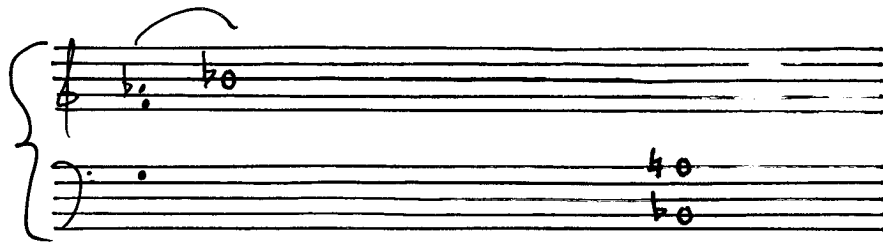
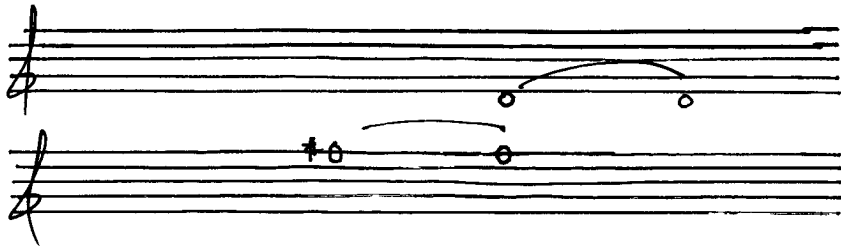
=

=

Handwritten musical notation on two staves. The top staff has a treble clef and contains a half note on the second space (G4). The bottom staff has a bass clef and contains a half note on the second space (G3). A '#0' is written below the bass staff.

Handwritten musical notation on two staves. The top staff has a treble clef and contains a half note on the second space (G4) and a quarter note on the second space (A4) with a slur over them. The bottom staff has a bass clef and contains a half note on the second space (G3) and a quarter note on the second space (A3) with a slur over them.

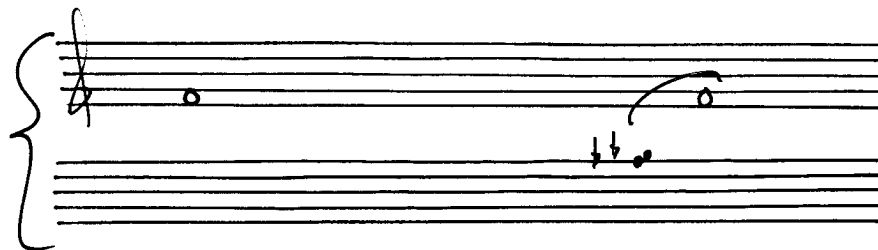
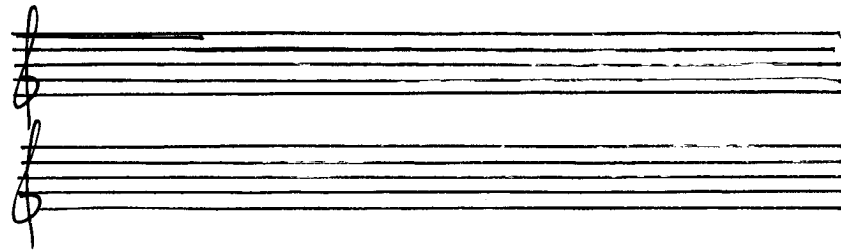
4



=

=

x3



Handwritten musical notation for two staves. The top staff has two notes with a slur. The bottom staff has two notes with a slur.

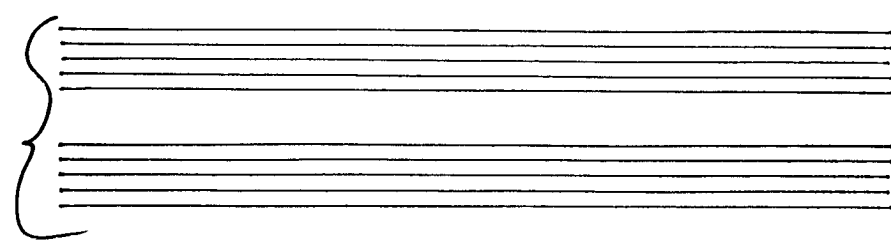
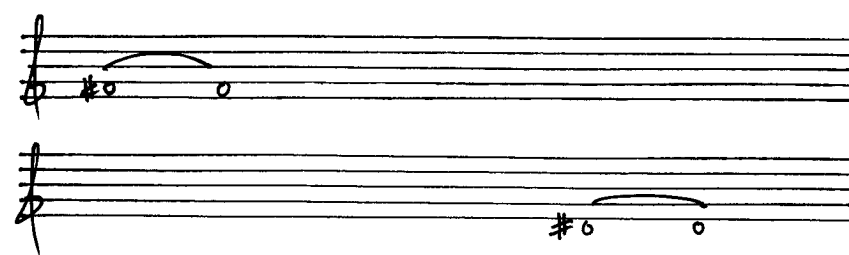
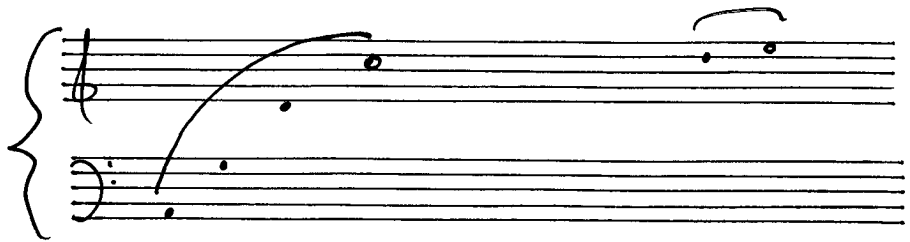
Handwritten musical notation for a grand staff. The treble clef staff has three notes with a slur. The bass clef staff is empty.

=

=

Handwritten musical notation for two staves. The top staff has six notes with slurs. The bottom staff has six notes with slurs.

Handwritten musical notation for a grand staff. The treble clef staff has two notes. The bass clef staff is empty.



Handwritten musical notation for the first system. It consists of three staves. The top two staves are a grand staff with treble and bass clefs. The top staff is empty. The bottom staff contains a single note with a sharp sign (#) on the second line. The third staff is a grand staff with a brace on the left side. The top staff of this grand staff contains four notes: a quarter note with a sharp sign (#) on the first line, a quarter note with a sharp sign (#) on the second line, a quarter note on the second space, and a quarter note with a sharp sign (#) on the second line. There are two slurs: one over the first two notes and another over the last two notes.

//

//

Handwritten musical notation for the second system, consisting of two staves. The top staff has two notes: a quarter note with a sharp sign (#) on the first line and a quarter note with a sharp sign (#) on the second line, connected by a slur. The bottom staff has two notes: a quarter note on the second space and a quarter note with a sharp sign (#) on the second line, connected by a slur.

Handwritten musical notation for the third system, consisting of a grand staff with a brace on the left side. The top staff contains two notes: a quarter note with a flat sign (b) on the second space and a quarter note with a sharp sign (#) on the second line, connected by a slur. The bottom staff is empty.

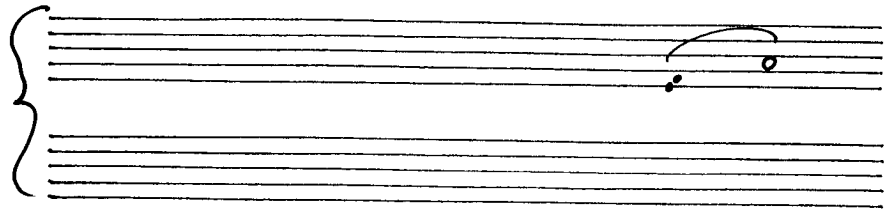
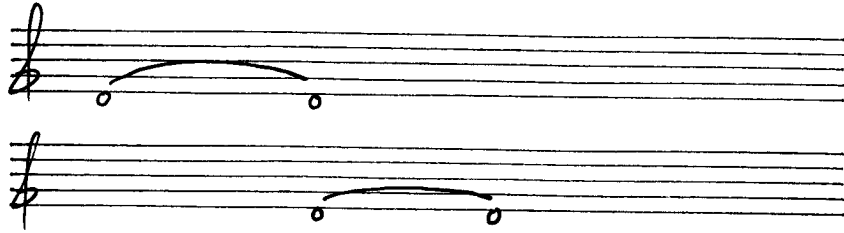
Handwritten musical notation for two staves. The top staff has a treble clef and a sharp sign followed by a note on the second line. The bottom staff has a bass clef and a note on the second line.

Handwritten musical notation for a grand staff. The right hand has two notes on the top staff, one with a sharp sign and a slur. The left hand has a note on the bottom staff.

==

Handwritten musical notation for two staves. The top staff has a treble clef and two notes on the second and fourth lines. The bottom staff has a bass clef and a note on the second line.

Handwritten musical notation for a grand staff. The right hand has three notes on the top staff. The left hand has a note on the bottom staff.



=

=

