

Kory Reeder

This is not a mirror

For percussionist, alone

(2020)

Whole notes are long.
Black notes are shorter.

Time between staves.

Strings non-vibrato.

Pedal down

Vibraphone pedal always down.

Take your time: while writing, I generally played this piece in 15-20 minutes.

Always very soft/gentle attacks: glock mallets may be wrapped in moleskin, etc. to provide the most rounded attack.

This is not a mirror.

for percussionist, alone

Kory Reeder

Very gentle, just shimmering; ♩ = 60

Glockenspiel

Vibraphone

Red. → *pppp*

Unmetered, use your intuition.
○ = long/very long ● = shorter
Rest for some time between systems

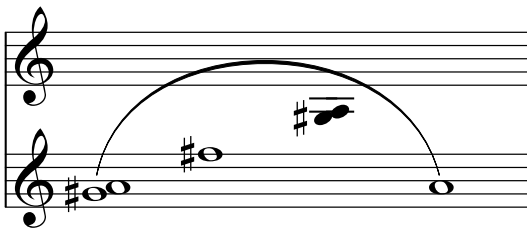
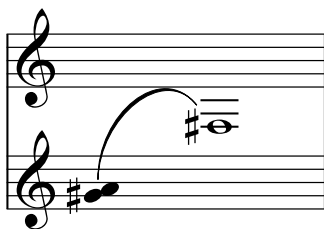
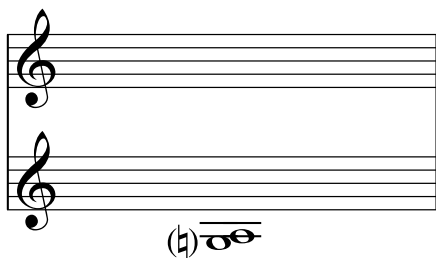
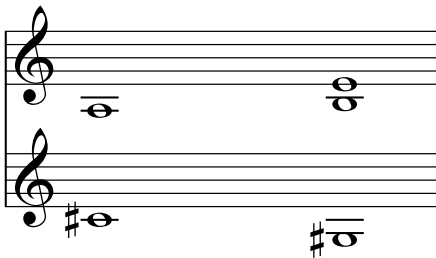
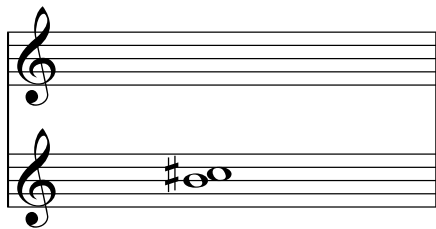
A musical staff system consisting of two staves. The upper staff has a treble clef and contains a whole note chord with a sharp sign (#) above it. The lower staff has a bass clef and contains a whole note chord.

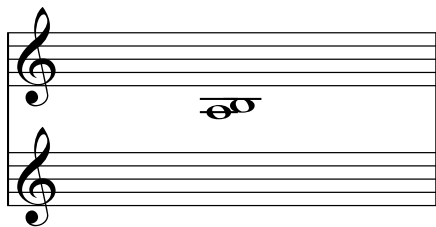
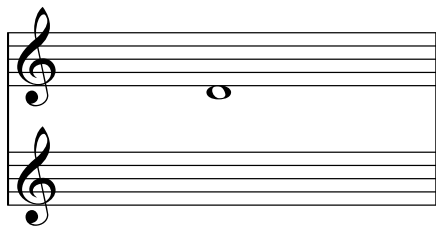
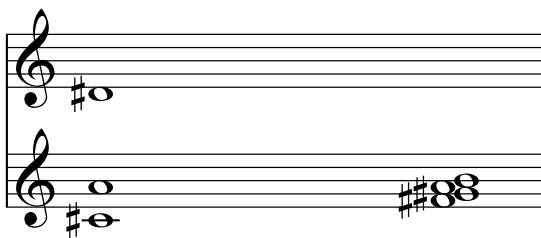
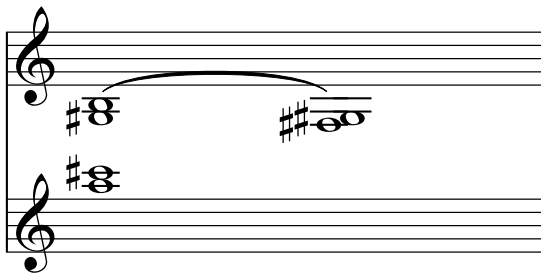
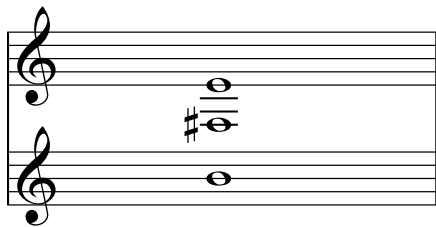
A musical staff system consisting of two staves. The upper staff has a treble clef and contains a whole note chord with a sharp sign (#) above it, followed by a slur over a whole note chord with a sharp sign (#) above it, and then another whole note chord with a sharp sign (#) above it. The lower staff has a bass clef and contains a whole note chord with a sharp sign (#) above it.

A musical staff system consisting of two staves. The upper staff has a treble clef and is empty. The lower staff has a bass clef and contains a whole note chord with a sharp sign (#) above it.

A musical staff system consisting of two staves. The upper staff has a treble clef and contains a whole note chord with a sharp sign (#) above it, followed by a slur over a whole note chord with a sharp sign (#) above it. The lower staff has a bass clef and contains three whole note chords, each with a sharp sign (#) above it.

A musical staff system consisting of two staves. The upper staff has a treble clef and contains a whole note chord with a sharp sign (#) above it, followed by a slur over a whole note chord with a sharp sign (#) above it, and then another whole note chord with a sharp sign (#) above it. The lower staff has a bass clef and contains three whole note chords, each with a sharp sign (#) above it.





Musical notation on two staves. The top staff has a treble clef and a sharp sign (#) on the first line. A note is written on the first line, with a long horizontal line extending to the right, indicating a very long duration. The bottom staff has a treble clef and a sharp sign (#) on the first line. A note is written on the first line, with a long horizontal line extending to the right. A text annotation ". Very long: at least 1 minute" is placed between the two staves, pointing to the long note in the top staff.

Musical notation on two staves. The top staff has a treble clef and a sharp sign (#) on the first line. A note is written on the first line. The bottom staff has a treble clef and a sharp sign (#) on the first line. A note is written on the first line.

Musical notation on two staves. The top staff has a treble clef and a sharp sign (#) on the first line. A note is written on the first line. The bottom staff has a treble clef and a sharp sign (#) on the first line. A note is written on the first line.