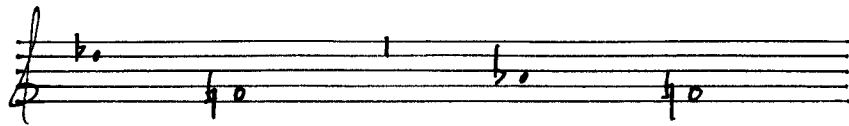
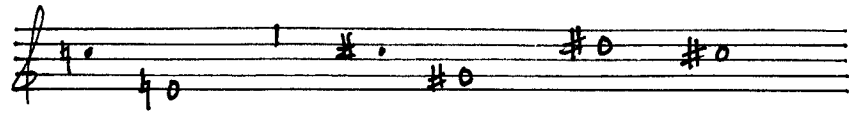
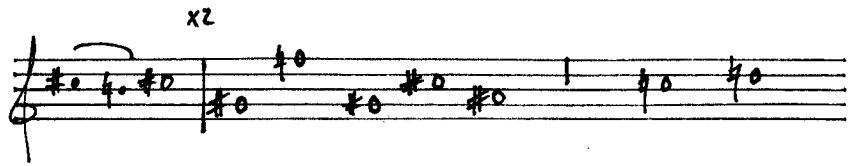
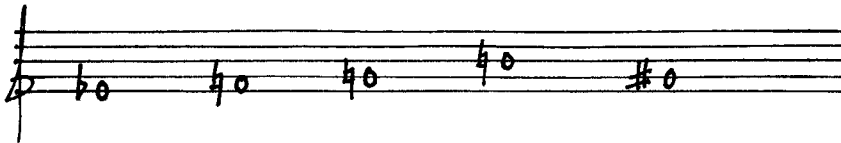
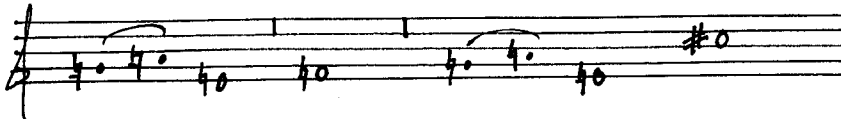
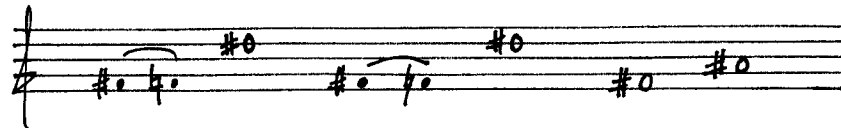
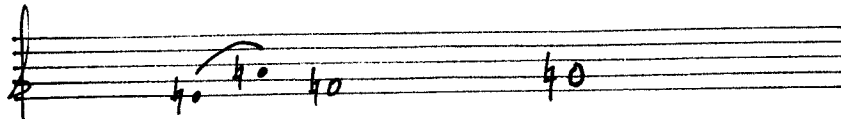
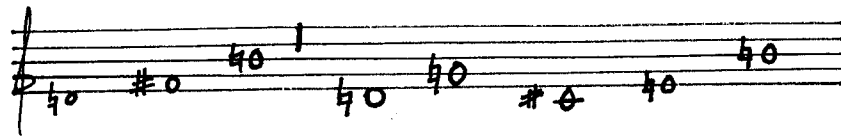
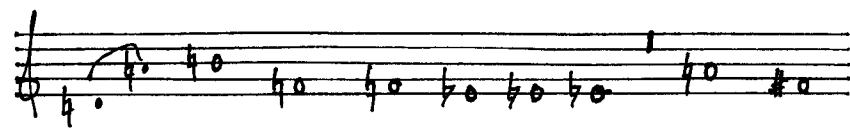
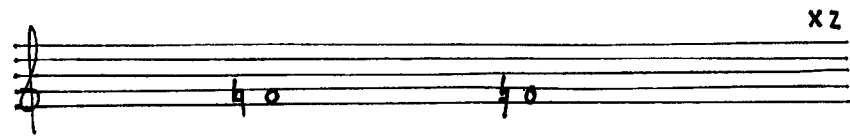
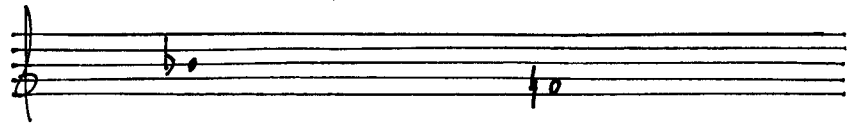


||

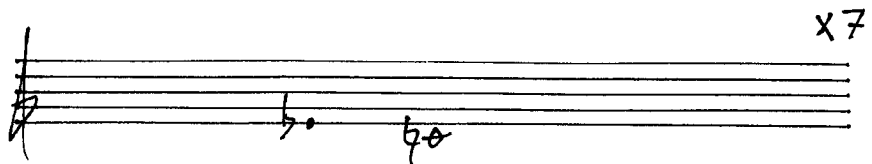
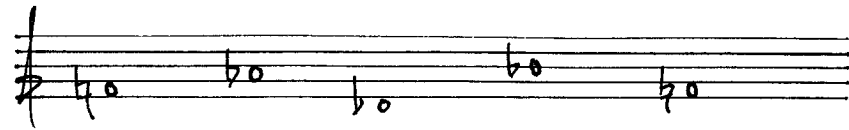
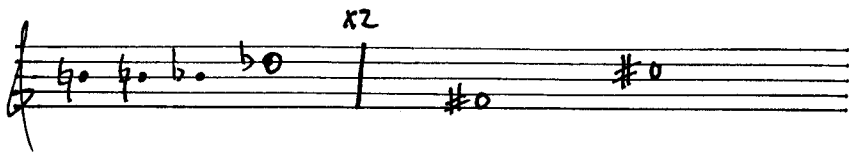
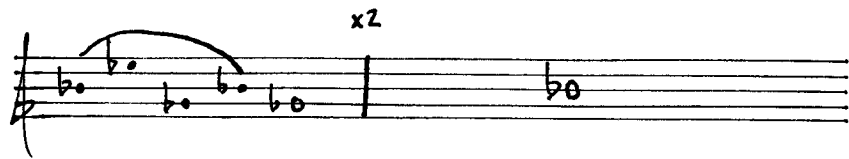
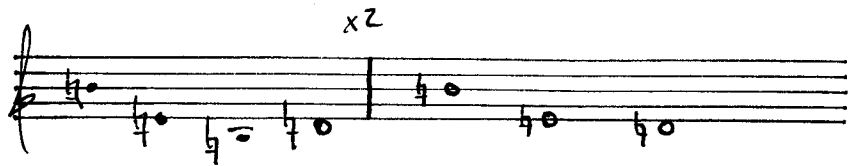


III

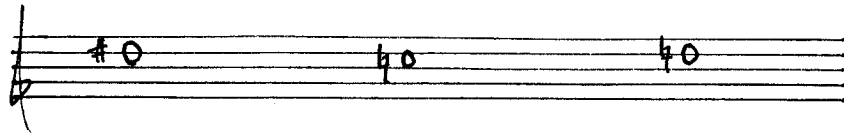




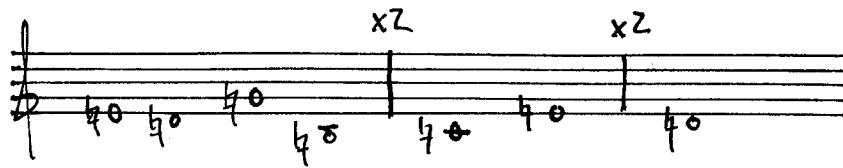
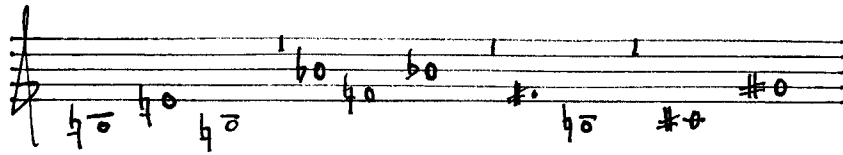
V



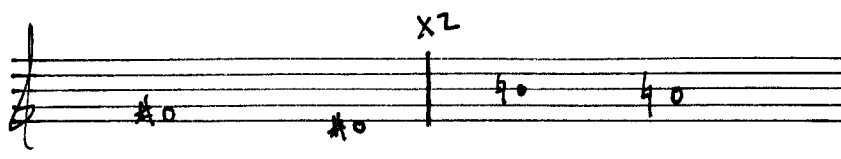
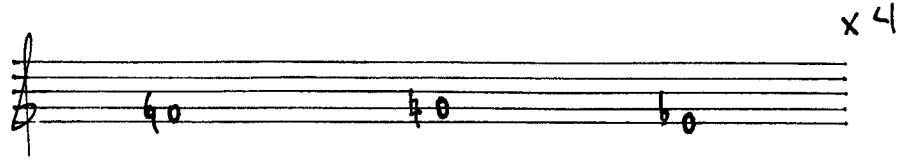
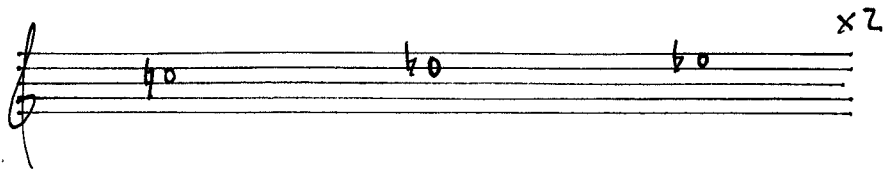
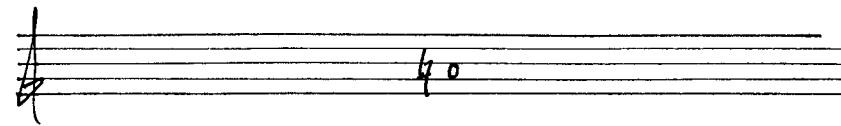
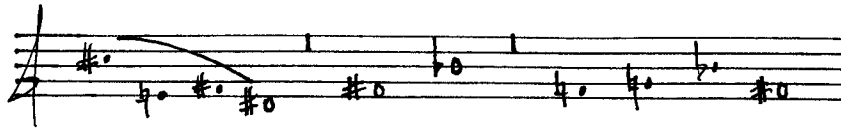
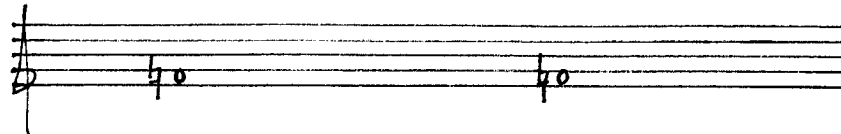
VI



VII

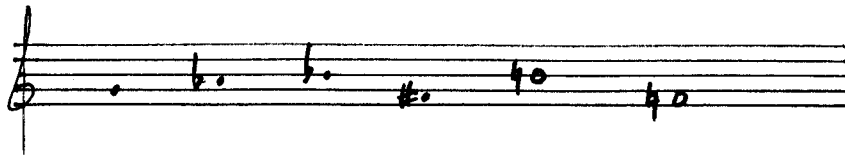


VIII





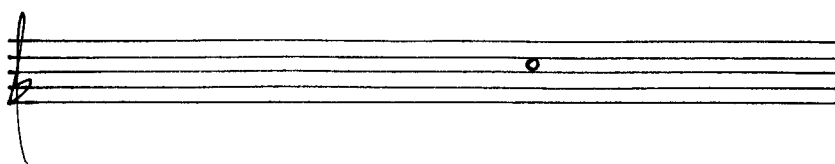
IX



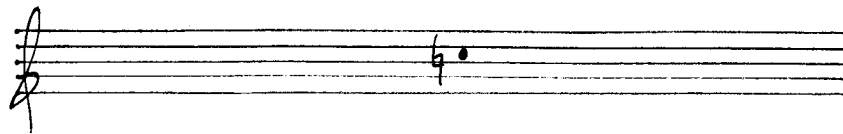
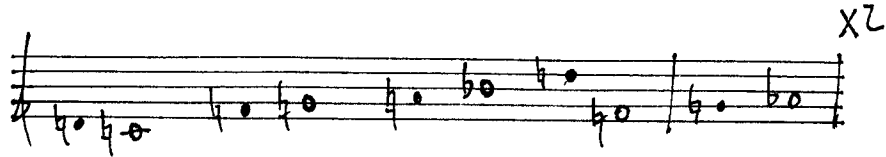
X

Handwritten musical notation on two staves. The top staff is in treble clef with a key signature of one sharp (F#). It contains two measures of music. The first measure has notes F#4, G4, and A4. The second measure has notes B4, C5, and D5. Above the first measure is the handwritten text "x2". The bottom staff is in bass clef with a key signature of one sharp (F#). It contains two measures of music. The first measure has notes F#2, G2, and A2. The second measure has notes B2, C3, and D3. Above the first measure is the handwritten text "x2".

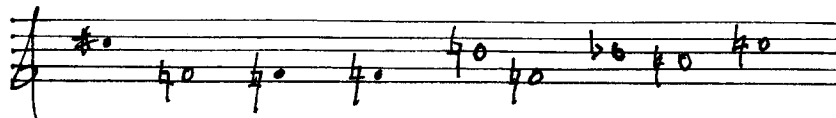
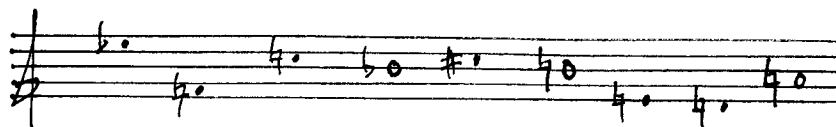
XI



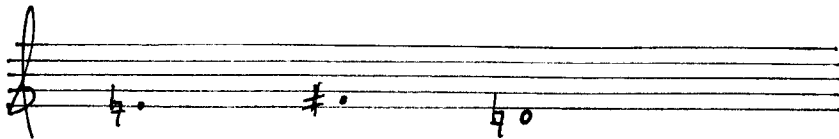
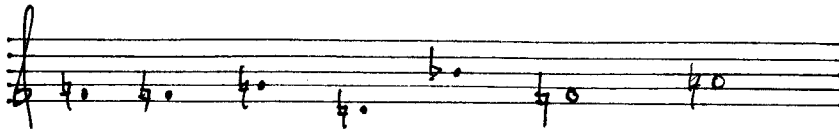
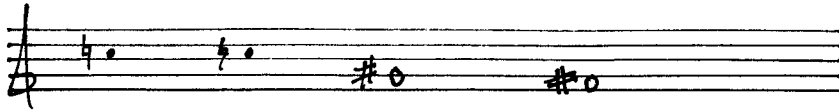
XII



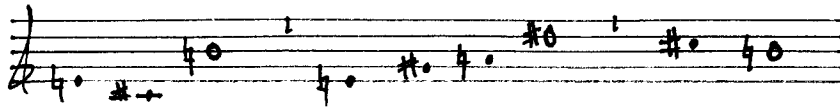
XIII



XIV



XV



XVI

